

**LOCATION MAP**  
NTS

**DISTRICT REQUIREMENTS & GENERAL NOTES**

APPLICANT/OWNER: DOLLAR TREE  
 PARCEL NO. 2417-332-0009-009  
 FEMA FLOOD ZONE: ZONE X PER FLOOD PANEL 12111C-0186-J, DATED FEB. 16, 2012  
 LAND USE INFORMATION:  
 CURRENT USE: VACANT  
 PROPOSED USE: RETAIL  
 FUTURE LAND USE DESIGNATION: COMMERCIAL  
 ZONING DESIGNATION: C3 - GENERAL COMMERCIAL

DEVELOPMENT STANDARDS:	REQUIRED	PROPOSED
MIN. LOT AREA DOLLAR TREE (S.F.)	10,000	72,942
MIN. LOT AREA OUTPARCEL (S.F.)	10,000	57,071
MIN. LOT FRONTAGE (FEET)	50	675.11
MIN. LOT DEPTH (FEET)	90	314.16 MIN. SET BACKS:
FRONT - (FEET)	25	121.41
SIDE - WETLAND AREA (FEET)	15	36.59
SIDE - HARTMAN RD (FEET)	15	35.40
REAR - (FEET)	15	115.94
MAX. HEIGHT (FEET)	65'	<65'
MAX. FAR (RATIO)	0.60	0.14
MIN. PERVIOUS AREA (%)	20	42.40
MIN. OPEN SPACE (RATIO)	25	44%

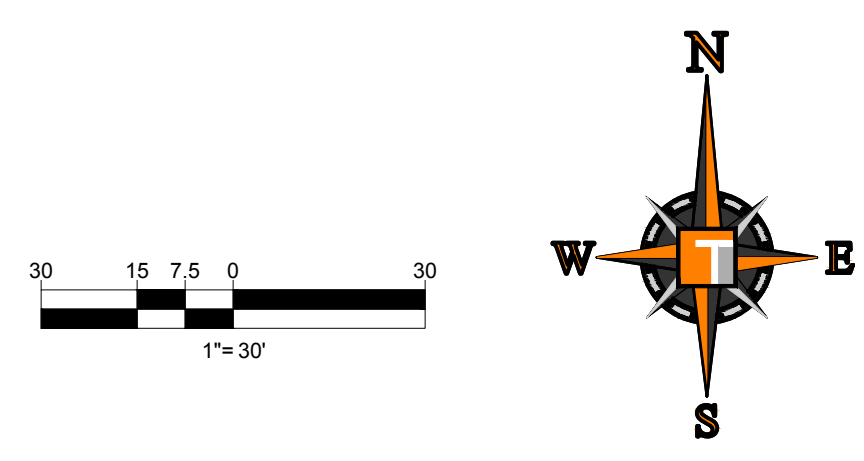
SITE AREA:	EXISTING			PROPOSED		
	S.F.	ACRES	%	S.F.	ACRES	%
IMPERVIOUS:						
BUILDING	0	0.00	0.0%	9,977	0.23	13.68%
PAVEMENT / WALKS	0	0.00	0.0%	32,037	0.70	43.92%
TOTAL	0	0.00	0.0%	42,014	0.93	57.60%
PERVIOUS:	73,059	1.68	100%	30,928	0.71	42.40%

PARKING DATA	USE	AREA	RATIO	AMOUNT
REQUIRED:				
PROVIDED:				
STANDARD SPACES (MIN. 9.5' X 19')			48	(9.5' X 19')
ACCESSIBLE SPACES (MIN. 12' X 19')			2	(12' X 19')
TOTAL SPACES			50	

LOADING ZONE:  
 REQUIRED:  
 GROSS FLOOR AREA 9,977 S.F. - 0 REQUIRED

BICYCLE PARKING:  
 REQUIRED: 1 SPACE PER 10 MOTOR VEHICLE SPACES; 2 MINIMUM - 5 REQUIRED  
 PROVIDED: 5 SPACES

- NOTES:
- ALL CONSTRUCTION SHALL COMPLY WITH SECTIONS 17 AND 22 OF THE CITY OF FORT PIERCE CODE OF ORDINANCES.
  - ALL TRUNCATED DETECTABLE SURFACE SHALL BE CAST IN PLACE (ADHESIVE NOT PERMITTED) AND BE BRICK RED IN COLOR. ALL RAMP AND FLUSH CONNECTIONS WITHIN PUBLIC RIGHT-OF-WAY OR ROAD EASEMENTS SHALL INCLUDE TRUNCATED DETECTABLE SURFACE 24" IN DEPTH CONSISTENT WITH FDOT INDEX #304.



Printed on Monday, August 28, 2017, 1:15 PM by Jason Gunther

**THOMAS ENGINEERING GROUP**  
 PEBWORTH PROFESSIONAL PLAZA  
 125 W. INDIANTOWN RD, SUITE 206  
 JUPITER, FL 33458  
 PH: (561) 203-7503  
 FX: (561) 203-7721  
 www.ThomasEngineeringGroup.com

REV.	DATE	DRN	CHK	DESCRIPTION

**JASON M. GUNTHER**  
 No. 58629  
 August 28, 2017  
 PROFESSIONAL ENGINEER  
 FLORIDA LICENSE NO. 00023  
 FLORIDA BOARD OF PROFESSIONAL ENGINEERS No. 27528

**DOLLAR TREE**

**SITE PLAN**

PROJ. NO. \_\_\_\_\_ DWG. NO. **C-05**





ALL TRIMMING UNDERTAKEN ON A TREE PROTECTED BY THE PROVISIONS OF THE LAND DEVELOPMENT CODE SHALL BE PRUNED IN ACCORDANCE WITH THE AMERICAN NATIONAL STANDARDS INSTITUTE (ANSI) A-300 PRUNING STANDARDS

ALL EXISTING TREE TO REMAIN SHALL BE STRUCTURALLY PRUNED AND TRIMMED UNDER THE SUPERVISION OF AN ISA CERTIFIED ARBORIST.

ANY PVIOUS AREA TO REMAIN THAT IS DISTURBED BY CONSTRUCTION & IS NOT NOTED ON THE LANDSCAPE PLAN TO HAVE SHRUBS OR GROUNDCOVER SHALL BE SODDED

ALL EXISTING INVASIVE & EXOTIC SPECIES, SHRUBS, & GROUNDCOVER NOT SHOWN ON THIS PLAN SHALL BE REMOVED FROM SITE

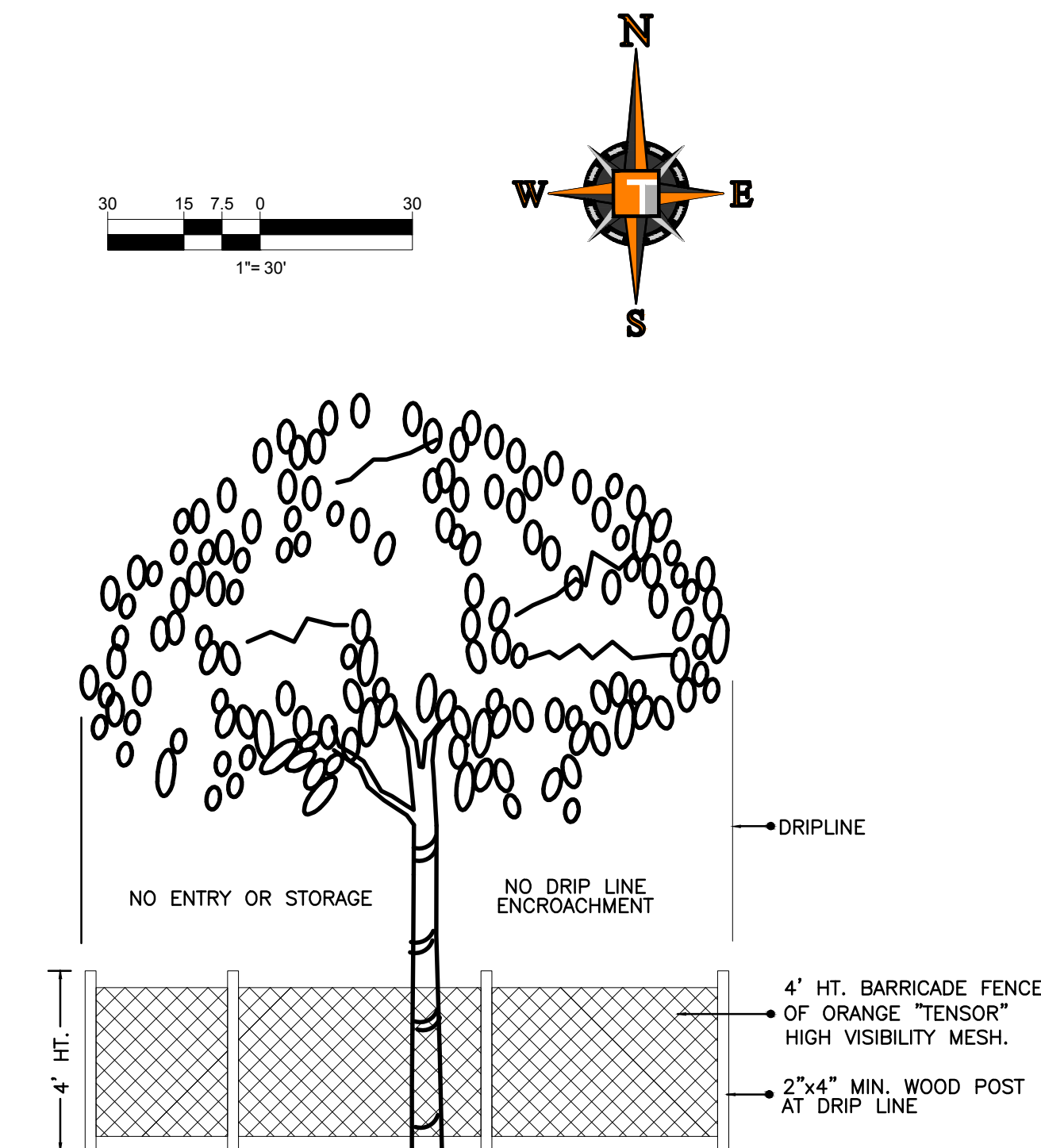
ALL NUISANCE, EXOTIC VEGETATION SHALL BE ERADICATED & REMOVED FROM THE ENTIRE SITE

NOTE: ALL TREES SCHEDULED TO BE REMOVED OR THAT HAVE BEEN PREVIOUSLY REMOVED AND HAVE REMAINING STUMPS, SHALL BE CUT DOWN, STUMP GROUND AND SHALL HAVE ALL ROOTS REMOVED.

UNLESS OTHERWISE NOTED, ALL SHRUBS, GROUNDCOVER, ACCENT PLANT AND SOD NOT DEPICTED ON SUBJECT PARCEL ARE TO BE REMOVED FROM THE SITE.

DURING LAND ALTERATION AND CONSTRUCTION ACTIVITIES, IT SHALL BE UNLAWFUL TO REMOVE VEGETATION BY GRUBBING OR TO PLACE SOIL DEPOSITS, DEBRIS, SOLVENTS, CONSTRUCTION MATERIAL, MACHINERY OR OTHER EQUIPMENT OF ANY KIND WITHIN THE DRIPLINE OF A TREE TO REMAIN ON THE SITE UNLESS OTHERWISE APPROVED BY THE CITY

ALL TREES TO REMAIN MUST BE PROTECTED BY TREE PROTECTION BARRICADES MEETING THE MINIMUM STANDARDS. PROTECTIVE BARRICADES SHALL REMAIN IN PLACE UNTIL LAND ALTERATION AND CONSTRUCTION ACTIVITIES ARE COMPLETED.



### TREE PRESERVATION BARRICADE FENCING DETAIL

NTS.

#### EXISTING TREE NOTES:

- Contractor is responsible for determining all utility locations and installing facilities so as to not conflict. All damage to existing utilities or improvements caused by Contractor shall be repaired at no additional cost to the Owner.
- Contractor to notify "Sunshine State One Call of Florida, Inc." at 1-800-432-4710 Two Full Business Days prior to digging for underground utility locations.
- Contractor shall be responsible for providing final grading of all associated planting areas.
- After final grade, area to be reaked to 6" depth and all rock and foreign inorganic materials removed and disposed of properly off-site.
- No plant material will be accepted showing evidence of cables, chain marks, equipment scars, or otherwise damaged.
- Plant material will not be accepted when the ball of earth surrounding its roots has been cracked, broken or otherwise damaged.
- Root-prune all trees a minimum of (10) weeks prior to planting.
- Tree protection barricades shall be provided by Landscape Contractor around existing trees that may be impacted by the proposed construction. Prior to any construction a tree protection barricade inspection shall be conducted by the landscape architect, owner or governing municipality. Refer to landscape detail for tree preservation barricade fencing.
- In all pedestrian areas, all trees and palms shall be maintained to allow for clear passage at an 8 foot clear trunk.

#### EXISTING TREE DISPOSITION CHART

##### DOLLAR TREE - FT. PIERCE, FL

TREE NO.	BOTANICAL NAME	COMMON NAME	DBH	HT.	CONDITION	DISPOSITION	COMMENTS	PROTECTED
1	Quercus virginiana	Live Oak	34	40.0	70	REMAIN	Construction	YES
2	Quercus virginiana	Live Oak	11	25.0	70	REMAIN		NO
3	Quercus virginiana	Live Oak	18	30.0	70	REMAIN		YES
4	Pinus elliotii	Slash pine	30	50.0	70	REMAIN	R/O/W	YES
5	Sabal palmetto	Cabbage palm		5' ct.	70	REMAIN	R/O/W; Scrub palm	NO
6	Sabal palmetto	Cabbage palm		10' ct.	70	REMAIN	R/O/W	YES
7	Lagerstroemia x Tuskegee	Tuskegee Crape Myrtle		15.0	70	REMAIN	R/O/W	NO
8	Lagerstroemia x Tuskegee	Tuskegee Crape Myrtle		10.0	70	Relocate	R/O/W	NO
9	Lagerstroemia x Tuskegee	Tuskegee Crape Myrtle		10.0	70	Relocate	R/O/W	NO
10	Lagerstroemia x Tuskegee	Tuskegee Crape Myrtle		10.0	70	Relocate	R/O/W	NO
11	Lagerstroemia x Tuskegee	Tuskegee Crape Myrtle		10.0	70	REMAIN	R/O/W	NO
12	Quercus virginiana	Live Oak	23	25.0	70	remove	Multi; East Outparcel	YES
13	Quercus virginiana	Live Oak	2		70	REMAIN	East Outparcel	NO
14	Quercus virginiana	Live Oak	2		70	REMAIN	East Outparcel	NO
15	Quercus virginiana	Live Oak	3		70	REMAIN	East Outparcel	NO
16	Quercus virginiana	Live Oak	3		70	REMAIN	East Outparcel	NO
17	Quercus virginiana	Live Oak	3		70	REMAIN	East Outparcel	NO
18	Quercus virginiana	Live Oak	3		70	REMAIN	East Outparcel	NO
19	Quercus virginiana	Live Oak	4		70	REMAIN	East Outparcel	NO
20	Quercus virginiana	Live Oak	4		70	REMAIN	East Outparcel	NO
21	Sabal palmetto	Cabbage palm		10' ct.	70	REMAIN	East Outparcel	YES
			TOTAL DBH:	140.0	NOTE: NATIVE TREES WITH A DBH OF 14" OR GREATER ARE REQUIRED TO BE MITIGATED @ INCH:INCH;			
			TOTAL DBH TO REMAIN:	117.0	ONLY PALMS WITH A MIN. 10' OF CLEAR TRUNK ARE PROTECTED PER SEC. 22-194.(B); FURTHERMORE,			
			TOTAL QUALIFIED PALMS TO BE REMOVED:	23	PROTECTED/RELOCATED PALMS WILL COUNT TOWARDS ANY REQUIRED PALM TREE MITIGATION AT A			
			TOTAL QUALIFIED PALMS TO BE RELOCATED:	0	RATE OF ONE PALM PRESERVED/PROTECTED = ONE PALM REMOVED PER SEC. 22-194.(D).2			

NOTE: TREES IN THE R/O/W ARE NOT INCLUDED IN THE ABOVE TABULATIONS

Printed on Monday, August 28, 2017, 9:40 AM by Ryan King

**THOMAS**  
ENGINEERING GROUP

PEB WORTH PROFESSIONAL PLAZA  
125 W. INDIANTOWN RD. SUITE 206  
JUPITER, FL 33458  
PH: (561) 203-7503  
FX: (561) 203-7721  
www.ThomasEngineeringGroup.com

REV.	DATE	RJK	RJK	DESCRIPTION

DOCUMENT CONTROL

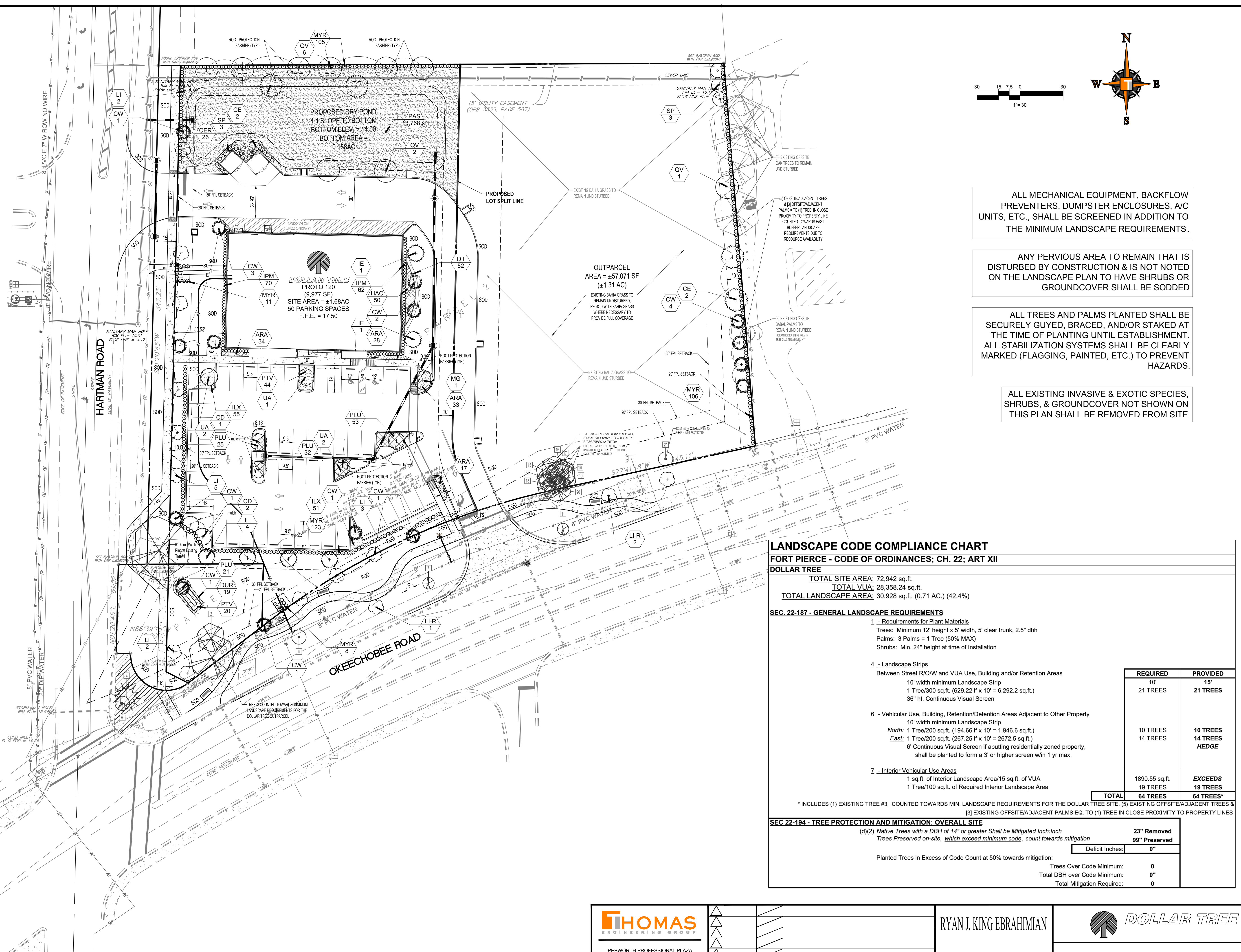
RYAN J. KING EBRAHIMIAN

REGISTERED LANDSCAPE ARCHITECT  
August 28, 2017  
FLORIDA LICENSE NO. 6667324  
FLORIDA BUSINESS CERT. OF AUTH. NO. 27528

**DOLLAR TREE**

DISPOSITION PLAN

PROJ. NO.      DWG. NO.      I-□



ALL MECHANICAL EQUIPMENT, BACKFLOW PREVENTERS, DUMPSTER ENCLOSURES, A/C UNITS, ETC., SHALL BE SCREENED IN ADDITION TO THE MINIMUM LANDSCAPE REQUIREMENTS.

ANY PVIOUS AREA TO REMAIN THAT IS DISTURBED BY CONSTRUCTION & IS NOT NOTED ON THE LANDSCAPE PLAN TO HAVE SHRUBS OR GROUNDCOVER SHALL BE SODDED

ALL TREES AND PALMS PLANTED SHALL BE SECURELY GUYED, BRACED, AND/OR STAKED AT THE TIME OF PLANTING UNTIL ESTABLISHED. ALL STABILIZATION SYSTEMS SHALL BE CLEARLY MARKED (FLAGGING, PAINTED, ETC.) TO PREVENT HAZARDS.

ALL EXISTING INVASIVE & EXOTIC SPECIES, SHRUBS, & GROUNDCOVER NOT SHOWN ON THIS PLAN SHALL BE REMOVED FROM SITE

**LANDSCAPE CODE COMPLIANCE CHART**  
**FORT PIERCE - CODE OF ORDINANCES; CH. 22; ART XII**

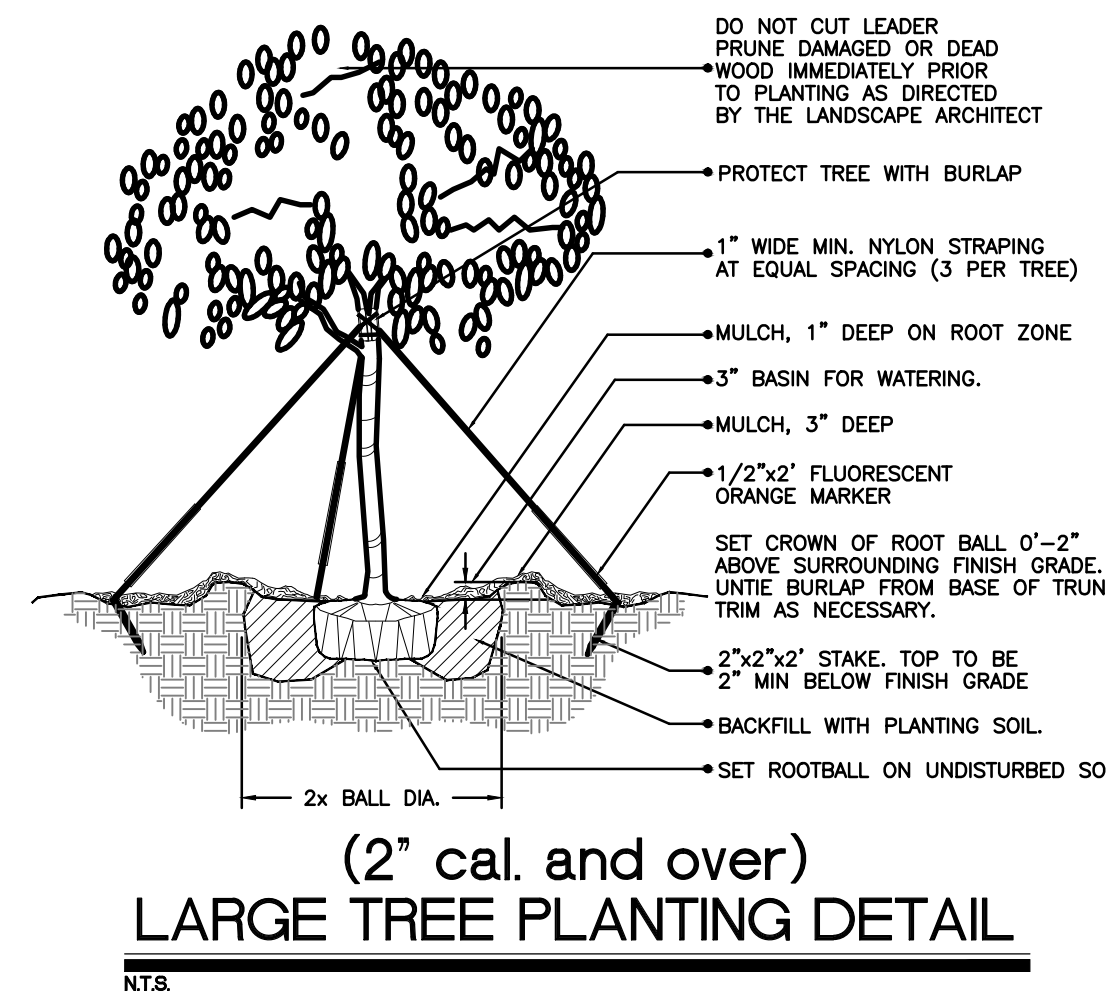
DOLLAR TREE																					
TOTAL SITE AREA:	72,942 sq.ft.																				
TOTAL VUA:	28,358.24 sq.ft.																				
TOTAL LANDSCAPE AREA:	30,928 sq.ft. (0.71 AC.) (42.4%)																				
<b>SEC. 22-187 - GENERAL LANDSCAPE REQUIREMENTS</b>																					
1 - Requirements for Plant Materials Trees: Minimum 12' height x 5" width, 5" clear trunk, 2.5" dbh Palms: 3 Palms = 1 Tree (50% MAX) Shrubs: Min. 24" height at time of Installation																					
4 - Landscape Strips Between Street R/O/W and VUA Use, Building and/or Retention Areas 10' width minimum Landscape Strip 1 Tree/300 sq.ft. (629.22 ft x 10' = 6,292.2 sq.ft.) 36" ht. Continuous Visual Screen																					
6 - Vehicular Use, Building, Retention/Detention Areas Adjacent to Other Property 10' width minimum Landscape Strip North: 1 Tree/200 sq.ft. (194.66 ft x 10' = 1,946.6 sq.ft.) East: 1 Tree/200 sq.ft. (267.25 ft x 10' = 2,672.5 sq.ft.) 6' Continuous Visual Screen if abutting residentially zoned property, shall be planted to form a 3' or higher screen w/in 1 yr max.																					
7 - Interior Vehicular Use Areas 1 sq.ft. of Interior Landscape Area/15 sq.ft. of VUA 1 Tree/100 sq.ft. of Required Interior Landscape Area																					
	<table border="1"> <thead> <tr> <th>REQUIRED</th> <th>PROVIDED</th> </tr> </thead> <tbody> <tr> <td>10'</td> <td>15'</td> </tr> <tr> <td>21 TREES</td> <td>21 TREES</td> </tr> <tr> <td>10 TREES</td> <td>10 TREES</td> </tr> <tr> <td>14 TREES</td> <td>14 TREES</td> </tr> <tr> <td></td> <td>HEDGE</td> </tr> <tr> <td>1890.55 sq.ft.</td> <td>EXCEEDS</td> </tr> <tr> <td>19 TREES</td> <td>19 TREES</td> </tr> <tr> <td><b>TOTAL</b></td> <td><b>64 TREES</b></td> </tr> <tr> <td></td> <td><b>64 TREES*</b></td> </tr> </tbody> </table>	REQUIRED	PROVIDED	10'	15'	21 TREES	21 TREES	10 TREES	10 TREES	14 TREES	14 TREES		HEDGE	1890.55 sq.ft.	EXCEEDS	19 TREES	19 TREES	<b>TOTAL</b>	<b>64 TREES</b>		<b>64 TREES*</b>
REQUIRED	PROVIDED																				
10'	15'																				
21 TREES	21 TREES																				
10 TREES	10 TREES																				
14 TREES	14 TREES																				
	HEDGE																				
1890.55 sq.ft.	EXCEEDS																				
19 TREES	19 TREES																				
<b>TOTAL</b>	<b>64 TREES</b>																				
	<b>64 TREES*</b>																				
* INCLUDES (1) EXISTING TREE #3, COUNTED TOWARDS MIN. LANDSCAPE REQUIREMENTS FOR THE DOLLAR TREE SITE, (5) EXISTING OFFSITE/ADJACENT TREES & (3) EXISTING OFFSITE/ADJACENT PALMS EQ. TO (1) TREE IN CLOSE PROXIMITY TO PROPERTY LINES																					
<b>SEC 22-194 - TREE PROTECTION AND MITIGATION: OVERALL SITE</b>																					
(d)(2) Native Trees with a DBH of 14" or greater Shall be Mitigated Inch:Inch Trees Preserved on-site, which exceed minimum code, count towards mitigation																					
	<table border="1"> <thead> <tr> <th>23" Removed</th> <th>99" Preserved</th> </tr> </thead> <tbody> <tr> <td>0</td> <td>0</td> </tr> <tr> <td>Deficit Inches:</td> <td>0"</td> </tr> </tbody> </table>	23" Removed	99" Preserved	0	0	Deficit Inches:	0"														
23" Removed	99" Preserved																				
0	0																				
Deficit Inches:	0"																				
Planted Trees in Excess of Code Count at 50% towards mitigation:																					
Trees Over Code Minimum:	0																				
Total DBH over Code Minimum:	0"																				
Total Mitigation Required:	0																				

Printed on Monday, August 28, 2017, 9:35 AM by Ryan King

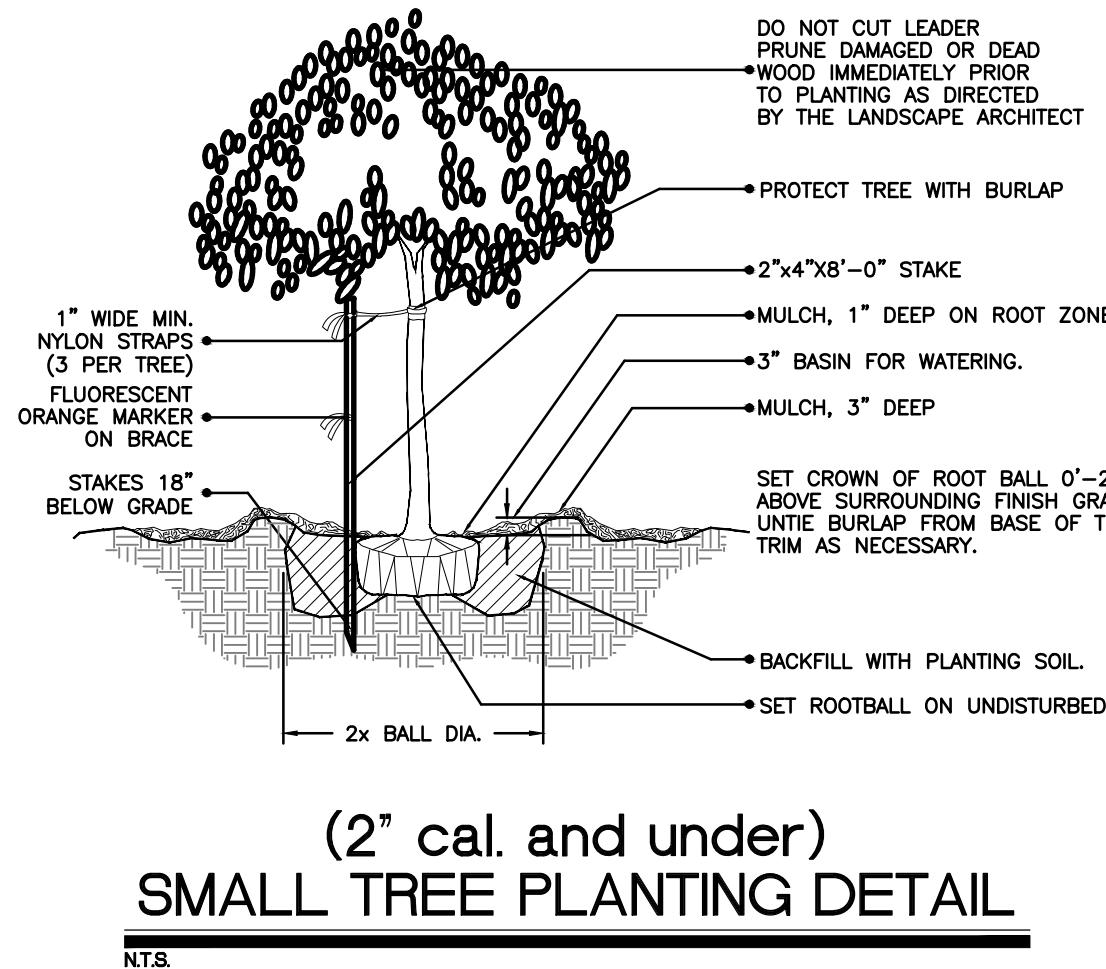
<p>PEBORTH PROFESSIONAL PLAZA  125 W. INDIANTOWN RD. SUITE 206  JUPITER, FL 33458  PH: (561) 203-7503  FX: (561) 203-7721  www.ThomasEngineeringGroup.com</p>	<p>REV. DATE RJK DESCRIPTION</p>	<p>RYAN J. KING EBRAHIMIAN</p> <p>REGISTERED LANDSCAPE ARCHITECT  August 28, 2017  FLORIDA LICENSE NO. 6667324  FLORIDA BUSINESS CERT. OF AUTH. NO. 27528</p>	<p>LANDSCAPE PLAN</p>
	<p>DOCUMENT CONTROL</p>	<p>PROJ. NO. DWG. NO. L-0</p>	

# PLANT SCHEDULE

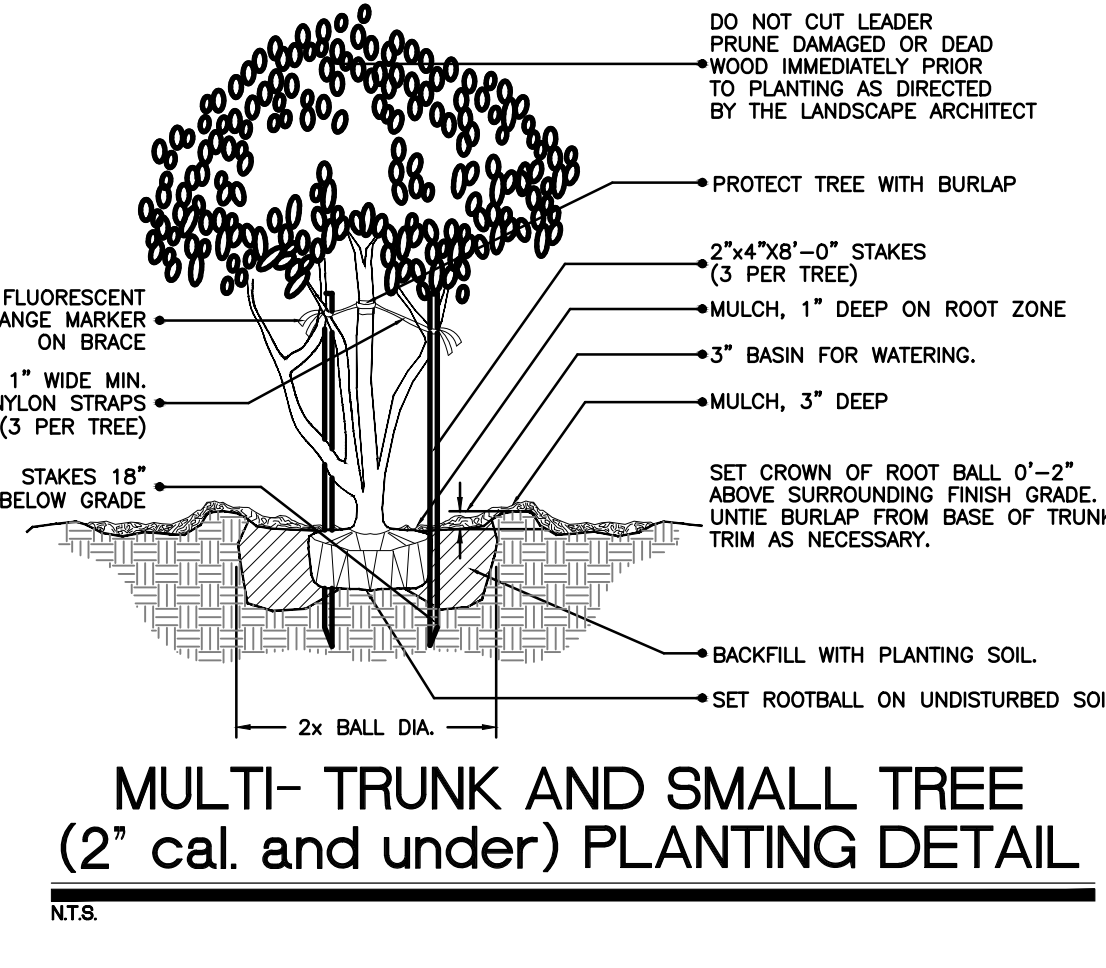
TREES	CODE	QTY	COMMON NAME	BOTANICAL NAME	SPECIFICATIONS	CAL/DBH	HEIGHT	SPREAD	NATIVE	XERIC	REMARKS
	CD	3	Pigeon Plum	Coccoloba diversifolia	45 gal	2.5" DBH	12' Ht	5'	Yes	High	5' CT
	CE	4	Green Buttonwood	Conocarpus erectus	B & B	2.5" DBH	12' Ht	5-6'	Yes	High	5' CT
	CW	15	Anacahuita	Cordia alliodora 'White Geiger'	30 gal	2.5" DBH	12' Ht	3-4'	Yes	High	
	IE	6	Eagleton Holly	Illicium attenuatum 'Eagleton'	B & B	2.5" Cal	12' Ht	5-6'	Yes	High	6' CT
	LI	12	Crape Myrtle	Lagerstroemia indica 'Tusagee'	45 gal	2.5"	12' Ht	6'	No	High	5' CT
	MG	1	Magnolia 'Banchard'	Magnolia grandiflora	B & B	2.5" DBH	12' Ht	5-6'	Yes	High	6' CT
	QV	9	Southern Live Oak	Quercus virginiana	45 gal	2.5" DBH	12' Ht	5-6'	Yes	High	5.5' CT
	UA	5	Winged Elm	Ulmus alata	B & B	2.5" DBH	12' Ht	5'	Yes	High	6' CT
PALM TREES	CODE	QTY	COMMON NAME	BOTANICAL NAME	SPECIFICATIONS	CAL/DBH	HEIGHT	SPREAD	NATIVE	XERIC	REMARKS
	SP	6	Cabbage Palm	Sabal palmetto	B & B		18-22' oa	10'	Yes	High	
RELOCATED TREES	CODE	QTY	COMMON NAME	BOTANICAL NAME	SPECIFICATIONS	CAL/DBH	HEIGHT	SPREAD	NATIVE	XERIC	REMARKS
	LI-R	3	Crape Myrtle	Lagerstroemia indica 'Tusagee'	NA	multi-trunk	aries	aries	No	High	Tree# 8 & 9; See sheet L-1
SHRUBS	CODE	QTY	COMMON NAME	BOTANICAL NAME	SPECIFICATIONS	SPACING	HEIGHT	SPREAD	NATIVE	XERIC	REMARKS
	CER	26	Buttonwood	Conocarpus erectus	NA	30"	36"	24-30"	Yes	High	
	IPM	132	Anise	Illicium parviflorum	3 gal	24"	24"	24"	Yes	High	to base
	MYR	353	Compact Simpson's Stopper	Miconia repens 'compacta'	NA	30"	24"	24"	Yes	High	to base;
SHRUB AREAS	CODE	QTY	COMMON NAME	BOTANICAL NAME	SPECIFICATIONS	SPACING	HEIGHT	SPREAD	NATIVE	XERIC	REMARKS
	ARA	112	Perennial Peanut	Arachis glabra	n/a	24"	16-18"	16-18"	Yes	High	
	DUR	19	Scarlet Bush	Duranta repens 'Dwarf Golden'	n/a	18"	16-18"	16-18"	Yes	High	Fu to base
	HAC	50	Pumango	Hamelia patens 'Compacta'	n/a	24"	18-24"	18-24"	Yes	High	Fu to base
	PLU	131	Variegated Moc Orange	Pittosporum variegata	3 gal	24"	18"	18"	No	Medium	Soil to flowers
	PTV	64	White African Iris	Pittosporum tomentosum 'Variegata'	3 gal	24"	18"	20"	No	High	
GROUND COVERS	CODE	QTY	COMMON NAME	BOTANICAL NAME	SPECIFICATIONS	SPACING	HEIGHT	SPREAD	NATIVE	XERIC	REMARKS
	DII	52	Bahia Grass	Dietes iridoides	1 gal	18"	12-14"	8-10"	No	Medium	
	ILX	106	Dwarf Schilling's Holly	Illicium omitoria 'Schilling's Dwarf'	3 gal	18"	12-14"	12-14"	Yes	High	
SOD/SEED	CODE	QTY	COMMON NAME	BOTANICAL NAME	SPECIFICATIONS	SPACING	HEIGHT	SPREAD	NATIVE	XERIC	REMARKS
	PAS	13,768 sq	Bahia Sod	Paspalum notatum	sod				Yes		Bahia Sod



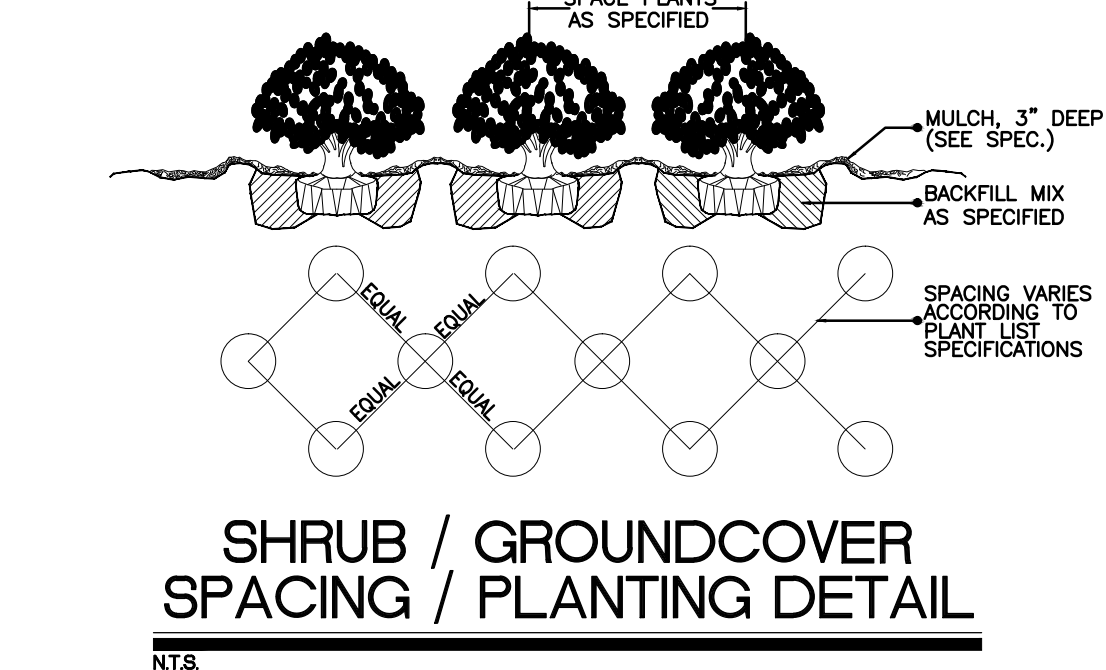
(2" cal. and over)  
LARGE TREE PLANTING DETAIL



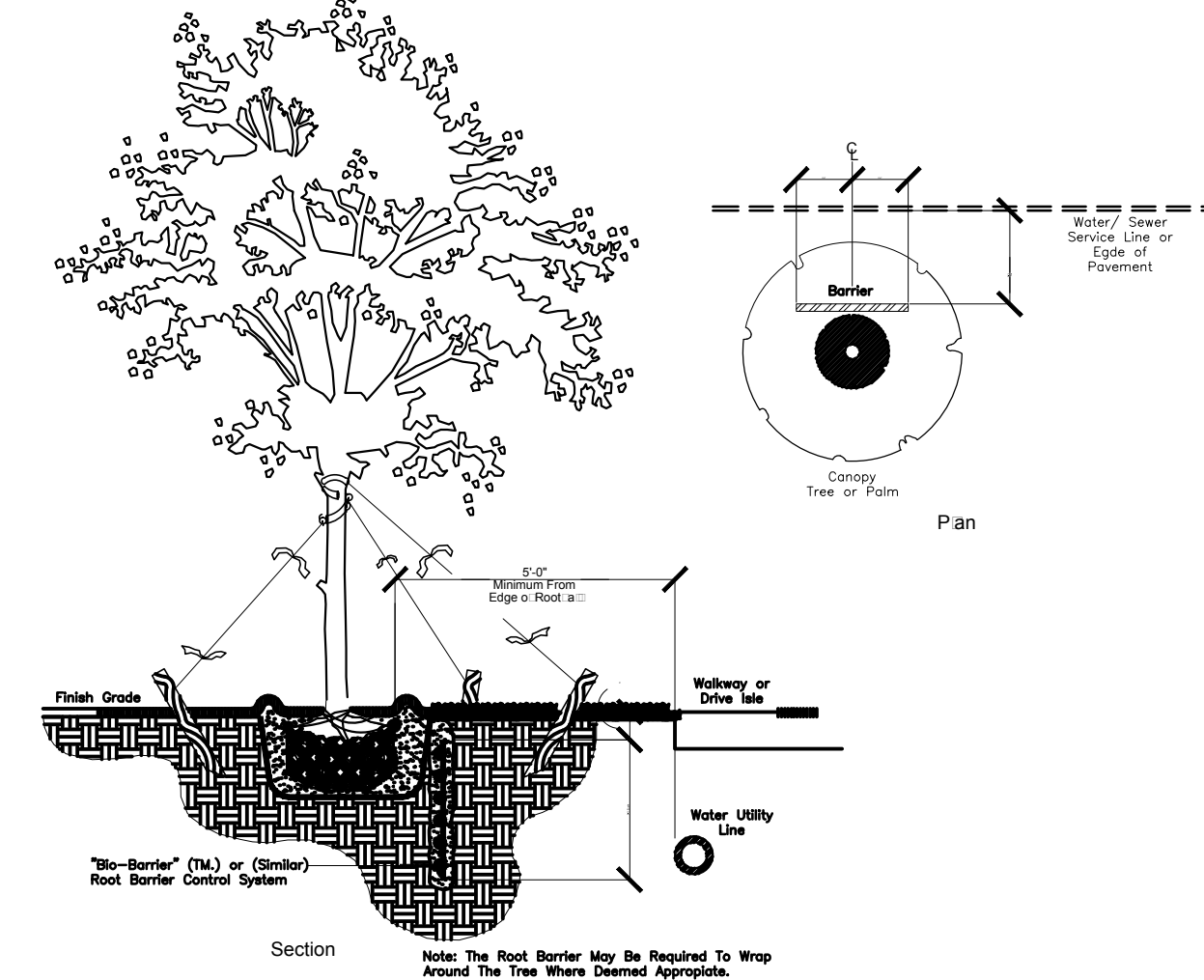
(2" cal. and under)  
SMALL TREE PLANTING DETAIL



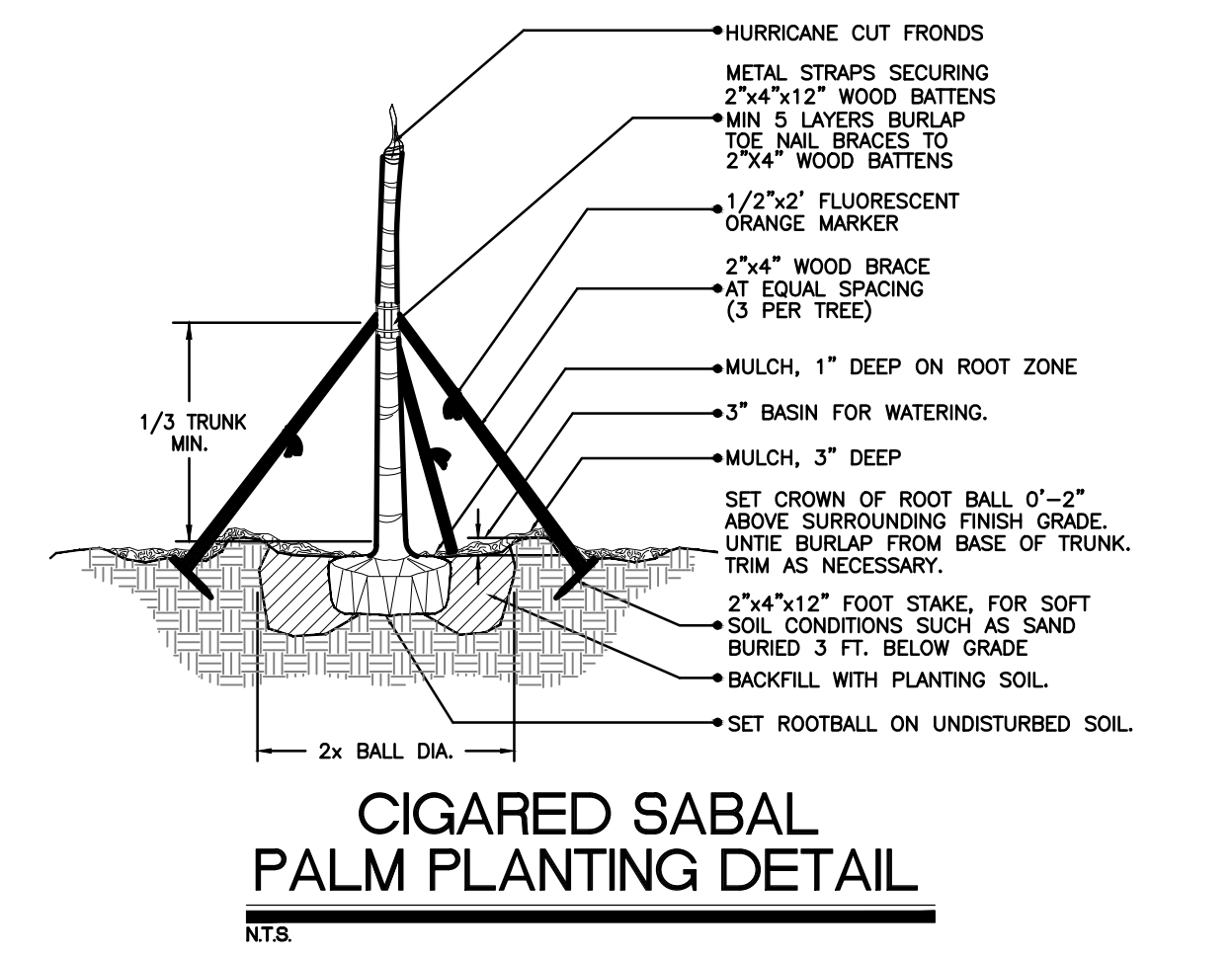
MULTI-TRUNK AND SMALL TREE  
(2" cal. and under) PLANTING DETAIL



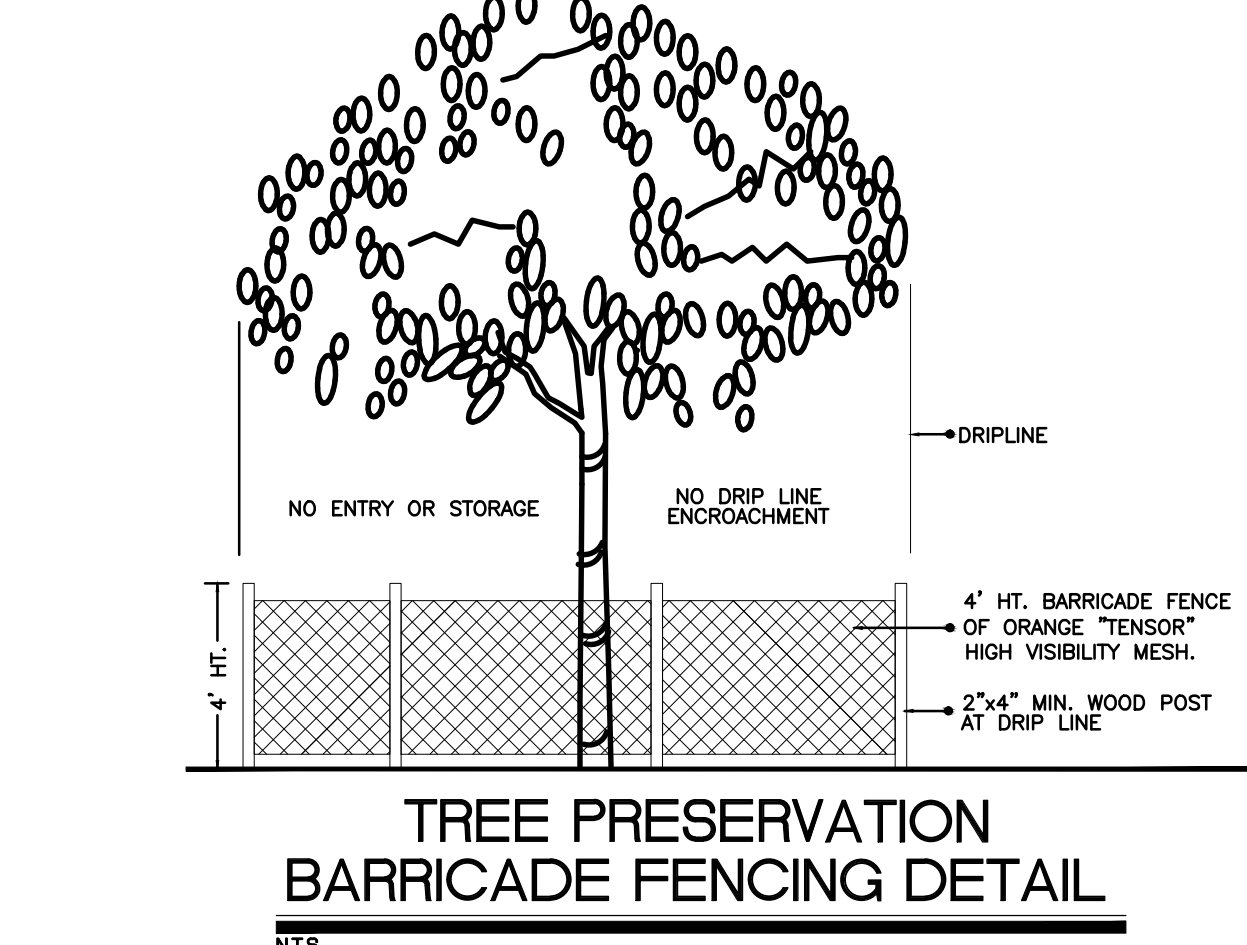
SHRUB / GROUNDCOVER  
SPACING / PLANTING DETAIL



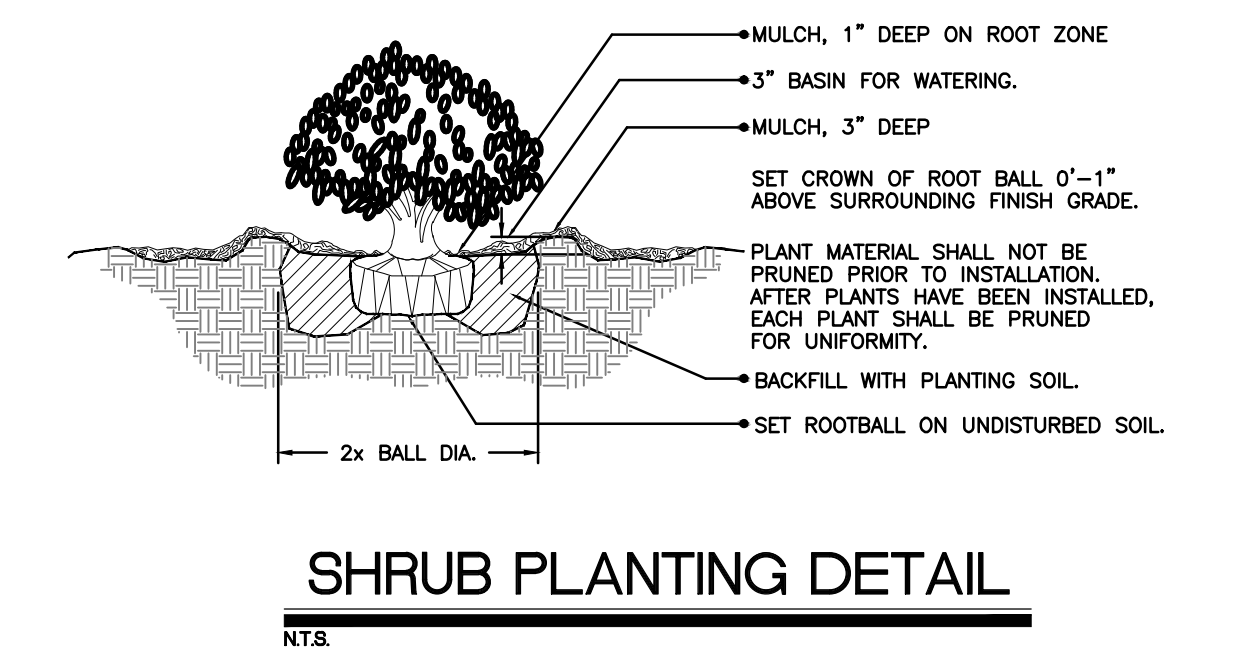
TYPICAL ROOT BARRIER APPLICATION DETAIL



CIGARED SABAL  
PALM PLANTING DETAIL



TREE PRESERVATION  
BARRICADE FENCING DETAIL



SHRUB PLANTING DETAIL

"Bio-Barrier" is Manufactured By:  
Flowma, Inc., 70 Old Hickory Blvd., P.O. Box 1511  
Old Hickory, TN 37138 - Phone: 1-800-25-ROOTS

Applicable Use of Root Barriers:  
In a Canopy: Trees and/or Palms to be Installed Within Less Than (10') Feet Separation From A Water Main (or Sewer Line) and/or Sewer Main (or Gas Line). The Landscape Contractor Shall Install a Root Barrier Parallel To The Utility, As Directed and as per This Detail. The Contractor Shall Maintain A 20' FT. or a Minimum Height (as Directed) From Outside Edge of Root to The Utility or an Pipe or Concrete Surface.

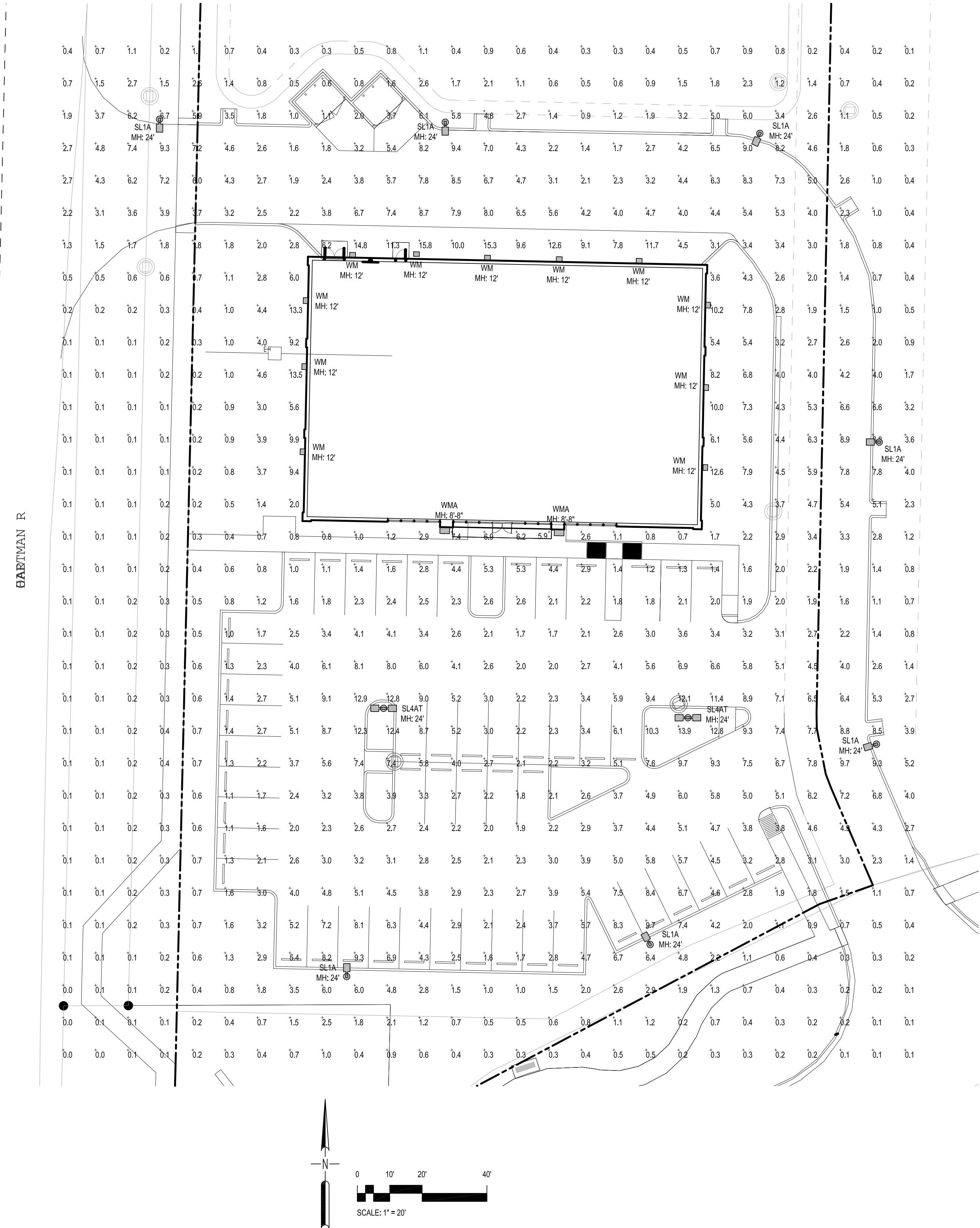
The Landscape Contractor Shall: The Existing Locations of The Applicable Water Utilities, In The Field, Prior To Any Tree Installations Using A Root Barrier.

Suggested Installation Method:  
Dig A Vertical Trench Between The Root Source of The Tree and The Surfaces and/or Utility Line To Be Protected. The Trench Must Be At Least 6" in Length (Centered On Tree) and Must Be at Least 6" or in Depth From To The Applicable Surface. Seal the Utility or Pipe. Note: For New Tree Installations, Trench Must Be Digged At The Same Time as The Hole For The Applicable Tree and/or Palm.

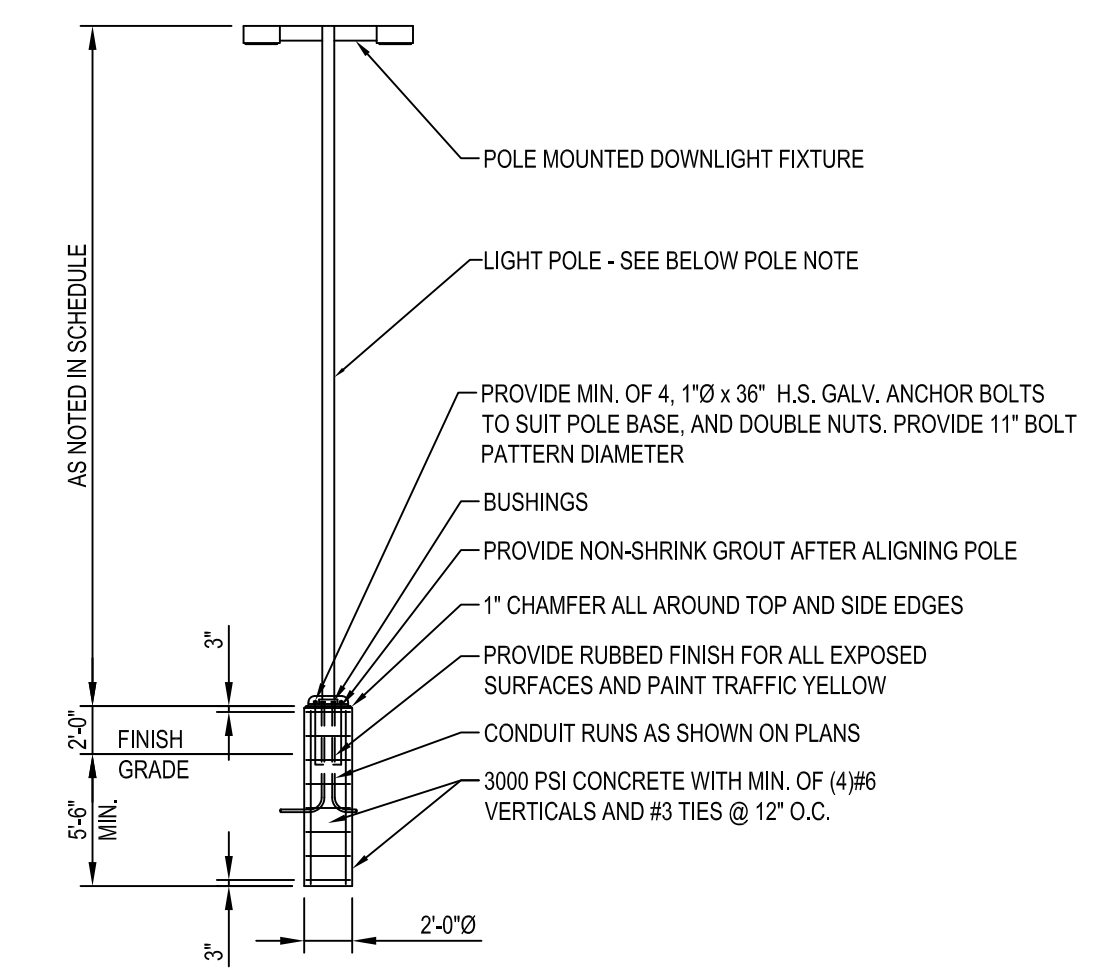
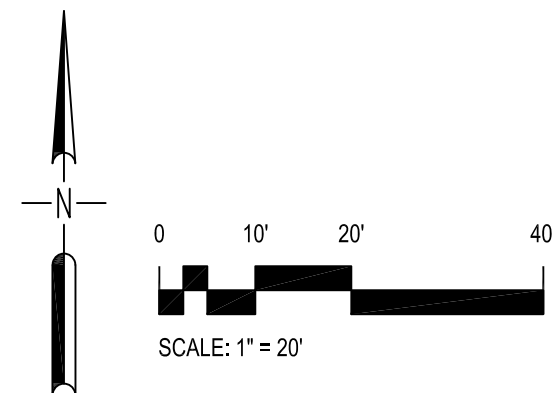
Using Impermeable Geotextiles: "Bio-Barrier" and Firm To Fit The Specific Application. Insert The Barrier Vertically Into The Trench, With The Top Edge of The Barrier (2") 5" Inches Below The Soil Surface.

Tamp Back Firmly Into Trench With "Bio-Barrier" Contained, Eliminating Air Pockets or Soil Voids. According To The Coding and Labels on The Product B. Saturating The Backfill and "Bio-Barrier" With Water. A Soil Compaction Smooth The Soil Surface To Finish Grade, Allowing Excess Material For Soil Setting.

 PEBWORTH PROFESSIONAL PLAZA 125 W. INDIANTOWN RD, SUITE 206 JUPITER, FL 33458 PH: (561) 203-7503 FX: (561) 203-7721 www.ThomasEngineeringGroup.com	REV. DATE RJK RJK DESCRIPTION DOCUMENT CONTROL	RYAN J. KING EBRAHIMIAN REGISTERED LANDSCAPE ARCHITECT August 28, 2017 FLORIDA LICENSE No. 6667324 FLORIDA BUSINESS CERT. OF AUTH. No. 27528	 LANDSCAPE SCENE DETAILS PROJ. NO. DWG. NO. L-
---	--	--	--



BARTMAN R



**PAINTING NOTE:**  
ALL POLE BASES SHALL BE PAINTED TRAFFIC YELLOW.

**POLE NOTE:**  
22 STEEL ROUND TAPERED POLE - 5\"/>

Calculation Summary							
Label	CalcType	Units	Avg	Max	Min	Avg/Min	
ALL POINTS AT GRADE	Planar	Illuminance	Fc	3.01	15.8	0.0	N/A
PARKING LOT SUMMARY		Illuminance	Fc	4.40	13.9	1.0	4.40

Luminaire Schedule							
Symbol	Qty	Label	Arrangement	Total Lamp Lumens	LLF	Description	Arr. Watts
☐	11	WM	SINGLE	4383.8	0.950	NEL-WP140	41.2
☐	2	WMA	SINGLE	N.A.	0.950	XPWS-FT-LED-28-350-NW-LJE	34
☐	2	SL4AT	BACK-BACK	18567	0.950	NEL-AL150 T4 TWIN 180 W/22' POLE AND 2' BAS	308.2
☐	7	SL1A	SINGLE	20069	0.950	NEL-AL150 T3 W/22' POLE AND 2' BASE	152.93

**GENERAL NOTE:**  
ALL FIXTURES & POLES ARE PROVIDED BY DOLLAR TREE FOR INSTALLATION BY CONTRACTOR. ANY SONOTUBES, CONDUIT, ETC. ARE THE CONTRACTOR'S RESPONSIBILITY TO PROVIDE & INSTALL. SEE LEGEND FOR MOUNTING HEIGHTS. CONTRACTOR SHALL CONTACT NATIONAL ENERGY & LIGHT AS SOON AS NOTICE TO PROCEED IS ISSUED FOR ORDERING DOLLAR TREE SUPPLIED SITE LIGHTING.

PETER COLON - PROJECT MANAGER  
617-610-7540  
peterc@nelcompany.com

JIM SCHMIDT  
603-759-5561  
jschmidt@nelcompany.com

	DOLLAR TREE	
	FORT PIERCE, FL.	
SITE LIGHTING & PHOTOMETRICS PLAN		
PROJ. NO.	1605-79	DWG. NO.
C-4.1		

**CG**  
3901 SPRING HILL AVENUE  
MOBILE, ALABAMA 36608  
(251) 344-7073 FAX (251) 343-9179

REV.	DATE	DESCRIPTION

DOCUMENT CONTROL

x-x-x- PROJ. NO. 1605-79 DWG. NO. C-4.1