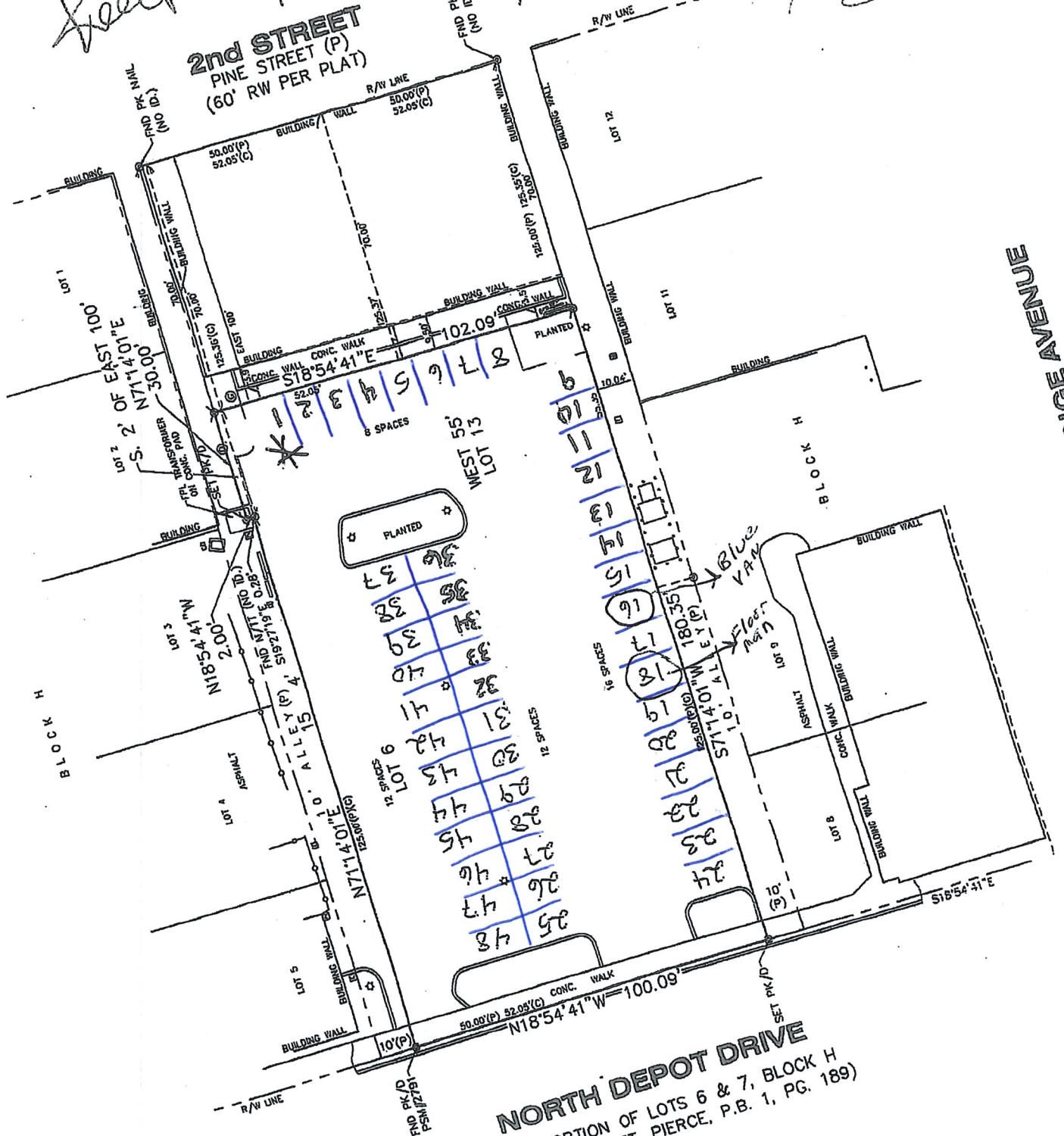


(43)

Keep for reference
not attached



NORTH DEPOT DRIVE
(A PORTION OF LOTS 6 & 7, BLOCK H
PER MAP OF FT. PIERCE, P.B. 1, PG. 189)

BOUNDARY SURVEY

GREGORY POPE
PREPARED FOR:
Ft. Pierce, Florida
177 N. 2ND Street

GEOMATICS SERVICES Inc.
PROFESSIONAL SURVEYORS & MAPPERS
1924 TUCKER ROAD, SUITE 100
FT. PIERCE, FL 34908
(772) 418-8381 FAX (772) 408-4208
CERTIFICATE OF AUTHORIZATION LB# 7672

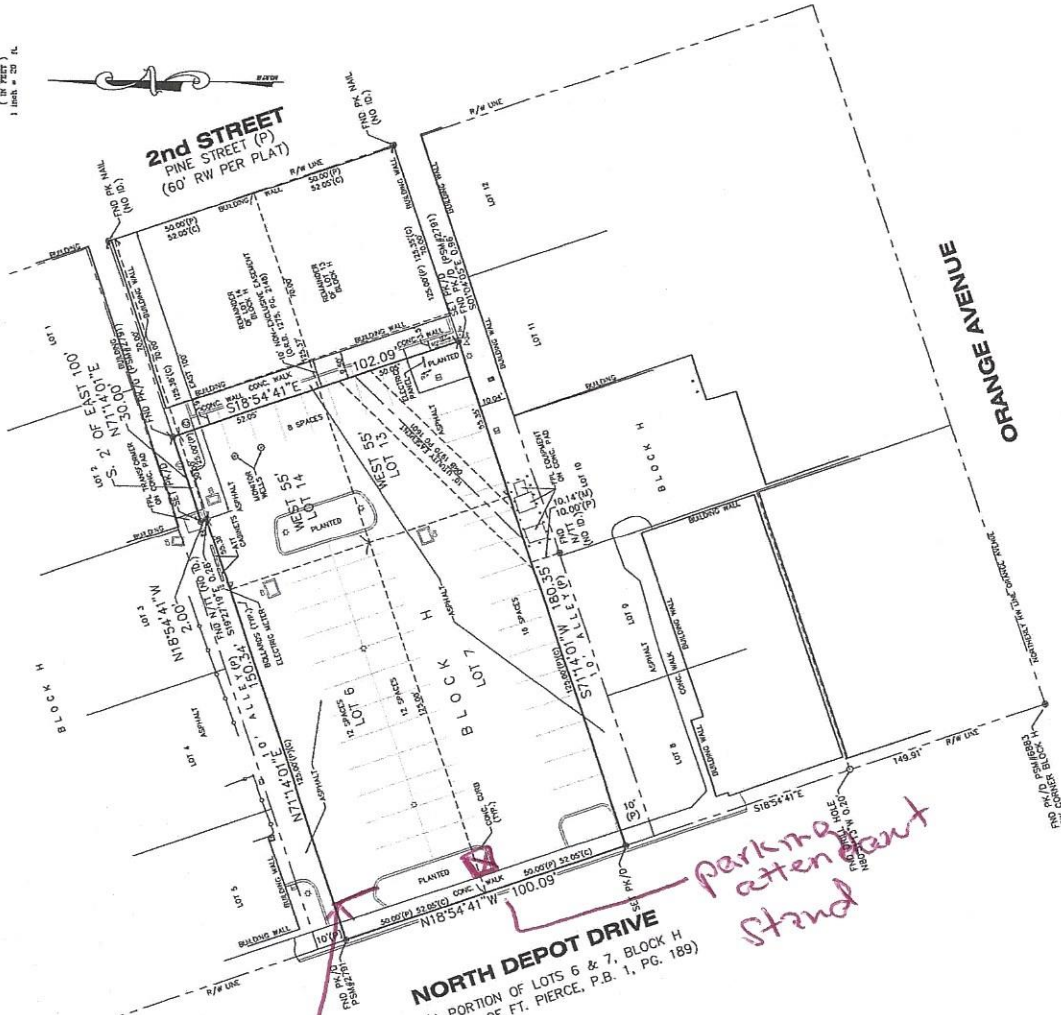
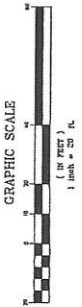
DATE	03/05/2014
PROJECT	177 N. 2ND STREET
CLIENT	GREGORY POPE
SCALE	AS SHOWN
SHEET NO.	1
OF	1

- LEGEND**
- PLAT DATA
 - DEED
 - POINT OF COMMENCEMENT
 - POINT OF TANGENCY
 - PERMANENT REFERENCE MONUMENT
 - 3/4" IRON ROD & CAP STAMPED "LB7672"
 - IRON ROD MONUMENT
 - OFFICIAL RECORDS BOOK
 - FACE BOOK
 - FACE
 - CENTRAL ANGLE
 - ARC LENGTH
 - CHORD BEARING
 - UNDERGROUND ELECTRIC
 - UNDERGROUND WATER
 - CONCRETE STRUCTURE
 - WATER MAIN
 - PUBLIC UTILITY EASEMENT
 - UTILITY EASEMENT
 - CENTRELINE
 - SPRINKLER
 - STATION
 - N.A.V.D.
 - FLORIDA DEPARTMENT OF TRANSPORTATION
 - CERTIFIED CORNER REPORT
 - P.R.D.
 - PARCEL IDENTIFICATION NUMBER
 - BACKFLOW PREVENTER

- DESCRIPTION**
- LOT 13 AND 14 OF THE RECREATION OF BLOCK 4 OF ARCON LOTS PLAT OF FORT PIERCE, recorded in Plat Book 1, Page 102, of the Public Records of Ft. Pierce, Florida.
 - LOT 13 AND 14 OF THE RECREATION OF BLOCK 4 OF ARCON LOTS PLAT OF FORT PIERCE, recorded in Plat Book 1, Page 102, of the Public Records of Ft. Pierce, Florida.
 - LOT 13 AND 14 OF THE RECREATION OF BLOCK 4 OF ARCON LOTS PLAT OF FORT PIERCE, recorded in Plat Book 1, Page 102, of the Public Records of Ft. Pierce, Florida.

NOTES

- 1) REPRODUCTIONS OF THIS MAP ARE NOT VALID WITHOUT THE SIGNATURE AND ORIGINAL INKED SEAL OF A FLORIDA LICENSED SURVEYOR.
- 2) THIS SURVEY WAS CONDUCTED IN ACCORDANCE WITH THE FLORIDA SURVEYING AND MAPPING ACT, CHAPTER 473, F.S.
- 3) UNDERGROUND UTILITIES, UTILITY LOCATIONS, TRENCHES AND MANHOLES WERE NOT LOCATED AS PART OF THIS SURVEY.
- 4) THE LOCATION OF ALL UTILITIES, TRENCHES AND MANHOLES WERE NOT LOCATED AS PART OF THIS SURVEY.
- 5) THE LOCATION OF ALL UTILITIES, TRENCHES AND MANHOLES WERE NOT LOCATED AS PART OF THIS SURVEY.
- 6) THE LOCATION OF ALL UTILITIES, TRENCHES AND MANHOLES WERE NOT LOCATED AS PART OF THIS SURVEY.
- 7) THE LOCATION OF ALL UTILITIES, TRENCHES AND MANHOLES WERE NOT LOCATED AS PART OF THIS SURVEY.
- 8) THE LOCATION OF ALL UTILITIES, TRENCHES AND MANHOLES WERE NOT LOCATED AS PART OF THIS SURVEY.
- 9) THE LOCATION OF ALL UTILITIES, TRENCHES AND MANHOLES WERE NOT LOCATED AS PART OF THIS SURVEY.
- 10) THE LOCATION OF ALL UTILITIES, TRENCHES AND MANHOLES WERE NOT LOCATED AS PART OF THIS SURVEY.
- 11) THE LOCATION OF ALL UTILITIES, TRENCHES AND MANHOLES WERE NOT LOCATED AS PART OF THIS SURVEY.
- 12) THE LOCATION OF ALL UTILITIES, TRENCHES AND MANHOLES WERE NOT LOCATED AS PART OF THIS SURVEY.
- 13) THE LOCATION OF ALL UTILITIES, TRENCHES AND MANHOLES WERE NOT LOCATED AS PART OF THIS SURVEY.
- 14) THE LOCATION OF ALL UTILITIES, TRENCHES AND MANHOLES WERE NOT LOCATED AS PART OF THIS SURVEY.
- 15) THE LOCATION OF ALL UTILITIES, TRENCHES AND MANHOLES WERE NOT LOCATED AS PART OF THIS SURVEY.
- 16) THE LOCATION OF ALL UTILITIES, TRENCHES AND MANHOLES WERE NOT LOCATED AS PART OF THIS SURVEY.
- 17) THE LOCATION OF ALL UTILITIES, TRENCHES AND MANHOLES WERE NOT LOCATED AS PART OF THIS SURVEY.
- 18) THE LOCATION OF ALL UTILITIES, TRENCHES AND MANHOLES WERE NOT LOCATED AS PART OF THIS SURVEY.
- 19) THE LOCATION OF ALL UTILITIES, TRENCHES AND MANHOLES WERE NOT LOCATED AS PART OF THIS SURVEY.
- 20) THE LOCATION OF ALL UTILITIES, TRENCHES AND MANHOLES WERE NOT LOCATED AS PART OF THIS SURVEY.
- 21) THE LOCATION OF ALL UTILITIES, TRENCHES AND MANHOLES WERE NOT LOCATED AS PART OF THIS SURVEY.
- 22) THE LOCATION OF ALL UTILITIES, TRENCHES AND MANHOLES WERE NOT LOCATED AS PART OF THIS SURVEY.
- 23) THE LOCATION OF ALL UTILITIES, TRENCHES AND MANHOLES WERE NOT LOCATED AS PART OF THIS SURVEY.
- 24) THE LOCATION OF ALL UTILITIES, TRENCHES AND MANHOLES WERE NOT LOCATED AS PART OF THIS SURVEY.
- 25) THE LOCATION OF ALL UTILITIES, TRENCHES AND MANHOLES WERE NOT LOCATED AS PART OF THIS SURVEY.



As Built

Post for closure

parking attendant stand

NORTH DEPOT DRIVE
(A PORTION OF LOTS 6 & 7, BLOCK H PER MAP OF FT. PIERCE, P.B. 1, PG. 189)

ORANGE AVENUE

CERTIFIED TO:
UNIVERSITY OF FLORIDA
INSURANCE COMPANY
STATE OF FLORIDA
FORT PIERCE, FLORIDA

[Signature]

03/05/2014
SIGNATURE DATE:
JOB # 14-120

TOW AWAY ZONE
24 HRS. 7 DAYS A WK.
UNAUTHORIZED VEHICLES OR
VESSELS WILL BE TOWED
AT OWNER'S EXPENSE
TREASURE COAST TOWING

**RESERVED PARKING
NOW AVAILABLE
772-801-5729
PRIVATE PARKING
ONLY**

**RESERVED PARKING
NOW AVAILABLE
772-801-5729
PRIVATE PARKING
ONLY**



A large, multi-story white building with a flat roof and a small red-tiled roof section on the right side. The building has several windows and a central entrance area. It is partially obscured by trees in the foreground.

A smaller, multi-story yellowish-tan building with a flat roof and a small tower-like structure on the right side. It has several windows and a covered entrance area. A person is standing near a car in front of it.

A dark blue SUV parked in the foreground on the left side of the parking lot.

A dark grey SUV parked in the middle of the parking lot.

A dark blue sedan parked in the middle of the parking lot.

A dark red sedan parked in the middle of the parking lot.

A dark grey pickup truck parked in the middle of the parking lot.

A white sedan parked in the middle of the parking lot.

A dark grey sedan parked in the middle of the parking lot.

A red pickup truck parked in the middle of the parking lot.

A silver sedan parked in the middle of the parking lot.

A dark grey sedan parked in the middle of the parking lot, with a person standing next to it.