



Public Works Department
Gateway Beautification Report
August 20, 2018

Fort Pierce City Commission Conference Agenda

GOAL

- Gather feedback from the community on gateway beautification.

COMMUNITY INPUT MEETING

- A meeting was held on May 30, 2018 at the River Walk Center.
- Approximately 30 people attended and actively participated.



Gateways to beautify



Okeechobee Rd



Orange Ave



S. US1



N. US1



S. 25th

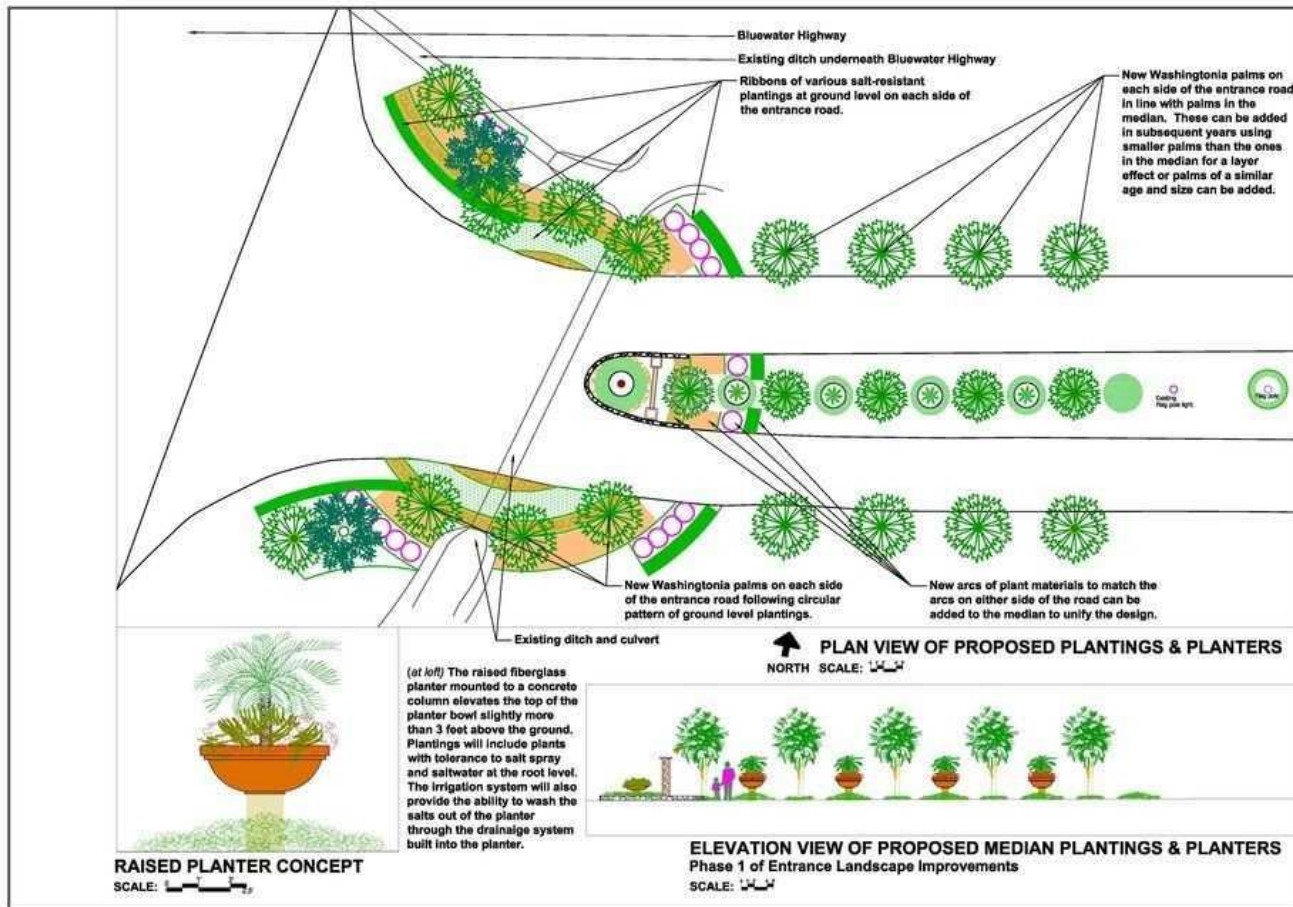


N. 25th

INFORMATION SOUGHT

- Which landscape style do you prefer?
- Which overpass style do you prefer?
- Which monument style sign do you prefer?
- Which archway style do you prefer?
- What is most important in creating an entry feature?

PREFERENCES



Bob Duke
6/28/2012
FINAL PLAN By:
Bob Duke
8/8/2012
NOT FOR CONSTRUCTION



TREASURE ISLAND Entrance & Median Landscape Plan



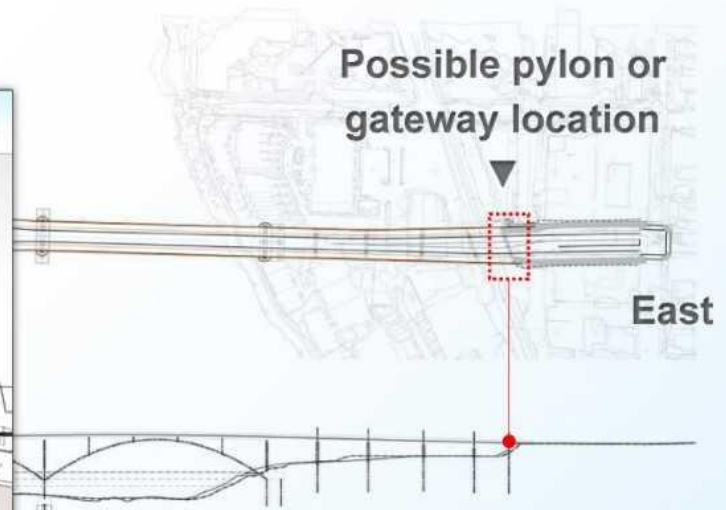
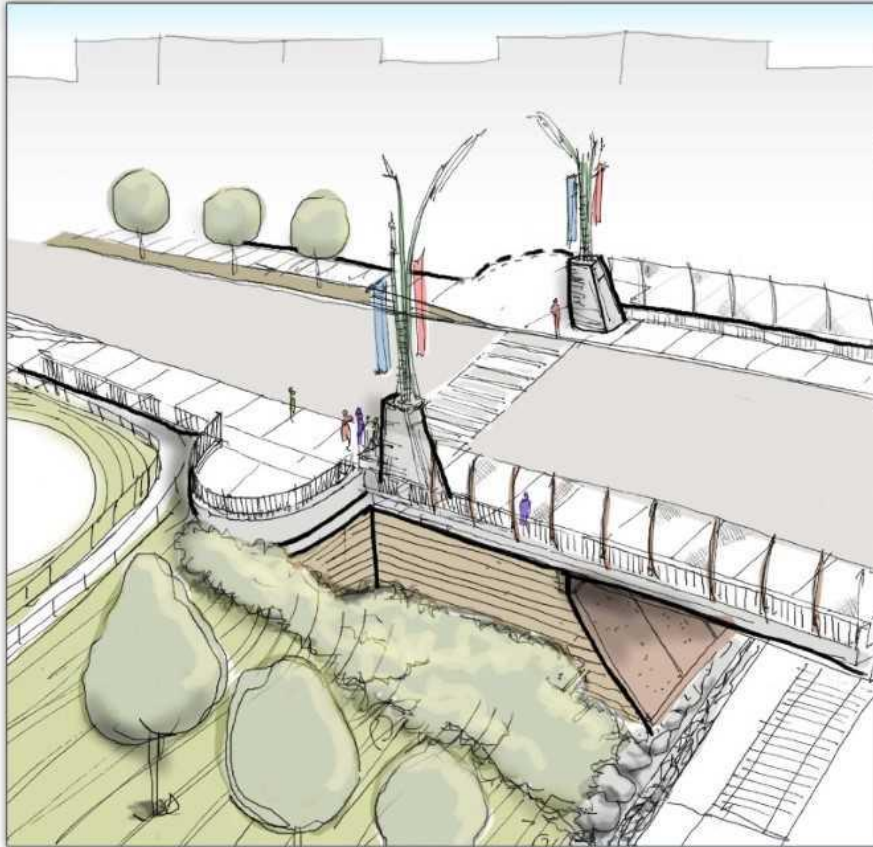
MASTER PLAN of ENTRANCE

This view depicts the Beachside entrance area as it could look through progressive additions of planting beds and irrigation. The current layout with the two beds near the Bluewater Highway results in some disconnection between the median landscaping and those planters. This plan seeks to harmonize and connect those two areas.

MP
Master Plan

PREFERENCES

Pylons / Gateway



◀ Conceptual gateway pylons

PREFERENCES



PREFERENCES



WHAT IS MOST IMPORTANT?

What is most important in creating an entry feature?

Monument style sign with City Name/Logo only	4
Monument style sign with City name/incorporating Artwork?	10
Lettering along Interstate Exit	1
Archway	4
Upgraded, Lush Landscaping	0
None, please don't spend the money	3

Almost everyone in attendance favored monument signs, with the majority of participants wanting to see signage with artistic features.

While many had selected their favorite landscape layout, no one placed a dot in that category.

MONUMENT EXAMPLES



Lake County



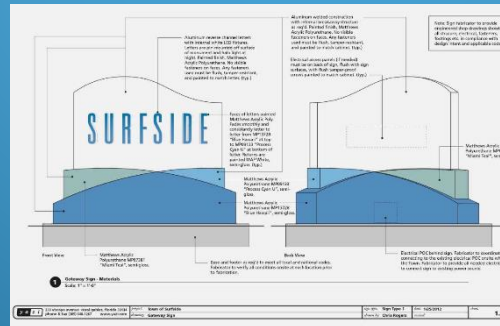
Deerfield Beach



Jersey Village



Pembroke Pines FL



Surfside



Downers Grove

RECOMMENDATION

It is the recommendation of this Team to seek the services of a professional land design firm to create three different monument sign concepts for consideration.

QUESTIONS

?