



The APLI

Mission

Statement

The mission of the Agricultural and Labor Program, Inc. is to propose, implement, and advocate developmental and human service delivery programs for the socially and economically disadvantaged; children and families; and farmworkers.

In the forty plus years since our humble beginnings, the Agricultural and Labor Program has grown to be the most wide reaching aid organization in the state of Florida. We continue to commit ourselves to bridging social and economic gaps through public service and the creation of opportunity where there was none before.

FACTS ABOUT THE AGENCY

The Agricultural and Labor Program, Inc. (ALPI) is a private, nonprofit, community-based organization chartered by the State of Florida to provide assistance and services to the migrant and seasonal farm workers' population, the rural poor, and disenfranchised throughout the state. The program is designed to promote involvement of the poor in the decision-making process that affects their lives.

In the Spring of 1977, a new headquarters office of The Agricultural and Labor Program, Inc. was dedicated in a ribbon cutting ceremony near Winter Haven, Florida. The occasion pointed up a significant milestone for the Agricultural Labor Project which the Coca-Cola Company Foods Division established in 1968 to raise the quality of life for farm workers in its Florida citrus operations. Now restructured as an incorporated entity, The Agricultural and Labor Program, Inc. is well into an extended program reaching beyond the employees of Coca-Cola.

ALPI's programs are based on five underlying principles that guide its activities. They are as follows:

1. **Involvement of People:** Programs will be effective only to the extent that they fully involve workers themselves in determining solutions to their own problems thereby creating their own destiny.
2. **Emphasis on long-term Accomplishments Rather Than Promises:** The emphasis of the programs must be on accomplishments rather than promises.
3. **Assurance of Economic Viability:** The programs will be truly successful only when their economic base is viable, self - sustaining, and self-expanding.
4. **Emphasis on self-help:** Programs will emphasize the self-help potentials that exist within all individuals.
5. **A Sound Integrated Total Systems Approach:** The complexities of the problems confronted in the projects call for systematic, sustained, and fully integrated approaches to bring about social change.

The organization, as mandated by the Guiding Principles, designs and seeks funding for programs that are addressed to the following areas:

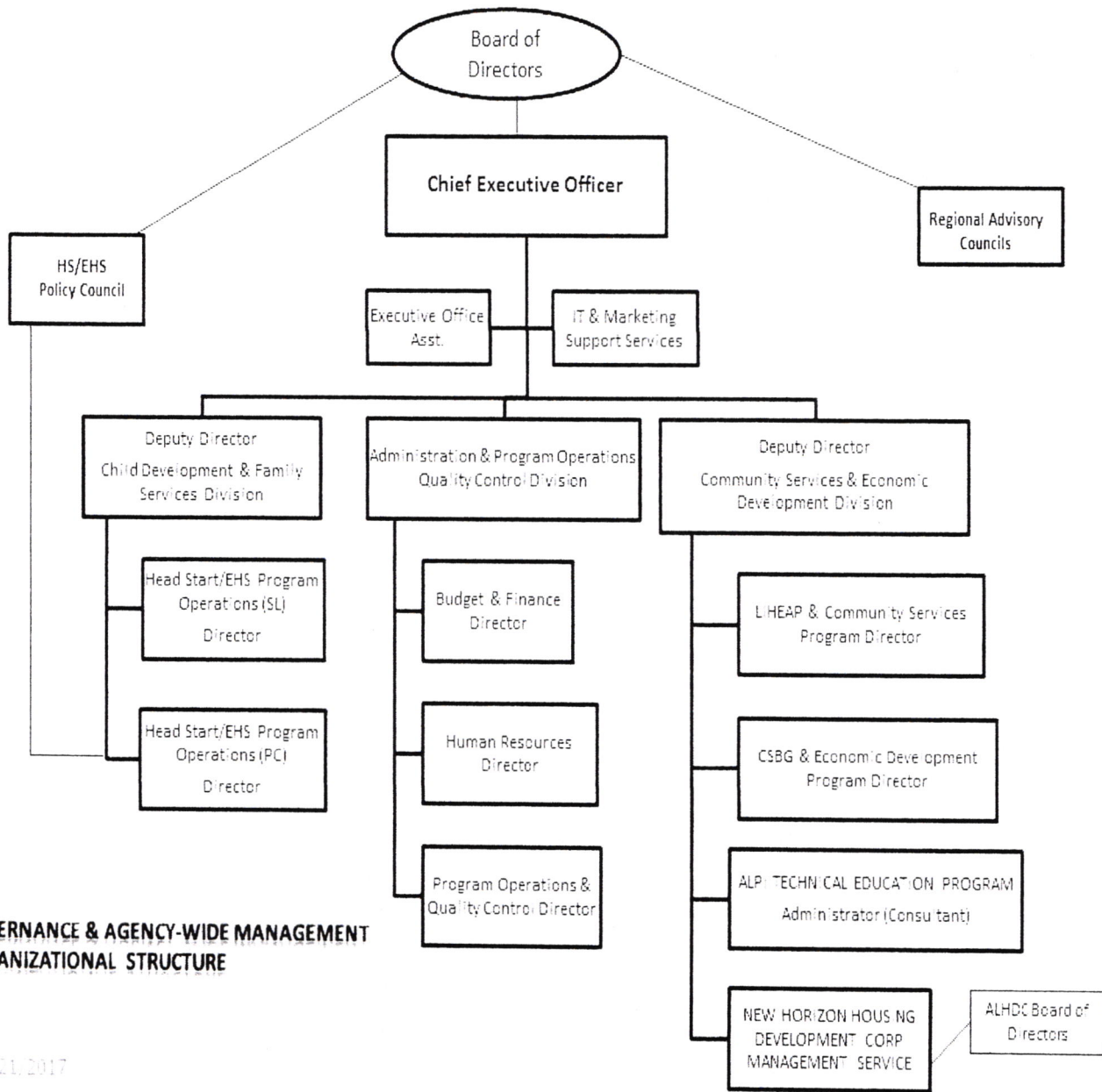
Social Services, Employment and Training, Child Development, Housing, Community Awareness, Energy, Education, Health Education, Information and Referral, Nutrition and Economic Development

In the years since the project was originally founded by Coca-Cola, The Agricultural and Labor Program, Inc. has continued to grow and to expand agency efforts to assist those persons that the organization was chartered to serve. This effort is continuous and will exist as long as there are persons needing service.

For this reason, The Agricultural and Labor Program, Inc. will always be known as **"A Project in Progress."**

ORGANIZATION STRUCTURE AT-A-GLANCE

The Agricultural and Labor Program, Inc.'s capacity to establish and maintain effective oversight of program operations and accountability for federal funds starts with the Board of Directors who continues to demonstrate a strong foundation of leaderships at the national, state and local levels. Moreover, the Board of Directors are legally and fiscally responsible and continue to demonstrate its effective oversight of quality services for the children and families for making decisions related to program design and implementation; under the leadership of the Chief Executive Officer who is responsible for leading the organization and its staff in pursuit of the goals and objectives established by the Board in the organization's Strategic Plan and annual operating plan. The following chart represents ALPI's Governance and Agency- Wide Management Organizational Structure.

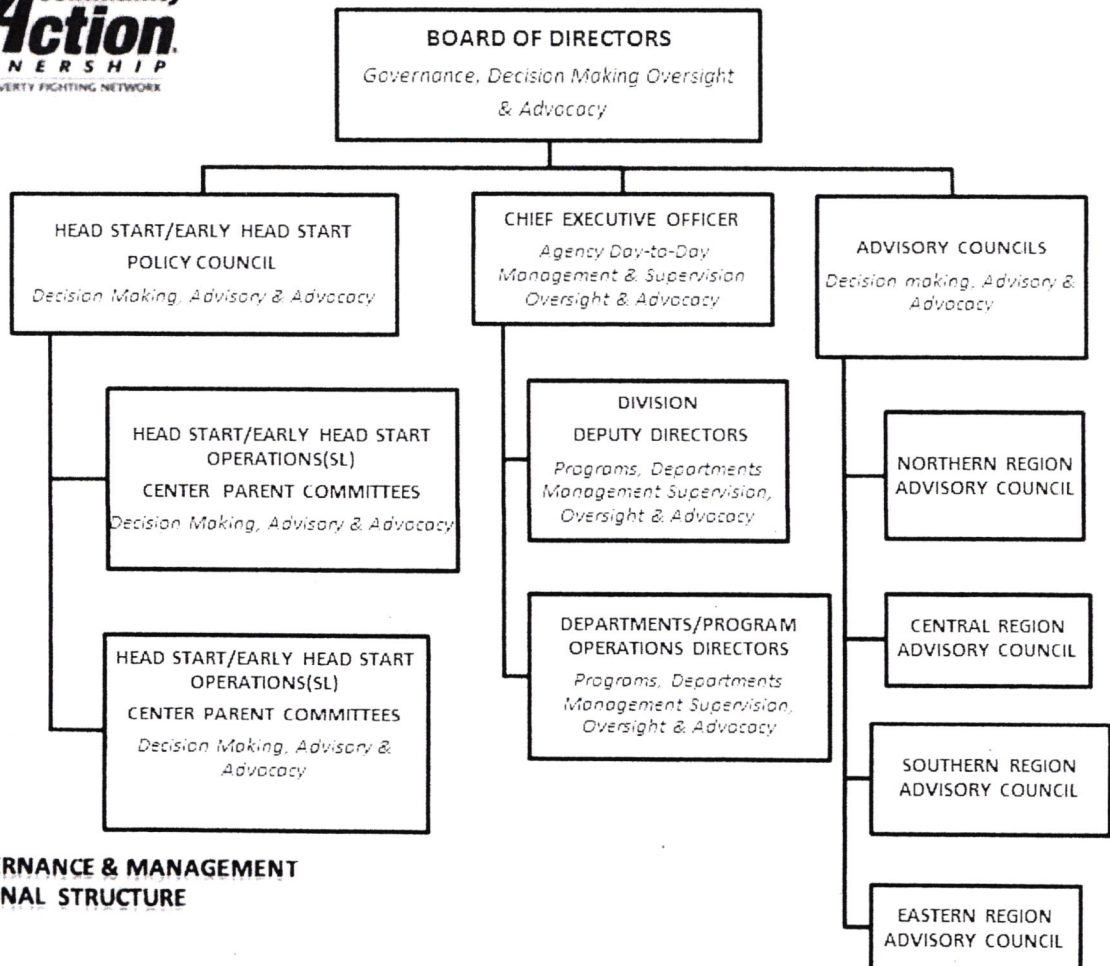
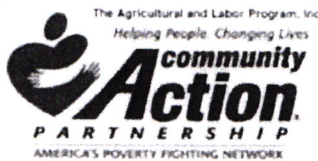


SHARED GOVERNANCE STRUCTURE AT-A-GLANCE

BOARD OF DIRECTORS

The Agricultural and Labor Program, Inc. (ALPI) is a non-profit Organization that is governed by an 18 (voting) member board of Directors. The ALPI Board membership consists of representatives from the Regional Advisory Councils, the Head Start Policy Council and the community at large. ALPI is governed in accordance with its established By-laws, which include the function and purpose of the Councils.

The Board of Directors composition consists of not less than nine (9) or more than twenty-four (24) voting members. The Board membership, in accordance with the CSBG Tripartite Requirement, is equally divisible by three (3) at all times. All Board members eligible to vote will be identified by one of three designations. These are: (1) Elected public officials; (2) Low income community representatives; and (3) Local business leaders/others.



SHARED GOVERNANCE & MANAGEMENT ORGANIZATIONAL STRUCTURE

2-21-2017

SHARED GOVERNANCE STRUCTURE AT-A-GLANCE

HEAD START/EHS POLICY COUNCIL

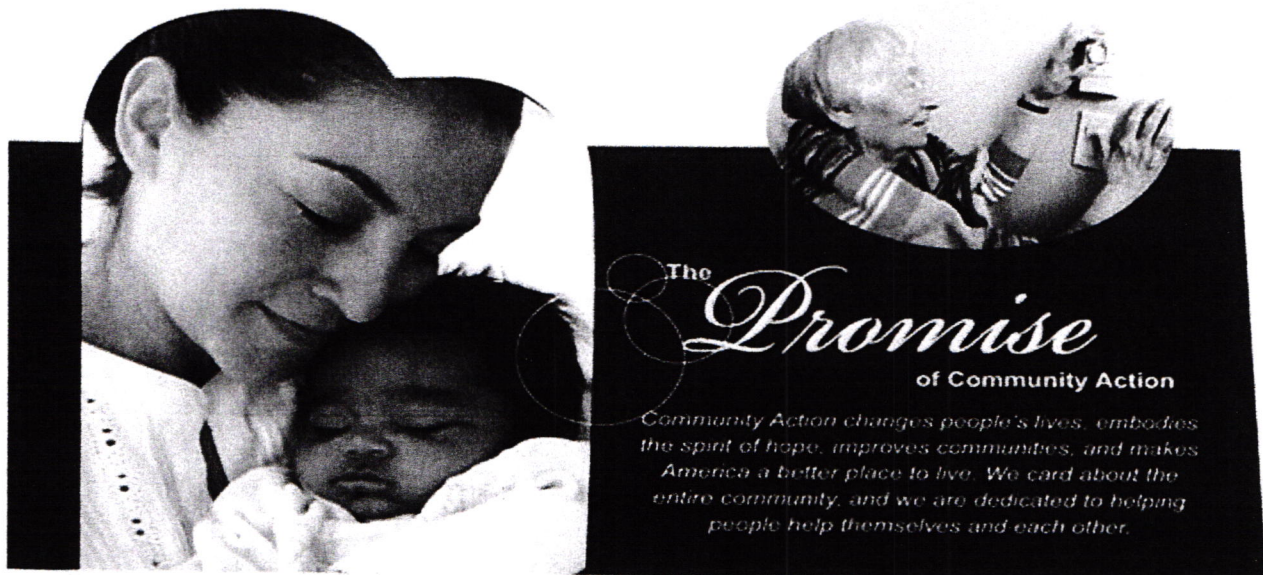
The Head Start/EHS Policy Council is responsible for the direction of the Head Start program under the supervision and oversight of the ALPI Board of Directors, including the Head Start/Early Head Start program design and operation, and long- and short-term planning goals and objectives, taking into account the annual communitywide strategic planning and needs assessment and self-assessment.

The Policy Council composition consists of 78% of parents whose children are currently enrolled in the Early Head Start Program; and 22% of Community Social Services agencies. Contracted Child Care Partners agree deliver parent involvement and community services, which include establishing and maintaining an Early Head Start Parent Committee.

ADVISORY COUNCILS

Advisory Councils to the organization serve important functions, they are vital to the success of the organization. Councils: (1) are good will ambassadors, (2) are knowledgeable about the missions of the organization, (3) support the organization, (4) are vital communication links to the communities that the organization serve, and (5) seek at all times to follow the rules designed by the organization.

Unlike the Policy Council and Policy Committee who are decision makers, the advisory councils do not make decisions for the organization. They advise decision-makers who may use the advice given them in making decisions for the organization.





The Agricultural and Labor Program, Inc.
Program/Services Directory
 (Lake Alfred, Winter Haven, Deland, Avon Park & Ft. Pierce)

800-330-3491
 863-956-3491
 863-956-3492
 863-956-4478

863-956-0349
 863-956-3764
 863-956-1348
 863-956-4938

FAX NUMBERS
 863-956-3357
 863-956-5560

CONFERENCE ROOM
 863-956-0147

ADMINISTRATION & OPERATIONS

Johnson, Deloris – CEO Ext. 206
 Johnson, Marnita Ext. 200
 Buford, Sarah Ext. 234
 Smith, Twila - O & QC Director Ext. 204
 Breakroom Ext. 214
 Conference Room Ext. 216

BUDGET & FINANCE

Gniewek, Dennis - Director Ext. 210
 Davis, Kenneth Ext. 208
 Simone, Lisa Ext. 207
 Rivera, Maribel Ext. 209
 Robinson, Lynda Ext. 211

HUMAN RESOURCES

Samuel, Christine - Director Ext. 202
 Tomberlin, Lisa Ext. 203

CHILD DEVELOPMENT & FAMILY SERVICES

Young, Elizabeth - Div. Deputy Director Ext. 215
 Ferguson, Joyce Ext. 231
 Walker, Hilda Ext. 233
 Armstrong, Bessie Ext. 238

COMMUNITY & ECONOMIC DEVELOPMENT

Miller, Albert - Div. Deputy Director Ext. 212
 Cuker, Shelia Ext. 201

COMMUNITY SERVICES

Burnham, Cheryl - LIHEAP Director Ext. 224
 Leonard, Charlene Ext. 219
 Jardinez, Donna Ext. 221
 Figel, Sandy Ext. 222
 Creech, Michelle Ext. 223
 Diaz, Yartiza Ext. 227
 Cantera, Tim Ext. 232
 Taylor, Grenea (FVDC) 863-299-3173
 Ramirez, Jose (FVDC) 863-299-2995
 Baker, Katrina (FVDC) 863-293-3742
 Leveridge, Stacey (Avon Park) 863-657-2076

ECONOMIC SERVICES

Lee-Yang, Pahoua - CSBG Director Ext. 218
 Mong, Candace Ext. 243
 Stickney, Fred (New Horizon) 863-875-5585
 Armstead, Sheila (New Horizon) 863-268-8205
 Baker, Charles (Highlands Co.) 863-657-2104
 Rodriguez, Agnes (Highlands Co.) 863-657-2104
 Harris, Sophia (Family Fundamentals) 863-686-1221
 Ext. 244

Project Achieve

Deland - Volusia County Office
 386-624-6912
 386-624-6917 (FAX)
Gaytan, Robert
Sanchez, Claudia



Eastern Administrative Office Phone Directory

Betsy Aguilar	10	Myrna Rodriguez	11	Eva Sohl	13
Diana G. Contreras	14	Elizabeth Young	15	Alisa Thornton	16
Amanda Proulx	17	Deloris Johnson	18	Germaine Louis	19
Anna Holmes	20	Donita Brunson	21	Iris Rivera	22
Kevin Singletary	25	Lisandra Concepcion	27	William Hopkins	28
Ana Cendejas	30	CAT Program/Media Center	32	Conference Room B	34/35
Latonya Robinson	36	Conference Room C	38	Auditorium/Cafeteria	29
ALPI Administrative Office Head Start/Early Head Start <i>Myrna Rodriguez, POD</i> 2202 Avenue Q, Fort Pierce, FL 34950 (772)466-2631 Toll Free (800)791-3099 Fax (772)464-3035/(772)466-3886		ALPI Central Office 300 Lynchburg Road Lake Alfred, FL 33850 (863)956-3491 Toll Free: (800)330-3491 Fax (863)956-3357		Frostproof Child Development Center <i>Aletta Stroder, POD</i> 701 Hopson Road Frostproof, FL 33843 (863)635-3396 Fax (863)635-2749	
ALPI Computer Assisted Tutorial Program <i>Kevin Singletary, Program Coordinator</i> 2202 Avenue Q, Fort Pierce, FL 34950 (772)466-2631 Fax (772)466-3886		Loving Care <i>Mary Logsdon, Owner</i> 1207 S. 28 th Street Fort Pierce, FL 34947 (772)464-1518 Fax (772)465-0651		Learning Tree <i>Elsie Salter, Owner</i> 2808 Avenue D Fort Pierce, FL 34947 (772)464-2988 Fax (772)464-0155	
ALPI Child Development and Family Services Center 198 N.W. Marion Avenue Port St. Lucie, FL 34983		CDSM II - Crystal Dames CDSM I - Glenda Johnson AA - Lacey Bissell FSW - Juanita Deloera FSW - Amy Nunez		772-879-4944 772-879-4272 772-879-4377 772-879-4966 Fax 772-343-7915 772-343-7916 772-343-7918 Fax	
ALPI Francina Duval Head Start Center 1035 South 27 th Circle Fort Pierce, FL 34950		CDSM - Temika Johnson AA - Latasha Blackmon FSW - Margie Houston		772-461-0398 772-461-0891 772-461-1024 Fax	
ALPI Garden Terrace Head Start Center 1110 North 32 nd Street Fort Pierce, FL 34950		CDSM - Sandra Monroe AA - Cynthia Thomas FSW - Jewel Whitehead FSW - Jennifer Hall		772-468-0300 772-468-0210 772-468-3737 Fax	
ALPI George W. Truitt Family Services Center 1814 North 13 th Street Fort Pierce, FL 34950		CDSM - Donna Hammond AA - Janna Gates FSW - Kelcey Williams		772-464-4452 772-465-3121 772-465-1045 Fax	
ALPI Lincoln Park Head Start Center 1400 Avenue M Fort Pierce, FL 34950		CDSM I - Charlene Smith AA - Edelia Rodriguez FSW - Karen Foxx FSW - Mario Camacho		772-464-6061 772-464-7396 772-464-5349 Fax	
ALPI Queen Townsend Head Start Center II 2202 Avenue Q Fort Pierce, FL 34950		CDSM II - Ellen Bradley CDSM I - Mary Brunson CDSM I - Maria Plaza AA - Sharee McBride-Coke FSW - Ana Wilson FSW - Cindy Thomas FSW - Yolanda Cunningham FSW - Karla Toole		772-429-8889 772-429-2446 772-464-7354 772-468-0904 772-464-1341 Fax	



Prayer for Acceptance of Change

Change has come unbidden, and at times, unwelcome, there are many challenges to be faced and overcome, change can be daunting and scary, but it has come, ready or not, change is here, and must be accepted.

May I be equal to the task ahead of me,
ready to renew myself, ready to take on the new,
anxious to let go of old ideas that no longer fit,
moving with confidence, into the future, my future.

Make me strong enough to triumph,
flexible enough to grow and change as needed,
optimistic enough to see the new opportunities
as I move into the changing landscape of my life.

I accept and welcome the change that has come,
I am ready to embrace change and move swiftly forward,
I am ready.