

DEFINITION OF A (PEEC)
LEGISLATION

Provision of a (PEEC) is required for all buildings which are used for the purpose of...
 (The text is partially illegible due to the image's orientation.)

GENERAL NOTES:

1. ALL OCCUPANCY CLASSIFICATION ARE TO BE CLASSIFIED AS PER THE P.E.C.
2. ALL OCCUPANCY CLASSIFICATION ARE TO BE CLASSIFIED AS PER THE P.E.C.
3. ALL AREAS ARE COVERED BY AUTOMATIC FIRE ALARMS.
4. ALL ROOMS AND AREAS ARE COVERED BY SMOKE DETECTORS.
5. ALL ENTRANCES ARE FITTED WITH FIRE DOORS AND HANDSALES.

OCCUPANCY CALC'S

1. OCCUPANCY CLASSIFICATION (PEEC)

ONE OCCUPANT PER 315 SF (INT)

GROSS AREA	3000 S.F.
LESS:	
OFFICES	-100
TOILETS	-20
REST ROOMS	-10
ISOLATION ROOM	-60
SPEECH ROOM	-60
BREAK ROOM	-60
ASHES	-50
NET AREA	2700 S.F.

CALCULATION: 2700 / 315 = 8.57 OCCUPANTS

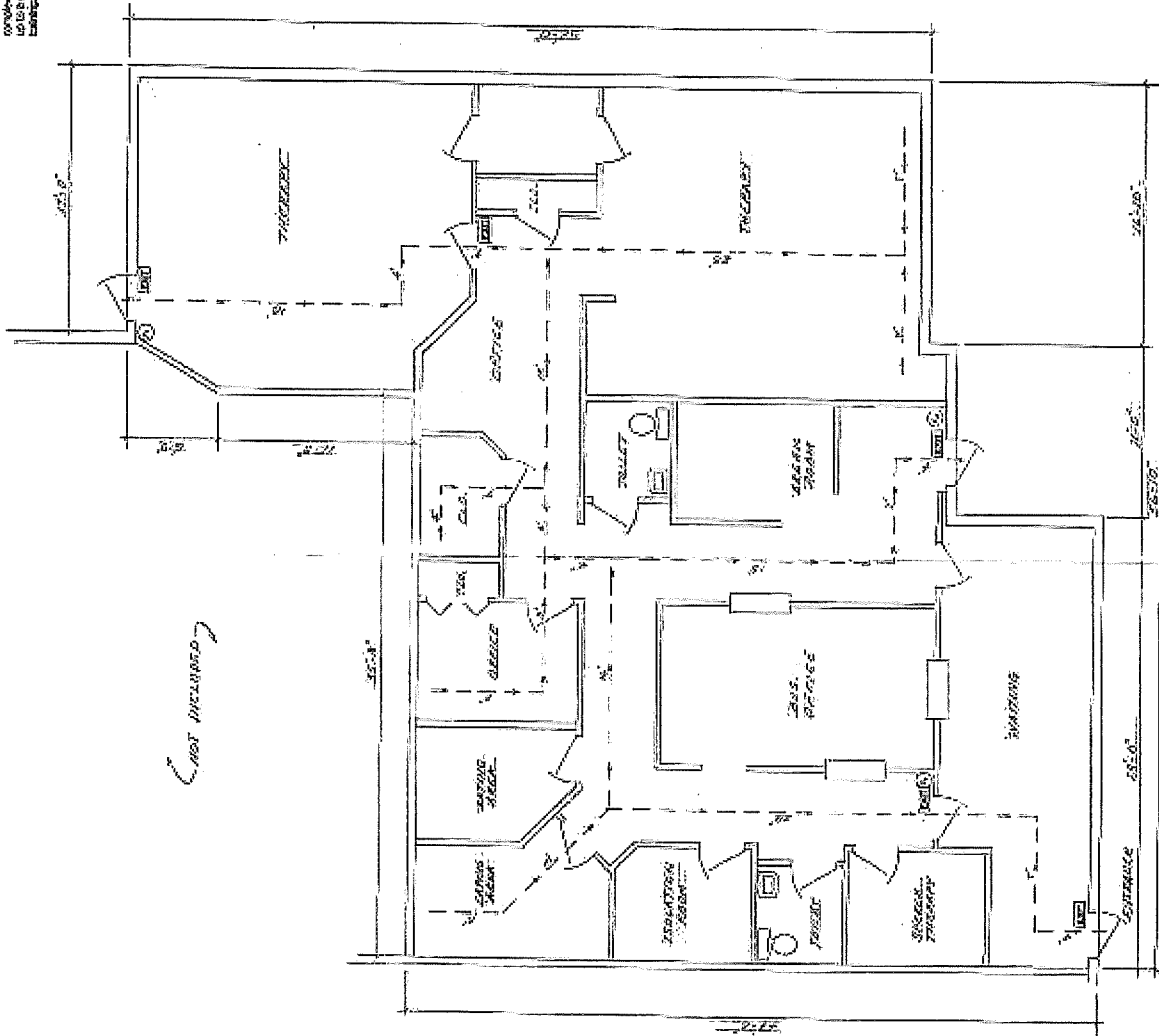
LIFE SAFETY PLAN

The building has an occupancy load of 77 occupants with a total of 21 exits with a 75' in width, this maximum travel to egress the exits is less than 30' with 80' stairs within.

Each exit is equipped with an approved exit sign and emergency lights with battery backup power at all times in case of power failure.

Factors that enhance the Life Safety Plan are:

- All exits are of proper level.
- Exits are clearly marked.
- No obstructed aisles or corridors.
- Corridor paths allow for non-slip surfaces.
- All rooms and areas have emergency lights.
- Fire extinguishers are located at 10' intervals.



FLOOR PLAN (LINE 2)
 SCALE 3/8" = 1'-0"



Richard A. Jemison
 P.E. No. 2414
 P.O. Box 2414
 Ft. Pierce, FL 34941
 (888) 312-5833

BENCHMARK ENGINEERING
 OF THE STATE OF FLORIDA
 PROFESSIONAL ENGINEERS
 1000 W. US HWY 1
 FT. PIERCE, FL 34941

SCALE	1/8" = 1'-0"
DATE	05/20/11
PROJECT	PEEC SAFETY PLAN
SHEET	1 OF 1

DEFINITION OF A (PPEC):
LICENSED BY AHCA

Prescribed Pediatric Extended Care (PPEC) centers allow Medicaid eligible children from birth through age 20 with medically complex conditions to receive continual medical care in a non-residential setting. When approved, children can attend a PPEC up to a maximum of 12 hours per day while receiving nursing services, personal care, developmental therapies, and caregiver training.

GENERAL NOTES:

1. THE TENANT MUST SUBMIT A LIFE SAFETY PLAN TO THE CITY.
2. THE OCCUPANCY CLASSIFICATION FOR THIS BUSINESS ACCORDING TO THE 2011 FBC (7TH EDITION) IS L4.
3. ALL AREAS ARE COVERED BY AUTOMATIC FIRE SPRINKLERS.
4. ALL ROOMS AND AREAS ARE COVERED BY EMERGENCY LIGHTS.
5. ILLUMINATED EXIT LIGHTS MARK TRAVEL PATHS TO EXIT.
6. ALL EXIT DOORS ARE FITTED WITH CRASH BAR HARDWARE.

OCCUPANCY CALC'S:

L4 OCCUPANCY CLASSIFICATION (PPEC)

ONE OCCUPANT PER 35 S.F. (net)

GROSS AREA=	OFFICES	1200 S.F.
LESS:	CHANGE RMS	-70 "
	BREAK RM	-14 "
	TOILETS	-72 "
		<u>-42 "</u>
NET AREA =		914 S.F.

CALCULATION: 914 / 35 = 26 OCCUPANTS

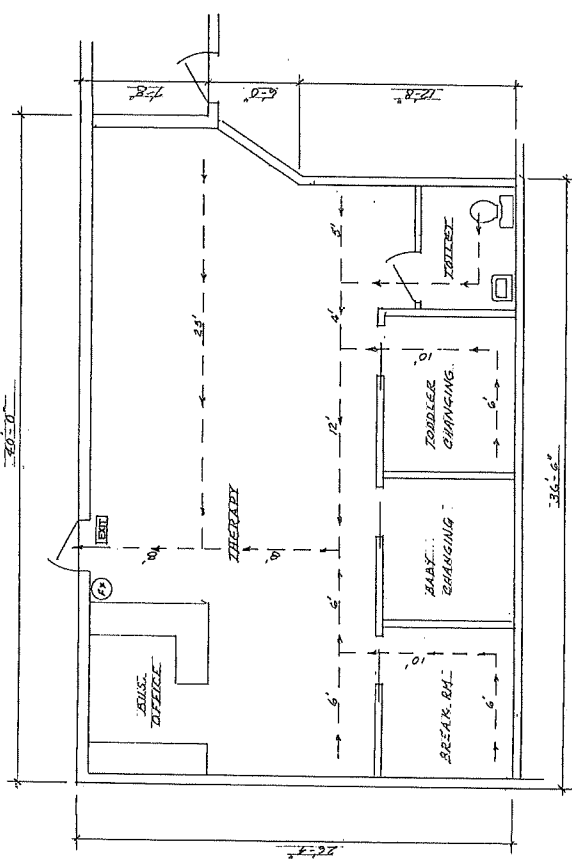
LIFE SAFETY PLAN

The building has an occupancy load of 31 occupants with (1) marked exit, 36" in width. The maximum travel to the exit is less than 75' with over 60" aisle width.

The exit is illuminated with an approved exit sign and emergency lights with battery backup cover all areas in case of power failure.

Factors that enhance the Life Safety Plan are:

- All exits are at ground level.
- Common exit path of over 60" aisle width.
- No dead-end aisles or corridors.
- Common path aisles are non-slip surface.
- All rooms and areas have emergency lights.
- Less than 10 occupants under 2.5 years old.
- Fire extinguisher is located at the exit.



FLOOR PLAN (UNIT 8)
SCALE 1/8"

Design by:
RICHARD A. JEMISON
P.O. Box 5616
Ft. Pierce, FL 34954
(772) 215-5623



BENCHMARK ENGINEERING
OF THE TREASURE COAST
400 DELAWARE AVE.
FT. PIERCE, FL 34909
(772) 728-0079

SEAL	LIFE SAFETY PLAN	SHEET
RICHARD A. JEMISON P.E. #12579	RESPIRATORY CARE PROVIDERS 2401 FRIST BLVD. (UNIT 8) FT. PIERCE, FLORIDA	1 OF 1

06/22/18