

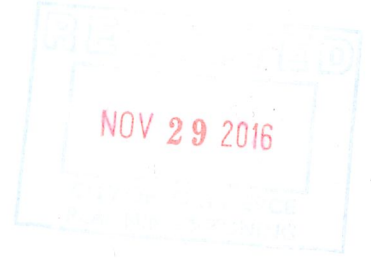


THE SUNRISE CITY

**FORT PIERCE**  
CITY CLERK'S OFFICE  
*Florida*

November 29, 2016

Richard Wohlfarth, PE - Associate Director  
IBI Group (Florida) Inc.  
2300 Maitland Center Parkway-Suite 101  
Maitland FL 32751-7410



Dear Mr. Wohlfarth:

At their meeting on Monday, November 21, 2016, the City Commission of the City of Fort Pierce, Florida, approved your request for a Planned Development (PD) Plan generally located at 1801 Nebraska Avenue conditioned on the incorporation of the agreement between the applicant and adjacent properties' HOA being reduced to writing and incorporated into the development order.

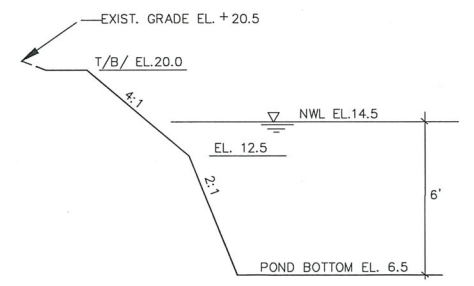
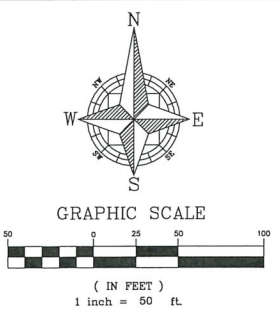
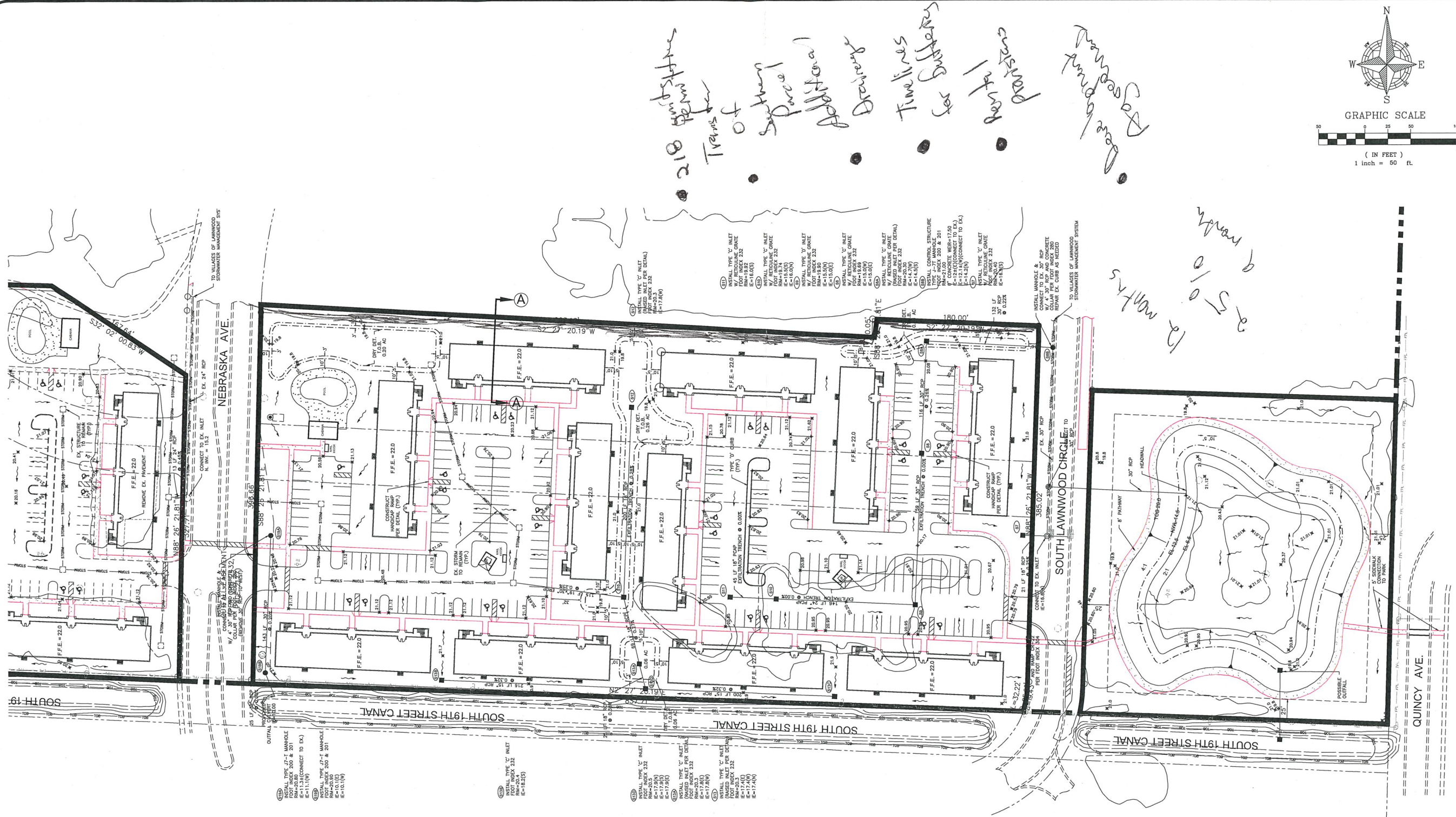
If you have any questions, please feel free to contact me or the City Planning Department.

Very truly yours,

Linda W. Cox  
City Clerk

cc: Rebecca Grohall, Planning Manager

Mayfair At Lawnwood Reph LLC  
780 NW 42nd Ave Ste 300  
Miami, FL 33126



TYPICAL POND SECTION  
NOTE: SOD SIDESLOPES TO EL. 14.5

945 LF - 8' PATHWAY  
2,080 SY - POND BANK SOD  
5,815 SY - PARK SOD  
  
AREA @ T.O.B. = 1.27 AC  
AREA @ N.W.L. = 0.84 AC

INSTALL TYPE 'C' INLET  
W/ REINFORCE GRADE  
FOOT INDEX 200 & 201  
E=11.1(W)  
E=10.1(E)  
E=10.1(W)

INSTALL TYPE 'C' INLET  
W/ REINFORCE GRADE  
FOOT INDEX 200 & 201  
E=17.8(S)  
E=17.8(W)  
E=17.8(N)

INSTALL TYPE 'C' INLET  
W/ REINFORCE GRADE  
FOOT INDEX 200 & 201  
E=17.8(S)  
E=17.8(W)  
E=17.8(N)

INSTALL TYPE 'C' INLET  
W/ REINFORCE GRADE  
FOOT INDEX 200 & 201  
E=15.0(S)  
E=15.0(W)  
E=15.0(N)

INSTALL TYPE 'C' INLET  
W/ REINFORCE GRADE  
FOOT INDEX 200 & 201  
E=14.5(S)  
E=14.5(W)  
E=14.5(N)

INSTALL TYPE 'C' INLET  
W/ REINFORCE GRADE  
FOOT INDEX 200 & 201  
E=13.0(S)  
E=13.0(W)  
E=13.0(N)

DRAWN: BW		SCALE: 1" = 50'	
DESIGNED:		PROJECT: 38890	
CHECKED:		SHEET: PGD-ALT	
DATE: 11/16/2016		DATE: 11/16/2016	
MAYFAIR FORT PIERCE, FLORIDA			
IBI GROUP (FLORIDA) INC.			
ENGINEERS	PLANNERS	DATE	DESCRIPTION
LANDSCAPE ARCHITECTS	ENVIRONMENTAL CONSULTANTS		
3200 MITCHELL CENTER PARKWAY SUITE 101 MAITLAND, FLORIDA 32751 (407) 860-2100	2300 PARK CENTRAL BLVD. N. SUITE 100 POMPANO BEACH, FLORIDA 33064 (800) 274-2200		
ORLANDO	POMPANO BEACH		

IBI GROUP  
FLORIDA ENGINEERING  
BUSINESS NO. 2966  
NOT FOR CONSTRUCTION  
11/16/16