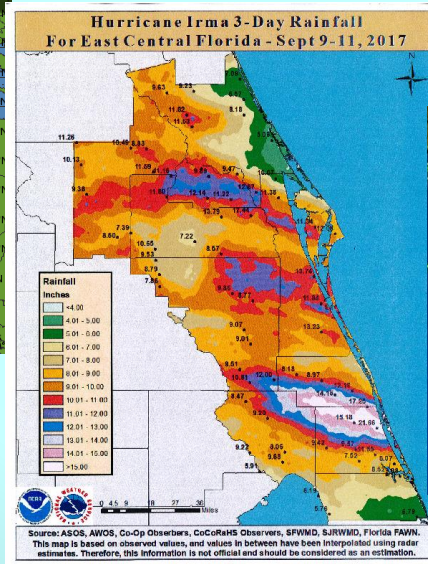
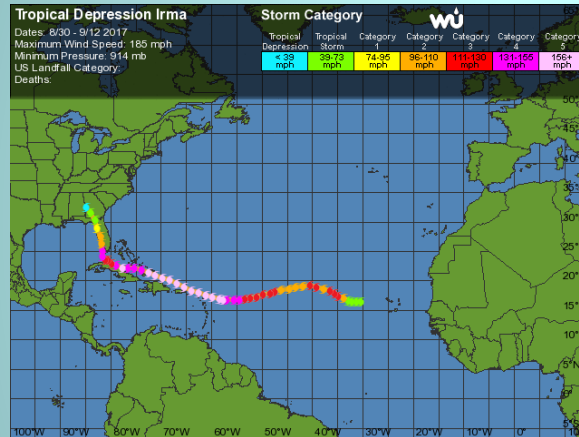


Old Dixie Highway Bridge over Taylor Creek



**CITY OF FORT PIERCE – CITY COMMISSION
MEETING DECEMBER 17, 2018**

Old Dixie Highway Bridge over Taylor Creek

- Bridge Built 1962
- Estimated Cost to Repair is \$800,000
- Expected Functional Life for Bridges of this Generation is Typically 50 years



Closed to the Public on January 25, 2018

Original Traffic Flow Vs Detour Route

- Prior to the closure: Old Dixie Highway over Taylor Creek is 0.60 miles from U.S. Highway 1 to A1A
- After the closure: Old Dixie Highway is 0.80 miles to Old Dixie Highway/A1A intersection



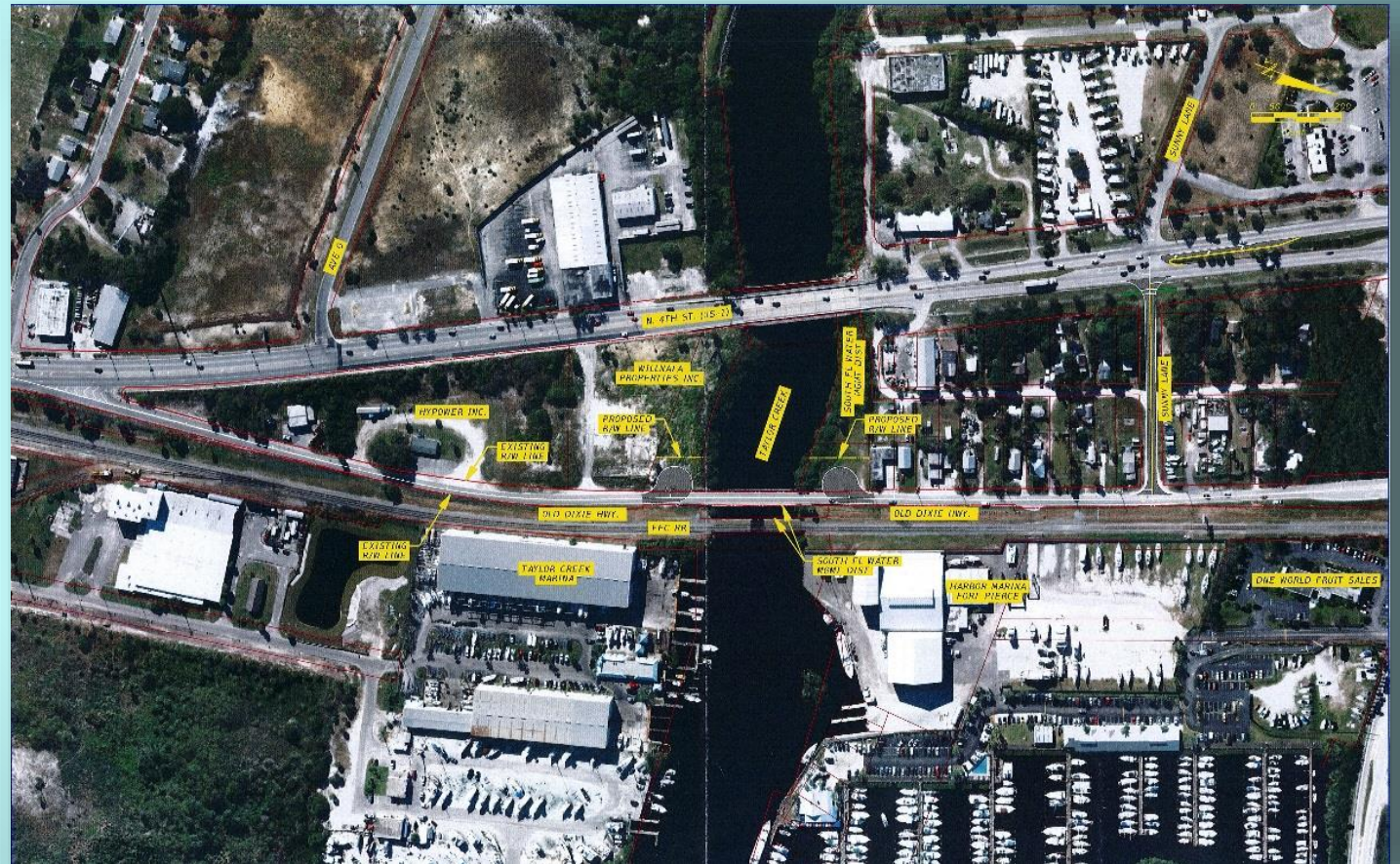


Review of Bridge Options

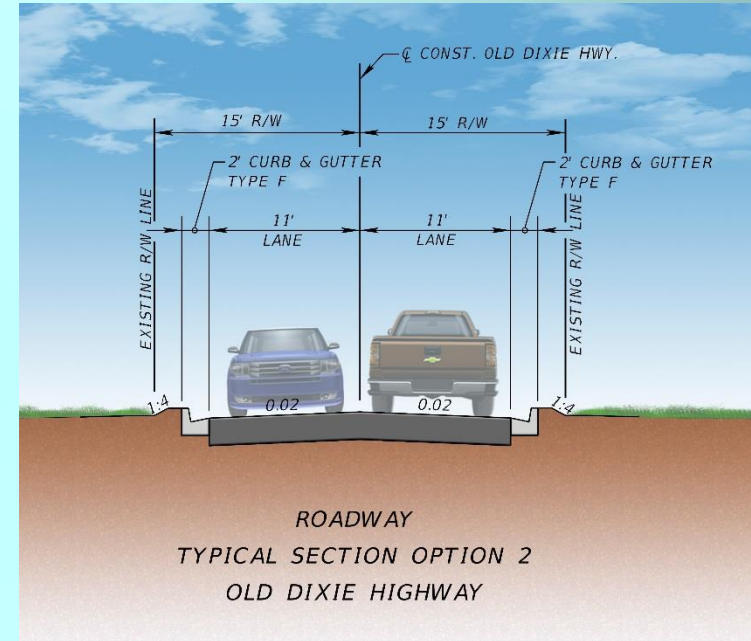
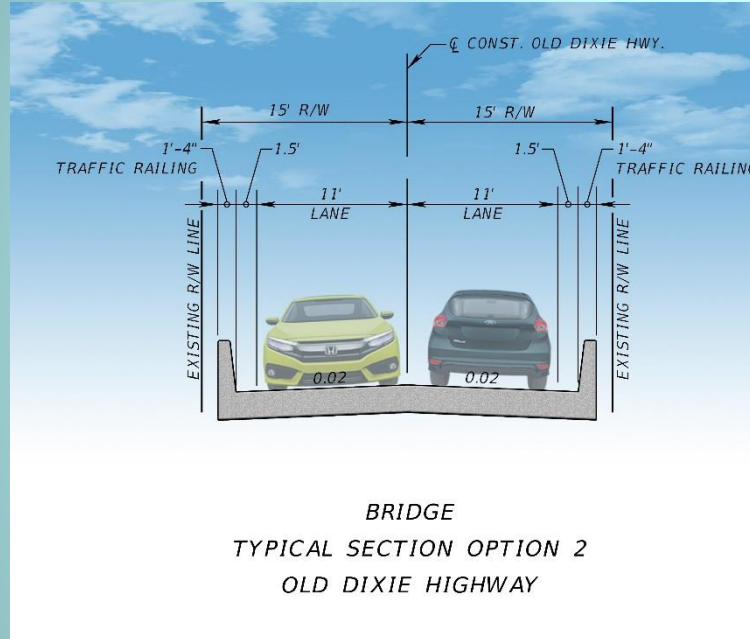
- **Option 1 – Removal of the Existing Bridge**
- **Option 2 – Replace Bridge within Existing Right-of-Way**
- **Option 3 – One-Way Bridge with East Coast Greenway Trail**
- **Option 4 – Two-Way Bridge with Multi-Use Path**

OPTION 1 – Removal of the Existing Bridge

- Remove Existing Bridge
 - Utility Relocation Required
- Construct Cul-de-Sacs at North and South Approaches
- Right-of-Way Acquisition Required for Cul-de-Sacs (approximately 0.50 acres)
- Estimated Cost \$1,030,000 (includes \$200,000 for utility relocation).

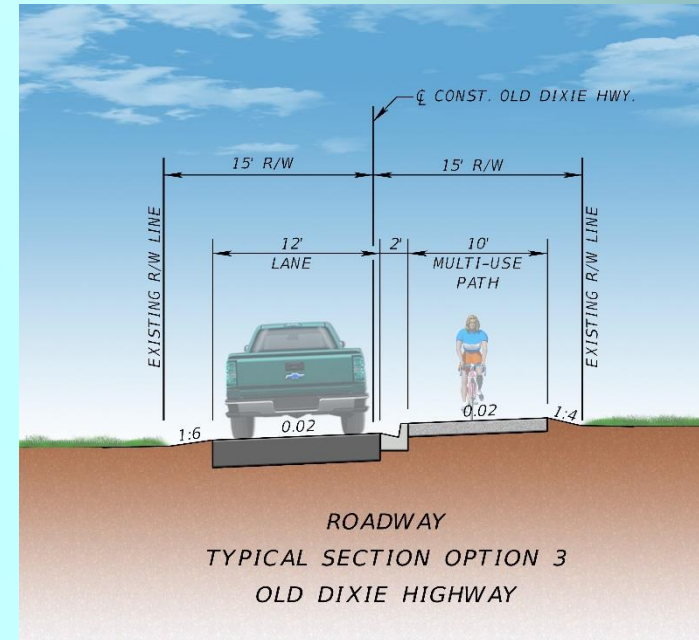
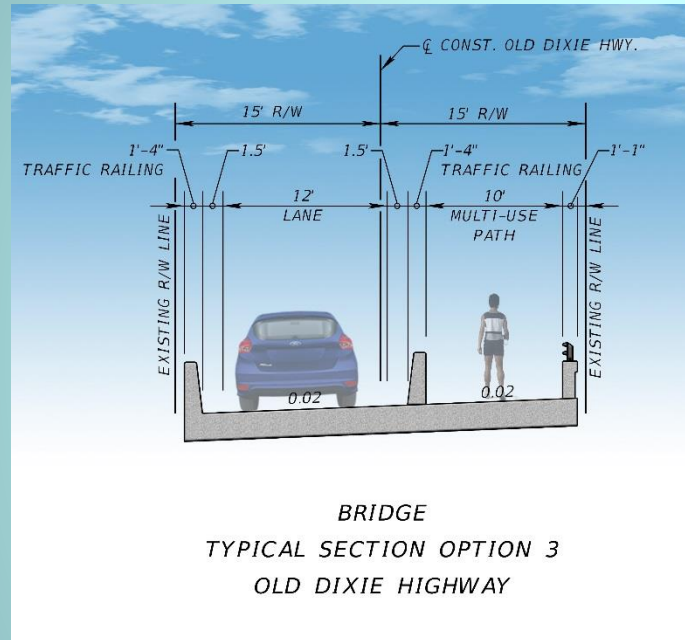


OPTION 2 – REPLACE BRIDGE WITHIN EXISTING RIGHT-OF-WAY



- “Minimum of the Minimum”
- Restores Existing Conditions
- Minimal Right-of-Way Acquisition Required (approximately 0.25 acres)
- Does Not Eliminate the Blind Intersection at Old Dixie Highway and U.S. Highway 1
- Estimated Cost \$2,500,000 (includes \$200,000 for utility relocations)

OPTION 3 – ONE-WAY BRIDGE WITH EAST COAST GREENWAY TRAIL



- Establishes the East Coast Greenway on the Bridge and Old Dixie Highway
- Minimal Right-of-Way Acquisition Required (approximately 0.25 acres)
- Eliminates the Blind Intersection at Old Dixie Highway and U.S. Highway 1
- Estimated Cost \$2,600,000

EAST COAST GREENWAY (ECG) TRAIL

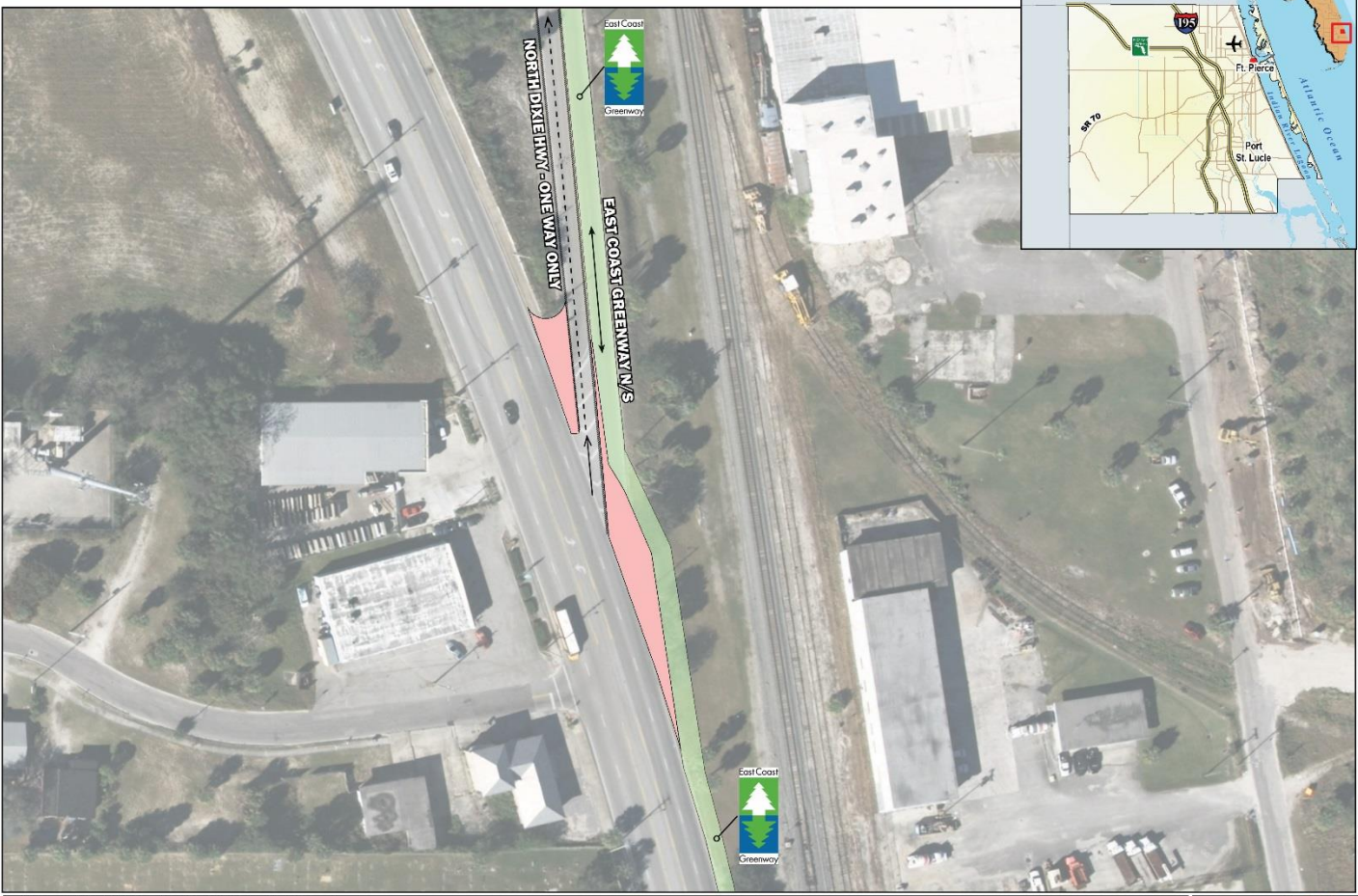


- 3,000-Mile Greenway Trail
- 15 States, 450 Cities
- Maine to Key West
- 10-12' Wide - Paved Trail Surface
- Alternative Transit Benefits
- Appeals to Many Generations
- Brings Local Tourism
- Spurs Economic Development & Gentrification
- Provides Health Benefits
- **Every \$1 Spent on GWTs = \$3 Savings in Healthcare Costs**

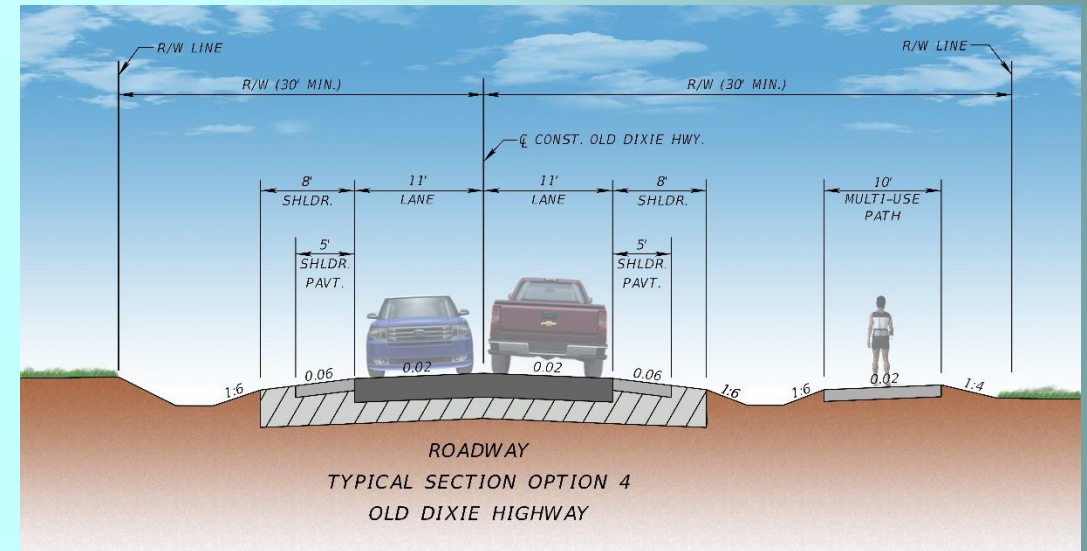
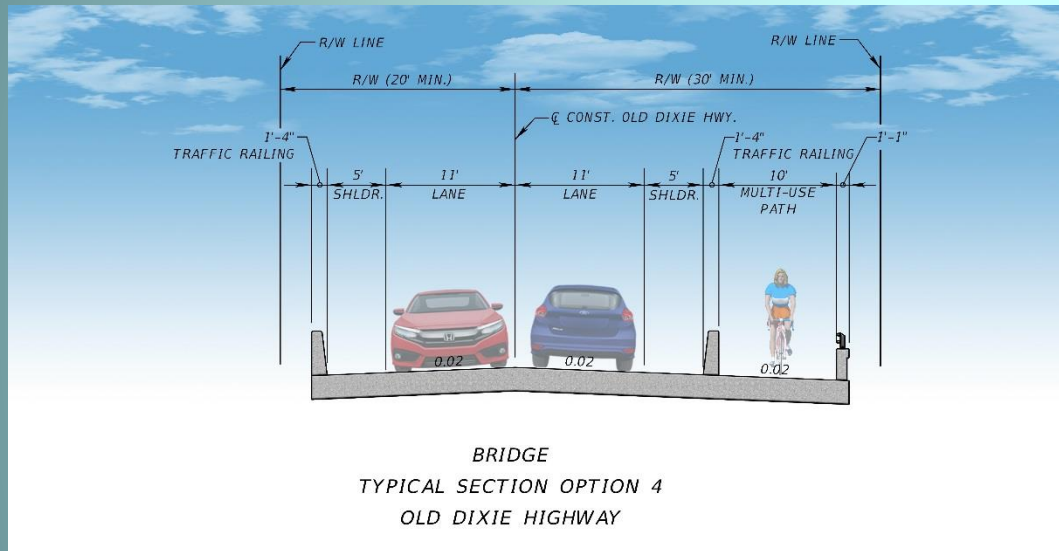
EAST COAST GREENWAY & DIXIE HIGHWAY



ECG_Dixie_US1_Connection



OPTION 4 – TWO-LANE BRIDGE WITH MULTI-USE PATH



- Brings Alignment into Current Standards
- Maintains Two-Way Traffic
- Significant Right-of-Way Acquisition Required (approximately 0.77 acres)
- Does Not Eliminate the Blind Intersection at Old Dixie Highway and U.S. Highway 1
- Estimated Cost \$4,600,000



FUNDING OPTIONS

- **Capital Improvement Funds**
- **Half Cent Sales Tax Referendum**
- **Highway Bridge Replacement and Rehabilitation Program (Federal HBRRP)**

Option 1 – Removal of the Existing Bridge	\$1,030,000
Option 2 – Replace Bridge within Existing Right-Of-Way	\$2,500,000
Option 3* – One-Way Bridge with East Coast Greenway Trail	\$2,600,000
Option 4* – Two-Lane Bridge with Multi-Use Path	\$4,600,000

(*note \$300,000 Available from FDOT for Design of ECG/Multi-Use Components)



What's Next ...

- **Engineering Recommends Option 3**
- **Board Recommendation**
 - **Request for Proposal for Design**
 - **Apply for Federal/ State Construction Funding**

