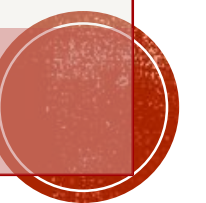


Discovery Church

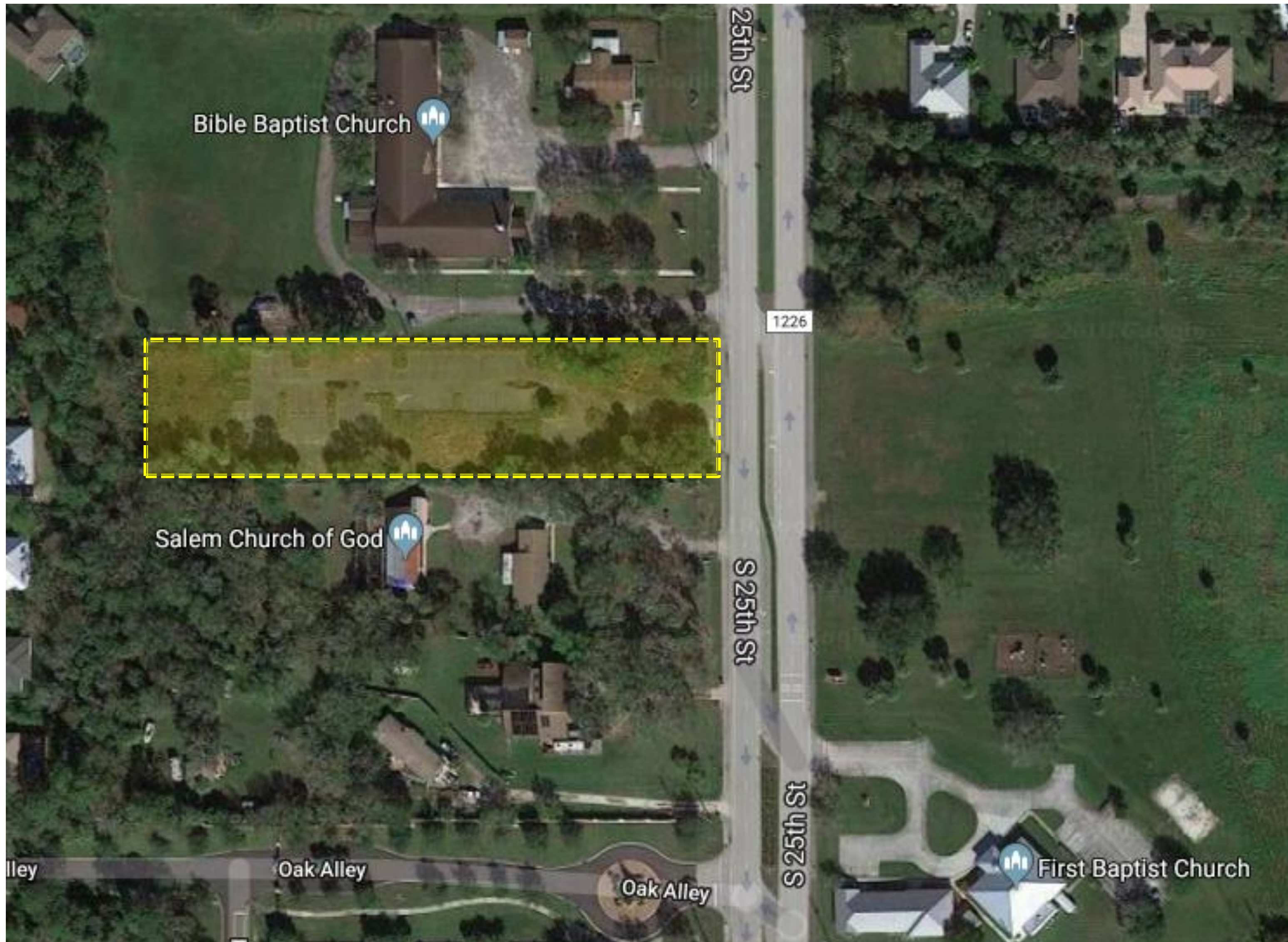
4403 S. 25th Street



City of Fort Pierce
City Commission – 1.22.19



4403 SOUTH 25TH STREET



Surrounding Uses:

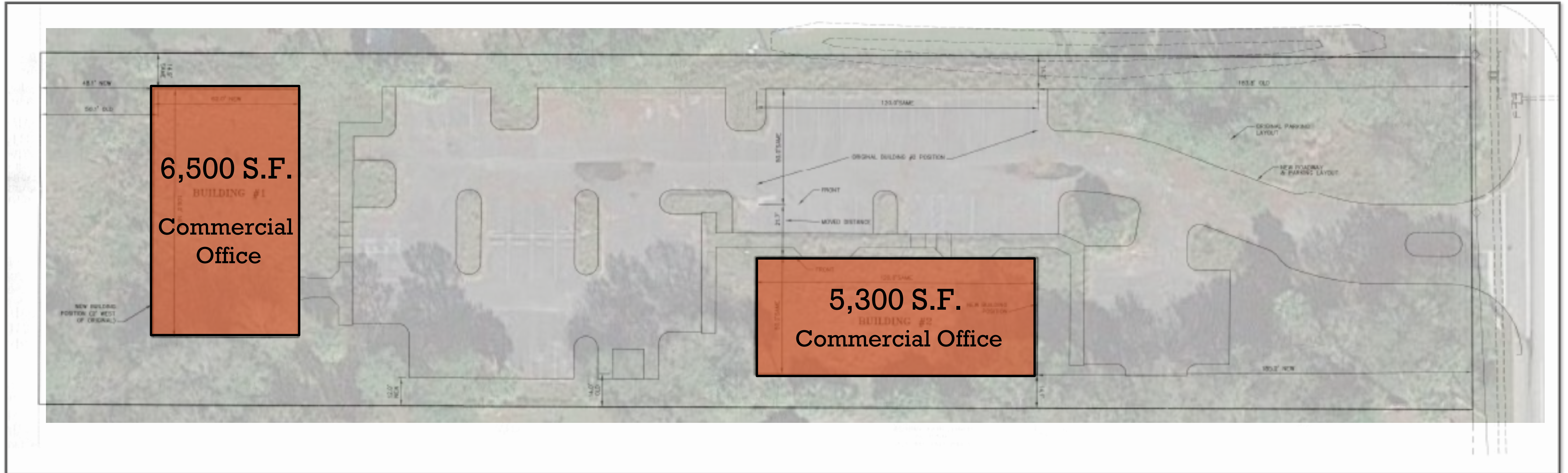
- North: Church [R-1]
- East: E-2, RF (SLC)
- South: Church [RF (SLC)]
- West: PD

Current Site Conditions:

- Completed Stormwater, Parking, & Utilities
- Two-Way Entry
- Trees Have Been Preserved
- Both North & South Neighbors Are Churches

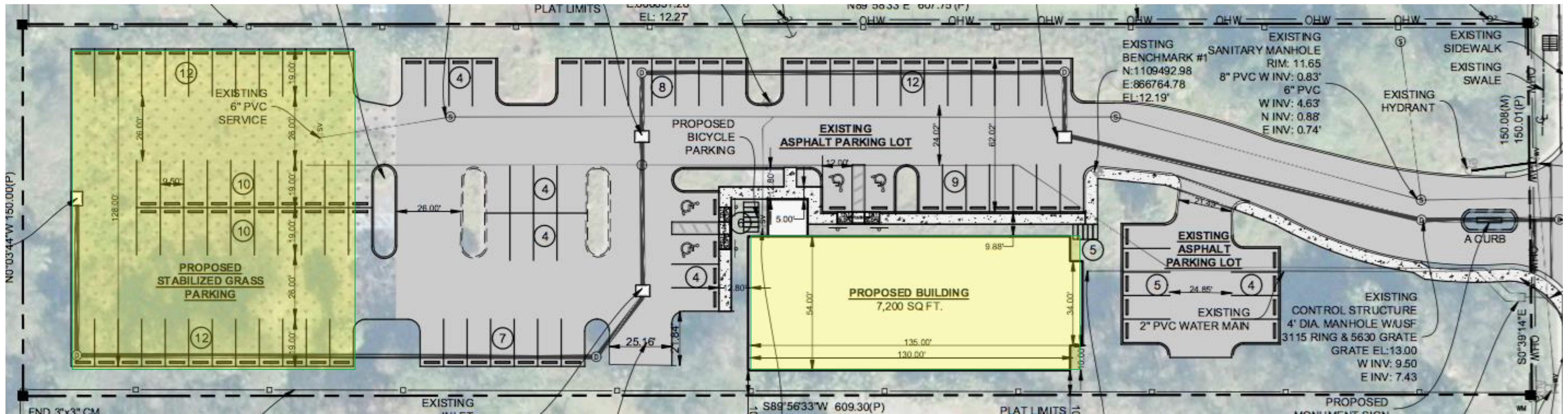


PREVIOUSLY APPROVED SITE PLAN



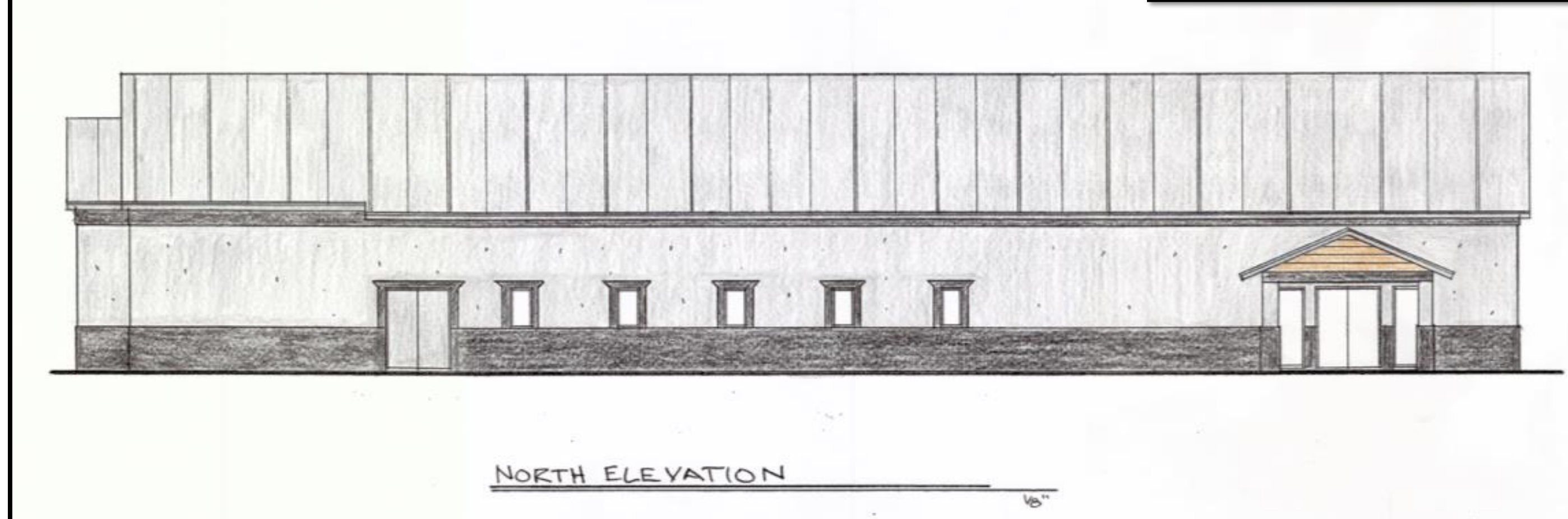
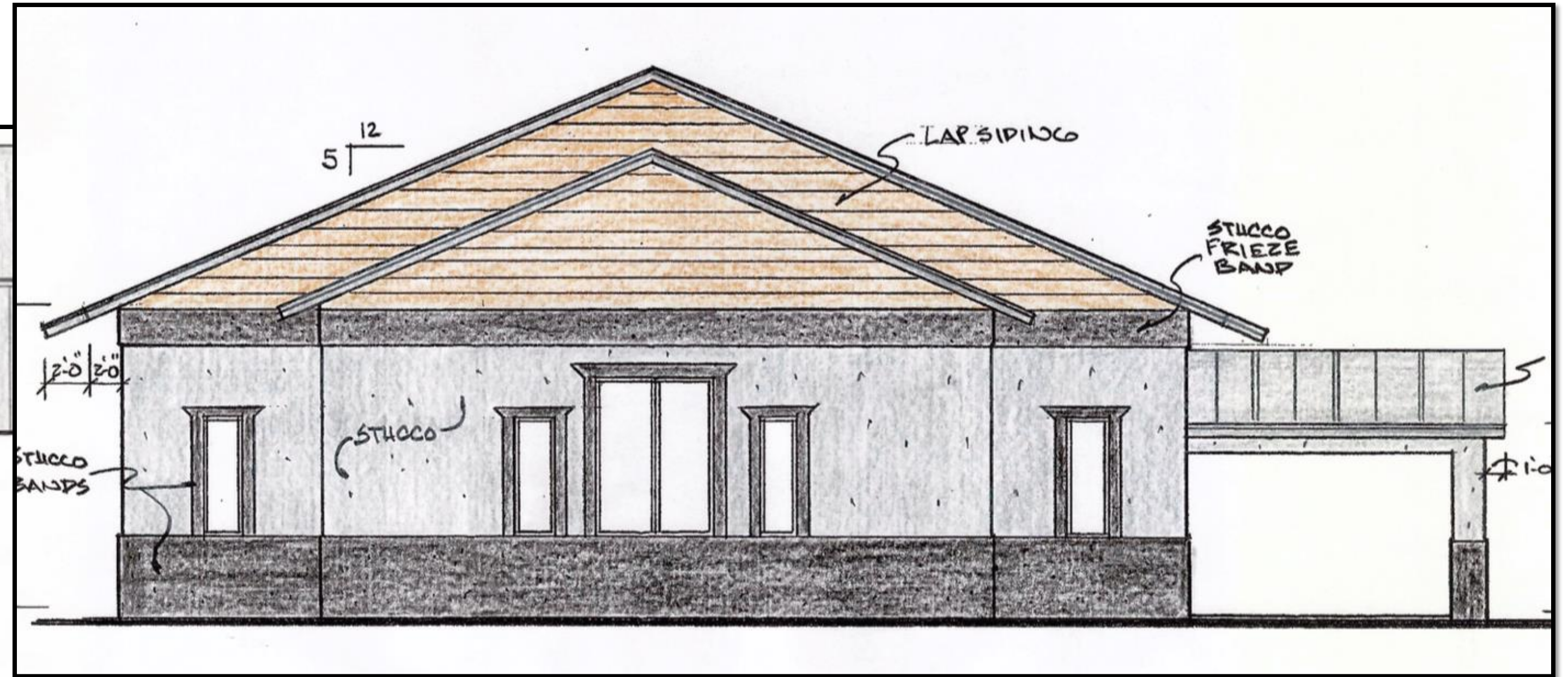
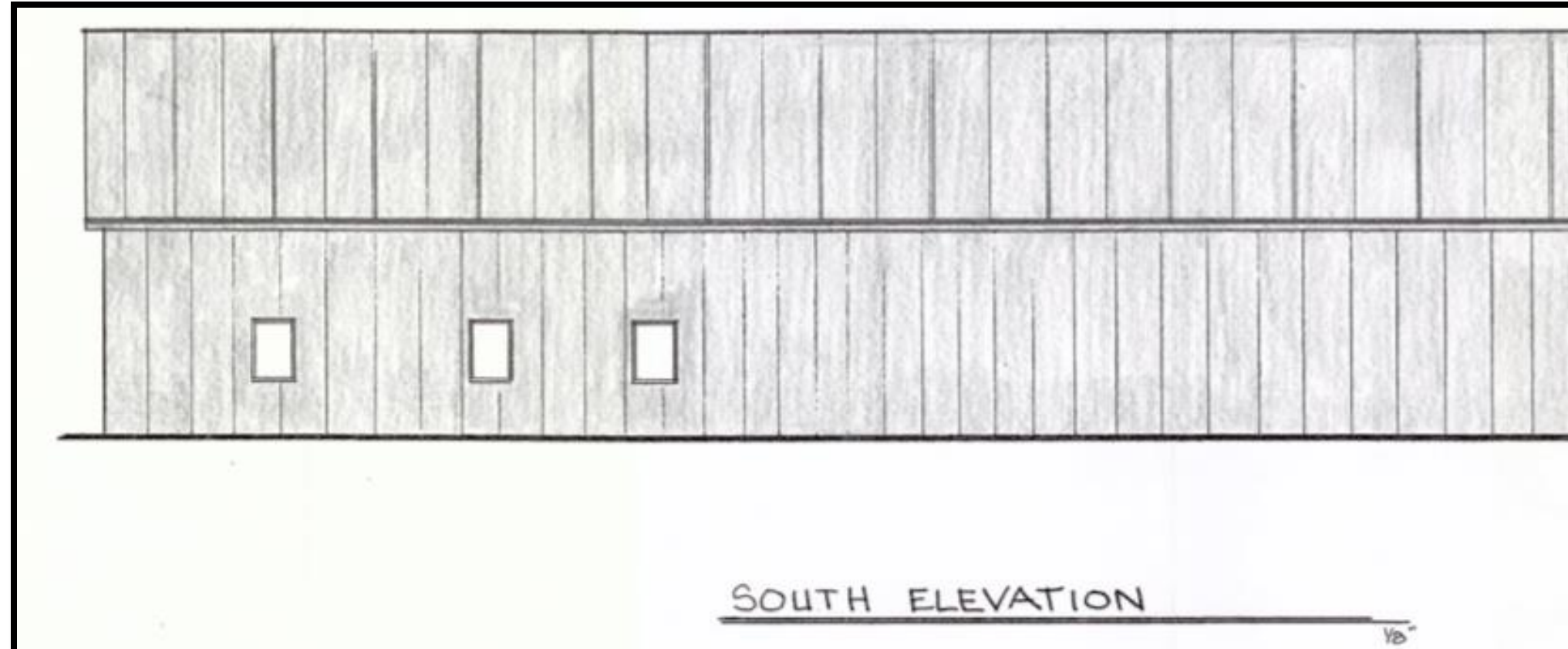
- Previously Approved For 2 Commercial Office Buildings (11,800 S.F. Total)
- These Two Commercial Office Buildings Were Never Built
- As Of Today, The Lot Is an Unused Parking Lot

PROPOSED SITE PLAN



- One Building is Proposed For The Site, a 7,200 S.F. Church
- The Rear Building Pad Will Be Utilized For Stabilized Grass Parking
- City Staff's Conditions of Approval Are Being Incorporated

PROPOSED ELEVATIONS



PROPERTY BUFFERS



PROPERTY BUFFERS



North



South

RECOMMENDATION

On December 11, 2018, we received an unanimous recommendation by the PNZ Board to the City Commission.



Discovery Church

4403 S. 25th Street

