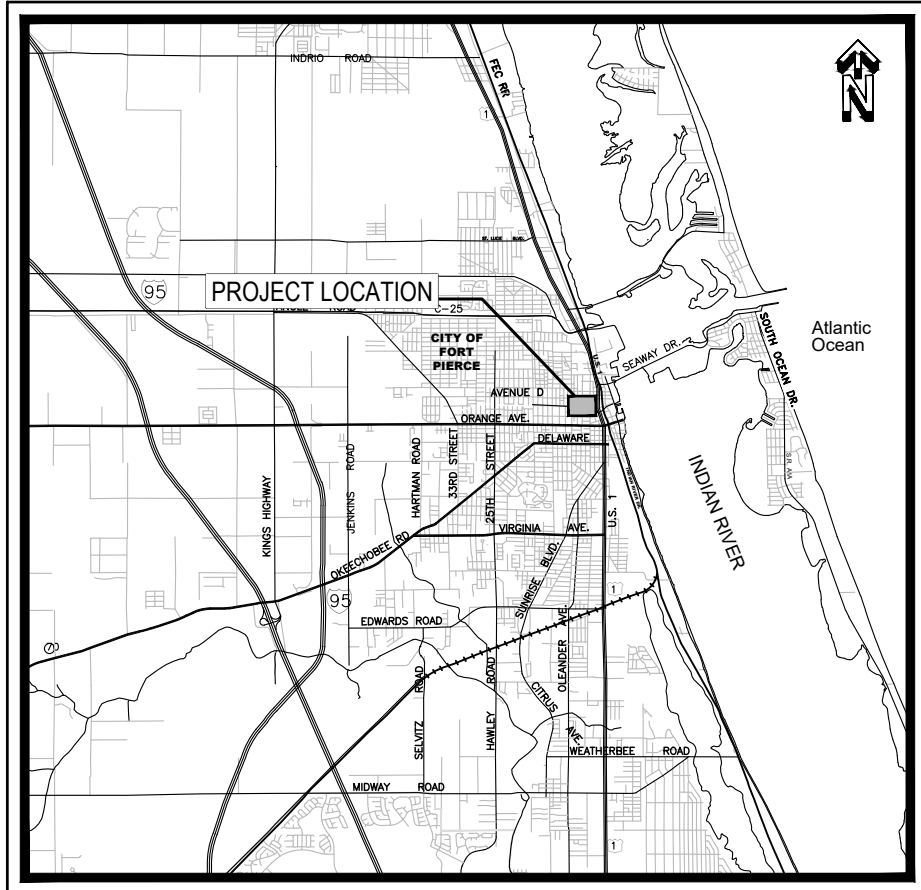


CITY OF FORT PIERCE

SOUTH 7TH STREET IMPROVEMENTS (10TH STREET TO WENDELL ROAD)



PROJECT LOCATION MAP



SITE LOCATION MAP

DEPARTMENT OF ENGINEERING

INDEX	
DESCRIPTION	SHEET NUMBER
COVER SHEET	1 OF 7
GENERAL NOTES	2 OF 7
7TH STREET ROADWAY PLAN	3 OF 7
7TH STREET ROADWAY PLAN	4 OF 7
7TH STREET ROADWAY PLAN	5 OF 7
DETAILS	6 OF 7
DETAILS	7 OF 7
FPUA SANITARY SEWER REPLACEMENT PLANS	1 - 4

SOUTH 7TH STREET IMPROVEMENTS
 (10TH STREET TO WENDELL ROAD)
COVER SHEET



CITY OF FORT PIERCE
 DEPARTMENT OF ENGINEERING
 100 NORTH U.S. 1 P.O. BOX 1480
 FORT PIERCE FLORIDA, 34954

DATE: MAY 2017	SCALE: N.T.S.
SURVEY BY: C.BLACKWELDER	DRAWN BY: D.SUMNER
DESIGNED BY: T.TELLE	APPROVED BY: J.ANDREWS

No.	DATE	BY	REVISIONS

PROJECT No. SOUTH 7TH	SHEET No. 1 OF 7
DRAWING No.	

GENERAL NOTES

1. Bidders, before submitting Bid, must examine the Contract Documents thoroughly, including plans, specifications and quantities and must familiarize himself/herself with the site, existing project conditions, and all federal, state and local laws, ordinances, rules, regulations and policies that may affect cost, progress or performance of the Project work required by the Contract Documents and study and carefully correlate Bidder's observations with the Contract Documents, including the contract quantities, and make written requests for interpretation to the City Engineer promptly after discovering any conflicts, errors, ambiguities or inconsistencies.

2. Quantities of work and material in the Bid Form or in the plans are approximate only and for the purpose of providing Bidder with information that he (she) may use as a general guidance for his or her own quantity take-off during computation of the unit price Bid and to provide unit prices to compute for the interim Applications for Payments, and additions/deletions to the Contract.

3. Project Superintendent: The contractor shall provide a qualified Superintendent to remain on the job site at all times when work is being performed. The Superintendent shall be present at the pre- construction meeting. The contractor shall notify the local utility company by letter prior to the preconstruction meeting appointing the Superintendent for this project including a formal resume showing qualifications.

4. Bidder or Contractor must familiarize himself (herself) with the Instructions to Bidders and General Conditions that are a part of the Contract Documents prior to the submittal of the Unit Price Bid.

5. Bidder is required, before submitting bid and prior to starting of the work, familiarize himself with utilities, easements, ect. that may affect the contract work. Though considerable effort has been made by the FPUA and the City to accurately locate existing drainage and utility lines and any appurtenances prior to design, locations, elevations, dimensions and conditions are approximate and must be confirmed prior to construction.

6. It is the responsibility of the Bidder or Contractor to verify elevations, locations and conditions prior to Bid submittal or starting of the work. Any damage to utilities, structures or services shall be repaired or replaced at the contractors expense in a manner that will be approved by the City Engineer.

7. All elevations shown on the Contract Documents are referenced to National Geodetic Vertical Datum (NGVD).

8. It is the responsibility of the Contractor to notify all utility companies two working days prior to excavation, as required by Chapter 77-153 F.S.. Contractor is responsible for the coordination of utility relocation, temporary services, or any disruption of said services.

9. Personal property including but not limited to, signs, plants, planters, driveways, shrubs, mailboxes, fences, utility line markers, poles, irrigation equipment, etc. within the limits of construction, shall be removed, replaced or relocated at the Contractor's expense, as required by the construction. Each item shall be replaced to its original condition, or better, and its original location by the Contractor. Different locations for replacements must be authorized by the City Engineer. The Contractor shall notify property owners at least seventy-two (72) hours in advance of any removal or relocation /replacement of all personal property within the limits of construction. All Trees 6" in diameter or larger are to remain unless the removal is noted on the plans or approved by the City Engineer.

10. Asphalt shall be sawcut, removed and replaced in accordance with the open cut details shown on plans. Asphalt edges shall be smooth and on a straight line.

11. Contractor must submit a "Maintenance of Traffic Plan (MOT)" in accordance with the USDOT/FHA "Manual on Uniform Traffic Control Devices" and the FDOT "Roadway and Traffic Design Standards" at the Pre-Construction Conference for the City Engineer's review and approval, prior to the start of construction. Contractor shall be responsible for the maintenance of traffic, in accordance with approved MOT, and shall maintain proper access to adjacent properties at all times during the time of the Contract.

12. All excess material, including, but not limited to, pipe, earthwork material, structures, etc., shall be the property of the City of Ft. Pierce. The City Engineer or his designee shall determine what or how much of the excess material shall be disposed of by Contractor. Cost of disposal of all excess material shall be included in the Bid.

13. Contractor shall remove and replace all pipes, culverts, structures and appurtenances damaged during construction at no expense to the City of Ft. Pierce.

14. The limits of construction shown on the approved drawings are the maximum limit for which items will be paid by the City. Any removals or replacements beyond the construction limits without the authorization of the City Engineer, shall not be paid to Contractor.

15. Two sets of As-built drawings, and one copy of a digital format disc prepared by a PLS must be submitted with the final payment request.

16. Whenever Contractor needs to remove existing storm sewers to facilitate the placement of new facilities indicated in drawings, he (she) shall replace pipes with material of reinforced concrete pipe. Replacement of storm sewers that have been disturbed must be determined jointly by the Contractor and the City Engineer. Replacement of pipe joints may be accomplished by the use of concrete collar, per FDOT Specifications.

17. In the event structures, such as inlets, catch basins, manholes, outfalls, etc. are in proximity to the storm sewer which has been removed or damaged, at least one full joint of pipe must be undisturbed prior to entering such structures. If a full undisturbed joint does not remain, Contractor shall replace the storm sewer completely to the structure at no additional cost to the City. In addition, if in replacing the storm sewer to the structure, Contractor causes the existing structures to be disturbed, cracked or otherwise deemed deficient by the City Engineer, Contractor shall be required to replace said structures at no additional cost to the City.

18. The "Trench Safety Act" shall be incorporated into this contract as enacted by the Legislature of the State of Florida to be in effect as of October 1, 1990.

19. All inlets and pipe shall be protected during construction to prevent siltation in the drainage systems by way of temporary plugs and plywood or plastic covers over the inlets. The entire drainage systems shall be cleaned of all debris prior to final acceptance. All concrete shall be a minimum 3,000 PSI.

20. All proposed elevations refer to finished grades.

21. The contractor must obtain a water use permit prior to construction dewatering unless the work qualifies for a general permit pursuant to subsection 40E-20.302(4), F.A.C.

22. All construction must comply with the City of FT. Pierce Code of Ordinances and the FDOT Roadway and Traffic Design Standards, latest edition.

23. All disturbed areas shall be sodded upon completion of grading after as-built grade elevations are approved by the Engineer.

24. Backfill to be compacted in no greater than one (1) foot lifts to the density of the undisturbed adjacent soils.

25. There is to be no off-site hauling without prior approval and all excavated material shall be used on-site.

26. A stable permanent and accessible elevation reference shall be established on or within one hundred feet (100') of all permitted discharge structures no later than the submission of the certification to the water management district. The location of the elevation reference must be note on or within the certification report.

27. Pipe culverts and storm sewers shall be constructed and installed in accordance with section 430 F.D.O.T. Standard Specifications for Road and Bridge Construction, latest edition and City of Fort Pierce Specifications.

28. Erosion control measures shall be taken by contractor during construction as per FDOT Standard Index No. 102:

- A. Silt Fence shall be installed along the entire perimeter of the project adjacent to any soil disturbing activities.
- B. All drainage structures are to be protected during construction as per FDOT Index Standard No. 102.
- C. All fencing, grading, signing, and sodding shall be maintained during the contract life. All damaged work shall be restored at no cost to the City.

29. Contractor shall provide maintenance of traffic in accordance with FDOT Index 600 Series, MUTCD and these plans. The contractor shall maintain at all times vehicular and pedestrian access to all residences.

30. No trees are to be removed or relocated without prior approval from the City of Fort Pierce field engineer (City permit required for any tree removal).

31. Complete "As-Built" information relative to location, size and depth of new pipes, manholes, inlets, etc. Shall be accurately recorded by the contractor and submitted (signed and sealed by a Florida certified P.L.S.) to the City of Fort Pierce, Engineering Department prior to final acceptance of the work. All record information on existing utility crossings encountered during construction, including but not limited to pipes, inlets, manholes, etc. Shall be recorded by a Florida registered surveyor and shown on the record drawings. The cost of signed and sealed as-builts shall be included in overall bid and no additional compensation will be allowed.

32. All drainage pipes shall be approved by City of Fort Pierce Engineering Department. The contractor shall construct a filter fabric jacket at all proposed storm sewer joints as per FDOT Index 280. Cost of the filter fabric jacket shall be included in unit pipe costs.

33. No existing base material removed in excavation shall be reused as proposed base material.

34. Staging and material storage shall not be conducted on abutting private property without written approval from the owner. Staging and storage shall be conducted within public R/W and /or construction easements (access license agreements).

GEODETIC INFORMATION CENTER
ATTN: C-185
ROCKVILLE, MD 30852
PHONE: (301)443-8631

48 HOURS BEFORE DIGGING
BROWARD • PALM BEACH • INDIAN RIVER
ST. LUCIE • MARTIN COUNTIES
CALL TOLL FREE
811
NO CUTS UNDERGROUND UTILITIES
NOTIFICATION CENTER

SOUTH 7TH STREET IMPROVEMENTS
(10TH STREET TO WENDELL ROAD)
GENERAL NOTES



CITY OF FORT PIERCE
DEPARTMENT OF ENGINEERING
100 NORTH U.S. 1 P.O. BOX 1480
FORT PIERCE FLORIDA, 34954

DATE: MAY 2017	SCALE: N.T.S.
SURVEY BY: C.BLACKWELDER	DRAWN BY: D.SUMNER
DESIGNED BY: T.TELLE	APPROVED BY: J.ANDREWS

No.	DATE	BY	REVISIONS

PROJECT No. SOUTH 7TH	SHEET No. 2 OF 7
DRAWING No.	

SOUTH 7TH STREET IMPROVEMENTS
(10TH STREET TO WENDELL ROAD)
ROADWAY PLAN



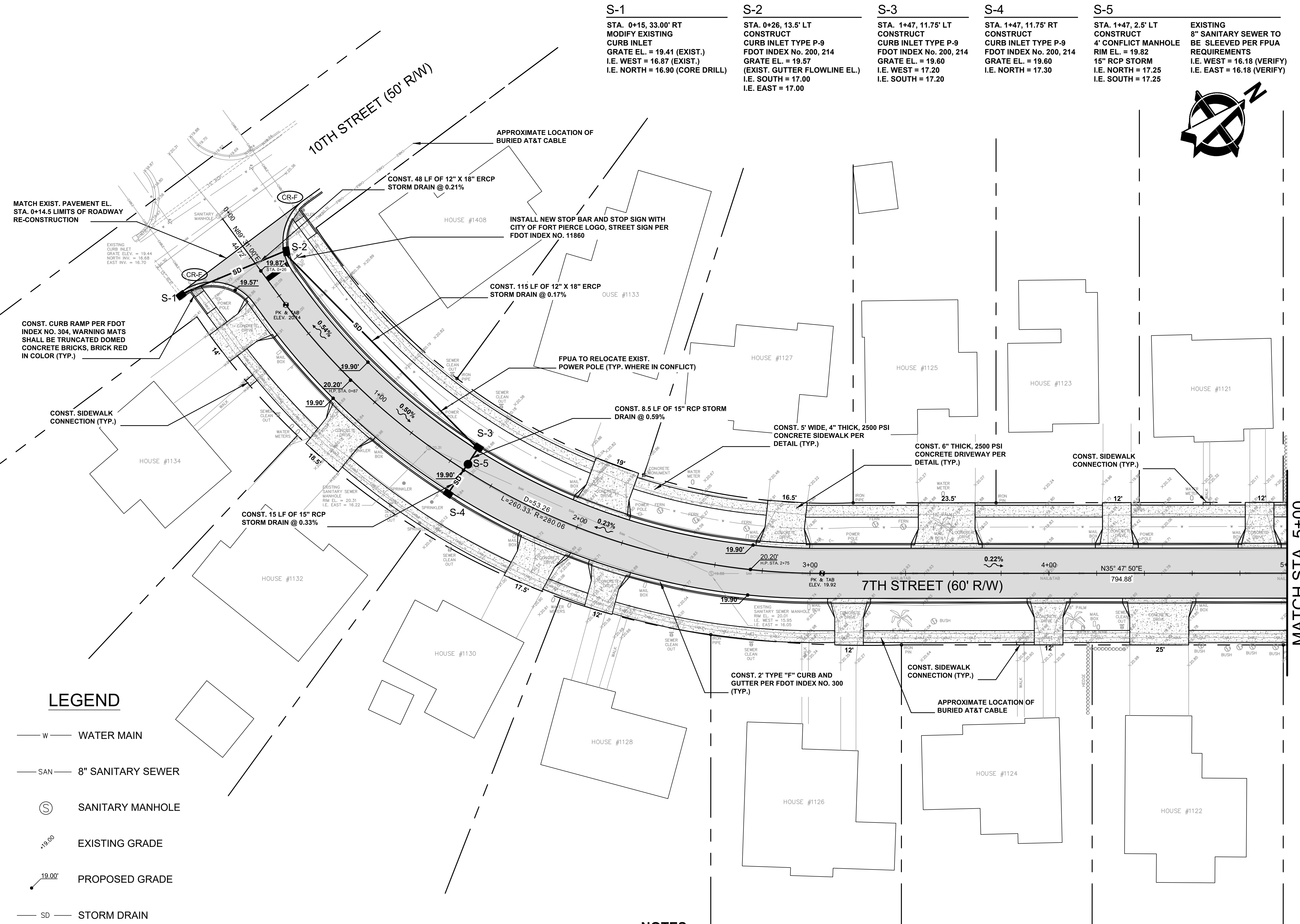
CITY OF FORT PIERCE
DEPARTMENT OF ENGINEERING
100 NORTH U.S. 1 P.O. BOX 1480
FORT PIERCE FLORIDA, 34954

DATE: MAY 2017	SCALE: 1" = 20'
SURVEY BY: C.BLACKWELDER	DRAWN BY: D.SUMNER
DESIGNED BY: T.TELLE	APPROVED BY: J.ANDREWS

No.	DATE	BY	REVISIONS
1	3/15/19	DAS	REV. PER J.R.A.

PROJECT No. SOUTH 7TH	SHEET No. 3 OF 7
DRAWING No.	

- S-1**
STA. 0+15, 33.00' RT
MODIFY EXISTING CURB INLET
GRATE EL. = 19.41 (EXIST.)
I.E. WEST = 16.87 (EXIST.)
I.E. NORTH = 16.90 (CORE DRILL)
- S-2**
STA. 0+26, 13.5' LT
CONSTRUCT CURB INLET TYPE P-9
FDOT INDEX No. 200, 214
GRATE EL. = 19.57 (EXIST. GUTTER FLOWLINE EL.)
I.E. SOUTH = 17.00
I.E. EAST = 17.00
- S-3**
STA. 1+47, 11.75' LT
CONSTRUCT CURB INLET TYPE P-9
FDOT INDEX No. 200, 214
GRATE EL. = 19.60
I.E. WEST = 17.20
I.E. SOUTH = 17.20
- S-4**
STA. 1+47, 11.75' RT
CONSTRUCT CURB INLET TYPE P-9
FDOT INDEX No. 200, 214
GRATE EL. = 19.60
I.E. NORTH = 17.30
- S-5**
STA. 1+47, 2.5' LT
CONSTRUCT 4' CONFLICT MANHOLE
RIM EL. = 19.82
15" RCP STORM
I.E. NORTH = 17.25
I.E. SOUTH = 17.25

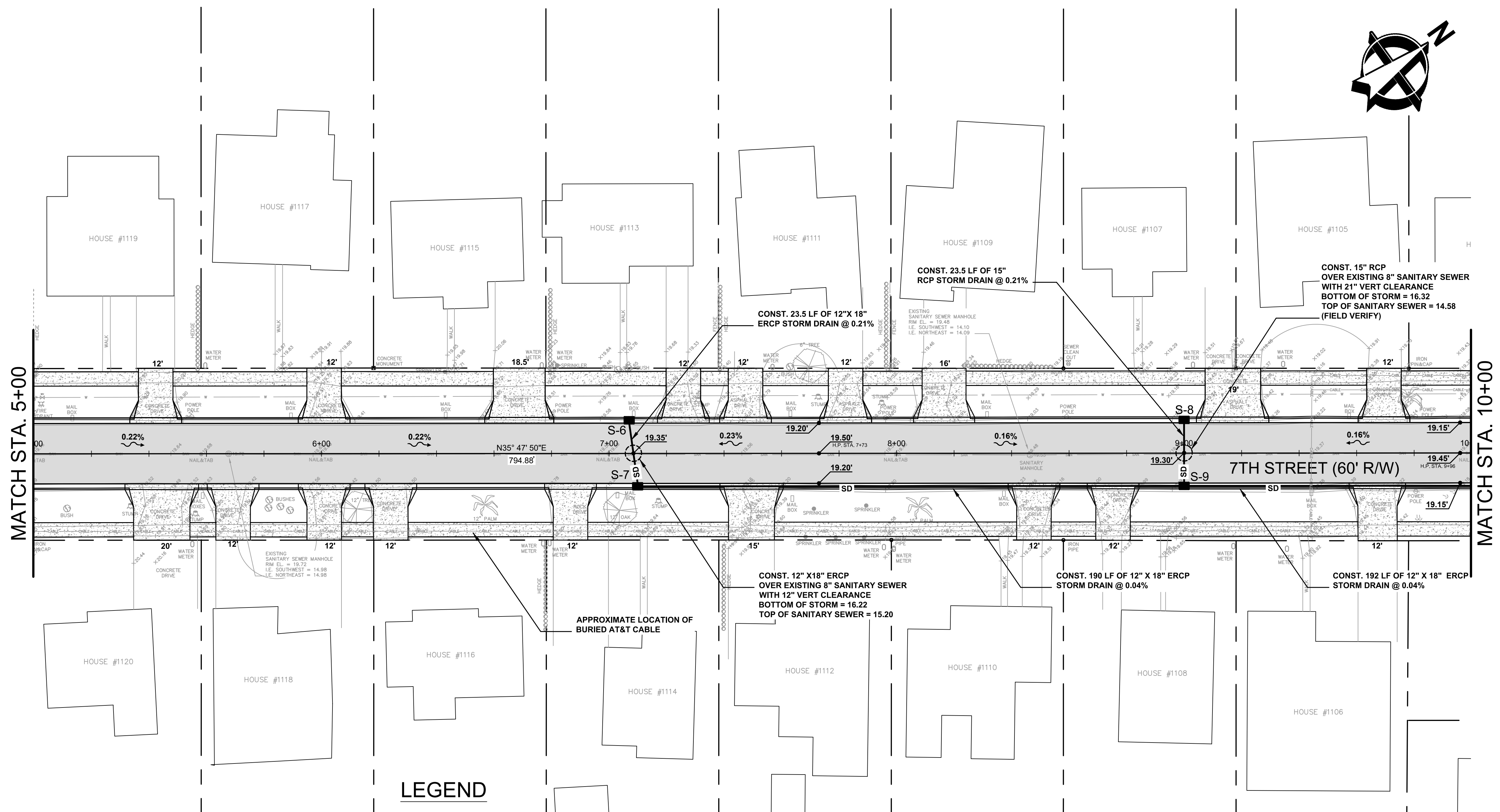


LEGEND

- W — WATER MAIN
- SAN — 8" SANITARY SEWER
- ⊙ SANITARY MANHOLE
- 19.00 EXISTING GRADE
- 19.00' PROPOSED GRADE
- SD — STORM DRAIN

- NOTES:**
- SANITARY MANHOLE ADJUSTMENTS SHALL BE COORDINATED WITH FPUA
 - RELOCATE MAILBOXES AS NEEDED
 - EXISTING UTILITY INFORMATION SHALL BE VERIFIED PRIOR TO CONSTRUCTION COMMENCEMENT
 - SEE TYPICAL STRIPING DETAIL FOR ROADWAY STRIPING SPECIFICATIONS

S-6 STA. 7+07, 11.75' LT CONSTRUCT CURB INLET TYPE P-9 FDOT INDEX No. 200, 214 GRATE EL. = 19.05 I.E. SOUTHEAST = 16.55	S-7 STA. 7+10, 11.75' RT CONSTRUCT CURB INLET TYPE P-9 FDOT INDEX No. 200, 214 GRATE EL. = 19.05 I.E. NORTHWEST = 16.50 I.E. NORTHEAST = 16.50	S-8 STA. 9+00, 11.75' LT CONSTRUCT CURB INLET TYPE P-9 FDOT INDEX No. 200, 214 GRATE EL. = 19.00 I.E. SOUTHEAST = 16.55	S-9 STA. 9+00, 11.75' RT CONSTRUCT CURB INLET TYPE P-9 FDOT INDEX No. 200, 214 GRATE EL. = 19.00 I.E. NORTHWEST = 16.50 I.E. SOUTHWEST = 16.42 I.E. NORTHEAST = 16.42
--------------------------------------------------------------------------------------------------------------------------------------------------	----------------------------------------------------------------------------------------------------------------------------------------------------------------------------	--------------------------------------------------------------------------------------------------------------------------------------------------	------------------------------------------------------------------------------------------------------------------------------------------------------------------------------------------------------



LEGEND

- W — WATER MAIN
- SAN — 8" SANITARY SEWER
- ⊙ SANITARY MANHOLE
- 19.00 EXISTING GRADE
- 19.00 PROPOSED GRADE
- SD — STORM DRAIN

- NOTES:**
1. SANITARY MANHOLE ADJUSTMENTS SHALL BE COORDINATED WITH FPUA
 2. RELOCATE MAILBOXES AS NEEDED
 3. EXISTING UTILITY INFORMATION SHALL BE VERIFIED PRIOR TO CONSTRUCTION COMMENCEMENT
 4. SEE TYPICAL STRIPING DETAIL FOR ROADWAY STRIPING SPECIFICATIONS

SOUTH 7TH STREET IMPROVEMENTS
(10TH STREET TO WENDELL ROAD)
ROADWAY PLAN



CITY OF FORT PIERCE
DEPARTMENT OF ENGINEERING
100 NORTH U.S. 1 P.O. BOX 1480
FORT PIERCE FLORIDA, 34954

DATE: MAY 2017	SCALE: 1" = 20'
SURVEY BY: C.BLACKWELDER	DRAWN BY: D.SUMNER
DESIGNED BY: T.TELLE	APPROVED BY: J.ANDREWS

No.	DATE	BY	REVISIONS

PROJECT No. SOUTH 7TH	SHEET No. 4 OF 7
DRAWING No.	

S-10

STA. 10+92, 11.75' LT
CONSTRUCT CURB INLET TYPE P-9
FDOT INDEX No. 200, 214
GRATE EL. = 18.90
I.E. SOUTHEAST = 16.35

S-11

STA. 10+92, 11.75' RT
CONSTRUCT CURB INLET TYPE P-9
FDOT INDEX No. 200, 214
GRATE EL. = 18.90
I.E. NORTHWEST = 16.30
I.E. SOUTHWEST = 16.35
I.E. NORTHEAST = 16.25

S-12

STA. 0+11.75, 6' LT
CONSTRUCT 4' MANHOLE
FDOT INDEX NO. 200, 201
RIM EL. = 19.60
I.E. SOUTHWEST = 16.20
I.E. SOUTHEAST = 16.20

S-13

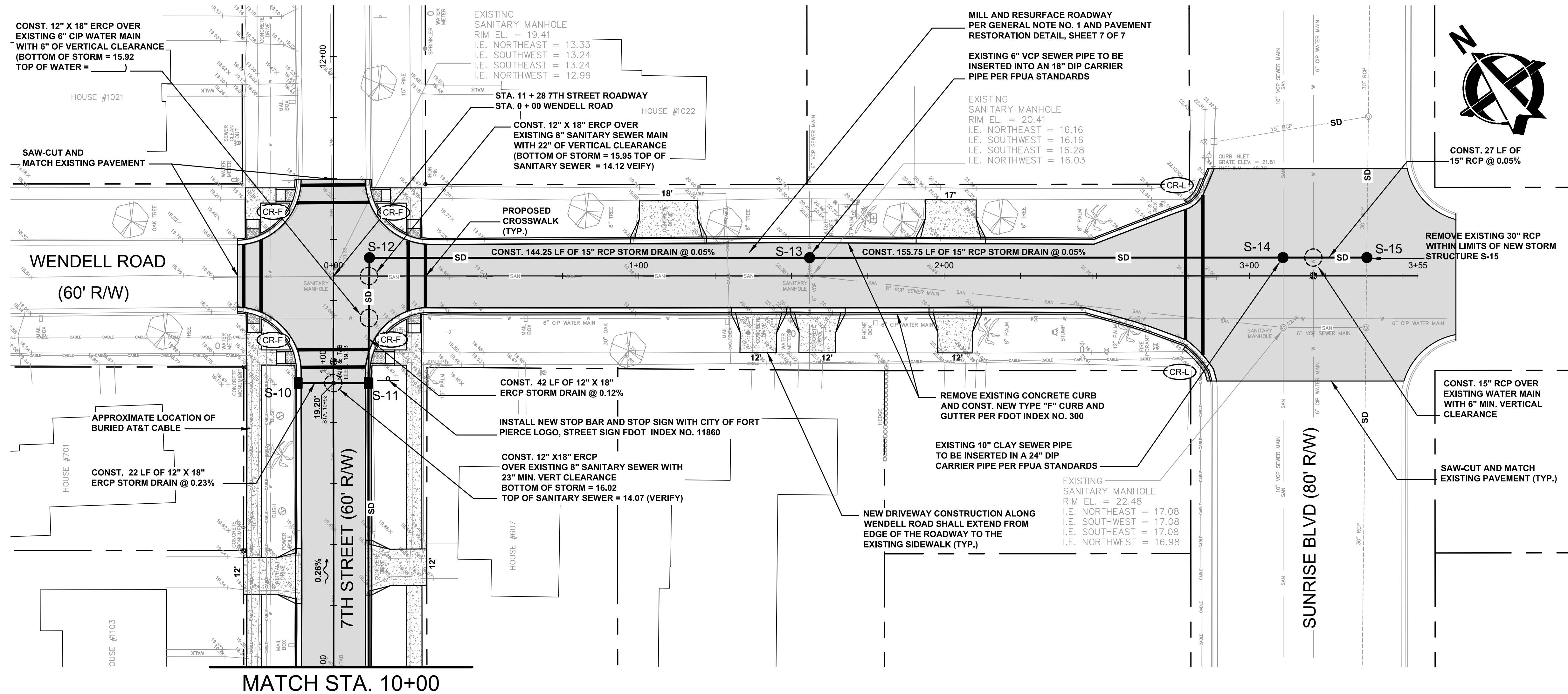
STA. 1+56, 6' LT
CONSTRUCT 4' Ø CONFLICT MANHOLE
FDOT INDEX NO. 200, 201
RIM EL. = 20.31± (MATCH EXISTING GRADE)
I.E. NORTHWEST = 16.13
I.E. SOUTHEAST = 16.13
I.E. NORTHEAST (18" DIP CASING) = 15.70±
I.E. SOUTHWEST (18" DIP CASING) = 15.70±
STRUCTURE BOTTOM EL. = 14.50

S-14

STA. 3+11, 6' LT
CONSTRUCT 5' Ø CONFLICT MANHOLE
FDOT INDEX NO. 200, 201
RIM EL. = 22.50± (MATCH EXISTING GRADE)
I.E. NORTHWEST = 16.06
I.E. SOUTHEAST = 16.06
I.E. NORTHEAST (24" DIP CASING) = 16.57±
I.E. SOUTHWEST (24" DIP CASING) = 16.57±

S-15

STA. 3+38, 6' LT
CONSTRUCT 6' Ø MANHOLE
FDOT INDEX NO. 200, 201
RIM EL. = 22.30± (MATCH EXISTING GRADE)
EXISTING I.E. NORTHEAST = 16.05 (VERIFY)
EXISTING I.E. SOUTHWEST = 16.05 (VERIFY)
I.E. NORTHWEST = 16.05



LEGEND

- W — WATER MAIN
- SAN — 8" SANITARY SEWER
- ⊙ SANITARY MANHOLE
- 19.00 EXISTING GRADE
- 19.00' PROPOSED GRADE
- SD — STORM DRAIN

GENERAL NOTES:

1. CONTRACTOR TO MILL EXISTING PAVEMENT 1" MIN. AND RESURFACE WITH 1" OF SP-9.5. CONTRACTOR TO UTILIZE LEVELING COURSE AS NEEDED TO ENSURE AND EVEN FINISHED SURFACE.
2. SANITARY MANHOLE ADJUSTMENTS SHALL BE COORDINATED WITH FPUA
3. RELOCATE MAILBOXES AS NEEDED
4. EXISTING UTILITY INFORMATION SHALL BE VERIFIED PRIOR TO CONSTRUCTION COMMENCEMENT
5. SEE TYPICAL STRIPING DETAIL FOR ROADWAY STRIPING SPECIFICATIONS

SOUTH 7TH STREET IMPROVEMENTS
(10TH STREET TO WENDELL ROAD)
ROADWAY PLAN

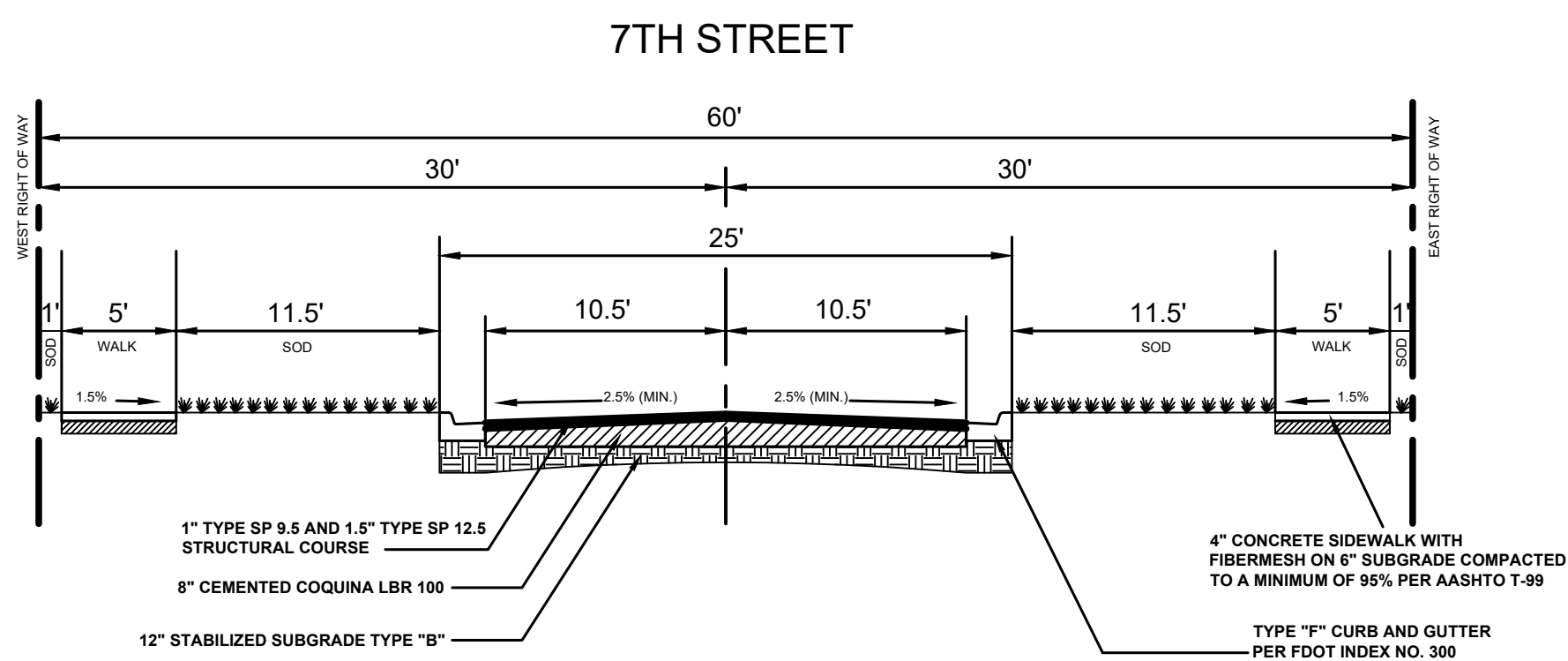


CITY OF FORT PIERCE
DEPARTMENT OF ENGINEERING
100 NORTH U.S. 1 P.O. BOX 1480
FORT PIERCE FLORIDA, 34954

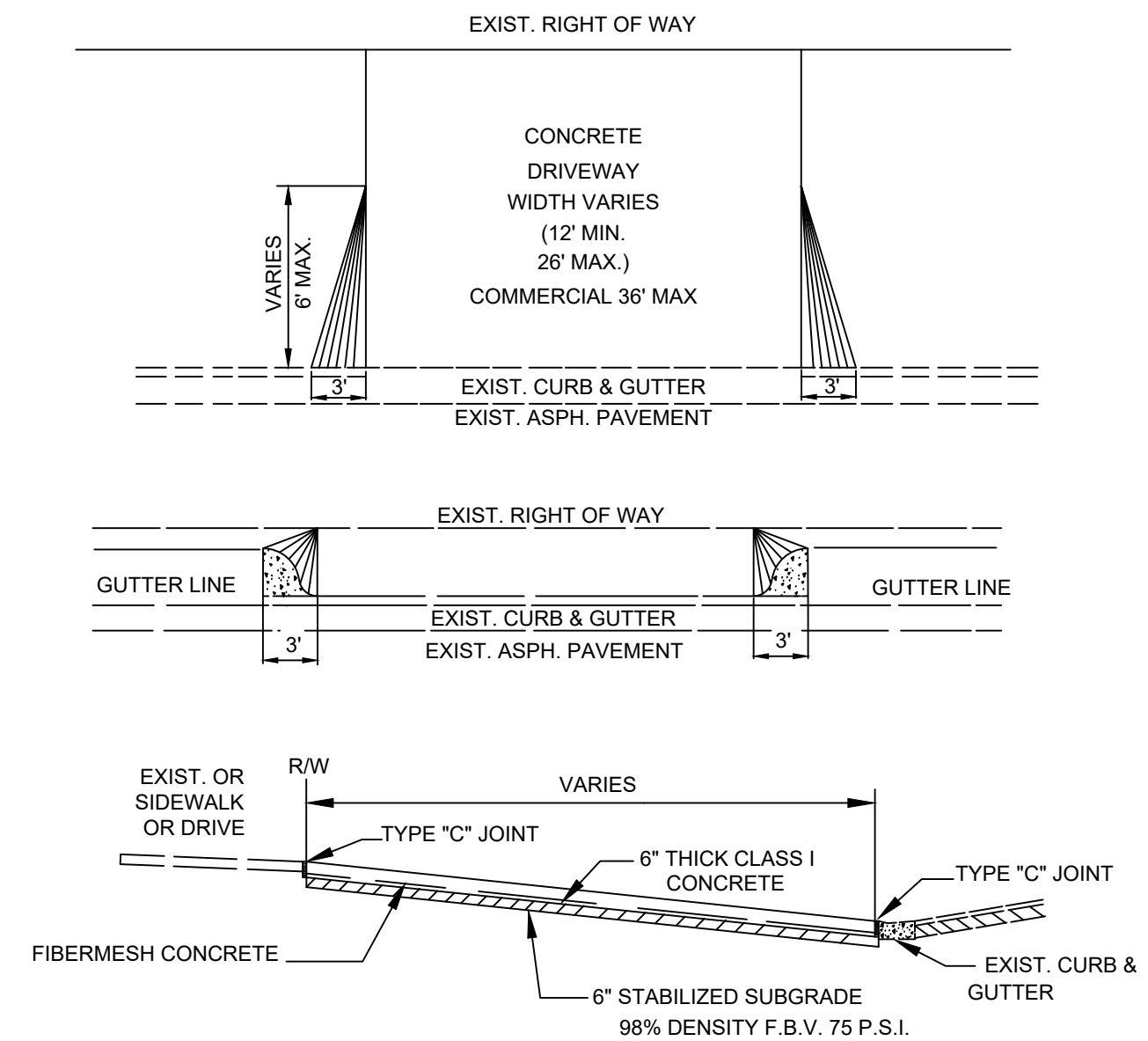
DATE: MAY 2017	SCALE: 1" = 20'
SURVEY BY: C.BLACKWELDER	DRAWN BY: D.SUMNER
DESIGNED BY: T.TELLE	APPROVED BY: J.ANDREWS

No.	DATE	BY	REVISIONS
1	3/15/19	DAS	REV. PER J.R.A.

PROJECT No. SOUTH 7TH	SHEET No. 5 OF 7
DRAWING No.	

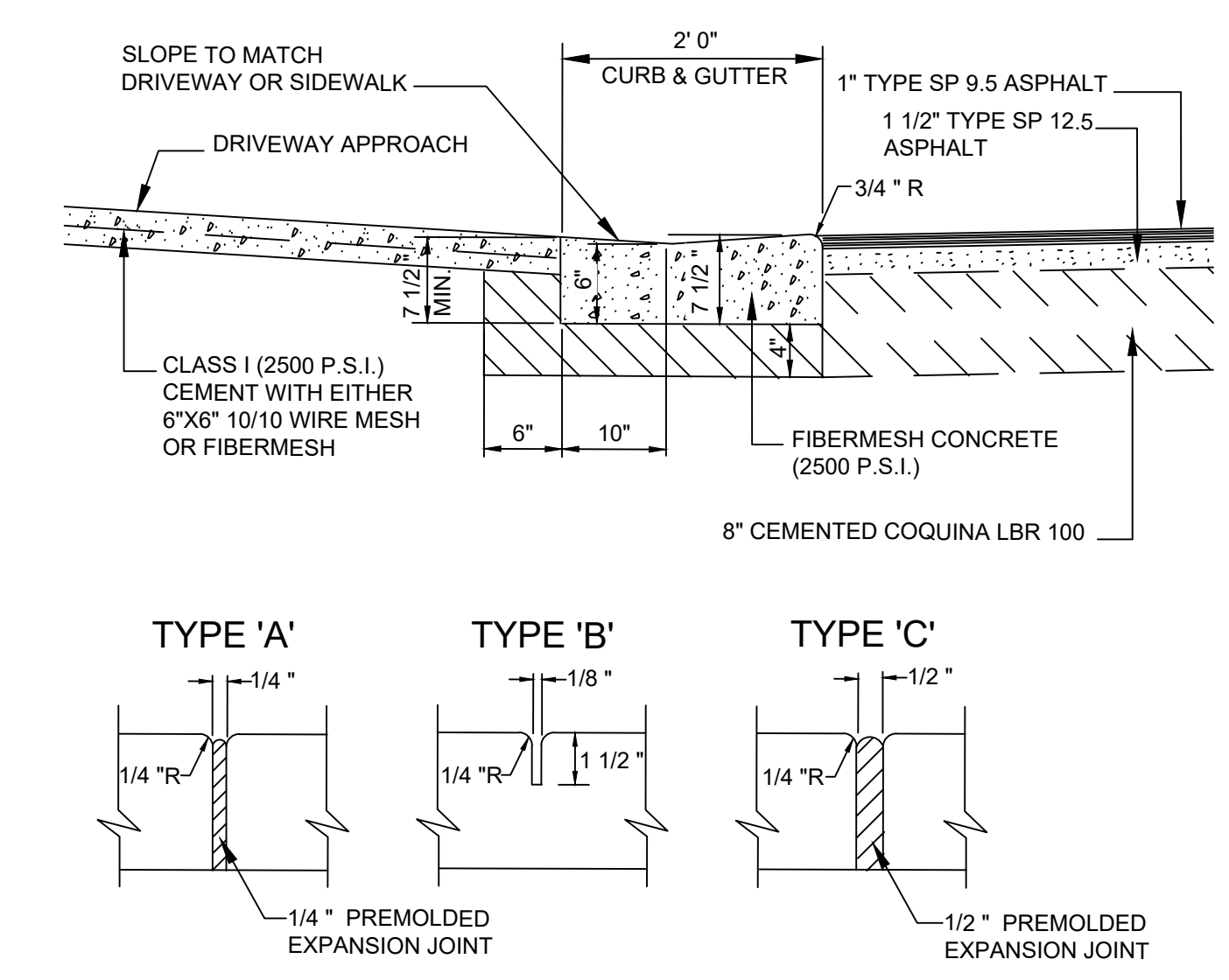


TYPICAL ROADWAY SECTION



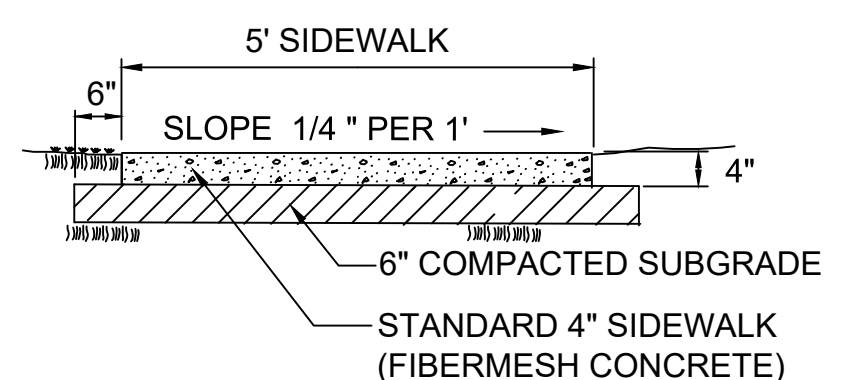
GENERAL CONSTRUCTION NOTES:
 1. CONCRETE STRENGTH TO BE 2500 P.S.I. AT 28 DAYS.
 2. SUBBASE TO BE 98% DENSITY - F.B.V. 75 P.S.I.
 3. THE CONCRETE SHALL BE GIVEN A BROOM FINISH AND THE EDGES OF THE SIDEWALK SHALL BE FINISHED WITH A EDGING TOOL HAVING AN RADIUS OF 1/2 INCH.

DRIVEWAY DETAIL

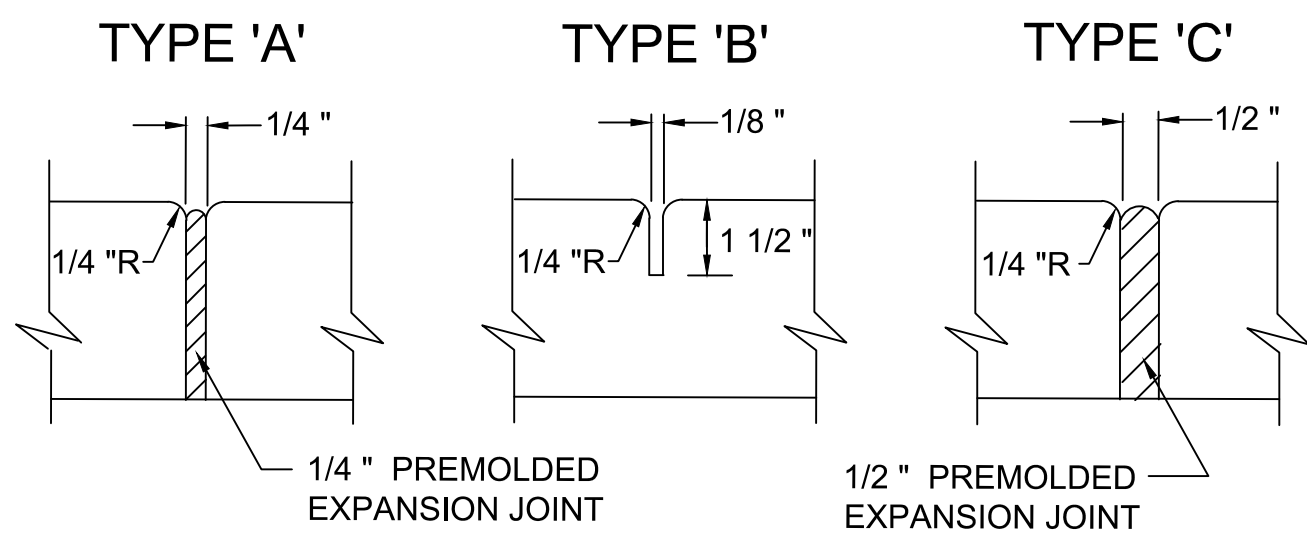


'A' At P.C. & P.T. of curves and at junction of existing and new sidewalks.
 'B' 5' center to center on new sidewalks and 10' center to center on new curb and gutter
 'C' Where new sidewalk abuts concrete curbs, driveway and similar structures.

CONCRETE DRIVEWAY CURB WITH JOINT DETAIL

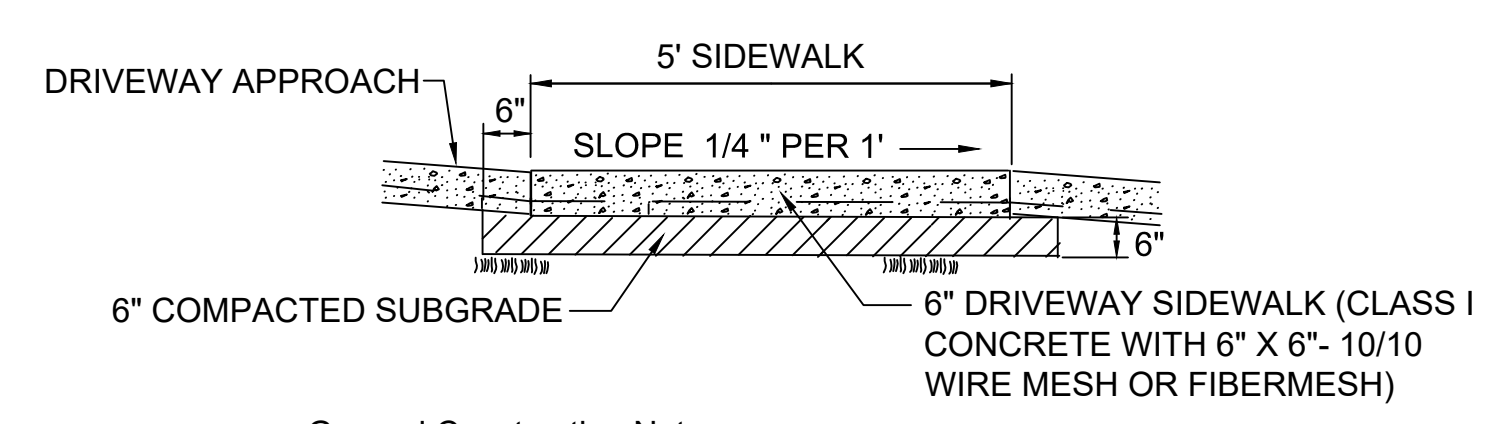


General Construction Notes:
 1. Concrete strength to be 2500 P.S.I. at 28 days.
 2. Tooled dummy contraction joints every 5' (Type 'B' Joints)
 3. Expansion joints w/premolded filler at 100' o/c (Type 'C' Joints)
 4. Subbase to be 98% Density F.B.V. 75 P.S.I.
 5. The concrete shall be given a broom finish and the edges of the sidewalk shall be finished with an edging tool having a radius of 1/2 inch

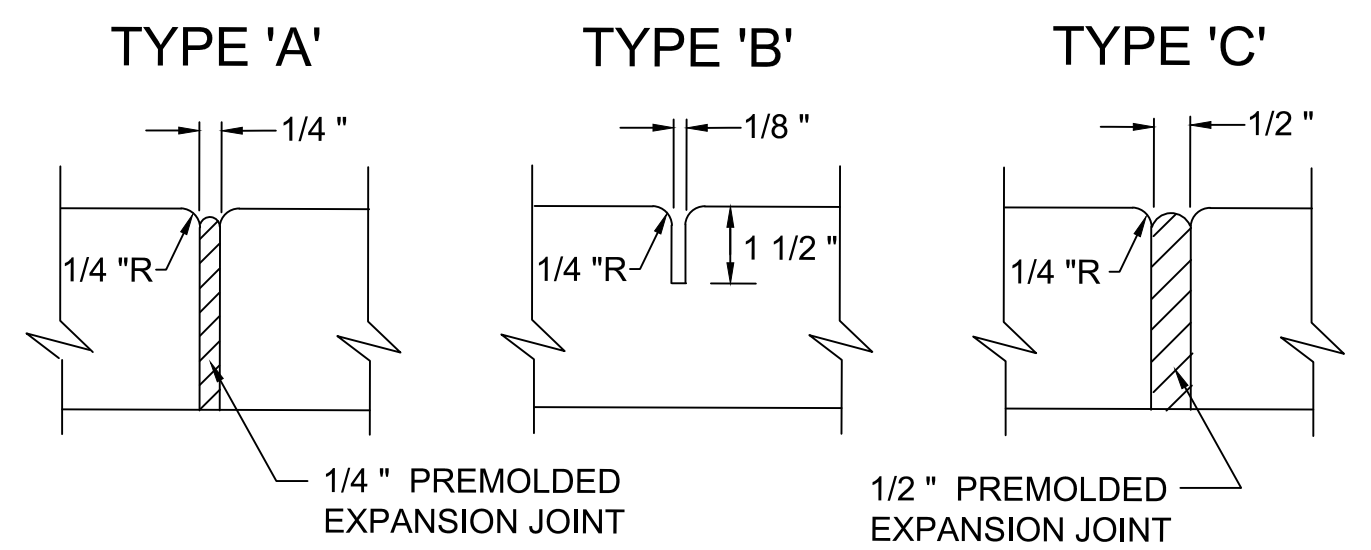


'A' At P.C. & P.T. of curves and at junction of existing and new sidewalks.
 'B' 5' center to center on new sidewalks and 10' center to center on new curb and gutter
 'C' Where new sidewalk abuts concrete curbs, driveway and similar structures.

TYPICAL 4" SIDEWALK DETAIL

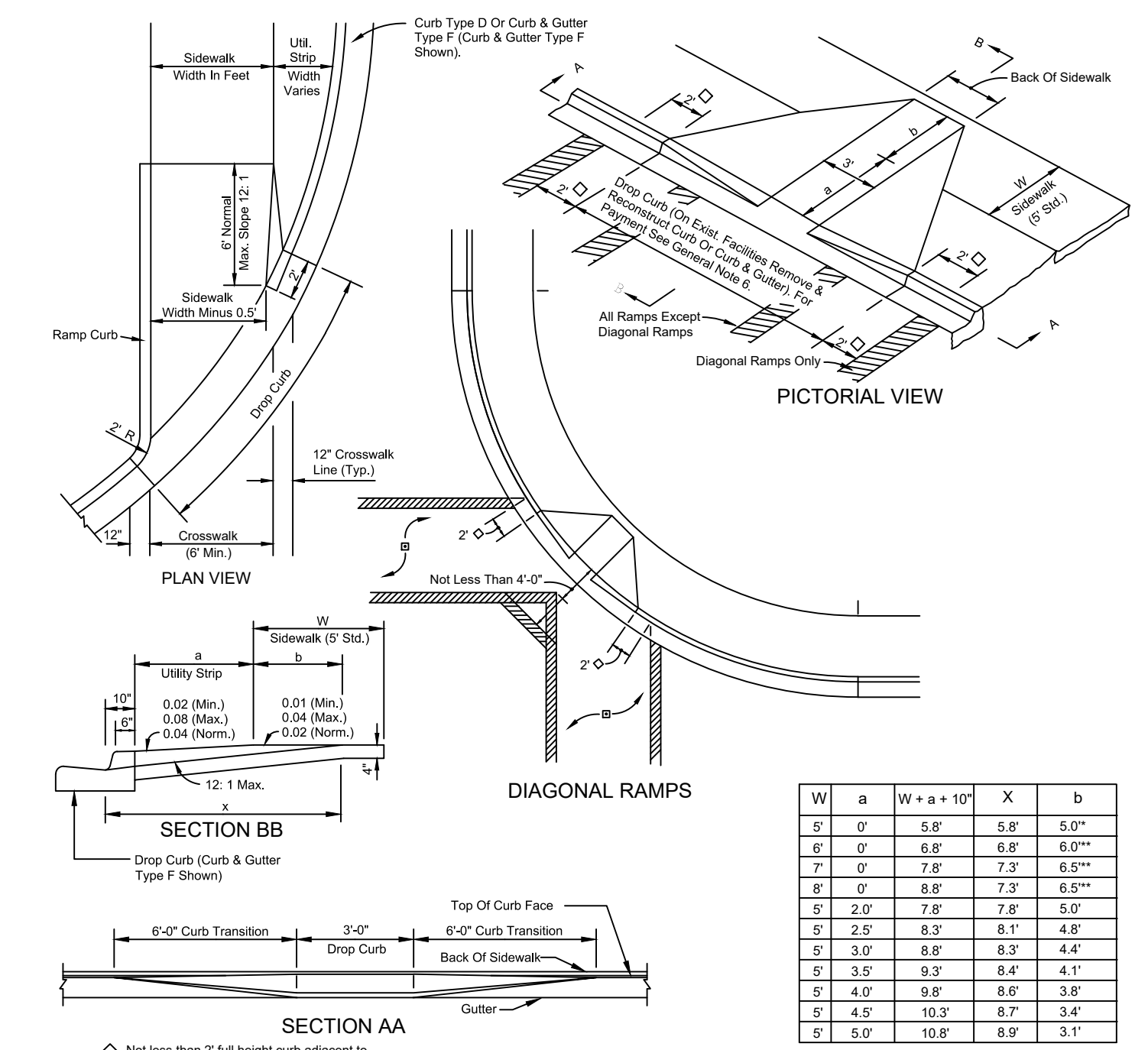


General Construction Notes:
 1. Concrete strength to be 2500 P.S.I. at 28 days.
 2. Tooled dummy contraction joints every 5' (Type 'B' Joints)
 3. Expansion joints w/premolded filler at 100' o/c (Type 'C' Joints)
 4. Subbase to be 98% Density F.B.V. 75 P.S.I.
 5. The concrete shall be given a broom finish and the edges of the sidewalk shall be finished with an edging tool having a radius of 1/2 inch



'A' At P.C. & P.T. of curves and at junction of existing and new sidewalks.
 'B' 5' center to center on new sidewalks and 10' center to center on new curb and gutter
 'C' Where new sidewalk abuts concrete curbs, driveway and similar structures.

TYPICAL 6" SIDEWALK DETAIL



NOTE: ALL WARNING MATS SHALL BE CONCRETE TRUNCATED BRICK DOMED PAVERS, BRICK RED IN COLOR
 b=Distance from front edge of sidewalk to back point of 12: 1 slope.
 *Back of sidewalk drop required for all sidewalk slopes.
 **Back of sidewalk drop required for sidewalk slopes 0.04 and part 0.02.

HANDICAP RAMP DETAIL

SOUTH 7TH STREET IMPROVEMENTS
 (10TH STREET TO WENDELL ROAD)
DETAILS

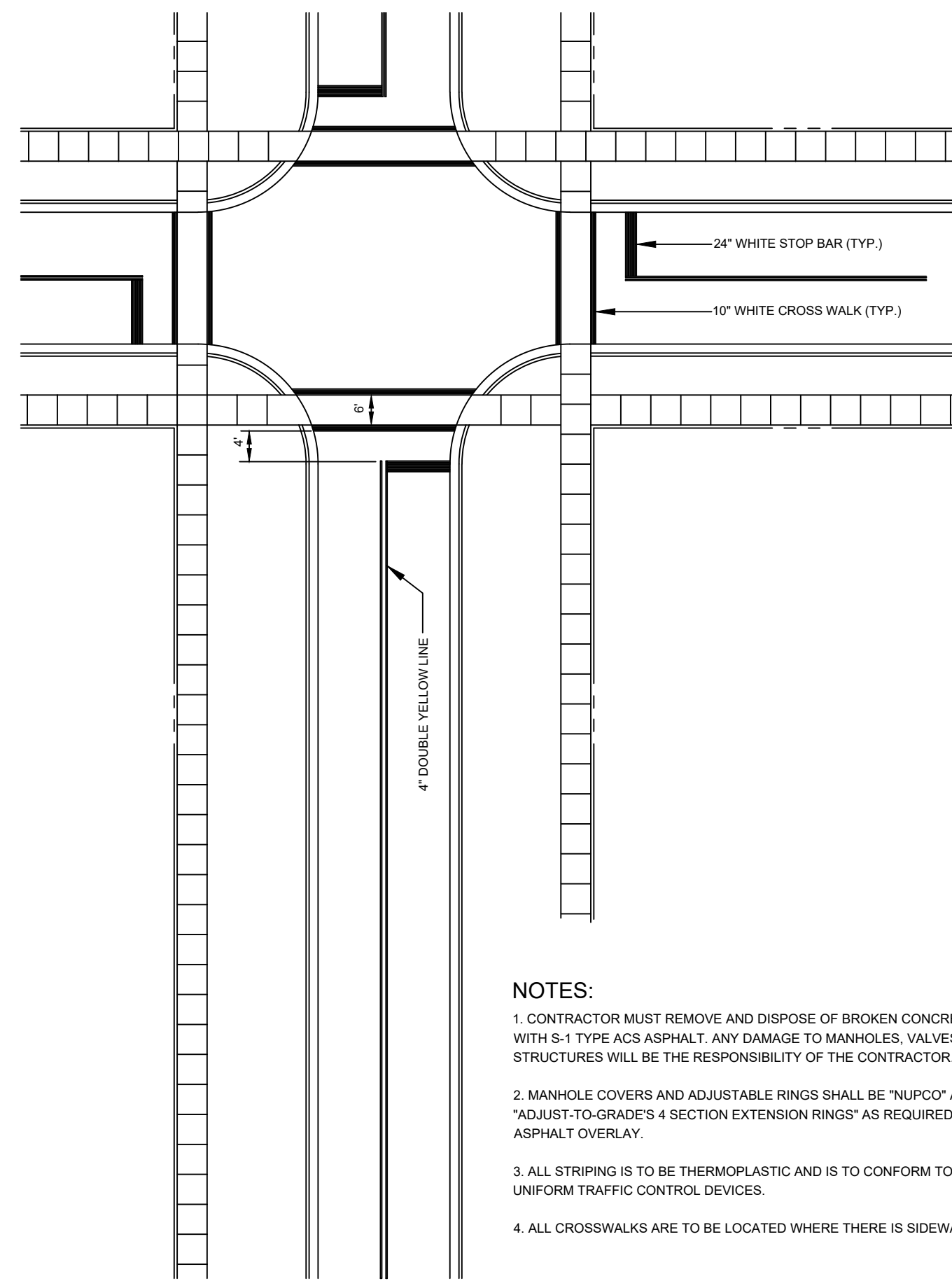


CITY OF FORT PIERCE
 DEPARTMENT OF ENGINEERING
 100 NORTH U.S. 1 P.O. BOX 1480
 FORT PIERCE FLORIDA, 34954

DATE: MAY 2017	SCALE: N.T.S.
SURVEY BY: C.BLACKWELDER	DRAWN BY: D.SUMNER
DESIGNED BY: T.TELLE	APPROVED BY: J.ANDREWS

No.	DATE	BY	REVISIONS

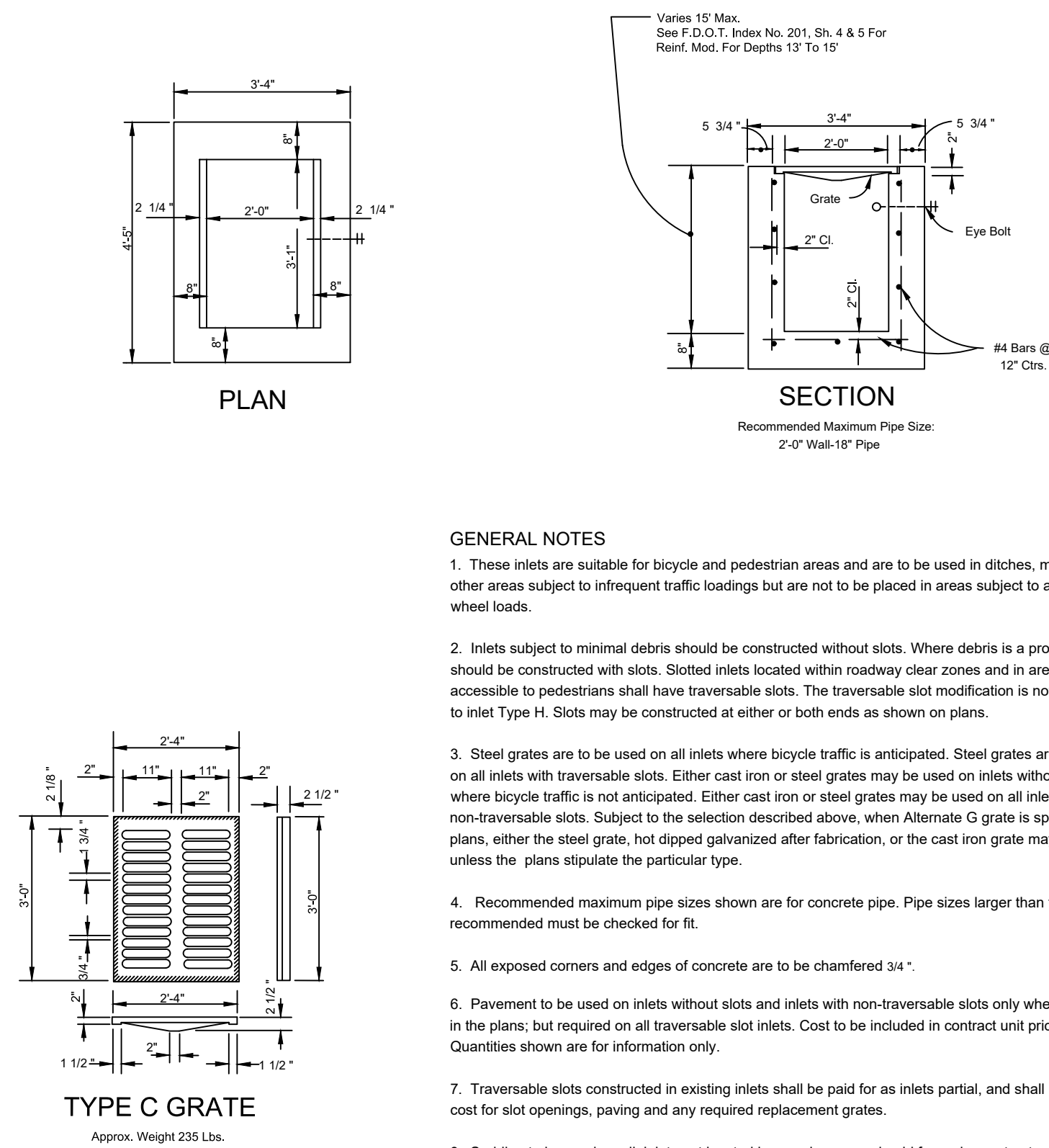
PROJECT No. SOUTH 7TH	SHEET No. 6 OF 7
DRAWING No.	



NOTES:

- CONTRACTOR MUST REMOVE AND DISPOSE OF BROKEN CONCRETE COLLARS AND REPLACE WITH S-1 TYPE ACS ASPHALT. ANY DAMAGE TO MANHOLES, VALVES OR OTHER EXISTING STRUCTURES WILL BE THE RESPONSIBILITY OF THE CONTRACTOR.
- MANHOLE COVERS AND ADJUSTABLE RINGS SHALL BE "NUPCO" AND SHALL BE "ADJUST-TO-GRADE'S 4 SECTION EXTENSION RINGS" AS REQUIRED BY THE THICKNESS OF ASPHALT OVERLAY.
- ALL STRIPING IS TO BE THERMOPLASTIC AND IS TO CONFORM TO F.D.O.T. STANDARDS AND UNIFORM TRAFFIC CONTROL DEVICES.
- ALL CROSSWALKS ARE TO BE LOCATED WHERE THERE IS SIDEWALK ONLY.

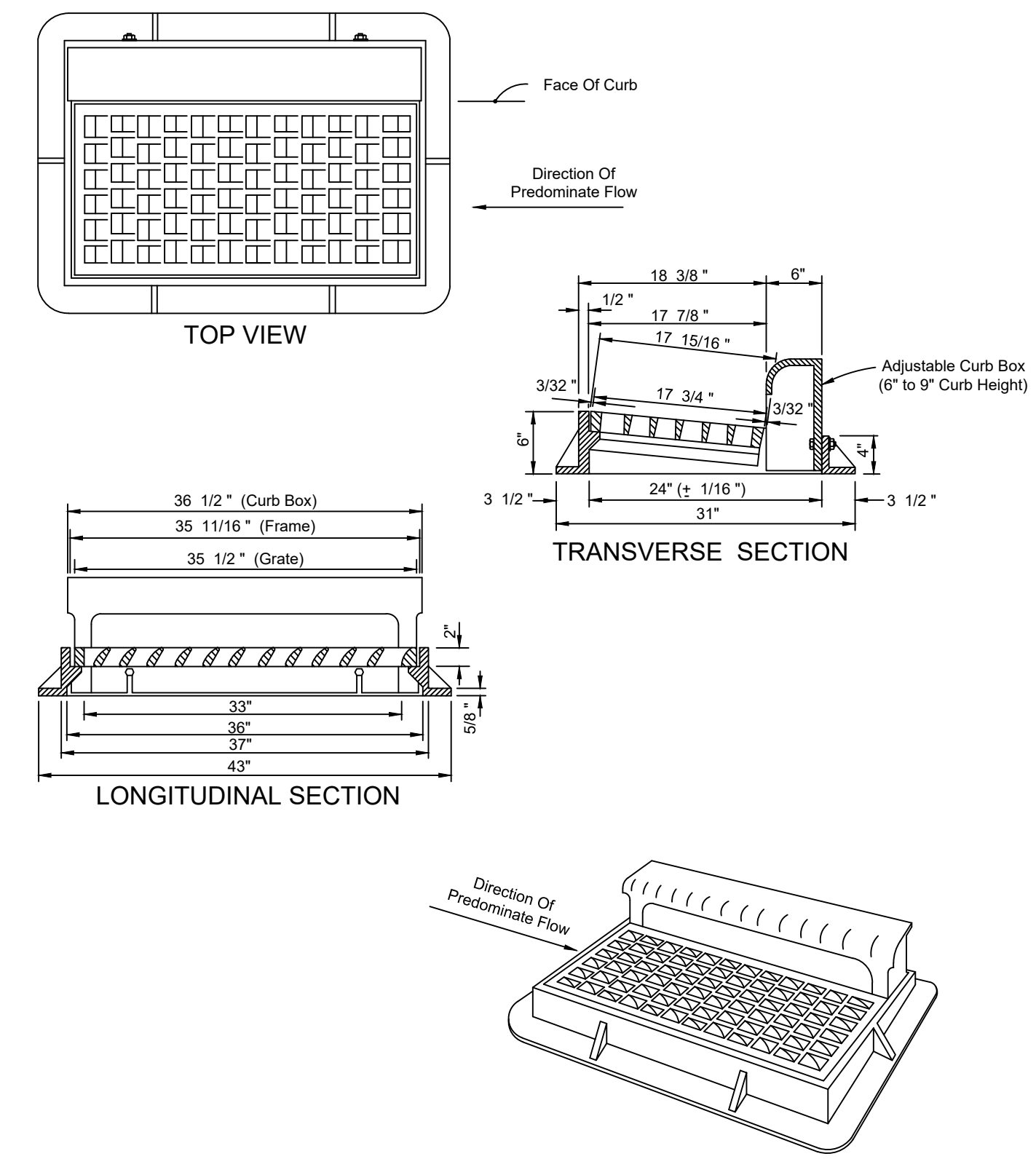
TYPICAL STREET STRIPING DETAIL



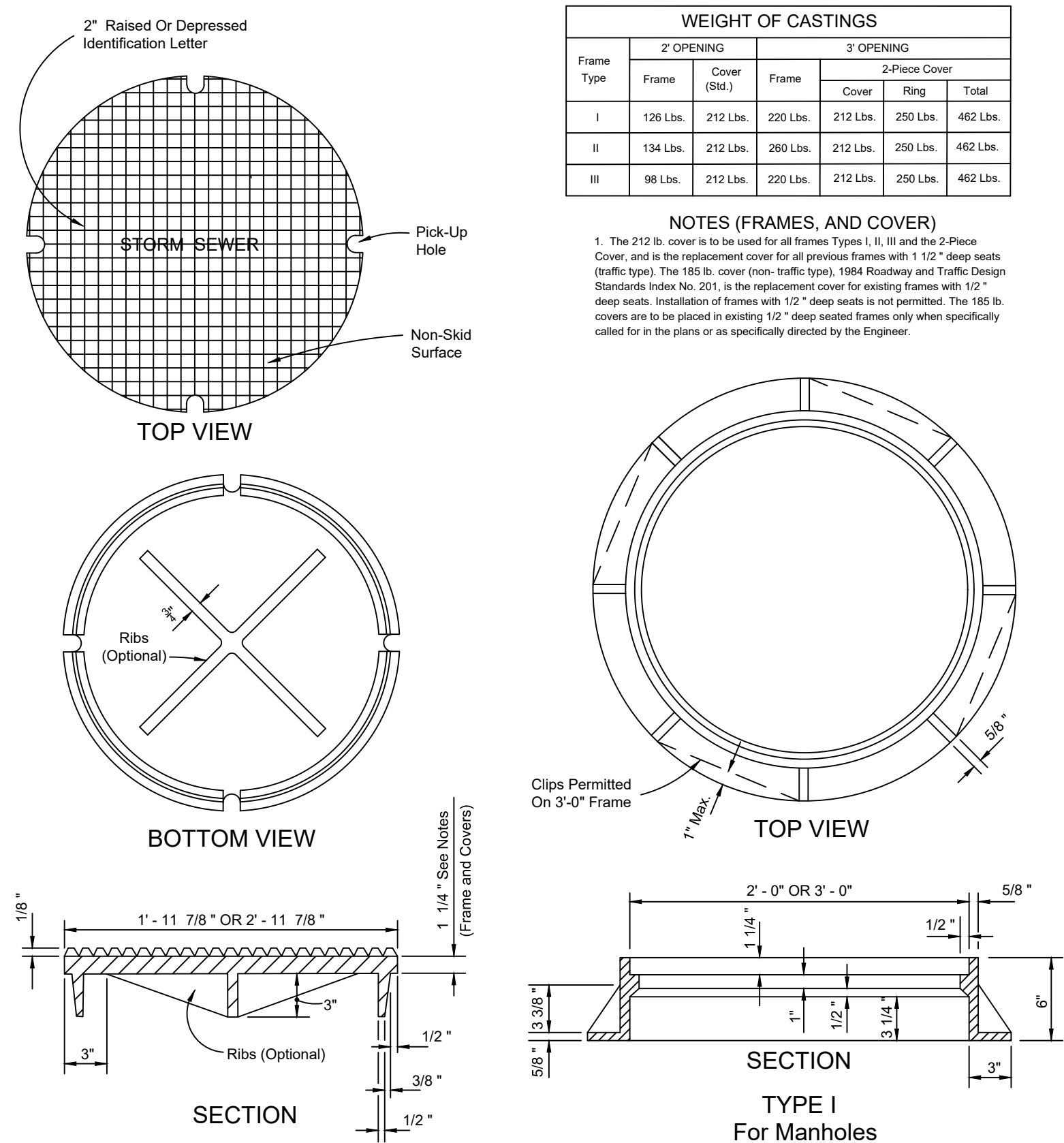
GENERAL NOTES

- These inlets are suitable for bicycle and pedestrian areas and are to be used in ditches, medians and other areas subject to infrequent traffic loadings but are not to be placed in areas subject to any heavy wheel loads.
- Inlets subject to minimal debris should be constructed without slots. Where debris is a problem inlets should be constructed with slots. Slotted inlets located within roadway clear zones and in areas accessible to pedestrians shall have traversable slots. The traversable slot modification is not adaptable to inlet Type H. Slots may be constructed at either or both ends as shown on plans.
- Steel grates are to be used on all inlets where bicycle traffic is anticipated. Steel grates are to be used on all inlets with traversable slots. Either cast iron or steel grates may be used on inlets without slots where bicycle traffic is not anticipated. Either cast iron or steel grates may be used on all inlets with non-traversable slots. Subject to the selection described above, when Alternate G grate is specified in the plans, either the steel grate, hot dipped galvanized after fabrication, or the cast iron grate may be used, unless the plans stipulate the particular type.
- Recommended maximum pipe sizes shown are for concrete pipe. Pipe sizes larger than those recommended must be checked for fit.
- All exposed corners and edges of concrete are to be chamfered 3/4".
- Pavement to be used on inlets without slots and inlets with non-traversable slots only when called for in the plans, but required on all traversable slot inlets. Cost to be included in contract unit price for inlets. Quantities shown are for information only.
- Traversable slots constructed in existing inlets shall be paid for as inlets partial, and shall include the cost for slot openings, paving and any required replacement grates.
- Sodding to be used on all inlets not located in paved areas and paid for under contract unit price for Sodding SY.
- For supplementary details see F.D.O.T. Specifications Index No. 201.

TYPE "C" INLET DETAIL



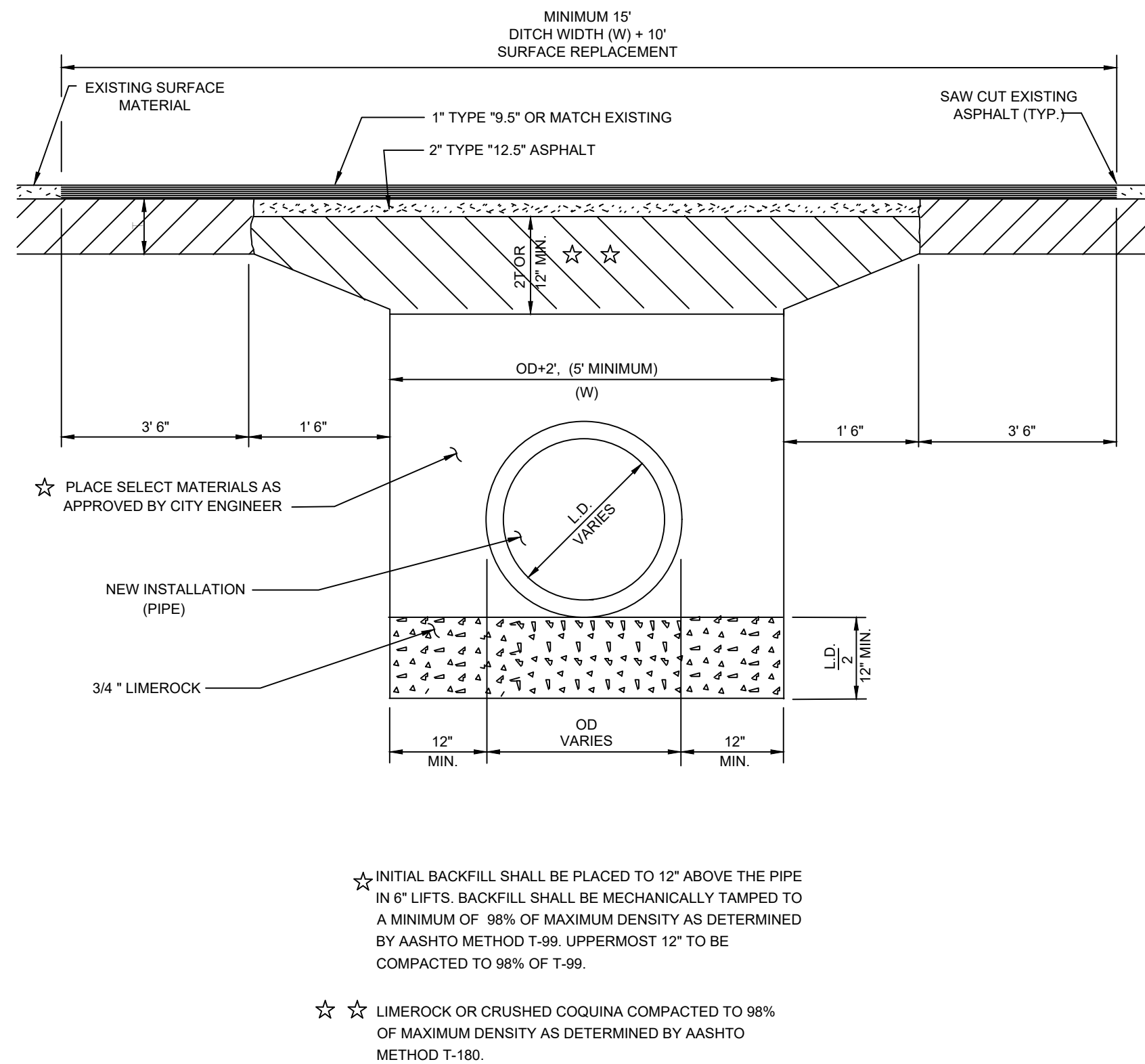
CURB INLET FRAME AND GRATE DETAIL



Frame Type	2' OPENING			3' OPENING		
	Frame	Cover (Std.)	2-Piece Cover	Frame	Cover	Total
I	126 Lbs.	212 Lbs.	220 Lbs.	212 Lbs.	250 Lbs.	462 Lbs.
II	134 Lbs.	212 Lbs.	260 Lbs.	212 Lbs.	250 Lbs.	462 Lbs.
III	98 Lbs.	212 Lbs.	220 Lbs.	212 Lbs.	250 Lbs.	462 Lbs.

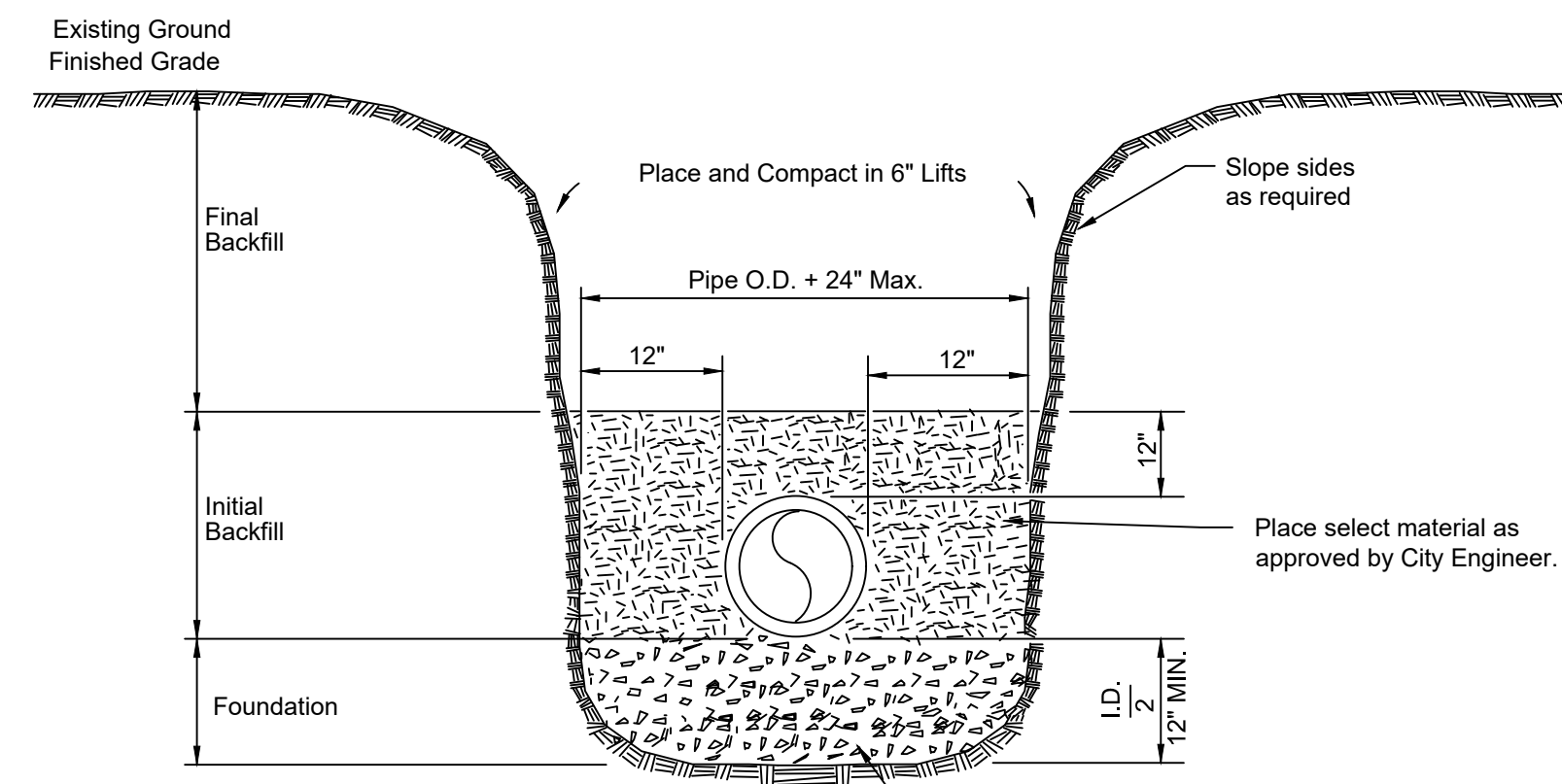
- NOTES (FRAMES, AND COVER)**
- The 212 lb. cover is to be used for all frames Types I, II, III and the 2-Piece Cover, and is the replacement cover for all previous frames with 1 1/2" deep seats (traffic type). The 185 lb. cover (non-traffic type), 1984 Roadway and Traffic Design Standards Index No. 201, is the replacement cover for existing frames with 1 1/2" deep seats. Installation of frames with 1 1/2" deep seats is not permitted. The 185 lb. covers are to be placed in existing 1 1/2" deep seated frames only when specifically called for in the plans or as specifically directed by the Engineer.

MANHOLE COVER DETAIL



- ★ INITIAL BACKFILL SHALL BE PLACED TO 12" ABOVE THE PIPE IN 6" LIFTS. BACKFILL SHALL BE MECHANICALLY TAMPED TO A MINIMUM OF 98% OF MAXIMUM DENSITY AS DETERMINED BY AASHTO METHOD T-99. UPPERMOST 12" TO BE COMPACTED TO 98% OF T-99.
- ★ ★ LIMEROCK OR CRUSHED COQUINA COMPACTED TO 98% OF MAXIMUM DENSITY AS DETERMINED BY AASHTO METHOD T-180.

PAVEMENT RESTORATION DETAIL WITH TRENCH



General Construction Notes:

- All trenching shall comply with the requirements of the Florida Trench Safety Act.
- Foundation - 3/4" LIMEROCK a minimum of 12" in depth.
- Initial backfill - The material placed to 12" above the pipe shall be placed in six inch layers and compacted with mechanical tampers to at least 95% maximum density as determined by AASHTO T-99.
- Final Backfill - To be placed in layers not to exceed one foot in thickness and compacted with appropriate equipment to at least 95% maximum density as determined by AASHTO T-99.

TYPICAL TRENCH DETAIL

SOUTH 7TH STREET IMPROVEMENTS
(10TH STREET TO WENDELL ROAD)
DETAILS



CITY OF FORT PIERCE
DEPARTMENT OF ENGINEERING
100 NORTH U.S. 1 P.O. BOX 1480
FORT PIERCE FLORIDA, 34954

DATE: MAY 2017	SCALE: N.T.S.
SURVEY BY: C.BLACKWELDER	DRAWN BY: D.SUMNER
DESIGNED BY: T.TELLE	APPROVED BY: J.ANDREWS

No.	DATE	BY	REVISIONS
1	3/15/19	DAS	REV. PER J.R.A.

PROJECT No. SOUTH 7TH	SHEET No. 7 OF 7
DRAWING No.	