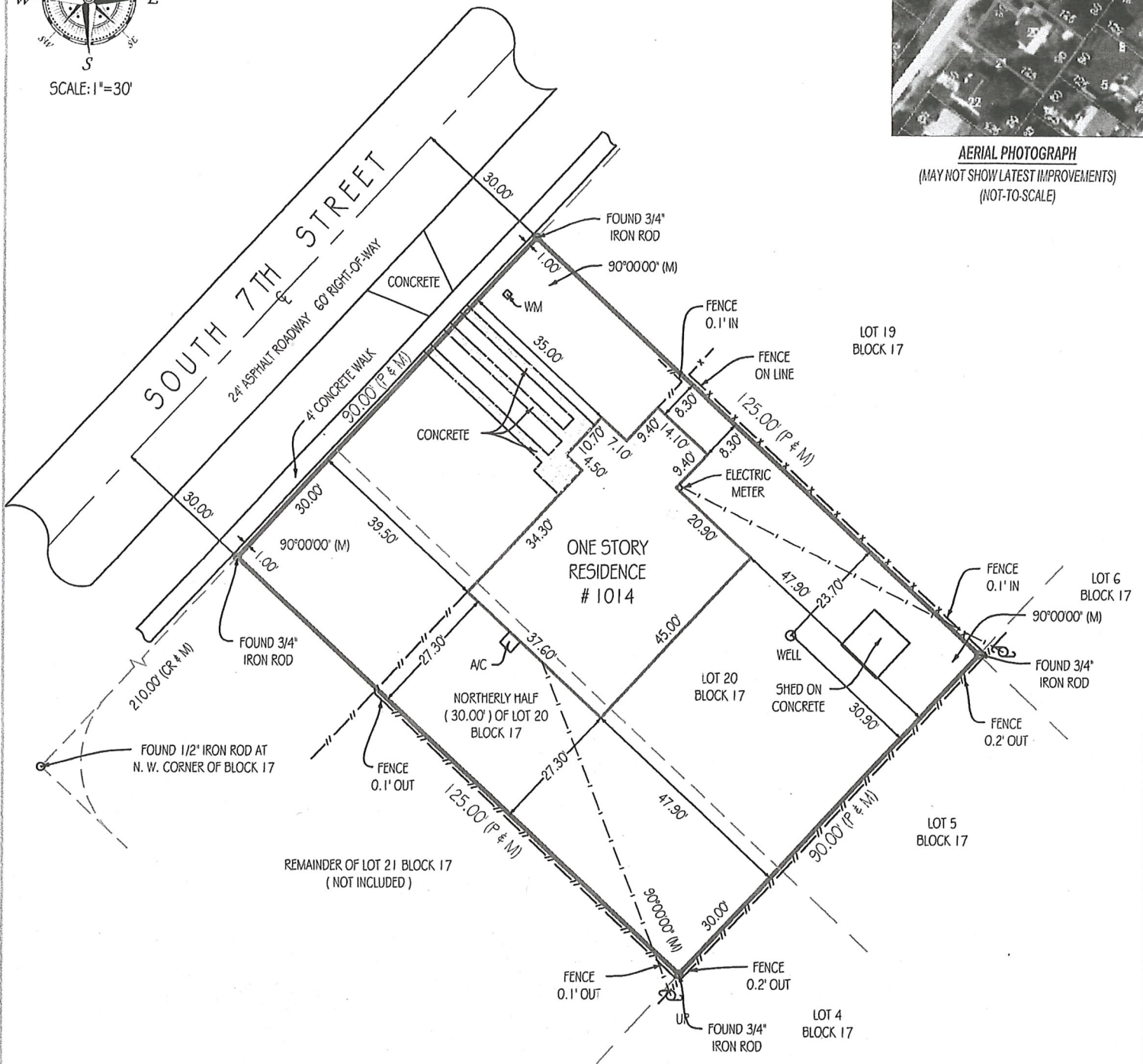


BEARING REFERENCE:
 NONE. RECORD INFORMATION RELIANT UPON ANGULAR DATA ONLY.
 ALL ANGULAR DATA SHOWN HEREON REFERENCED THERETO.



AERIAL PHOTOGRAPH
 (MAY NOT SHOW LATEST IMPROVEMENTS)
 (NOT-TO-SCALE)



Platted Easements, Notable or Adverse Conditions (unplatted easements also listed if provided by client):
 EVIDENCE OF A UTILITY EASEMENT ALONG WESTERLY PROPERTY LINE (WATER METER)

This survey has been issued by the following Landtec Surveying office:
 600 Fairway Drive - Ste. 101
 Deerfield Beach, FL. 33441
 Office: (561) 367-3587 Fax: (561) 465-3145
 www.LandtecSurvey.com

PLEASE NOTE:
 SUBJECT PROPERTY IS SERVICED BY PUBLIC UTILITIES.
 NO APPROVAL FOR CONSTRUCTION HAS BEEN MADE BY THIS OFFICE.

Job Number : 87558-SE	Rev.:
Drawn By : B. ZAB	Rev.:
Date of Field Work : 02/13/2018	Rev.:

LANDTEC
 SURVEYING
 Proudly Serving Florida's Land Title & Real Estate Industries
... measurably better!