

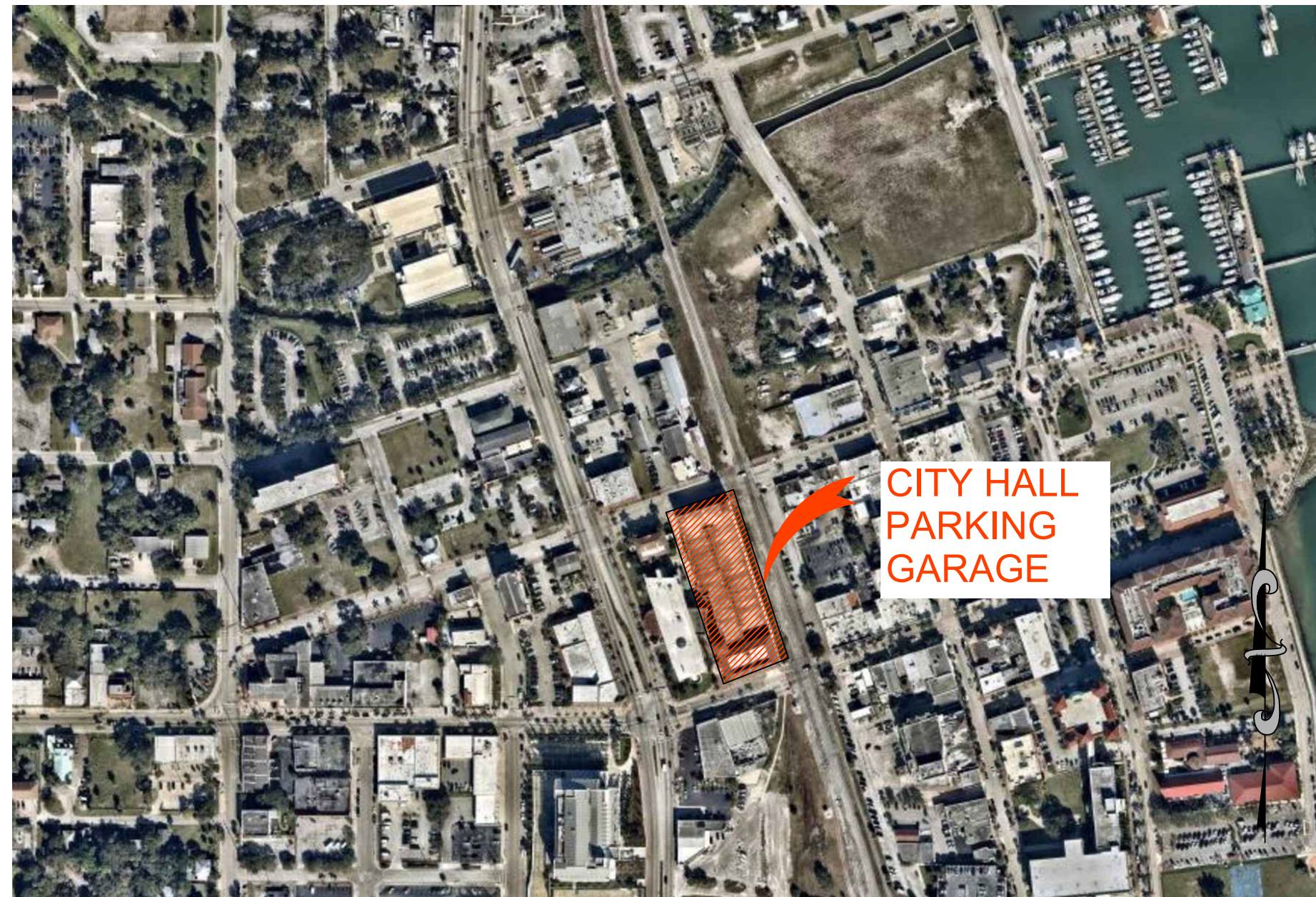


# CITY OF FT. PIERCE

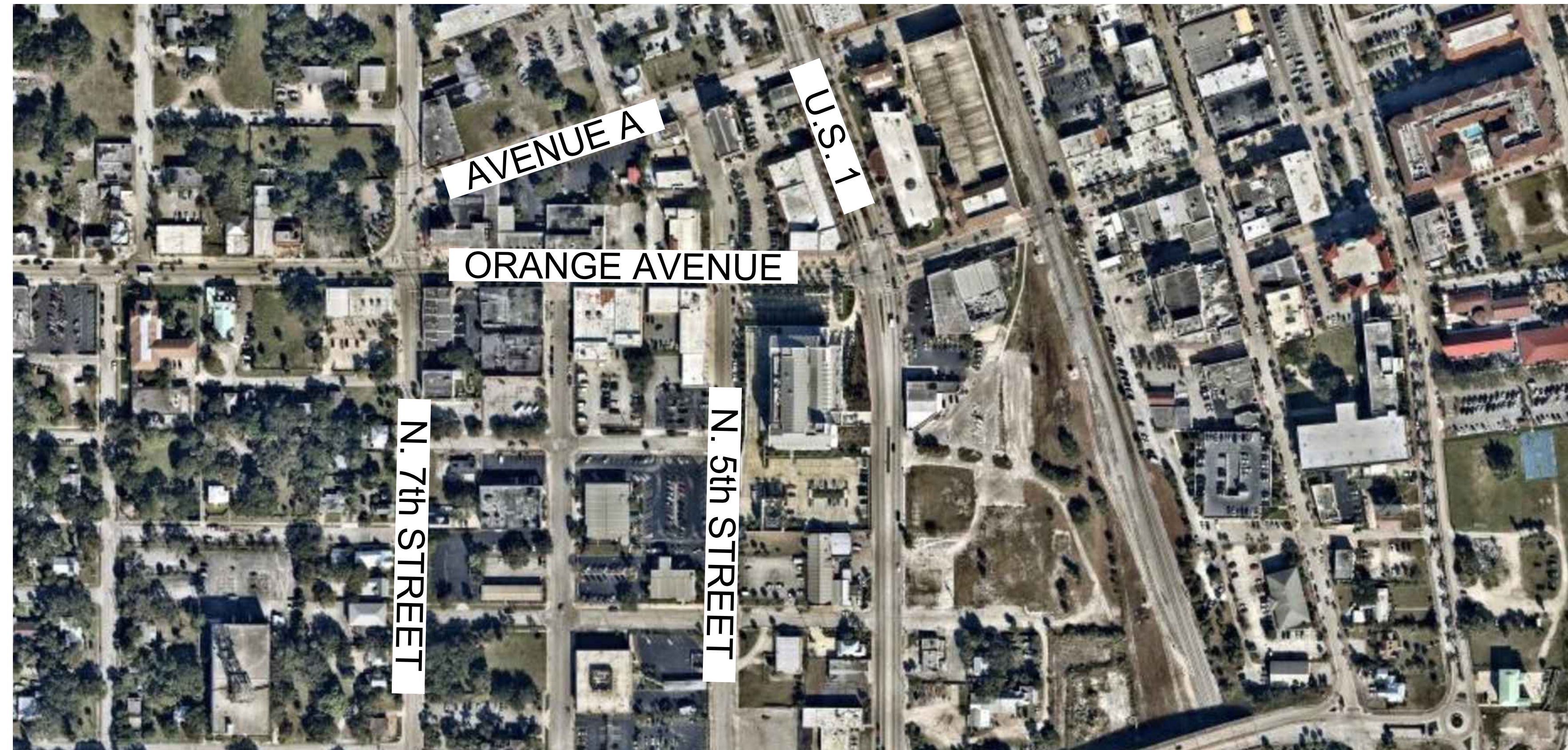
100 Highway U.S. 1  
Fort Pierce, Florida 34950

## CITY HALL PARKING GARAGE RESTORATION BID SET

May 31, 2019



LOCATION MAP  
N.T.S.



SITE MAP  
N.T.S.

### PROJECT TEAM

#### OWNER'S AGENT

City of Ft. Pierce  
CONTACT: TRACY TELLE  
100 Highway U.S. 1  
FT. PIERCE, FL 39450  
P: 772.467.3776  
ttelle@city-ftpierce.com

#### STRUCTURAL ENGINEER

**KIMLEY-HORN AND ASSOCIATES, INC**  
CONTACT: HANNIAH RODRIGUEZ, P.E.  
1920 WEKIVA WAY, SUITE 200  
WEST PALM BEACH, FL 33411  
P: 561.840.0203  
hannah.rodriguez@kimley-horn.com  
  
CONTACT: MARK SANTOS, P.E.  
600 NORTH PINE ISLAND ROAD, SUITE 450  
PLANTATION, FL 33324  
P: 954.535.5129  
mark.santos@kimley-horn.com

### DRAWING INDEX

#### GENERAL

G-001 COVER SHEET

#### STRUCTURAL

S-001 GENERAL NOTES  
S-002 GENERAL NOTES  
  
S-101 LEVEL 1 GENERAL REPAIR PLAN  
S-102 LEVEL 2 GENERAL REPAIR PLAN  
S-103 LEVEL 3 GENERAL REPAIR PLAN  
S-104 LEVEL 4 GENERAL REPAIR PLAN  
S-105 LEVEL 5 GENERAL REPAIR PLAN  
S-106 LEVEL 4 DOUBLE TEE CONNECTION REPAIR PLAN  
S-107 LEVEL 5 DOUBLE TEE CONNECTION REPAIR PLAN  
  
S-500 CONCRETE REPAIR DETAILS  
S-501 JOINT SEALANT DETAILS  
S-502 STRIPING DETAILS  
S-503 DOUBLE TEE CONNECTION REPAIR DETAILS  
S-504 MISCELLANEOUS DETAILS

Project: B:\Data\Level\Sheet Set\1919\1919-001 COVER SHEET - May 31, 2019 02:55:27pm  
 \\\hib01\users\jrobert\1919\1919-001 COVER SHEET - May 31, 2019 02:55:27pm  
 This document, together with the concepts and design presented herein, is intended only for the specific purpose and client for which it was prepared. Reuse or other use without the written authorization and approval of Kimley-Horn and Associates, Inc. shall be without liability to Kimley-Horn and Associates, Inc.

No.	REVISIONS	DATE	BY

**Kimley»Horn**

© 2019 KIMLEY-HORN AND ASSOCIATES, INC.  
600 NORTH PINE ISLAND ROAD, SUITE 450, PLANTATION, FL 33324  
PHONE: 954-535-5100  
WWW.KIMLEY-HORN.COM CA 00000696

KHA PROJECT	147922021
DATE	5/31/2019
SCALE	AS SHOWN
DESIGNED BY	HLR
DRAWN BY	LD
CHECKED BY	MNS

**CITY HALL  
GARAGE RESTORATION**

PREPARED FOR  
City of Ft. Pierce

ST. LUCIE COUNTY FLORIDA

LICENSED PROFESSIONAL	HANNIAH RODRIGUEZ, P.E.
FLORIDA LICENSE NUMBER	86955
DATE:	5/31/2019

**COVER SHEET**

SHEET NUMBER	G-001
--------------	-------

**STRUCTURAL GENERAL NOTES**

NOTES ON THE CONSTRUCTION DRAWINGS ARE PART OF THE PROJECT REQUIREMENTS, BUT ARE NOT INTENDED TO REPLACE THE PROJECT SPECIFICATIONS. IN CASE OF CONFLICTS BETWEEN THE REQUIREMENTS OF THE SPECIFICATIONS AND CONSTRUCTION DRAWINGS, THE MORE STRINGENT REQUIREMENT SHALL APPLY. IMMEDIATELY CONTACT THE ENGINEER IF A CONFLICT WITHIN THE CONTRACT DOCUMENTS HAS BEEN IDENTIFIED.

THE SCOPE OF WORK AND ANTICIPATED QUANTITIES SPECIFIED IN THESE CONSTRUCTION DOCUMENTS ARE BASED ON VISUAL OBSERVATIONS AND NON-DESTRUCTIVE TEST METHODS PERFORMED BY THE ENGINEER. REPAIR DETAILS PROVIDED IN THESE CONSTRUCTION DOCUMENTS REPRESENT REPAIR TYPES REQUIRED FOR DAMAGED ELEMENTS OBSERVED.

**1.00 DOCUMENTS AND LIMITATIONS**

- 1.01 THE DRAWINGS, CALCULATIONS, SPECIFICATIONS, AND REPRODUCTIONS ARE INSTRUMENTS OF SERVICE TO BE USED ONLY FOR THIS PROJECT.
- 1.02 IT IS UNDERSTOOD THAT THE STRUCTURAL ENGINEER OF RECORD MAKES NO WARRANTY, EITHER EXPRESSED OR IMPLIED, AS TO FINDINGS, DESIGNS, RECOMMENDATIONS, SPECIFICATIONS, OPINION, OR PROFESSIONAL ADVICE, EXCEPT THAT THESE INSTRUMENTS OF SERVICE HAVE BEEN PREPARED IN ACCORDANCE WITH THE CURRENT GENERALLY ACCEPTED PROFESSIONAL ENGINEER PRACTICES.
- 1.03 ALL EXISTING INFORMATION INDICATED ON THE CONSTRUCTION DRAWINGS HAS BEEN PROVIDED BY OTHERS, AND SHOULD NOT BE ASSUMED TO BE ACCURATE. CONTRACTOR IS RESPONSIBLE FOR FIELD VERIFYING DIMENSIONS AND LOCATIONS OF ANY EXISTING ELEMENTS AS NECESSARY TO COMPLETE THE SCOPE OF WORK.

**2.00 CONSTRUCTION SAFETY**

- 2.01 IT IS UNDERSTOOD THAT THE CONTRACTOR IS SOLELY RESPONSIBLE FOR INITIATING, MAINTAINING, AND SUPERVISING ALL SAFETY PRECAUTIONS AND PROGRAMS IN CONNECTION WITH THE WORK ON THE PROJECT. THE CONTRACTOR SHALL TAKE ALL NECESSARY PRECAUTIONS FOR THE SAFETY OF THE PERSONS AND PROTECT THEM AGAINST INJURY. LIKEWISE, THE CONTRACTOR SHALL PROTECT ALL PROPERTY AGAINST DAMAGE OR LOSS.
- 2.02 THE CONTRACTOR SHALL COMPLY WITH ALL APPLICABLE LAWS, ORDINANCES, RULES, REGULATIONS, AND ORDERS OF ANY PUBLIC BODY HAVING JURISDICTION FOR THE SAFETY OF PERSONS OR PROPERTY.
- 2.03 THE CONTRACTOR'S DUTIES AND RESPONSIBILITIES FOR THE SAFETY AND PROTECTION OF THE WORK SHALL CONTINUE UNTIL SUCH TIME AS THE WORK IS SATISFACTORILY COMPLETED, AND THE ENGINEER HAS ISSUED A NOTICE TO THAT EFFECT TO THE OWNER AND THE CONTRACTOR.

**3.00 FORMWORK, SHORING, AND RESHORING**

- 3.01 THE CONTRACTOR SHALL EMPLOY, AT HIS EXPENSE, A FORMWORK/SHORING ENGINEER REGISTERED IN FLORIDA TO CONTROL ALL OPERATIONS RELATING TO DESIGN, INSTALLATION AND REMOVAL OF ALL FORMWORK, SHORING AND RESHORING.
- 3.02 CONTRACTOR SHALL SUBMIT SHOP DRAWINGS FOR FABRICATION, ERECTION, SUPPORT, AND BRACING OF FORMWORK, AND SHORING AND RESHORING PROCEDURES FOR THE ENGINEER'S RECORDS.
- 3.03 PRIOR TO PLACEMENT OF CONCRETE, THE FORMWORK/SHORING ENGINEER NEEDS TO INSPECT THE SHORING AFTER THE FIRST POUR TO VERIFY THAT THE SHORING INSTALLATION IS IN CONFORMANCE WITH THE SHORING SHOP DRAWINGS. IF ANY CHANGES ARE MADE TO THE METHOD OF SHORING DURING CONSTRUCTION, THE SHORING ENGINEER MUST INSPECT THE FIRST POUR AREA SUPPORTED BY THE CHANGED SHORING METHOD PRIOR TO PLACEMENT OF CONCRETE. A WRITTEN STATEMENT OF COMPLIANCE SIGNED BY THE SHORING ENGINEER SHALL BE SUBMITTED TO THE OWNER.

**4.00 DIMENSIONS**

- 4.01 BEFORE STARTING WORK, THE CONTRACTOR SHALL FIELD VERIFY ALL DIMENSIONS ON THE SITE, AND REPORT ANY DISCREPANCIES IMMEDIATELY TO THE ENGINEER PRIOR TO BEGINNING WORK.
- 4.02 THE CONTRACTOR, BEFORE STARTING ANY WORK, SHALL CHECK ALL DIMENSIONS GIVEN ON THE DRAWINGS, RELATING TO GRID LINES, COLUMN AND WALL LOCATIONS, STRUCTURAL AND FINISHED FLOOR ELEVATIONS, MEMBER SIZES, ETC. WITH EXISTING CONDITIONS. IF ANY DISCREPANCY IS IDENTIFIED, IT SHALL BE IMMEDIATELY BROUGHT TO THE ATTENTION OF THE ENGINEER, AND WORK SHALL NOT COMMENCE UNTIL INSTRUCTIONS ARE RECEIVED FROM THE ENGINEER.
- 4.03 THE CONTRACTOR SHALL SUBMIT A REQUEST FOR INFORMATION (RFI) FOR ANY DIMENSIONS NOT GIVEN ON OR OBTAINABLE FROM THE DRAWINGS. THE CONTRACTOR SHALL NOT USE SCALE TO OBTAIN OR VERIFY ANY DIMENSION SHOWN ON THESE DRAWINGS, EVEN WHERE A SCALE IS PROVIDED.

**5.00 SHOP DRAWINGS**

- 5.01 REVIEW OF SHOP DRAWINGS BY THE ENGINEER IS LIMITED TO COMPLIANCE OF THE COMPLETED STRUCTURE WITH THE DESIGN CONCEPT AND INFORMATION GIVEN IN THE CONTRACT DOCUMENTS. THE CONTRACTOR IS SOLELY RESPONSIBLE FOR DIMENSIONS, QUANTITIES, PERFORMANCE, SAFETY, COORDINATION WITH OTHER WORKS, AND ALL OTHER REQUIREMENTS OF THE CONTRACT DOCUMENTS. REVIEW DOES NOT AUTHORIZE CHANGES TO CONTRACT.
- 5.02 THE CONTRACTOR SHALL SUBMIT SHOP DRAWINGS TO THE ENGINEER FOR HIS REVIEW IN ACCORDANCE WITH A SCHEDULE OF SUBMITTALS ACCEPTABLE TO THE ENGINEER. THESE SHOP DRAWINGS SHALL HAVE BEEN CHECKED BY, AND STAMPED WITH THE APPROVAL OF THE CONTRACTOR, AND IDENTIFIED AS THE ENGINEER MAY REQUIRE. THE DATA SHOWN ON THE SHOP DRAWINGS SHALL BE COMPLETE WITH RESPECT TO DIMENSIONS, DESIGN CRITERIA, AND DULY SIGNED AND SEALED BY A PROFESSIONAL ENGINEER IN FLORIDA.

**6.00 POST-INSTALLED ANCHORS**

- 6.01 UNLESS OTHERWISE INDICATED ON PLANS, POST-INSTALLED ANCHORS SHALL CONSIST OF THE FOLLOWING ANCHOR TYPES, OR APPROVED EQUAL:

	ADHESIVE ANCHOR	MECHANICAL ANCHOR
SOLID CONCRETE	HILTI RE 500v3 SAFE SET SYSTEM HILTI HY 200 SAFE SET SYSTEM	HILTI KWIK HUS EZ HILTI KWIK BOLT TZ
GROUTED MASONRY	HILTI HY 70	HILTI KWIK BOLT 3
HOLLOW MASONRY OR BRICK	HILTI HY 70 WITH APPROPRIATE SCREEN TUBE	HILTI HLC SLEEVE ANCHOR

- 6.02 SUBSTITUTION REQUESTS FOR ALTERNATE PRODUCTS MUST BE APPROVED IN WRITING BY THE STRUCTURAL ENGINEER OF RECORD PRIOR TO USE. CONTRACTOR SHALL PROVIDE CALCULATIONS DEMONSTRATING THAT THE SUBSTITUTED PRODUCT IS CAPABLE OF ACHIEVING THE PERFORMANCE VALUES OF THE SPECIFIED PRODUCT. SUBSTITUTIONS WILL BE EVALUATED BY THEIR HAVING AN ICC ESR SHOWING COMPLIANCE WITH THE RELEVANT AND CURRENT BUILDING CODE.
- 6.03 INSTALL ANCHORS PER THE MANUFACTURER INSTRUCTIONS, AS INCLUDING IN THE ANCHOR PACKAGING.
- 6.04 THE CONTRACTOR SHALL ARRANGE AN ANCHOR MANUFACTURER'S REPRESENTATIVE TO PROVIDE ONSITE INSTALLATION TRAINING FOR ALL OF THEIR ANCHORING PRODUCTS SPECIFIED. THE STRUCTURAL ENGINEER OF RECORD MUST RECEIVE DOCUMENTED CONFIRMATION THAT ALL OF THE CONTRACTOR'S PERSONNEL WHO INSTALL ANCHORS ARE TRAINED PRIOR TO THE COMMENCEMENT OF INSTALLING ANCHORS.
- 6.05 ANCHOR CAPACITY IS DEPENDENT UPON SPACING BETWEEN ADJACENT ANCHORS AND PROXIMITY OF ANCHORS TO EDGE OF CONCRETE. INSTALL ANCHORS IN ACCORDANCE WITH SPACING AND EDGE CLEARANCES INDICATED ON THE DRAWINGS.
- 6.06 EXISTING REINFORCING BARS IN THE CONCRETE STRUCTURE MAY CONFLICT WITH SPECIFIC ANCHOR LOCATIONS. UNLESS NOTED ON THE DRAWINGS THAT THE BARS CAN BE CUT, THE CONTRACTOR SHALL REVIEW THE EXISTING STRUCTURAL DRAWINGS AND SHALL UNDERTAKE TO LOCATE THE POSITION OF THE REINFORCING BARS AT THE LOCATIONS OF THE CONCRETE ANCHORS. CONTRACTOR SHALL IMMEDIATELY CONTACT THE EOR IF A CONFLICT IS IDENTIFIED.

Ft Pierce City Hall Parking Garage Restoration						
Scope of Work						
REPAIR LIST				PRIORITY 1	PRIORITY 2	COMMENTS
Number	Item	Unit Price	Details	Year 1	Years 2-3	
				Quantity	Quantity	
<b>Structural</b>						
	<b>Concrete Repair</b>					
	FC Floor Cracks	LF	3/S-501	590	620	P1 - Levels 5-4, P2 - Levels 3-1
	FS Floor Spalls	SF	1/S-500	70		P1- All Levels
	OFS Overhead Floor Spalls	SF	2/S-500	40		P1- All Levels
	OER Overhead Exposed Rebar	SF	2/S-500	1		P1- All Levels
	WS Wall Spalls	SF	3/S-500	10		P1- All Levels
	BS Beam Spalls	SF	4/S-500	10		P1- All Levels
	DTR1 Main Precast Double Tee Connections 1	Each	1/S-503	64		P1 - On Levels 5 and 4 only
	DTR2 Main Precast Double Tee Connections 2	Each	2/S-503	60		P1 - On Levels 5 and 4 only
	DTR3 Precast Double Tee Connections to Panels	Each	3/S-503	116		P1 - On Levels 5 and 4 only
<b>Waterproofing</b>						
	<b>Sealants</b>					
	JS-DT Double Tee Joints (with concrete preparation)	LF	2/S-501	3,730	6,150	P1 - Levels 5-4, P2 - Levels 3-2
	TJ Tooled Joints	LF	2/S-501	490	380	P1 - Levels 5-4, P2 - Levels 3-2
	VSL Vertical Sealants	LF	5/S-501	1,800	3,440	P1 - Levels 5-4, P2 - Levels 3-1
	HSL Horizontal Sealants (Wall)	LF	1/S-501	80	120	P1 - Levels 5-4, P2 - Levels 3-1
	<b>Cove Sealants</b>					
	CSL Cove Sealants	LF	4/S-501	2,050	4,390	P1 - Levels 5-4, P2 - Levels 3-1
	<b>Waterproofing</b>					
	DCR Deck Coating Replacement	SF		20		On Level 2 only. Per deck coating manufacturer recommendations.
	PW Powerwash Floor	SF	Note 16.00/S-002	50,850	120,750	P1 - Levels 5-4, P2 - Levels 3-1
	PS Penetrating Sealer	SF	Note 7.01/S-002	50,850	120,750	P1 - Levels 5-4, P2 - Levels 3-1
<b>Miscellaneous</b>						
	CC Column Caps	Each	2/S-504	12		P1 - On Levels 5 and 4 only
	AB Anchor bolts and Base Plate	Each	1/S-504	4		P1 - On Levels 5 and 4 only
	DRC Drainage System Cleaning	Lump Sum	Note 17.00/S-002	1.0		
	ST Striping	Space	8/S-502	150	340	P1 - Levels 5-4, P2 - Levels 3-1

Plotted By: Dima, Date: 02-26-2019 02:56:32pm, Path: \\V:\projects\2019\147922021\Ft Pierce City Hall Parking Garage Restoration\Drawings\02-26-2019\147922021.dwg, Sheet: S-001, General Notes, This document, together with the concepts and designs presented herein, is intended only for the specific purpose and client for which it was prepared. Repair of and improper reliance on this document without written authorization and approval by Kimley-Horn and Associates, Inc. shall be without liability to Kimley-Horn and Associates, Inc.

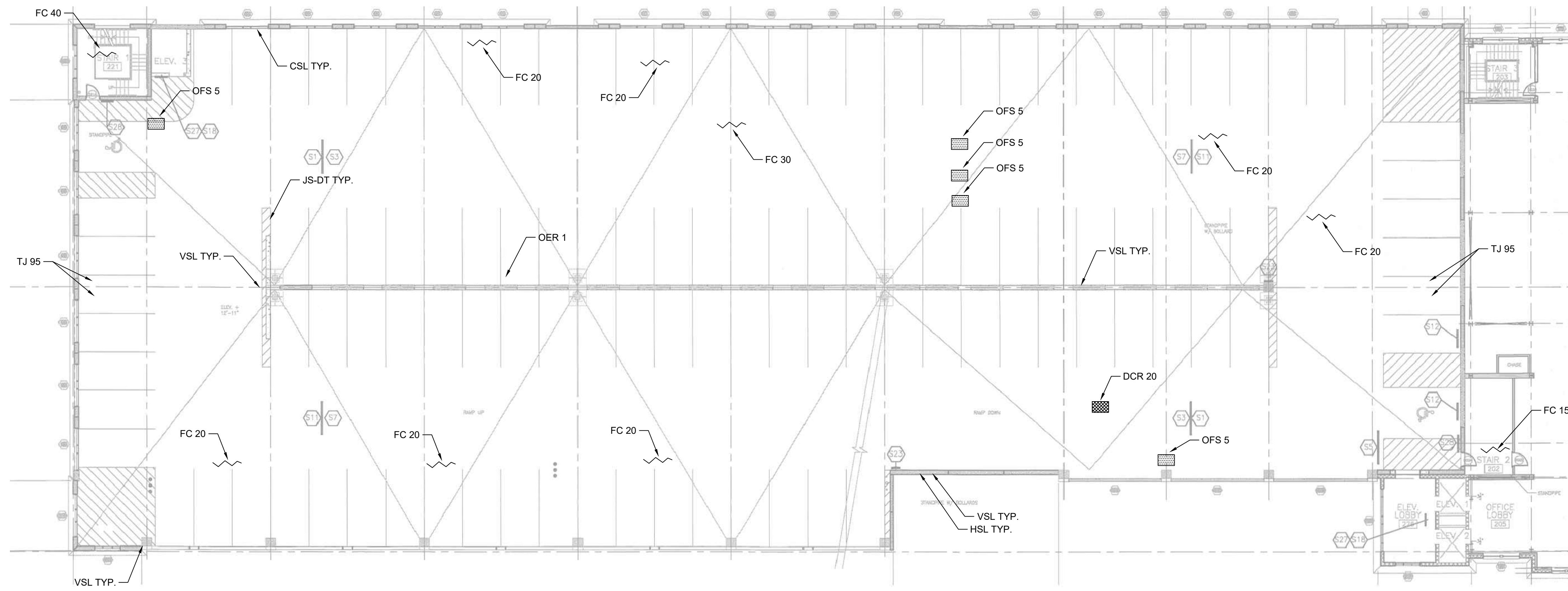
No.	REVISIONS	DATE	BY

 <p>© 2019 KIMLEY-HORN AND ASSOCIATES, INC. 600 NORTH PINE ISLAND ROAD, SUITE 450, PLANTATION, FL 33324 PHONE: 954-535-5100 WWW.KIMLEY-HORN.COM CA 00000696</p>	KHA PROJECT 147922021 DATE 5/31/2019 SCALE AS SHOWN DESIGNED BY HLR DRAWN BY LD CHECKED BY MNS	<b>CITY HALL GARAGE RESTORATION</b> PREPARED FOR City of Ft. Pierce	LICENSED PROFESSIONAL  HANNIAH RODRIGUEZ, P.E.  FLORIDA LICENSE NUMBER 86955	<b>GENERAL NOTES</b>	SHEET NUMBER  <b>S-001</b>
	FLORIDA DATE: 5/31/2019	FLORIDA	FLORIDA	FLORIDA	FLORIDA



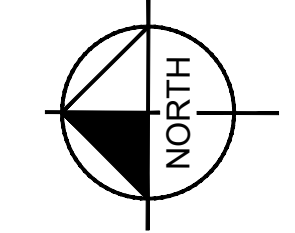


Project: B:\Data\Level2 - General Repair Plan - May 31, 2019 - 02:50:56pm  
 This document, together with the concepts and designs presented herein, is intended only for the specific purpose and client for which it was prepared. Reuse of and improper reliance on this document without written authorization and approval by Kimley-Horn and Associates, Inc. shall be without liability to Kimley-Horn and Associates, Inc.



REPAIR LEGEND			
SYMBOL	ID	TYPE	QTY
X-X		NAME	#
	FC	FLOOR CRACK	
	FS	FLOOR SPALL	
	OFS	OVERHEAD FLOOR SPALL	
	OER	OVERHEAD EXPOSED REBAR	
	WS	WALL SPALL	
	BS	BEAM SPALL	
	DTR1	DOUBLE TEE CONNECTION REPAIR 1	
	DTR2	DOUBLE TEE CONNECTION REPAIR 2	
	DTR3	DOUBLE TEE CONNECTION REPAIR 3	
	JS-DT	DOUBLE TEE JOINTS	
	TJ	TOOLED JOINTS	
	VSL	VERTICAL SEALANTS	
	HSL	HORIZONTAL SEALANTS (WALL)	
	CSL	COVE SEALANTS	
	DCR	DECK COATING REPLACEMENT	
	CC	COLUMN CAPS	
	AB	ANCHOR BOLTS AND BASE PLATE	

1
S-102
**LEVEL 2 GENERAL REPAIR PLAN**  
 SCALE: N.T.S.



No.	REVISIONS	DATE	BY

**Kimley»Horn**  
 © 2019 KIMLEY-HORN AND ASSOCIATES, INC.  
 600 NORTH PINE ISLAND ROAD, SUITE 450, PLANTATION, FL 33324  
 PHONE: 954-535-5100  
 WWW.KIMLEY-HORN.COM CA 00000696

KHA PROJECT	147922021
DATE	5/31/2019
SCALE	AS SHOWN
DESIGNED BY	HLR
DRAWN BY	LD
CHECKED BY	MNS

**CITY HALL**  
**GARAGE RESTORATION**  
 PREPARED FOR  
 City of Ft. Pierce  
 ST. LUCIE COUNTY FLORIDA

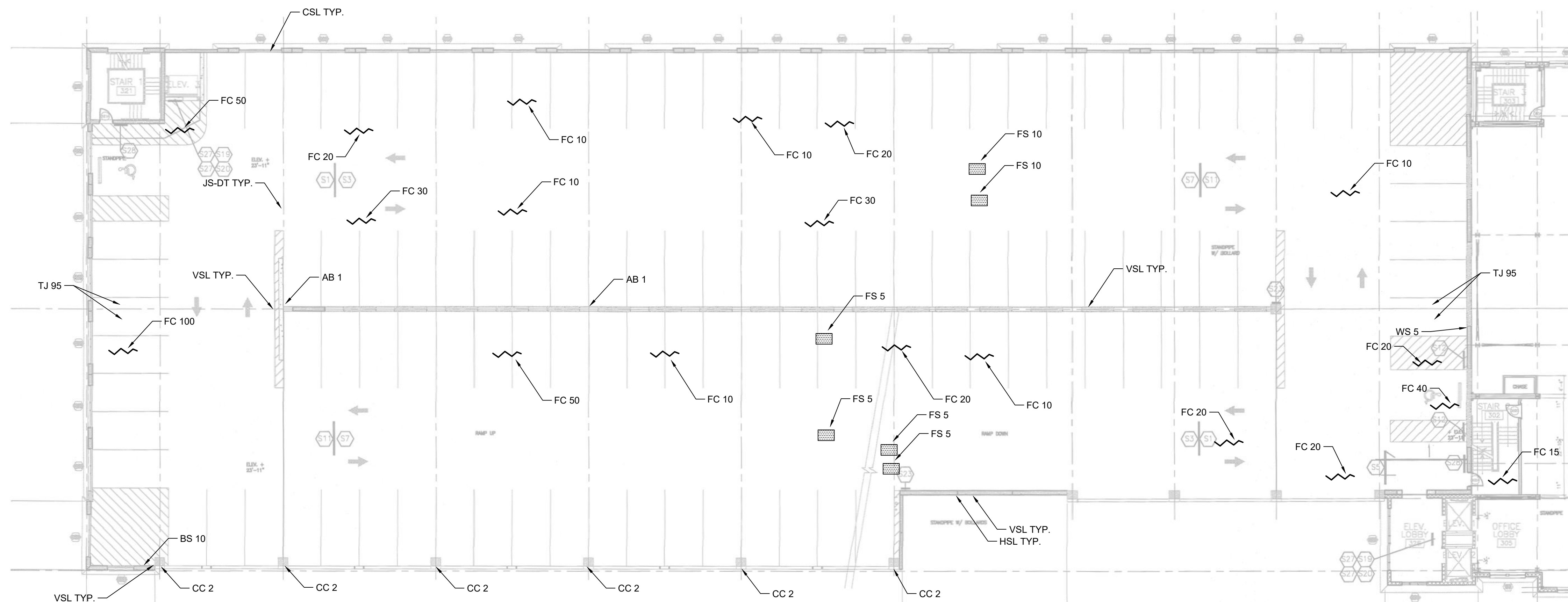
LICENSED PROFESSIONAL  
 HANNIAH RODRIGUEZ, P.E.  
 FLORIDA LICENSE NUMBER  
 86955  
 DATE: 5/31/2019

**LEVEL 2 GENERAL**  
**REPAIR PLAN**

SHEET NUMBER  
**S-102**

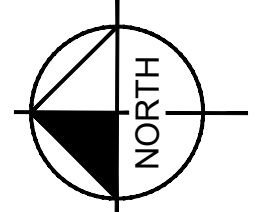


Project: B:\Data\Level 4 - GENERAL REPAIR PLAN - May 31, 2019 02:51:07pm  
 This document, together with the concepts and designs presented herein, is intended only for the specific purpose and client for which it was prepared. Reuse of and improper reliance on this document without written authorization and approval by Kimley-Horn and Associates, Inc. shall be without liability to Kimley-Horn and Associates, Inc.



REPAIR LEGEND			
SYMBOL	ID	TYPE	QTY
X-X		NAME	#
	FC	FLOOR CRACK	
	FS	FLOOR SPALL	
	OFS	OVERHEAD FLOOR SPALL	
	OER	OVERHEAD EXPOSED REBAR	
	WS	WALL SPALL	
	BS	BEAM SPALL	
	DTR1	DOUBLE TEE CONNECTION REPAIR 1	
	DTR2	DOUBLE TEE CONNECTION REPAIR 2	
	DTR3	DOUBLE TEE CONNECTION REPAIR 3	
	JS-DT	DOUBLE TEE JOINTS	
	TJ	TOOLED JOINTS	
	VSL	VERTICAL SEALANTS	
	HSL	HORIZONTAL SEALANTS (WALL)	
	CSL	COVE SEALANTS	
	DCR	DECK COATING REPLACEMENT	
	CC	COLUMN CAPS	
	AB	ANCHOR BOLTS AND BASE PLATE	

1
S-104
**LEVEL 4 GENERAL REPAIR PLAN**  
 SCALE: N.T.S.



No.	REVISIONS	DATE	BY

**Kimley»Horn**  
 © 2019 KIMLEY-HORN AND ASSOCIATES, INC.  
 600 NORTH PINE ISLAND ROAD, SUITE 450, PLANTATION, FL 33324  
 PHONE: 954-535-5100  
 WWW.KIMLEY-HORN.COM CA 00000696

KHA PROJECT	147922021
DATE	5/31/2019
SCALE	AS SHOWN
DESIGNED BY	HLR
DRAWN BY	LD
CHECKED BY	MNS

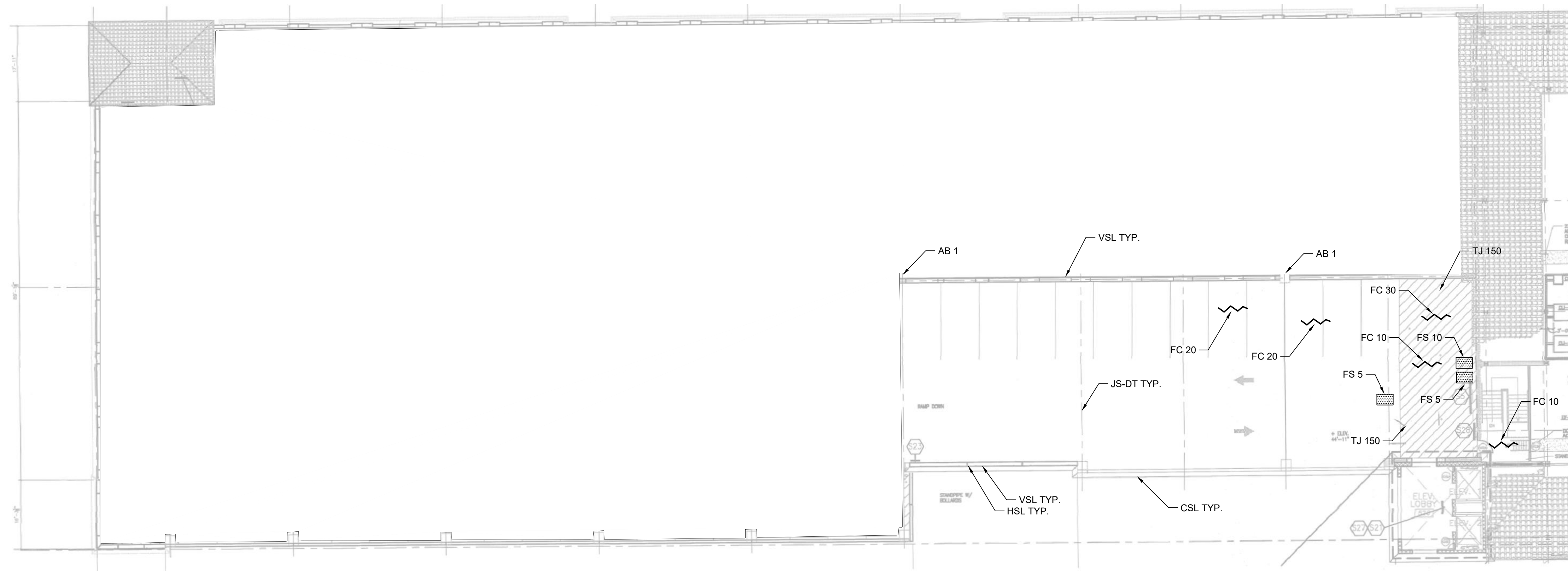
**CITY HALL**  
**GARAGE RESTORATION**  
 PREPARED FOR  
 City of Ft. Pierce  
 ST. LUCIE COUNTY FLORIDA

LICENSED PROFESSIONAL  
 HANNIAH RODRIGUEZ, P.E.  
 FLORIDA LICENSE NUMBER  
 86955  
 DATE: 5/31/2019

**LEVEL 4 GENERAL**  
**REPAIR PLAN**

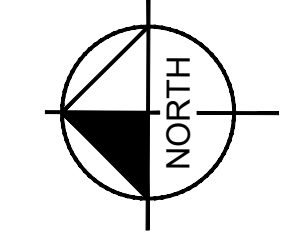
SHEET NUMBER  
**S-104**

P:\Projects\2019\Projects\City Hall Garage Restoration\Drawings\Level 5 Repair Plan.dwg  
 Plot Date: 5/31/2019 02:51:12pm  
 This document, together with the concepts and designs presented herein, is intended only for the specific purpose and client for which it was prepared. Reuse of and improper reliance on this document without written authorization and approval by Kimley-Horn and Associates, Inc. shall be without liability to Kimley-Horn and Associates, Inc.



REPAIR LEGEND			
SYMBOL	ID	TYPE NAME	QTY #
	FC	FLOOR CRACK	
	FS	FLOOR SPALL	
	OFS	OVERHEAD FLOOR SPALL	
	OER	OVERHEAD EXPOSED REBAR	
	WS	WALL SPALL	
	BS	BEAM SPALL	
	DTR1	DOUBLE TEE CONNECTION REPAIR 1	
	DTR2	DOUBLE TEE CONNECTION REPAIR 2	
	DTR3	DOUBLE TEE CONNECTION REPAIR 3	
	JS-DT	DOUBLE TEE JOINTS	
	TJ	TOOLED JOINTS	
	VSL	VERTICAL SEALANTS	
	HSL	HORIZONTAL SEALANTS (WALL)	
	CSL	COVE SEALANTS	
	DCR	DECK COATING REPLACEMENT	
	CC	COLUMN CAPS	
	AB	ANCHOR BOLTS AND BASE PLATE	

1 LEVEL 5 GENERAL REPAIR PLAN  
S-105 SCALE: N.T.S.



No.	REVISIONS	DATE	BY

**Kimley»Horn**  
 © 2019 KIMLEY-HORN AND ASSOCIATES, INC.  
 600 NORTH PINE ISLAND ROAD, SUITE 450, PLANTATION, FL 33324  
 PHONE: 954-535-5100  
 WWW.KIMLEY-HORN.COM CA 00000696

KHA PROJECT	147922021
DATE	5/31/2019
SCALE	AS SHOWN
DESIGNED BY	HLR
DRAWN BY	LD
CHECKED BY	MNS

CITY HALL  
 GARAGE RESTORATION  
 PREPARED FOR  
 City of Ft. Pierce  
 ST. LUCIE COUNTY FLORIDA

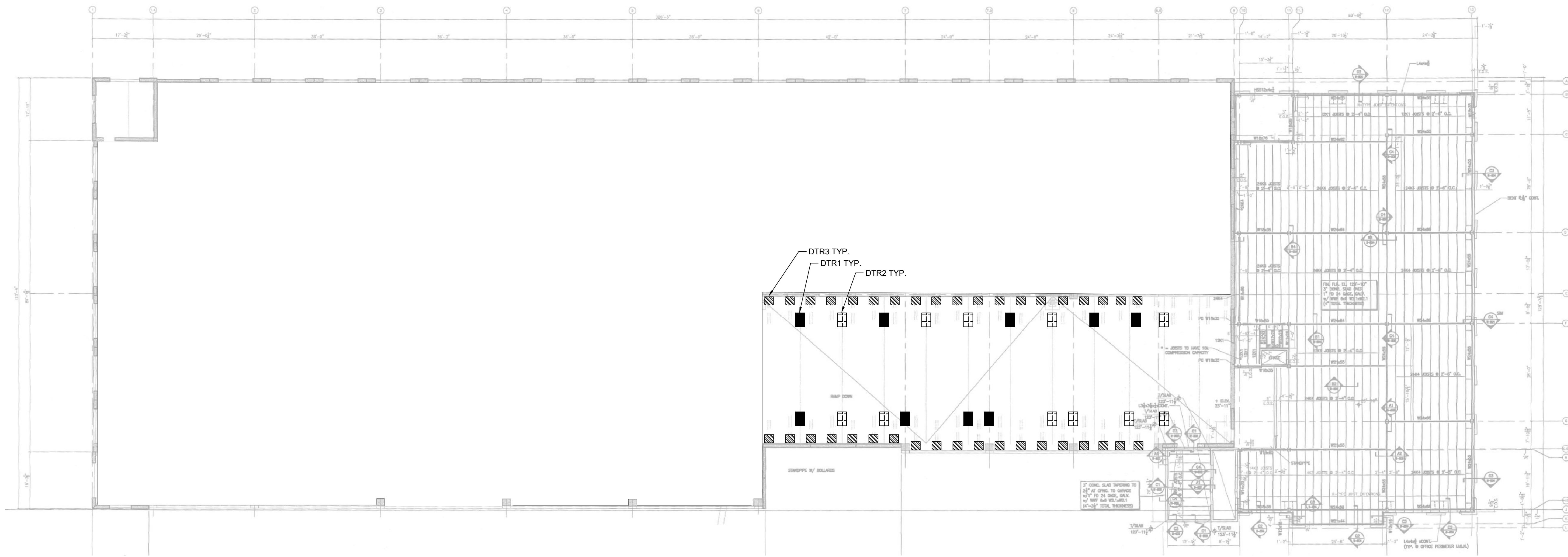
LICENSED PROFESSIONAL  
 HANNIAH RODRIGUEZ, P.E.  
 FLORIDA LICENSE NUMBER  
 86955  
 DATE: 5/31/2019

**LEVEL 5 GENERAL REPAIR PLAN**

SHEET NUMBER  
**S-105**

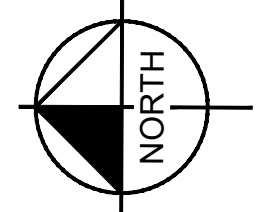


Project: B:\Dems\Level5\Sheet\Sheet\_S-107.dwg  
 Layout: S-107 LEVEL 5 DOUBLE TEE CONNECTIONS REPAIR PLAN  
 Date: 5/31/2019 02:51:22pm  
 Author: K:\VTL\_Parkland\A07922021\_Ft. Pierce City Hall Parking Garage Restoration\Doc\Plan\_Sheets\S-107 LEVEL 5 DT CONNECTIONS REPAIR PLAN.dwg  
 This document, together with the concepts and designs presented herein, is intended only for the specific purpose and client for which it was prepared. Reuse or improper reliance on this document without written authorization and approval by Kimley-Horn and Associates, Inc. shall be without liability to Kimley-Horn and Associates, Inc.



REPAIR LEGEND			
SYMBOL	ID	TYPE	QTY
X-X		NAME	#
	FC	FLOOR CRACK	
	FS	FLOOR SPALL	
	OFS	OVERHEAD FLOOR SPALL	
	OER	OVERHEAD EXPOSED REBAR	
	WS	WALL SPALL	
	BS	BEAM SPALL	
	DTR1	DOUBLE TEE CONNECTION REPAIR 1	
	DTR2	DOUBLE TEE CONNECTION REPAIR 2	
	DTR3	DOUBLE TEE CONNECTION REPAIR 3	
	JS-DT	DOUBLE TEE JOINTS	
	TJ	TOOLED JOINTS	
	VSL	VERTICAL SEALANTS	
	HSL	HORIZONTAL SEALANTS (WALL)	
	CSL	COVE SEALANTS	
	DCR	DECK COATING REPLACEMENT	
	CC	COLUMN CAPS	
	AB	ANCHOR BOLTS AND BASE PLATE	

1
S-107
**LEVEL 5 DT CONNECTIONS REPAIR PLAN**  
 SCALE: N.T.S.



NOTE: DOUBLE TEE CONNECTIONS SHOWN ARE APPROXIMATE LOCATIONS. CONTRACTOR TO VERIFY DOUBLE TEE CONNECTION LOCATIONS IN FIELD WITH ENGINEER ASSISTANCE AS REQUIRED.

No.	REVISIONS	DATE	BY

**Kimley»Horn**  
 © 2019 KIMLEY-HORN AND ASSOCIATES, INC.  
 600 NORTH PINE ISLAND ROAD, SUITE 450, PLANTATION, FL 33324  
 PHONE: 954-535-5100  
 WWW.KIMLEY-HORN.COM CA 00000696

KHA PROJECT	147922021
DATE	5/31/2019
SCALE	AS SHOWN
DESIGNED BY	HLR
DRAWN BY	LD
CHECKED BY	MNS

**CITY HALL**  
**GARAGE RESTORATION**  
 PREPARED FOR  
 City of Ft. Pierce  
 ST. LUCIE COUNTY FLORIDA

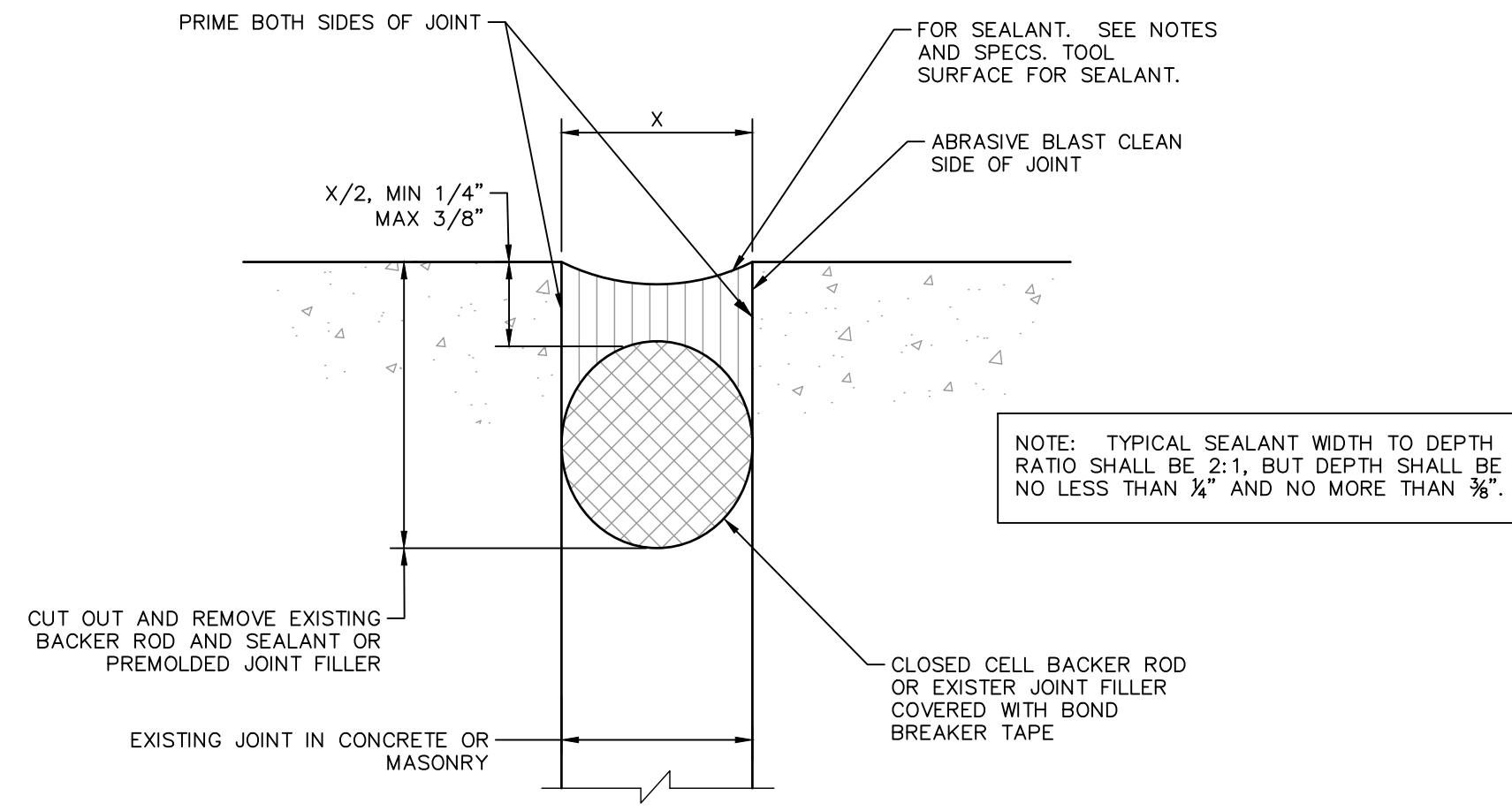
LICENSED PROFESSIONAL  
 HANNIAH RODRIGUEZ, P.E.  
 FLORIDA LICENSE NUMBER  
 86955  
 DATE: 5/31/2019

**LEVEL 5 DOUBLE TEE**  
**CONNECTIONS REPAIR**  
**PLAN**

SHEET NUMBER  
**S-107**

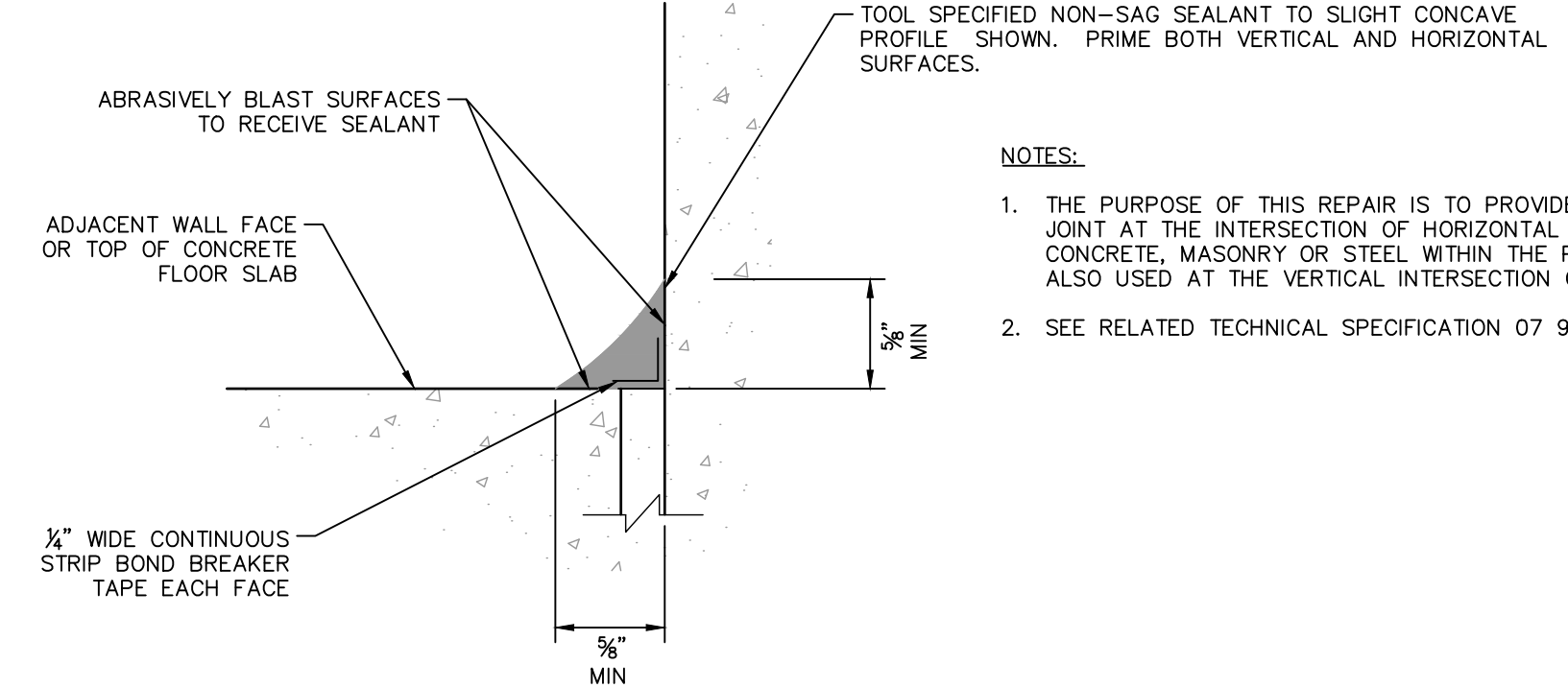


Project: B:\Dems\Leetal\Sheet\Details\501\JOINT SEALANT DETAILS.dwg  
 Layout: S-501\JOINT SEALANT DETAILS - May 31, 2019 03:11:17pm  
 A:\VTL\_Productions\041922021\_Ft Pierce City Hall Parking Garage Restoration\041922021\JOINT SEALANT DETAILS.dwg  
 This document, together with the concepts and designs presented herein, is intended only for the specific purpose and client for which it was prepared. Reuse or improper reliance on this document without written authorization and approval by Kimley-Horn and Associates, Inc. shall be without liability to Kimley-Horn and Associates, Inc.



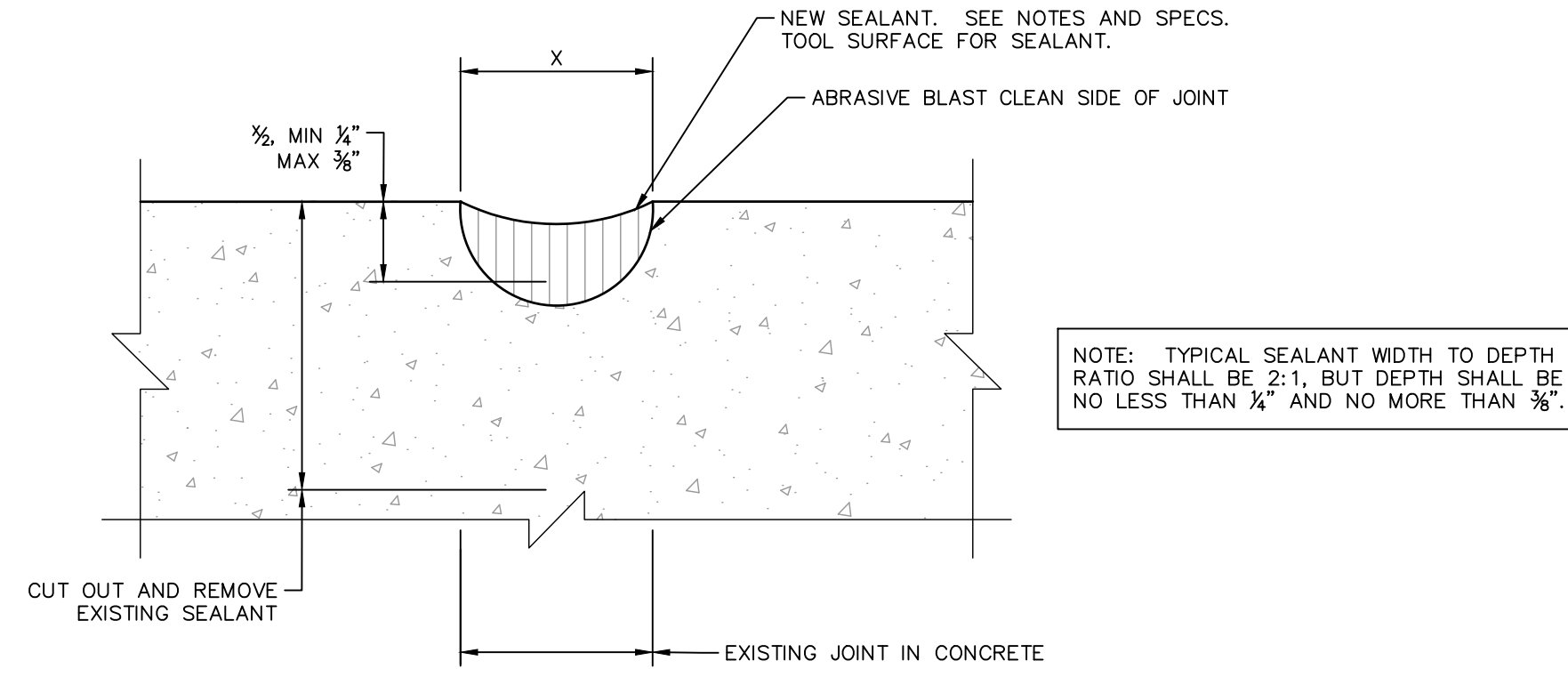
**1**  
S-501 **REPLACEMENT SEALANT IN OPEN CONTROL JOINTS**  
SCALE: N.T.S.

- NOTES:**
1. THE PURPOSE OF THIS REPAIR IS TO REMOVE AND REPLACE THE EXISTING SEALANT IN OPEN CONSTRUCTION JOINTS AND CONTROL JOINTS.
  2. THE CONTRACTOR SHALL IDENTIFY JOINTS TO RECEIVE THIS REPAIR. THE CONTRACTOR SHALL HAVE THE ENGINEER VERIFY THE JOINTS IDENTIFIED.
  3. CONTINUOUS FOAM BACKER RODS SHALL BE INSTALLED PRIOR TO INSTALLATION OF JOINT SEALANT.
  4. NON-SAG SEALANT SHALL BE USED IN JOINTS THAT ARE SLOPED. SELF-LEVELING SEALANT SHALL BE USED IN JOINTS THAT ARE FLAT. SEE TECHNICAL SPECIFICATIONS FOR APPROVED SEALANTS.
  5. THE SURFACE OF SEALANT AT THE EDGE OF THE EXISTING CONCRETE ON EITHER SIDE OF THE JOINT SHALL BE BETWEEN 1/8" AND 1/4" INCH BELOW THE TOP OF CONCRETE SLAB. SEALANT THAT EXTENDS ABOVE THE SLAB SHALL BE CUT DOWN FLUSH WITH TOP OF SLAB.
  6. SEE RELATED TECHNICAL SPECIFICATION 03 0130 AND 07 9200.



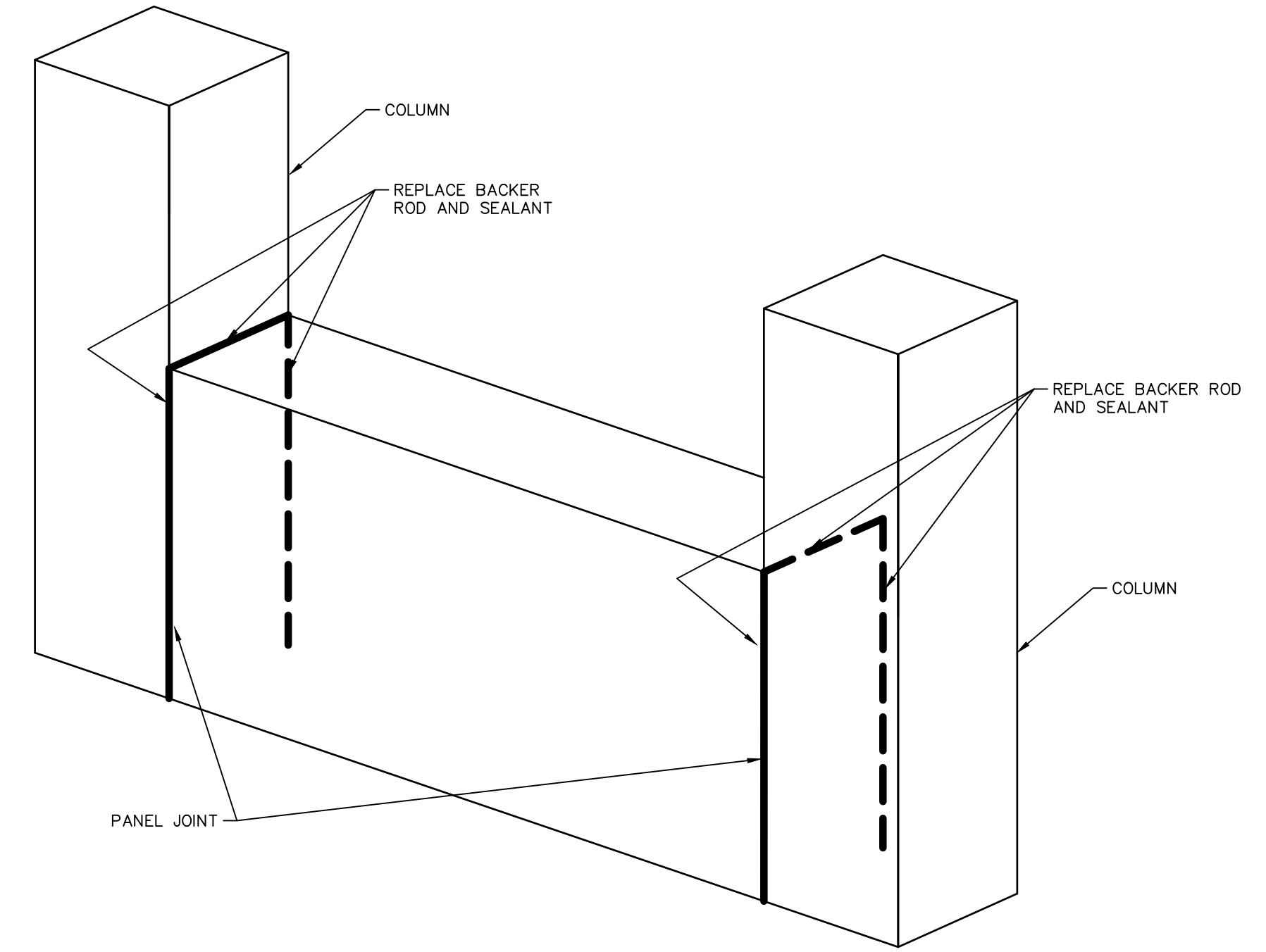
**4**  
S-501 **REPLACEMENT SEALANT AT COVE JOINTS**  
SCALE: N.T.S.

- NOTES:**
1. THE PURPOSE OF THIS REPAIR IS TO PROVIDE A CONTINUOUS CAULKED FILLET JOINT AT THE INTERSECTION OF HORIZONTAL CONCRETE SLABS AND VERTICAL CONCRETE, MASONRY OR STEEL WITHIN THE PARKING DECK. THIS REPAIR IS ALSO USED AT THE VERTICAL INTERSECTION OF WALLS.
  2. SEE RELATED TECHNICAL SPECIFICATION 07 9200.

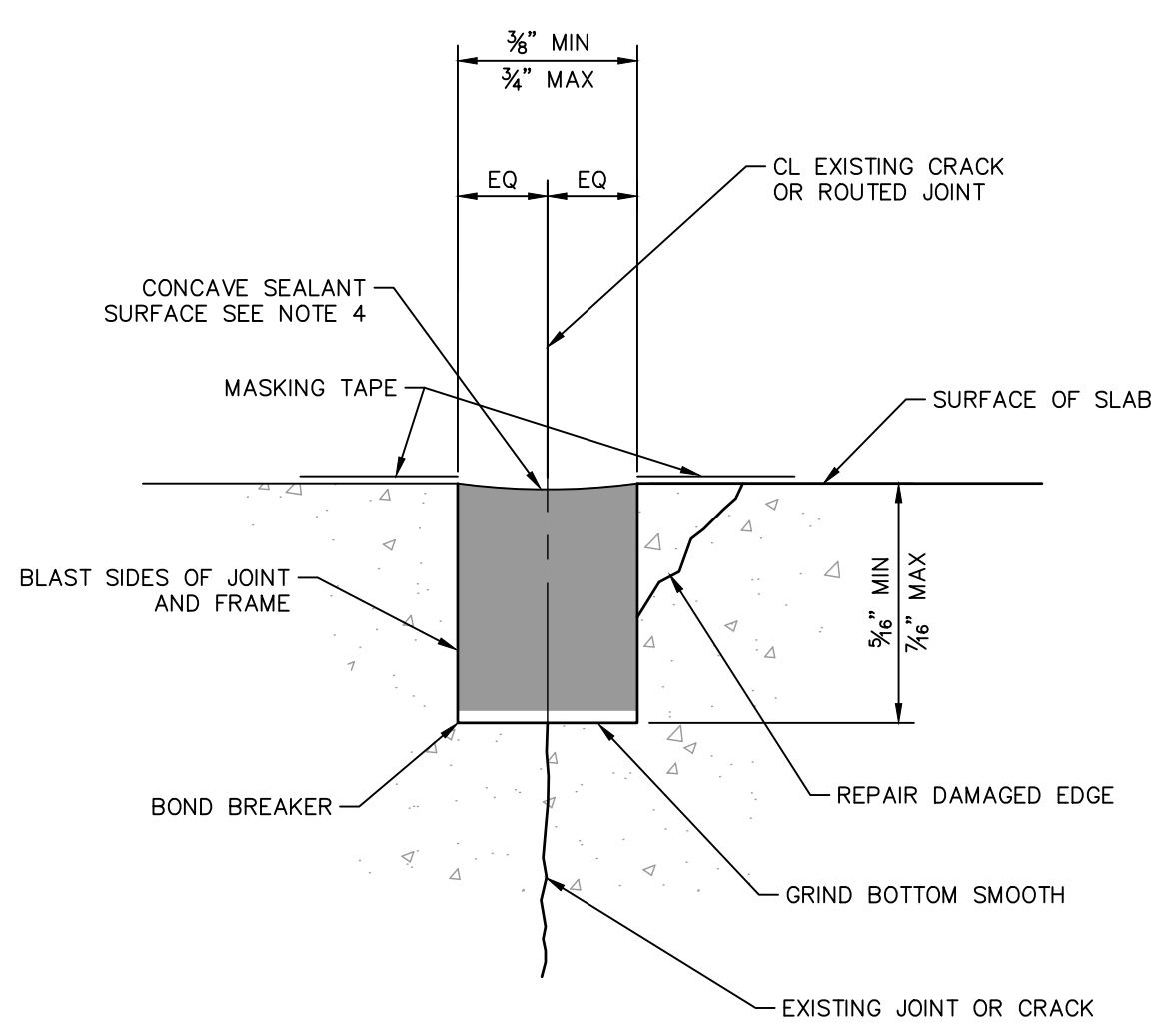


**2**  
S-501 **REPLACEMENT SEALANT IN CONTROL JOINTS**  
SCALE: N.T.S.

- NOTES:**
1. THE PURPOSE OF THIS REPAIR IS TO REMOVE AND REPLACE THE EXISTING SEALANT IN CONTROL JOINTS.
  2. THE CONTRACTOR SHALL IDENTIFY JOINTS TO RECEIVE THIS REPAIR. THE CONTRACTOR SHALL HAVE THE ENGINEER VERIFY THE JOINTS IDENTIFIED.
  3. NON-SAG SEALANT SHALL BE USED IN JOINTS THAT ARE SLOPED. SELF-LEVELING SEALANT SHALL BE USED IN JOINTS THAT ARE FLAT. SEE TECHNICAL SPECIFICATIONS FOR APPROVED SEALANTS.
  4. THE SURFACE OF SEALANT AT THE EDGE OF THE EXISTING CONCRETE ON EITHER SIDE OF THE JOINT SHALL BE BETWEEN 1/8" AND 1/4" INCH BELOW THE TOP OF CONCRETE SLAB. SEALANT THAT EXTENDS ABOVE THE SLAB SHALL BE CUT DOWN FLUSH WITH TOP OF SLAB.
  5. SEE RELATED TECHNICAL SPECIFICATION 03 0130 AND 07 9200.



**5**  
S-501 **VERTICAL JOINT SEALANT REPLACEMENT**  
SCALE: N.T.S.



**3**  
S-501 **ROUT AND SEAL**  
SCALE: N.T.S.

- NOTES:**
1. THE PURPOSE OF THIS REPAIR IS TO INSTALL SEALANT IN JOINTS AND ROUTED CRACKS IN THE CONCRETE SLAB.
  2. THE CONTRACTOR SHALL IDENTIFY CRACKS AND JOINTS TO RECEIVE THIS REPAIR. THE CONTRACTOR SHALL HAVE THE ENGINEER VERIFY THE CRACKS AND JOINTS IDENTIFIED.
  3. NON-SAG SEALANT SHALL BE USED IN JOINTS THAT ARE SLOPED. SELF-LEVELING SEALANT SHALL BE USED IN JOINTS THAT ARE FLAT. SEE TECHNICAL SPECIFICATIONS FOR APPROVED SEALANTS.
  4. THE SURFACE OF THE SEALANT AT THE EDGE OF THE EXISTING CONCRETE ON EITHER SIDE OF THE JOINT SHALL BE BETWEEN 1/16" AND 1/8" INCH BELOW THE TOP OF CONCRETE SLAB. SEALANT THAT EXTENDS ABOVE THE SLAB SHALL BE CUT DOWN FLUSH WITH TOP OF SLAB.
  5. SEE RELATED TECHNICAL SPECIFICATION 03 0130 AND 07 9200.

No.	REVISIONS	DATE	BY

**Kimley»Horn**

© 2019 KIMLEY-HORN AND ASSOCIATES, INC.  
 600 NORTH PINE ISLAND ROAD, SUITE 450, PLANTATION, FL 33324  
 PHONE: 954-535-5100  
 WWW.KIMLEY-HORN.COM CA 00000696

KHA PROJECT	147922021
DATE	5/31/2019
SCALE	AS SHOWN
DESIGNED BY	HLR
DRAWN BY	LD
CHECKED BY	MNS

**CITY HALL  
GARAGE RESTORATION**

PREPARED FOR  
City of Ft. Pierce

FLORIDA

LICENSED PROFESSIONAL	HANNIAH RODRIGUEZ, P.E.
FLORIDA LICENSE NUMBER	86955
DATE:	5/31/2019

**JOINT SEALANT DETAILS**

SHEET NUMBER	S-501
--------------	-------





