

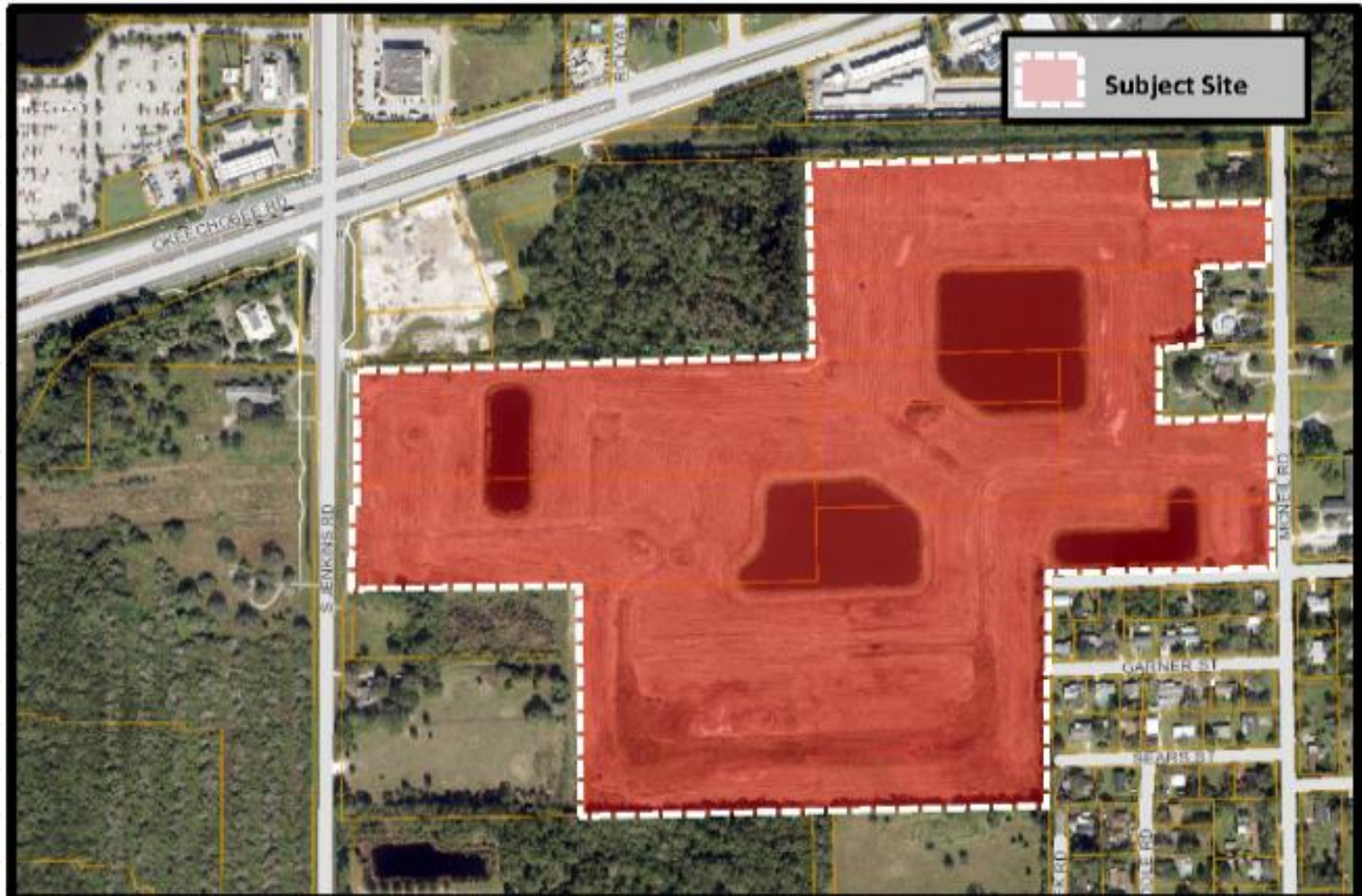
Zoning Atlas Map Amendment & Preliminary Plat



East side of South Jenkins Road,
approximately 1,000 feet south of
State Road 70



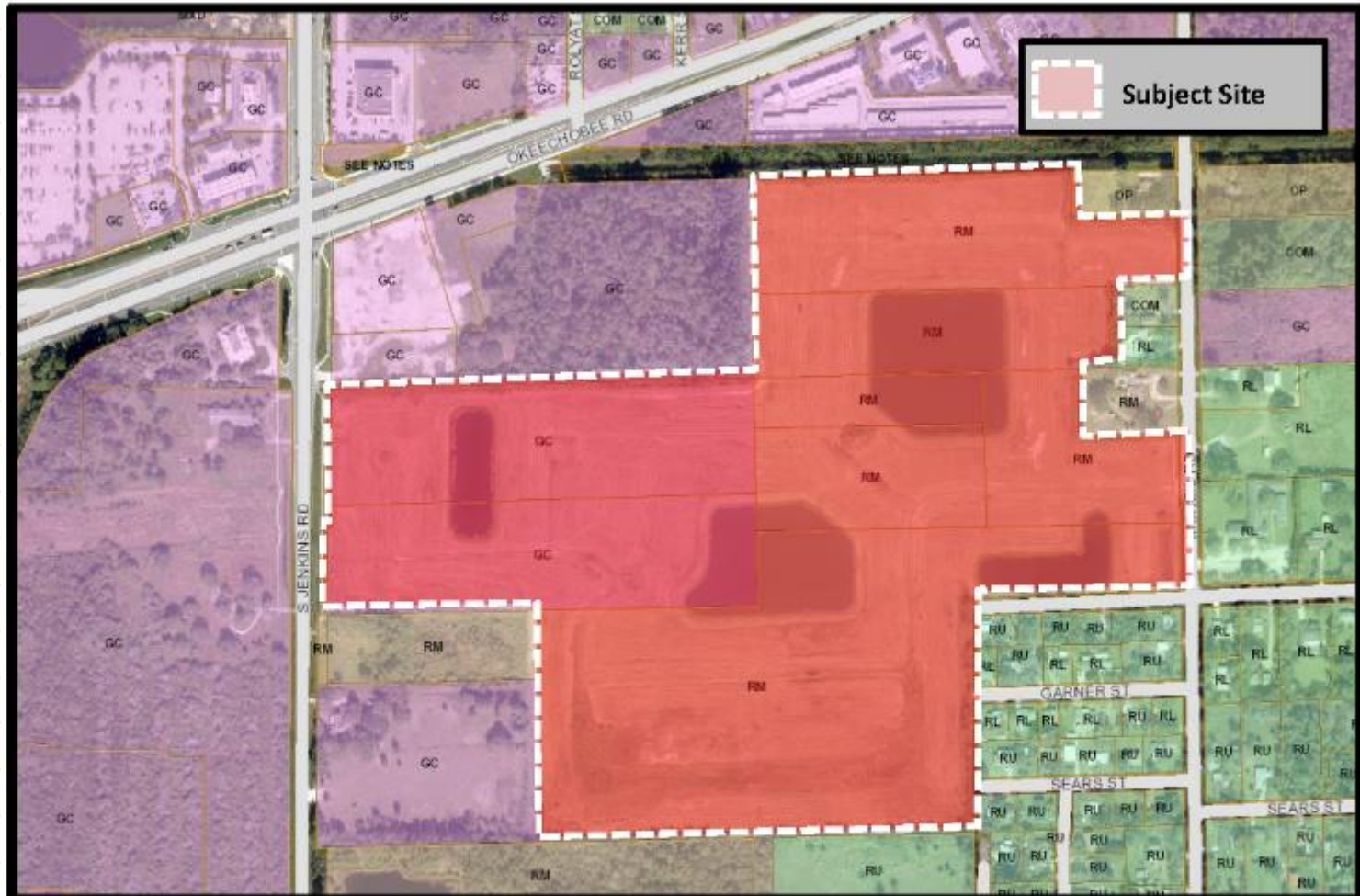
Aerial Map



Zoning Atlas Map Amendment (PD)
Neill Farms
Aerial Map



Future Land Use Map




Zoning Atlas Map Amendment (PD)
Neill Farms
Future Land Use Map



Zoning Map



 Subject Site



Zoning Atlas Map Amendment (PD)

Neill Farms
Zoning Map



Zoning Atlas Map Amendment

Zoning Atlas Map Amendment from C-3, General Commercial (2 parcels) & R-4, Medium Density Residential (6 parcels) to PD, Planned Development with associated Development Plan.

- Staff recommends **Approval** of the request
 - Planning Board voted to recommend approval of the request by a vote of 6-0.
 - Consistent with Section 22-40 & 22-131 of City Code & the Comprehensive Plan.
 - Does not adversely affect the public health, safety, convenience and general welfare.

Staff Recommendation Rezoning

Staff recommends **APPROVAL** of the request with one condition.

1. An open accessible location within the boundaries of the Neill Farms subdivision shall be provided for the specific purpose of a designated school bus drop off/pick up site.

CC Recommendations (Zoning Atlas Amendment)

Possible actions of the City Commission:

- **APPROVE** the proposed Zoning Atlas Amendment with no changes
 - Planning Board recommends approval by a vote of 6-0.
 - Staff recommends approval of the request with one condition.
- **APPROVE** the proposed Zoning Atlas Amendment with changes.
- **DISAPPROVE** the proposed Zoning Atlas Amendment

Preliminary Plat

Preliminary Plat for a Subdivision titled “Neill Farms.”

- Staff recommends **Approval** of the request.
 - Preliminary Plat meets the criteria as specified in Chapter 18 of the Code of Ordinances.
 - Consistent with Land Development Code & Comprehensive Plan

Staff Recommendation

Preliminary Plat

Staff recommends that the Planning Board forward a recommendation of **APPROVAL** to the City Commission, subject to one (1) Condition of Approval:

1. Prior to the submittal of the Final Plat, the applicant address all of the Engineering Comments on the Plat document.

CC Recommendations (Preliminary Plat)

Possible actions of the City Commission:

- APPROVE of the proposed Preliminary Plat subject to 1 Condition with no changes
- APPROVE of the proposed Preliminary Plat with changes
- DISAPPROVE of the proposed Preliminary Plat.

Zoning Atlas Map Amendment & Preliminary Plat



East side of South Jenkins Road,
approximately 1,000 feet south of
State Road 70