

# CONDITIONAL USE PATTI'S HAIR LOUNGE



808 Delaware Avenue

# Request

In accordance with Sections 22-22, and 22-76 Of the City Code, the applicant is asking for approval of a Conditional Use in order to accommodate the Patti's Hair Lounge/Neighborhood Commercial Service.

# Background

The subject building is located in Office Commercial Zoning District (C-1). The Future Land Use of this property is Offices – Professional & Business Services (OP). The proposed 644 square foot hair lounge will replace existing office space.

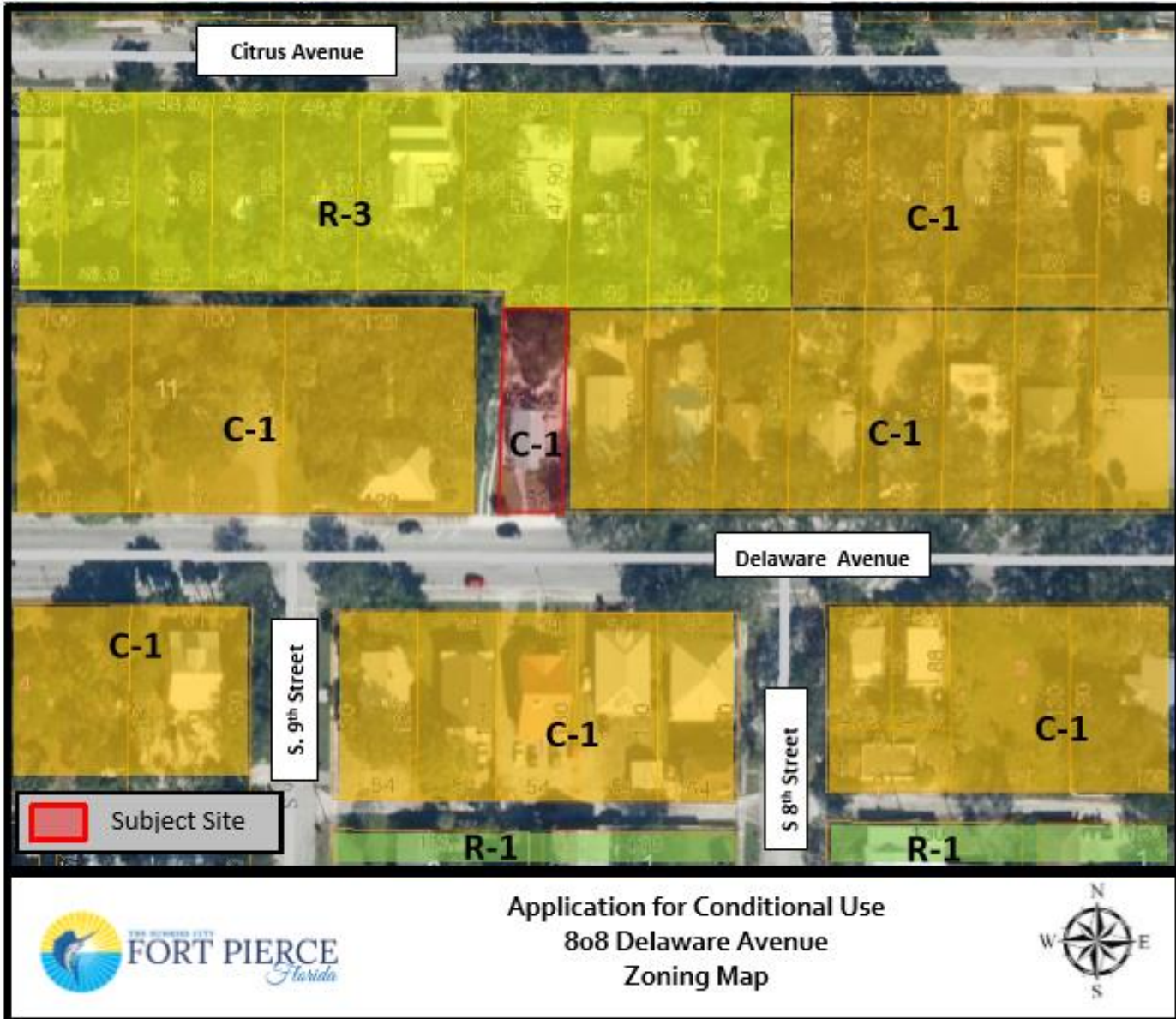
# Location Map



# Aerial View

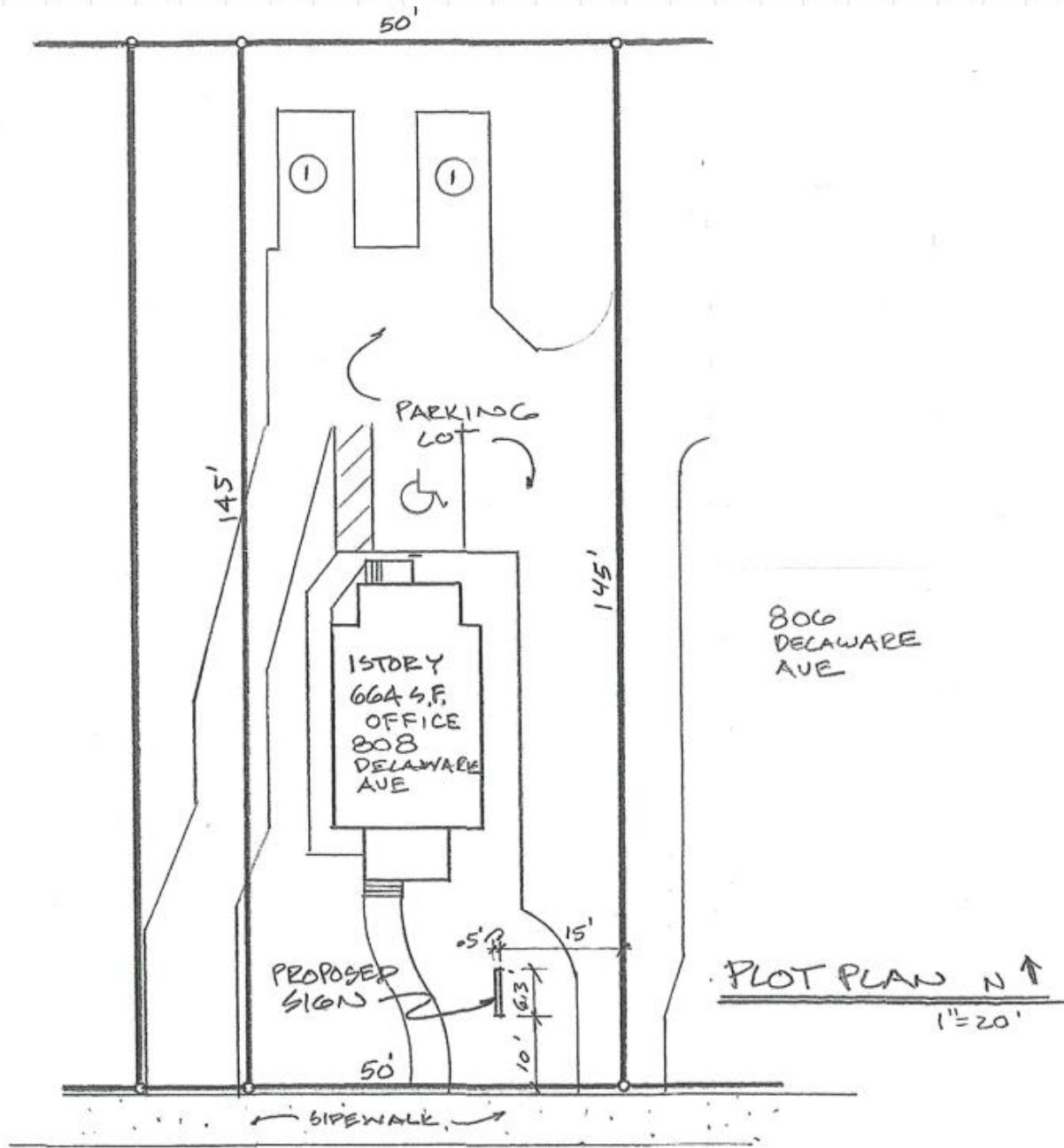


# Zoning Map



Application for Conditional Use  
808 Delaware Avenue  
Zoning Map





# Site Plan



# Proposed Floor Plan

# TRC Comments...

Technical Review Committee reviewed the request for a Conditional Use at February, 2019 meeting. There were no comments at this time.

# Staff Recommendation...

The requested Conditional Use with No New Construction is consistent with City Code and the Comprehensive Plan, and does not adversely affect the public health, safety, convenience and general welfare. Staff recommends that the Planning Board forward a recommendation to approve the request.

# **CONDITIONAL USE PATTI'S HAIR LOUNGE**



**808 Delaware Avenue**