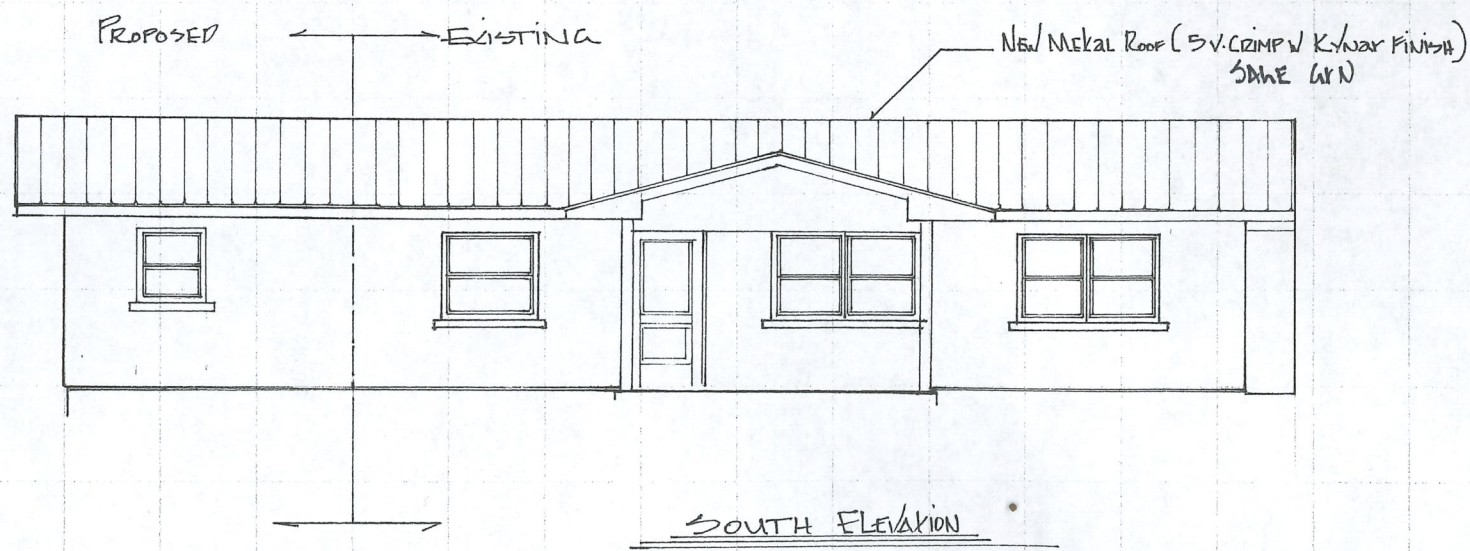
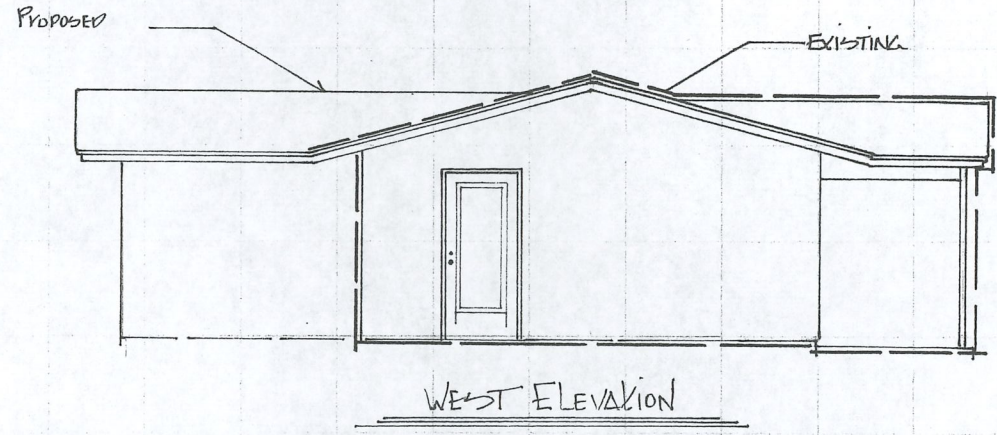
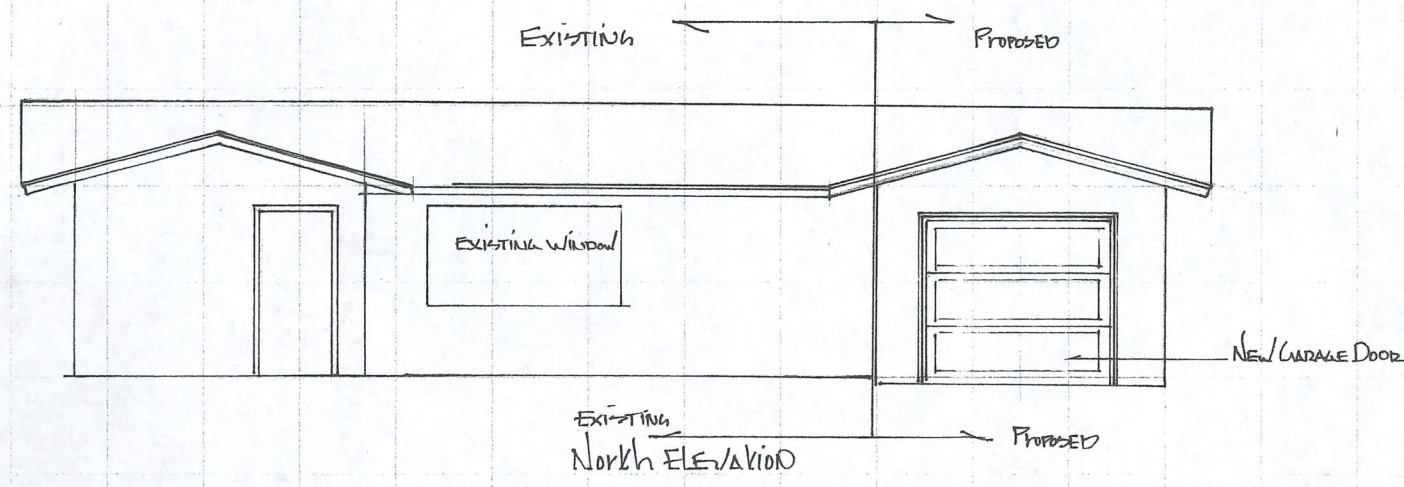
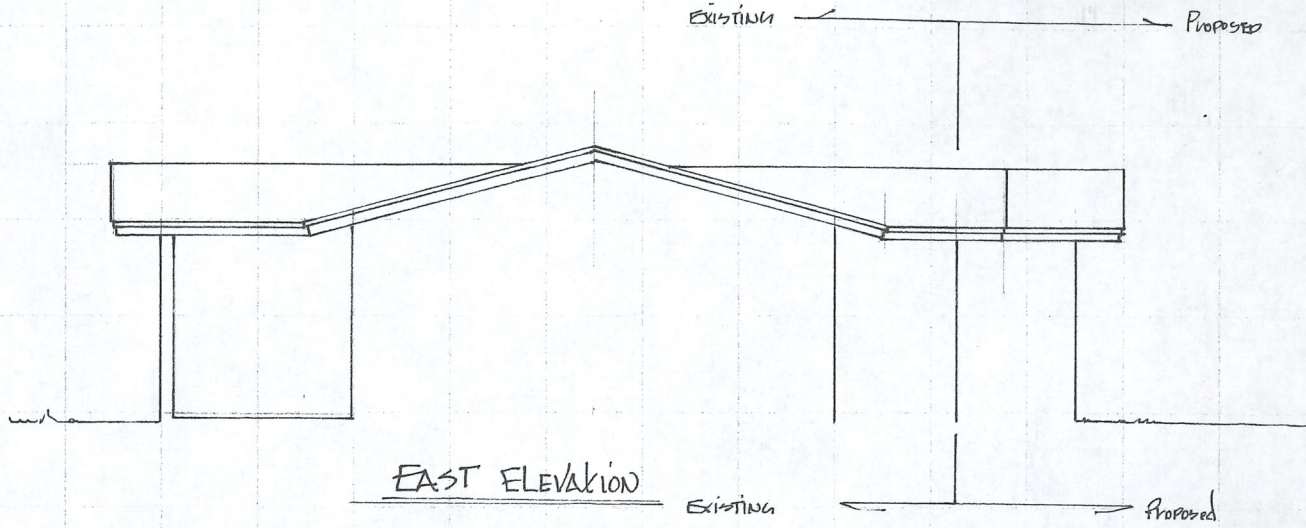


1 2 3 4 5 6 7 8 9 10 11 12 13 14 15 16 17 18 19 20 21 22 23 24 25 26 27 28 29 30 31

A
B
C
D
E
F
G
H
I
J
K
L
M
N
O
P
Q
R
S
T
U



Blank rectangular box.

ELEVATIONS

Cleveland Design Group Inc.

100 Avenue A, Suite 2E
Fort Pierce, Florida 34950
772-464-2010, email: vidanziz@yahoo.com

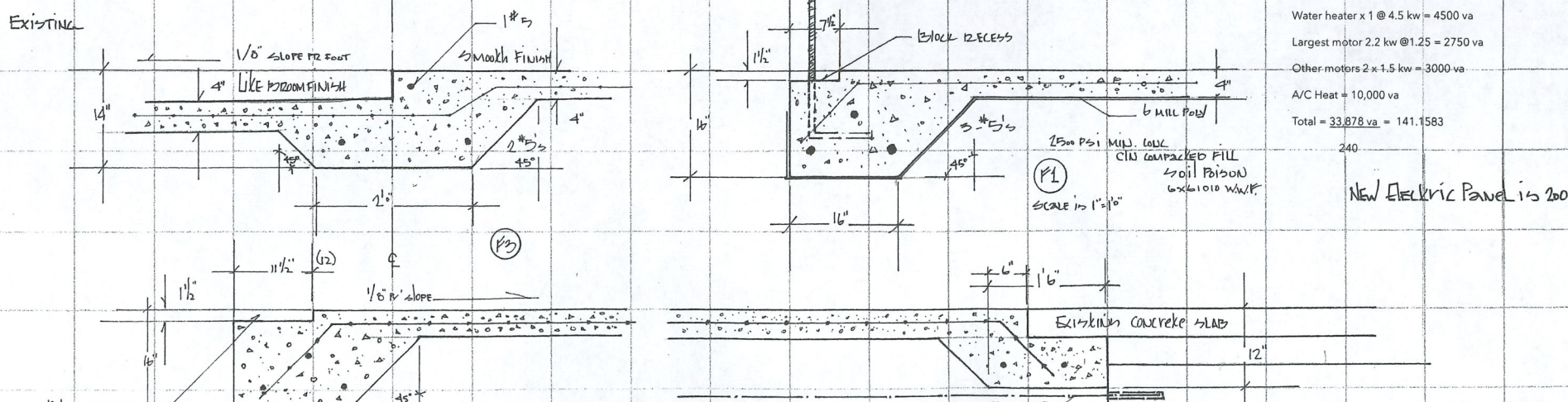
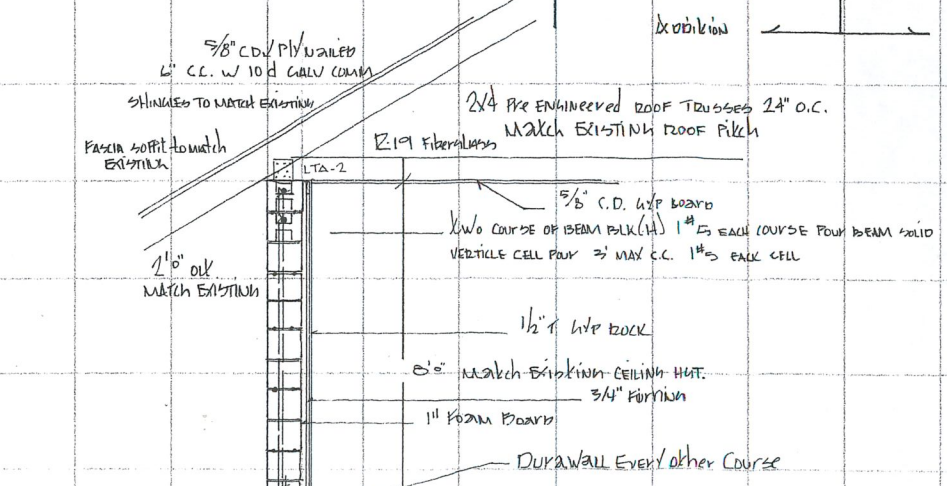
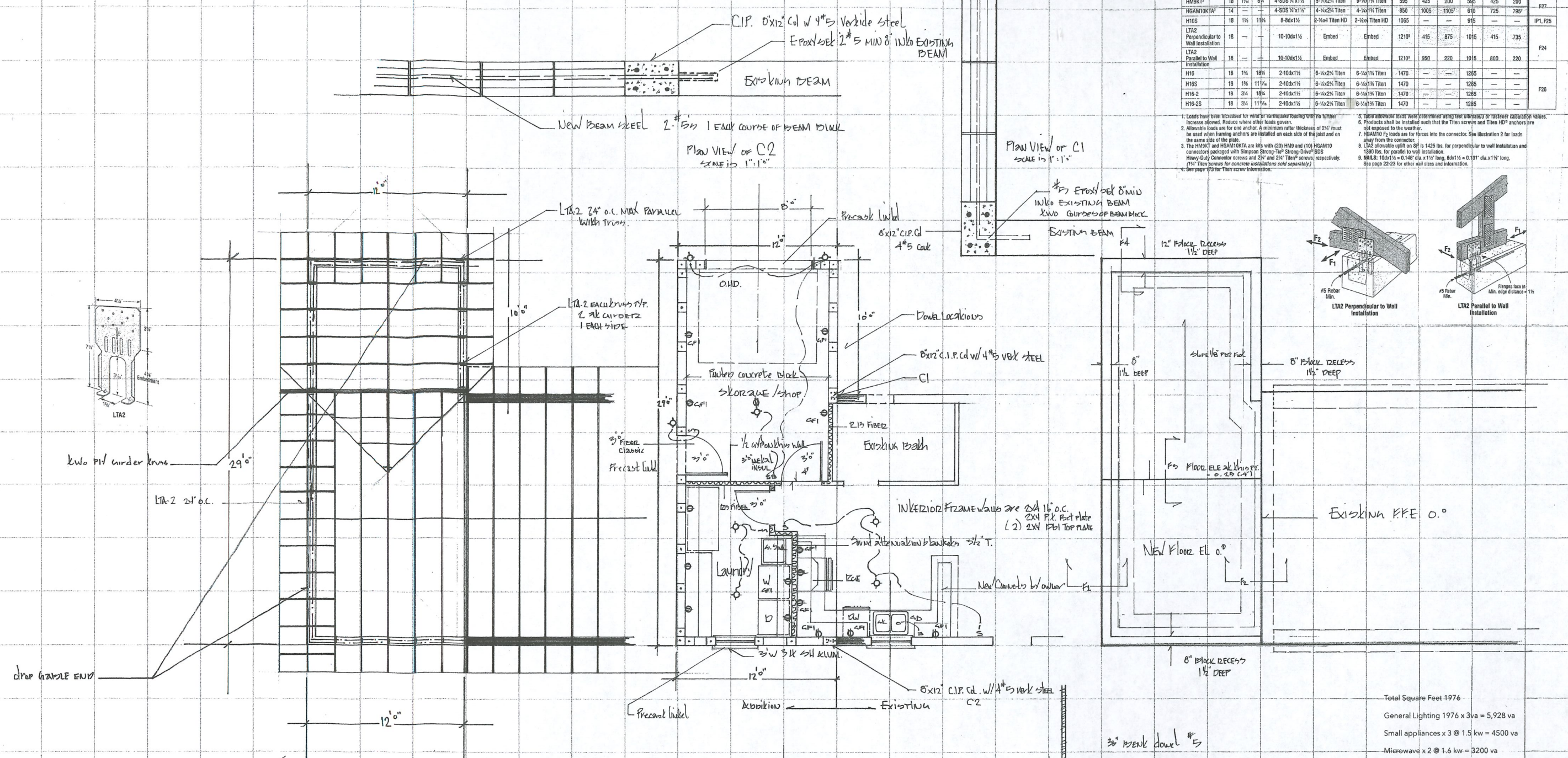
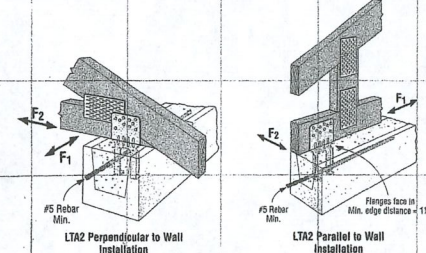
Wood/Morris 916 GEORGIA

SCALE:
DATE:
DRAWN BY:

1 2 3 4 5 6 7 8 9 10 11 12 13 14 15 16 17 18 19 20 21 22 23 24 25 26 27 28 29 30 31

Model No.	Ga	W	Fasteners			DF/SP Allowable Loads ^{1,2}		SPFH/F Allowable Loads ^{1,2}		Code Ref.			
			To Rafter/Truss	To CMU	To Concrete	Uplift ³ (100)	Lateral (100)	Uplift ³ (100)	Lateral (100)				
H8AM10T	18	1 1/4	6/4	4-SDS 3/8x1 1/2	5-3/8x2 1/4 Titen	6-1/8x1 1/4 Titen	595	425	200	595	425	200	F27
H8AM10TAT	14	—	—	4-SDS 3/8x1 1/2	4-3/8x2 1/4 Titen	4-1/8x1 1/4 Titen	850	1005	1105	610	725	795	F27
H10S	18	1 1/4	1 1/4	8-8d x 1 1/2	2-3/8x4 Titen HD	2-3/8x4 Titen HD	1065	—	—	915	—	—	IP1, F25
LT2	18	—	—	10-10d x 1 1/2	Embed	Embed	1210 ⁴	415	875	1015	415	735	F24
LT2 Perpendicular to Wall Installation	18	—	—	10-10d x 1 1/2	Embed	Embed	1210 ⁴	850	220	1015	800	220	F24
H16	18	1 1/4	1 1/4	2-10d x 1 1/2	6-3/8x2 1/4 Titen	6-3/8x1 1/4 Titen	1470	—	—	1285	—	—	F28
H16S	18	1 1/4	1 1/4	2-10d x 1 1/2	6-3/8x2 1/4 Titen	6-3/8x1 1/4 Titen	1470	—	—	1285	—	—	F28
H16-2	18	3/4	1 1/4	2-10d x 1 1/2	6-3/8x2 1/4 Titen	6-3/8x1 1/4 Titen	1470	—	—	1285	—	—	F28
H16-2S	18	3/4	1 1/4	2-10d x 1 1/2	6-3/8x2 1/4 Titen	6-3/8x1 1/4 Titen	1470	—	—	1285	—	—	F28

1. Loads have been increased for wind or earthquake loading with no further increase allowed. Reduce where other loads govern.
 2. Allowable loads are for one anchor. A minimum rafter thickness of 2 1/2" must be used when framing anchors are installed on each side of the joist and on the same side of the plate.
 3. The H8AM10T and H8AM10TAT are only with (20) H8S and (10) H8AM10 connectors packaged with Simpson Strong-Tie® Strong-Driver® SDS Heavy-Duty Connector screws and 2 1/2" and 2 1/4" Titen® screws, respectively. (7/8" Titen screws for concrete installations sold separately.)
 4. See page 22-23 for Titen screw tolerances.
 5. Load allowable loads were determined using Test Procedures or Test Results. Allowable values.
 6. Products shall be installed such that the Titen screws and Titen HD® anchors are not exposed to the weather.
 7. H8AM10-2 loads are for forces into the connector. See Illustration 2 for loads away from the connector.
 8. LT2 allowable uplift on SP is 1425 lbs. for perpendicular to wall installation and 1300 lbs. for parallel to wall installation.
 9. MML: 10d x 1 1/2 = 0.148" dia. x 1 1/2" long, 8d x 1 1/2 = 0.131" dia. x 1 1/2" long.
 See page 22-23 for other nail sizes and information.



Total Square Feet 1976
 General Lighting 1976 x 3va = 5,928 va
 Small appliances x 3 @ 1.5 kw = 4500 va
 Microwave x 2 @ 1.6 kw = 3200 va
 Water heater x 1 @ 4.5 kw = 4500 va
 Largest motor 2.2 kw @ 1.25 = 2750 va
 Other motors 2 x 1.5 kw = 3000 va
 A/C Heat = 10,000 va
 Total = 33,878 va = 141,1583
 240

New Electric Panel is 200 AMP.

Cleveland Design Group Inc.

ENGINEERING BY:
 VICTOR J. GERLEY, FL. PE. 21422

100 Avenue A, Suite 2E
 Fort Pierce, Florida 34950
 772.464.2010, email vidand12@yahoo.com

Wood/Morris Georgia

SCALE:
 AS SHOWN
 DATE:
 0.15.2017