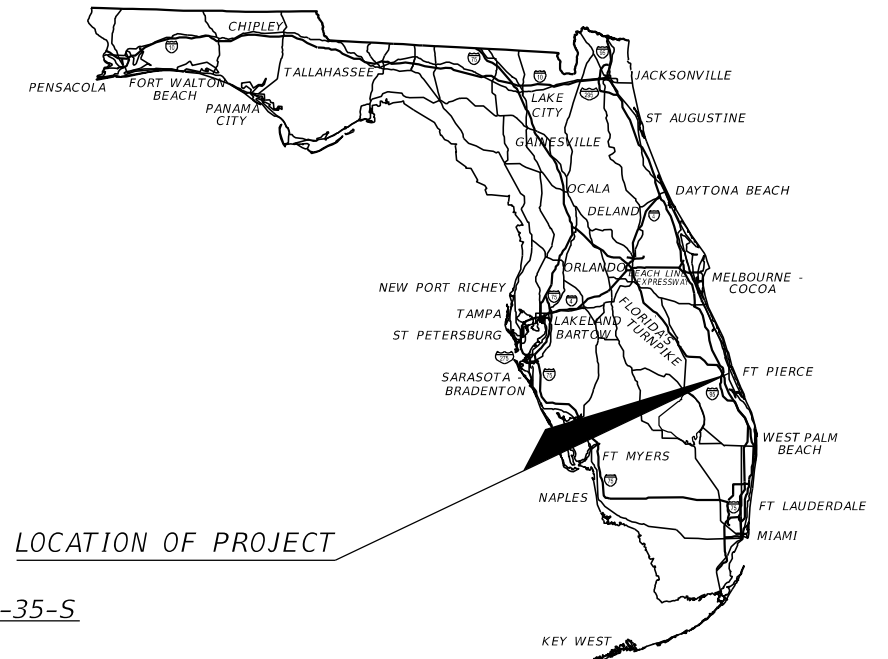
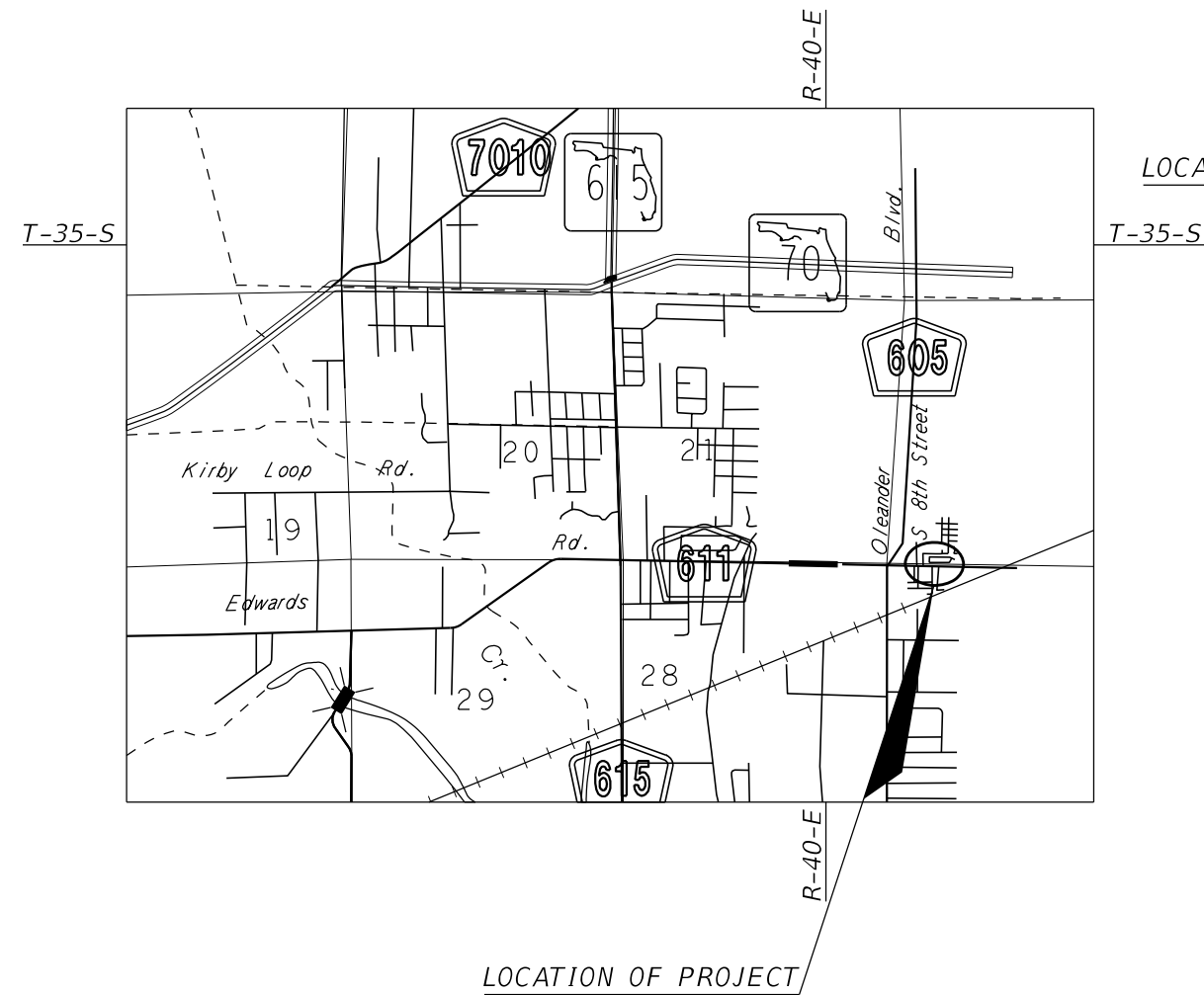


CONTRACT PLANS

8TH STREET STORMWATER PUMP STATION PROJECT

INDEX OF PLANS

| SHEET NO. | SHEET DESCRIPTION |
|-----------|-----------------------|
| 1 | KEY SHEET |
| 2 | GENERAL NOTES |
| 3 | SUMMARY OF PAY ITEMS |
| 4 | DRAINAGE MAP |
| 5 | PLAN SHEET |
| 6 | PUMP STATION DETAILS |
| 7 - 8 | MISCELLANEOUS DETAILS |
| 9 | EROSION CONTROL |



ROADWAY SHOP DRAWINGS
TO BE SUBMITTED TO:
KIMLEY-HORN AND ASSOCIATES, INC.
BRIAN GOOD, P.E.
445 24th STREET, SUITE 200
VERO BEACH, FLORIDA 32960

PLANS PREPARED BY:
Kimley»Horn
445 24th STREET, SUITE 200
VERO BEACH, FL 32960
TEL (772) 794-4100
PROJECT NUMBER: 047922019
CERTIFICATE OF AUTHORIZATION: 00000696

ROADWAY PLANS
ENGINEER OF RECORD: BRIAN GOOD, P.E.

P.E. NO.: 56939

NOTE: THE SCALE OF THESE PLANS MAY
HAVE CHANGED DUE TO REPRODUCTION.

60%
SUBMITTAL
DECEMBER 2019

PREPARED FOR:
JOHNSON-DAVIS, INC.



**Know what's below.
Call before you dig.**

SHEET
NO.

1

GENERAL NOTES

1. ALL CONSTRUCTION AND MATERIALS SHALL CONFORM TO APPLICABLE STANDARDS AND SPECIFICATIONS OF THE CITY OF FORT PIERCE, FLORIDA STANDARD CONTRACT DOCUMENTS AND SPECIFICATIONS FOR PUBLIC WORK PROJECTS, LATEST ISSUE.
2. CONSTRUCTION DETAILS SHALL BE IN ACCORDANCE WITH STATE OF FLORIDA DEPARTMENT OF TRANSPORTATION STANDARD PLANS LATEST ISSUE AND THE CITY OF FT. PIERCE STANDARD DETAILS.
3. THE INFORMATION PROVIDED IN THESE DRAWINGS IS SOLELY TO ASSIST THE CONTRACTOR IN ASSESSING THE NATURE AND EXTENT OF CONDITIONS WHICH WILL BE ENCOUNTERED DURING THE COURSE OF WORK. THE CONTRACTORS ARE DIRECTED, PRIOR TO BIDDING, TO CONDUCT WHATEVER INVESTIGATIONS THEY DEEM NECESSARY TO ARRIVE AT THEIR OWN CONCLUSION REGARDING THE ACTUAL CONDITIONS THAT WILL BE ENCOUNTERED, AND UPON WHICH BIDS WILL BE BASED.
4. LOCATIONS, ELEVATIONS AND DIMENSIONS OF EXISTING UTILITIES AND OTHER FEATURES ARE SHOWN ACCORDING TO THE BEST INFORMATION AVAILABLE AT THE TIME OF THE PREPARATION OF THESE PLANS. THE CONTRACTOR SHALL VERIFY THE LOCATIONS, ELEVATIONS, AND OTHER FEATURES AFFECTING HIS/HER WORK PRIOR TO CONSTRUCTION, AND NOTIFY THE CITY OF FORT PIERCE, ENGINEERING DEPARTMENT IMMEDIATELY WHEN CONFLICT BETWEEN DRAWINGS AND ACTUAL CONDITIONS ARE DISCOVERED. THE CONTRACTOR SHALL WORK AS NEEDED TO AVOID CONFLICT WITH EXISTING UTILITIES (NO ADDITIONAL COST SHALL BE PAID FOR THIS WORK). EXISTING UTILITIES SHALL BE MAINTAINED IN SERVICE DURING CONSTRUCTION UNLESS OTHERWISE APPROVED BY THE UTILITY OWNER.

PRE-TRENCHING IN THE ALIGNMENT AND GRADE OF PROPOSED PIPES, STRUCTURES, CONDUITS AND/OR SUB-GRADE SHALL BE PERFORMED FOURTEEN DAYS IN ADVANCE OF ITS CONSTRUCTION. THE CONTRACTOR SHALL PROVIDE UNDERGROUND UTILITY OWNERS AND THE CITY WITH A FOURTEEN DAY ADVANCE NOTICE OF ANY CONFLICT WITH PROPOSED CONSTRUCTION. PAYMENT FOR PRE-TRENCHING, SURVEY, AND BACKFILLING SHALL BE INCLUDED IN THE UNIT COST OF THE RELATED BID ITEM FOR WORK BEING DONE.
5. THE CONTRACTOR SHALL COORDINATE WITH UTILITIES TO ARRANGE RELOCATION AND TEMPORARY SUPPORT OF UTILITY FEATURES, ETC. AS NECESSARY TO COMPLETE THE WORK.
6. IT SHALL BE THE CONTRACTOR'S RESPONSIBILITY TO LOCATE AND PROTECT ANY AND ALL EXISTING UTILITIES ON THIS PROJECT. THE CONTRACTOR WILL RECEIVE NO DIRECT PAYMENT TO SUPPORT AND/OR PROTECT ANY AND ALL UTILITIES. PAYMENT FOR THIS WORK SHALL BE INCLUDED IN THE UNIT COST OF THE RELATED BID ITEM FOR WORK BEING DONE.
7. THE CONTRACTOR SHALL GIVE AT LEAST 48 HOURS NOTICE TO UTILITY COMPANIES TO PROVIDE FOR THE LOCATION OF EXISTING UNDERGROUND UTILITIES IN ADVANCE OF CONSTRUCTION. CONTACT UTILITIES NOTIFICATION CENTER AT 1-800-432-4770.
8. THE CONTRACTOR IS REQUIRED TO OBTAIN ALL APPLICABLE CONSTRUCTION PERMITS PRIOR TO START OF CONSTRUCTION.
9. THE CONTRACTOR SHALL NOTIFY THE CITY OF FORT PIERCE, ENGINEERING DEPARTMENT AND CITY'S FIELD REPRESENTATIVE, AT LEAST 48 HOURS PRIOR TO CONSTRUCTION.
10. THE CONTRACTOR SHALL CONTACT THE CITY OF FORT PIERCE, ENGINEERING DEPARTMENT AND CITY'S FIELD REPRESENTATIVE IMMEDIATELY OF ANY CONFLICT ARISING DURING CONSTRUCTION OF ANY IMPROVEMENTS SHOWN ON THESE DRAWINGS.
11. B.M. DATA IS NORTH AMERICAN VERTICAL DATUM OF 1988 (NAVD 88).

ANY NAVD 88 MONUMENT WITHIN THE LIMITS OF CONSTRUCTION IS TO BE PROTECTED. IF IN DANGER OF BEING DAMAGE, NOTIFY:
GEODETIC INFORMATION CENTER
ATTN: MARK MAINTENANCE SECTION N/CG-162
6001 EXECUTIVE BLVD.
ROCKVILLE MARYLAND 20852
12. EXISTING SECTION CORNERS AND 1/4 SECTION CORNERS, AND OTHER LAND MARKERS OR MONUMENTS LOCATED WITHIN PROPOSED CONSTRUCTION ARE TO BE REFERENCED BY THE CONTRACTOR PRIOR TO CONSTRUCTION AND RESET AFTER CONSTRUCTION USING REGISTERED LAND SURVEYOR LICENSED IN THE STATE OF FLORIDA.
13. STORM SEWER PIPE LENGTHS SHOWN ARE APPROXIMATE, AND MAY BE ADJUSTED AS REQUIRED UPON APPROVAL BY THE CITY OF FORT PIERCE, ENGINEERING DEPARTMENT.
14. INSTALLATION OF ALL STORM SEWERS, INLETS, MANHOLES AND APPURTENANCES SHALL BE IN ACCORDANCE WITH THE REQUIREMENTS OF THE CITY OF FORT PIERCE, ENGINEERING DEPARTMENT AS INDICATED ON THE DRAWINGS. ALL REINFORCED CONCRETE PIPE SHALL BE CLASS III PIPE.

15. ALL CATCH BASINS AND PIPE INVERTS SHALL BE AS INDICATED ON THE DRAWINGS.
16. CONTRACTOR SHALL ADJUST ALL UTILITY LIDS AND COVERS TO FINISHED GRADE AS REQUIRED.
17. ALL COMPLETED DRAINAGE STRUCTURES SHALL BE PROTECTED FROM CONTAMINATION BY SILT AND CONSTRUCTION DEBRIS. THE CONTRACTOR SHALL PLACE PLYWOOD ON, OR FILTER FABRIC BETWEEN FRAME AND INLET GRATE UNTIL CONSTRUCTION OPERATIONS ARE COMPLETED. ALL DRAINAGE STRUCTURES (EXISTING AND PROPOSED) WITHIN PROJECT LIMITS SHALL BE CLEANED PRIOR TO FINAL ACCEPTANCE. PAYMENT FOR THIS WORK SHALL BE INCLUDED IN THE UNIT COST OF THE RELATED BID ITEM FOR WORK BEING DONE.
18. THE CONTRACTOR SHALL REPLACE ALL PAVING, STABILIZING EARTH, DRIVEWAYS, SIDEWALKS, ETC. WITH THE SAME TYPE OF MATERIAL THAT WAS REMOVED DURING CONSTRUCTION OR AS DIRECTED BY THE CITY OF FORT PIERCE FIELD ENGINEER.
19. THE CONTRACTOR SHALL NOT ENCR OACH INTO PRIVATE PROPERTY WITH PERSONNEL, MATERIAL OR EQUIPMENT WITHOUT WRITTEN PERMISSION FROM THE PROPERTY OWNER.
20. REGARDING MAIL BOXES, WALLS, FENCES, SECURITY GATE TRACKING, OR OTHER PRIVATE PROPERTY OR IMPROVEMENTS THAT SHALL BE TEMPORARILY RELOCATED AND REPLACED, THE CONTRACTOR SHALL COORDINATE WITH THE APPROPRIATE OWNER. ANY AND ALL COSTS ASSOCIATED WITH COORDINATING, REMOVING, AND REPLACING ANY PROPERTY ITEMS SHALL BE INCLUDED IN THE UNIT COST OF THE RELATED BID ITEM FOR WORK BEING DONE.
21. CONTRACTOR SHALL PROVIDE MAINTENANCE OF TRAFFIC IN ACCORDANCE WITH FDOT INDEX 600 SERIES, MUTCD AND THESE PLANS. THE CONTRACTOR SHALL MAINTAIN AT ALL TIMES VEHICULAR AND PEDESTRIAN ACCESS TO ALL RESIDENCES AND/OR BUSINESS.
22. COMPLETE 'AS-BUILT' INFORMATION RELATIVE TO LOCATION, SIZE AND DEPTH OF NEW PIPES, MANHOLES, INLETS, ETC., SHALL BE ACCURATELY RECORDED BY THE CONTRACTOR AND SUBMITTED (SIGNED AND SEALED BY A FLORIDA CERTIFIED P.L.S.) TO THE CITY OF FORT PIERCE, ENGINEERING DEPARTMENT PRIOR TO FINAL ACCEPTANCE OF THE WORK. ALL RECORD INFORMATION ON EXISTING UTILITY CROSSINGS ENCOUNTERED DURING CONSTRUCTION, INCLUDING BUT NOT LIMITED TO PIPES, INLETS, MANHOLE, ETC., SHALL BE RECORDED BY A FLORIDA REGISTERED SURVEYOR AND SHOWN ON THE RECORD DRAWINGS. THE COST OF SIGNED AND SEALED AS-BUILTS SHALL BE INCLUDED IN OVERALL BID AND NO ADDITIONAL COMPENSATION WILL BE ALLOWED.
23. THE CONTRACTOR SHALL BE RESPONSIBLE FOR MAINTAINING THE INTEGRITY OF AND MAKING THE REPAIRS OF EXISTING PAVEMENT, SIDEWALKS, PIPES, CONDUITS, CURBS, CABLES, ETC., WHETHER OR NOT SHOWN ON THE PLANS DAMAGED AS A RESULT OF THE CONTRACTORS OPERATIONS AND/OR THOSE OF HIS SUBCONTRACTORS, AND SHALL RESTORE THEM PROMPTLY AT NO ADDITIONAL EXPENSE TO THE OWNER OR THE CITY OF FORT PIERCE. CONTRACTOR SHALL REPORT ANY DAMAGE TO SIDEWALK, DRIVEWAY, ETC., PRIOR TO BEGINNING WORK IN ANY AREA.
24. ALL DRAINAGE PIPES SHALL BE APPROVED BY CITY OF FORT PIERCE ENGINEERING DEPARTMENT. THE CONTRACTOR SHALL CONSTRUCT A FILTER FABRIC JACKET AT ALL PROPOSED STORM SEWER JOINTS AS PER FDOT INDEX 280. COST OF FILTER FABRIC JACKET SHALL BE INCLUDED IN UNIT PIPE COSTS.
25. EXISTING DRAINAGE STRUCTURES AND CULVERTS ARE TO REMAIN UNLESS OTHERWISE NOTED.

27. EXISTING UTILITY CONTACT INFORMATION:
- | UTILITY COMPANY | CONTACT | PHONE NUMBER | ADDRESS |
|---|---------------|--------------------|---|
| AT&T DISTRIBUTION | LUKE FOLKERTS | 407-496-6041 | 7747 ELLIS RD W. MELBOURNE, FL 32904 |
| FORT PIERCE UTILITY AUTHORITY (WATER/SEWER) | JAMES CARNES | 772-466-1600 x3472 | P.O. BOX 3191 FT PIERCE, FL 34948-3191 |
| CITY OF FORT PIERCE (ELECTRIC/GAS) | PAUL LAGUERRE | 772-466-1600 x6757 | 1701 S 37TH ST FORT PIERCE, FL 34947 |
28. EROSION CONTROL MEASURES SHALL BE TAKEN BY CONTRACTOR DURING CONSTRUCTION AS PER FDOT STANDARDS:
- A. SILT FENCE SHALL BE INSTALLED ALONG THE ENTIRE PERIMETER OF THE PROJECT ADJACENT TO ANY SOIL DISTURBING ACTIVITIES.
 - B. ALL DRAINAGE STRUCTURES ARE TO BE PROTECTED DURING CONSTRUCTION PER FDOT STANDARDS.
 - C. ALL FENCING, GRADING, SIGNING AND SODDING SHALL BE MAINTAINED DURING THE CONTRACT LIFE. ALL DAMAGED WORK SHALL BE RESTORED AT NO COST TO THE CITY.
29. NON-STRUCTURAL CONCRETE UTILIZED IN CURB AND GUTTER, SIDEWALK AND URBAN FLARED TURNOUT CONSTRUCTION SHALL CONSIST OF 3000 PSI FIBER REINFORCED MIX.

| REVISIONS | | | | | | | JOHNSON-DAVIS, INC. 8TH STREET STORMWATER PUMP STATION PROJECT | GENERAL NOTES | SHEET NO. |
|-----------|----|-------------|------|----|-------------|--|--|---------------|-----------|
| DATE | BY | DESCRIPTION | DATE | BY | DESCRIPTION | | | | 2 |
| | | | | | | BRIAN A. GOOD, P.E. P.E. LICENSE NUMBER 56939 445 24th STREET, SUITE 200 VERO BEACH, FL 32960 (772) 794-4100 CERTIFICATE OF AUTHORIZATION: 00000696 | | | |

SUMMARY OF PAY ITEMS

| | | | |
|-------------|---|----|-----|
| 101-1 | MOBILIZATION/DEMOBILIZATION | LS | 1 |
| 102-1 | MAINTENANCE OF TRAFFIC | LS | 1 |
| 104-2 | PREVENTION, CONTROL & ABATEMENT OF EROSION AND WATER POLLUTION | LS | 1 |
| 108-1 | RECORD DRAWINGS | LS | 1 |
| 110-1-1 | STANDARD CLEARING & GRUBBING | LS | 1 |
| 120-1 | EXCAVATION/ EMBANKMENT | LS | 1 |
| 425-11 | MODIFY EXISTING DRAINAGE STRUCTURE | EA | 2 |
| 430-175-115 | CONCRETE PIPE CULVERT (15" RCP) (S/CD) (CL III) | LF | 16 |
| 430-175-124 | CONCRETE PIPE CULVERT (24" RCP) (S/CD) (CL III) | LF | 15 |
| 520-2-4 | CONCRETE CURB (TYPE "D") | LF | 35 |
| 522-2 | DRIVEWAY APRON CONC (6" THICK w/ FIBER MESH) (3,000 PSI MIN.) | SY | 10 |
| 550-10-229 | FENCING (TYPE B) (6.0') (BLACK VINYL COATED w/ TOP RAIL) (W/ BOTTOM LOCKING WALL SLATS) | LF | 34 |
| 550-60-222 | FENCE GATE (TYPE B) (DOUBLE) (14' OPENING)(BLACK VINYL COATED) (W/ BOTTOM LOCKING WALL SLAT | EA | 1 |
| 570-2 | PERFORMANCE TURF SOD (BAHIA) | LS | 1 |
| 580-6-309 | VIBURNUM SUSPENSUM / SANDANKWA VIBURNUM (24"x18", 24" O.C., FULL) | EA | 20 |
| 580-1-4 | MULCH (FLORIMULCH) (4" THICK) | CY | 2.0 |
| 639-1-122 | ELECTRICAL POWER SERVICE (F& I) (UNDERGROUND) (PURCHASED BY CONTRACTOR) | LS | 1 |
| 639-2-122 | NATURAL GAS SERVICE (F&I) (UNDERGROUND) (PURCHASED BY CONTRACTOR) | LS | 1 |
| 639-5-1 | EMERGENCY GENERATOR - PERMANENT (NATURAL GAS STANDBY XX KW) | EA | 1 |
| 1050-11-324 | UTILITY PIPE (FURNISH & INSTALL) (10" PE) (FM) | LF | 25 |
| 1060-11-322 | UTILITY STRUCTURE - BELOW GROUND (PUMP STATION) | EA | 1 |

| | | | | | | | | | |
|------------------|----|-------------|------|----|-------------|---|--|----------------------|--------------|
| <i>REVISIONS</i> | | | | | |  BRIAN A. GOOD, P.E. P.E. LICENSE NUMBER 56939 445 24th STREET, SUITE 200 VERO BEACH, FL 32960 (772) 794-4100 CERTIFICATE OF AUTHORIZATION: 00000696 | JOHNSON-DAVIS, INC. 8TH STREET STORMWATER PUMP STATION PROJECT | SUMMARY OF PAY ITEMS | SHEET NO. |
| DATE | BY | DESCRIPTION | DATE | BY | DESCRIPTION | | 3 | | |



| REVISIONS | | | | | |
|-----------|----|-------------|------|----|-------------|
| DATE | BY | DESCRIPTION | DATE | BY | DESCRIPTION |
| | | | | | |

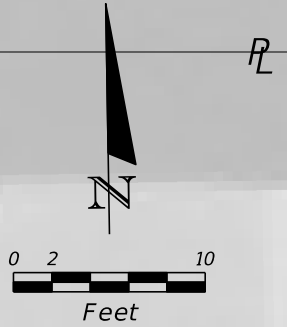
Kimley»Horn
 BRIAN A. GOOD, P.E.
 P.E. LICENSE NUMBER 56939
 445 24th STREET, SUITE 200
 VERO BEACH, FL 32960
 (772) 794-4100
 CERTIFICATE OF AUTHORIZATION: 00000696

JOHNSON-DAVIS, INC.
**8TH STREET STORMWATER
 PUMP STATION PROJECT**

DRAINAGE MAP

SHEET NO.
 4

| POINT NUMBER | NORTHING COORD. | EASTING COORD. | ELEVATION, NAVD | DESCRIPTION |
|--------------|-----------------|----------------|-----------------|------------------------------------|
| P1 | 1119138.0541 | 873100.6621 | 15.52 ± | TIE TO EXISTING ASPHALT |
| P2 | 1119138.2427 | 873112.6670 | 15.59 ± | TIE TO EXISTING ASPHALT |
| P3 | 1119136.2415 | 873112.6335 | 15.65 | BEGIN STRAIGHT CURB END TRANSITION |
| P4 | 1119127.5715 | 873112.4887 | 15.75 | |
| P5 | 1119127.7720 | 873100.4904 | 15.75 | |
| P6 | 1119136.0538 | 873100.6287 | 15.65 | BEGIN STRAIGHT CURB END TRANSITION |
| P7 | 1119142.7408 | 873093.3216 | 15.46 | |
| P8 | 1119137.4278 | 873084.0946 | 15.07 | |
| P9 | 1119134.2916 | 873084.0946 | 15.07 | |
| P10 | 1119134.2916 | 873087.4751 | 15.07 | |
| P11 | 1119138.0134 | 873093.1110 | 15.41 | |



S-100

N: 1119132.1800, E: 873104.8800
 CONST. STORMWATER PUMP STATION
 REFER TO DETAILS
 TOP EL. OF WEL WELL = 15.70
 BOTTOM EL. OF WEL WELL = 8.00
 E. INV. = 11.90
 W. INV. = 12.71±

S-101

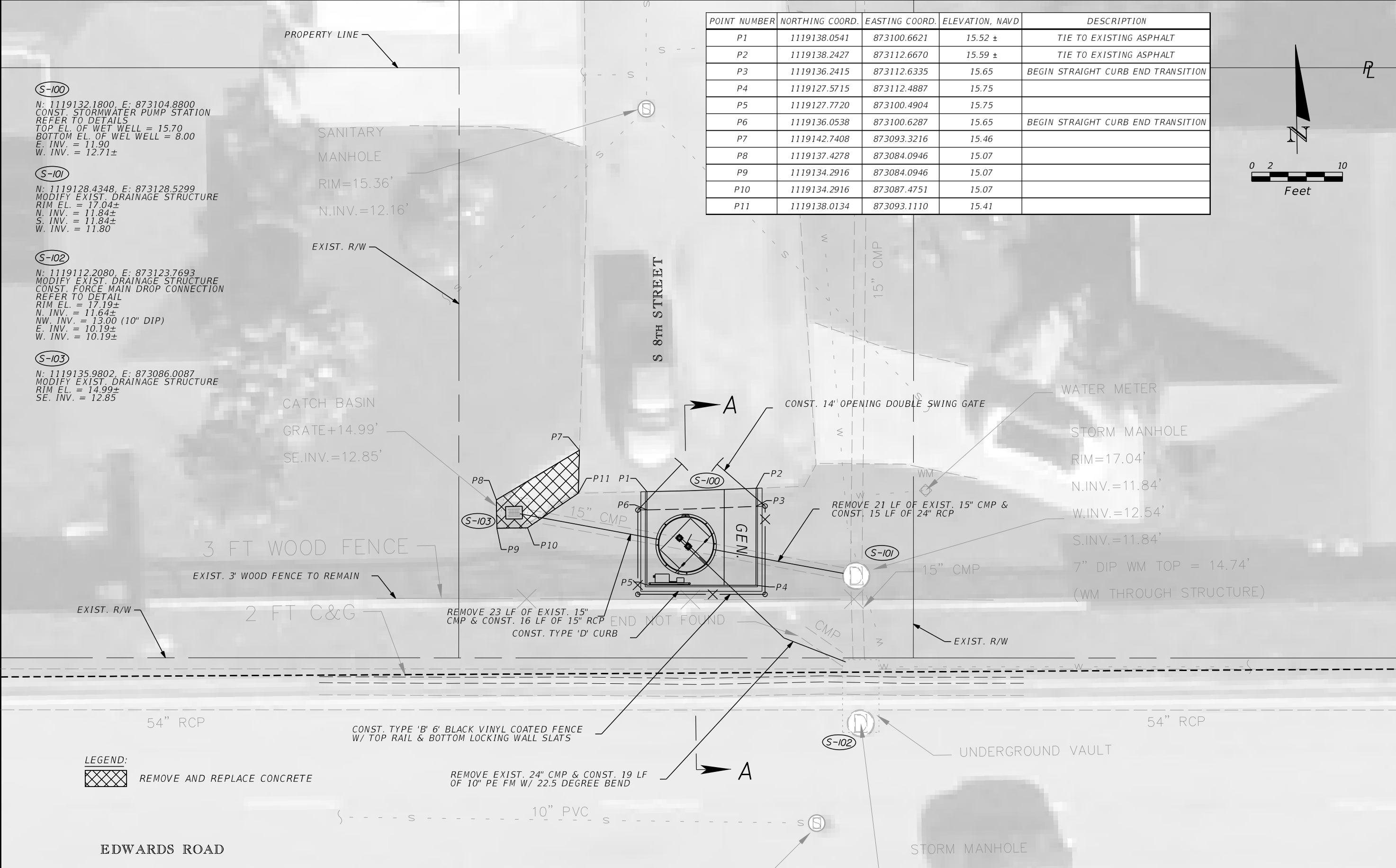
N: 1119128.4348, E: 873128.5299
 MODIFY EXIST. DRAINAGE STRUCTURE
 RIM EL. = 17.04±
 N. INV. = 11.84±
 S. INV. = 11.84±
 W. INV. = 11.80

S-102

N: 1119112.2080, E: 873123.7693
 MODIFY EXIST. DRAINAGE STRUCTURE
 CONST. FORCE MAIN DROP CONNECTION
 REFER TO DETAIL
 RIM EL. = 17.19±
 N. INV. = 11.64±
 NW. INV. = 13.00 (10" DIP)
 E. INV. = 10.19±
 W. INV. = 10.19±

S-103

N: 1119135.9802, E: 873086.0087
 MODIFY EXIST. DRAINAGE STRUCTURE
 RIM EL. = 14.99±
 SE. INV. = 12.85



LEGEND:
 REMOVE AND REPLACE CONCRETE

| REVISIONS | | | | | |
|-----------|----|-------------|------|----|-------------|
| DATE | BY | DESCRIPTION | DATE | BY | DESCRIPTION |
| | | | | | |

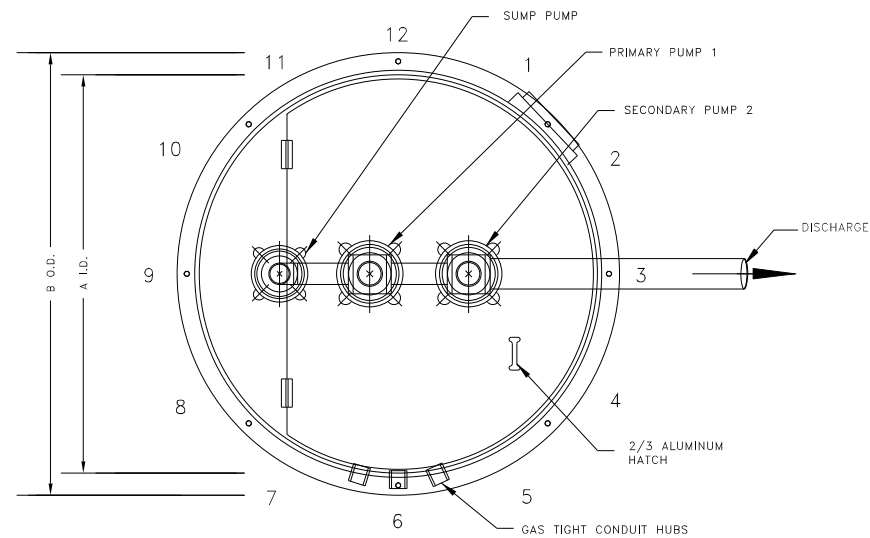
Kimley»Horn
 BRIAN A. GOOD, P.E.
 P.E. LICENSE NUMBER 56939
 445 24th STREET, SUITE 200
 VERO BEACH, FL 32960
 (772) 794-4100
 CERTIFICATE OF AUTHORIZATION: 00000696

JOHNSON-DAVIS, INC.
8TH STREET STORMWATER PUMP STATION PROJECT

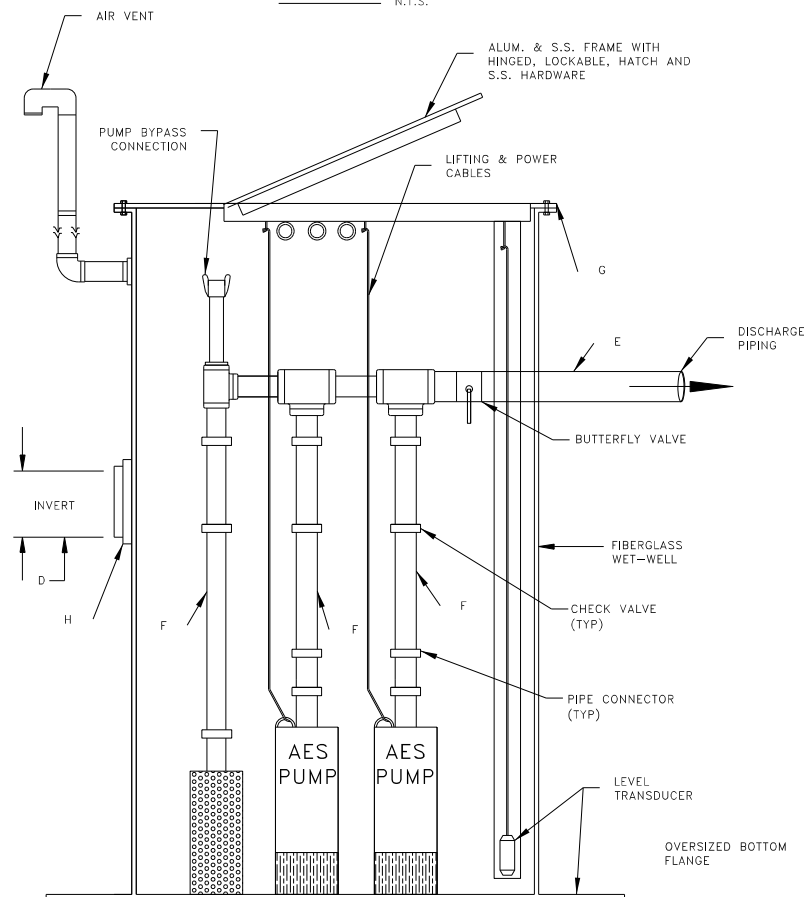
PLAN SHEET
 SHEET NO. 5

HUB AND INVERT LOCATION

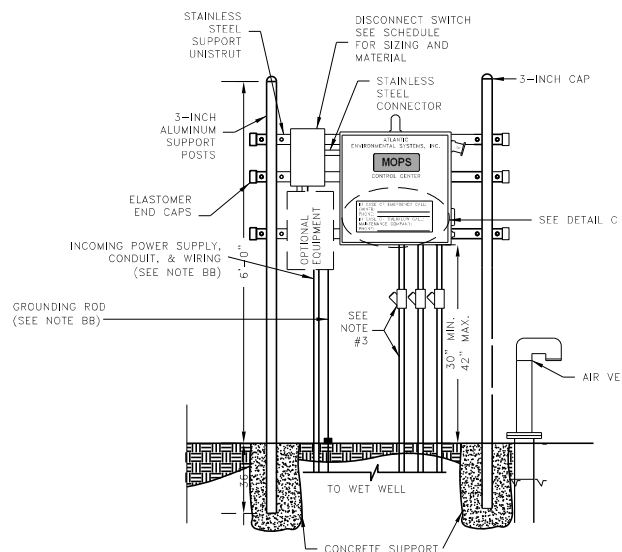
| ITEMS | CLOCK POSITION |
|---------------------------|----------------|
| DISCHARGE LINES | 3:00 |
| PRIMARY INVERT | 1:30 |
| SECONDARY INVERT | N/A |
| LOCATION OF CONTROL PANEL | 6:00 |



TOP VIEW N.T.S.



SECTION VIEW N.T.S.

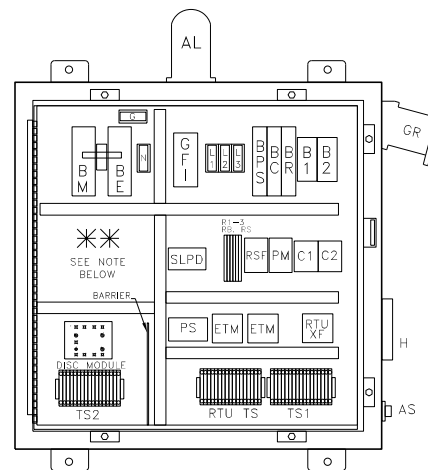


CONTROL CENTER ASSEMBLY AND INSTALLATION N.T.S.

CONTROL CENTER DESIGNED & MANUFACTURED TO MEET ALL D.E.P. REQUIREMENTS

MOPS CONTROL CENTER

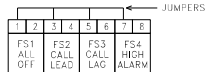
SEE SCHEDULE FOR ELECTRICAL SERVICE REQUIREMENTS



INTERIOR LAYOUT (DOOR NOT SHOWN FOR CLARITY)

| PROTECTIVE | NEU | 120V | RTU | PUMP | MOTOR | MT1 | G | MOTOR | MT2 | G |
|------------|-----------|-----------|------|------|-------|-------|---|-------|-------|---|
| TYPE | TERMINALS | TERMINALS | SEAL | SEAL | 1 | 2 | N | 2 | 2 | N |
| | (IF USED) | (IF USED) | FAIL | FAIL | LEADS | LEADS | D | LEADS | LEADS | D |
| | | | | | | | | | | |

TS1 TERMINAL SCHEDULE



TS2 TERMINAL SCHEDULE

✱✱ THIS SPACE AVAILABLE FOR CAPACITORS FOR SINGLE PHASE OR TRANSFORMER FOR 460V.

PANEL COMPONENTS

- AL ALARM LIGHT
- ALT ALTERNATOR (ON DISC)
- AS ALARM SILENCE SWITCH
- B1-2 MOTOR BREAKERS
- BC CONTROL BREAKER
- BE EMERGENCY BREAKER
- BM MAIN BREAKER
- BPS POWER SUPPLY BREAKER
- BR RECEPTACLE BREAKER
- C1-2 CONTACTOR, MOTOR START
- G1 CONVENIENCE RECEPTACLE
- G2 DUPLEX INTRINSICALLY SAFE CONTROLLER
- ETM ELAPSED TIME METER
- G GROUND BLOCK
- GR GENERATOR RECEPTACLE
- H HORN
- HOA HAND-OFF-AUTO SWITCH (ON DISC)
- L1,2,3 POWER DISTRIBUTION BLOCK
- N NEUTRAL BLOCK
- PL PILOT LIGHT (ON DISC)
- PM PHASE MONITOR
- PS POWER SUPPLY
- R1-3 RELAYS
- RB BATTERY RELAY
- RS SILENCE RELAY
- RSF SEAL FAIL RELAY
- RTUXF RTU TRANSFORMER
- SLPD SURGE/LIGHTNING PROTECTION DEV.
- TS1 TERMINAL STRIP FOR PUMPS
- TS2 TERMINAL STRIP FOR FLOATS

ENCLOSURE

NEMA 4X Stainless Steel
Single Door w/ Padlock Hasp
30"H x 30"W x 8"D

NOTES:

1. PANEL LABELED FOR U.L. 508A "MOTOR CONTROL CENTERS" AND U.L. 698A "HAZARDOUS LOCATION PANELS" (INTRINSICALLY SAFE)
2. COMPLETE BACK-UP, SELF-CHARGING BATTERY, WITH VISUAL/AUDIO ALARM SYSTEM PER RSWF-45.
3. SEE CONTROL CENTER DETAIL SHEET FOR ADDITIONAL NOTES.

AES
ATLANTIC ENVIRONMENTAL SYSTEMS, INC.
LAKE WORTH, FL 33461
PH: (561) 547-8080 FAX: (561) 547-3999 © 2000

STORMWATER SERIES
THIS DRAWING AND THE DESIGN CONTAINED HEREIN IS PROPRIETARY AND IS AND SHALL REMAIN THE PROPERTY OF ATLANTIC ENVIRONMENTAL SYSTEMS, INC. THE DRAWING AND DESIGN SHOULD BE USED ONLY FOR THE PURPOSE FOR WHICH IT IS INTENDED, AND ONLY WITH WRITTEN AUTHORIZATION FROM ATLANTIC ENVIRONMENTAL SYSTEMS, INC. ANY REPRODUCTION, IN WHOLE OR IN PART, MUST CLEARLY SHOW THE ATLANTIC ENVIRONMENTAL NAME AND ADDRESS IN THE REPRODUCTION.

AES PUMP STATION SCHEDULE

| SERIES | ITEM DESCRIPTION | QTY. | MODEL DESIGNATION |
|-------------------------------|------------------|------|---|
| INITIAL DESIGN FLOW (G.P.M.) | SEE BELOW | A | INSIDE DIAMETER OF WET-WELL |
| INITIAL DESIGN HEAD (T.D.H.) | SEE BELOW | B | OUTSIDE DIAMETER OF WET-WELL'S ANTI-FLOATATION FLANGE |
| RATED PERFORMANCE SPEED | 3450 | C | DEPTH OF WET-WELL |
| RATED MOTOR HORSEPOWER | 1.5/3.0 | D | INVERT PIPE DIAMETER |
| SUBMERSIBLE PUMP TYPE (P-1) | STORMWATER | E | FORCE MAIN DIAMETER |
| PUMP MODEL NUMBER | MOPS | F | INTERNAL PIPE DIAMETER |
| SERVICE ENTRANCE VOLTAGE | 208/230 | G | RIM ELEVATION |
| SERVICE ENTRANCE PHASE | 3 | H | INVERT ELEVATION |
| CONTROL CENTER FULL LOAD AMPS | 38 | | MINIMUM CUBIC FEET OF CONCRETE BALLAST (CU YDS) |
| | | | 162/(6) |

| EQUIPMENT IDENTIFICATION | QTY. | MODEL DESIGNATION |
|----------------------------------|------|----------------------|
| PUMP STATION | 1 | SW26-72120-C-1.5/3.0 |
| ODOR/GAS SCRUBBER (OGS) | 0 | N/A |
| CONTROL CENTER | 1 | PSC-222-1.5/3.0 |
| CONTROL CENTER MOUNTING ASSEMBLY | 0 | OPTIONAL |
| DISCONNECT SWITCH | 1 | FDS-60-3-2-PS |
| MOPS ON-SITE GENERATOR SYSTEM | 1 | AES 150 |

PUMP STATION OPERATION:

THE PUMP STATION IS DESIGNED TO HANDLE THE EXPECTED RAIN EVENTS AT THE SITE. THE SUMP PUMP WILL PUMP ALL SMALL RAIN WATER FLOWS FROM THE AREA AND KEEP THE WET-WELL WATER LEVEL LOW OR EMPTY TO ELIMINATE POTENTIAL ODORS FROM STAGNANT WATER.

DURING A RAIN EVENT, PUMP #1 WILL TURN ON. WHEN PUMP #1 CANNOT HANDLE THE INCOMING FLOW, THEN PUMP #2 WILL START PUMPING. BOTH PUMPS WILL REMAIN ON UNTIL THE WATER-LEVEL RECEDES TO A LEVEL WHERE PUMP #1 IS THE ONLY PUMP REQUIRED TO EVACUATE THE RAIN WATER FROM THE WET-WELL.

THE STORM EVENTS WERE PROVIDED BY THE PRIME ENGINEER. AES DID NOT PERFORM ANY STORMWATER CALCULATIONS. THE STATION WAS DESIGNED AND SIZED PER THE PRIME ENGINEER'S STORMWATER CALCULATIONS.

PUMP STATION PERFORMANCE PUMP RATE IN GALLONS PER MINUTE

| | |
|--------------------------|---------------------|
| A) PUMP # 1 | 600 GPM @ 10' TDH |
| B) PUMP # 1 AND PUMP # 2 | 1,000 GPM @ 12' TDH |

| REVISIONS | | | | | |
|-----------|----|-------------|------|----|-------------|
| DATE | BY | DESCRIPTION | DATE | BY | DESCRIPTION |
| | | | | | |

Kimley-Horn
BRIAN A. GOOD, P.E.
P.E. LICENSE NUMBER 56939
445 24th STREET, SUITE 200
VERO BEACH, FL 32960
(772) 794-4100
CERTIFICATE OF AUTHORIZATION: 00000696

JOHNSON-DAVIS, INC.
8TH STREET STORMWATER PUMP STATION PROJECT

PUMP STATION DETAILS

| REVISION | DATE |
|----------|------|
| | |

8TH STREET SW STATION
KIMLEY-HORN AND ASSOCIATES
445 24TH STREET, VERO BEACH, FLORIDA 32960

Project: 1413
Prepared For: 12/06/19

Page No. SW-1



Bottom Locking Double Wall Slats

Bottom Locking Double Wall Slats are an economical and attractive way to enhance any chain link fence. An exclusive, patented locking design makes this one of the easiest to install and assures a clean level finish.

Design - Flat tubular shape with inside reinforced "legs" for extra durability. The patented locking channel provides a "snap-in" locking effect for security and deters vandalism.

Installation - Insert the locking channel horizontally through the bottom of the fence, then simply slide the slats vertically from the top towards the bottom channel and they will automatically lock into place.

Standard Heights - 4 ft., 5 ft., 6 ft., 7 ft., 8 ft., 10 ft., and 12 ft.

Special heights available upon request

Slat Length - 3 1/2" shorter than the overall height of the fence
Wind Load and Privacy Factor - Approximately 75% (Based on wire/mesh used-stretch tension)

Colors - Beige, Redwood, Black, White, Royal Blue, Forest Green, Gray, Dark Brown, Sky Blue

Features and Benefits

Materials - SlatSource® slats are extruded from High Density Polyethylene (HDPE), color pigments and ultra violet (UV) inhibitors specifically formulated to retard the harmful effects of the sun and lengthen the life of the slat.

Durability - Our slats are also resistant to severe weather conditions, salt water, sand, road dirt, most acids, alcohol, alkaline, ammonia, petroleum distillates, and common environmental pollutants.

Maintenance - Our slats are nearly maintenance free. They may be pressure cleaned of surface contaminants with plain water.

Wind Load Disclaimer - We will not be held responsible for fence damage resulting from wind load conditions due to insufficient structural support.

Designations - Meets ASTM Designation: F3000/F3000M (except HedgeLink and Aluminum Slat)

HDPE Technical Properties

| Property | Values |
|------------------|--|
| Melt Index | (4) A low melt index indicates improved stress and crack resistance. |
| Density | (.957) Polyethylene ranges anywhere from .914 to .968 in density. A higher density yields maximum stiffness without becoming overly brittle. |
| Minimum Temp. | (-70° F) Polyethylene stays flexible even at this temperature extreme. |
| Maximum Temp. | (250° F) Polyethylene does not distort until reaching this temperature. |
| Tensile Strength | (3,700 psi) Material will not suffer distortion at lesser loads or impacts. |

| Slat Name | Slat Width | Mesh Size | Wire Gauge | Coverage Area |
|--------------------|------------|-------------|--------------|----------------|
| Bottom Lock 2" | 1 3/32" | 2" | 9 or 11 | 10 linear feet |
| Bottom Lock 2 1/4" | 1 1/4" | 2 1/4" | 11 1/2 or 12 | 10 linear feet |
| Bottom Lock 1 3/4" | 7/8" | 1 3/4" x 2" | 9 or 11 6 | 10 linear feet |

Available Colors

(colors are approximations)



Exact representation of colors in printing is difficult. Please refer to actual color samples for accurate matching. **Samples available upon request.**



A PrivacyLink® Company

1.888.806.7528
 www.slatsforchainlinkfence.com
 info@privacylink.com

Many patents and patents pending.

7/14/3

BOTTOM LOCKING DOUBLE WALL SLATS

N.T.S.

| REVISIONS | | | | | | BRIAN A. GOOD, P.E. P.E. LICENSE NUMBER 56939 445 24th STREET, SUITE 200 VERO BEACH, FL 32960 (772) 794-4100 CERTIFICATE OF AUTHORIZATION: 00000696 | JOHNSON-DAVIS, INC. 8TH STREET STORMWATER PUMP STATION PROJECT | MISCELLANEOUS DETAILS | SHEET NO. |
|-----------|----|-------------|------|----|-------------|--|--|-----------------------|-----------|
| DATE | BY | DESCRIPTION | DATE | BY | DESCRIPTION | | | | 7 |
| | | | | | | | | | |

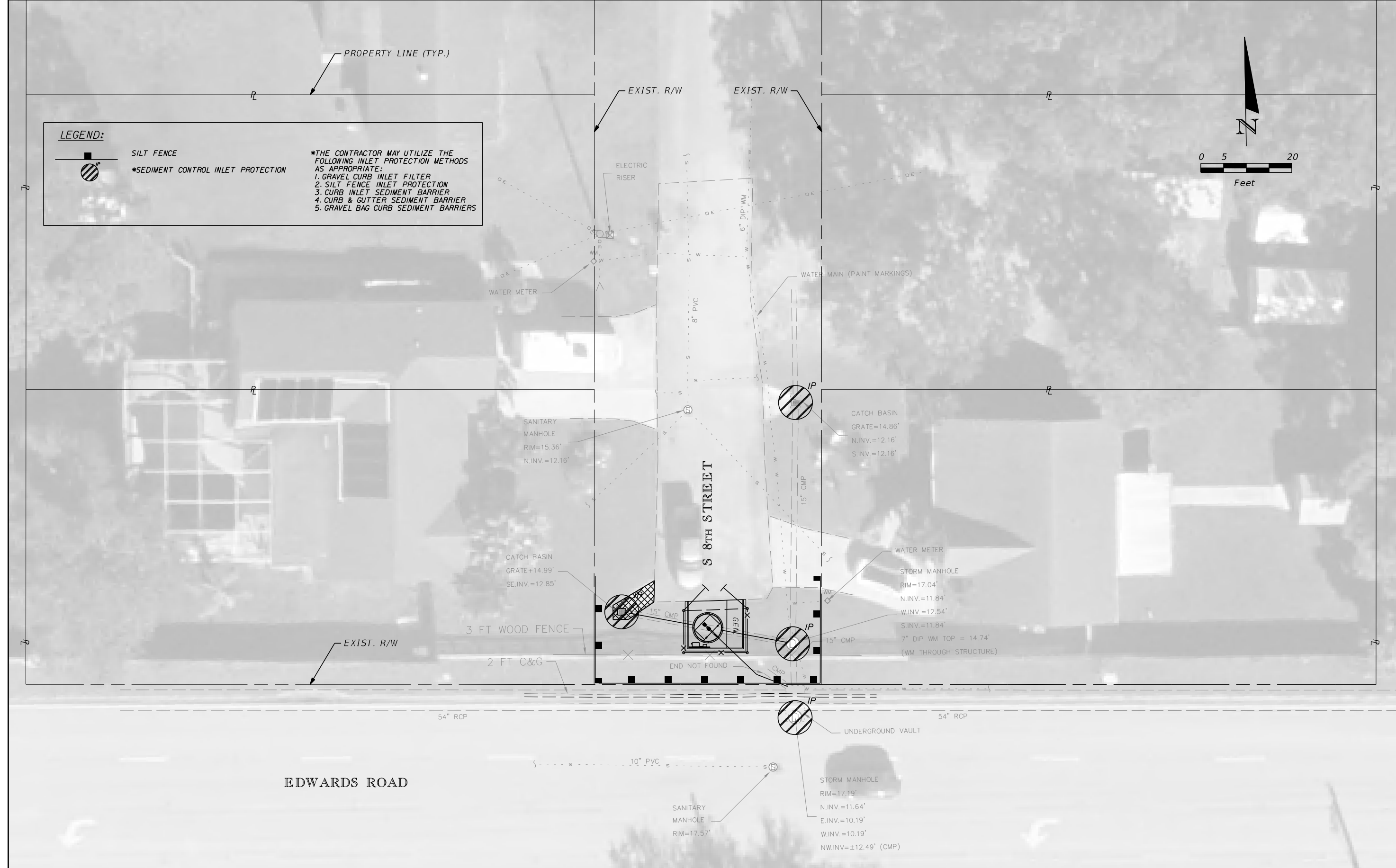
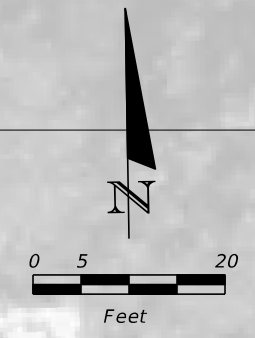
LEGEND:

 SILT FENCE

 *SEDIMENT CONTROL INLET PROTECTION

*THE CONTRACTOR MAY UTILIZE THE FOLLOWING INLET PROTECTION METHODS AS APPROPRIATE:

1. GRAVEL CURB INLET FILTER
2. SILT FENCE INLET PROTECTION
3. CURB INLET SEDIMENT BARRIER
4. CURB & GUTTER SEDIMENT BARRIER
5. GRAVEL BAG CURB SEDIMENT BARRIERS



| REVISIONS | | | | | |
|-----------|----|-------------|------|----|-------------|
| DATE | BY | DESCRIPTION | DATE | BY | DESCRIPTION |
| | | | | | |

Kimley»Horn

BRIAN A. GOOD, P.E.
P.E. LICENSE NUMBER 56939
445 24th STREET, SUITE 200
VERO BEACH, FL 32960
(772) 794-4100
CERTIFICATE OF AUTHORIZATION: 00000696

JOHNSON-DAVIS, INC.

8TH STREET STORMWATER PUMP STATION PROJECT

EROSION CONTROL

SHEET NO.
9