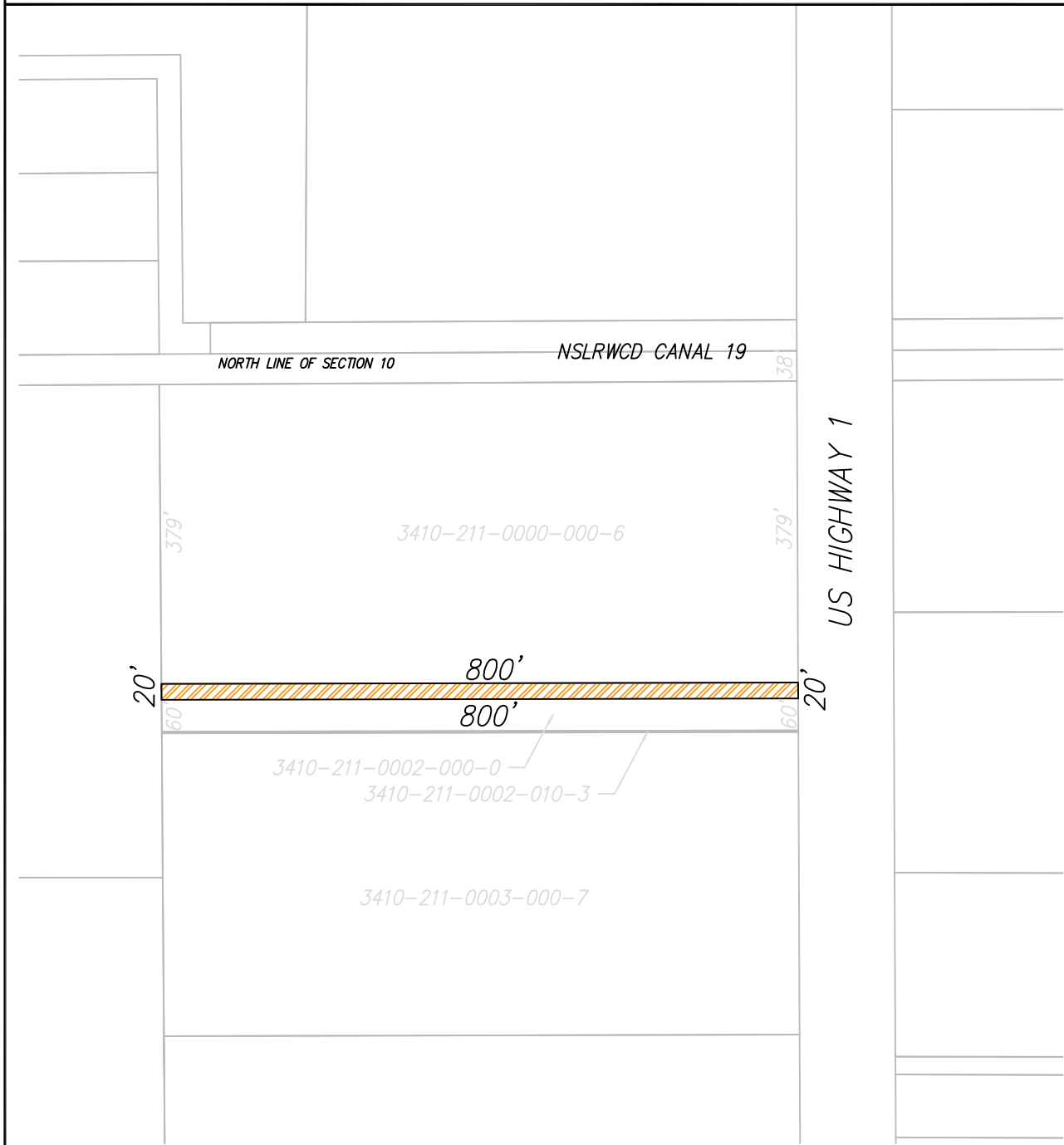


# PUBLIC ACCESS EASEMENT



**NOTE**

1. THIS IS NOT A SURVEY. NO FIELD WORK HAS BEEN CONDUCTED IN THE FORMATION OF THE INFORMATION SHOWN HEREON.



**FPUA**  
COMMUNITY PROUD

**VERIFY SCALE**  
BAR IS EQUAL TO ONE INCH ON ORIGINAL DRAWING  
ADJUST ALL SCALED DIMENSIONS ACCORDINGLY

DATE:	REVISION:	BY:	APPD:
DESIGNED: JC	DRAWING FILENAME: REVISED UE-513		
DRAWN BY: SO	SCALE: 1" = 200'		
APPROVED: JC	DATE: FEBRUARY 10, 2020		

**EXHIBIT "A"**  
**EASEMENT SKETCH**

WATER/WASTEWATER ENGINEERING  
FORT PIERCE UTILITIES AUTHORITY  
1701 SOUTH 37<sup>TH</sup> STREET  
FORT PIERCE, FLORIDA 34947  
(772) 466-1600 / FAX (772) 468-2414

SHEET TYPE: SKETCH  
SHEET # 2 OF 2

# PUBLIC ACCESS EASEMENT

## DESCRIPTION


BEING A PARCEL OF LAND LYING IN SECTION 10, TOWNSHIP 36 SOUTH, RANGE 40 EAST, ST. LUCIE COUNTY, FLORIDA BEING MORE PARTICULARLY DESCRIBED AS FOLLOWS:

THE SOUTH 20 FEET OF THE NORTH 437 FEET OF THE WEST 800 FEET OF EAST 842 FEET OF THE NORTHEAST QUARTER OF THE NORTHWEST QUARTER OF SECTION 10, TOWNSHIP 36 SOUTH, RANGE 40 EAST, ST. LUCIE COUNTY, FLORIDA.

SAID PARCEL CONTAINING 0.367 ACRES MORE OR LESS.

THIS IS NOT A SURVEY



**VERIFY SCALE**  
 BAR IS EQUAL TO ONE  
 INCH ON ORIGINAL DRAWING  
 0  1  
 ADJUST ALL SCALED  
 DIMENSIONS ACCORDINGLY

DATE:	REVISION:	BY:	APPD:
DESIGNED: JC	DRAWING FILENAME: REVISED UE-513		
DRAWN BY: SO	SCALE: NTS		
APPROVED: JC	DATE: FEBRUARY 10, 2020		

EXHIBIT "A"	
EASEMENT DESCRIPTION	
WATER/WASTEWATER ENGINEERING	
FORT PIERCE UTILITIES AUTHORITY 1701 SOUTH 37 <sup>TH</sup> STREET FORT PIERCE, FLORIDA 34947 (772) 466-1600 / FAX (772) 468-2414	
SHEET TYPE DESCRIPTION	SHEET # 1 OF 2