

ALTA/NSPS LAND TITLE SURVEY FOR: AUDUBON DEVELOPMENT, INC.

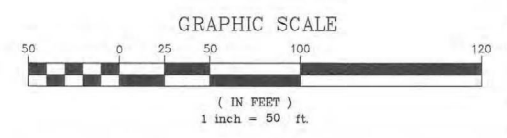
Exhibit "A"



**ENGINEERS & SURVEYORS
ENVIRONMENTAL**

10250 VILLAGE PARKWAY
UNIT 201
PORT ST. LUCIE, FL 34987
772-462-2455
www.edc-inc.com

F.B.P.E. CERTIFICATE OF AUTHORIZATION 9925
L.B. CERTIFICATE OF AUTHORIZATION 0050



ABBREVIATION & SYMBOL LEGEND

<ul style="list-style-type: none"> FND = FOUND NL = NAIL ID = IDENTIFICATION (C) = CALCULATED (D) = DEED FEC = FLORIDA EAST COAST IR&C = IRON ROD & CAP LB = LICENSED BUSINESS O.R. = OFFICIAL RECORDS BOOK PG. = PAGE PK = PARKER & CAYLON P.R. = PLAT BOOK CL = CENTERLINE WV = WATER VALVE 	<ul style="list-style-type: none"> AT&R = AT&T RISER BFV = BACK FLOW PREVENTER B = BENCH BM = BENCHMARK BR = BENCH MARK CR = CABLE RISER CH = CABLE/TV HANDHOLD CB = CATCH BASIN CO = CLEAN OUT CLP = CONCRETE LIGHT POST CPP = CONCRETE POWER POLE CPWP = CONCRETE POWER POLE W/STREET LIGHT CSLP = CONCRETE SIGNAL LIGHT POLE DL = DECORATIVE LIGHT POST DI = DIAMETER DM = DRAINAGE MANHOLE EB = ELECTRIC BOX EHH = ELECTRIC HAND HOLE EM = ELECTRIC METER EP = ELECTRICAL PANEL EX = EXISTING ELEVATION FOR = FIBER OPTIC RISER FOV = FIBER OPTIC VAULT GL = GROUND LIGHT GR = GUARD RAIL GA = GUY WIRE ANCHOR H = HYDRANT ICV = IRRIGATION CONTROL VALVE IP = IRRIGATION PUMP IV = IRRIGATION VALVE LP = LIGHT POST M = MAILBOX MPLP = METAL LIGHT POST MW = MONITORING WELL OW = OVERHEAD WIRE PM = PARKING METER RWV = RECLAIMED WATER VALVE SV = SANITARY VALVE SIR = SET IRON ROD WITH CAP "L.B. 6599" SMD = SET NAIL AND DISK "L.B. 6599" S = SIGN SP = SPIGOT SKV = SPRINKLER VALVE SS = STREET SIGN WSM = WATER SERVICE METER CI = CURB INLET WV = WATER VALVE WPSL = WOOD POLE STREET LIGHT WPP = WOOD POWER POLE TH = TRAFFIC HANDHOLD UH = UNKNOWN HANDHOLD URB = UNKNOWN RISER BOX BPW = BLUE PAINT MARKS RPW = RED PAINT MARKS CPW = GREEN PAINT MARKS OPW = ORANGE PAINT MARKS WPW = WHITE PAINT MARKS ARV = AIR RELEASE VALVE FMH = FPL MANHOLE UMH = UNKNOWN TYPE MANHOLE SMH = SANITARY MANHOLE SDM = STORMWATER DRAINAGE MANHOLE
---	--

**ALTA/NSPS LAND TITLE SURVEY
FOR: AUDUBON DEVELOPMENT, INC.**

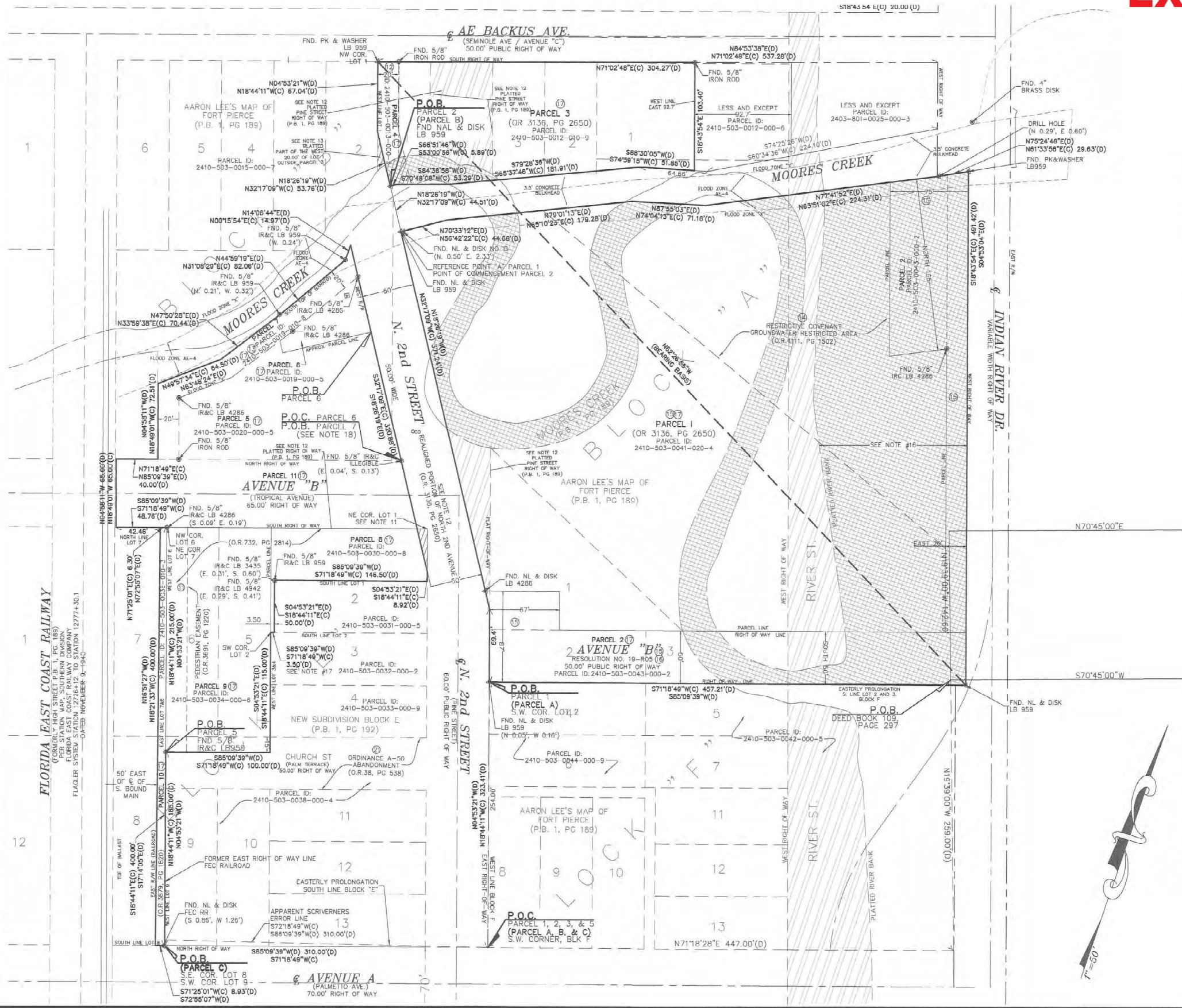
RECORD INFORMATION
SEC. 10, T29N36.35S, R12E, 40 EAST
SAINT LUCIE COUNTY, FLORIDA



10250 VILLAGE PARKWAY
UNIT 201
PORT ST. LUCIE, FL 34987
772-462-2455

19-361

4 OF 4



Z:\EDC\2019\19-361 - King Landscaping - HD King Survey\Drawings - P\Drawings\19-361 ALTA.dwg, 2/27/2020 8:38 PM
THIS DOCUMENT, TOGETHER WITH THE CONCEPTS AND DESIGNATIONS PRESENTED HEREIN, IS AN INSTRUMENT OF SERVICE. IT IS INTENDED ONLY FOR THE SPECIFIC PURPOSE AND CLIENT FOR WHICH IT WAS PREPARED. REUSE OF AND IMPROPER RELIANCE ON THIS DOCUMENT WITHOUT WRITTEN AUTHORIZATION AND ADOPTION BY EDC, INC. SHALL BE WITHOUT LIABILITY TO EDC, INC.