

Annexation Overview and Progress

City Commission
July 12, 2021



General Benefits of Annexation

In **general**, **cities** annex land to allow for:

- Long-term planning necessary to accommodate growth
- Consistency in land development and zoning
- Planning and budgeting for infrastructure, such as roads, sidewalks, stormwater and parks
- Efficient delivery of public services, such as police and garbage collection.

For **residents**, annexation provides for:

- More efficient delivery of public services
- One point of contact for service inquiries and responses
- Greater consistency for oversight and code enforcement
- Local voting rights and representation

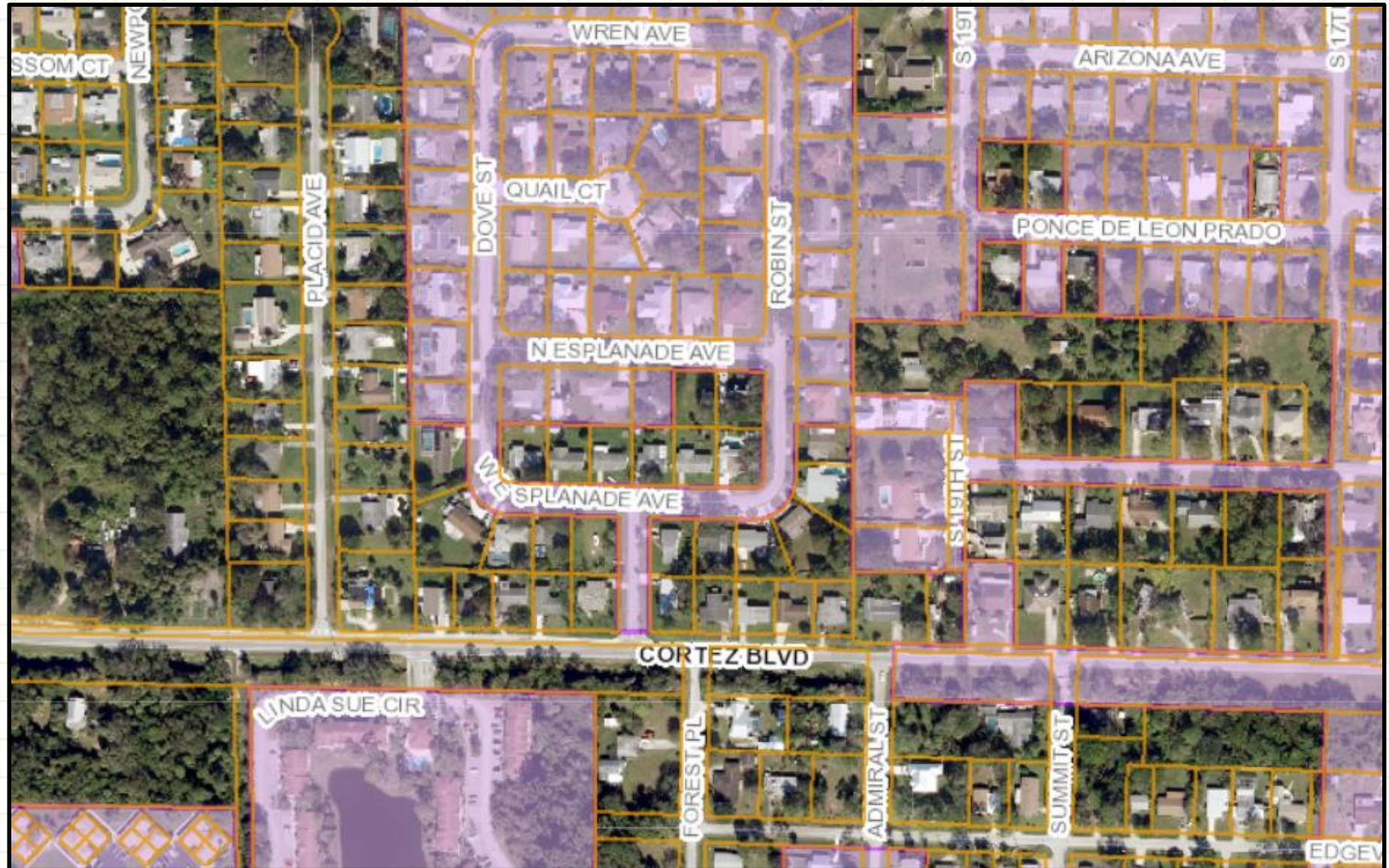
Why Annexation is a City Priority



Why Annexation is a City Priority

- Inefficient Service Delivery for both the City and County
- Difficult to Plan for Orderly Development
- Jurisdictional Confusion
- Land Use and Zoning Inconsistencies
- Roadway Ownership and Maintenance
- Unfair Benefits Without Tax Payments

Why Annexation is a City Priority - Example



Comparison of Residential Taxes

County Taxes

City Taxes

AD VALOREM TAXES						
TAXING AUTHORITY		MILLAGE RATE	ASSESSED VALUE	EXEMPTION AMOUNT	TAXABLE VALUE	TAXES LEVIED
St Lucie Co Storm Wtr Mgt	772-462-1670	0.3497	115,000	50,000	65,000	22.73
County Parks MSTU	772-462-1670	0.2313	115,000	50,000	65,000	15.03
Co Public Transit MSTU	772-462-1670	0.1269	115,000	50,000	65,000	8.25
Erosion District E	772-462-1670	0.1763	115,000	50,000	65,000	11.46
Law Enf, Jail, Judicial Sys	772-462-1670	3.2324	115,000	50,000	65,000	210.11
Co General Revenue Fund	772-462-1670	4.2077	115,000	50,000	65,000	273.50
St Lucie Co Comm Dev MSTU	772-462-1670	0.4300	115,000	50,000	65,000	27.95
Law Enforcement MSTU	772-462-1670	0.9103	115,000	50,000	65,000	59.17
Childrens Service Council	772-408-1100	0.4765	115,000	50,000	65,000	30.97
St Lucie Co Fire District	772-621-3342	3.0000	115,000	50,000	65,000	195.00
FL Inland Navigation Dist	561-627-3386	0.0320	115,000	50,000	65,000	2.08
School Discretionary	772-429-3970	0.7480	115,000	25,000	90,000	67.32
School Capital Improvemnt	772-429-3970	1.5000	115,000	25,000	90,000	135.00
School Req Local Effort	772-429-3970	3.7010	115,000	25,000	90,000	333.09
School Voter Referendum	772-429-3970	1.0000	115,000	25,000	90,000	90.00
Mosquito Control	772-462-1670	0.1352	115,000	50,000	65,000	8.79
S FL Wtr Mgmt District	561-686-8800	0.2675	115,000	50,000	65,000	17.39
MILLAGE CODE	0002	TOTAL MILLAGE	20.5248	TOTAL AD VALOREM TAXES		\$1,507.84

AD VALOREM TAXES						
TAXING AUTHORITY		MILLAGE RATE	ASSESSED VALUE	EXEMPTION AMOUNT	TAXABLE VALUE	TAXES LEVIED
County Parks MSTU	772-462-1670	0.2313	119,456	50,000	69,456	16.07
Co Public Transit MSTU	772-462-1670	0.1269	119,456	50,000	69,456	8.81
Erosion District E	772-462-1670	0.1763	119,456	50,000	69,456	12.25
Law Enf, Jail, Judicial Sys	772-462-1670	3.2324	119,456	50,000	69,456	224.51
Co General Revenue Fund	772-462-1670	4.2077	119,456	50,000	69,456	292.25
Childrens Service Council	772-408-1100	0.4765	119,456	50,000	69,456	33.10
St Lucie Co Fire District	772-621-3342	3.0000	119,456	50,000	69,456	208.37
FL Inland Navigation Dist	561-627-3386	0.0320	119,456	50,000	69,456	2.22
City of Fort Pierce	772-467-3000	6.9000	119,456	50,000	69,456	479.25
School Discretionary	772-429-3970	0.7480	119,456	25,000	94,456	70.65
School Capital Improvemnt	772-429-3970	1.5000	119,456	25,000	94,456	141.68
School Req Local Effort	772-429-3970	3.7010	119,456	25,000	94,456	349.58
School Voter Referendum	772-429-3970	1.0000	119,456	25,000	94,456	94.46
Mosquito Control	772-462-1670	0.1352	119,456	50,000	69,456	9.39
S FL Wtr Mgmt District	561-686-8800	0.2675	119,456	50,000	69,456	18.58
MILLAGE CODE	0022	TOTAL MILLAGE	25.7348	TOTAL AD VALOREM TAXES		\$1,961.17

NON-AD VALOREM ASSESSMENTS			
LEVYING AUTHORITY			AMOUNT
COSW County Waste Disposal Services	772-462-1631		276.14
NS40 N St Lucie Wtr Mgmt Dist	772-461-5050		25.00
TOTAL ASSESSMENTS			\$301.14
COMBINED TAXES AND ASSESSMENTS			\$1,808.98

NON-AD VALOREM ASSESSMENTS			
LEVYING AUTHORITY			AMOUNT
FP23 Fort Pierce Stormwater Mgmt Maint	772-467-3777		69.00
NS40 N St Lucie Wtr Mgmt Dist	772-461-5050		25.00
TOTAL ASSESSMENTS			\$94.00
COMBINED TAXES AND ASSESSMENTS			\$2,055.17

Pay One Amount (Discount Already Deducted) If Postmarked By Please Pay Nov 30, 2020 \$0.00

Pay One Amount (Discount Already Deducted) If Postmarked By Please Pay Nov 30, 2020 \$0.00

Jurisdiction: Saint Lucie County
Assessed value - \$115,000
Taxable Value: \$65,000

Jurisdiction: City of Fort Pierce
Assessed value: \$119,456
Taxable Value: \$69,456

Millage is the tax rate approved by the local taxing authorities. It is used to calculate ad valorem taxes. One mill equals \$1 for every \$1,000 of taxable property value.

Fiscal Impacts

St. Lucie County Fees that are **removed**:

- Stormwater Management **0.3497 mils**;
- Community Development Municipal Service Taxing Unit MSTU **0.4300 mils**;
- Law Enforcement MSTU **0.9103 mils**;
- Waste Disposal Service **fee (varies)**;
- Electric - **5% surcharge**; and
- Water **net - 15% surcharge**.

Fort Pierce Fees that are added with annexation:

- City of Fort Pierce ad valorem tax- **6.900 mils**;
- Net change of (+ 5.21 mils);

- City of Fort Pierce Stormwater Management Fee change; and
- Utility Rate change.

Interlocal Service Boundary Agreements (ISBA)

Provided for in Chapter 171, Part 2 of the Florida Statutes

Intent is to encourage:

- Intergovernmental coordination
- Efficient and effective service delivery
- Flexible process to adjust boundaries
- Address wide range of the effects of annexation
- Reduce conflicts and duplication
- Sensible boundaries that reduce the cost of government

Process:

- Initiation
- Response
- Inclusion
- Negotiation

Interlocal Service Boundary Agreements (ISBA)

Scope (but not limited to):

- Service delivery and boundary adjustment
- Public safety
- Fire Rescue
- Water and wastewater
- Road ownership, construction, and maintenance
- Parks and recreation
- Stormwater management
- Process and schedule for annexation / priority areas
- Process for land use decisions
- Prerequisites (not limited to Part 1 requirements):
 - May be non-contiguous
 - May create enclaves
 - May be non-compact

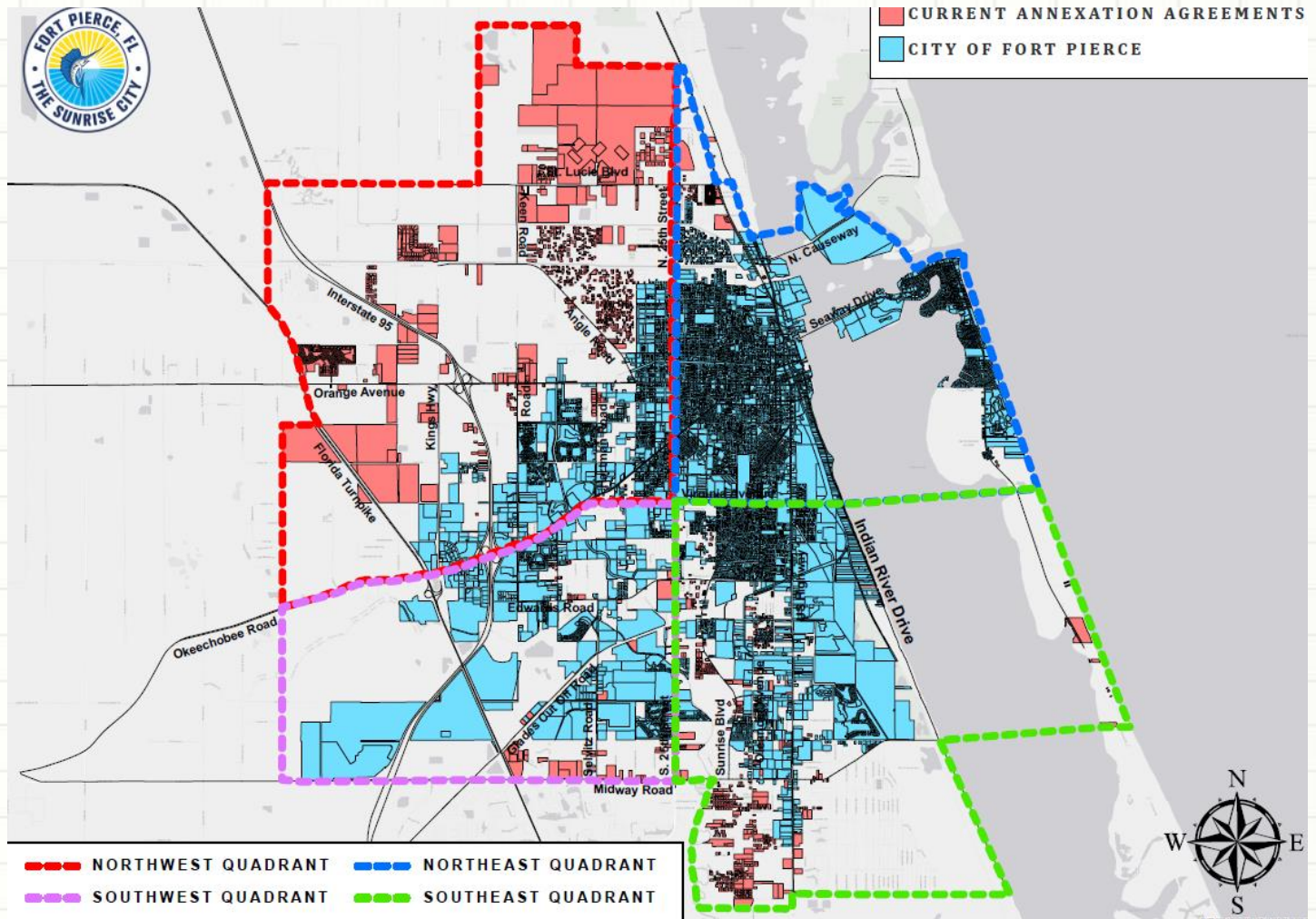
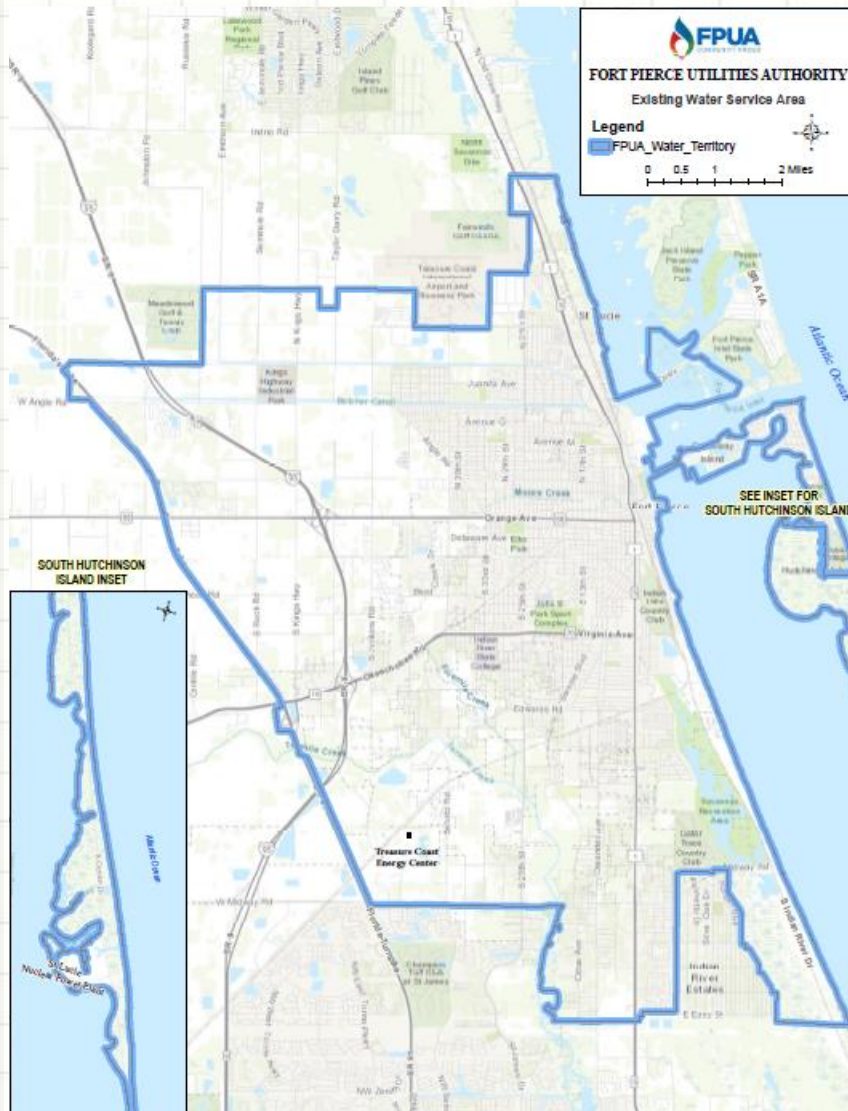
Interlocal Service Boundary Agreements (ISBA)

RESOLUTION NO. 18-R02

A RESOLUTION OF THE CITY COMMISSION OF THE CITY OF FORT PIERCE, FLORIDA, PURSUANT TO CHAPTER 171, PART II, FLORIDA STATUTES, THE INTERLOCAL SERVICE BOUNDARY AGREEMENT ACT, INITIATING THE PROCESS PROVIDED FOR THE PURPOSE OF ADDRESSING THE ISSUES MORE PARTICULARLY SET FORTH THEREIN; REPEALING ALL RESOLUTIONS IN CONFLICT HERewith AND PROVIDING FOR AN EFFECTIVE DATE.

Treasure Coast Regional Planning Council is working with the Planning Department to Update this Resolution and coordinate with SLC

Continuing the Progress



Annexation Overview and Progress

City Commission
July 12, 2021

