



# SURPLUS PROPERTY

FORT PIERCE CITY COMMISSION • JANUARY 19, 2021



# SURPLUS PROPERTY

Surplus property has no future municipal purpose which is determined by survey circulated through each department.

Declaring property as surplus is first step in disposition process.



**DECLARE  
SURPLUS**

**APPRAISAL**  
*if needed*

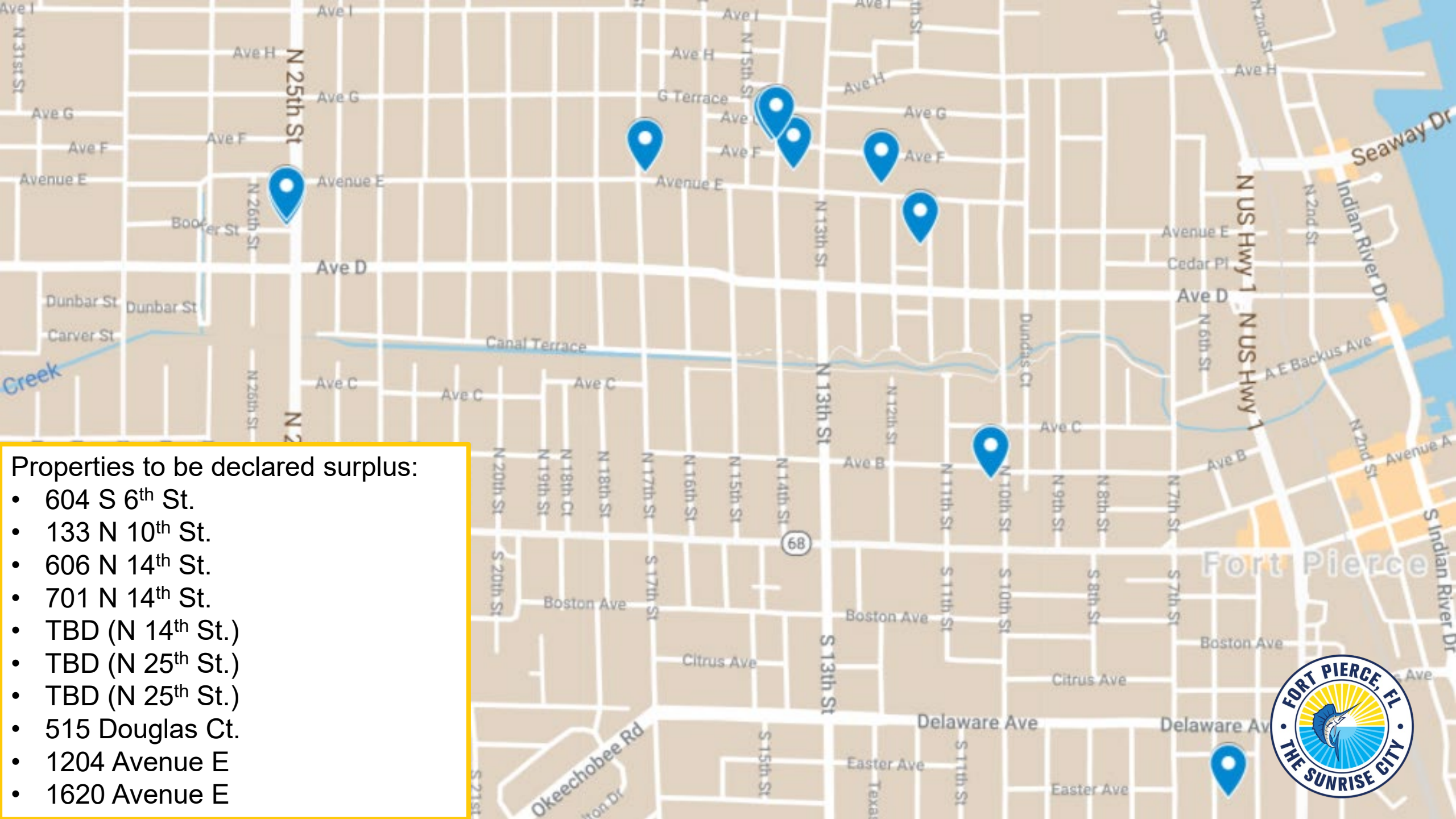
**SOLICIT BIDS**

**PLANNING  
BOARD**

**CITY  
COMMISSION**

Properties to be declared surplus:

- 604 S 6<sup>th</sup> St.
- 133 N 10<sup>th</sup> St.
- 606 N 14<sup>th</sup> St.
- 701 N 14<sup>th</sup> St.
- TBD (N 14<sup>th</sup> St.)
- TBD (N 25<sup>th</sup> St.)
- TBD (N 25<sup>th</sup> St.)
- 515 Douglas Ct.
- 1204 Avenue E
- 1620 Avenue E





WARE AVE

Delaware Ave

HAMPTON PL

S 6TH ST

S 5TH ST



**604 S. 6<sup>TH</sup> ST.**

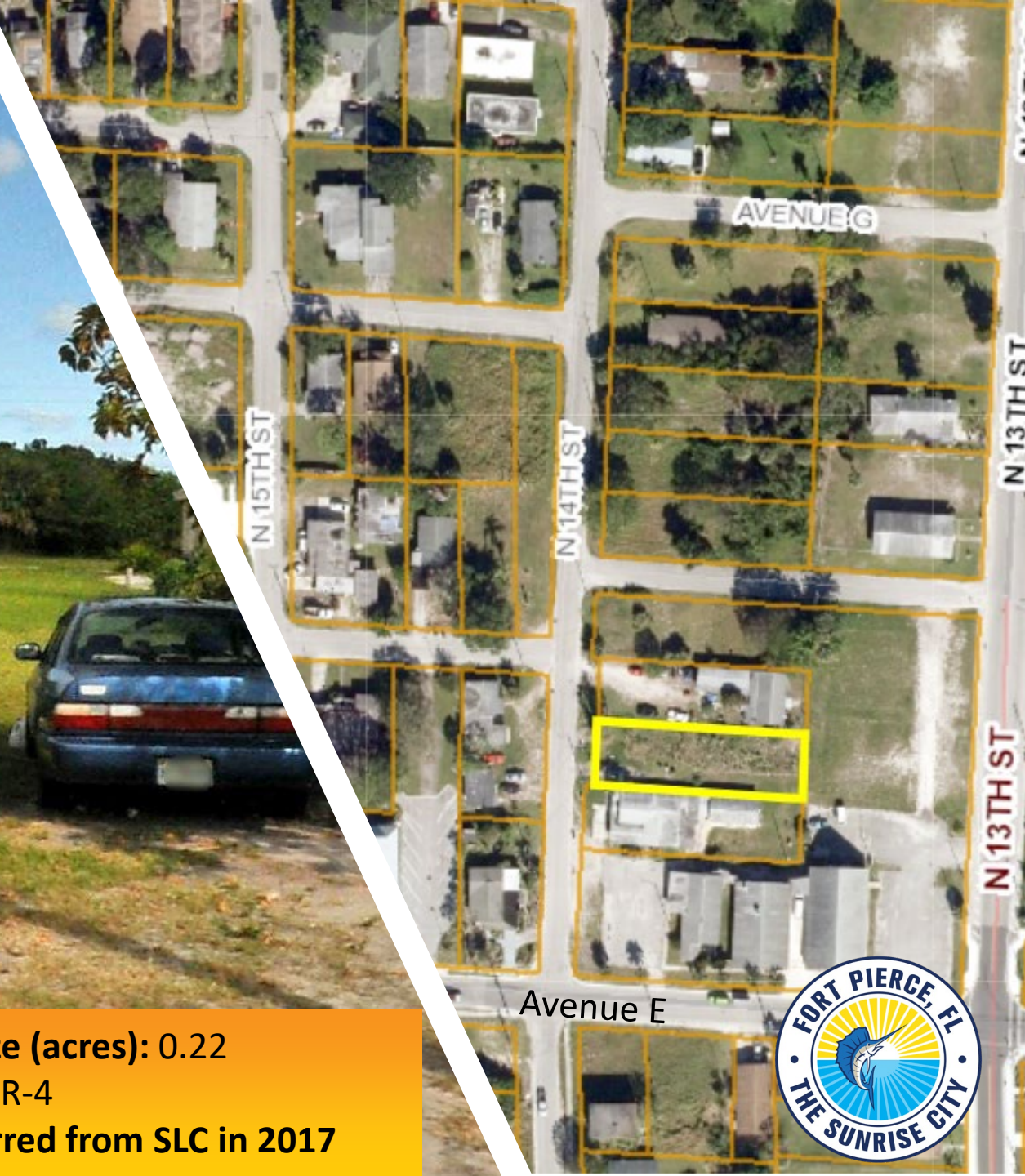
**Land Size (acres): 0.11  
Zoning: R-4  
Transferred from SLC in 2014**



**133 N. 10<sup>TH</sup> ST.**

**Land Size (acres): 0.22**  
**Zoning: R-4**  
**Transferred from SLC in 2017**





# 606 N. 14<sup>TH</sup> ST.

Land Size (acres): 0.22  
Zoning: R-4  
Transferred from SLC in 2017





# 701 N. 14<sup>TH</sup> ST. + ADJACENT PARCEL

Land Size (acres): 0.12 and 0.15  
Zoning: R-4  
Transferred from SLC in 2017 and 2014





# (2) PARCELS ON N 25<sup>TH</sup> ST

Land Size (acres): 0.14 and 0.14  
Zoning: C-3  
Transferred from SLC in 2018



**515 DOUGLAS CT.**

**Land Size (acres): 0.11**  
**Zoning: R-4**  
**Transferred from SLC in 2017**





**1204 AVENUE E**

Land Size (acres): 0.29  
Zoning: R-4  
Transferred from SLC in 2017





1620 AVENUE E



**1620 AVENUE E**

Land Size (acres): 0.1  
 Zoning: R-4  
 Transferred from SLC in 2014

# RECOMMENDATION

## Approve Resolution 21-R10

- Initiate disposition process
- Encourage infill development and improve housing stock

