

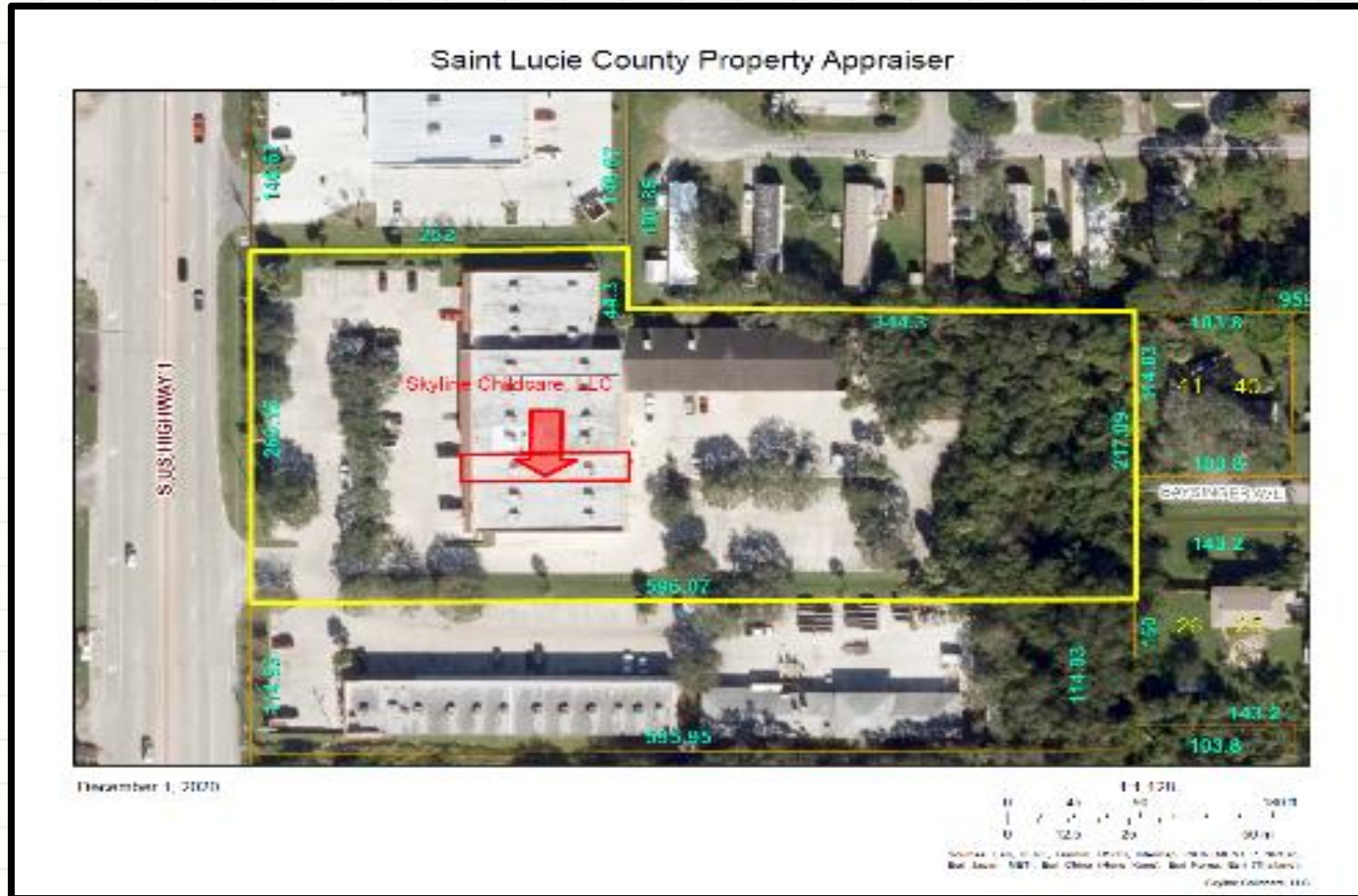
Conditional Use with No New Construction



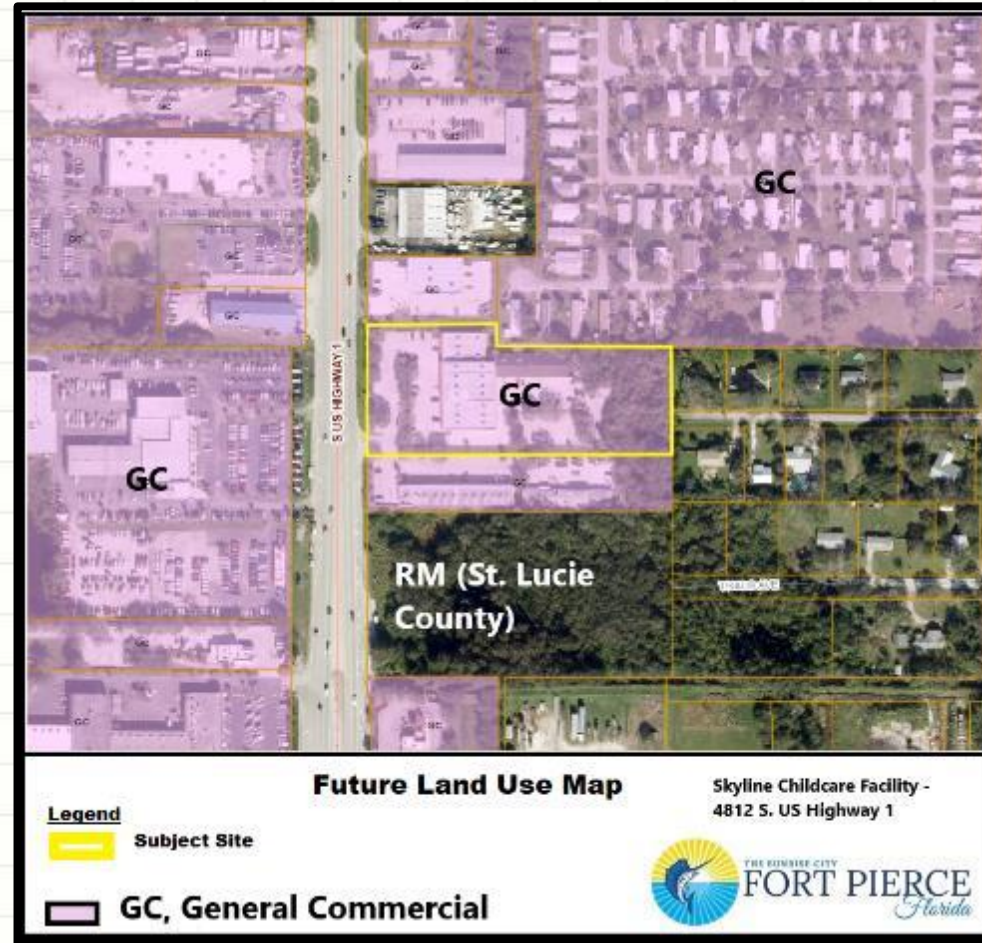
4812 S. US Highway 1



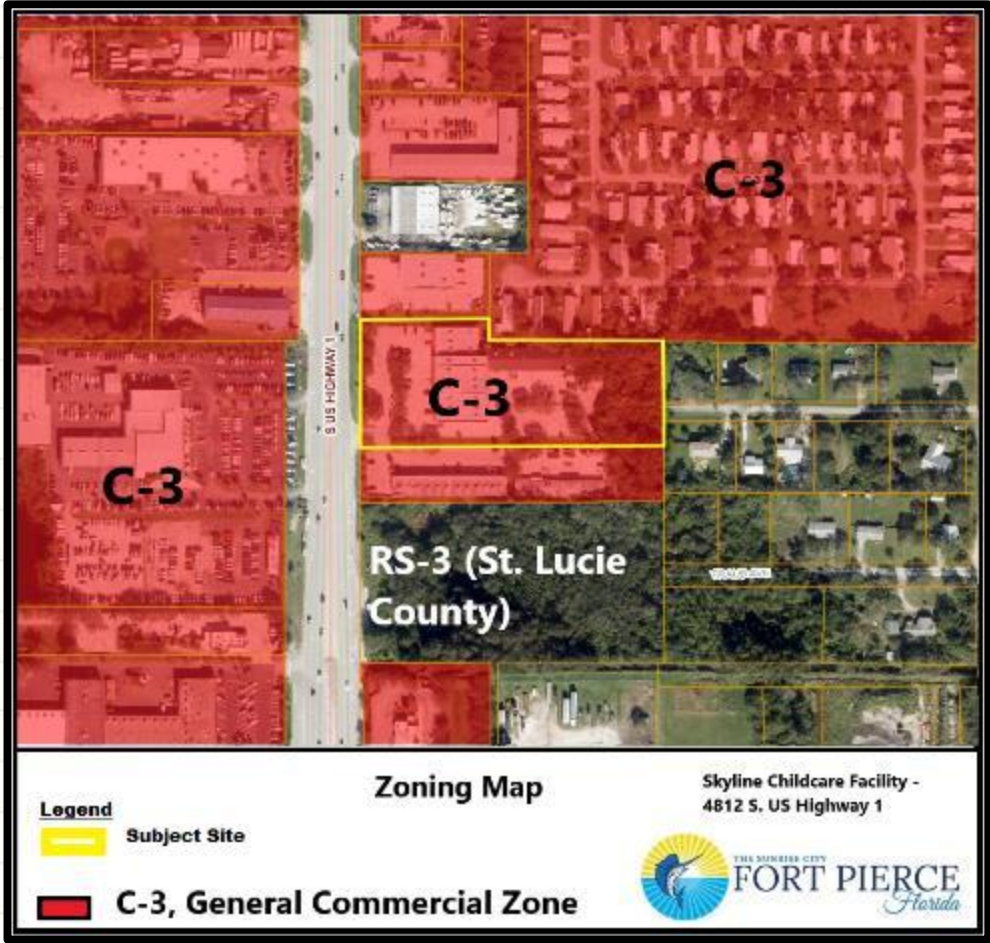
Location Map



FLU Map



Zoning Map



Skyline Childcare Facility

Consideration of a Conditional Use With No New Construction:

- Skyline Childcare Facility at 4812 S. US Highway 1
 - Approval of a Conditional Use to operate a Childcare Facility, offering before-school and after-school childcare. The Skyline Childcare Facility will provide homework assistance, story times, computer education, games, recreational dancing, arts and crafts, and learning activities.

Staff Recommendation

The proposed use presents the provision of a Childcare Facility/Daycare Center to the general public, representing a limited commercial use that is compatible with the surrounding neighborhood, and is generally consistent with the City's Comprehensive Plan and Land Development Code with appropriate restrictions. Therefore, Staff recommends **APPROVAL** of the Conditional Use with No New Construction.

Planning Board Recommendation

At the Planning Board December 8, 2020 meeting, recommended 6-0 **Approval** of the Conditional Use with the additional Condition to require Third-Party Liability Insurance.

CC Actions

Possible actions of the City Commission:

- APPROVAL of the proposed Conditional Use, and no changes
- APPROVAL of the proposed Conditional Use with changes
- DISAPPROVAL of the proposed Conditional Use

Conditional Use with No New Construction



4812 S. US Highway 1

