

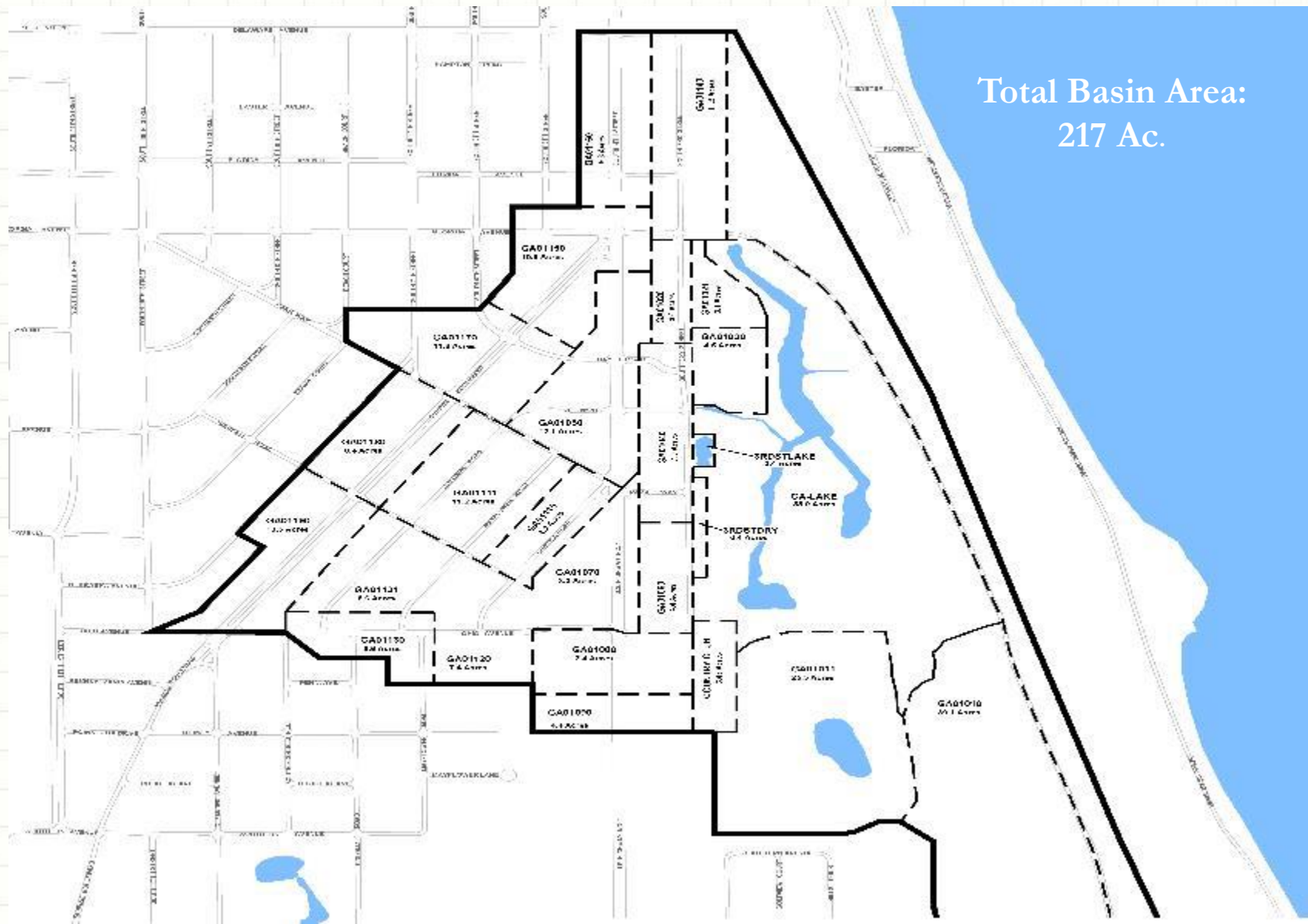


Georgia Avenue Basin Water Quality Improvements

Overview

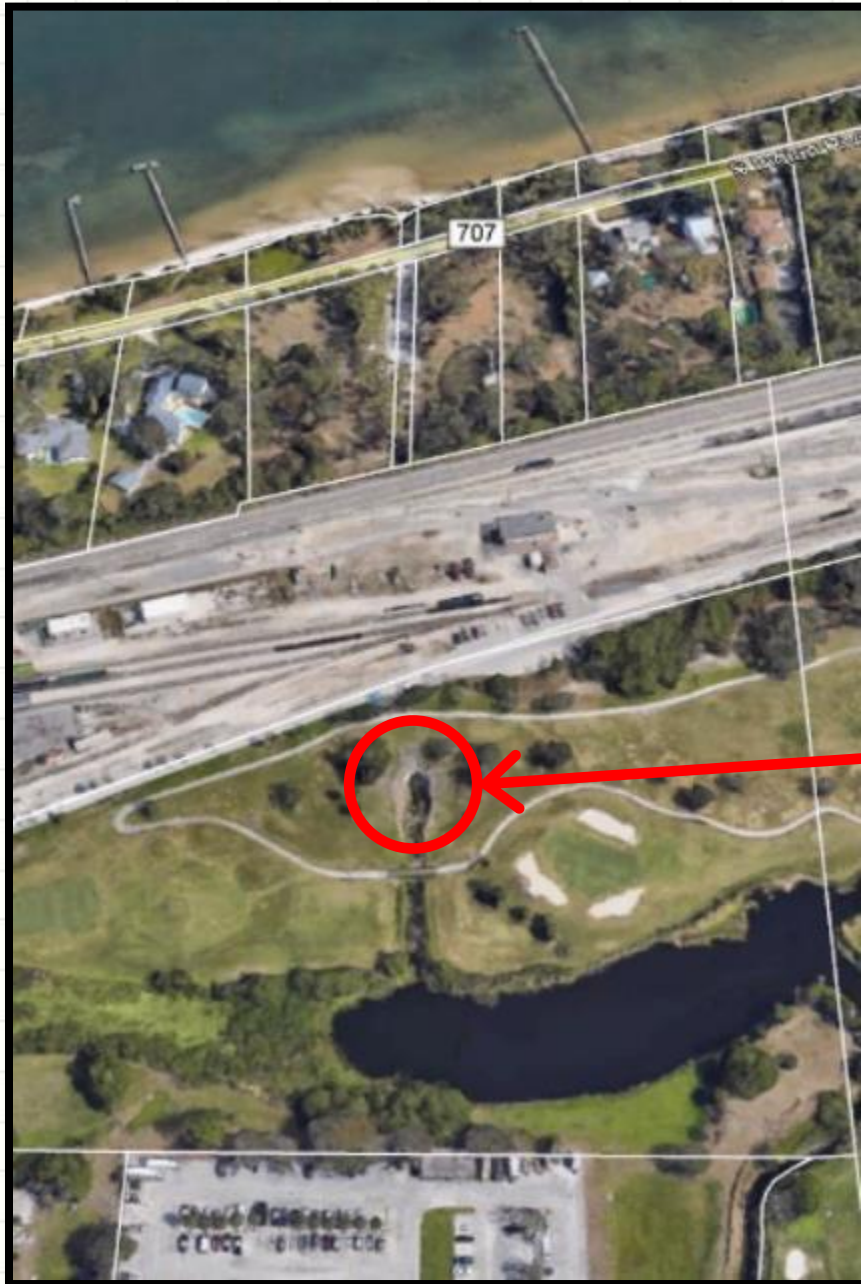


Drainage Basin

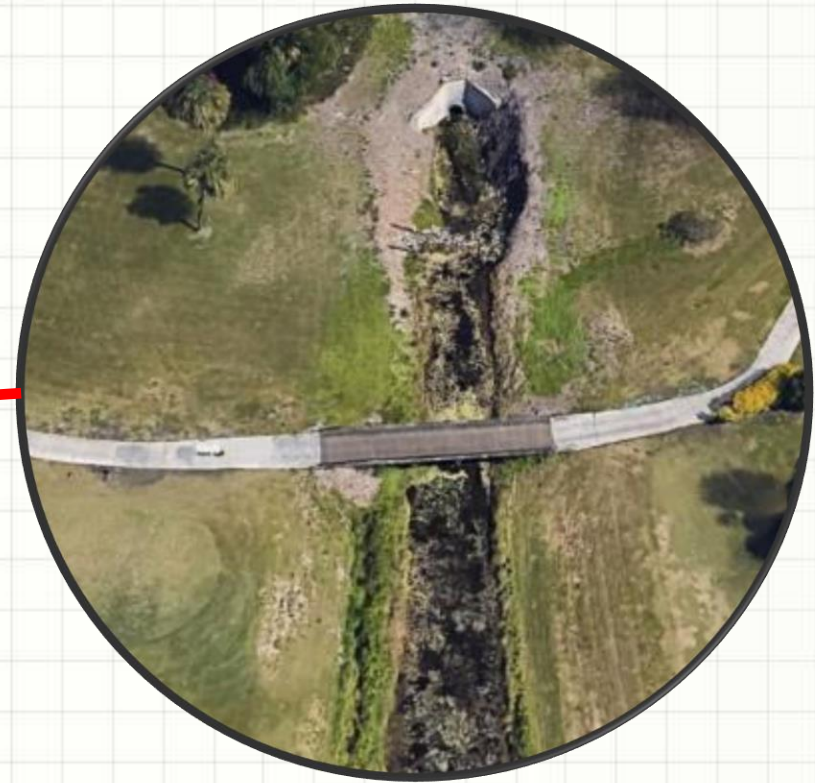


Total Basin Area:
217 Ac.

EXISTING CONDITIONS

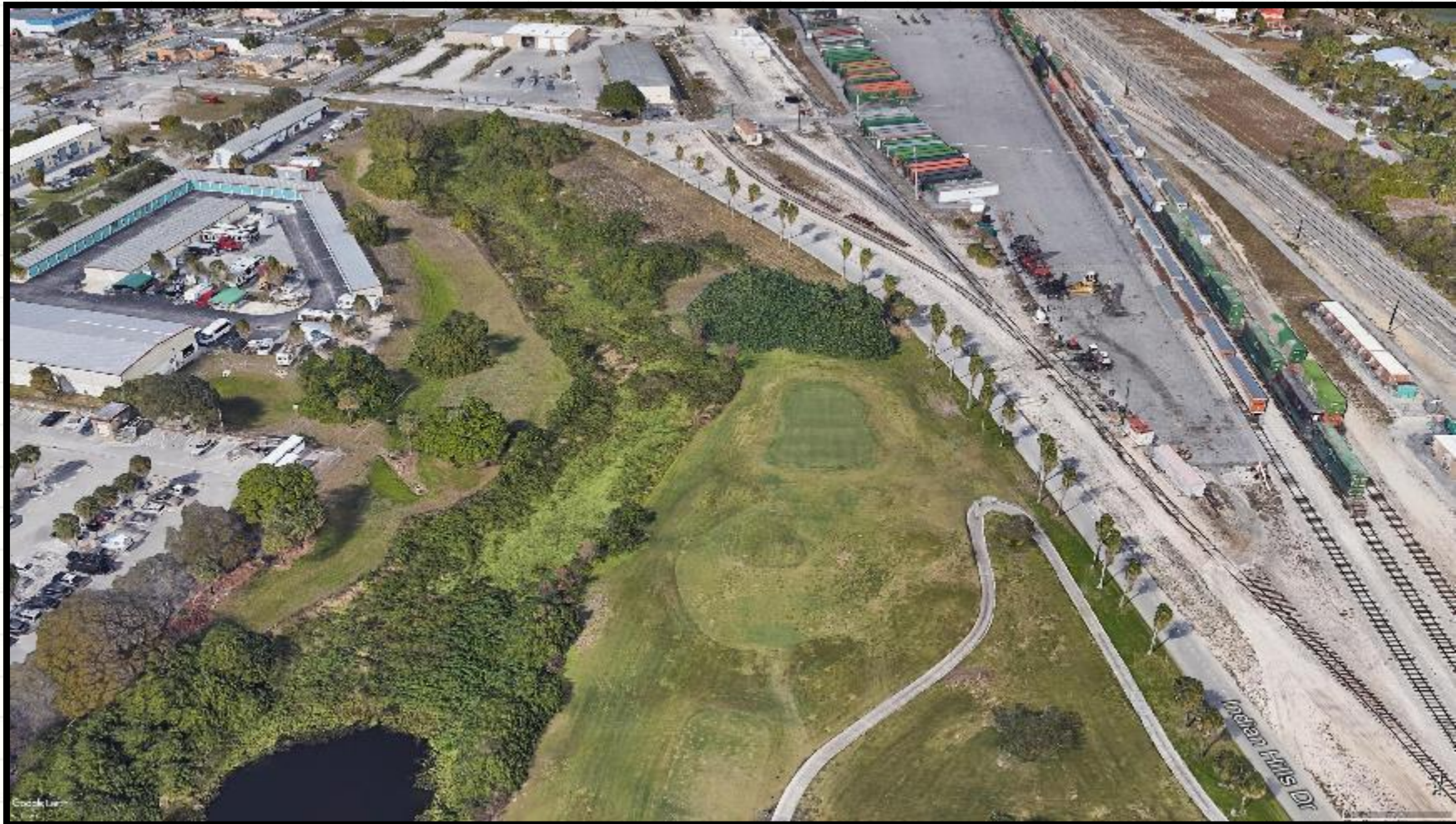


Currently, stormwater is discharged through an uncontrolled outfall directly to the Indian River Lagoon. The outfall pipe is a 60" RCP that has been lined and has an opening diameter of 54".



EXISTING CONDITIONS

The northern end of the lake system is overgrown with overgrown vegetation and exotics



PROPOSED IMPROVEMENTS

