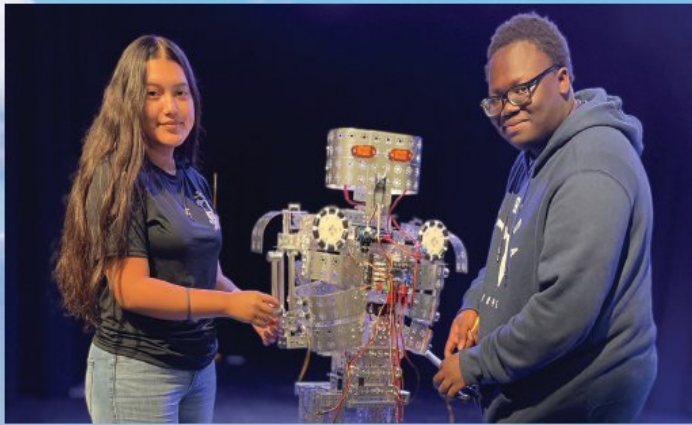


ST. LUCIE PUBLIC SCHOOLS TAKE A CLOSER LOOK





2021 Graduation Rates

A Historic Year for SLPS



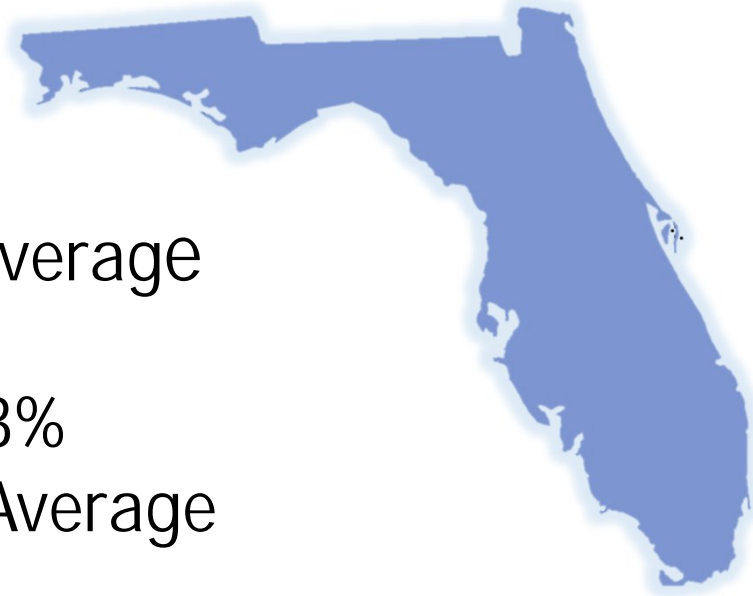
Graduation Rates – SLPS and High Schools

	Grad Rate 2019	Grad Rate 2020	Grad Rate 2021	Difference
SLPS	90.4%	93.2%	94.5%★	+1.3%
Comprehensive High Schools	96.8%	98.3%	98.6%★	+0.3%

Graduation Rates – Florida's Top 10 Districts

District	Graduation Rate	Number of Graduates
1. Lafayette	97.5%	79
2. Columbia	95.6%	523
3. Seminole	95.5%	4,966
3. Wakulla	95.5%	341
5. St. Johns	95%	3,148
5. Indian River	95%	1,242
7. St. Lucie	94.5%	3,143
8. Martin	94.1%	1,415
8. Suwannee	94.1%	352
10. Leon	94%	2,138

Graduation Rates



5th

ESE Graduation Rate - 92.3%
10% Higher Than The State Average

5th

Black Graduation Rate - 94.3%
7.2% Higher Than The State Average

7th

Hispanic Graduation Rate at 95.6%
6.2% Higher Than The State Average

18th

White Graduation Rate – 93.1%
1.3% Higher Than The State Average

Graduation Rates – Treasure Coast Districts

District	Graduation Rate	Number of Graduates
St. Lucie	94.5%	3,143
Indian River	95%	1,242
Martin	94.1%	1,415

Graduation Rates – Treasure Coast Districts

District	Graduation Rate	Number of Graduates	F/R Lunch Rate
St. Lucie	94.5%	3,143	65.3%
Indian River	95%	1,242	48.2%
Martin	94.1%	1,415	49.2%

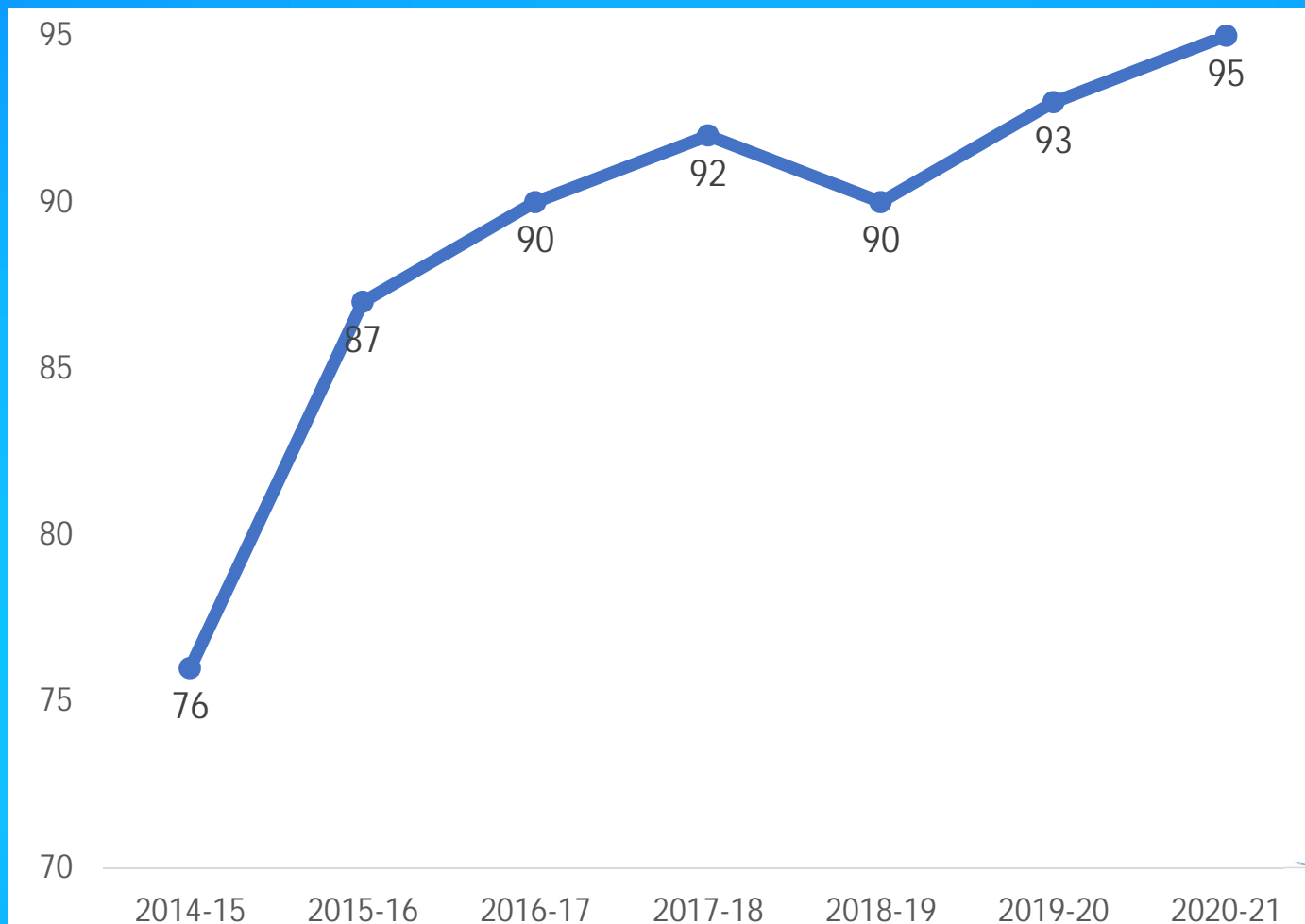
Graduation Rates – District Comparisons

District	Grad Rate	F/R Lunch Rate
St. Lucie	94.5%	65.3%
St. Johns	95%	18.7%
Volusia	91.9%	67.4%
Palm Beach	91%	65.1%
Sarasota	91%	43.5%
Brevard	90.6%	55.9%
Orange	90.4%	63.5%
Miami-Dade	90.1%	73.9%
Duval	89.6%	69.7%
Hillsborough	89.2%	60.9%
Broward	89.1%	56.2%
Manatee	85.1%	59.2%

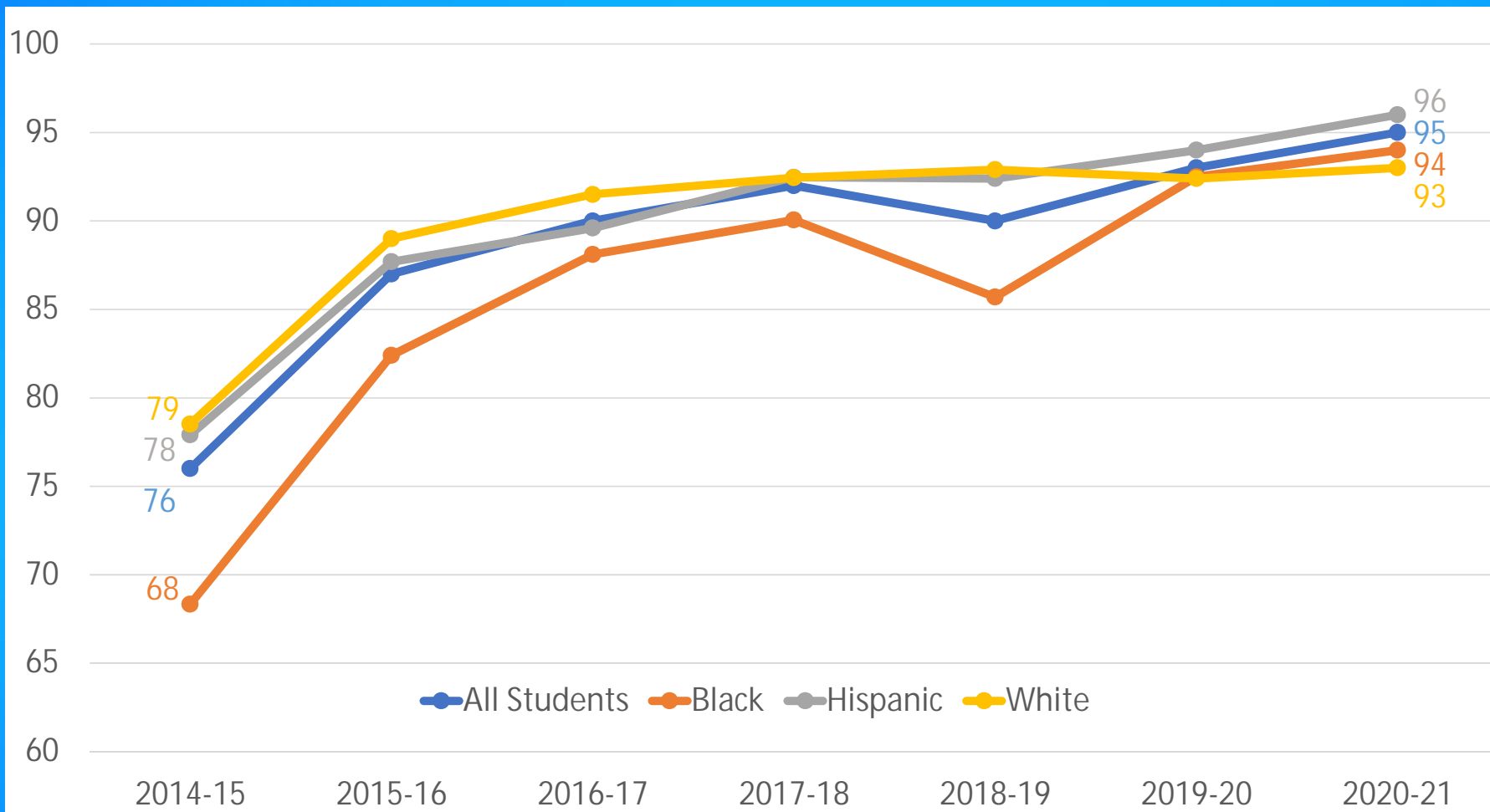
Graduation Rates – Treasure Coast High Schools

School	Grad Rate
Lincoln Park Academy	100%
Fort Pierce Central High School	99.6%
Treasure Coast High School	98.8%
St. Lucie West Centennial High School	98.8%
Port St. Lucie High School	98.5%
Jensen Beach High School	98%
Martin County High School	97.2%
Sebastian River High School	96.5%
Vero Beach High School	96.4%
South Fork High School	96.2%
Fort Pierce Westwood High School	95.9%

SLPS Graduation All Students Trendline



SLPS Graduation Rates – Closing the Gap



SLPS Graduation Rates – Closing the Gap

	2014-15	2015-16	2016-17	2017-18	2018-19	2019-20	2020-21	Increase over 6 Years
All Students	76%	87%	90%	92%	90%	93%	95%	+19%
Black	68%	82%	88%	90%	86%	93%	94%	+26%
Hispanic	78%	88%	90%	92%	92%	94%	96%	+18%
White	79%	89%	92%	92%	93%	92%	93%	+14%

SLPS Graduation Rates: Males by Race

SLPS	2014-15	2015-16	2016-17	2017-18	2018-19	2019-20	2020-21	Increase over 6 Years
Black Male	61%	79%	86%	86%	83%	90%	91%	+30%
Hispanic Male	78%	86%	87%	91%	92%	91%	94%	+16%
White Male	75%	85%	88%	90%	91%	91%	92%	+17%

SLPS Graduation Rates: Females by Race

SLPS	2014-15	2015-16	2016-17	2017-18	2018-19	2019-20	2020-21	Increase over 6 Years
Black Female	75%	86%	90%	94%	89%	96%	98%	+23%
Hispanic Female	82%	90%	92%	94%	93%	97%	97%	+15%
White Female	82%	93%	94%	95%	95%	94%	94%	+12%

Career & Technical Education

- ✓ Students Earn Industry Certifications Qualifying for Entry-Level Employment Upon Graduation
- ✓ Students Earn College Credit While In High School Through Articulation Agreements Aligned to College Pathways
- ✓ Students Receive On-The-Job Training and Job Placement Assistance



CTE

At-A-Glance

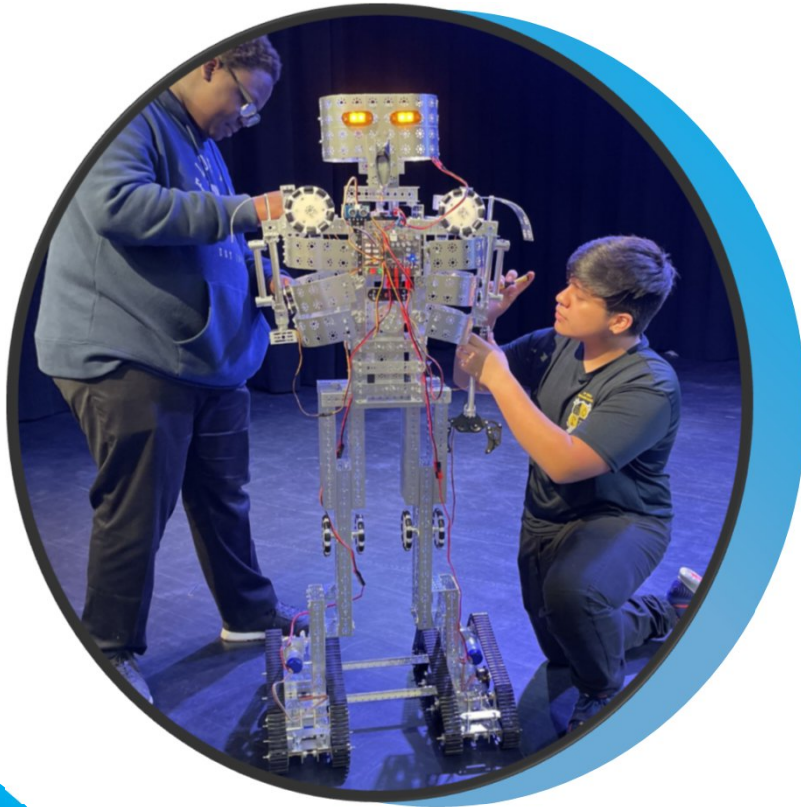
34 Career Academies
55 Programs

- IRSC/SLPS: 47 Articulation Agreements =
College Credit
IRSC/SLPS: Dual Enrollment Post Secondary
Adult Vocational (PSAV) Partnerships
- ✓ Automotive
 - ✓ Heating Ventilation and Air Conditioning (HVAC)
 - ✓ Welding



CTE

Current High School Enrollment



School Name	Total
Treasure Coast High	1767
Fort Pierce Central High	1749
Fort Pierce Westwood	1205
Port St Lucie High	1175
Performance Based	37
Lincoln Park Academy	219
St Lucie West Centennial	1595
Total	7,747

Industry Certifications Offered

Accredited Legal Professional

Adobe Certified Professional in Video Design
(Requires Premiere Pro and After Effects or
Photoshop)

Adobe Certified Professional in Visual Design
(Requires Photoshop and Illustrator or InDesign)

Adobe Certified Professional in Web Design
(Requires Dreamweaver and Animate or
Photoshop)

Agriculture Biotechnology Specialist

Agriculture Associate

Agriculture Systems Associate

Agritechnology Specialist

Animal Science Specialist

ASE Entry Level

Autodesk AutoCAD

Autodesk Dreamweaver

Autodesk Inventor

Autodesk Rivet

Biotechnician Assistant

Certified EKG Technician

Certified Electronic Health Record Specialists

Certified Food Protection Manager

Certified Food Safety Manager

Certified Medical Administrative Assistant

Certified Nursing Assistant

Certified Personal Trainer

Certified Pharmacy Technician

Certified Veterinary Assistant

Chief Architect Certified Apprentice

Child Development Associate

CIW Social Media Strategist

CIW Web Foundations

Emergency Medical Responder

Engineering Core

Entrepreneurship & Small Business

Florida Automobile Association Technician

Home Builders Institute CORE

Microsoft 365 Fundamentals

Microsoft Office Master

MTA Database Administration Fundamentals

MTA Mobility and Devices

MTA Networking Fundamentals

MTA Programming Using Python

MTA Security Fundamentals

MTA Windows OS Fundamentals

National ProStart Certificate of Achievement

NCCER Carpentry Level 1

Public Safety Telecommunicator

Quickbooks

RECF Pre-Engineering Certification

Small sUAS Safety Certification

Visual Line of Sight Systems Operator

High School CTE Programs

St. Lucie West Centennial High School
Early Childhood Education
Allied Health
Digital Video Technology
Culinary Arts
Criminal Justice
Game/Simulation/Animation
Visual Design
Digital Design
Outboard Marine Service Technology

Port Saint Lucie High School
Technical Design
Allied Health
Biomedical Sciences
Culinary Arts
Web Development
Automobile Maintenance & Light Repair
Fashion Marketing
Nursing Assistant
Building Construction Technology
TV Production Technology

Treasure Coast High School
Nursing Assistant
International Business
Engineering Technology
Allied Health
Industrial Biotechnology
Culinary Arts
Criminal Justice
Emergency Medical Responder
Global Logistics Operations
Advanced Manufacturing Technology

High School CTE Programs

Fort Pierce Central High School
Allied Health
Aerospace and Aviation
Culinary Arts
Criminal Justice
Web Development
Game Simulation Animation and Visual Design
Automobile Maintenance & Light Repair
Sports, Recreation & Entertainment Marketing

Fort Pierce Westwood Academy
Agritechnology
Veterinary Assisting
Digital Media/Multimedia Design
Allied Health
Health Unit Coordinator
Pharmacy Technician
Exercise Science
Culinary Arts
Criminal Justice
Digital Design
Applied Robotics
Commercial Art Technology
Gaming, Simulation, Animation, Programming

Lincoln Park Academy
Digital Media/Multimedia Design
Technical Design
Project Lead the Way (Pre-Engineering)
Applied Cyber Security

CTE: Industry Certifications 5 Year Trend



School Name	16-17	17-18	18-19	19-20	20-21
SLWCHS	492	583	810	696	814
TCHS	420	442	573	413	513
FPC	335	438	490	483	601
PSL	453	425	504	369	349
FPWWA	165	393	533	366	396
LPA	161	109	70	41	57
District Total	2,026	2,390	2,980	2,368	2,730

Fort Pierce Westwood Academy: The WEST Prep Magnet Modeled After Davenport High School

Located on a 60-acre site in East Polk County, Polk County Public Schools' (PCPS) the 2,500 student station, three-story compact school is designed to be adaptable to accommodate current and future needs of students. The 21st century academic environment also includes a gymnasium, performing arts center, and a stadium.

Additionally, the campus includes Career Tech Education (CTE) academies with a focus on visual and performing arts, digital design, modeling/simulation, hospitality/hotel management, culinary arts, agriculture/horticulture and landscape operations. The campus is also home to a robust JROTC program.

The project was designed to meet Green Globes standards and FLDOE's cost per student station mandate.



SCHENKELSHULTZ
ARCHITECTURE



St. Lucie
PUBLIC SCHOOLS





Visit to Davenport High School

Dr. Jonathan Prince

Dr. Helen Wild

Joseph Lezeau

Terence O'Leary

Marty Sanders

Brian Locatelli

Matthew Weber

Polk County School District staff

Davenport High School staff

Project Milestones



Fort Pierce Westwood Academy: The WEST Prep Manet

Dec 2021

Agreement for Castaldi Analyses Report *

Aug 2022

Agreement with Architect *

Dec 2022

Master Agreement with Contractor *

March 2023

Schematic Design *

Oct 2023

Project Agreement with Contractor *

Nov 2023

Start of Construction

Nov 2025

Certificate of Occupancy *

Jan 2026

School Opening

* Board approval item



QUESTIONS ?

