



**WALKER**  
CONSULTANTS

# Proposed Parking Ordinance Workshop

---

February 28, 2022

9:00 a.m.

City of Fort Pierce, FL

# OUR TEAM



**Jim Corbett, CAPP**  
Director of Planning



**Tom Szubka, CAPP, CPP**  
Senior Consultant



## Downtown Level of Service (LOS)

### LEGEND

 Off-Street Public Parking Facilities within LOS Area

### Level of Service (LOS)

-  **A** LOS A - **400'** Walking Radius ( $\approx$  1 min 30 sec)
-  **B** LOS B - **800'** Walking Radius ( $\approx$  3 min)
-  **C** LOS C - **1,200'** Walking Radius ( $\approx$  4 min 30 sec)

Average Walker Speed: 3.1 mph (4.6 ft/s)

### Level of Service Parking Inventory Totals

LOS	Off-Street	On-Street	Total
A	92	115	<b>207</b>
B	919	306	<b>1,225</b>
C	197	29	<b>226</b>
<b>Total</b>	<b>1,208</b>	<b>450</b>	<b>1,658</b>



# LEVEL OF SERVICE

# Downtown Paid Parking Zone

## LEGEND

- Off-Street Public Parking Facilities
- On-Street Parking

### Paid Parking Zone Inventory Totals

Off-Street	On-Street	Total
273	421	<b>694</b>

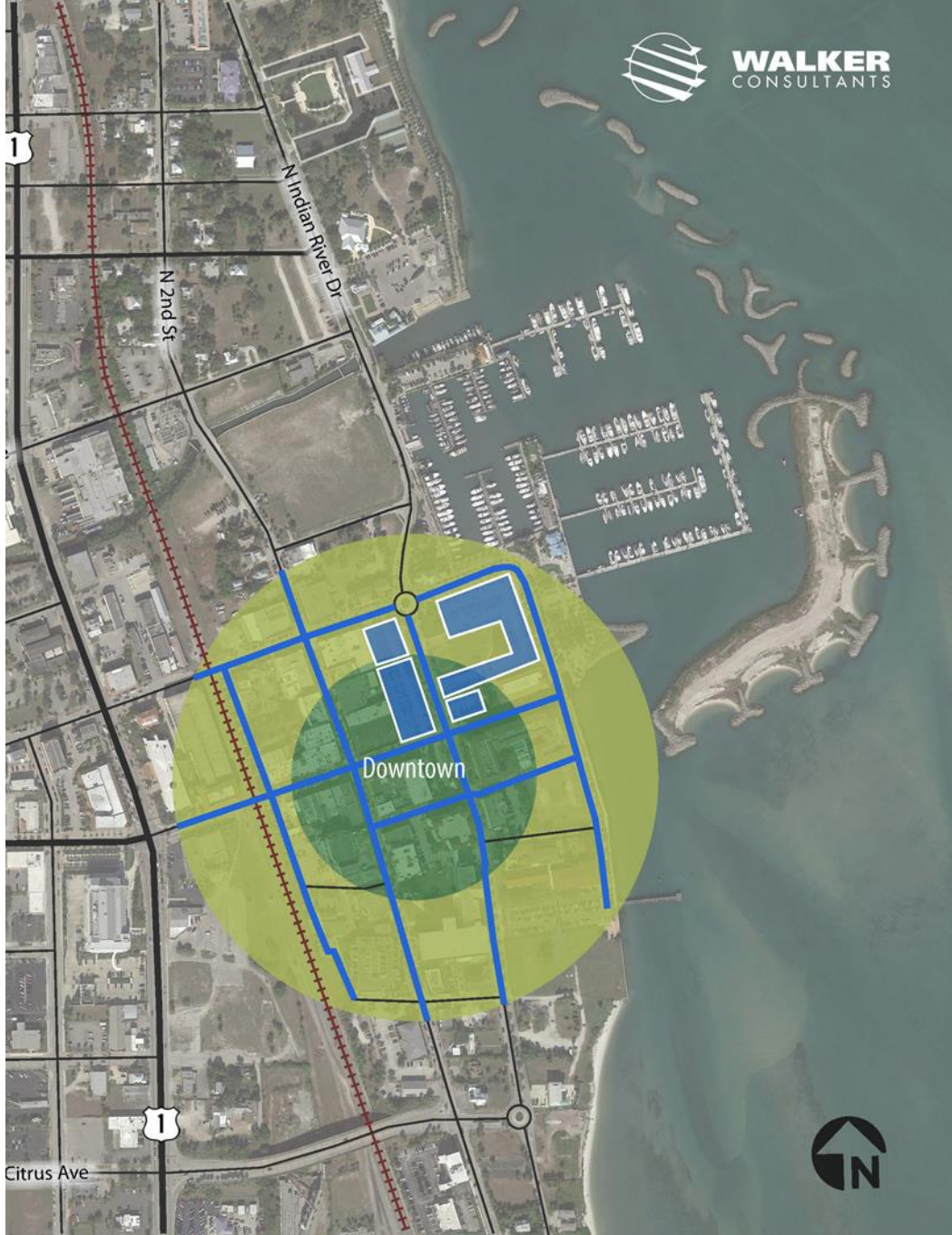
### Level of Service (LOS)

- **A** LOS A - **400'** Walking Radius (≈ 1 min 30 sec)
- **B** LOS B - **800'** Walking Radius (≈ 3 min)
- **C** LOS C - **1,200'** Walking Radius (≈ 4 min 30 sec)

Average Walker Speed: 3.1 mph (4.6 ft/s)



# PAID PARKING

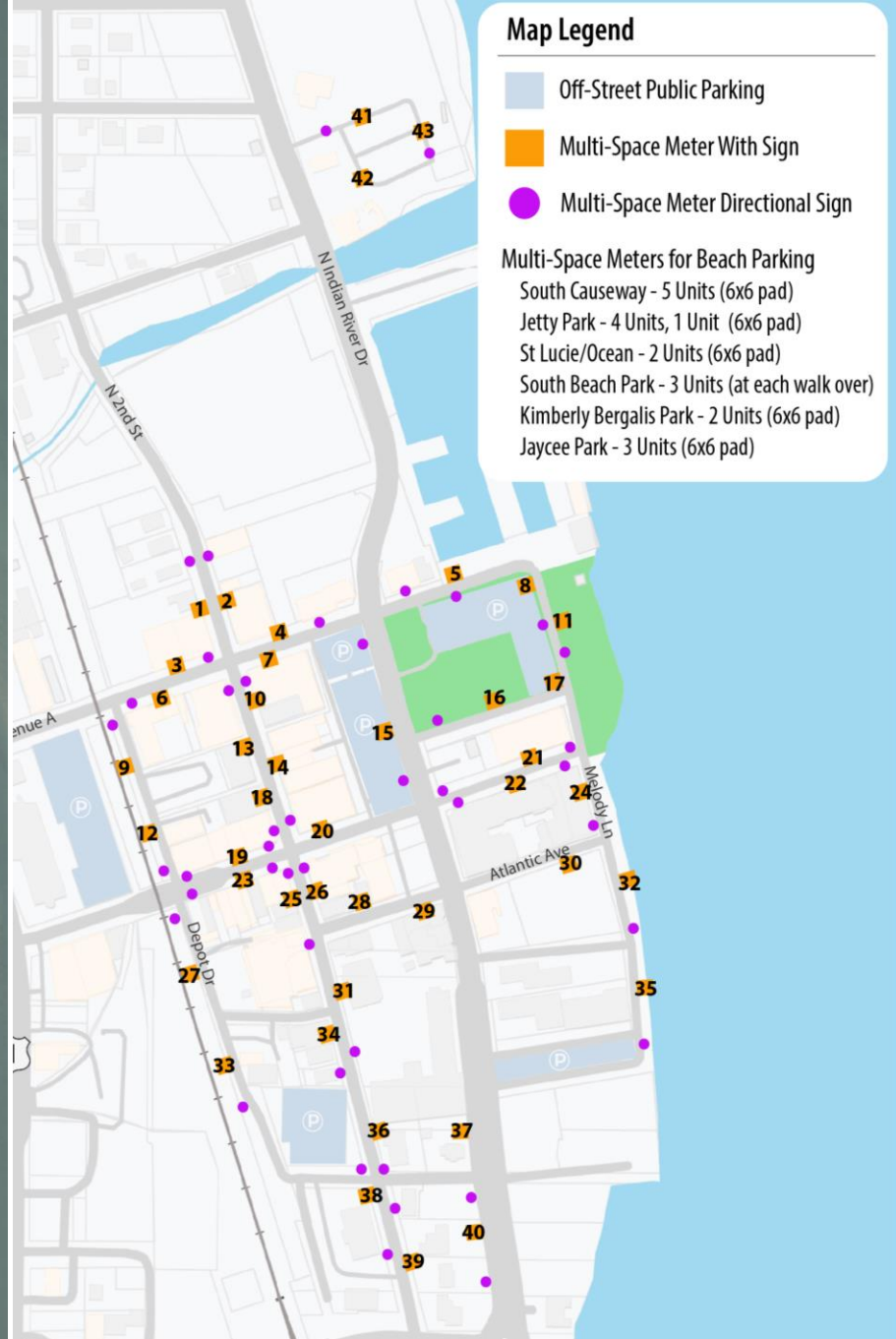


### Map Legend

-  Off-Street Public Parking
-  Multi-Space Meter With Sign
-  Multi-Space Meter Directional Sign

#### Multi-Space Meters for Beach Parking


- South Causeway - 5 Units (6x6 pad)
- Jetty Park - 4 Units, 1 Unit (6x6 pad)
- St Lucie/Ocean - 2 Units (6x6 pad)
- South Beach Park - 3 Units (at each walk over)
- Kimberly Bergalis Park - 2 Units (6x6 pad)
- Jaycee Park - 3 Units (6x6 pad)




# PAID PARKING


# King's Landing Level of Service (LOS)


## LEGEND

 Off-Street Public Parking Facilities within LOS Area

## Level of Service (LOS)

 **A** LOS A - 400' Walking Radius (≈ 1 min 30 sec)

 **B** LOS B - 800' Walking Radius (≈ 3 min)

 **C** LOS C - 1,200' Walking Radius (≈ 4 min 30 sec)

Average Walker Speed: 3.1 mph (4.6 ft/s)

## King's Landing

### Level of Service Parking Inventory Totals

LOS	Off-Street	On-Street	Total
A	203	0	<b>89</b>
B	233	25	<b>258</b>
C	828	15	<b>843</b>
<b>Total</b>	<b>1,264</b>	<b>40</b>	<b>1,190</b>

## Downtown

### Level of Service Parking Inventory Totals

LOS	Off-Street	On-Street	Total
A	92	115	<b>207</b>
B	919	306	<b>1,225</b>
C	197	29	<b>226</b>
<b>Total</b>	<b>1,208</b>	<b>450</b>	<b>1,658</b>



# KINGS LANDING EFFECT

# COMPONENTS OF PARKING ORDINANCE STRUCTURE



**ADMINISTRATIVE  
AUTHORITY**

**FEE AUTHORITY  
AND TYPES**

**PAID PARKING  
REGULATION**

**PARKING  
PERMITS**

**PENALTIES AND  
ENFORCEMENT**

# COMPONENTS OF PARKING ORDINANCE STRUCTURE

1

## ADMINISTRATIVE AUTHORITY

Title

Applicability

Definitions

Authority to Issue Parking Citations

Paid Parking Zones



# COMPONENTS OF PARKING ORDINANCE STRUCTURE

2

## FEE AUTHORITY AND TYPES

- Fee Resolution
- Permits
- Late Penalties
- Immobilization



# COMPONENTS OF PARKING ORDINANCE STRUCTURE

3

## PAID PARKING REGULATION

- Improper Parking
- Hours of Operation
- Loading and Unloading
- Electric Vehicle Charging
- Special Events



# COMPONENTS OF PARKING ORDINANCE STRUCTURE

4

## PARKING PERMITS

- Business
- Contractor
- Marina
- Resident



# COMPONENTS OF PARKING ORDINANCE STRUCTURE

5

## PENALTIES AND ENFORCEMENT

Citation Issuance

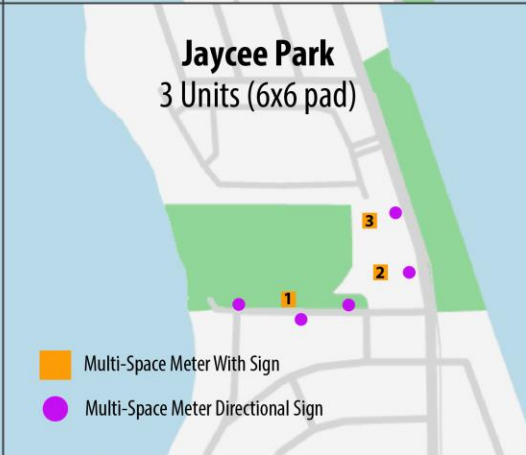
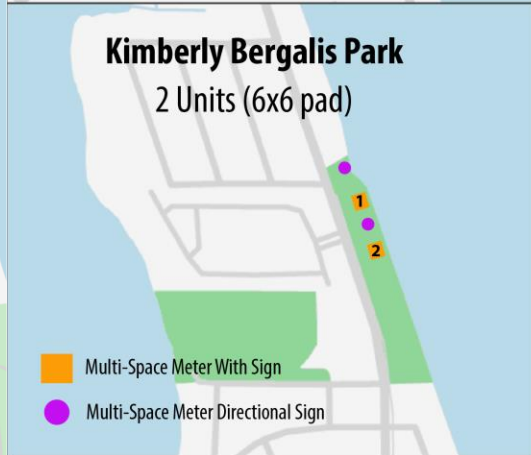
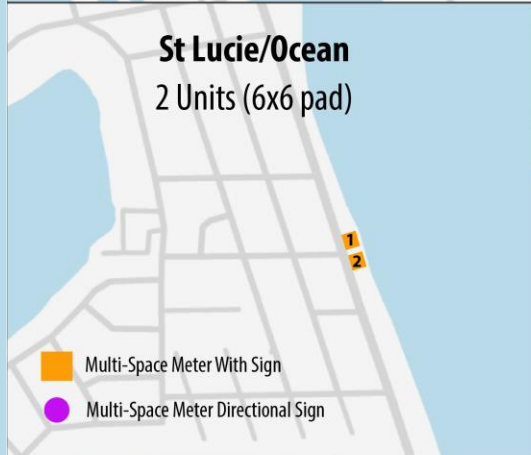
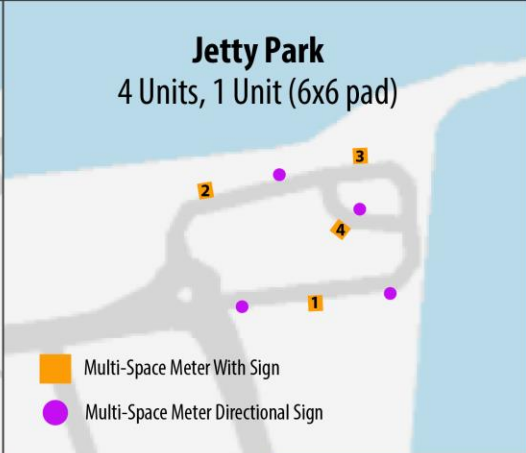
Penalties

Contesting a Citation

Payment

Adjudication





# PAID PARKING (BEACH)



Comment