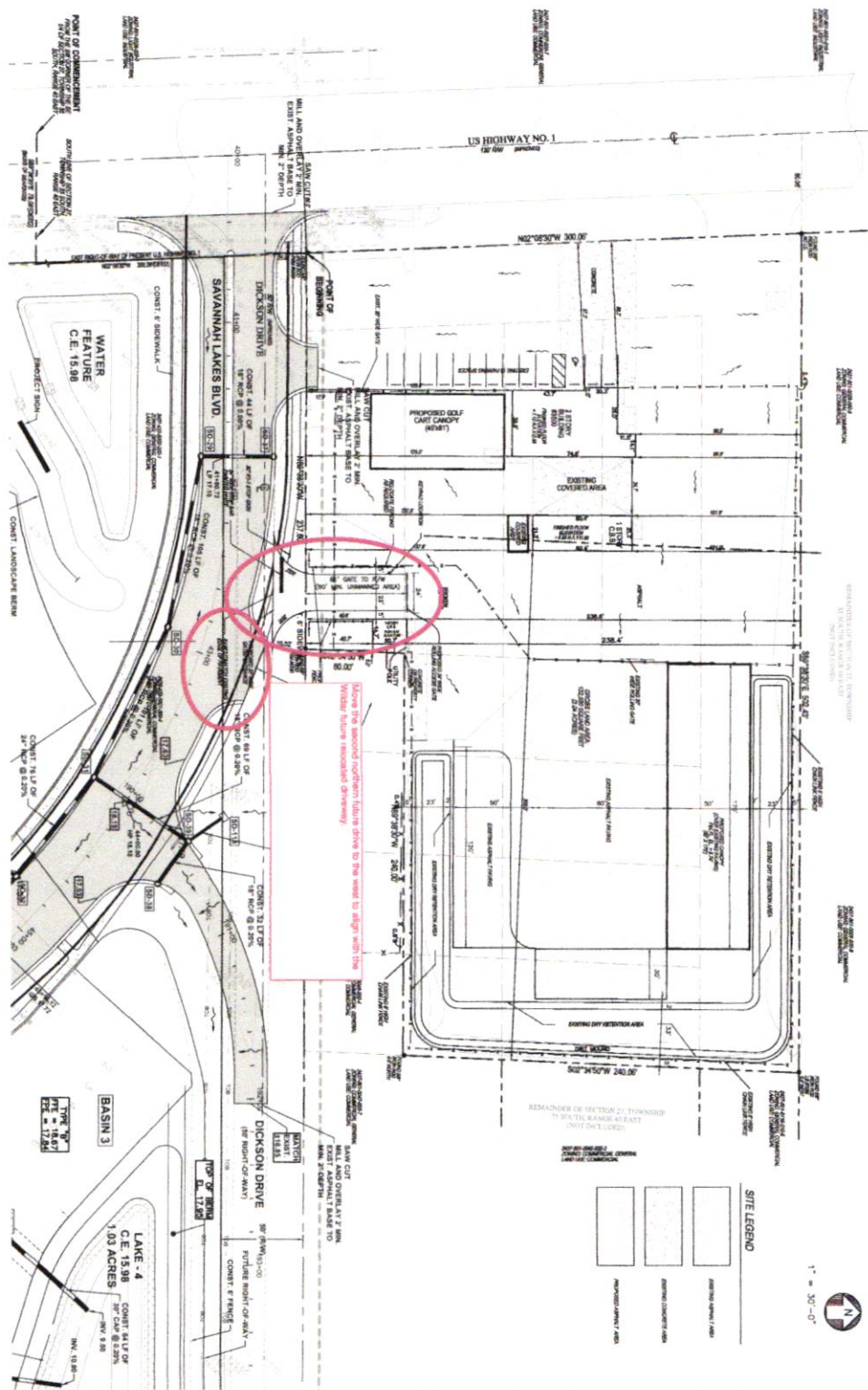


0510 211524
 Pel Mat 1

THIS DOCUMENT IS THE PROPERTY OF THE CONSULTING ENGINEER AND IS NOT TO BE REPRODUCED, COPIED, OR TRANSMITTED IN ANY FORM OR BY ANY MEANS, ELECTRONIC OR MECHANICAL, WITHOUT THE WRITTEN PERMISSION OF THE CONSULTING ENGINEER. THE CONSULTING ENGINEER'S LIABILITY IS LIMITED TO THE SERVICES PROVIDED HEREIN. THE CONSULTING ENGINEER DOES NOT WARRANT OR REPRESENT THAT THE INFORMATION CONTAINED HEREIN IS COMPLETELY ACCURATE OR THAT THE PROJECT WILL BE COMPLETED AS SHOWN. THE CONSULTING ENGINEER'S LIABILITY IS LIMITED TO THE SERVICES PROVIDED HEREIN. THE CONSULTING ENGINEER DOES NOT WARRANT OR REPRESENT THAT THE INFORMATION CONTAINED HEREIN IS COMPLETELY ACCURATE OR THAT THE PROJECT WILL BE COMPLETED AS SHOWN.



Stephen Cooper, P.E. #811

DATE	DESCRIPTION
MAY 2021	DESIGNED BY: SJC
	CHECKED BY: SJC
	DATE: 5/11/21
	SCALE: 1"=50'-0"
	PROJECT NO. 0510 211524
	DRAWING NO. S1

WILDAR GOLF CART SALES AND STORAGE

ST. LUCIE COUNTY, FLORIDA

SCOPE

STEPHEN COOPER, P.E. & ASSOCIATES, INC.
 CONSULTING ENGINEER

CIVIL ENGINEERING * SITE PLANNING * ENVIRONMENTAL PERMITTING

7800 SOUTH FEDERAL HIGHWAY
 FORT ST. LUCIE, FLORIDA 34952
 TEL: 1-772-336-9933

FLORIDA CERTIFICATE OF AUTHORIZATION NO. 0000008

NO.	REVISION	DATE
1		
2		
3		
4		
5		
6		
7		
8		
9		
10		