

CORAL SANDS
@ HUTCHINSON
ISLAND

CORAL SANDS @ HUTCHINSON ISLAND



CORAL SANDS @ HUTCHINSON ISLAND

PALM HAVEN S/D-UNIT 1-BLK 4
 LOTS 2, 3, 4, 5, 6, 7, 8, 9, 10, 11
 AND 12

Land Use: RM

Zoning (Current): R4A

Zoning Proposed: PD

Site Density

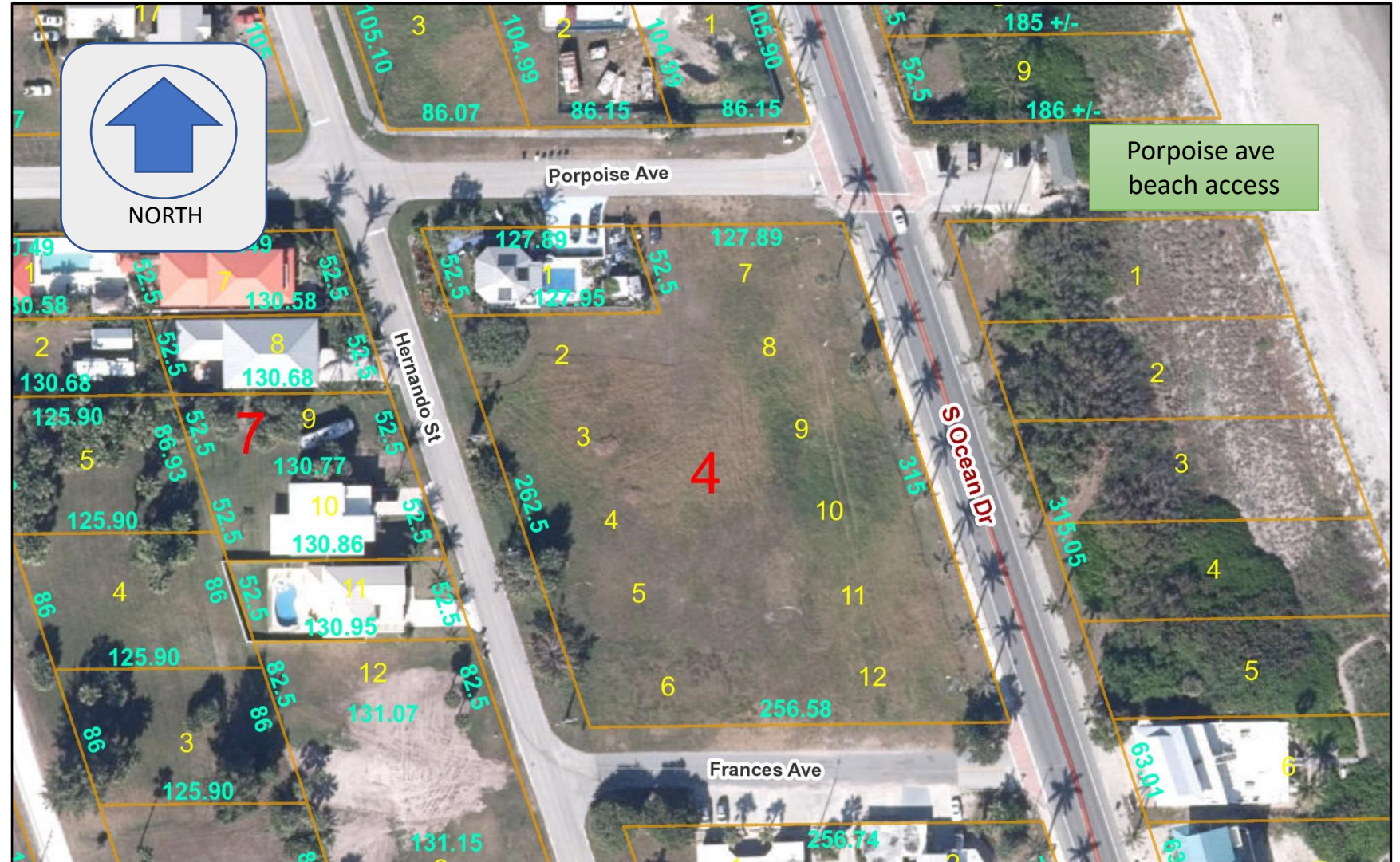
(per overlay restrictions)

13 units
 (8 units/ acre)

Site Density

(proposed)

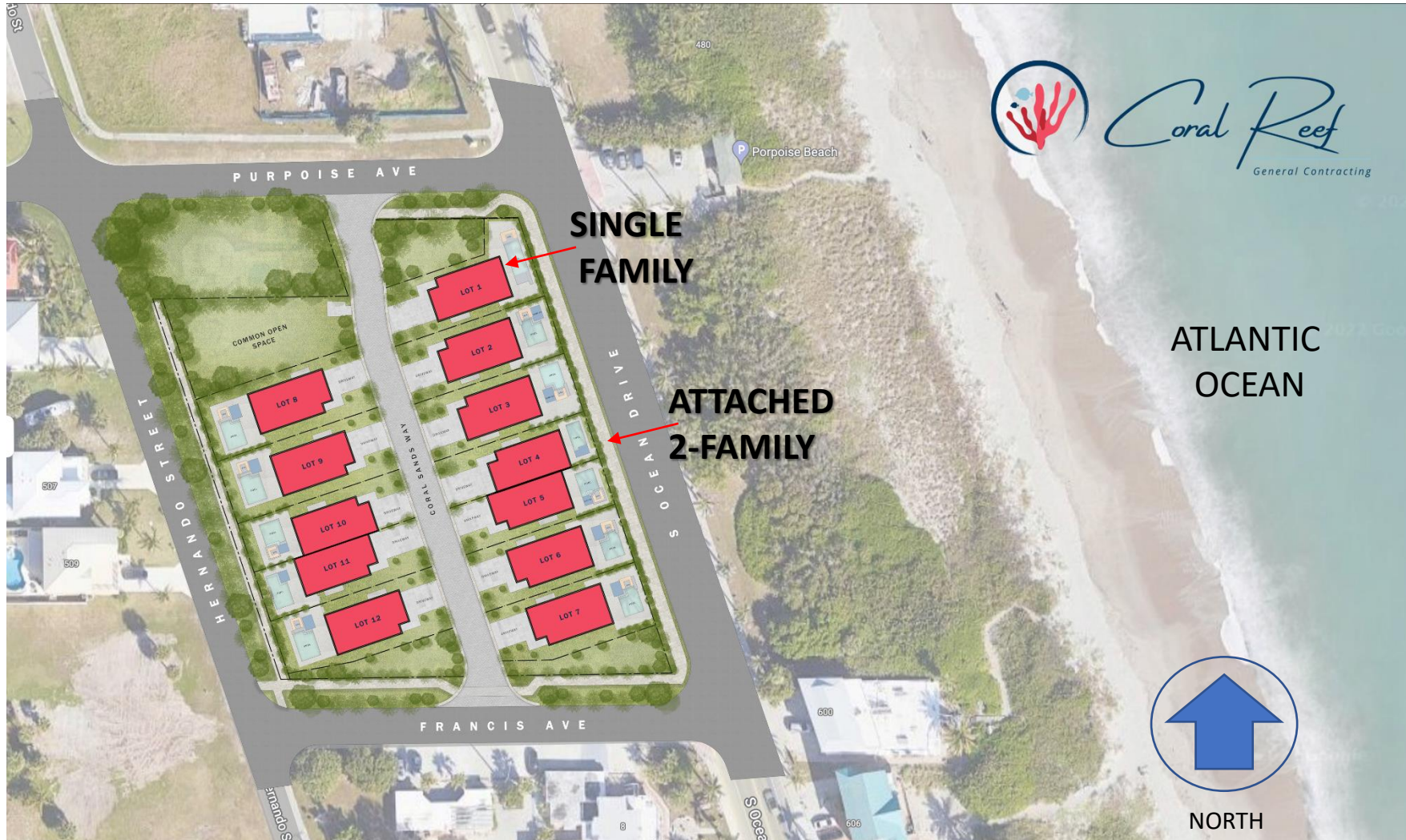
12 units



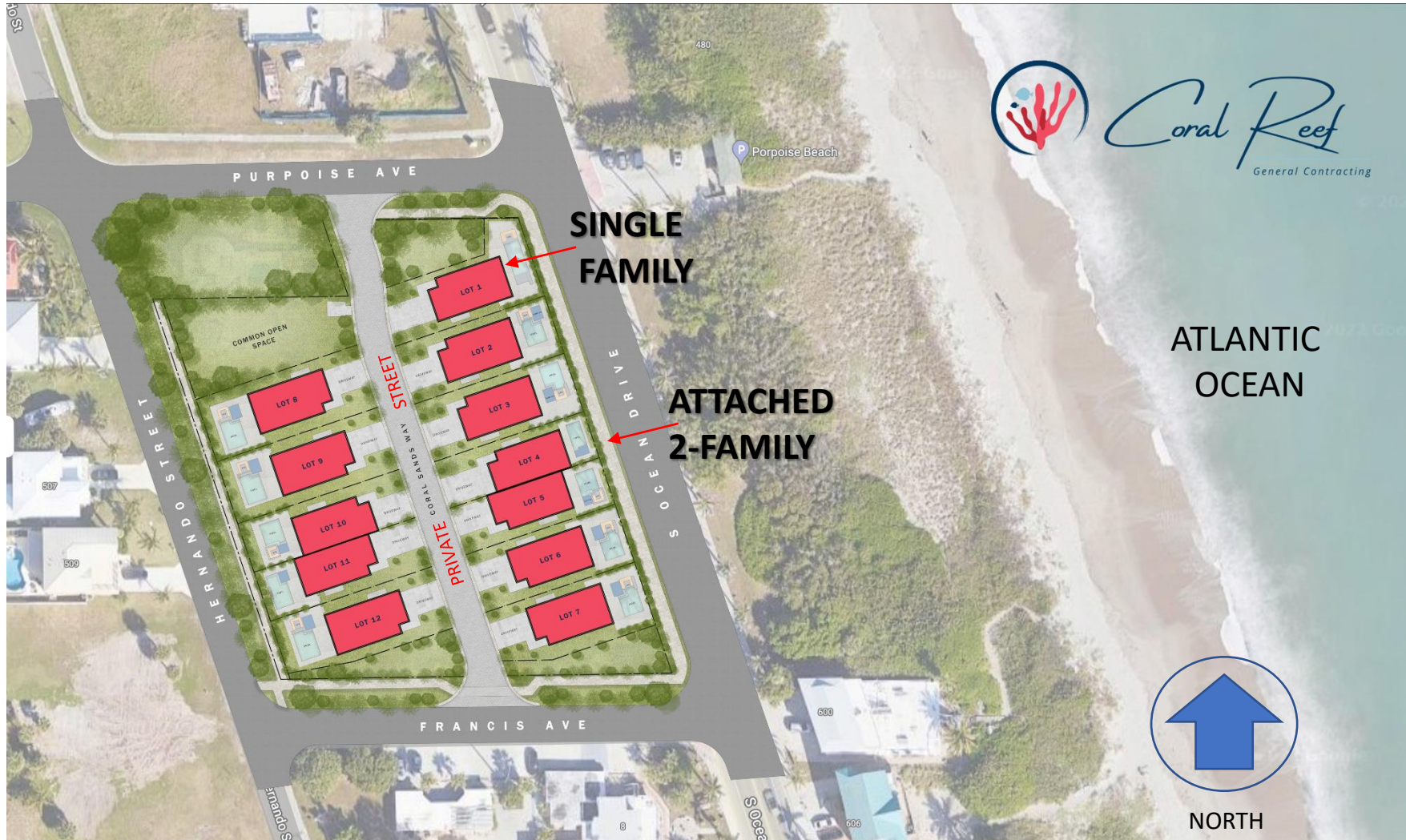
CORAL SANDS @ HUTCHINSON ISLAND



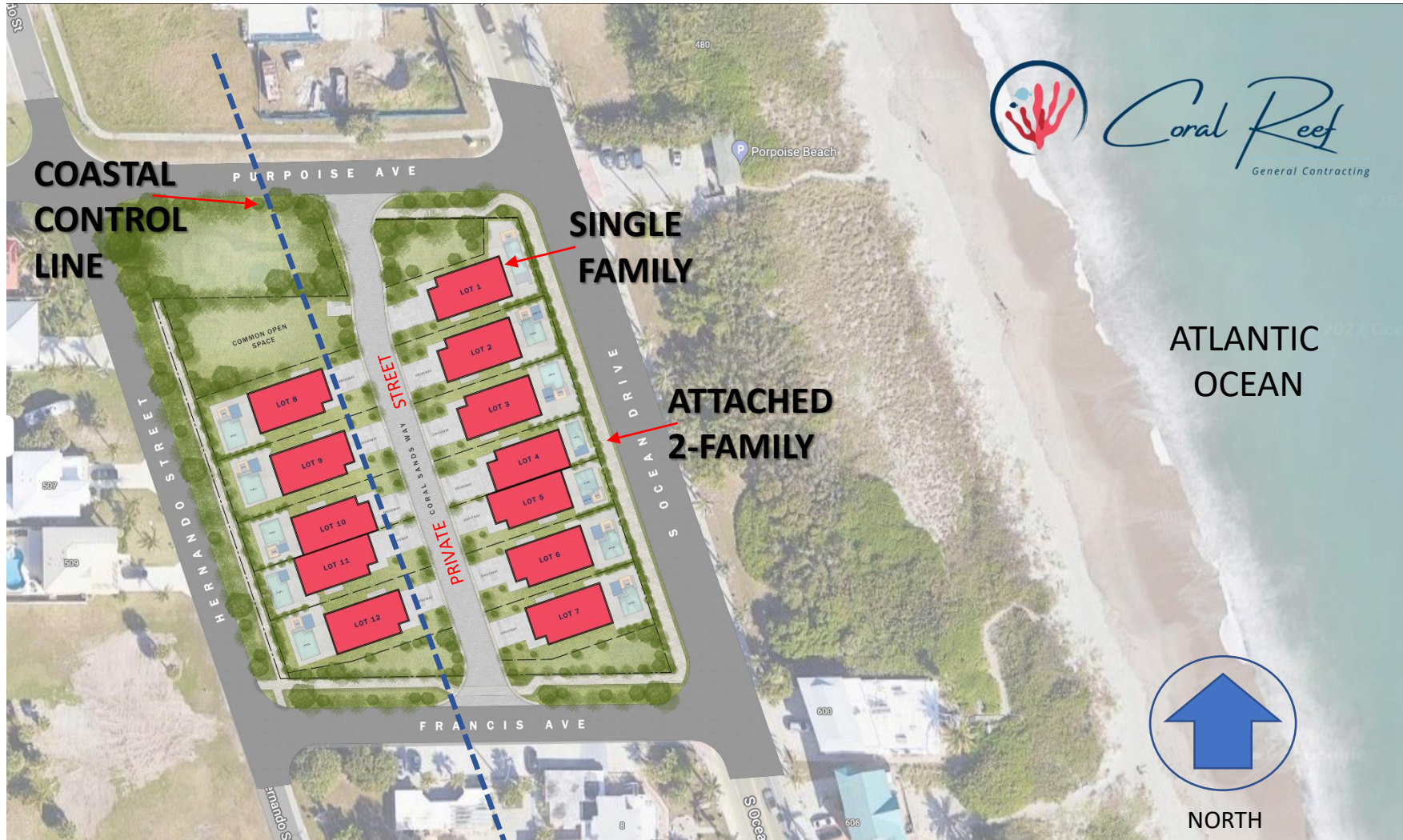
CORAL SANDS @ HUTCHINSON ISLAND



CORAL SANDS @ HUTCHINSON ISLAND



CORAL SANDS @ HUTCHINSON ISLAND



CORAL SANDS @ HUTCHINSON ISLAND



West (Interior) Elevation



South Elevation



East (Oceanside) Elevation

CORAL SANDS @ HUTCHINSON ISLAND



West (Interior) Elevation

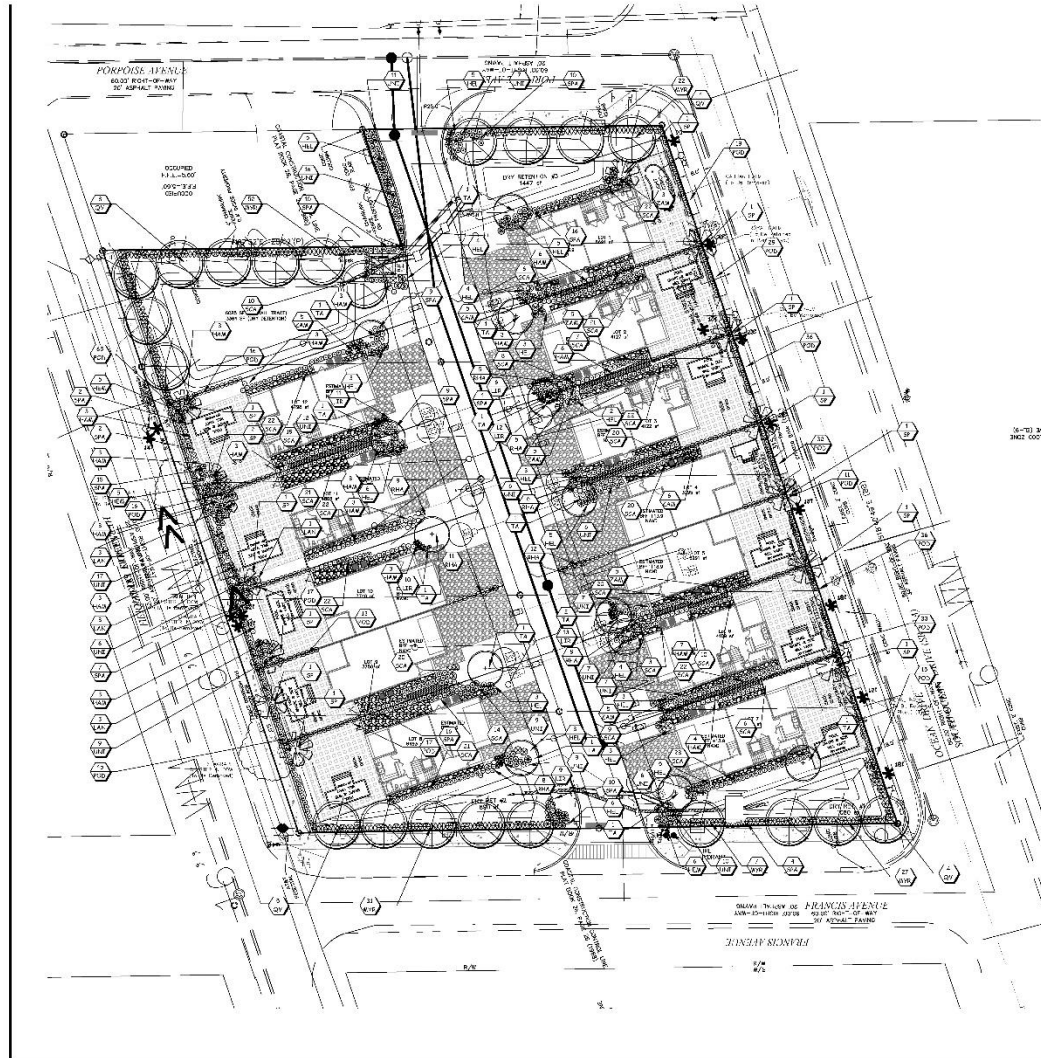


North Elevation



East (Oceanside) Elevation

CORAL SANDS @ HUTCHINSON ISLAND



Landscape Legend:

Qty	Symb	WJ	Name	(N) Native	(F) Flowering Tree	(E) Evergreen
Trees:						
13	TA	🌳	Yellow Tabebuia (F)(E)			
21	QV	🌳	Tabebuia argentea, FG, 12' Ht, 5' Spr., 2.5" DBH			
14	SP	🌳	Live Oak (N)(E)			
			Quercus virginiana, FG, 12' Ht, 5' Spr., 2.5" DBH			
			Cabbage Palm (N)(E)			
			Sabal palmetto, 18' to 24' OA ht			
Shrubs:						
75	HAM	🌳	Dwarf Firebush (N)			
139	MYR	🌳	Hamelia patens 'Compacta', 3 gal, 24" ht, 36" o.c.			
383	POD	🌳	Wax Myrtle (N)			
71	RHA	🌳	Myrica carifera, 3 gal, 24"x18", 36" o.c.			
396	SCA	🌳	Podocarpus			
125	SPA	🌳	Podocarpus macrophyllus, 3 gal, 24"x18", 24" o.c.			
125	UNI	🌳	Indian Hawthorn			
39	ZAM	🌳	Rhaphiolepis indica, 3 gal, 24"x18", 24" o.c.			
			Inkberry (N)			
			Scaevola plumieri, 3 gal, 3 gal, 24"x18", 24" o.c.			
			Sand Cordgrass (N)			
			Spartina bakeri, 3 gal, 24" oc			
			Sea Oats (N)			
			Uniola paniculata, 3 gal, 24" ht, 24" o.c.			
			Coontie (N)			
			Zamia pumila, 3 gal, 36" oc			
Groundcover:						
101	HEL	🌳	Dune Sunflower (N)			
61	LIR	🌳	Helianthus debilis, 1 gal, 6"x12", 36" o.c.			
			Liriope			
			Liriope muscari 'Super Blue', 1 gal, 18" oc			

Landscape Data:

Trees required: 48 Trees
 12 lots, 4 trees per lot:
 Trees provided: 48 Trees

General Notes:

- No landscape materials other than sod grasses may be planted within a 5' radius maintenance area of any underground utility such as water meters, backflow devices, fire hydrants, sanitary sewer cleanouts, and manholes, air release valves, etc.
- No landscaping shall be planted in a manner that would adversely affect utility easements.
- All landscape areas to receive automatic irrigation. Water source to be potable or well and will be determined at time of building permit application.
- Sod around buildings to be St. Augustine 'Bitter Blue' sod. Sod to be seeded and disperse time and laid right. All areas within in retention areas to be seeded with Argentine Bahia grass.
- Not trees to be placed within 6' of any hard surface unless root barrier will be installed along the edge of the hard surface. Root barrier to extend at least 5' in either direction from the center of the tree trunk. Refer to Sheet LD-02 for installation details.



Landscape Design Associates
 2511 W. 15th Ave.
 Fort Lauderdale, FL 33311
 Phone: (954) 571-1111
 Fax: (954) 571-1112
 Email: info@landscape-design.com
 Website: www.landscape-design.com
 Project: Coral Sands at South Ocean
 City of Fort Pierce
 Date: 11/11/20
 Scale: 1" = 40'
 Sheet: LD-0

CORAL SANDS @ HUTCHINSON ISLAND



