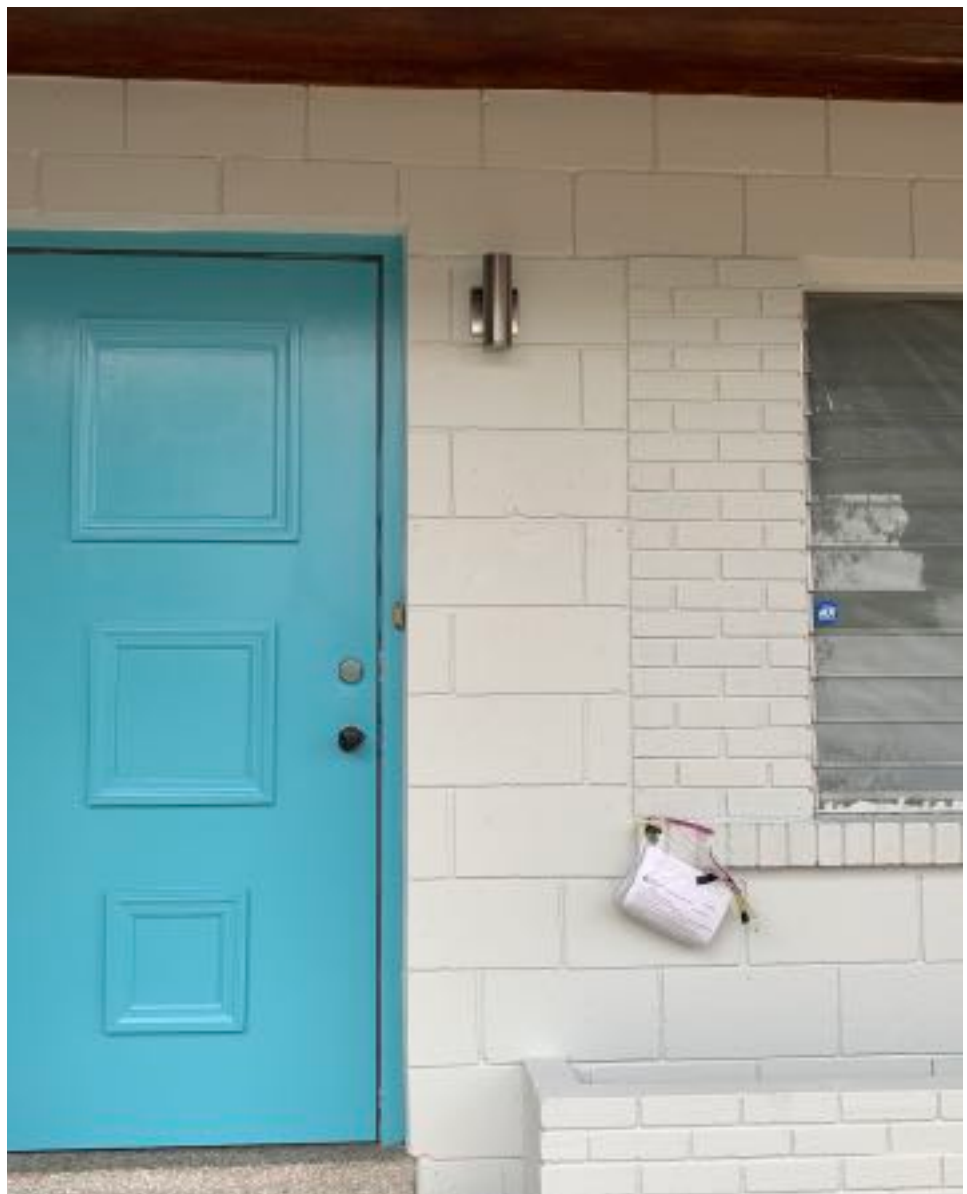


# 906 DELAWARE AVENUE

---

CERTIFICATE OF APPROPRIATENESS: APPLICATION SUPPLEMENT



January 24, 2022



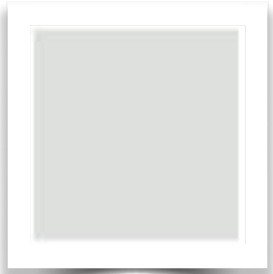
## 906 DELAWARE AVENUE: SEPTEMBER 2021

### ASSESSMENT OF HISTORIC SIGNIFICANCE

906 Delaware Avenue is a non-contributing structure in the Sample Oaks Historic District. Built in 1954, the architectural design is mid-century modern, and outside the period of significance for the District. The mid-century modern exterior design elements of the structure include struck block wall fabric, flat roof, horizontal window orientation, an integrated brick planter on the shallow front porch, and parking in the front of the building.

It is the intent of this rehabilitation to preserve these design elements and make careful alterations as needed to enhance the simple mid-century modern design.

January 24, 2022



Exterior Wall:  
Behr Tinsmith



Exterior Wall:  
Behr Tinsmith

## COLORS

The midcentury modern structure will be clad with a period-appropriate light neutral wall color (Behr Tinsmith) and a bright accent on the front door.

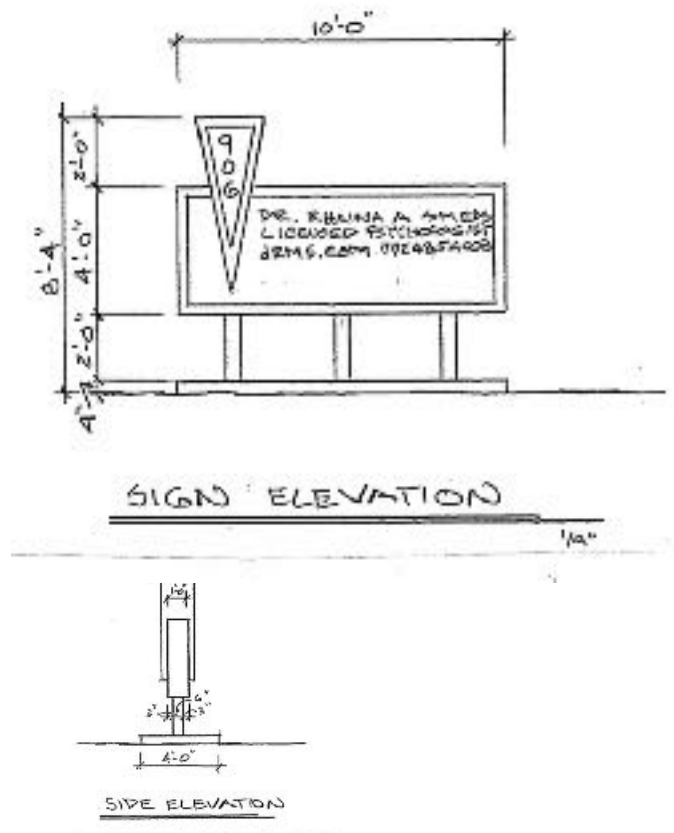
These colors will also be incorporated into the monument sign, in addition to stainless steel, and deep gray letters.

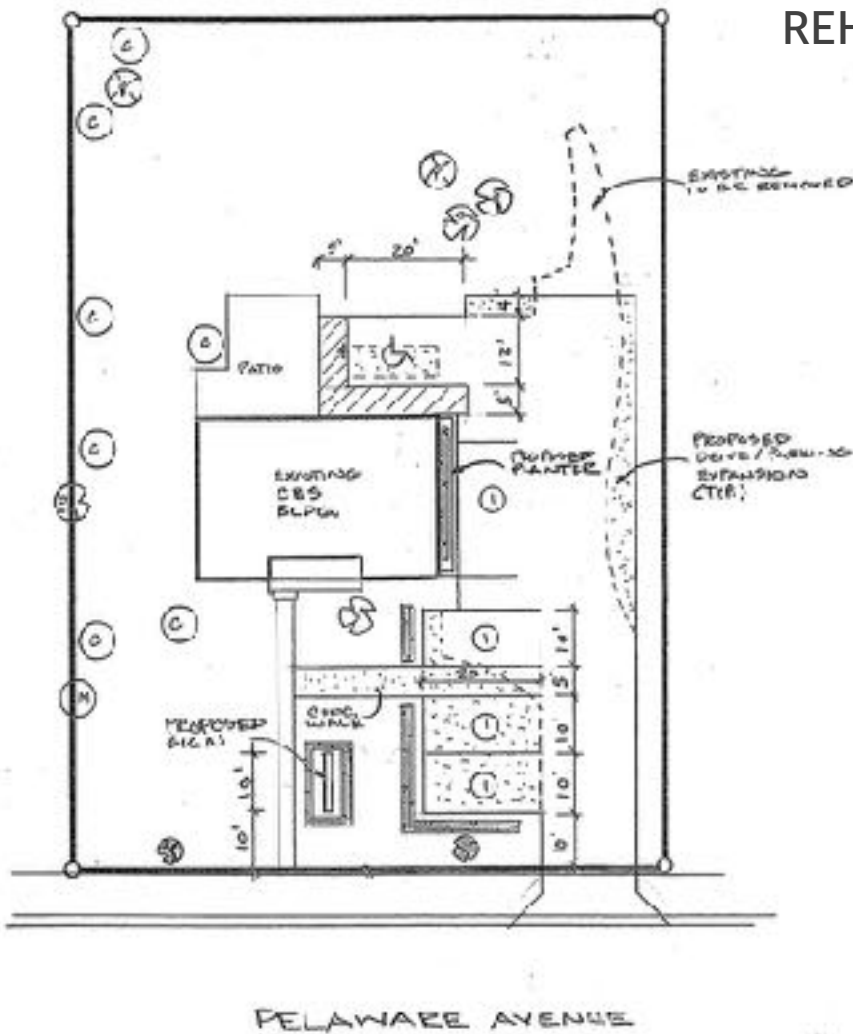
The brushed aluminum rail and cable system will blend with the silvery tinsmith color of the walls behind the porch rail.

## MONUMENT SIGN

This professional office will require a monument sign in keeping with the site's architectural design. A custom sign has been designed with a nod to midcentury geometric shapes, and will be constructed of concrete and stainless steel (or aluminum).

Lighting of the sign will be ground uplights, not backlit.





## REHABILITATION SCOPE

### Structure: Exterior Work

1. New exterior wall and door color
2. Replace Minimal Traditional porch railing with midcentury modern-appropriate stainless cable and rail system
3. Replace inoperable and insecure jalousie windows with clear pane white slider (impact resistant) windows of the same size, proportion and orientation.
4. Build struck block foundation planter on east side of structure with architectural feature reaching up and over roof to screen the new roof-mounted AC unit and ducts. (Currently looks like an alien is trying to eat the structure.)

### Site Improvements

1. Parking: Removal of uneven millings and replace with either asphalt or pavers (depending on grant funding availability) to meet code and ADA accessibility requirements. Install landscaping per code around parking area. Parking improvements to be installed in same area as originally used. The midcentury modern period idealized the auto, and began placing parking in front of the building. This design reflects that history. Stormwater retention will be integrated into the parking design.
2. Monument Sign: A custom built concrete and steel monument sign will be constructed in a midcentury modern design.
3. Western Boundary fence and hedge: Screen the residential use to the west with a 6' tall wooden shadowbox privacy fence and hedge. At the front facade, the fence will drop to 4' in height in a modern horizontal pine design.

## SITE PLAN

PROPOSED SITE IMPROVEMENTS  
1"=20'



## EAST PLANTER AND ROOFTOP SCREENING RENDERING

### PLANTER AND ROOF SCREENING

An additional design element that will be added to the structure is a struck block planter that runs along the eastern wall to bring relief between the structure and the paved vehicular use area. Extending up out of the planter, mid-building, is a midcentury trellis that extends up the wall to the flat roof overhang.

The screening of the air conditioning unit and ductwork will come from that trellis appearing to extend through the roof and across the roof in a linear east-to-west line, obscuring the prominent ducts and mechanical unit.

January 24, 2022