



INCUBATE NEIGHBORHOOD CENTER



The INC



Incubate Neighborhood Center

Also known as the INC

We believe everyone should have equal and equitable access to resources and opportunities

Purpose is to revitalize poor communities of color



Multi-generational Programs

- Entrepreneurship:

CEO=Commerce Entrepreneurship Operations

- Workforce Re-imagined:

WORKed

- Homeownership:

Dream Home





INNO

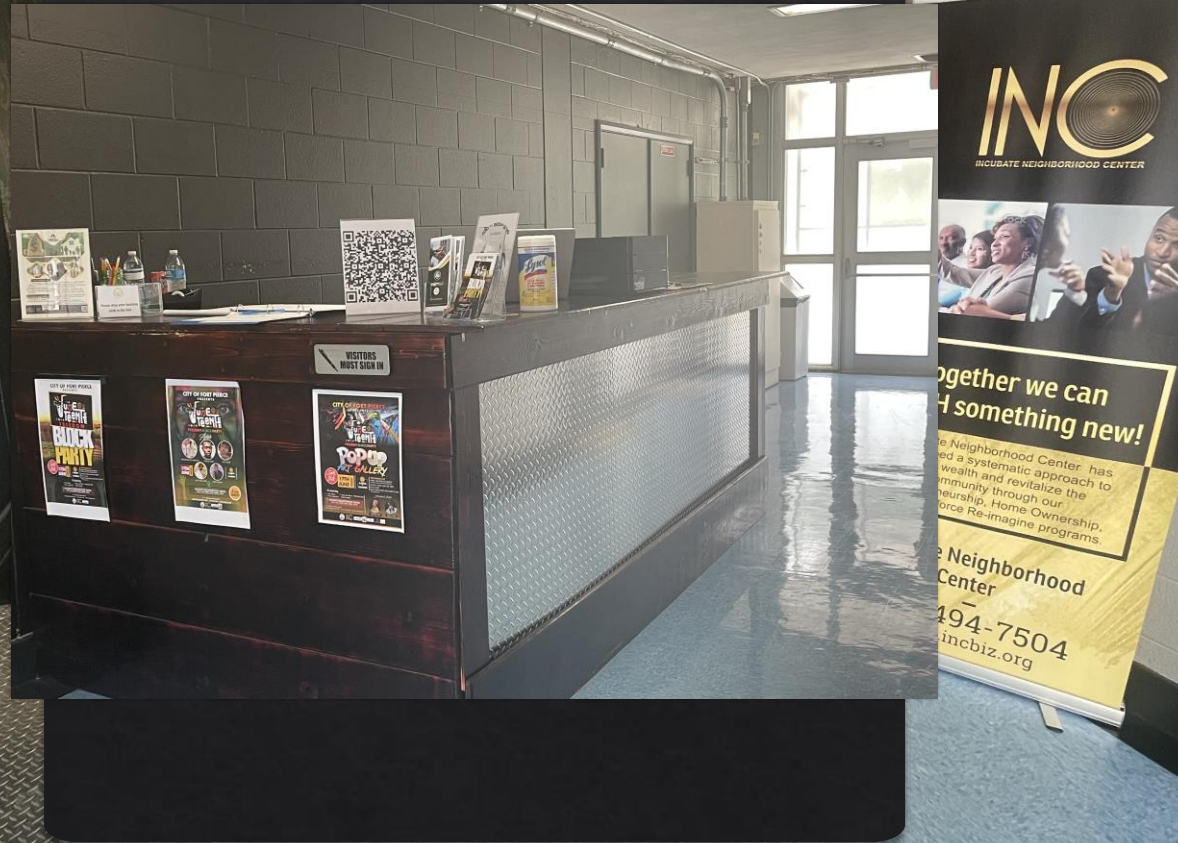


Exterior painting and pressure washed gives building a more modern feel.





MAIN Entrance



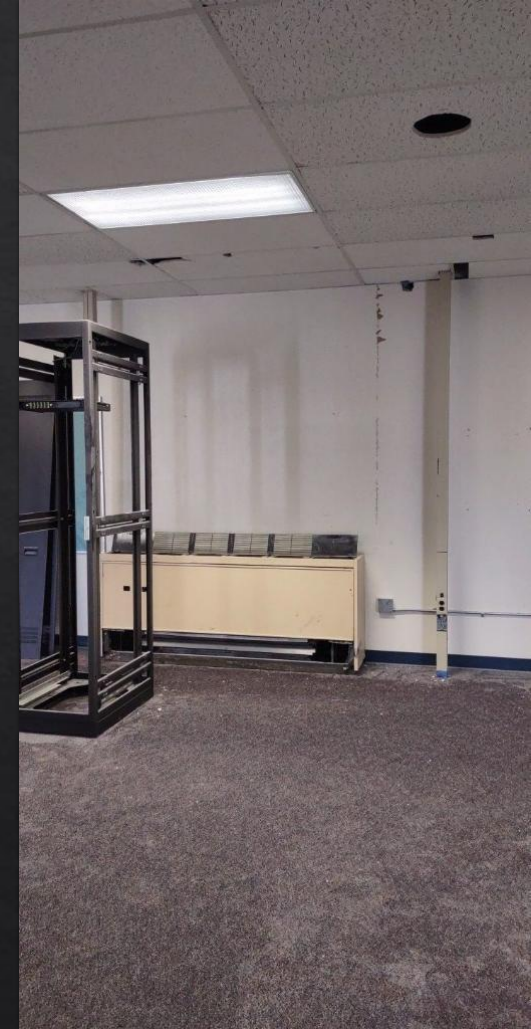
Phase 1 - Completed

- This phase is to take possession and prepare the facility for utilization as the community hub.
- Phase 1.0 is the retrofit of current space to provide a facility facelift which include, internal and external painting and create an atmosphere that's warm and inviting
- Phase 1.1 prepare the Think Tank Space (Flex space for CEO program)
 - ◆ 1. Replace flooring
 - ◆ 2. Replace air conditioner
 - ◆ 3. Upgrade restrooms
 - ◆ 4. Add Furniture
- Phase 1.2 includes, Business Technology, Conference Room, Copy Center, Internet Café, and Classroom, Shared workspaces and Bathroom refresh

Internet Cafe

Space designed for residents to enjoy while they are utilizing the internet

Before









LIFT ZONE

After



After



After



After



The Think Tank

- Temp workspace for CEO participants
- 3000 Square Ft
- Conversation spaces
- Green Screen-TV Production studio
- Removed Carpet
- Interior Painting
- Replaced Air Conditioners
- Added new furniture
- Removed carpets









Business Library and Study Space







Conference Room

- ◆ Can fit 8 people comfortably
- ◆ Has Library
- ◆ Removed Carpets
- ◆ Interior Painting
- ◆ Added video/presentation technology
- ◆ Removed carpet
- ◆ New furniture



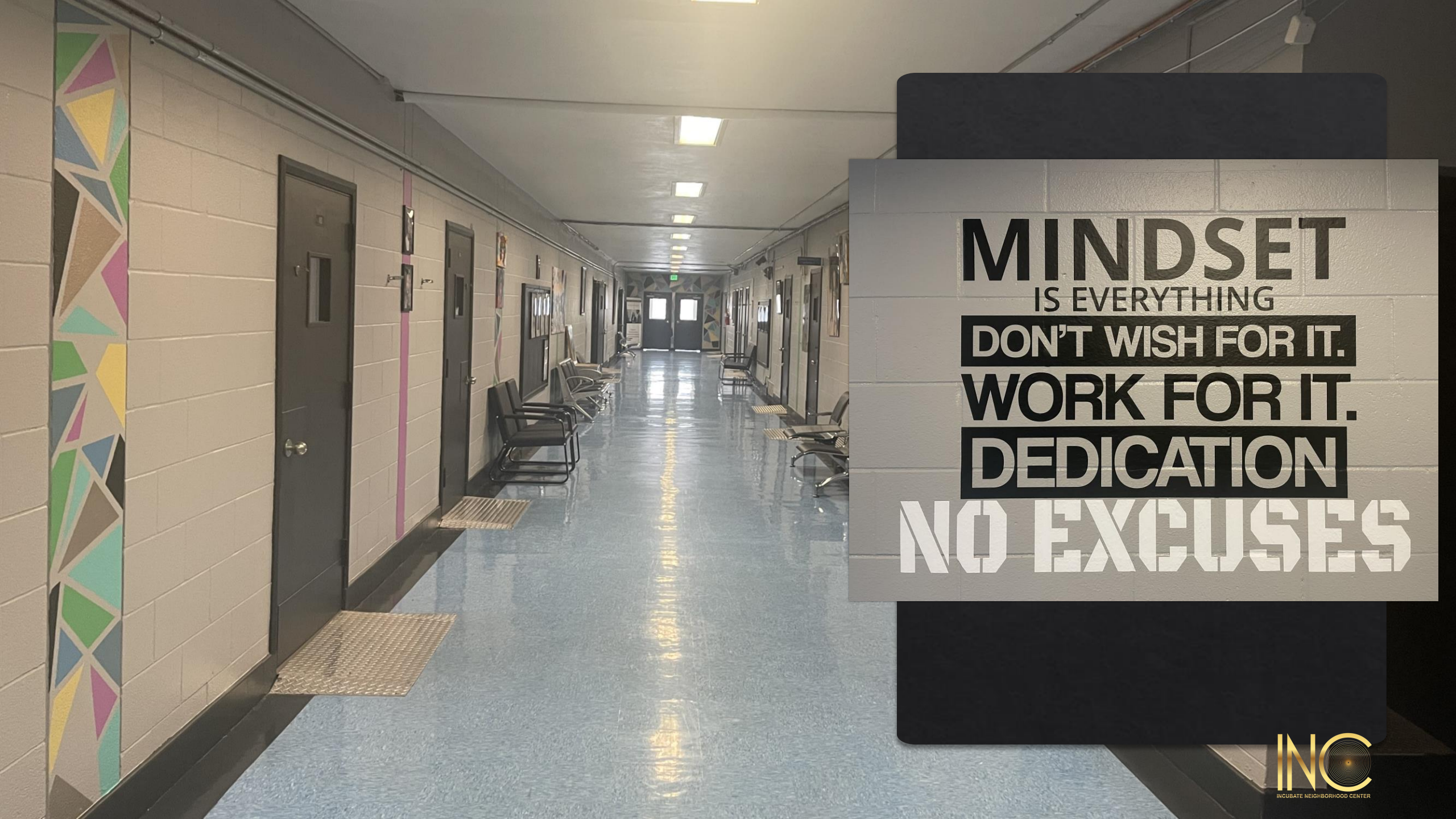
Interactive Art Gallery Transformation

- Location: Downstairs Main Hallway
- History of Means Court
- African American History
- Positive Affirmations
- Art from Local Artist
- Creates a cultural experience

Before







MINDSET
IS EVERYTHING

DON'T WISH FOR IT.

WORK FOR IT.

DEDICATION

NO EXCUSES









Seminar/Class-Room

- Repaint interior room
- New furniture
- Room capacity is 25
- New computer and Visual Technology
- Projector
- White Board
- Podium
- Facilitator Desk





Business Technology Center

- Repaint interior room
- New furniture
- 10 individual work section
- 10 computers
- Facilitator Desk
- Projector and Screen
- Sorting station
- Printer



Before



Bathroom Refresh

- Interior Painting
- Update Floors
- Update soap dispenser and Trash Cans
- Update All Signage



Shared Office Spaces



Shared Office Spaces



Phase 2-In Progress

- Prepare the facility for utilization of the Business Incubator.
- Prepare the Shared Workspace (Flex space for CEO program)
 - ◆ 1. Replace flooring
 - ◆ 2. Replace air conditioner
 - ◆ 3. Upgrade restrooms
 - ◆ 4. Add Furniture
 - ◆ 5. Add Elevator
 - ◆ 6. Interior Painting
 - ◆ 7. Add copy and print center
 - ◆ 8. Add Classroom
 - ◆ 9. Add Conference room
 - ◆ 10. Add break and mail room
 - ◆ 11. Add individual offices

Phase 3

The ***Shoppes at the Village*** is designed to reset the economic base of Lincoln Park

- ✓ Anchor Shoppes to drive foot traffic: Liquidation Center and Farmers Market
- ✓ 20 dedicated modular incubator retail shoppes for retail businesses of the CEO program
- ✓ Help startup retail businesses grow clientele and minimize operating expense to prepare them for a Brick and Mortar location.
- ✓ Located on the south side of the 2.57 acres
- ✓ A create a pipeline of retail space for the Commerce Entrepreneurship and Operations (CEO) retail program participants
- ✓ Real-world training experiences for participants of the workforce re-imagined program.
- ✓ Shaded seating areas
- ✓ Central Theme around African American History to drive increased tourism
- ✓ Trolley Heritage Tours (Friday and Saturday Only)

Phase 4

This phase is all about growth, green initiatives and beautification

- Butterfly and Botanical Garden
- Community Garden
- Hydroponic Farm
- Produce production container