



RECEIVED

Bldg. Permit # _____

COA# 22-47

CITY OF FORT PIERCE
PLANNING & ZONING

RECEIVED

Certificate of Appropriateness Application

AUG 25 2022

Building & Site Information

Address of the Site: 419 N 2nd St, Fort Pierce, FL 34950

Parcel ID #: 2403-705-0118-000-7

Type of Designation: Contributing Non-contributing Site within the Edgartown Historic District

Individually Designated Site, City Commission Resolution No. _____

CITY OF FORT PIERCE
PLANNING & ZONING

Property Owner / Applicant Information

Property Owner(s) Name(s): Holly Theuns

Mailing Address: 419 N 2nd St, Fort Pierce, FL 34950

Phone Number(s): 772-801-9509 Email: Hollytheuns@gmail.com

Applicant Name(s): Same as owner

Mailing Address: _____

Phone Number(s): _____ Email: _____

Representative Name(s): N/A

Mailing Address: _____

Phone Number(s): _____ Email: _____

Property Owner(s) Acknowledgements:- This application will not be considered complete without the signature of all property owners of record, which shall serve as an acknowledgement of the submission of this application. The property owner's signature below shall also authorize the Applicant (if other than the property owner) and/or Representative to act in his/her behalf for the purposes of seeking approval for the application described herein. The undersigned consents to inspection and photographing of the subject property by the Historic Preservation staff for purposes of consideration of this Application and/or presentation to the Historic Preservation Board.

I / We, Holly Theuns as Owner(s) of the subject property do hereby authorize the filing of this application on my/our behalf.

[Signature]
Signature of Owner

8/25/22
Date

Description of Requested Work

Please indicate the type of work requested:

- Fence
- Shed
- Door(s)
- Roof
- Window(s)
- Signage
- Shutter(s)
- Porch

- Rehabilitation
- New Construction
- Demolition
- Relocation

- Site Improvements (describe) _____
- Other (describe) add 4 ft white picket fence with 4 ft gate, and trellis over gate, along front property line

Please provide a detailed description of the proposed work to be performed: _____

~~4 ft white vinyl picket fence with 4 ft gate and trellis over gate will be added along the~~

4 ft white vinyl picket fence with 4 ft gate and trellis over gate will be added along the

~~property line. A trellis will be added over the gate and will be supported by a post and rail structure.~~

Have other alterations been made to the site within the last 12 months? No Yes, 5 fence sections in rear

Will the proposed work require a Zoning Variance? No Yes, Code Section(s): _____

Application Requirements

- \$10.00 Application fee
- Site Plan with dimensions.
- Architectural Drawings:
 - Drawings should show all current and proposed floor plans and elevations, fences, walls, and any other landscape features.
 - Drawings should indicate materials to be used.
- Photos - One (1) color photograph of the main façade of the site and photographs of any areas affected by the proposed project.
- Material(s) specifications and/or sample(s)
- Color samples.
- Demolition - Plans for what will be taking the demolished structure's place should be submitted.

✓ A



- SYMBOLS**
- WPP 8 = WOODEN PATTERN FENCE
 - WV 8 = WATER VALVE
 - WV 12 = WATER VALVE
 - WV 18 = WATER VALVE
 - WV 24 = WATER VALVE
 - WV 30 = WATER VALVE
 - WV 36 = WATER VALVE
 - WV 42 = WATER VALVE
 - WV 48 = WATER VALVE
 - WV 54 = WATER VALVE
 - WV 60 = WATER VALVE
 - WV 66 = WATER VALVE
 - WV 72 = WATER VALVE
 - WV 78 = WATER VALVE
 - WV 84 = WATER VALVE
 - WV 90 = WATER VALVE
 - WV 96 = WATER VALVE
 - WV 102 = WATER VALVE
 - WV 108 = WATER VALVE
 - WV 114 = WATER VALVE
 - WV 120 = WATER VALVE
 - WV 126 = WATER VALVE
 - WV 132 = WATER VALVE
 - WV 138 = WATER VALVE
 - WV 144 = WATER VALVE
 - WV 150 = WATER VALVE
 - WV 156 = WATER VALVE
 - WV 162 = WATER VALVE
 - WV 168 = WATER VALVE
 - WV 174 = WATER VALVE
 - WV 180 = WATER VALVE
 - WV 186 = WATER VALVE
 - WV 192 = WATER VALVE
 - WV 198 = WATER VALVE
 - WV 204 = WATER VALVE
 - WV 210 = WATER VALVE
 - WV 216 = WATER VALVE
 - WV 222 = WATER VALVE
 - WV 228 = WATER VALVE
 - WV 234 = WATER VALVE
 - WV 240 = WATER VALVE
 - WV 246 = WATER VALVE
 - WV 252 = WATER VALVE
 - WV 258 = WATER VALVE
 - WV 264 = WATER VALVE
 - WV 270 = WATER VALVE
 - WV 276 = WATER VALVE
 - WV 282 = WATER VALVE
 - WV 288 = WATER VALVE
 - WV 294 = WATER VALVE
 - WV 300 = WATER VALVE
 - WV 306 = WATER VALVE
 - WV 312 = WATER VALVE
 - WV 318 = WATER VALVE
 - WV 324 = WATER VALVE
 - WV 330 = WATER VALVE
 - WV 336 = WATER VALVE
 - WV 342 = WATER VALVE
 - WV 348 = WATER VALVE
 - WV 354 = WATER VALVE
 - WV 360 = WATER VALVE
 - WV 366 = WATER VALVE
 - WV 372 = WATER VALVE
 - WV 378 = WATER VALVE
 - WV 384 = WATER VALVE
 - WV 390 = WATER VALVE
 - WV 396 = WATER VALVE
 - WV 402 = WATER VALVE
 - WV 408 = WATER VALVE
 - WV 414 = WATER VALVE
 - WV 420 = WATER VALVE
 - WV 426 = WATER VALVE
 - WV 432 = WATER VALVE
 - WV 438 = WATER VALVE
 - WV 444 = WATER VALVE
 - WV 450 = WATER VALVE
 - WV 456 = WATER VALVE
 - WV 462 = WATER VALVE
 - WV 468 = WATER VALVE
 - WV 474 = WATER VALVE
 - WV 480 = WATER VALVE
 - WV 486 = WATER VALVE
 - WV 492 = WATER VALVE
 - WV 498 = WATER VALVE
 - WV 504 = WATER VALVE
 - WV 510 = WATER VALVE
 - WV 516 = WATER VALVE
 - WV 522 = WATER VALVE
 - WV 528 = WATER VALVE
 - WV 534 = WATER VALVE
 - WV 540 = WATER VALVE
 - WV 546 = WATER VALVE
 - WV 552 = WATER VALVE
 - WV 558 = WATER VALVE
 - WV 564 = WATER VALVE
 - WV 570 = WATER VALVE
 - WV 576 = WATER VALVE
 - WV 582 = WATER VALVE
 - WV 588 = WATER VALVE
 - WV 594 = WATER VALVE
 - WV 600 = WATER VALVE
 - WV 606 = WATER VALVE
 - WV 612 = WATER VALVE
 - WV 618 = WATER VALVE
 - WV 624 = WATER VALVE
 - WV 630 = WATER VALVE
 - WV 636 = WATER VALVE
 - WV 642 = WATER VALVE
 - WV 648 = WATER VALVE
 - WV 654 = WATER VALVE
 - WV 660 = WATER VALVE
 - WV 666 = WATER VALVE
 - WV 672 = WATER VALVE
 - WV 678 = WATER VALVE
 - WV 684 = WATER VALVE
 - WV 690 = WATER VALVE
 - WV 696 = WATER VALVE
 - WV 702 = WATER VALVE
 - WV 708 = WATER VALVE
 - WV 714 = WATER VALVE
 - WV 720 = WATER VALVE
 - WV 726 = WATER VALVE
 - WV 732 = WATER VALVE
 - WV 738 = WATER VALVE
 - WV 744 = WATER VALVE
 - WV 750 = WATER VALVE
 - WV 756 = WATER VALVE
 - WV 762 = WATER VALVE
 - WV 768 = WATER VALVE
 - WV 774 = WATER VALVE
 - WV 780 = WATER VALVE
 - WV 786 = WATER VALVE
 - WV 792 = WATER VALVE
 - WV 798 = WATER VALVE
 - WV 804 = WATER VALVE
 - WV 810 = WATER VALVE
 - WV 816 = WATER VALVE
 - WV 822 = WATER VALVE
 - WV 828 = WATER VALVE
 - WV 834 = WATER VALVE
 - WV 840 = WATER VALVE
 - WV 846 = WATER VALVE
 - WV 852 = WATER VALVE
 - WV 858 = WATER VALVE
 - WV 864 = WATER VALVE
 - WV 870 = WATER VALVE
 - WV 876 = WATER VALVE
 - WV 882 = WATER VALVE
 - WV 888 = WATER VALVE
 - WV 894 = WATER VALVE
 - WV 900 = WATER VALVE
 - WV 906 = WATER VALVE
 - WV 912 = WATER VALVE
 - WV 918 = WATER VALVE
 - WV 924 = WATER VALVE
 - WV 930 = WATER VALVE
 - WV 936 = WATER VALVE
 - WV 942 = WATER VALVE
 - WV 948 = WATER VALVE
 - WV 954 = WATER VALVE
 - WV 960 = WATER VALVE
 - WV 966 = WATER VALVE
 - WV 972 = WATER VALVE
 - WV 978 = WATER VALVE
 - WV 984 = WATER VALVE
 - WV 990 = WATER VALVE
 - WV 996 = WATER VALVE
 - WV 1002 = WATER VALVE
 - WV 1008 = WATER VALVE
 - WV 1014 = WATER VALVE
 - WV 1020 = WATER VALVE
 - WV 1026 = WATER VALVE
 - WV 1032 = WATER VALVE
 - WV 1038 = WATER VALVE
 - WV 1044 = WATER VALVE
 - WV 1050 = WATER VALVE
 - WV 1056 = WATER VALVE
 - WV 1062 = WATER VALVE
 - WV 1068 = WATER VALVE
 - WV 1074 = WATER VALVE
 - WV 1080 = WATER VALVE
 - WV 1086 = WATER VALVE
 - WV 1092 = WATER VALVE
 - WV 1098 = WATER VALVE
 - WV 1104 = WATER VALVE
 - WV 1110 = WATER VALVE
 - WV 1116 = WATER VALVE
 - WV 1122 = WATER VALVE
 - WV 1128 = WATER VALVE
 - WV 1134 = WATER VALVE
 - WV 1140 = WATER VALVE
 - WV 1146 = WATER VALVE
 - WV 1152 = WATER VALVE
 - WV 1158 = WATER VALVE
 - WV 1164 = WATER VALVE
 - WV 1170 = WATER VALVE
 - WV 1176 = WATER VALVE
 - WV 1182 = WATER VALVE
 - WV 1188 = WATER VALVE
 - WV 1194 = WATER VALVE
 - WV 1200 = WATER VALVE
 - WV 1206 = WATER VALVE
 - WV 1212 = WATER VALVE
 - WV 1218 = WATER VALVE
 - WV 1224 = WATER VALVE
 - WV 1230 = WATER VALVE
 - WV 1236 = WATER VALVE
 - WV 1242 = WATER VALVE
 - WV 1248 = WATER VALVE
 - WV 1254 = WATER VALVE
 - WV 1260 = WATER VALVE
 - WV 1266 = WATER VALVE
 - WV 1272 = WATER VALVE
 - WV 1278 = WATER VALVE
 - WV 1284 = WATER VALVE
 - WV 1290 = WATER VALVE
 - WV 1296 = WATER VALVE
 - WV 1302 = WATER VALVE
 - WV 1308 = WATER VALVE
 - WV 1314 = WATER VALVE
 - WV 1320 = WATER VALVE
 - WV 1326 = WATER VALVE
 - WV 1332 = WATER VALVE
 - WV 1338 = WATER VALVE
 - WV 1344 = WATER VALVE
 - WV 1350 = WATER VALVE
 - WV 1356 = WATER VALVE
 - WV 1362 = WATER VALVE
 - WV 1368 = WATER VALVE
 - WV 1374 = WATER VALVE
 - WV 1380 = WATER VALVE
 - WV 1386 = WATER VALVE
 - WV 1392 = WATER VALVE
 - WV 1398 = WATER VALVE
 - WV 1404 = WATER VALVE
 - WV 1410 = WATER VALVE
 - WV 1416 = WATER VALVE
 - WV 1422 = WATER VALVE
 - WV 1428 = WATER VALVE
 - WV 1434 = WATER VALVE
 - WV 1440 = WATER VALVE
 - WV 1446 = WATER VALVE
 - WV 1452 = WATER VALVE
 - WV 1458 = WATER VALVE
 - WV 1464 = WATER VALVE
 - WV 1470 = WATER VALVE
 - WV 1476 = WATER VALVE
 - WV 1482 = WATER VALVE
 - WV 1488 = WATER VALVE
 - WV 1494 = WATER VALVE
 - WV 1500 = WATER VALVE
 - WV 1506 = WATER VALVE
 - WV 1512 = WATER VALVE
 - WV 1518 = WATER VALVE
 - WV 1524 = WATER VALVE
 - WV 1530 = WATER VALVE
 - WV 1536 = WATER VALVE
 - WV 1542 = WATER VALVE
 - WV 1548 = WATER VALVE
 - WV 1554 = WATER VALVE
 - WV 1560 = WATER VALVE
 - WV 1566 = WATER VALVE
 - WV 1572 = WATER VALVE
 - WV 1578 = WATER VALVE
 - WV 1584 = WATER VALVE
 - WV 1590 = WATER VALVE
 - WV 1596 = WATER VALVE
 - WV 1602 = WATER VALVE
 - WV 1608 = WATER VALVE
 - WV 1614 = WATER VALVE
 - WV 1620 = WATER VALVE
 - WV 1626 = WATER VALVE
 - WV 1632 = WATER VALVE
 - WV 1638 = WATER VALVE
 - WV 1644 = WATER VALVE
 - WV 1650 = WATER VALVE
 - WV 1656 = WATER VALVE
 - WV 1662 = WATER VALVE
 - WV 1668 = WATER VALVE
 - WV 1674 = WATER VALVE
 - WV 1680 = WATER VALVE
 - WV 1686 = WATER VALVE
 - WV 1692 = WATER VALVE
 - WV 1698 = WATER VALVE
 - WV 1704 = WATER VALVE
 - WV 1710 = WATER VALVE
 - WV 1716 = WATER VALVE
 - WV 1722 = WATER VALVE
 - WV 1728 = WATER VALVE
 - WV 1734 = WATER VALVE
 - WV 1740 = WATER VALVE
 - WV 1746 = WATER VALVE
 - WV 1752 = WATER VALVE
 - WV 1758 = WATER VALVE
 - WV 1764 = WATER VALVE
 - WV 1770 = WATER VALVE
 - WV 1776 = WATER VALVE
 - WV 1782 = WATER VALVE
 - WV 1788 = WATER VALVE
 - WV 1794 = WATER VALVE
 - WV 1800 = WATER VALVE
 - WV 1806 = WATER VALVE
 - WV 1812 = WATER VALVE
 - WV 1818 = WATER VALVE
 - WV 1824 = WATER VALVE
 - WV 1830 = WATER VALVE
 - WV 1836 = WATER VALVE
 - WV 1842 = WATER VALVE
 - WV 1848 = WATER VALVE
 - WV 1854 = WATER VALVE
 - WV 1860 = WATER VALVE
 - WV 1866 = WATER VALVE
 - WV 1872 = WATER VALVE
 - WV 1878 = WATER VALVE
 - WV 1884 = WATER VALVE
 - WV 1890 = WATER VALVE
 - WV 1896 = WATER VALVE
 - WV 1902 = WATER VALVE
 - WV 1908 = WATER VALVE
 - WV 1914 = WATER VALVE
 - WV 1920 = WATER VALVE
 - WV 1926 = WATER VALVE
 - WV 1932 = WATER VALVE
 - WV 1938 = WATER VALVE
 - WV 1944 = WATER VALVE
 - WV 1950 = WATER VALVE
 - WV 1956 = WATER VALVE
 - WV 1962 = WATER VALVE
 - WV 1968 = WATER VALVE
 - WV 1974 = WATER VALVE
 - WV 1980 = WATER VALVE
 - WV 1986 = WATER VALVE
 - WV 1992 = WATER VALVE
 - WV 1998 = WATER VALVE
 - WV 2004 = WATER VALVE
 - WV 2010 = WATER VALVE
 - WV 2016 = WATER VALVE
 - WV 2022 = WATER VALVE
 - WV 2028 = WATER VALVE
 - WV 2034 = WATER VALVE
 - WV 2040 = WATER VALVE
 - WV 2046 = WATER VALVE
 - WV 2052 = WATER VALVE
 - WV 2058 = WATER VALVE
 - WV 2064 = WATER VALVE
 - WV 2070 = WATER VALVE
 - WV 2076 = WATER VALVE
 - WV 2082 = WATER VALVE
 - WV 2088 = WATER VALVE
 - WV 2094 = WATER VALVE
 - WV 2100 = WATER VALVE
 - WV 2106 = WATER VALVE
 - WV 2112 = WATER VALVE
 - WV 2118 = WATER VALVE
 - WV 2124 = WATER VALVE
 - WV 2130 = WATER VALVE
 - WV 2136 = WATER VALVE
 - WV 2142 = WATER VALVE
 - WV 2148 = WATER VALVE
 - WV 2154 = WATER VALVE
 - WV 2160 = WATER VALVE
 - WV 2166 = WATER VALVE
 - WV 2172 = WATER VALVE
 - WV 2178 = WATER VALVE
 - WV 2184 = WATER VALVE
 - WV 2190 = WATER VALVE
 - WV 2196 = WATER VALVE
 - WV 2202 = WATER VALVE
 - WV 2208 = WATER VALVE
 - WV 2214 = WATER VALVE
 - WV 2220 = WATER VALVE
 - WV 2226 = WATER VALVE
 - WV 2232 = WATER VALVE
 - WV 2238 = WATER VALVE
 - WV 2244 = WATER VALVE
 - WV 2250 = WATER VALVE
 - WV 2256 = WATER VALVE
 - WV 2262 = WATER VALVE
 - WV 2268 = WATER VALVE
 - WV 2274 = WATER VALVE
 - WV 2280 = WATER VALVE
 - WV 2286 = WATER VALVE
 - WV 2292 = WATER VALVE
 - WV 2298 = WATER VALVE
 - WV 2304 = WATER VALVE
 - WV 2310 = WATER VALVE
 - WV 2316 = WATER VALVE
 - WV 2322 = WATER VALVE
 - WV 2328 = WATER VALVE
 - WV 2334 = WATER VALVE
 - WV 2340 = WATER VALVE
 - WV 2346 = WATER VALVE
 - WV 2352 = WATER VALVE
 - WV 2358 = WATER VALVE
 - WV 2364 = WATER VALVE
 - WV 2370 = WATER VALVE
 - WV 2376 = WATER VALVE
 - WV 2382 = WATER VALVE
 - WV 2388 = WATER VALVE
 - WV 2394 = WATER VALVE
 - WV 2400 = WATER VALVE
 - WV 2406 = WATER VALVE
 - WV 2412 = WATER VALVE
 - WV 2418 = WATER VALVE
 - WV 2424 = WATER VALVE
 - WV 2430 = WATER VALVE
 - WV 2436 = WATER VALVE
 - WV 2442 = WATER VALVE
 - WV 2448 = WATER VALVE
 - WV 2454 = WATER VALVE
 - WV 2460 = WATER VALVE
 - WV 2466 = WATER VALVE
 - WV 2472 = WATER VALVE
 - WV 2478 = WATER VALVE
 - WV 2484 = WATER VALVE
 - WV 2490 = WATER VALVE
 - WV 2496 = WATER VALVE
 - WV 2502 = WATER VALVE
 - WV 2508 = WATER VALVE
 - WV 2514 = WATER VALVE
 - WV 2520 = WATER VALVE
 - WV 2526 = WATER VALVE
 - WV 2532 = WATER VALVE
 - WV 2538 = WATER VALVE
 - WV 2544 = WATER VALVE
 - WV 2550 = WATER VALVE
 - WV 2556 = WATER VALVE
 - WV 2562 = WATER VALVE
 - WV 2568 = WATER VALVE
 - WV 2574 = WATER VALVE
 - WV 2580 = WATER VALVE
 - WV 2586 = WATER VALVE
 - WV 2592 = WATER VALVE
 - WV 2598 = WATER VALVE
 - WV 2604 = WATER VALVE
 - WV 2610 = WATER VALVE
 - WV 2616 = WATER VALVE
 - WV 2622 = WATER VALVE
 - WV 2628 = WATER VALVE
 - WV 2634 = WATER VALVE
 - WV 2640 = WATER VALVE
 - WV 2646 = WATER VALVE
 - WV 2652 = WATER VALVE
 - WV 2658 = WATER VALVE
 - WV 2664 = WATER VALVE
 - WV 2670 = WATER VALVE
 - WV 2676 = WATER VALVE
 - WV 2682 = WATER VALVE
 - WV 2688 = WATER VALVE
 - WV 2694 = WATER VALVE
 - WV 2700 = WATER VALVE
 - WV 2706 = WATER VALVE
 - WV 2712 = WATER VALVE
 - WV 2718 = WATER VALVE
 - WV 2724 = WATER VALVE
 - WV 2730 = WATER VALVE
 - WV 2736 = WATER VALVE
 - WV 2742 = WATER VALVE
 - WV 2748 = WATER VALVE
 - WV 2754 = WATER VALVE
 - WV 2760 = WATER VALVE
 - WV 2766 = WATER VALVE
 - WV 2772 = WATER VALVE
 - WV 2778 = WATER VALVE
 - WV 2784 = WATER VALVE
 - WV 2790 = WATER VALVE
 - WV 2796 = WATER VALVE
 - WV 2802 = WATER VALVE
 - WV 2808 = WATER VALVE
 - WV 2814 = WATER VALVE
 - WV 2820 = WATER VALVE
 - WV 2826 = WATER VALVE
 - WV 2832 = WATER VALVE
 - WV 2838 = WATER VALVE
 - WV 2844 = WATER VALVE
 - WV 2850 = WATER VALVE
 - WV 2856 = WATER VALVE
 - WV 2862 = WATER VALVE
 - WV 2868 = WATER VALVE
 - WV 2874 = WATER VALVE
 - WV 2880 = WATER VALVE
 - WV 2886 = WATER VALVE
 - WV 2892 = WATER VALVE
 - WV 2898 = WATER VALVE
 - WV 2904 = WATER VALVE
 - WV 2910 = WATER VALVE
 - WV 2916 = WATER VALVE
 - WV 2922 = WATER VALVE
 - WV 2928 = WATER VALVE
 - WV 2934 = WATER VALVE
 - WV 2940 = WATER VALVE
 - WV 2946 = WATER VALVE
 - WV 2952 = WATER VALVE
 - WV 2958 = WATER VALVE
 - WV 2964 = WATER VALVE
 - WV 2970 = WATER VALVE
 - WV 2976 = WATER VALVE
 - WV 2982 = WATER VALVE
 - WV 2988 = WATER VALVE
 - WV 2994 = WATER VALVE
 - WV 3000 = WATER VALVE

Legal Description

DESCRIPTION AS RECORDED WITH WARRANTY DEED
 BOOK 12, PAGE 100
 ST. LUCIE COUNTY, FLORIDA PUBLIC RECORDS

Lot 5, Block 13-H, Assessor's Map of North Port of Port Pierce, according to the map or plat thereof, as recorded in Plat Book 1, Page(s) 164, of the Public Records of St. Lucie County, Florida.

Notes :

- Lands shown hereon were not abstracted for rights-of-way, easements of record or ownership.
- Not valid without the signature and original raised seal of a Florida licensed Surveyor and Mapper.
- Survey site lies in Flood Zone "X" per Flood Insurance Rate Map no. 12111001794, dated February 16, 2012.
- Underground utilities and improvements were not located.
- All boundary measurements shown are consistent with plotted dimensions unless otherwise noted.
- Elevations shown hereon are in feet, referenced to NAVD'83, based on St. Lucie County Benchmark "H 231", having a height of 6.81 feet above NAVD'83.
- CONVERSION NAVD'83 TO NAD 83: 1.50 feet, based on conversion by Coppen version 6.0.1.

Plat Plan Note:

- ALL PROPOSED ITEMS SHOWN HEREON ARE PER CLIENT INSTRUCTION. NO CIVIL DESIGN WORK WAS PERFORMED BY THIS SURVEY.
- ALL PROPOSED ITEMS SHOWN HEREON ARE SUBJECT TO APPROVAL BY ALL APPLICABLE REGULATORY DEPARTMENTS OF ST. LUCIE COUNTY.

Certified To :
 - Holly Theuns

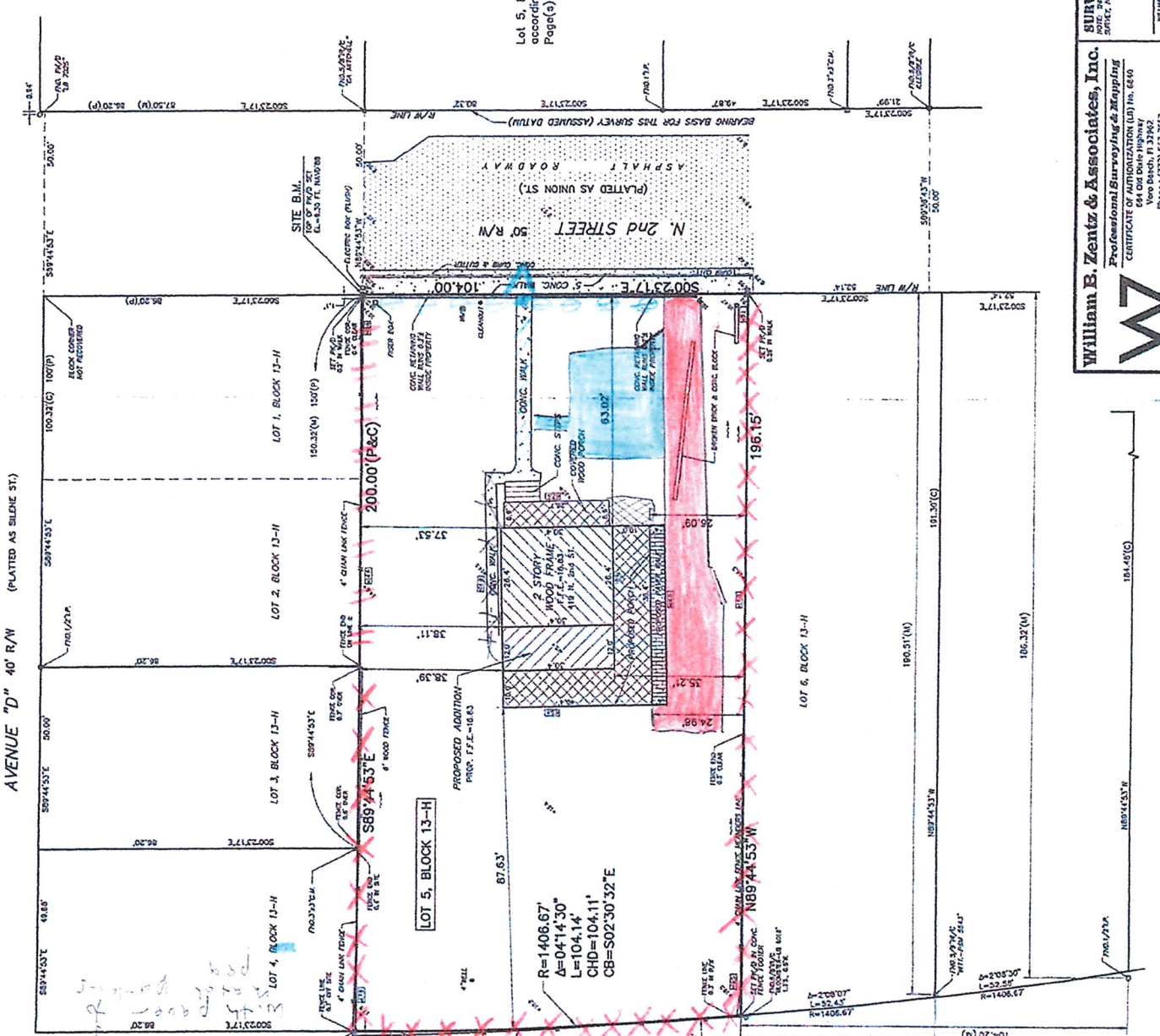
William B. Zentz & Associates, Inc.
 Professional Surveying & Mapping
 CERTIFICATE OF AUTHORIZATION (CA) No. 6240
 654 Old Dixie Highway
 Vero Beach, FL 32909
 Phone: (787) 232-5252
 Fax: (787) 232-1251

William B. Zentz, PLS
 Registered Professional Land Surveyor No. 2178
 State of Florida

Holly Theuns
 Registered Professional Land Surveyor No. 2178
 State of Florida

BOUNDARY & TOPOGRAPHIC SURVEY FOR HOLLY THEUNS
 DATE: 12/19/12
 JOB NO.: 1201-091

WZ



new left white picket fence
 new fence vinyl
 left x left white gate
 20 deep x 29 wide
 dress existing sidewalk
 existing left chain link fence
 existing left wooden fence
 existing brick driveway

Gallery

Videos



Feedback

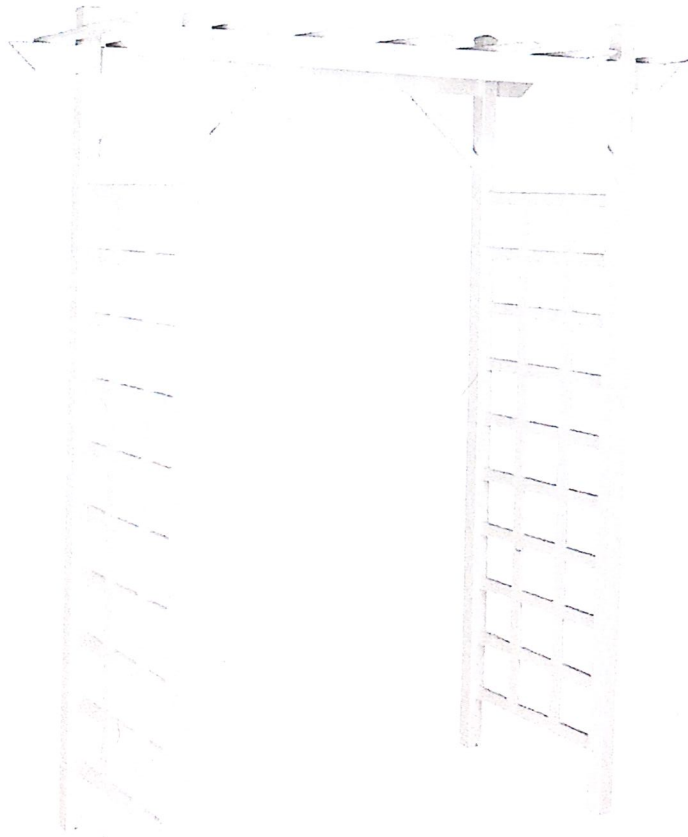
Smart Home
Security
Systems

Stream 4K
Video
in Every
Room

Amazon
Subscription

Amazon
Pharmacy

Amazon
Reviews



Pearington 1
Lattice Gard
Style: Square Latt



7/11/22, 9:20 AM

20220711_091115.jpg



front of house