

SURVEYOR'S NOTES

- BEARINGS AS SHOWN HEREON ARE BASED ON STATE PLANE COORDINATES, REFERENCE THE NORTH AMERICAN DATUM OF 1983/2011 ADJUSTED (N.A.D. 83/11), FLORIDA EAST ZONE, U.S. SURVEY FEET, REFERENCE A BEARING OF N88°55'59"W ALONG THE NORTH LINE OF THE NORTHEAST QUARTER SECTION OF SECTION 25.
- THIS SURVEY WAS DONE WITHOUT THE BENEFIT OF A TITLE COMMITMENT.
- THIS SURVEY IS BASED ON A CLOSED GEOMETRIC FIGURE EXCEEDING A HORIZONTAL CLOSURE OF 1:10,000.
- WELL-IDENTIFIED FEATURES IN THIS SURVEY AND MAP HAVE BEEN MEASURED TO AN ESTIMATED HORIZONTAL POSITIONAL ACCURACY OF 0.10 FEET.
- THERE WAS NO ATTEMPT TO LOCATE ANY SUBSURFACE FOUNDATIONS.
- NO UNDERGROUND UTILITIES WERE LOCATED OR SHOWN HEREON.
- THIS SURVEY IS NOT VALID WITHOUT THE SIGNATURE AND ORIGINAL RAISED SEAL OF A FLORIDA LICENSED SURVEYOR UNLESS DIGITALLY SIGNED.
- THIS SURVEY WAS DONE IN THE FIELD UTILIZING GLOBAL POSITIONING SYSTEM (G.P.S.) WITH REAL TIME KINEMATIC (R.T.K.). ALL DISTANCES GIVEN ARE GRID DISTANCES. THE SCALE FACTOR AT "Z 525" IS 0.99998756.
- ELEVATIONS AS SHOWN HEREON REFERENCE NORTH AMERICAN VERTICAL DATUM 1988 (N.A.V.D. 88), REFERENCE NATIONAL GEODETIC SURVEY ST LUCIE COUNTY BENCHMARK "Z 525", ELEVATION = 17.78 FEET. ELEVATIONS AS SHOWN HAVE BEEN MEASURED TO AN ESTIMATED VERTICAL POSITIONAL ACCURACY OF 0.1 FEET.
- THIS PROPERTY IS LOCATED IN FEDERAL FLOOD ZONE X, REFERENCE FEMA MAP COMMUNITY NO. 120286, PANEL 0167, SUFFIX J, EFFECTIVE DATE FEBRUARY 16, 2012. NO SEARCH FOR MAP MODIFICATIONS HAS BEEN DONE BY THIS SURVEYOR.
- ALL PALM TREES SHOWN HAVE A CLEAR TRUNK HEIGHT OF 10 FEET OR GREATER. SEE SHEET 6 & 7 FOR DETAILED INFORMATION.
- THIS SURVEY IS SUPPORTED BY A TITLE COMMITMENT ISSUED BY FIRST AMERICAN TITLE INSURANCE COMPANY, REFERENCE FILE NO. 1062-5405759 DATED MAY 19, 2021 @ 8:00 AM, REFERENCE THE FOLLOWING EXCEPTIONS IN SCHEDULE B:
 9. Ordinance No. 1-287 by City of Fort Pierce, Florida recorded in Book 1971, Page 1301, APPLIES TO SUBJECT PARCEL; INCORPORATES PARCEL INTO CITY OF FORT PIERCE.

CERTIFICATION

- TEG ACQUISITIONS LLC
- SEAGULL TITLE COMPANY
- FIRST AMERICAN TITLE INSURANCE COMPANY
- WILLIAM J. SEGAL PA

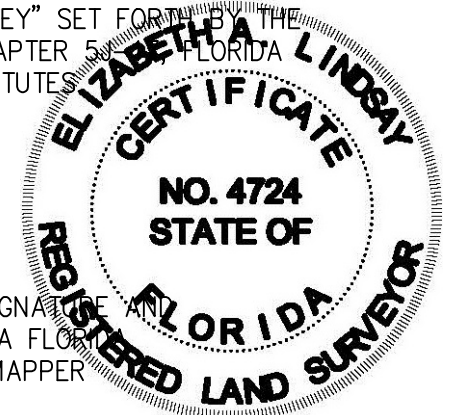
SURVEYOR'S CERTIFICATE

I HEREBY CERTIFY THAT THE "BOUNDARY SURVEY" AS SHOWN HEREON IS A TRUE AND CORRECT REPRESENTATION OF A FIELD SURVEY MADE UNDER MY DIRECTION AND CHARGE ON JULY 29, 2021 THROUGH AUGUST 11, 2021 AND SAID "BOUNDARY SURVEY" IS TRUE AND ACCURATE TO THE BEST OF MY KNOWLEDGE AND BELIEF. IT IS FURTHER CERTIFIED THAT THIS "BOUNDARY SURVEY" COMPLIES WITH THE STANDARDS OF PRACTICE FOR "BOUNDARY SURVEY" SET FORTH BY THE FLORIDA BOARD OF PROFESSIONAL SURVEYORS AND MAPPERS IN CHAPTER 5, FLORIDA ADMINISTRATIVE CODE, PURSUANT TO SECTION 472.027, FLORIDA STATUTES.

BETSY LINDSAY, INC.
 SURVEYING AND MAPPING

ELIZABETH A. LINDSAY, P.L.S.
 FLORIDA REGISTRATION NO. 4724

NOT VALID WITHOUT THE SIGNATURE AND ORIGINAL RAISED SEAL OF A LICENSED SURVEYOR AND MAPPER UNLESS DIGITALLY SIGNED



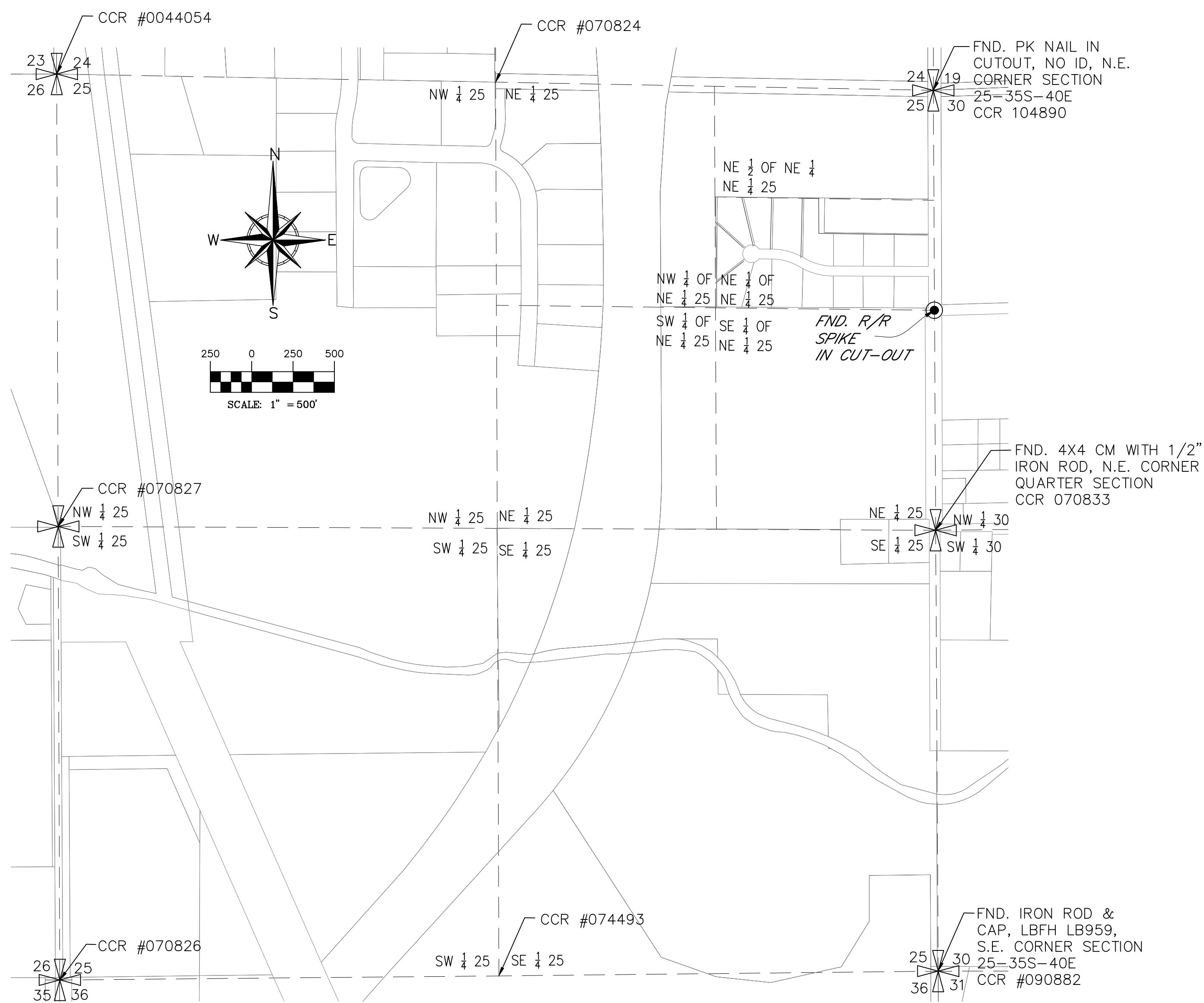
B Betsy Lindsay, Inc.
 SURVEYING AND MAPPING
 7987 S.W. JACK JAMES DRIVE STUART, FLORIDA 34987
 (772)286-5763 (772)286-5933 FAX
 LICENSED BUSINESS NO. 6852

DATE	REVISIONS
8/30/21	LEGAL DESCRIPTION

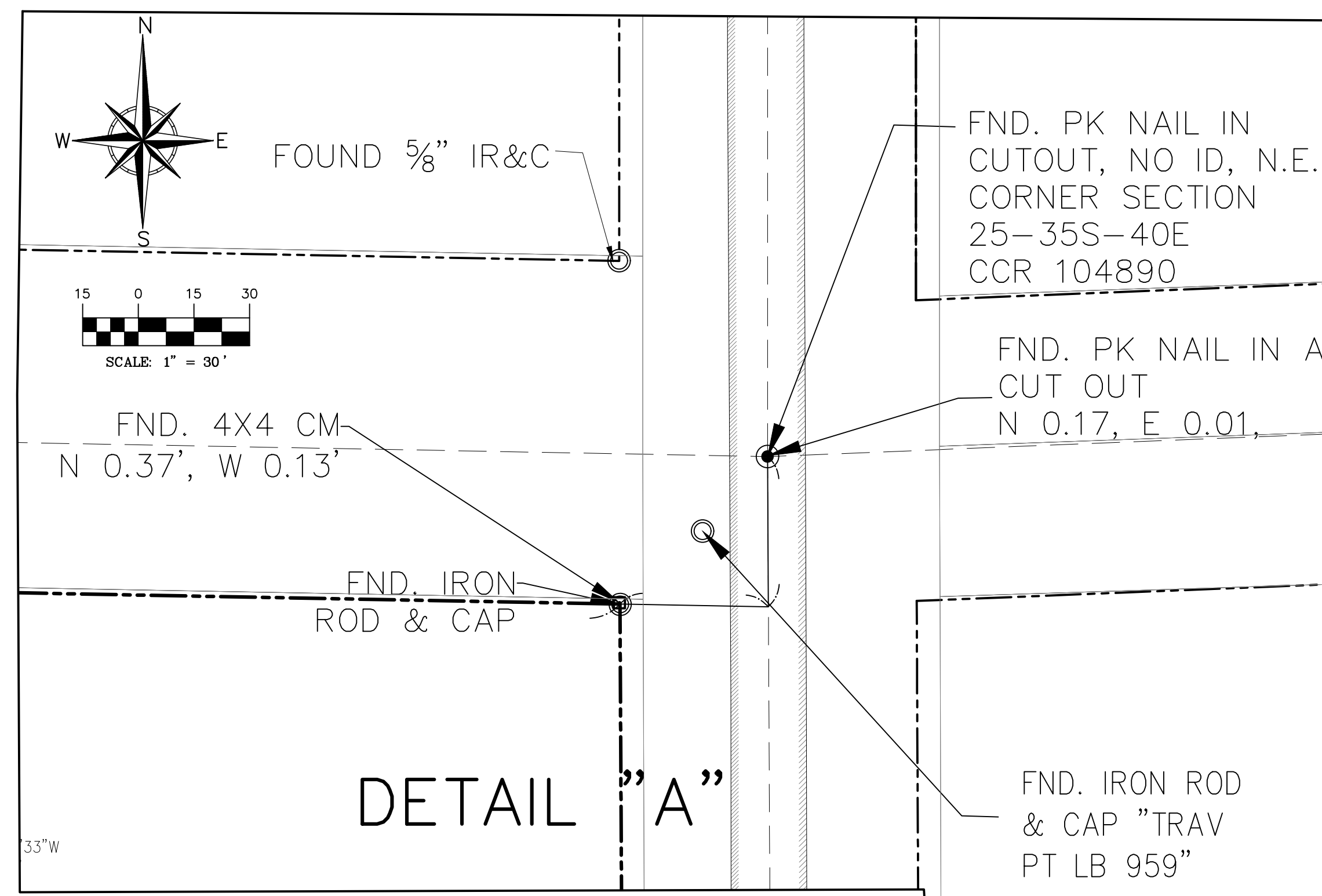
DATE 08/16/2021
 SCALE 1"=100'
 FIELD BK. S.L.C. 3/FP 20
 DRAWN BY J.L.S.
 CHECKED BY E.A.L.

A 27.89 ACRE PARCEL OF LAND IN THE NE 1/4 OF SEC 25,
 TWP 35 S, RNG 39 E, ST. LUCIE COUNTY, FLORIDA,
BOUNDARY SURVEY
 MARSHALL PROPERTY SERVICES, LLC.

SHEET NO. 1
 OF 7 SHEETS
 PROJECT NO. 21-92



SECTION DETAIL



ABBREVIATIONS

- BL BETSY LINDSAY, INC
- Δ CENTRAL (DELTA) ANGLE
- CBS CONCRETE BLOCK STRUCTURE
- CCR CERTIFIED CORNER RECORDS
- CM CONCRETE MONUMENT
- CMP CORRUGATED METAL PIPE
- CONC. CONCRETE
- EL. ELEVATION
- FND. FOUND
- HDPE HIGH DENSITY POLYETHYLENE
- INV. INVERT
- IRC IRON ROD & CAP
- L. LENGTH
- LB LICENSED BUSINESS
- M&W MAG NAIL & WASHER
- NO. NUMBER
- O.R.B. OFFICIAL RECORDS BOOK
- P.B. PLAT BOOK
- PG. PAGE
- PK PARKER KALON NAIL
- P.L.S. PROFESSIONAL LAND SURVEYOR
- P.S.M. PROFESSIONAL SURVEYOR & MAPPER
- PVC POLY VINYL CHLORIDE
- R. RADIUS
- RCP REINFORCED CONCRETE PIPE
- D. DEED
- M. MEASURED
- C. CALCULATED
- FT. FEET
- SEC. SECTION
- TWP. TOWNSHIP
- RNG. RANGE
- SQ. FT. SQUARE FEET
- TRAV. TRAVERSE
- R/R RAILROAD
- PK&W PARKER KALON NAIL & WASHER IDENTIFICATION

LINE TYPE LEGEND

---	TOP OF BANK
- - -	TOE OF SLOPE
---	CENTERLINE OF SWALE
---	STORM PIPE

- SYMBOL LEGEND
- x 15.25 FIELD LOCATED POINT WITH ELEVATION
 - PINE TREE
 - OAK TREE
 - PALM TREE
 - GUY ANCHOR AND WIRE
 - WOOD POWER POLE
 - ROYAL POINCIANA TREE

B BETSY LINDSAY, INC.
SURVEYING AND MAPPING

7987 S.W. JACK JAMES DRIVE STUART, FLORIDA 34987
(772)286-5763 (772)286-5933 FAX
LICENSED BUSINESS NO. 6852

DATE	REVISIONS

DATE 08/16/2021
SCALE AS SHOWN
FIELD BK. SLC3/16-17
DRAWN BY JLS
CHECKED BY E.A.L.

A 27.89 ACRE PARCEL OF LAND IN THE NE 1/4 OF SEC 25,
TWP 35 S, RNG 39 E, ST. LUCIE COUNTY, FLORIDA,

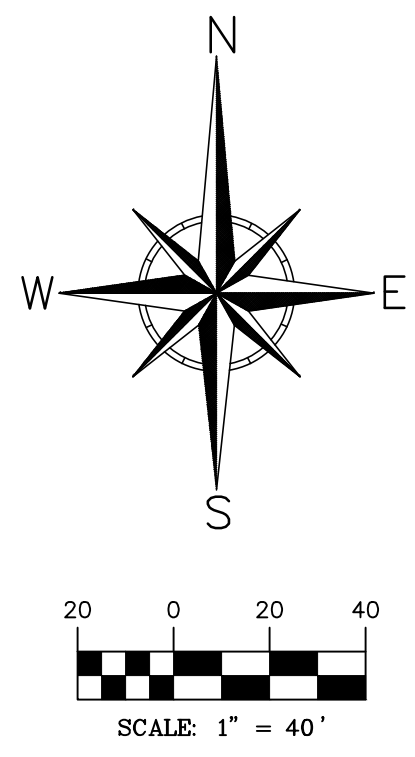
BOUNDARY SURVEY
MARSHALL PROPERTY SERVICES, LLC.

SHEET NO. 2
OF 7 SHEETS
PROJECT NO. 21-92

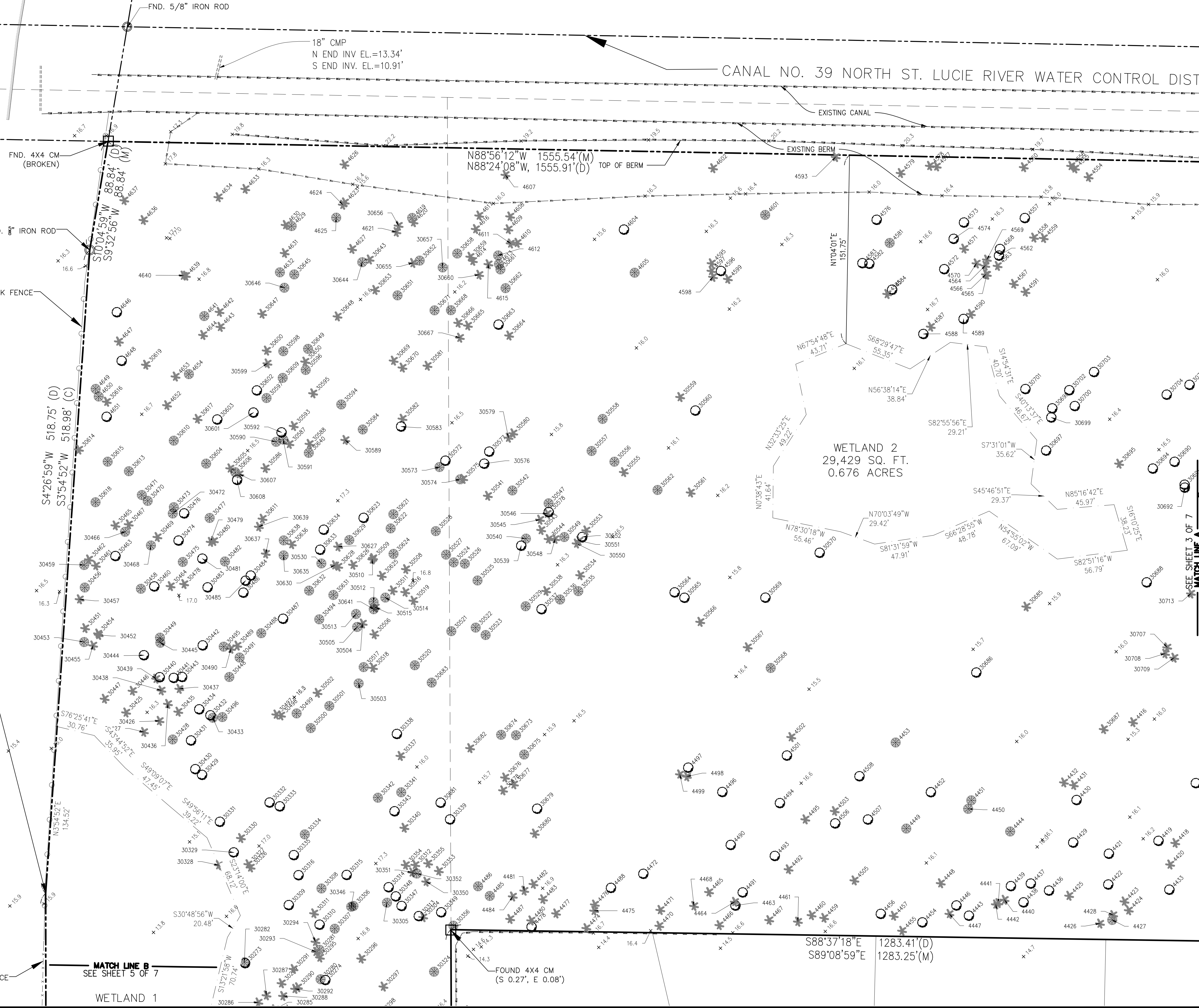
8/2021 PROJECT 21-92 Marshall Property Services, LLC. 11/20/2021 1:44:19 PM. DWG: 21-92-02.dwg. 11/20/2021 1:44:19 PM. C:\B-2021\

**INTERSTATE 95
(I-95)**
(PER FDOT RIGHT OF WAY
MAP SECTION 94001-2404,
DATED 1-25-90)

CORNER NOT FOUND OR
SET FALLING IN 3 FOOT
DEEP WATER REF.
CORNERS TO NORTH &
SOUTH FOR LOCATION.



4' HOG WIRE FENCE
MATCH LINE B
SEE SHEET 5 OF 7
WETLAND 1



B **BETSY LINDSAY, INC.**
SURVEYING AND MAPPING
7987 SW JACK JAMES DRIVE STUART, FLORIDA 34987
(772)286-5763 (772)286-5933 FAX
LICENSED BUSINESS NO. 6852

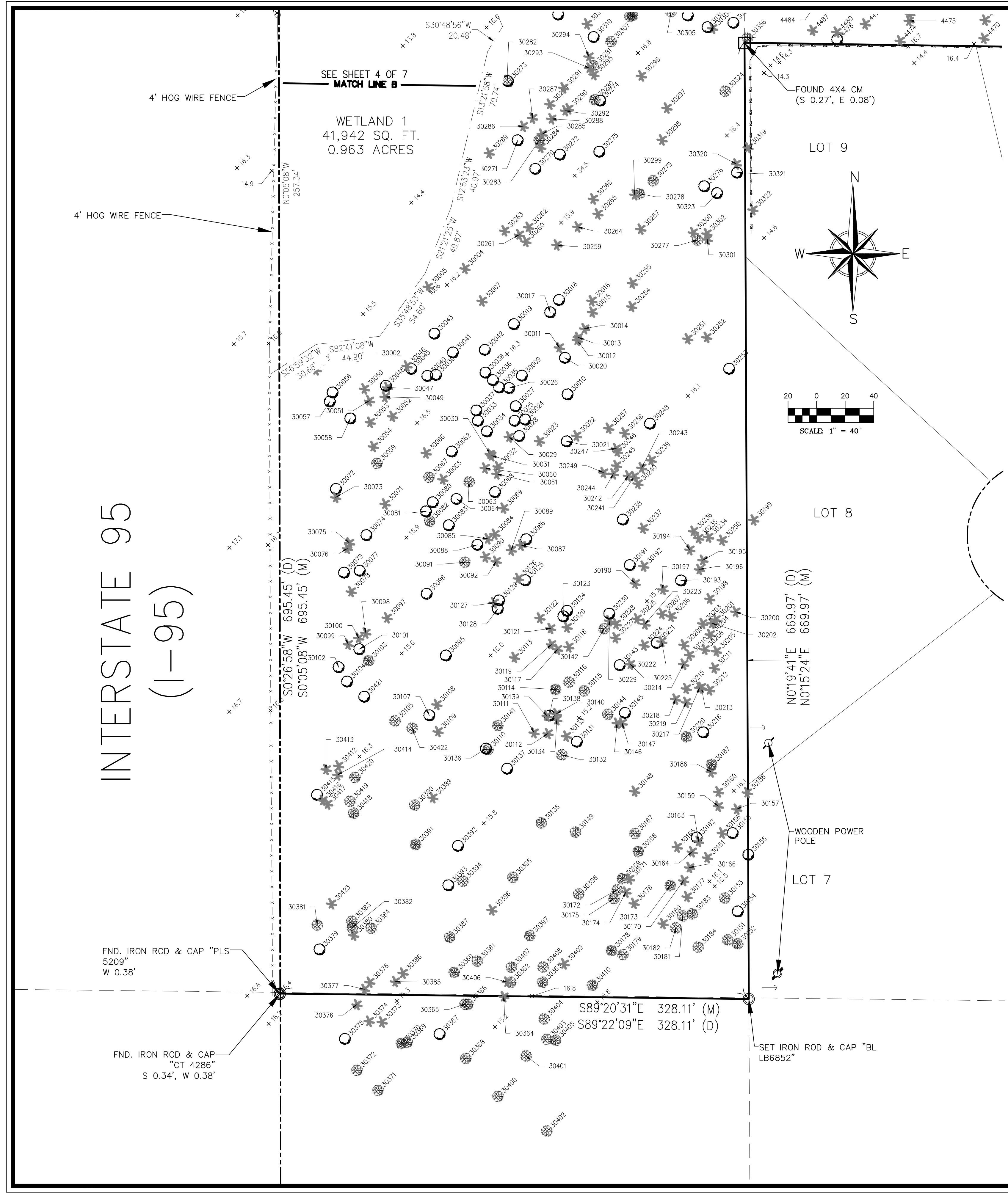
DATE	REVISIONS

DATE 08/16/2021
SCALE 1"=40'
FIELD BK. SLC3/16-17
DRAWN BY JLS
CHECKED BY EAL

A 27.89 ACRE PARCEL OF LAND IN THE NE 1/4 OF SEC 25,
TWP 35 S, RNG 39 E, ST. LUCIE COUNTY, FLORIDA,
BOUNDARY SURVEY
MARSHALL PROPERTY SERVICES, LLC.

SHEET NO. 4
OF 7 SHEETS
PROJECT NO. 21-92

© 2021 PROJECT 21-92 Marshall Property Services, LLC. All rights reserved. 11/23/2021 1:48:12 PM. D:\21-92\11-23-2021\11-23-2021.dwg, 11/23/2021 1:48:12 PM.



TREE NUMBER	SPECIES	DBH (INCHES)	TREE NUMBER	SPECIES	DBH (INCHES)	TREE NUMBER	SPECIES	DBH (INCHES)
30074	OAK	18	30434	OAK	12	4148	OAK	14
30077	OAK	16	30440	OAK	12	4150	OAK	8
30079	OAK	8	30441	OAK	15	4151	OAK	18
30080	OAK	8	30442	OAK	20	4152	OAK	18
30081	OAK	8	30443	OAK	12	4153	OAK	17
30083	OAK	8	30444	OAK	14	4154	OAK	7
30086	OAK	14	30460	OAK	12	4155	OAK	7
30088	OAK	14	30463	OAK	12	4156	OAK	9
30095	OAK	14	30474	OAK	12	4157	OAK	11
30096	OAK	12	30476	OAK	12	4158	OAK	9
30101	OAK	12	30481	OAK	12	4160	OAK	10
30102	OAK	8	30483	OAK	12	4161	OAK	7
30104	OAK	15	30484	OAK	12	4162	OAK	8
30107	OAK	10	30485	OAK	12	4164	OAK	12
30123	OAK	10	30486	OAK	12	4165	OAK	9
30124	OAK	10	30487	OAK	12	4168	OAK	5
30125	OAK	8	30537	OAK	14	4174	OAK	7
30128	OAK	10	30539	OAK	14	4176	OAK	5
30129	OAK	8	30552	OAK	12	4177	OAK	6
30131	OAK	8	30560	OAK	14	4185	OAK	13
30136	OAK	8	30564	OAK	12	4186	OAK	5
30137	OAK	6	30565	OAK	12	4193	OAK	10
30138	OAK	6	30569	OAK	12	4196	OAK	4
30143	OAK	6	30570	OAK	14	4197	OAK	9
30145	OAK	24	30572	OAK	15	4198	OAK	11
30154	OAK	8	30576	OAK	12	4199	OAK	11
30155	OAK	10	30577	OAK	14	4201	OAK	6
30156	OAK	12	30578	OAK	14	4203	OAK	48
30162	OAK	24	30583	OAK	12	4206	OAK	18
30191	OAK	12	30592	OAK	14	4207	OAK	16
30193	OAK	12	30601	OAK	14	4208	OAK	9
30216	OAK	14	30602	OAK	14	4210	OAK	36
30221	OAK	18	30603	OAK	15	4211	OAK	8
30230	OAK	8	30608	OAK	15	4212	OAK	9
30238	OAK	12	30623	OAK	12	4213	OAK	5
30248	OAK	25	30633	OAK	18	4214	OAK	6
30253	OAK	12	30634	OAK	18	4215	OAK	25
30270	OAK	12	30663	OAK	15	4218	OAK	9
30271	OAK	12	30679	OAK	15	4219	OAK	8
30272	OAK	12	30681	OAK	20	4220	OAK	8
30273	OAK	12	30686	OAK	17	4221	OAK	20
30274	OAK	12	30688	OAK	18	4222	OAK	18
30275	OAK	12	30690	OAK	12	4225	OAK	6
30276	OAK	14	30691	OAK	12	4226	OAK	24
30309	OAK	18	30692	OAK	12	4228	OAK	18
30310	OAK	12	30693	OAK	15	4229	OAK	10
30313	OAK	12	30694	OAK	14	4230	OAK	7
30314	OAK	12	30697	OAK	15	4231	OAK	7
30315	OAK	12	30698	OAK	12	4232	OAK	10
30316	OAK	12	30699	OAK	12	4233	OAK	14
30321	OAK	12	30700	OAK	12	4234	OAK	12
30323	OAK	12	30701	OAK	15	4245	OAK	18
30329	OAK	12	30702	OAK	12	4246	OAK	14
30331	OAK	14	30703	OAK	15	4251	OAK	8
30332	OAK	12	30704	OAK	15	4252	OAK	8
30333	OAK	15	30705	OAK	15	4253	OAK	9
30335	OAK	12	30711	OAK	12	4254	OAK	9
30338	OAK	12	30717	OAK	12	4256	OAK	12
30339	OAK	14	4131	OAK	7	4258	OAK	10
30343	OAK	12	4132	OAK	14	4259	OAK	10
30347	OAK	12	4133	OAK	8	4260	OAK	10
30348	OAK	14	4134	OAK	5	4261	OAK	10
30349	OAK	14	4135	OAK	5	4262	OAK	7
30367	OAK	12	4136	OAK	6	4263	OAK	9
30375	OAK	12	4137	OAK	13	4264	OAK	28
30379	OAK	12	4138	OAK	24	4266	OAK	18
30392	OAK	15	4139	OAK	9	4267	OAK	6
30393	OAK	18	4140	OAK	16	4268	OAK	8
30415	OAK	12	4142	OAK	14	4269	OAK	12
30421	OAK	12	4143	OAK	13	4270	OAK	10
30429	OAK	14	4144	OAK	19	4272	OAK	13
30430	OAK	12	4145	OAK	9	4273	OAK	10
30431	OAK	12	4146	OAK	13	4274	OAK	13
30432	OAK	12	4147	OAK	16	4275	OAK	7

B BETSY LINDSAY, INC.
SURVEYING AND MAPPING
7987 S.W. JACK JAMES DRIVE STUART, FLORIDA 34987
(772)286-5763 (772)286-5933 FAX
LICENSED BUSINESS NO. 6852

DATE	REVISIONS

DATE 08/16/2021
SCALE 1"=40'
FIELD BK. SLC3/16-17
DRAWN BY JLS
CHECKED BY EAL

A 27.89 ACRE PARCEL OF LAND IN THE NE 1/4 OF SEC 25,
TWP 35 S, RNG 39 E, ST. LUCIE COUNTY, FLORIDA,

BOUNDARY SURVEY
MARSHALL PROPERTY SERVICES, LLC.

SHEET NO. 5
OF 7 SHEETS
PROJECT NO. 21-92

TREE NUMBER	SPECIES	DBH (INCHES)
4277	OAK	10
4279	OAK	10
4282	OAK	14
4283	OAK	11
4284	OAK	8
4285	OAK	10
4286	OAK	16
4287	OAK	10
4288	OAK	18
4290	OAK	24
4291	OAK	12
4292	OAK	6
4293	OAK	20
4296	OAK	18
4299	OAK	13
4300	OAK	18
4302	OAK	14
4303	OAK	16
4304	OAK	12
4305	OAK	12
4306	OAK	20
4308	OAK	7
4310	OAK	8
4312	OAK	10
4316	OAK	8
4318	OAK	14
4319	OAK	6
4320	OAK	11
4321	OAK	15
4322	OAK	12
4325	OAK	13
4326	OAK	6
4327	OAK	10
4328	OAK	7
4329	OAK	6
4331	OAK	7
4333	OAK	12
4339	OAK	30
4341	OAK	16
4343	OAK	18
4345	OAK	20
4350	OAK	18
4356	OAK	12
4359	OAK	20
4361	OAK	12
4364	OAK	13
4366	OAK	13
4369	OAK	16
4370	OAK	12
4371	OAK	12
4373	OAK	13
4374	OAK	12
4378	OAK	13
4391	OAK	12
4392	OAK	24
4394	OAK	12
4397	OAK	16
4399	OAK	16
4407	OAK	19
4409	OAK	15
4410	OAK	12
4412	OAK	18
4414	OAK	13
4419	OAK	14
4421	OAK	13
4422	OAK	20
4429	OAK	12
4433	OAK	13
4436	OAK	12
4437	OAK	12
4438	OAK	14
4443	OAK	12
4444	OAK	18
4452	OAK	20

TREE NUMBER	SPECIES	DBH (INCHES)
4454	OAK	16
4456	OAK	24
4463	OAK	13
4472	OAK	18
4478	OAK	18
4488	OAK	13
4490	OAK	12
4491	OAK	27
4493	OAK	13
4494	OAK	13
4496	OAK	30
4497	OAK	13
4501	OAK	14
4506	OAK	14
4513	OAK	13
4518	OAK	16
4525	OAK	17
4526	OAK	18
4530	OAK	15
4541	OAK	14
4542	OAK	13
4543	OAK	13
4547	OAK	18
4557	OAK	13
4562	OAK	18
4568	OAK	12
4572	OAK	18
4573	OAK	14
4574	OAK	12
4576	OAK	19
4582	OAK	13
4583	OAK	18
4584	OAK	18
4589	OAK	30
4596	OAK	14
4604	OAK	14
4646	OAK	20
4648	OAK	20
4651	OAK	26
4658	OAK	18
4659	OAK	13
4660	OAK	12
4661	OAK	12
4662	OAK	13
4665	OAK	14
4667	OAK	12
30009	OAK	8
30010	OAK	16
30017	OAK	8
30018	OAK	26
30019	OAK	14
30020	OAK	8
30021	OAK	8
30024	OAK	8
30025	OAK	10
30026	OAK	8
30027	OAK	8
30028	OAK	14
30033	OAK	6
30034	OAK	6
30035	OAK	6
30036	OAK	6
30037	OAK	8
30038	OAK	8
30039	OAK	6
30040	OAK	18
30041	OAK	12
30042	OAK	10
30043	OAK	22
30045	OAK	10
30048	OAK	8
30056	OAK	14
30057	OAK	14
30058	OAK	8

TREE NUMBER	SPECIES	DBH (INCHES)
30062	OAK	6
30064	OAK	10
30068	OAK	10
30072	OAK	8
4247	OAK	11
4248	OAK	9
4406	OAK CLUMP	12
4430	OAK CLUMP	8
4439	OAK CLUMP	12
4507	OAK CLUMP	12
4508	OAK CLUMP	12
4216	OAK DBL	10
4280	OAK DBL	7
4297	OAK DBL	10&18
4405	OAK DBL	12
4588	OAK DBL	14
4348	OAK QUAD	8
4271	OAK TRIP	12
30082	PINE	12
30091	PINE	14
30103	PINE	12
30105	PINE	14
30110	PINE	14
30114	PINE	12
30115	PINE	12
30116	PINE	12
30132	PINE	14
30135	PINE	24
30141	PINE	15
30142	PINE	15
30144	PINE	14
30149	PINE	14
30151	PINE	15
30152	PINE	15
30153	PINE	15
30167	PINE	20
30168	PINE	15
30169	PINE	18
30172	PINE	14
30173	PINE	14
30175	PINE	14
30178	PINE	8
30179	PINE	15
30181	PINE	6
30182	PINE	12
30183	PINE	14
30184	PINE	25
30187	PINE	14
30220	PINE	15
30277	PINE	24
30278	PINE	15
30279	PINE	18
30280	PINE	14
30281	PINE	18
30282	PINE	18
30283	PINE	14
30305	PINE	15
30306	PINE	15
30307	PINE	12
30308	PINE	15
30324	PINE	15
30334	PINE	28
30341	PINE	12
30342	PINE	15
30346	PINE	15
30352	PINE	12
30356	PINE	12
30360	PINE	15
30361	PINE	12
30362	PINE	14
30363	PINE	15
30365	PINE	12
30366	PINE	12
30368	PINE	12

TREE NUMBER	SPECIES	DBH (INCHES)
30369	PINE	14
30370	PINE	12
30371	PINE	24
30372	PINE	15
30381	PINE	28
30382	PINE	14
30383	PINE	14
30384	PINE	18
30387	PINE	12
30390	PINE	18
30391	PINE	24
30394	PINE	14
30395	PINE	18
30397	PINE	15
30398	PINE	15
30400	PINE	18
30401	PINE	14
30402	PINE	18
30403	PINE	12
30404	PINE	12
30405	PINE	12
30407	PINE	18
30408	PINE	18
30410	PINE	18
30418	PINE	12
30419	PINE	12
30420	PINE	12
30422	PINE	14
30428	PINE	18
30433	PINE	14
30445	PINE	15
30448	PINE	15
30449	PINE	15
30453	PINE	24
30456	PINE	18
30458	PINE	14
30459	PINE	15
30466	PINE	15
30468	PINE	14
30470	PINE	15
30471	PINE	12
30472	PINE	12
30473	PINE	12
30475	PINE	12
30477	PINE	15
30482	PINE	15
30488	PINE	14
30491	PINE	12
30494	PINE	28
30495	PINE	15
30496	PINE	12
30499	PINE	12
30500	PINE	12
30501	PINE	18
30503	PINE	14
30505	PINE	14
30512	PINE	14
30513	PINE	14
30514	PINE	15
30517	PINE	15
30520	PINE	16
30521	PINE	16
30522	PINE	15
30523	PINE	15
30524	PINE	14
30525	PINE	12
30526	PINE	12
30527	PINE	12
30528	PINE	12
30529	PINE	18
30530	PINE	15
30535	PINE	15
30536	PINE	20
30540	PINE	12

TREE NUMBER	SPECIES	DBH (INCHES)
30542	PINE	15
30547	PINE	18
30549	PINE	20
30556	PINE	12
30557	PINE	15
30558	PINE	14
30562	PINE	14
30568	PINE	18
30573	PINE	12
30574	PINE	15
30584	PINE	14
30590	PINE	12
30591	PINE	15
30594	PINE	12
30596	PINE	18
30597	PINE	12
30598	PINE	15
30604	PINE	14
30606	PINE	15
30609	PINE	15
30610	PINE	15
30613	PINE	15
30615	PINE	15
30618	PINE	15
30621	PINE	24
30622	PINE	12
30624	PINE	15
30629	PINE	15
30631	PINE	18
30632	PINE	18
30635	PINE	15
30638	PINE	12
30640	PINE	15
30641	PINE	14
30644	PINE	15
30645	PINE	15
30646	PINE	15
30649	PINE	15
30651	PINE	14
30652	PINE	14
30657	PINE	14
30658	PINE	14
30661	PINE	15
30662	PINE	18
30668	PINE	15
30671	PINE	12
30673	PINE	12
30674	PINE	14
30675	PINE	12
30683	PINE	20
4166	PINE	13
4167	PINE	11
4169	PINE	8
4170	PINE	12
4173	PINE	11
4175	PINE	16
4178	PINE	13
4180	PINE	15
4182	PINE	14
4183	PINE	12
4187	PINE	14
4195	PINE	9
4205	PINE	8
4223	PINE	11
4235	PINE	9
4237	PINE	10
4238	PINE	13
4239	PINE	9
4241	PINE	9
4242	PINE	12
4243	PINE	12
4249	PINE	12
4250	PINE	14
4257	PINE	12

TREE NUMBER	SPECIES	DBH (INCHES)
4307	PINE	14
4311	PINE	10
4323	PINE	18
4337	PINE	13
4347	PINE	18
4349	PINE	15
4357	PINE	13
4376	PINE	13
4384	PINE	16
4395	PINE	12
4427	PINE	18
4444	PINE	13
4449	PINE	12
4450	PINE	12
4451	PINE	12
4453	PINE	16
4485	PINE	14
4486	PINE	18
4534	PINE	13
4535	PINE	13
4536	PINE	18
4538	PINE	14
4539	PINE	14
4581	PINE	12
4601	PINE	13
4605	PINE	14
4612	PINE	13
4613	PINE	14
4619	PINE	12
4625	PINE	18
4629	PINE	14
4632	PINE	14
4641	PINE	16
4649	PINE	12
4650	PINE	12
4654	PINE	14
4664	PINE	14
30059	PINE	14
30063	PINE	24
30067	PINE	12
30861	ROAL POINCIANA	15

TREE NUMBER	SPECIES	DBH (INCHES)	CLEAR TRUNK HEIGHT (FT)
4172	PALM	12	15
4179	PALM	18	15
4189	PALM	12	20
4190	PALM	12	20
4191	PALM	12	10
4192	PALM	12	10
4194	PALM	13	20
4202	PALM	12	15
4204	PALM	13	15
4217	PALM	13	20
4276	PALM	12	20
4294	PALM	14	25
4295	PALM	13	25

TREE NUMBER	SPECIES	DBH (INCHES)	CLEAR TRUNK HEIGHT (FT)
4614	PALM	12	20
4615	PALM	12	20
4616	PALM	12	15
4617	PALM	11	15
4620	PALM	9	20
4621	PALM	10	20
4623	PALM	15	25
4624	PALM	12	15
4626	PALM	14	20
4627	PALM	12	15
4630	PALM	13	15
4631	PALM	13	20
4633	PALM	12	20
4634	PALM	12	20
4636	PALM	12	20
4637	PALM	12	20
4639	PALM	10	15
4640	PALM	10	15
4642	PALM	13	20
4643	PALM	13	20
4644	PALM	13	20
4647	PALM	12	20
4652	PALM	12	25
4653	PALM	14	25
4656	PALM	14	25
4666	PALM	14	20
4668	PALM	10	15
30002	PALM	13	20
30004	PALM	13	25
30005	PALM	13	20
30006	PALM	10	20
30007	PALM	15	20
30011	PALM	13	15
30012	PALM	13	15
30013	PALM	13	15
30014	PALM	15	15
30015	PALM	14	15
30016	PALM	15	15
30022	PALM	14	20
30023	PALM	13	20
30029	PALM	14	20
30030	PALM	14	20
30031	PALM	14	20
30032	PALM	14	20
30046	PALM	12	15
30047	PALM	8	15
30049	PALM	10	15
30050	PALM	12	15
30051	PALM	12	15
30052	PALM	14	15
30053	PALM	15	15
30054	PALM	14	15
30055	PALM	14	20
30060	PALM	14	20
30061	PALM	14	20
30065	PALM	14	15
30066	PALM	14	15
30069	PALM	14	20
30071	PALM	13	15
30073	PALM	14	15
30075	PALM	14	20
30076	PALM	14	20
30078	PALM	10	15
30084	PALM	14	20
30085	PALM	14	20
30087	PALM	14	20
30089	PALM	18	20
30090	PALM	18	20
30092	PALM	18	20
30097	PALM	14	15
30098	PALM	15	15
30099	PALM	15	15
30100	PALM	15	15

TREE NUMBER	SPECIES	DBH (INCHES)	CLEAR TRUNK HEIGHT (FT)
30108	PALM	15	15
30109	PALM	15	15
30111	PALM	15	20
30112	PALM	15	20
30113	PALM	15	15
30117	PALM	14	20
30118	PALM	14	20
30119	PALM	14	20
30120	PALM	14	15
30121	PALM	14	15
30122	PALM	14	15
30126	PALM	15	20
30127	PALM	15	20
30133	PALM	18	20
30134	PALM	18	20
30139	PALM	15	20
30140	PALM	15	20
30146	PALM	12	20
30147	PALM	14	20
30148	PALM	14	20
30157	PALM	15	20
30158	PALM	15	20
30159	PALM	15	20
30160	PALM	15	20
30161	PALM	15	20
30163	PALM	12	20
30164	PALM	12	20
30165	PALM	15	20
30166	PALM	12	20
30170	PALM	14	20
30171	PALM	12	20
30174	PALM	14	20
30176	PALM	15	20
30177	PALM	14	20
30180	PALM	14	20
30186	PALM	10	20
30188	PALM	14	20
30190	PALM	12	25
30192	PALM	14	25
30194	PALM	18	25
30195	PALM	15	25
30196	PALM	15	25
30197	PALM	15	25
30198	PALM	15	25
30199	PALM	14	25
30200	PALM	14	25
30201	PALM	14	25
30202	PALM	12	25
30203	PALM	18	25
30204	PALM	15	25
30205	PALM	15	25
30206	PALM	15	25
30207	PALM	15	25
30208	PALM	15	25
30209	PALM	12	25
30210	PALM	15	25
30211	PALM	15	25
30212	PALM	15	25
30213	PALM	15	25
30214	PALM	15	25
30215	PALM	15	25
30217	PALM	14	25
30218	PALM	14	25
30219	PALM	14	25
30222	PALM	14	25
30223	PALM	14	25
30224	PALM	15	25
30225	PALM	15	25
30226	PALM	14	25
30227	PALM	14	25
30228	PALM	15	25
30229	PALM	15	25
30234	PALM	15	25

TREE NUMBER	SPECIES	DBH (INCHES)	CLEAR TRUNK HEIGHT (FT)
30235	PALM	15	25
30236	PALM	15	25
30237	PALM	15	25
30239	PALM	14	15
30240	PALM	14	15
30241	PALM	14	15
30242	PALM	14	15
30243	PALM	14	15
30244	PALM	14	15
30245	PALM	14	20
30246	PALM	14	20
30247	PALM	14	20
30249	PALM	14	20
30250	PALM	14	20
30251	PALM	15	15
30252	PALM	15	15
30254	PALM	15	15
30255	PALM	15	15
30256	PALM	14	25
30257	PALM	14	25
30259	PALM	12	15
30260	PALM	15	20
30261	PALM	15	25
30262	PALM	15	25
30263	PALM	15	25
30264	PALM	15	20
30265	PALM	12	20
30266	PALM	12	20
30267	PALM	12	20
30269	PALM	15	20
30284	PALM	15	20
30285	PALM	15	20
30286	PALM	15	20
30287	PALM	15	20
30288	PALM	15	20
30289	PALM	15	20
30290	PALM	15	20
30291	PALM	12	20
30292	PALM	12	20
30293	PALM	12	20
30294	PALM	15	20
30295	PALM	18	20
30296	PALM	18	20
30297	PALM	18	20
30298	PALM	18	20
30299	PALM	14	20
30300	PALM	18	20
30301	PALM	18	20
30302	PALM	18	20
30304	PALM	12	20
30311	PALM	12	20
30312	PALM	15	20
30319	PALM	12	10
30320	PALM	15	20
30322	PALM	15	15
30326	PALM	15	20
30327	PALM	15	20
30328	PALM	15	20
30330	PALM	12	20
30337	PALM	14	15
30340	PALM	12	20
30350	PALM	15	20
30351	PALM	15	20
30353	PALM	14	20
30354	PALM	14	20
30355	PALM	14	20
30364	PALM	12	20
30373	PALM	14	20
30374	PALM	10	20
30376	PALM	14	20
30377	PALM	12	20
30378	PALM	14	20
30380	PALM	14	20

TREE NUMBER	SPECIES	DBH (INCHES)	CLEAR TRUNK HEIGHT (FT)
30385	PALM	14	20
30386	PALM	12	20
30389	PALM	15	15
30396	PALM	14	20
30406	PALM	14	20
30409	PALM	14	20
30412	PALM	12	25
30413	PALM	15	25
30414	PALM	15	25
30416	PALM	14	25
30417	PALM	14	25
30423	PALM	14	20
30425	PALM	12	15
30426	PALM	14	10
30427	PALM	14	10
30435	PALM	15	10
30436	PALM	15	10
30437	PALM	15	10
30438	PALM	15	10
30439	PALM	12	20
30446	PALM	14	15
30447	PALM	14	15
30451	PALM	15	15
30452	PALM	12	15
30454	PALM	14	15
30455	PALM	14	15
30457	PALM	15	15
30461	PALM	15	15
30462	PALM	15	15
30464	PALM	12	10
30465	PALM	14	20
30467	PALM	15	20
30469	PALM	15	20
30478	PALM	14	10
30479	PALM	14	20
30480	PALM	12	20
30489	PALM	14	20
30490	PALM	14	20
30497	PALM	14	20
30498	PALM	14	20
30502	PALM	12	20
30504	PALM	15	15
30506	PALM	14	15
30508	PALM	12	20
30509	PALM	15	20
30510	PALM	15	20
30511	PALM	15	20
30515	PALM	15	20
30516	PALM	12	20
30518	PALM	15	15
30519	PALM	15	20
30534	PALM	15	15
30538	PALM	14	20
30541	PALM	15	20
30543	PALM	12	20
30544	PALM	12	20
30545	PALM	12	20
30546	PALM	12	20
30548	PALM	14	20
30550	PALM	12	20
30551	PALM	14	20
30553	PALM	15	20
30555	PALM	12	15
30559	PALM	14	15
30561	PALM	14	15
30566	PALM	15	15
30567	PALM	12	20
30575	PALM	15	20
30579	PALM	15	20
30580	PALM	15	20
30581	PALM	15	20
30582	PALM	15	15
30586	PALM	15	25

TREE NUMBER	SPECIES	DBH (INCHES)	CLEAR TRUNK HEIGHT (FT)
30587	PALM	15	25
30588	PALM	15	15
30589	PALM	15	25
30593	PALM	12	25
30595	PALM	14	25
30599	PALM	15	20
30600	PALM	15	20
30605	PALM	14	25
30607	PALM	15	25
30611	PALM	14	15
30614	PALM	14	15
30616	PALM	12	15
30617	PALM	12	20
30619	PALM	12	15
30625	PALM	14	20
30626	PALM	14	20
30627	PALM	14	20
30628	PALM	14	20
30630	PALM	14	20
30636	PALM	15	20
30637	PALM	14	15
30639	PALM	15	15
30643	PALM	15	15
30647	PALM	15	20
30648	PALM	15	20
30650	PALM	14	15
30653	PALM	15	15
30655	PALM	14	15
30656	PALM	14	15
30659	PALM	15	20
30660	PALM	15	20
30664	PALM	15	25
30665	PALM	15	20
30666	PALM	12	20
30667	PALM	12	20
30669	PALM	15	20
30670	PALM	15	20
30676	PALM	14	20
30677	PALM	14	20