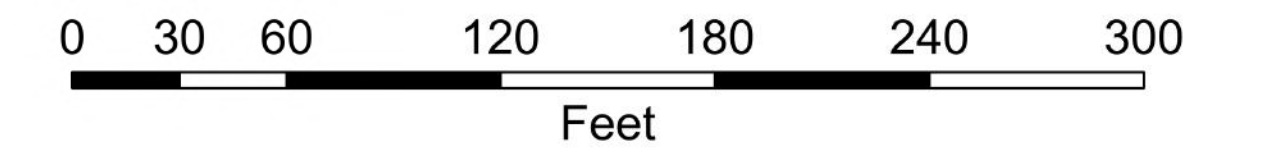
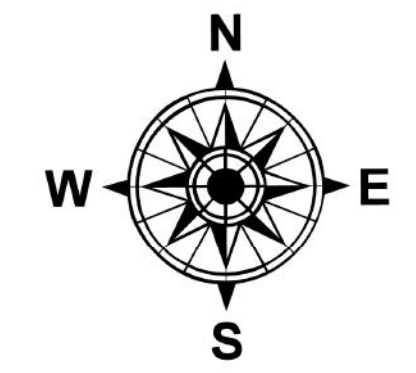
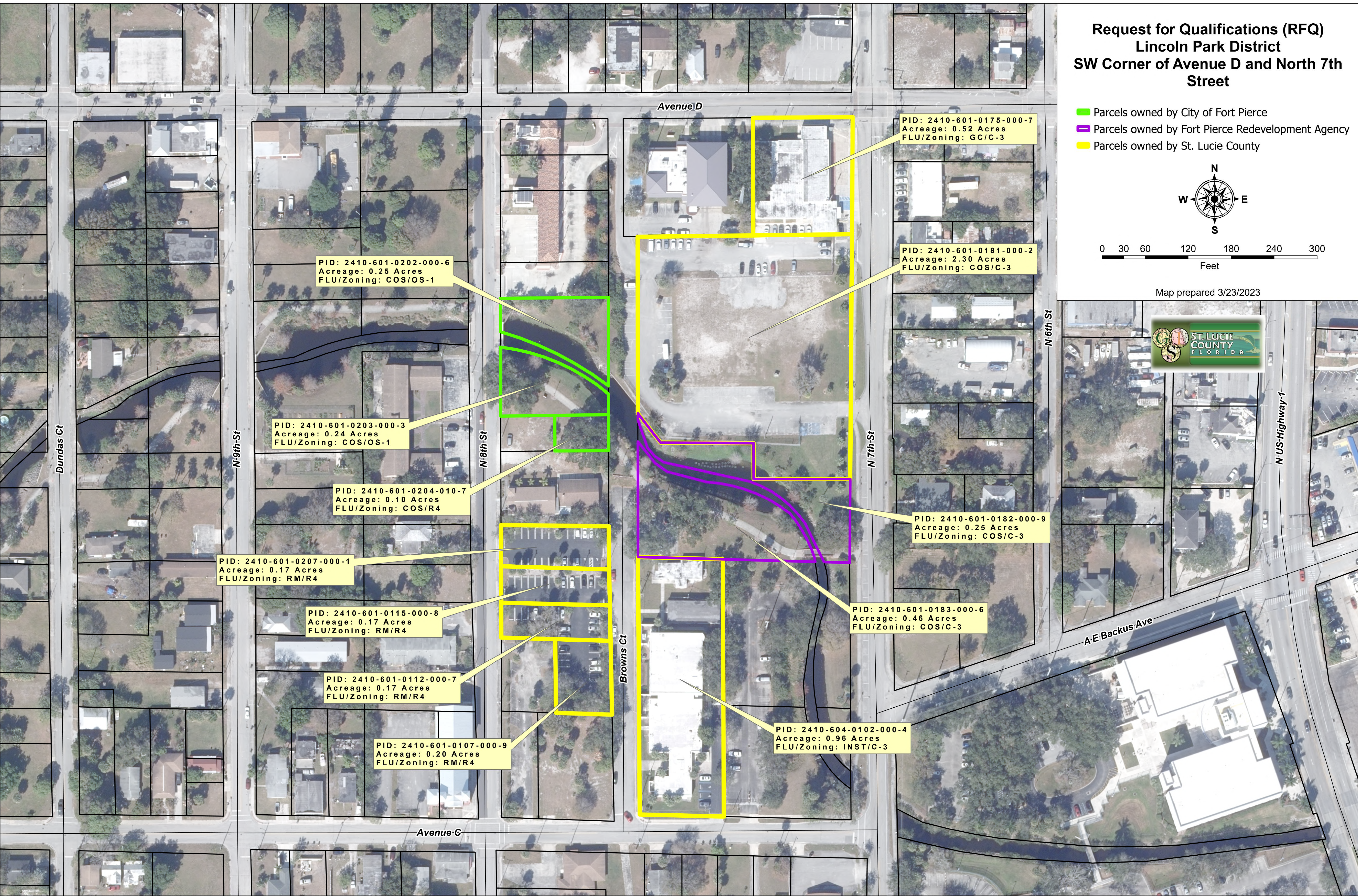


**Request for Qualifications (RFQ)
Lincoln Park District
SW Corner of Avenue D and North 7th Street**

- Parcels owned by City of Fort Pierce
- Parcels owned by Fort Pierce Redevelopment Agency
- Parcels owned by St. Lucie County



Map prepared 3/23/2023



PID: 2410-601-0202-000-6
Acreage: 0.25 Acres
FLU/Zoning: COS/OS-1

PID: 2410-601-0203-000-3
Acreage: 0.24 Acres
FLU/Zoning: COS/OS-1

PID: 2410-601-0204-010-7
Acreage: 0.10 Acres
FLU/Zoning: COS/R4

PID: 2410-601-0207-000-1
Acreage: 0.17 Acres
FLU/Zoning: RM/R4

PID: 2410-601-0115-000-8
Acreage: 0.17 Acres
FLU/Zoning: RM/R4

PID: 2410-601-0112-000-7
Acreage: 0.17 Acres
FLU/Zoning: RM/R4

PID: 2410-601-0107-000-9
Acreage: 0.20 Acres
FLU/Zoning: RM/R4

PID: 2410-601-0175-000-7
Acreage: 0.52 Acres
FLU/Zoning: GC/C-3

PID: 2410-601-0181-000-2
Acreage: 2.30 Acres
FLU/Zoning: COS/C-3

PID: 2410-601-0182-000-9
Acreage: 0.25 Acres
FLU/Zoning: COS/C-3

PID: 2410-601-0183-000-6
Acreage: 0.46 Acres
FLU/Zoning: COS/C-3

PID: 2410-604-0102-000-4
Acreage: 0.96 Acres
FLU/Zoning: INST/C-3