

City of Fort Pierce Waterway Overview



How we can protect our Indian River Lagoon
Our goal is to establish a 10 year comprehensive plan.

Removal of derelict vessels

Implement anchorage limitation zones

Educate/Compliance/Enforcement of our waterways

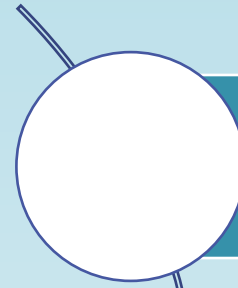
Waste disposal compliance

Anchoring of
vessels
throughout our
city limit
waterways

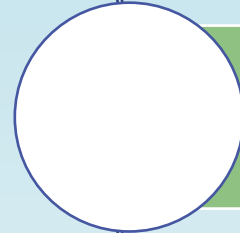


Fort Pierce Waterway Boundaries

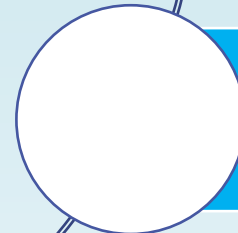
State of Florida anchoring restrictions



Within 150' of any marina, boat ramp, boatyard, or vessel launching or loading facility



Within 300' of a superyacht repair facility



Within 100' outward from the marked boundary of a public mooring field or a lesser distance if approved by the local government within which the mooring field is located

Three options for managing anchoring:

Leave current situation as is

Establish Mooring field(s)

**Establish an anchorage
limitation zone**

**Anchorage
limitation
zone/zones**

(Must be established by
St. Lucie County)

- Be less than 100 acres in size
- Not include any mooring field or marina; and
- Be clearly marked with signs and buoys
- Vessels may not anchor more than 45 consecutive days in any 6-month period in any anchorage limitation area

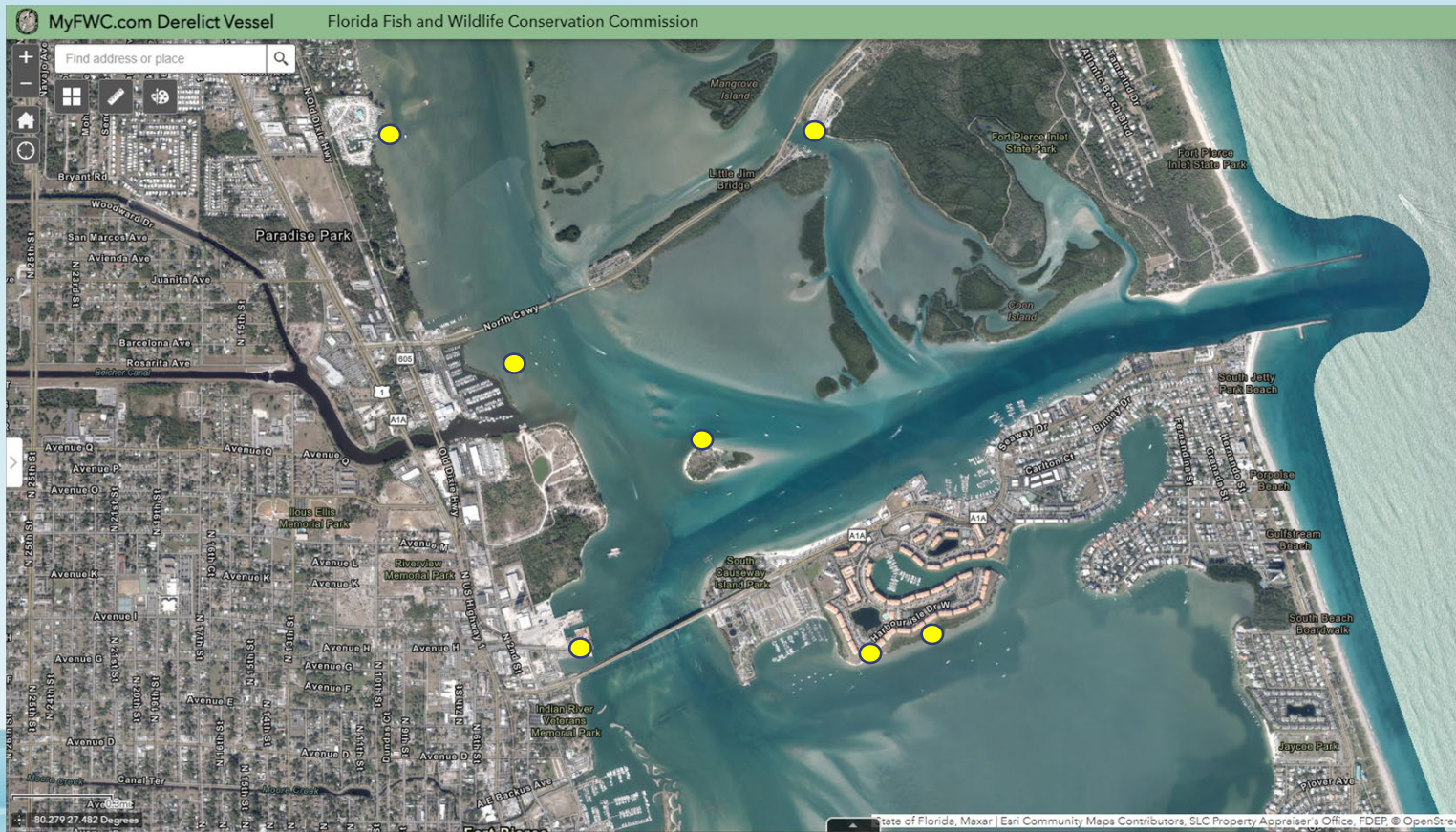
Removal of Derelict Vessels

FWC funded At Risk Vessel program
Turn In Program

Must be Florida registered

Must have at least one citation

Grant programs



Yellow icons on map indict
current derelict vessels

Law Enforcement

St. Lucie County
Sheriff's Department

- Citizens on Patrol

Fort Pierce Police
Department

Florida Wildlife
Commission

United States Coast
Guard

United States
Customs



Sewage disposal

- Vessels must have current disposal logs.
- Untreated sewage discharges are prohibited within three miles from shore.
- In order to discharge within three miles, sewage must be treated using a U.S. Coast Guard-approved Type I or Type II MSD. Alternatively, sewage may be stored onboard in a holding tank (Type III MSD)

There are three types of marine sanitation devices (MSDs): Type I, Type II and Type III.

Type I MSDs are flow-through devices, which are suitable for vessels up to 65 feet in length. These devices use a combination of maceration and disinfection to treat vessel sewage. After pulverizing the solids, the effluent is exposed to disinfectants (often, chlorine tablets) that reduce bacteria levels to below the established limits under the Clean Water Act. In some cases, bactericide can be generated from the saltwater using special electrodes, so that no added disinfectant products are needed.

Type II MSDs are flow-through devices suitable for larger vessels. Type II devices are biological systems. First, sewage is aerated so that the bacteria already present in the sewage can thrive and begin to consume/break down the sewage as their food supply. As with the Type I devices, the remaining liquid waste is then treated via contact with chlorine tablets, UV disinfection, or other methods of disinfection. Overall, Type II devices can achieve better treatment levels than Type I devices because of the biological component of the system, as opposed to maceration.

Type III MSDs are holding tanks which do not treat sewage onboard the vessel. These devices are designed to store sewage effluent while preventing overboard discharge.

Recommendation for sewage disposal

Pump Out Service (contractor)

Vessels anchored or moored for more than ten consecutive days, and which are required to have a marine sanitation device in accordance with F.S. § 327.53, must provide proof of pump out. In 2013, Monroe County partnered with the [State of Florida Department of Environmental Protection Clean Vessel Act Program](#) to expand and contract the services to a private vendor in order to provide the services Keys-wide. As of November 2021, we are the contractor for the Florida Department of Environmental Protection to provide this free pumpout service throughout the Florida Keys. The service is provided free to anchored-out vessels to ensure boaters in our many anchorages ([See maps of approved anchorages](#)) have the means to properly and legally pump out. For more information, please also visit the [Monroe County](#) website.



RECOMMENDATIONS

- CREATE A WATERWAY PLANNING COMMITTEE TO ESTABLISH AND OVERSEE THE CITY WATERWAY BOUNDARIES AND TO MAKE RECOMMENDATIONS WHICH WILL ASSIST THE CITY OF FORT PIERCE IN ITS SHORELINE RESILIENCY PROGRAM
- ESTABLISH A LONG TERM COMPREHENSIVE PLAN FOR THE CITY WATERWAYS AND MARINAS
- ESTABLISH A BOAT WASTE INSPECTION SYSTEM
- CREATE A DESIGNATED SWIM ZONE AT CAUSEWAY ISLAND PARK

ALTERNATIVES:

- HIRE TWO MARINE CODE ENFORCEMENT OFFICERS TO ENFORCE AND OVERSEE
- REQUIRE ALL MARINAS AND BOAT RAMPS TO INSTALL WORKING PUMP OUT SYSTEMS

