



RESOLUTION 23-R14

Initiating the Interlocal Service Boundary Agreement process
with St. Lucie County



Interlocal Service Boundary Agreement (ISBA)



ISBA process gives the City and County an opportunity to negotiate the transition of services for a defined area.



ISBA is tailored to address the needs of the specific area and each agreement is unique.



Approval of this Resolution does not automatically annex this area, it initiates the process with St. Lucie County.





Why Annex?

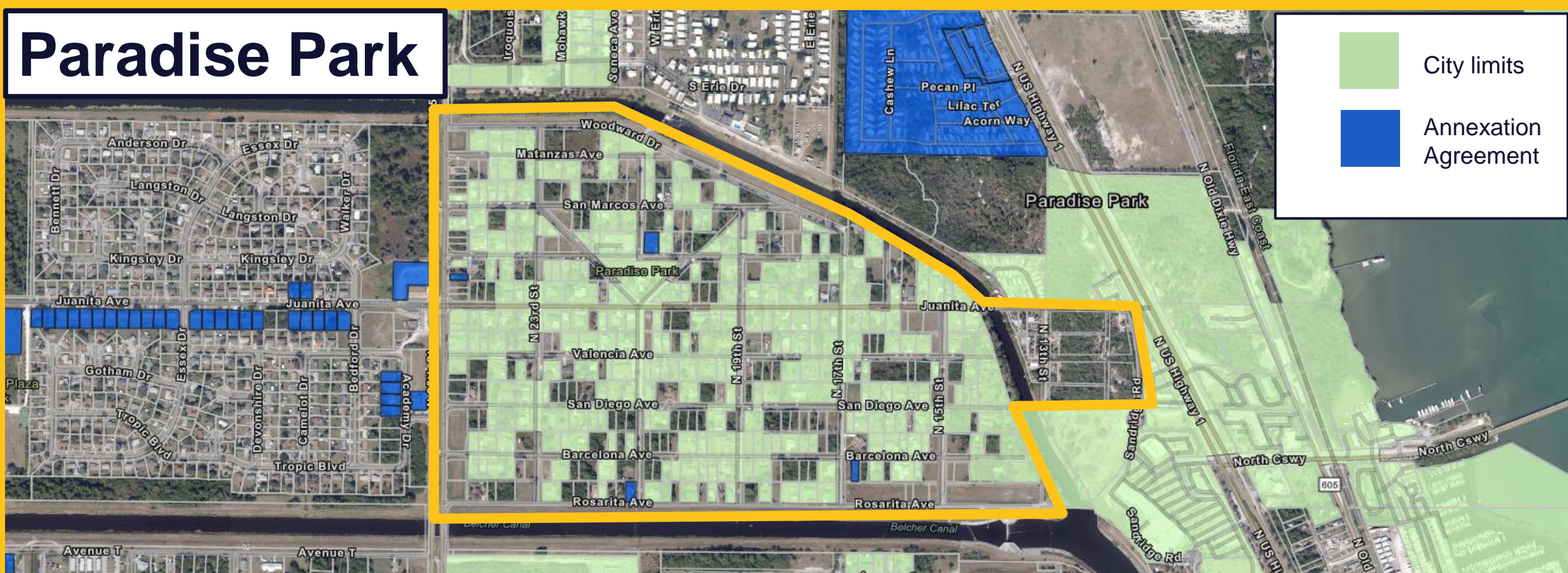
Proper annexation of areas adjacent to the city is crucial to establishing and maintaining **operational efficiency**.

Unclear city limits can lead to administrative **confusion, inefficiency, duplication, and excessive costs**.

Through annexation, administrative and technical personnel can consistently address the area's needs with a **clear understanding of municipal and county responsibilities**.



Paradise Park



220 parcels estimated to be annexed – approximately 75 acres

- 30 owned by St. Lucie County/DOT
- 33 single family residences
- 157 vacant parcels – 6 of which are commercial

Recommendation:

Approval of Resolution 23-R14 to initiate ISBA process with St. Lucie County.

Next Steps:

If approved, staff will forward Resolution to St. Lucie County to initiate discussions regarding the transition terms prior to bringing agreement back for execution.