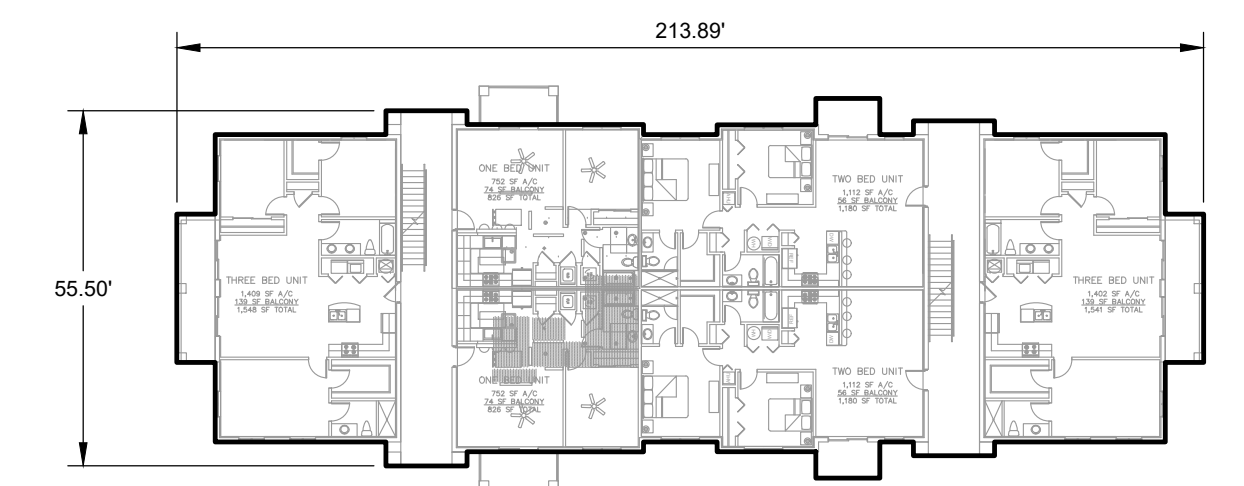
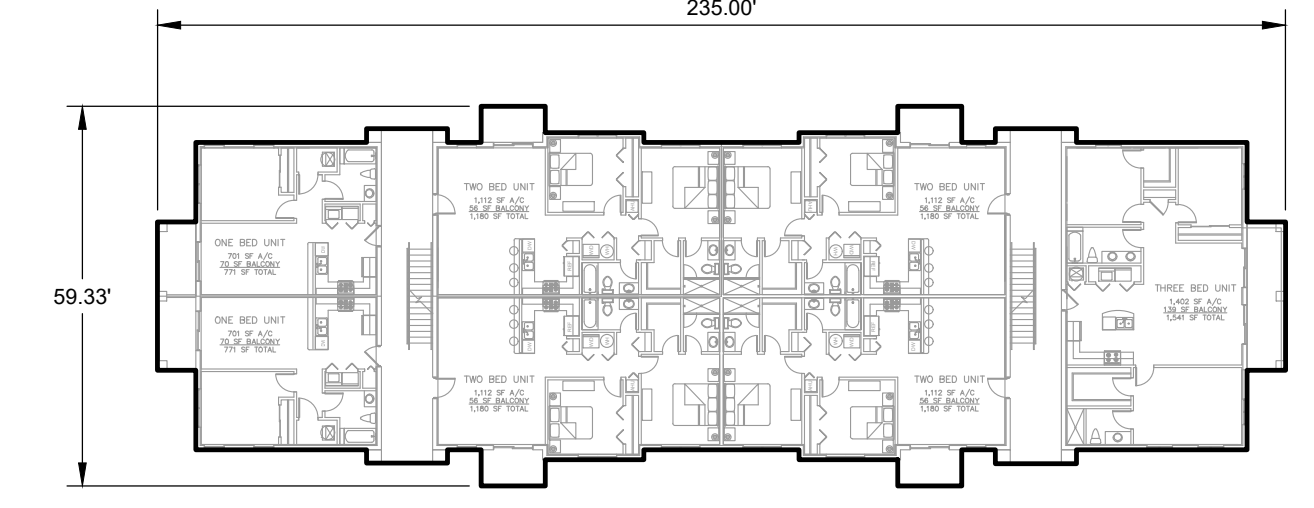


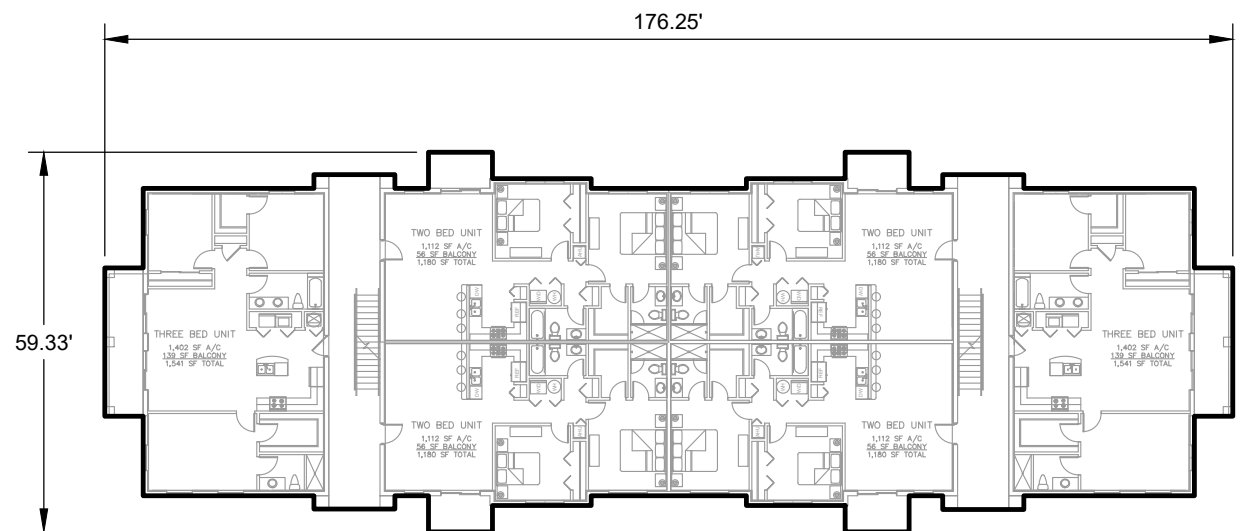
THIS DOCUMENT, TOGETHER WITH THE CONCEPTS AND DESIGNS PRESENTED HEREIN, AS AN INSTRUMENT OF SERVICE, IS INTENDED ONLY FOR THE SPECIFIC PURPOSE AND CLIENT FOR WHICH IT WAS PREPARED. REUSE OF AND IMPROPER RELIANCE ON THIS DOCUMENT WITHOUT WRITTEN AUTHORIZATION AND ADOPTION BY EDC, INC. SHALL BE WITHOUT LIABILITY TO EDC, INC.



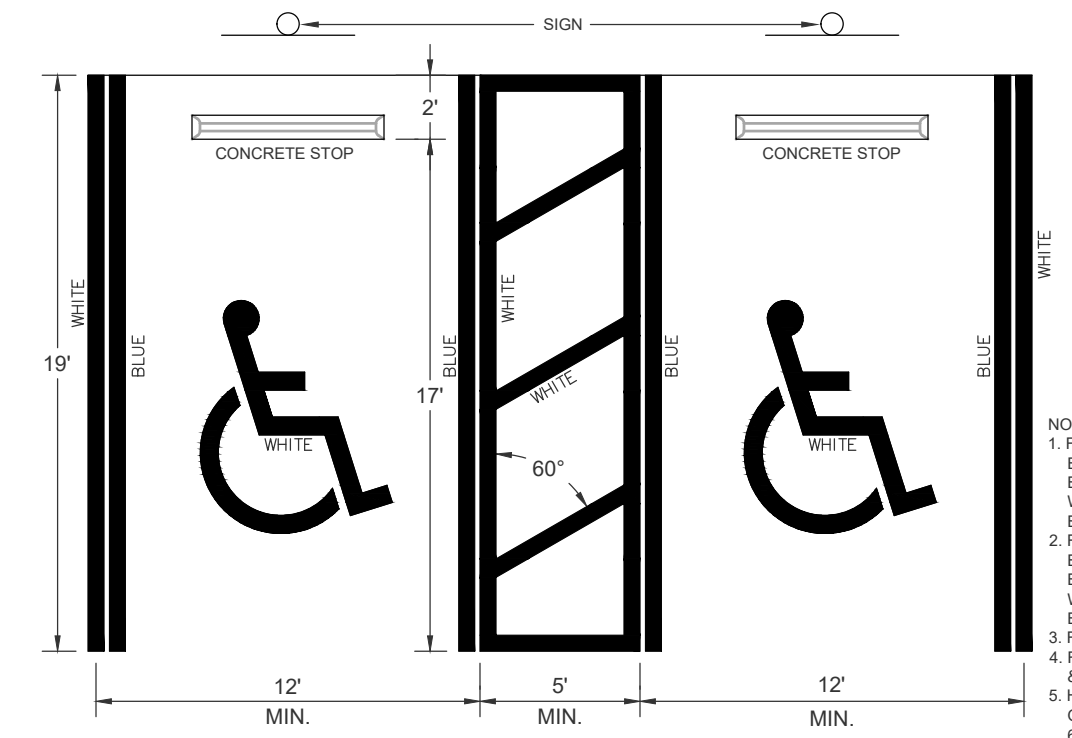
3-STORY BUILDING:
(2) 1-BEDS, (2) 2-BEDS, (2) 3-BEDS
PER FLOOR x 3 FLOORS
7,799 G.S.F.



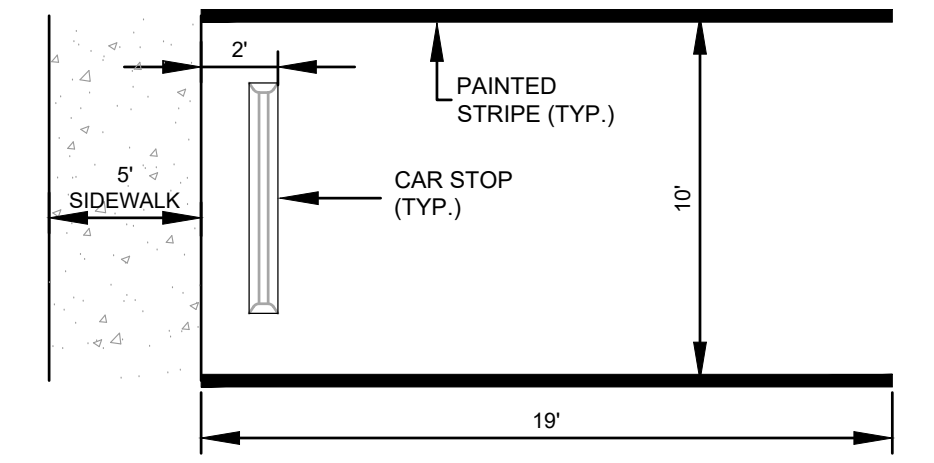
2-STORY BUILDING (TYPE 2A):
(2) 1-BEDS, (4) 2-BEDS, (1) 3-BEDS
PER FLOOR x 2 FLOORS
8,592 G.S.F.



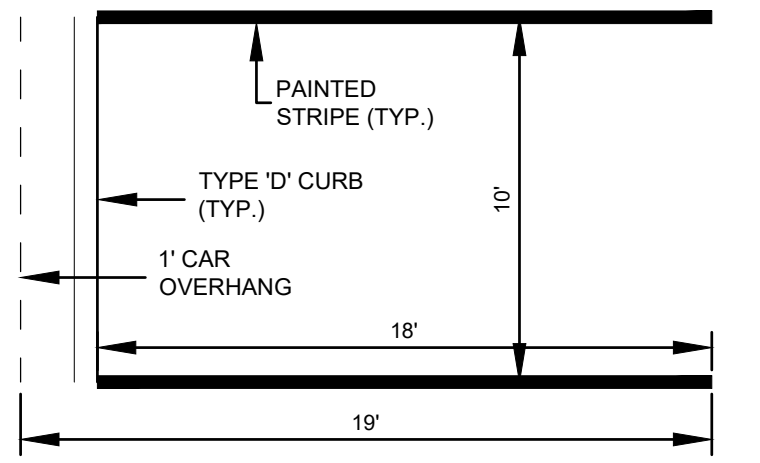
2-STORY BUILDING (TYPE 2B):
(0) 1-BEDS, (4) 2-BEDS, (2) 3-BEDS
PER FLOOR x 2 FLOORS
8,592 G.S.F.



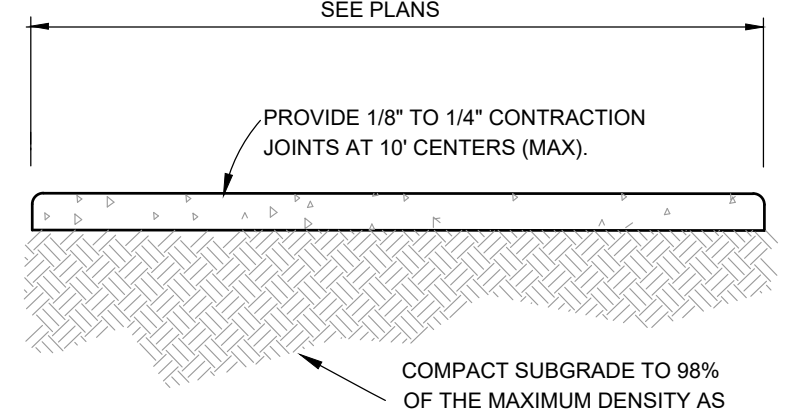
HANDICAPPED SPACE DETAIL



TYPICAL 19' PARKING STALL
N.T.S.



TYPICAL 18' PARKING STALL W/ OVERHANG
N.T.S.



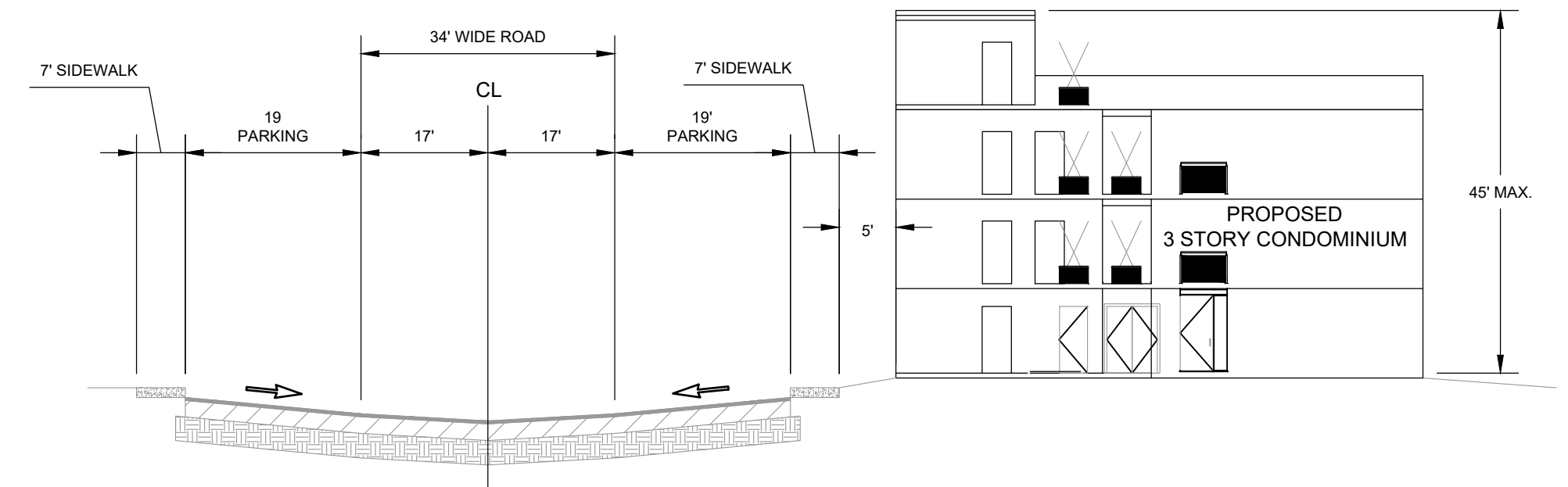
4" THICK SIDEWALK DETAIL

NOTES:
 1. Use 3,000 P.S.I. Concrete At 28 Days for sidewalk construction.
 2. Sidewalk thickness to be increased to 6" thick at driveway locations.
 3. All repairs required during construction shall be removed and replaced 10' minimum to next full joint.

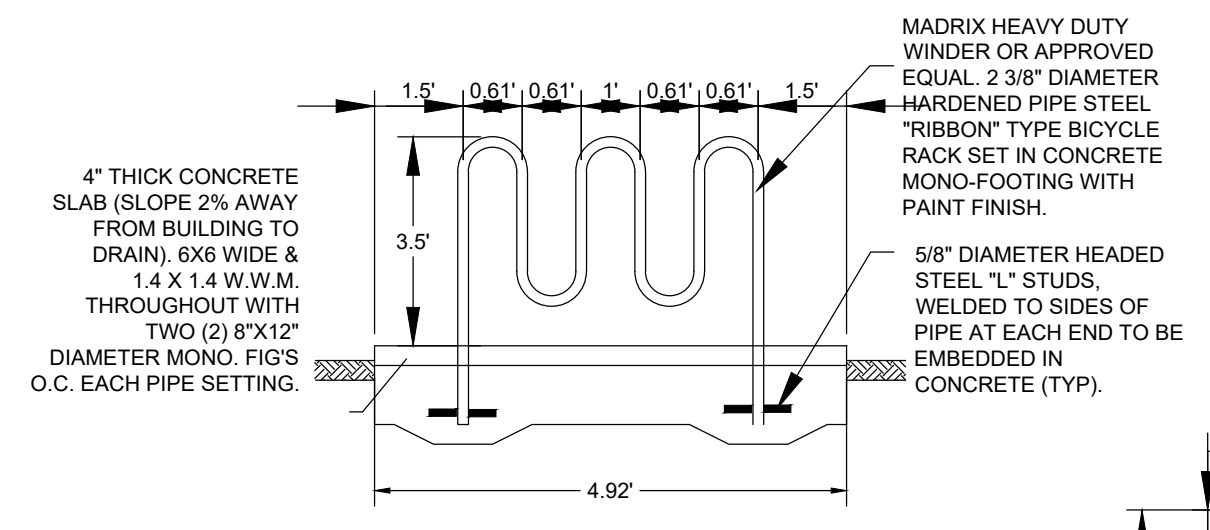
TYPICAL PAVEMENT SECTION
N.T.S.

8" LIMEROCK OR COQUINA BASE
 98% MODIFIED PROCTOR TEST
 MAXIMUM DRY DENSITY,
 LIMEROCK BEARING RATIO (LBR)
 OF AT LEAST 100

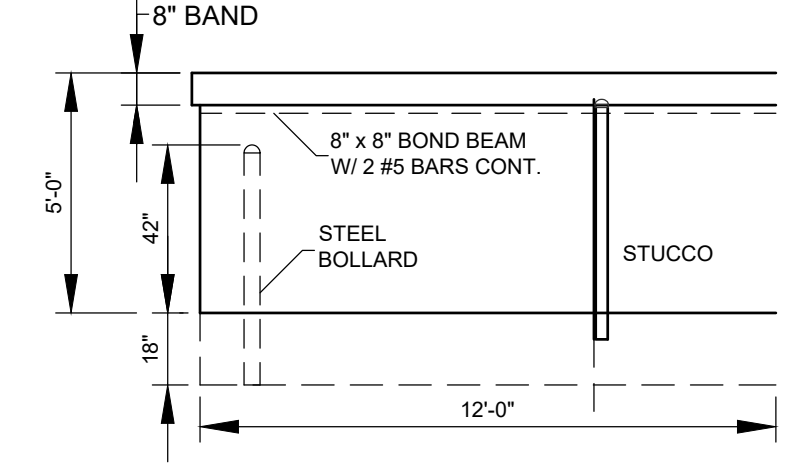
12" STABILIZED SUBGRADE
 98% MODIFIED PROCTOR TEST
 MAXIMUM DRY DENSITY,
 STABILIZED TO A LIMEROCK BEARING
 RATIO (LBR) OF AT LEAST 40



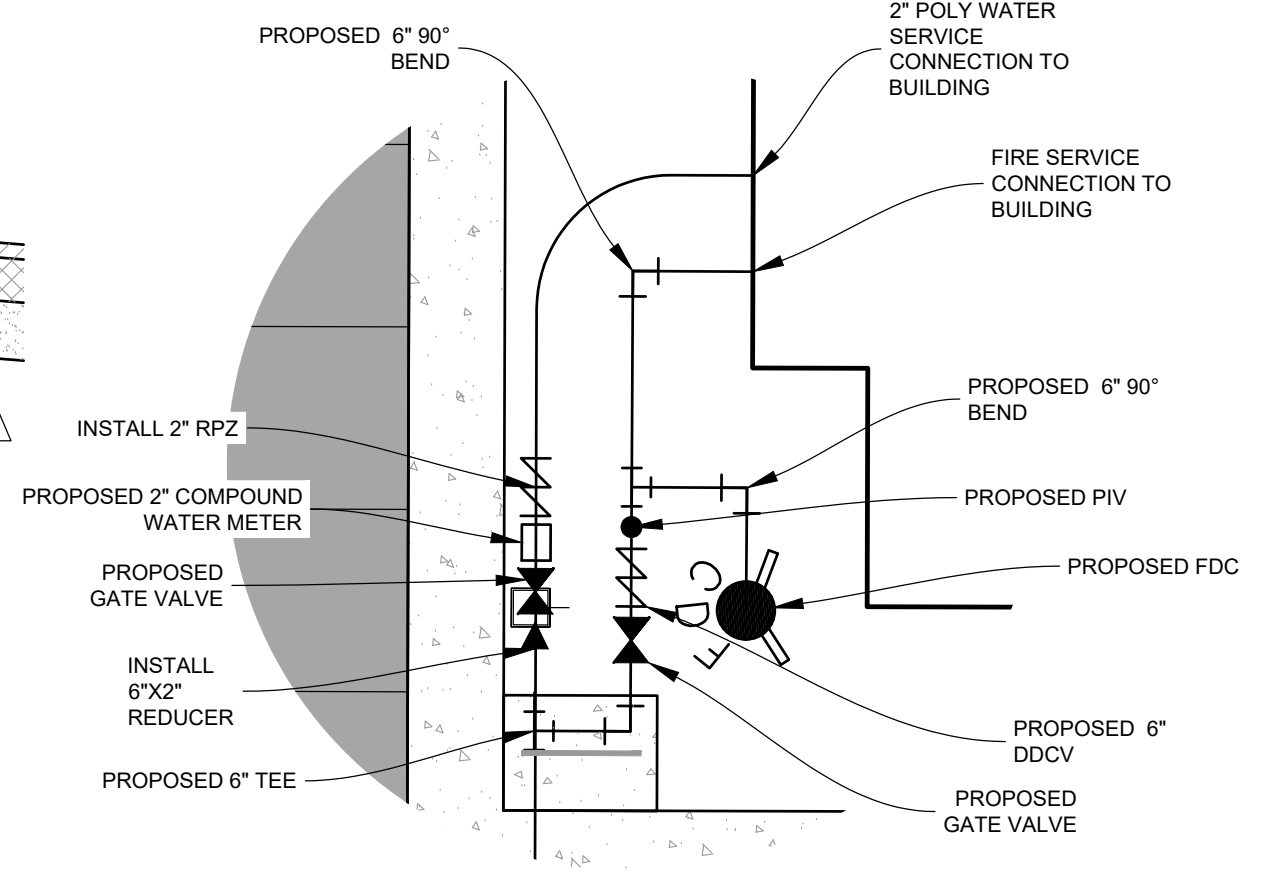
TYPICAL SECTION
SCALE: 1"=10'



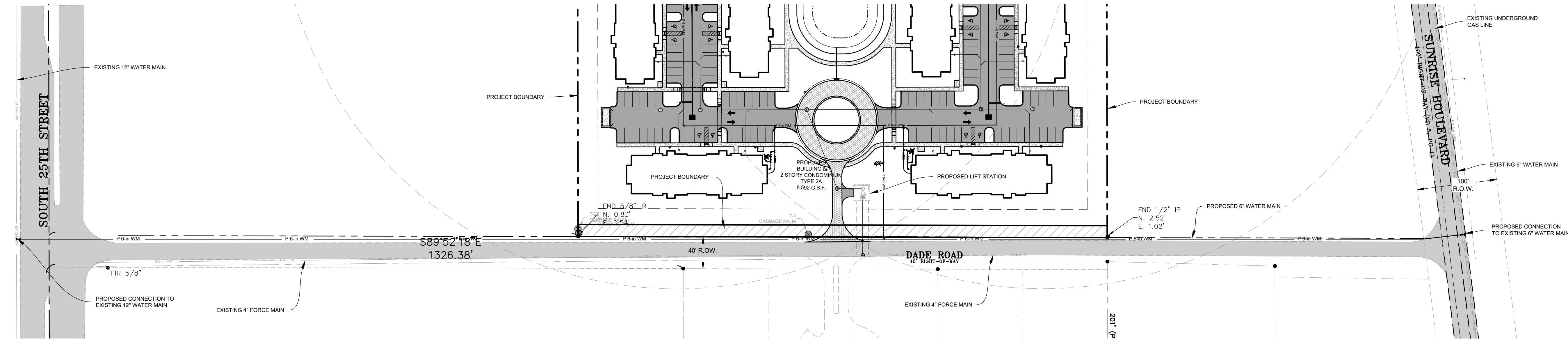
TYPICAL BIKE RACK DETAIL
N.T.S.



24'X12' DUMPSTER DETAIL



TYPICAL WATER SERVICE CONNECTION BLOW UP
SCALE: 1" = 10'



OFFSITE WATER MAIN CONNECTION
SCALE: 1" = 70'

EDC ENGINEERS & SURVEYORS ENVIRONMENTAL
 10250 VILLAGE PARKWAY SUITE 201
 PORT ST. LUCIE, FL 34987
 772-462-2455
 www.edc-inc.com

F.B.P.E. CERTIFICATE OF AUTHORIZATION 8993
 L.B. CERTIFICATE OF AUTHORIZATION 8098

DESIGNED BY	VER
DRAWN BY	VER
CHECKED BY	VER
FILE NAME	19-352-001-06-05-02.rvt
DETAILS	LAYOUT
SCALE	AS SHOWN
DATE	06/20/22

REVISION	DATE	DESCRIPTION
1	06/20/22	REVISED PER CITY & DPWA COMMENTS

PRIVILEGE DEVELOPMENT
DADE ROAD & SUNRISE BLVD
MULTI FAMILY RESIDENTIAL
FLORIDA
SITE PLAN DETAILS
 CITY OF FORT PIERCE

EDC ENGINEERS & SURVEYORS ENVIRONMENTAL
 10250 SW VILLAGE PARKWAY - SUITE 201
 PORT SAINT LUCIE, FL 34987
 772-462-2455