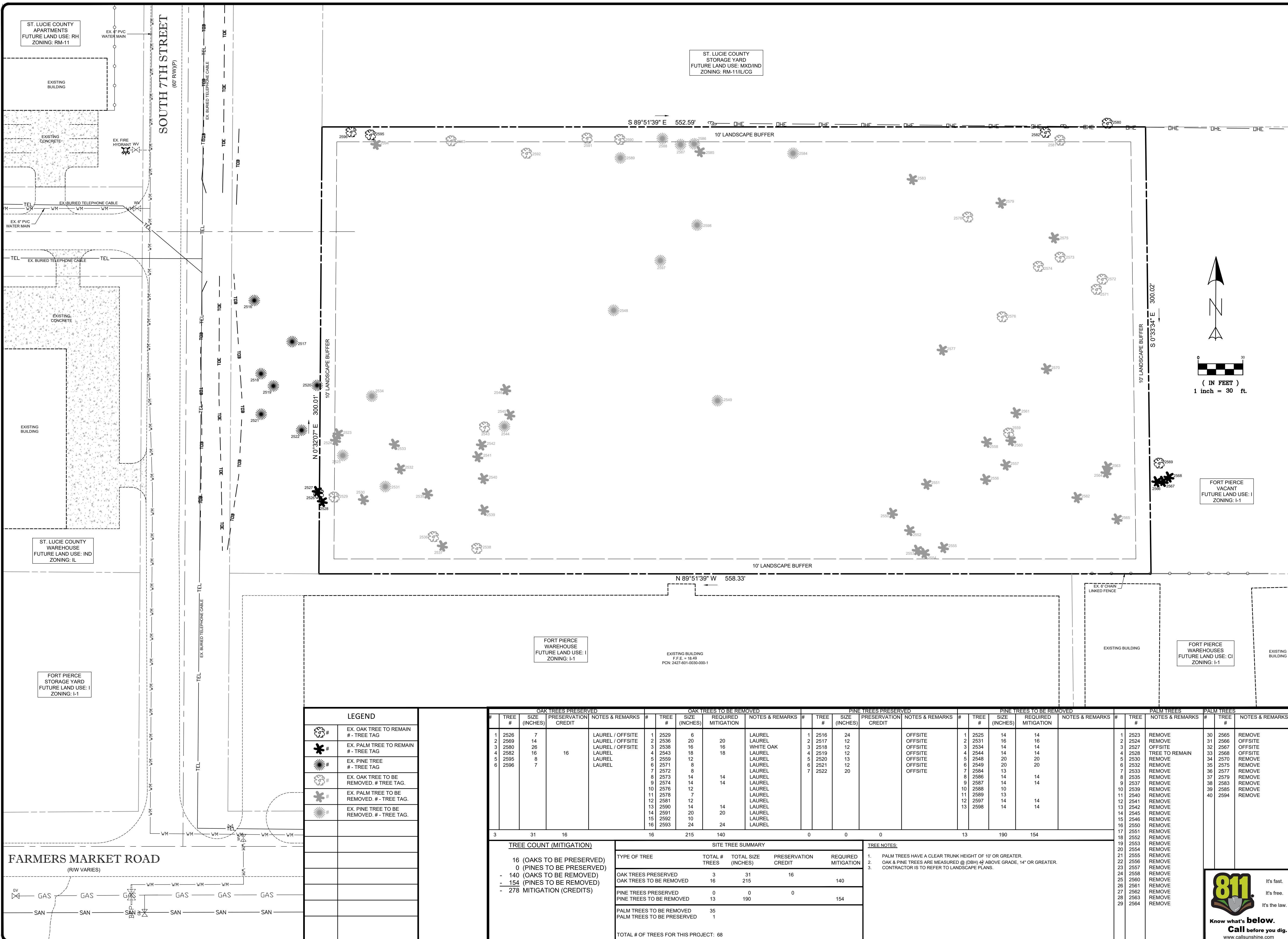


Z:\EDC\2021\21-269 - K & K Properties - 7th Street CSP & Pre-App Engineering\AutoCAD\DWG\21-269 01-04-2023.dwg, TREE MITIGATION PLAN, 1/5/2023 11:38:51 AM, Bob Frost EDC, Inc., EDC, Inc.

THIS DOCUMENT, TOGETHER WITH THE CONCEPTS AND DESIGNS PRESENTED HEREIN, IS AN INSTRUMENT OF SERVICE. IT IS INTENDED ONLY FOR THE SPECIFIC PURPOSE AND CLIENT FOR WHICH IT WAS PREPARED. REUSE OR IMPROPER RELIANCE ON THIS DOCUMENT WITHOUT WRITTEN AUTHORIZATION AND ADOPTION BY EDC, INC. SHALL BE WITHOUT LIABILITY TO EDC, INC.




**ENGINEERS & SURVEYORS
ENVIRONMENTAL & LAND PLANNERS
INTERIOR DESIGNERS**

**10250 VILLAGE PARKWAY
SUITE 201
PORT ST. LUCIE, FL 34987
772-462-2455**

F.P.E. CERTIFICATE OF AUTHORIZATION 9935
L.B. CERTIFICATE OF AUTHORIZATION 8098

DESIGNED BY	RWF
DRAWN BY	RWF
FILE NAME	21-269(01-04-2023).dwg
TREE MITIGATION PLAN LAYOUT	
SCALE	1" = 30'
DATE	04 MARCH 2022

REVISION COMMENTS	
DATE	
11-30-2022	UPDATED TREE MITIGATION TABLE PER NEW SITE PLAN LAYOUT

K AND K PROPERTIES

TREE MITIGATION PLAN

FORT PIERCE

FLORIDA



**ENGINEERS & SURVEYORS
ENVIRONMENTAL & LAND PLANNERS
INTERIOR DESIGNERS**

**10250 SW VILLAGE PARKWAY - SUITE 201
PORT SAINT LUCIE, FL 34987
772-462-2455**

21-269

3 OF 3

LEGEND	
	EX. OAK TREE TO REMAIN # - TREE TAG
	EX. PALM TREE TO REMAIN # - TREE TAG
	EX. PINE TREE # - TREE TAG
	EX. OAK TREE TO BE REMOVED. # - TREE TAG.
	EX. PALM TREE TO BE REMOVED. # - TREE TAG.
	EX. PINE TREE TO BE REMOVED. # - TREE TAG.

OAK TREES PRESERVED				OAK TREES TO BE REMOVED				PINE TREES PRESERVED				PINE TREES TO BE REMOVED				PALM TREES		PALM TREES			
#	TREE #	SIZE (INCHES)	PRESERVATION CREDIT	NOTES & REMARKS	#	TREE #	SIZE (INCHES)	REQUIRED MITIGATION	NOTES & REMARKS	#	TREE #	SIZE (INCHES)	REQUIRED MITIGATION	NOTES & REMARKS	#	TREE #	NOTES & REMARKS	#	TREE #	NOTES & REMARKS	
1	2526	7		LAUREL / OFFSITE	1	2529	6		LAUREL	1	2516	24		OFFSITE	1	2523	REMOVE	30	2565	REMOVE	
2	2569	14		LAUREL / OFFSITE	2	2536	20		LAUREL	2	2517	12		OFFSITE	2	2524	REMOVE	31	2566	OFFSITE	
3	2580	26	16	LAUREL / OFFSITE	3	2538	16	16	WHITE OAK	3	2518	12		OFFSITE	3	2534	OFFSITE	32	2567	OFFSITE	
4	2582	16		LAUREL	4	2543	18	18	LAUREL	4	2519	12		OFFSITE	4	2544	14	14	33	2568	OFFSITE
5	2595	8		LAUREL	5	2559	12		LAUREL	5	2520	13		OFFSITE	5	2548	20	20	34	2570	REMOVE
6	2571	8		LAUREL	6	2571	8		LAUREL	6	2521	12		OFFSITE	6	2549	20	20	35	2575	REMOVE
7	2572	8		LAUREL	7	2572	8		LAUREL	7	2522	20		OFFSITE	7	2584	13		36	2577	REMOVE
8	2573	14	14	LAUREL	8	2573	14	14	LAUREL	8	2586	14	14		8	2535	REMOVE	37	2579	REMOVE	
9	2574	14	14	LAUREL	9	2574	14	14	LAUREL	9	2587	14	14		9	2537	REMOVE	38	2583	REMOVE	
10	2576	12		LAUREL	10	2576	12		LAUREL	10	2588	10			10	2539	REMOVE	39	2585	REMOVE	
11	2578	7		LAUREL	11	2578	7		LAUREL	11	2589	13			11	2540	REMOVE	40	2594	REMOVE	
12	2581	12		LAUREL	12	2581	12		LAUREL	12	2597	14	14		12	2541	REMOVE				
13	2590	14	14	LAUREL	13	2590	14	14	LAUREL	13	2598	14	14		13	2542	REMOVE				
14	2591	20	20	LAUREL	14	2591	20	20	LAUREL	14	2545				14	2545	REMOVE				
15	2592	10		LAUREL	15	2592	10		LAUREL	15	2546				15	2546	REMOVE				
16	2593	24	24	LAUREL	16	2593	24	24	LAUREL	16	2550				16	2550	REMOVE				
17					17	2551				17	2551				17	2551	REMOVE				
18					18	2552				18	2552				18	2552	REMOVE				
19					19	2553				19	2553				19	2553	REMOVE				
20					20	2554				20	2554				20	2554	REMOVE				
21					21	2555				21	2555				21	2555	REMOVE				
22					22	2556				22	2556				22	2556	REMOVE				
23					23	2557				23	2557				23	2557	REMOVE				
24					24	2558				24	2558				24	2558	REMOVE				
25					25	2560				25	2560				25	2560	REMOVE				
26					26	2561				26	2561				26	2561	REMOVE				
27					27	2562				27	2562				27	2562	REMOVE				
28					28	2563				28	2563				28	2563	REMOVE				
29					29	2564				29	2564				29	2564	REMOVE				

TREE COUNT (MITIGATION)				SITE TREE SUMMARY			
16	(OAKS TO BE PRESERVED)	0	(PINES TO BE PRESERVED)	TOTAL # TREES	TOTAL SIZE (INCHES)	PRESERVATION CREDIT	REQUIRED MITIGATION
- 140	(OAKS TO BE REMOVED)			3	31	16	140
- 154	(PINES TO BE REMOVED)			16	215		
- 278	MITIGATION (CREDITS)			0	0	0	154
				35			
				1			
TOTAL # OF TREES FOR THIS PROJECT: 68							

TREE NOTES:

- PALM TREES HAVE A CLEAR TRUNK HEIGHT OF 10' OR GREATER.
- OAK & PINE TREES ARE MEASURED @ (DBH) 4" ABOVE GRADE, 14" OR GREATER.
- CONTRACTOR IS TO REFER TO LANDSCAPE PLANS.



811 It's fast. It's free. It's the law.

Know what's below.
Call before you dig.
www.callsunshine.com