

CONSTRUCTION DOCUMENTS

JAYCEE PARK DOCK AND BOAT RAMP

FORT PIERCE, FLORIDA

March 16, 2023



TABLE OF CONTENTS

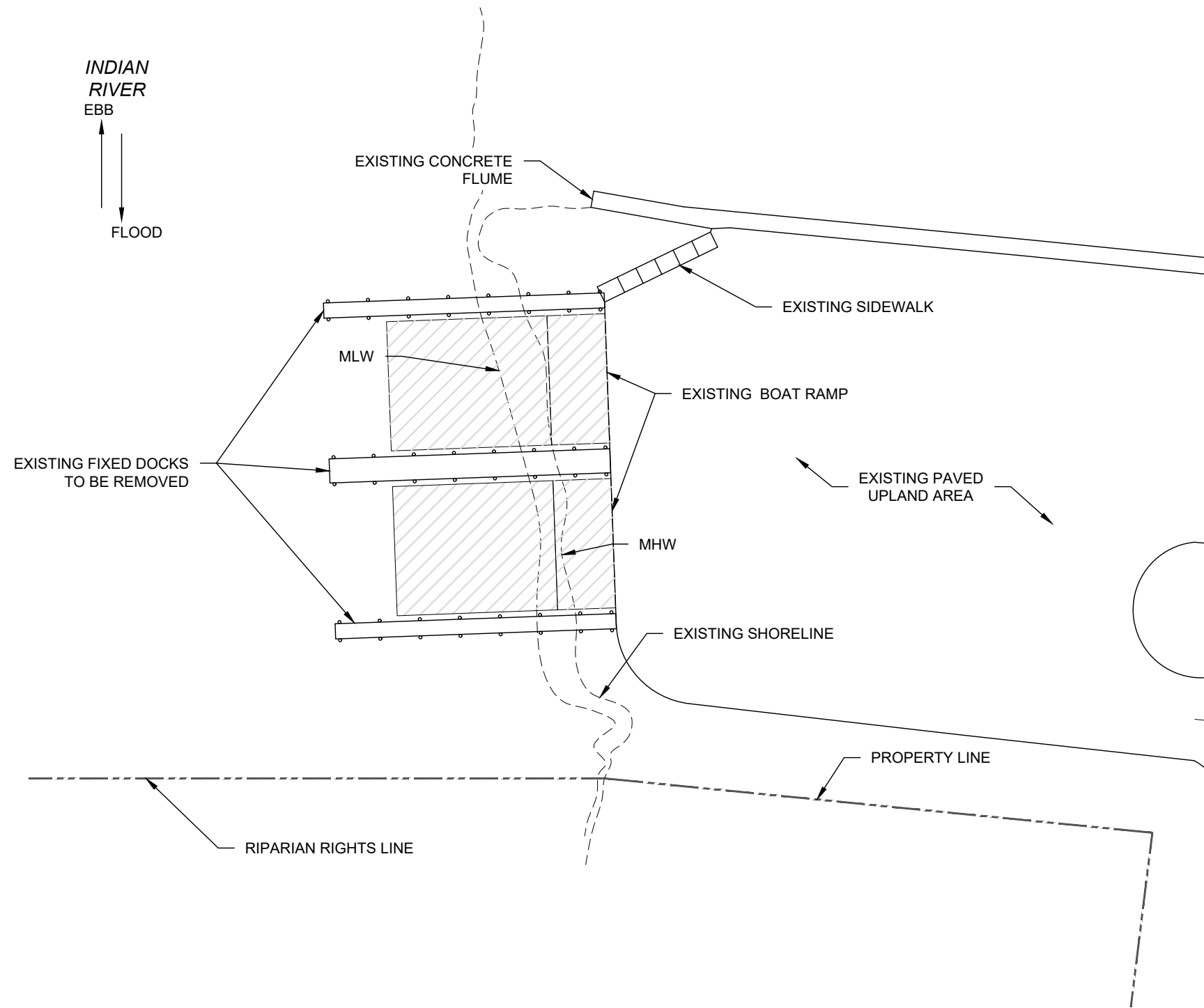
SHEET	DRAWING TITLE
1	EXISTING CONDITIONS AND NOTES
2	PROPOSED DOCK LAYOUT PLAN
3	DOCK CROSS SECTIONS AND DETAILS
4	ABUTMENT CROSS SECTIONS AND DETAILS

PREPARED FOR:
CITY OF FORT PIERCE
1415 S OCEAN DR
FORT PIERCE, FLORIDA 34949

PREPARED BY:



618 US HIGHWAY 1
SUITE 106
N PALM BEACH, FL 33408
561-315-3318
www.bmainc.co



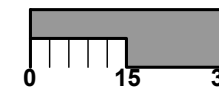
EXISTING CONDITIONS
SCALE: 1" = 30'

GENERAL NOTES:

1. PROPERTY LINES AND LAYOUT FEATURES SHOWN IN THESE PLANS ARE BASED ON INFORMATION TAKEN FROM SURVEY PERFORMED BY CITY OF FORT PIERCE DEPARTMENT OF ENGINEERING., DATED APRIL 13, 1975.
2. ELEVATIONS SHOWN ON UPLAND ARE REFERENCED TO NAVD88.
3. SCOPE OF WORK INCLUDES INSTALLATION OF CONCRETE ABUTMENTS, GANGWAYS, AND COURTESY FLOATING DOCKS AT EXISTING PUBLIC BOAT RAMP.
4. ALL DEBRIS SHALL BE DISPOSED OF AT AN OFFSITE DISPOSAL SITE. ANY DEBRIS FALLING INTO THE WATER SHALL BE RETRIEVED AND DISPOSED OF OFFSITE.
5. ANY IMPACTED AREAS SHALL BE RETURNED TO A ROUGH-GRADED AND BETTER-THAN-ORIGINAL CONDITION. CONTRACTOR SHALL THOROUGHLY FAMILIARIZE HIMSELF WITH EXISTING AND PROPOSED CONDITIONS PRIOR TO COMMENCEMENT OF WORK.
6. SEE SHEET 1 FOR EXISTING CONDITIONS AND NOTES; SHEET 2 FOR PROPOSED DOCK LAYOUT PLAN; SHEET 3 FOR DOCK CROSS SECTIONS AND DETAILS; AND SHEET 4 FOR ABUTMENT CROSS SECTIONS AND DETAILS.
7. ALL INFORMATION CONTAINED IN THESE PLANS SHALL BE FIELD CONFIRMED AS NECESSARY BY CONTRACTOR PRIOR TO AND DURING ALL CONSTRUCTION ACTIVITIES. ANY DISCREPANCIES WHICH MAY MATERIALLY ALTER THE DESIGN AND/OR CONSTRUCTION SCOPE SHALL BE BROUGHT TO THE IMMEDIATE ATTENTION OF THE ENGINEER.
8. ANY MODIFICATIONS TO THESE PLANS SHALL BE REVIEWED AND APPROVED BY THE ENGINEER PRIOR TO EXECUTION.
9. THIS PROJECT IS PENDING APPROVAL THROUGH A PERMIT EXEMPTION FROM THE FLORIDA DEPARTMENT OF ENVIRONMENTAL PROTECTION AND A STATE PROGRAMMATIC GENERAL PERMIT FROM THE US ARMY CORPS OF ENGINEERS. CONTRACTOR SHALL ADHERE TO ALL CONDITIONS OF REGULATORY APPROVALS.



NORTH



SCALE: 1" = 30'

Revisions	Drawn by: BSM	Checked by: MDB	Date: 3/16/2023	Sheet No. 1
-----------	---------------	-----------------	-----------------	-------------

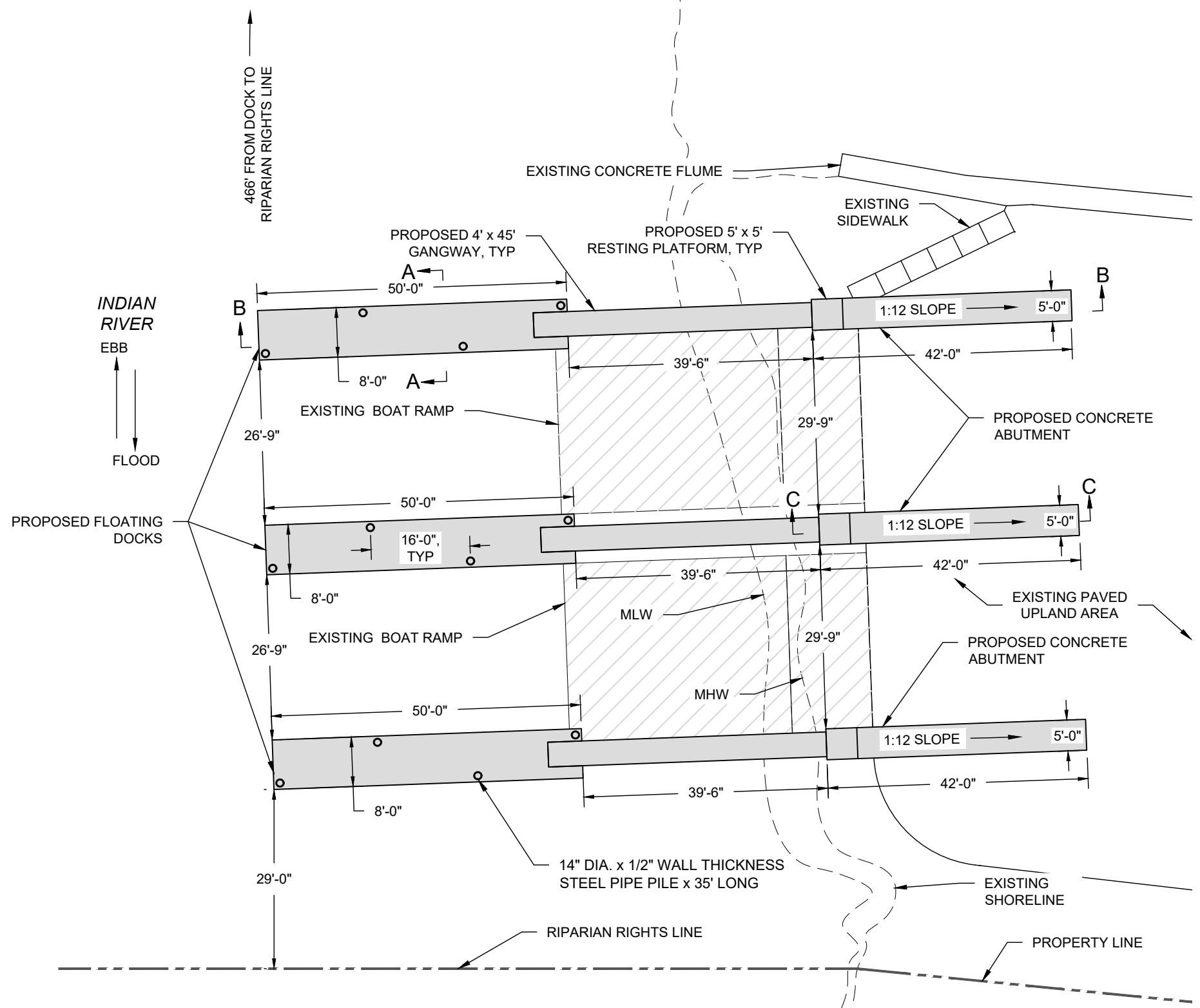
EXISTING CONDITIONS AND NOTES
JAYCEE PARK DOCK AND BOAT RAMP

For: 1415 S OCEAN DR
FORT PIERCE, FLORIDA 34949

22175



618 US HIGHWAY 1
SUITE 106
N PALM BEACH, FL 33408
561-315-3318
www.bmainc.co



PROPOSED DOCK LAYOUT PLAN
SCALE: 1" = 20'

FLOATING DOCK CONSTRUCTION NOTES:

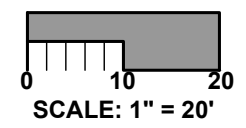
1. GENERAL SPECIFICATIONS: FLORIDA DEPARTMENT OF TRANSPORTATION STANDARD SPECIFICATIONS FOR ROAD AND BRIDGE CONSTRUCTION 2019.
2. DESIGN SPECIFICATION: FLORIDA BUILDING CODE 2020; ACI 318-05 BUILDING CODE REQUIREMENT FOR STRUCTURAL CONCRETE.
3. DESIGN LOADING: LIVE LOAD = 50 PSF
WIND LOAD 170 MPH (ULTIMATE), 3 SECOND GUSTS
132 MPH (SERVICE), 3 SECOND GUSTS
4. GANGWAYS TO BE MARINE GRADE ALUMINUM FRAMES. DOCK MANUFACTURER SHALL SUBMIT GANGWAY AND GANGWAY CONNECTION SHOP DRAWINGS FOR ENGINEER'S APPROVAL PRIOR TO FABRICATION.
5. FLOATING DOCK TO BE CONCRETE DOCKS. DOCK MANUFACTURER SHALL SUBMIT DOCK AND GANGWAY CONNECTION SHOP DRAWINGS FOR ENGINEER'S APPROVAL PRIOR TO FABRICATION.
6. FLOATING DOCK PILING SHALL BE ROUND STEEL PIPE PILES, MINIMUM 14" DIAMETER x 1/2" THICKNESS, 35 FEET LONG.
7. FINAL PILE SIZE AND QUANTITY TO BE DETERMINED BY DOCK MANUFACTURER FOR FLOATING SYSTEMS.
8. SEE WIND WAVE STUDY FOR ENVIRONMENTAL CONDITIONS.

CONCRETE CONSTRUCTION NOTES:

1. GENERAL SPECIFICATIONS: FLORIDA DEPARTMENT OF TRANSPORTATION STANDARD SPECIFICATIONS FOR ROAD AND BRIDGE CONSTRUCTION 2019.
2. DESIGN SPECIFICATION: FLORIDA BUILDING CODE 2020; ACI 318-05 BUILDING CODE REQUIREMENT FOR STRUCTURAL CONCRETE.
2. DESIGN LOADING: LIVE LOAD = 100 psf
WIND LOAD 170 mph (ULTIMATE), 3 SECOND GUSTS
132 mph (SERVICE), 3 SECOND GUSTS
3. MATERIAL STRESSES: ALL MATERIAL PROPERTIES ARE IN ACCORDANCE WITH CURRENT AASHTO SPECIFICATIONS FOR THE MATERIALS SHOWN IN THE PLANS.
ENVIRONMENT - EXTREMELY AGGRESSIVE
CONCRETE: MINIMUM 28-DAY STRENGTH:
PRESTRESSED: CLASS IV CONCRETE (F'C = 6000 PSI)
CAST-IN-PLACE: CLASS IV CONCRETE (F'C = 5000 PSI)
WATER/CEMENT RATIO MAX .40; CIP CONCRETE SLUMP 3" TO 5"
4. CONCRETE:
 - a. PROVIDE 3/4 INCH CHAMFERS ON ALL EXPOSED EDGES AND CORNERS EXCEPT AS OTHERWISE NOTED.
 - b. PROVIDE A LIGHT BROOM FINISH ON TOP SURFACE OF SEAWALL CAP.
5. REINFORCEMENT:
 - a. REINFORCEMENT SHALL BE ASTM A-615, GRADE 60, TYPICAL UNLESS NOTED OTHERWISE (U.N.O.).
 - b. ALL DIMENSIONS PERTAINING TO LOCATION OF REINFORCING ARE TO CENTERLINE OF BARS EXCEPT WHERE THE CLEAR DIMENSION IS SHOWN TO THE FACE OF CONCRETE.
 - c. REINFORCING IN CONCRETE SHALL BE CONTINUOUS-LAP BARS 36 DIAMETERS. HORIZONTAL BAR LAPS SHALL BE STAGGERED.
 - d. REINFORCEMENT SHALL BE CAREFULLY PLACED, RIGIDLY SUPPORTED, AND WELL-TIED WITH BAR SUPPORTS AND SPACERS.



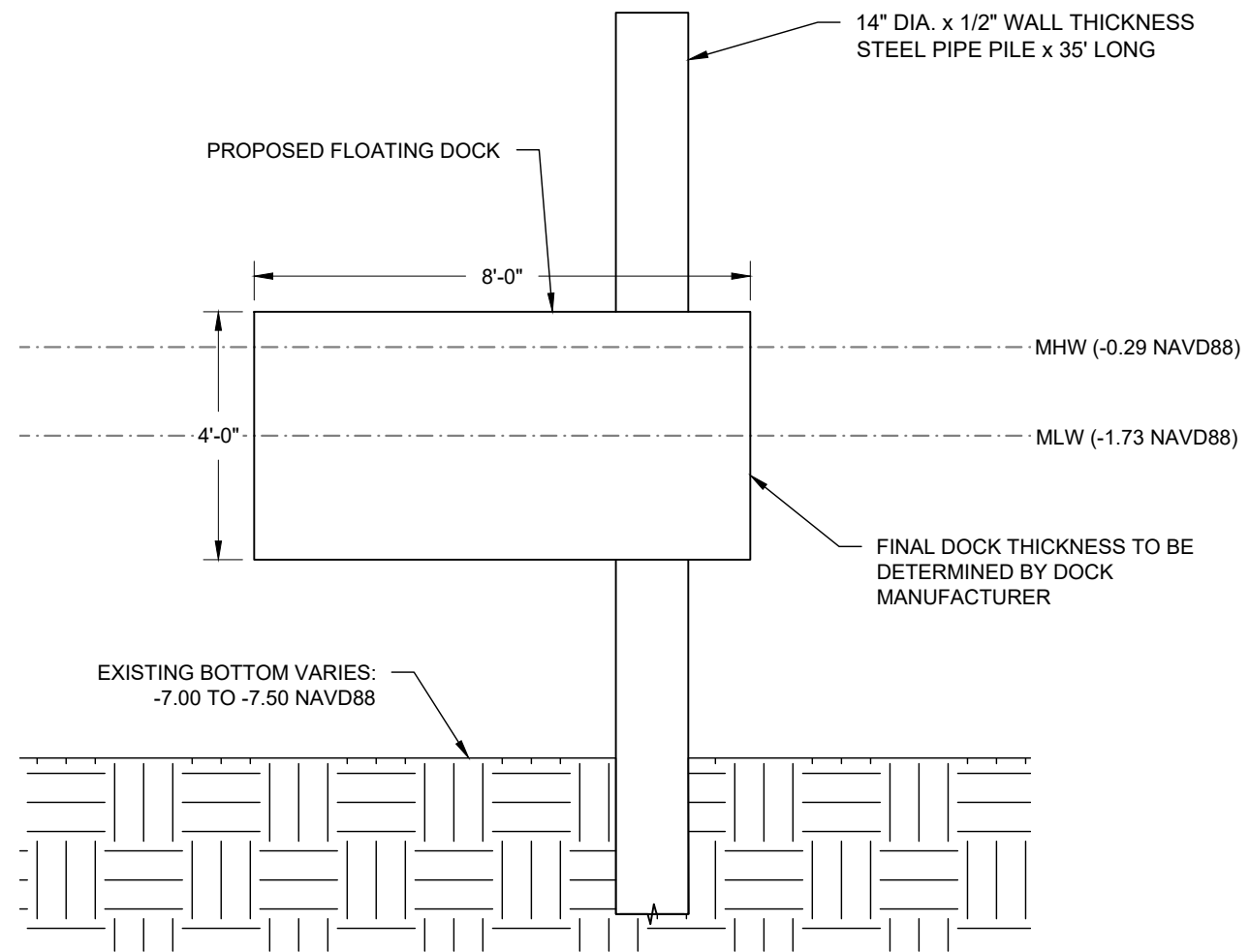
NORTH



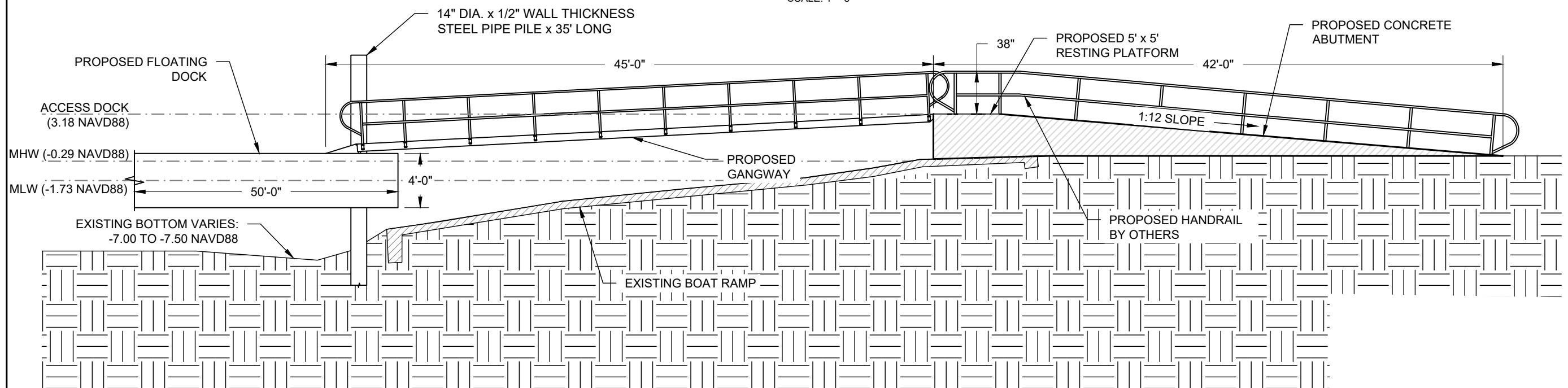
Revisions	Drawn by: BSM	Checked by: MDB	Date: 3/16/2023	Sheet No. 2
PROPOSED DOCK LAYOUT PLAN JAYCEE PARK DOCK AND BOAT RAMP For: 1415 S OCEAN DR FORT PIERCE, FLORIDA 34949				
22175				



618 US HIGHWAY 1
SUITE 106
N PALM BEACH, FL 33408
561-315-3318
www.bmainc.co



CROSS SECTION A-A
SCALE: 1" = 3'

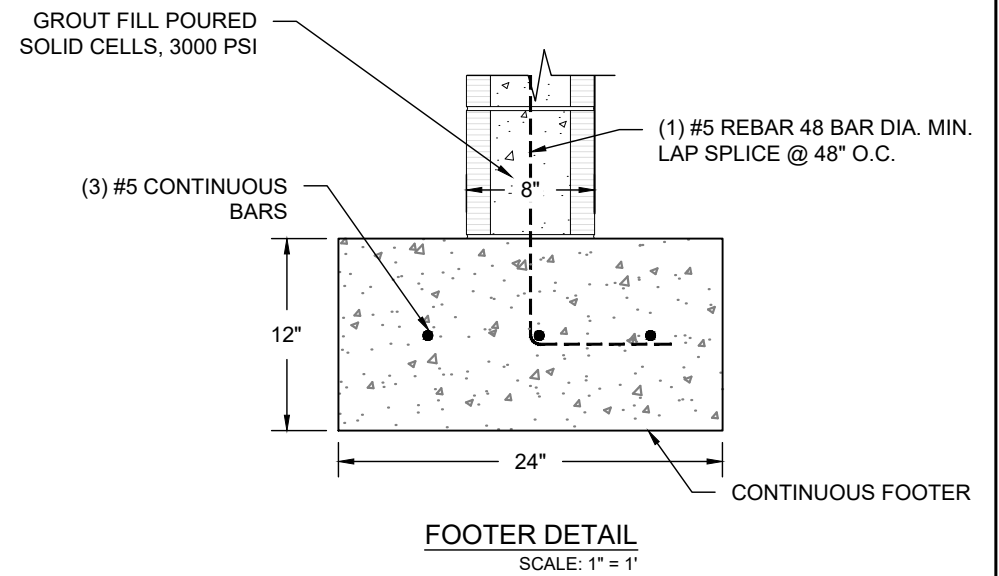
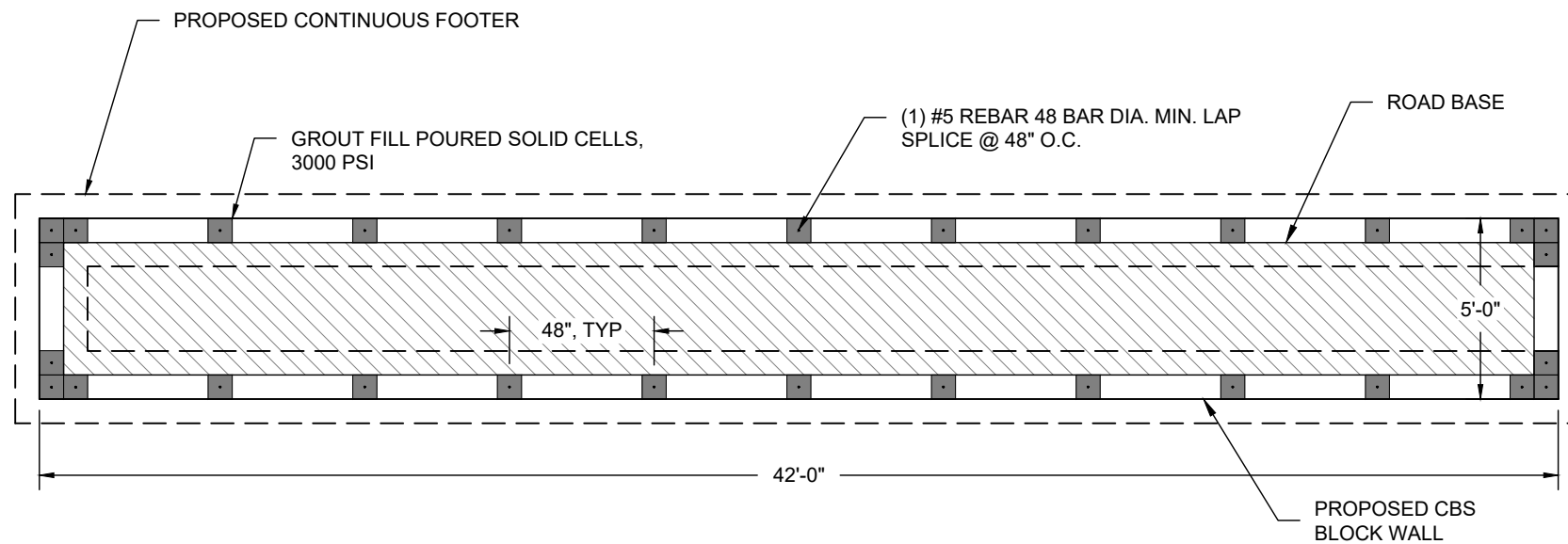
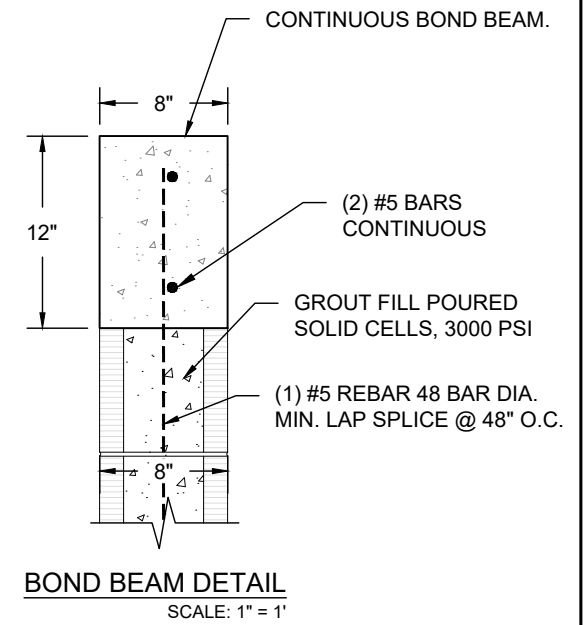
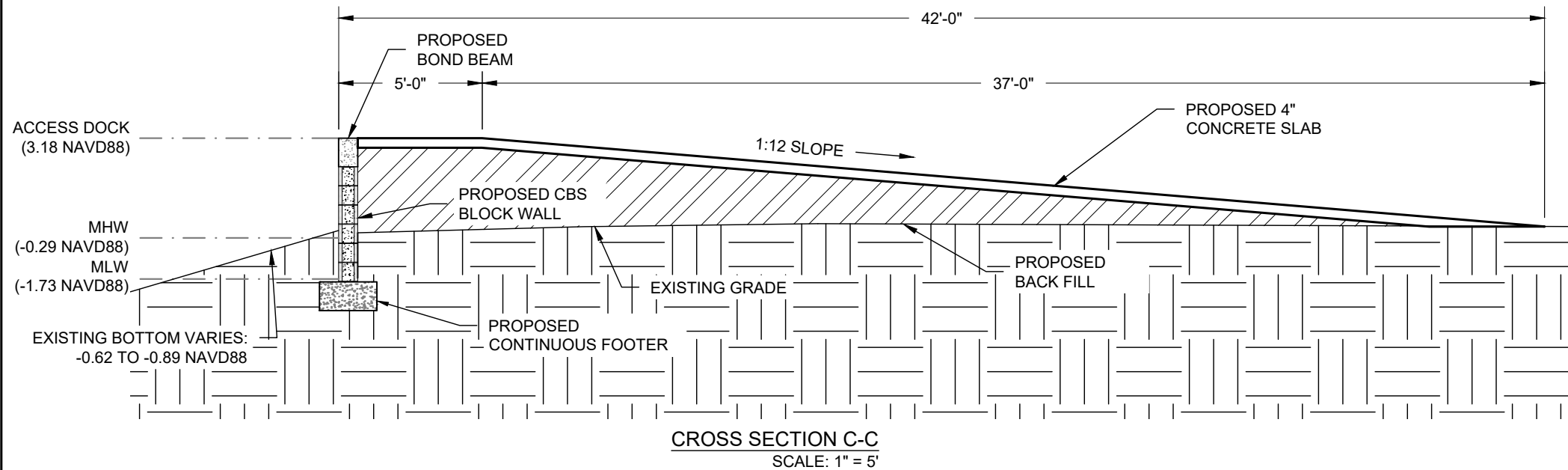


CROSS SECTION B-B
SCALE: 1" = 8'

Revisions	Drawn by:	BSM
	Checked by:	MDB
	Date:	3/16/2023
		Sheet No. 3
DOCK CROSS SECTIONS AND DETAILS JAYCEE PARK DOCK AND BOAT RAMP For: 1415 S OCEAN DR FORT PIERCE, FLORIDA 34949		
22175		



618 US HIGHWAY 1
 SUITE 106
 N PALM BEACH, FL 33408
 561-315-3318
 www.bmainc.co



Drawn by:	BSM
Checked by:	MDB
Date:	3/16/2023
Sheet No.	4

Revisions	
-----------	--

ABUTMENT CROSS SECTIONS AND DETAILS
JAYCEE PARK DOCK AND BOAT RAMP
 For: 1415 S OCEAN DR
 FORT PIERCE, FLORIDA 34949
 22175



618 US HIGHWAY 1
 SUITE 106
 N PALM BEACH, FL 33408
 561-315-3318
 www.bmainc.co