

Census Climate Change Data

Tract information

- Number: 12111381402
- County: St. Lucie County
- State: Florida
- Population: 6,874

Tract demographics

Race / Ethnicity

White52%

Black or African American23%

American Indian and Alaska Native0%

Asian0%

Native Hawaiian or Pacific Islander2%

Other1%

Two or more races3%

Hispanic or Latino18%

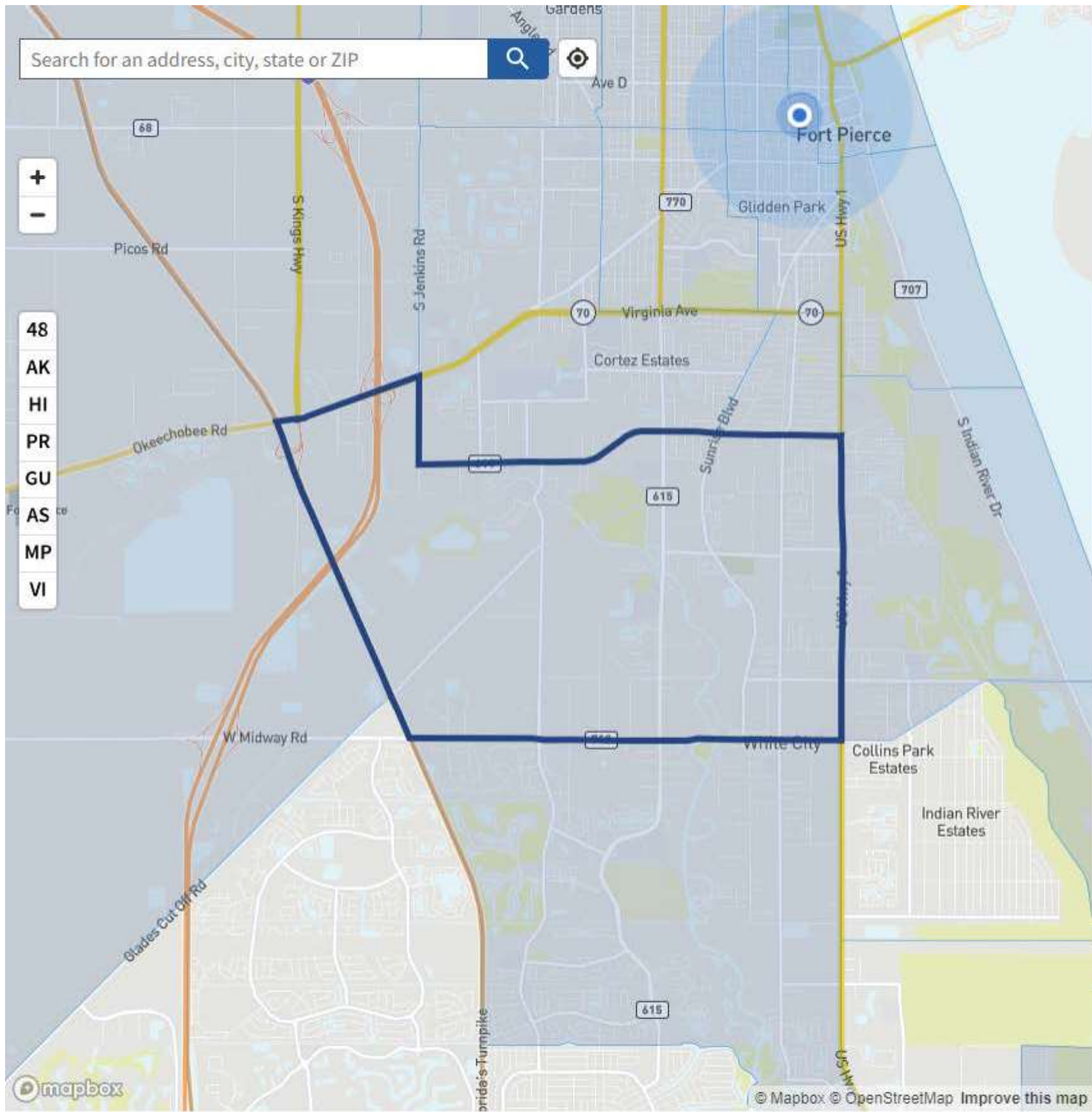
Age

Children under 1010%

Ages 10 - 6473%

Elderly over 6515%

Identified as disadvantaged? YES



Tract information
 Number: 12111381402
 County: St. Lucie County
 State: Florida
 Population: 6,874

Tract demographics

Race / Ethnicity [\(Hide ^\)](#)

White	52%
Black or African American	23%
American Indian and Alaska Native	0%
Asian	0%
Native Hawaiian or Pacific Islander	2%
Other	1%
Two or more races	3%
Hispanic or Latino	18%

Age [\(Hide ^\)](#)

Children under 10	10%
Ages 10 - 64	73%
Elderly over 65	15%

Identified as disadvantaged?

YES

This tract is considered disadvantaged because it meets more than 1 burden threshold **AND** the associated socioeconomic threshold.

[Send feedback](#)

Climate change +

Energy +

Health +

This tool has been updated. The 1.0 version of the tool was released on Nov 22, 2022.

Explore the map

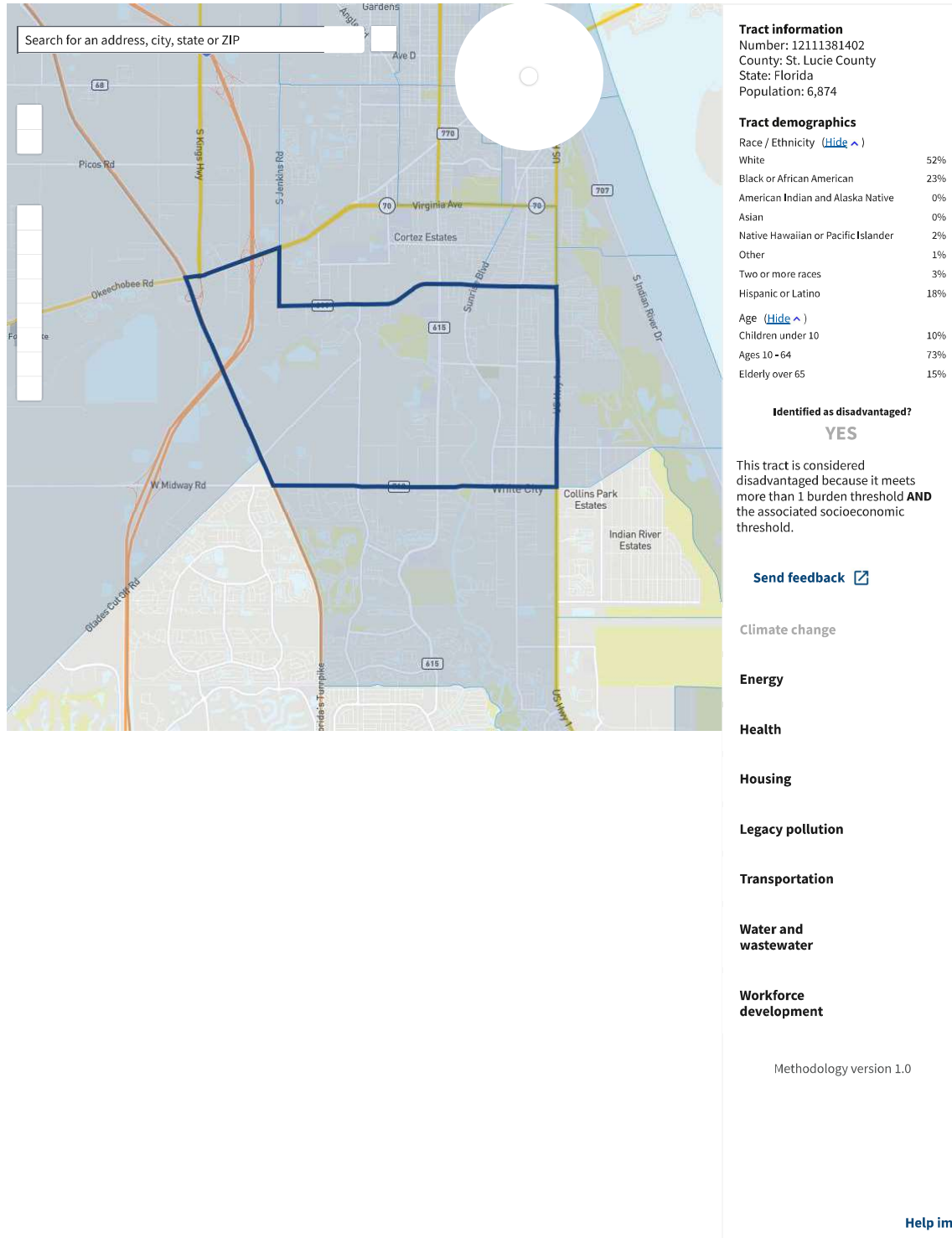
[Share data sources with CEQ](#)

Census tracts that are overburdened and underserved are highlighted as being disadvantaged on the map. Federally Recognized Tribes, including Alaska Native Villages, are also considered disadvantaged communities.

Zooming in and selecting shows information about each census tract.

Get the data

Download the data with documentation and shapefile from the [downloads](#) page.



Search for an address, city, state or ZIP

Tract information
Number: 12111381402
County: St. Lucie County
State: Florida
Population: 6,874

Tract demographics
Race / Ethnicity [\(Hide ^\)](#)


White	52%
Black or African American	23%
American Indian and Alaska Native	0%
Asian	0%
Native Hawaiian or Pacific Islander	2%
Other	1%
Two or more races	3%
Hispanic or Latino	18%

Age [\(Hide ^\)](#)

Children under 10	10%
Ages 10 - 64	73%
Elderly over 65	15%

Identified as disadvantaged?
YES

This tract is considered disadvantaged because it meets more than 1 burden threshold **AND** the associated socioeconomic threshold.

[Send feedback](#) 

Climate change

Energy

Health

Housing

Legacy pollution

Transportation

Water and wastewater

Workforce development

Methodology version 1.0

[Help improve the tool](#)



© Mapbox © OpenStreetMap

U.S. territories note

Not all the data used in the tool are available or used for all U.S. territories.

Puerto Rico: The data used for Puerto Rico are from all relevant and available fields in the energy, housing, legacy pollution, transportation, and workforce development categories. The following data are used: low income, projected flood risk, energy cost, lack of indoor plumbing, lead paint, housing cost, proximity to hazardous waste facilities, proximity to Superfund or National Priorities List (NPL) sites, proximity to Risk Management Plan (RMP) facilities, diesel particulate matter exposure, traffic proximity and volume, underground storage tanks and releases, wastewater discharge, low median income, poverty, unemployment, and high school education. Linguistic isolation was removed for Puerto Rico based on feedback received during the beta period.

American Samoa, Guam, the Northern Mariana Islands, and the U.S. Virgin Islands: For these U.S. territories, the tool uses the following data: unemployment, poverty, low median income, and high school education. These burdens are in the workforce development category.

A note on Tribal Nations

To respect Tribal sovereignty and self-government and to fulfill Federal trust and treaty responsibilities to Tribal Nations, land within the boundaries of Federally Recognized Tribes are designated as disadvantaged on the map. Alaska Native Villages are included as point locations that are smaller than a census tract. The boundaries of census tracts and the lands of Federally Recognized Tribes are different.

This decision was made after meaningful and robust consultation with Tribal Nations. This is consistent with CEQ's [Action Plan](#) for Consultation and Coordination with Tribal Nations, President Biden's [Memorandum](#) on Tribal Consultation and Strengthening Nation-to-Nation Consultation, and [Executive Order 13175](#) on Consultation and Coordination With Indian Tribal Governments.

Contact

Council on Environmental Quality
730 Jackson Pl NW
Washington, D.C. 20506
(202) 395-5750

[Sign up for updates](#)

More information

[Whitehouse.gov](#)
[Freedom of Information Act \(FOIA\)](#)
[Privacy Policy](#)
[Find a contact at USA.gov](#)

Want to contribute?

[Check out the code on GitHub](#)



Council on Environmental Quality

Census Energy Data

Energy cost

Average annual energy costs divided by household income

56th

not above 90th percentile

PM2.5 in the air

Level of inhalable particles, 2.5 micrometers or smaller

14th

not above 90th percentile

AND

Low income

People in households where income is less than or equal to twice the federal poverty level, not including students enrolled in higher ed

80th

above 65th percentile

Census Health Data

Asthma

Share of people who have been told they have asthma

43rd

not above 90th percentile

Diabetes

Share of people ages 18 years and older who have diabetes other than diabetes during pregnancy

68th

not above 90th percentile

Heart disease

Share of people ages 18 years and older who have been told they have heart disease

67th

not above 90th percentile

Low life expectancy

Average number of years a person can expect to live

85th

not above 90th percentile

AND

Low income

People in households where income is less than or equal to twice the federal poverty level, not including students enrolled in higher ed

Census Housing Data

Housing cost

Share of households making less than 80% of the area median family income and spending more than 30% of income on housing

88th

not above 90th percentile

Lack of green space

Amount of land, not including crop land, that is covered with artificial materials like concrete or pavement

26th

not above 90th percentile

Lack of indoor plumbing

Share of homes without indoor kitchens or plumbing

74th

not above 90th percentile

Lead paint

Share of homes that are likely to have lead paint

35th

not above 90th percentile

AND

Low income

People in households where income is less than or equal to twice the federal poverty level, not including students enrolled in higher ed

80th

above 65th percentile

Census Legacy Pollution Data

Abandoned mine land

Presence of one or more abandoned mine land within the tract

No

Formerly Used Defense Sites

Presence of one or more Formerly Used Defense Site within the tract

--

missing data

Proximity to hazardous waste facilities

Count of hazardous waste facilities within 5 kilometers

51st

not above 90th percentile

Proximity to Risk Management Plan facilities

Count of Risk Management Plan (RMP) facilities within 5 kilometers

63rd

not above 90th percentile

Proximity to Superfund sites

Count of proposed or listed Superfund (or National Priorities List (NPL)) sites within 5 kilometers

32nd

not above 90th percentile

AND

Low income

People in households where income is less than or equal to twice the federal poverty level, not including students enrolled in higher ed

80th

above 65th

Census Transportation Data

Diesel particulate matter exposure

Amount of diesel exhaust in the air

47th

not above 90th percentile

Transportation barriers

Average of relative cost and time spent on transportation

86th

not above 90th percentile

Traffic proximity and volume

Count of vehicles at major roads within 500 meters

57th

not above 90th percentile

AND

Low income

People in households where income is less than or equal to twice the federal poverty level, not including students enrolled in higher ed

80th

above 65th percentile

Census Water and Wastewater Data

Underground storage tanks and releases

Formula of the density of leaking underground storage tanks and number of all active underground storage tanks within 1500 feet of the census tract boundaries

82nd

not above 90th percentile

Wastewater discharge

Modeled toxic concentrations at parts of streams within 500 meters

--

missing data

AND

Low income

People in households where income is less than or equal to twice the federal poverty level, not including students enrolled in higher ed

80th

above 65th percentile

Census Workforce Development

Linguistic isolation

Share of households where no one over age 14 speaks English very well

78th

not above 90th percentile

Low median income

Comparison of median income in the tract to median incomes in the area

72nd

not above 90th percentile

Poverty

Share of people in households where income is at or below 100% of the Federal poverty level

75th

not above 90th percentile

Unemployment

Number of unemployed people as a part of the labor force

88th

not above 90th percentile

AND

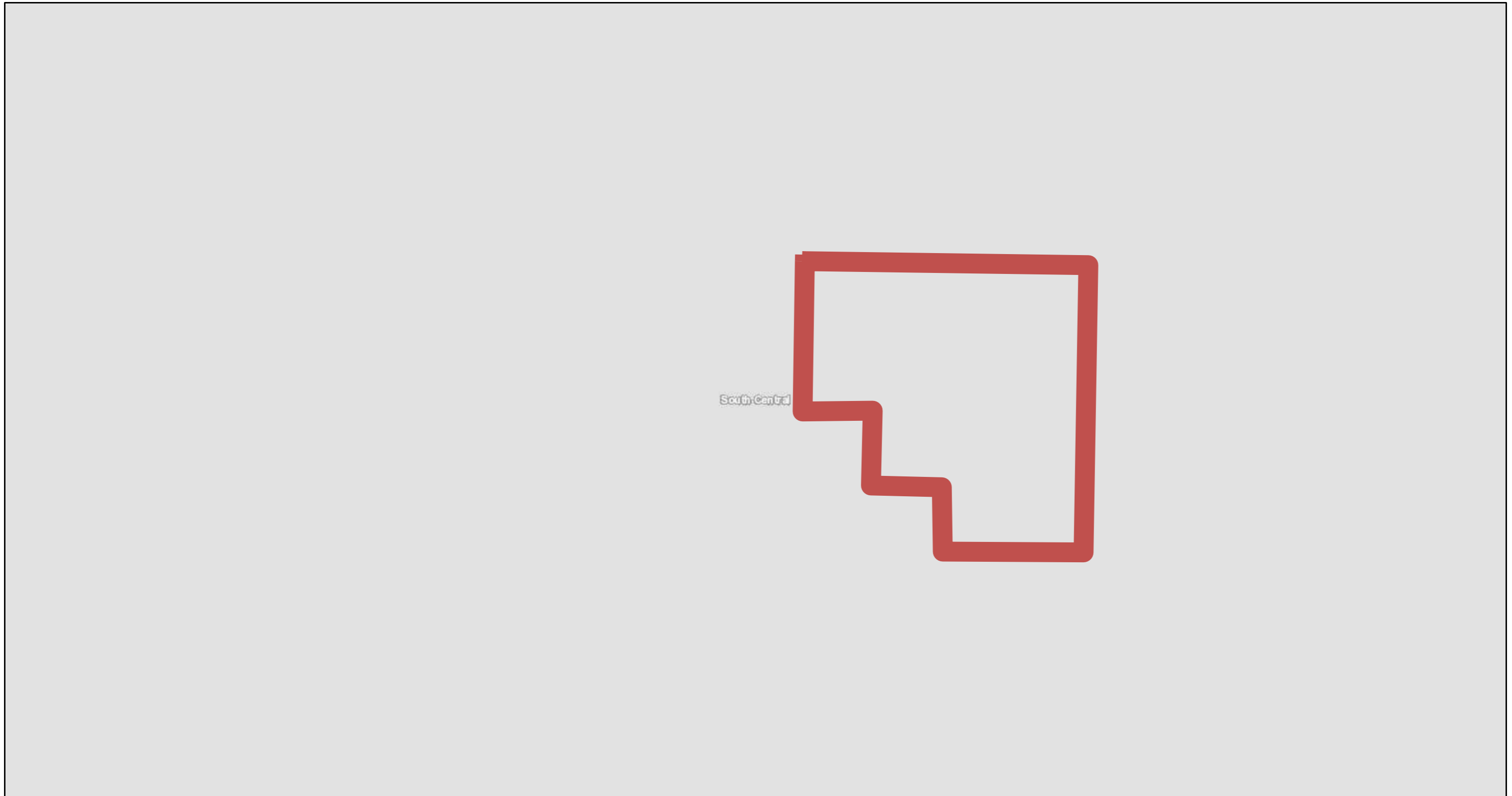
High school education

Percent of people ages 25 years or older whose high school education is less than a high school diploma

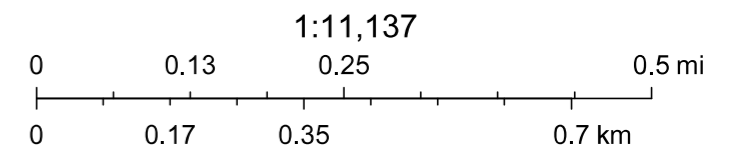
17%

above 10% percent

Selvitz PD Black Bear Calls Map



9/29/2023, 6:36:20 PM

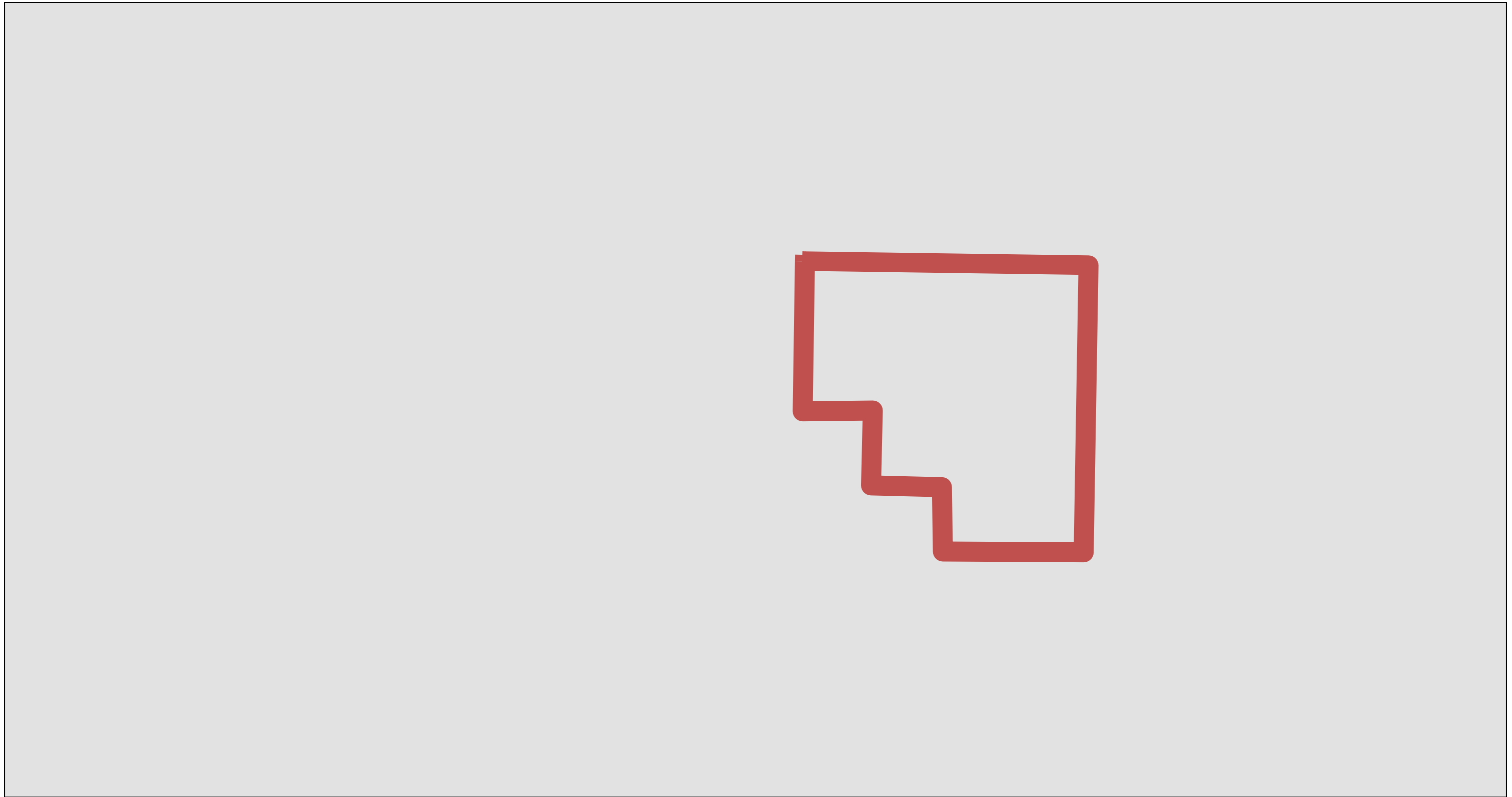


Florida Fish and Wildlife Conservation Commission-Fish and Wildlife Research Institute, SLC Property Appraiser's Office, Esri, HERE, Garmin, INCREMENT P, Intermap, USGS, METI/NASA, EPA, USDA

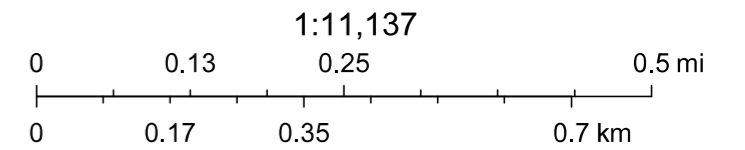
TRGIS User

Disclaimer: This graphical representation is provided for informational purposes and should not be considered authoritative for navigational, engineering, legal, and other uses.

Selvitz PD Black Bear Habitat & Range Map



9/29/2023, 6:38:52 PM

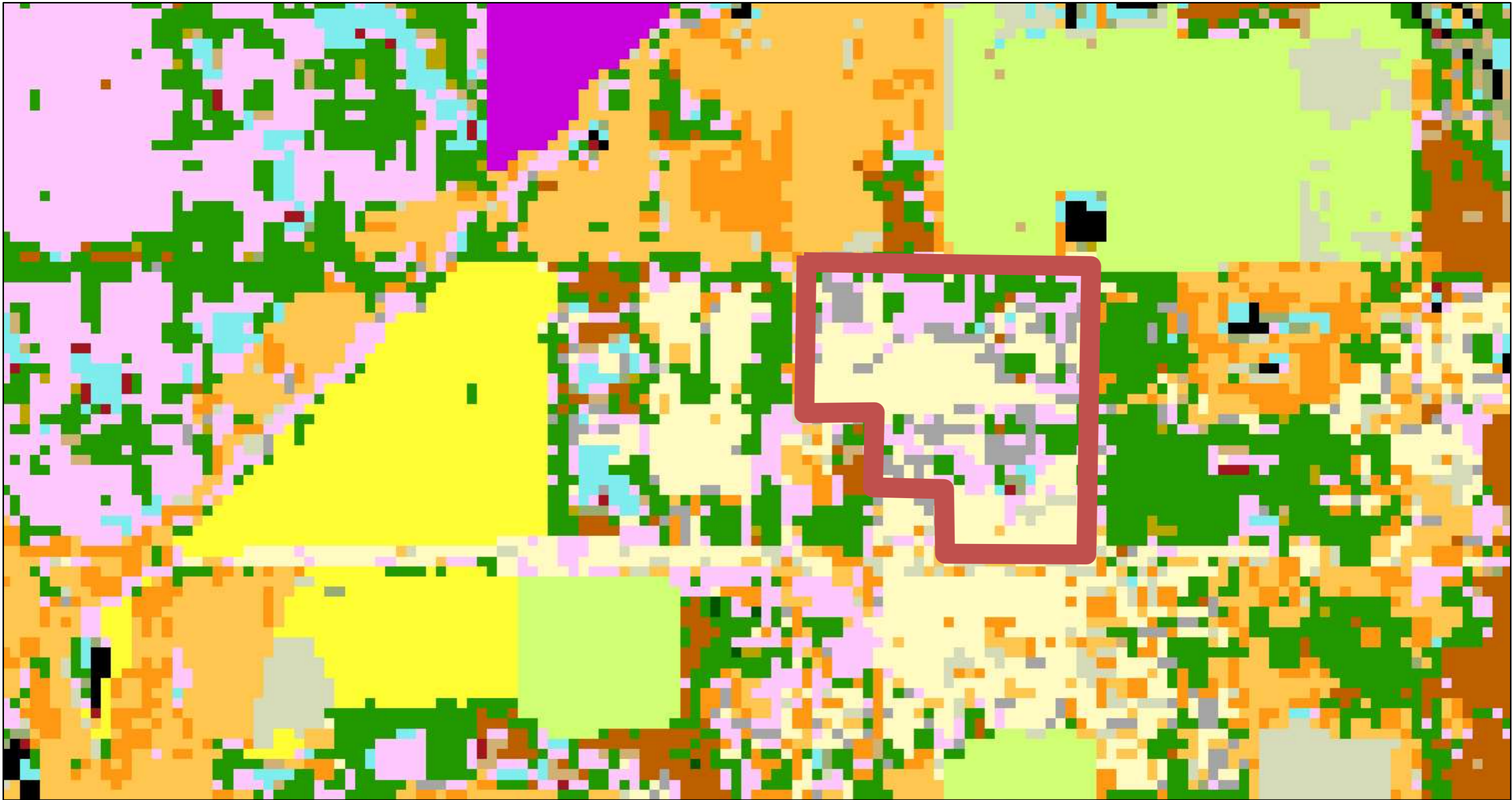


Florida Fish and Wildlife Conservation Commission-Fish and Wildlife Research Institute, SLC Property Appraiser's Office, Esri, HERE, Garmin, INCREMENT P, Intermap, USGS, METI/NASA, EPA, USDA

TRGIS User

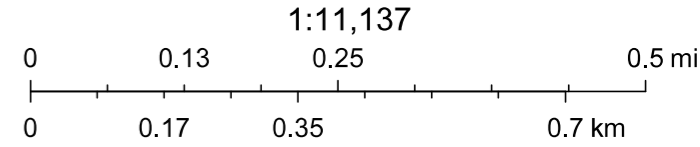
Disclaimer: This graphical representation is provided for informational purposes and should not be considered authoritative for navigational, engineering, legal, and other uses.

Selvitz PD Land Use & Land Cover Map



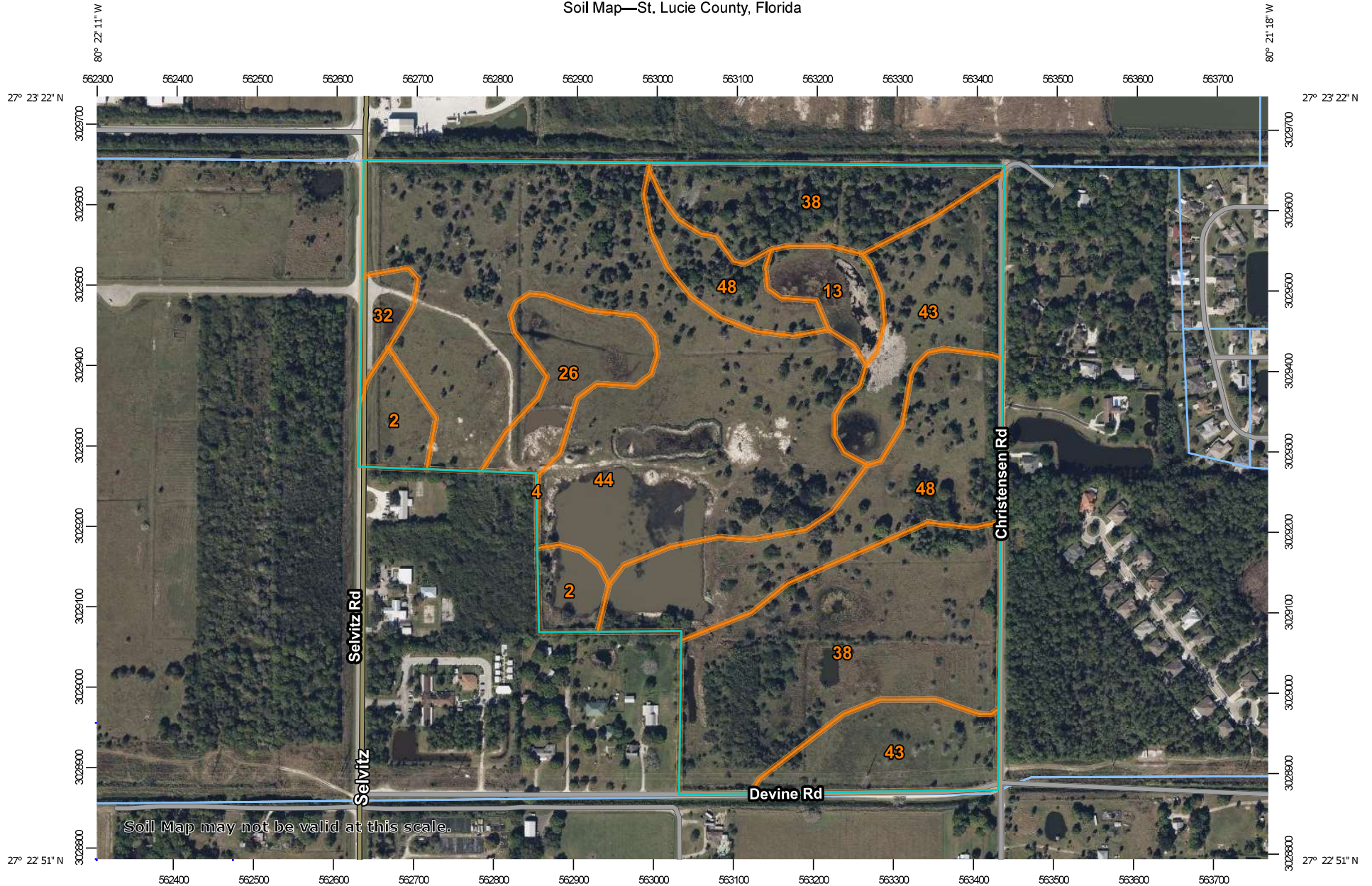
9/29/2023, 6:34:24 PM

- | | | | | | |
|--|----------------------------------|-------------------------------|----------------------------|----------------------|---------------------|
| Override 1 | Dry Prairie | Sawgrass Marsh | Hardwood Swamp | Open Water | Citrus |
| Vegetative Landcover Classification 2003 (grids) | Mixed Hardwood-pine Forest | Cattail Marsh | Hydric Hammock | Shrub and Brushland | Row and Field Crops |
| 0 | Hardwood Hammocks and Forests | Shrub Swamp | Bottomland Hardwood Forest | Grassland | Other Agriculture |
| Coastal Strand | Pinelands | Bay Swamp | Salt Marsh | Bare Soil / Clearcut | Exotic Plants |
| Sand / Beach | Cabbage Palm-live Oak-Hammock | Cypress Swamp | Mangrove Swamp | Improved Pasture | Australian Pine |
| Xeric Oak Scrub | Tropical Hardwood Hammock | Cypress / Pine / Cabbage Palm | Scrub Mangrove | Unimproved Pasture | Melaleuca |
| Sand Pine | Freshwater Marsh and Wet Prairie | Mixed Wetland Forest | Tidal Flats | Sugarcane | Brazilian Pepper |
| Sandhill | | | | | |



Florida Fish and Wildlife Conservation Commission-Fish and Wildlife Research Institute, SLC Property Appraiser's Office, Esri, HERE, Garmin, INCREMENT P, Intermap, USGS, METI/NASA, EPA, USDA

Soil Map—St. Lucie County, Florida



Map Scale: 1:6,700 if printed on A landscape (11" x 8.5") sheet.

0 50 100 200 300 Meters


0 300 600 1200 1800 Feet

Map projection: Web Mercator Corner coordinates: WGS84 Edge tics: UTM Zone 17N WGS84




MAP LEGEND

Area of Interest (AOI)

 Area of Interest (AOI)

Soils

 Soil Map Unit Polygons

 Soil Map Unit Lines

 Soil Map Unit Points

Special Point Features



Blowout



Borrow Pit



Clay Spot



Closed Depression



Gravel Pit



Gravelly Spot



Landfill



Lava Flow



Marsh or swamp



Mine or Quarry



Miscellaneous Water



Perennial Water



Rock Outcrop



Saline Spot



Sandy Spot



Severely Eroded Spot



Sinkhole



Slide or Slip



Sodic Spot



Spoil Area



Stony Spot



Very Stony Spot



Wet Spot



Other



Special Line Features

Water Features



Streams and Canals

Transportation



Rails



Interstate Highways



US Routes



Major Roads



Local Roads

Background



Aerial Photography

MAP INFORMATION

The soil surveys that comprise your AOI were mapped at 1:24,000.

Warning: Soil Map may not be valid at this scale.

Enlargement of maps beyond the scale of mapping can cause misunderstanding of the detail of mapping and accuracy of soil line placement. The maps do not show the small areas of contrasting soils that could have been shown at a more detailed scale.

Please rely on the bar scale on each map sheet for map measurements.

Source of Map: Natural Resources Conservation Service

Web Soil Survey URL:

Coordinate System: Web Mercator (EPSG:3857)

Maps from the Web Soil Survey are based on the Web Mercator projection, which preserves direction and shape but distorts distance and area. A projection that preserves area, such as the Albers equal-area conic projection, should be used if more accurate calculations of distance or area are required.

This product is generated from the USDA-NRCS certified data as of the version date(s) listed below.

Soil Survey Area: St. Lucie County, Florida

Survey Area Data: Version 16, Sep 2, 2022

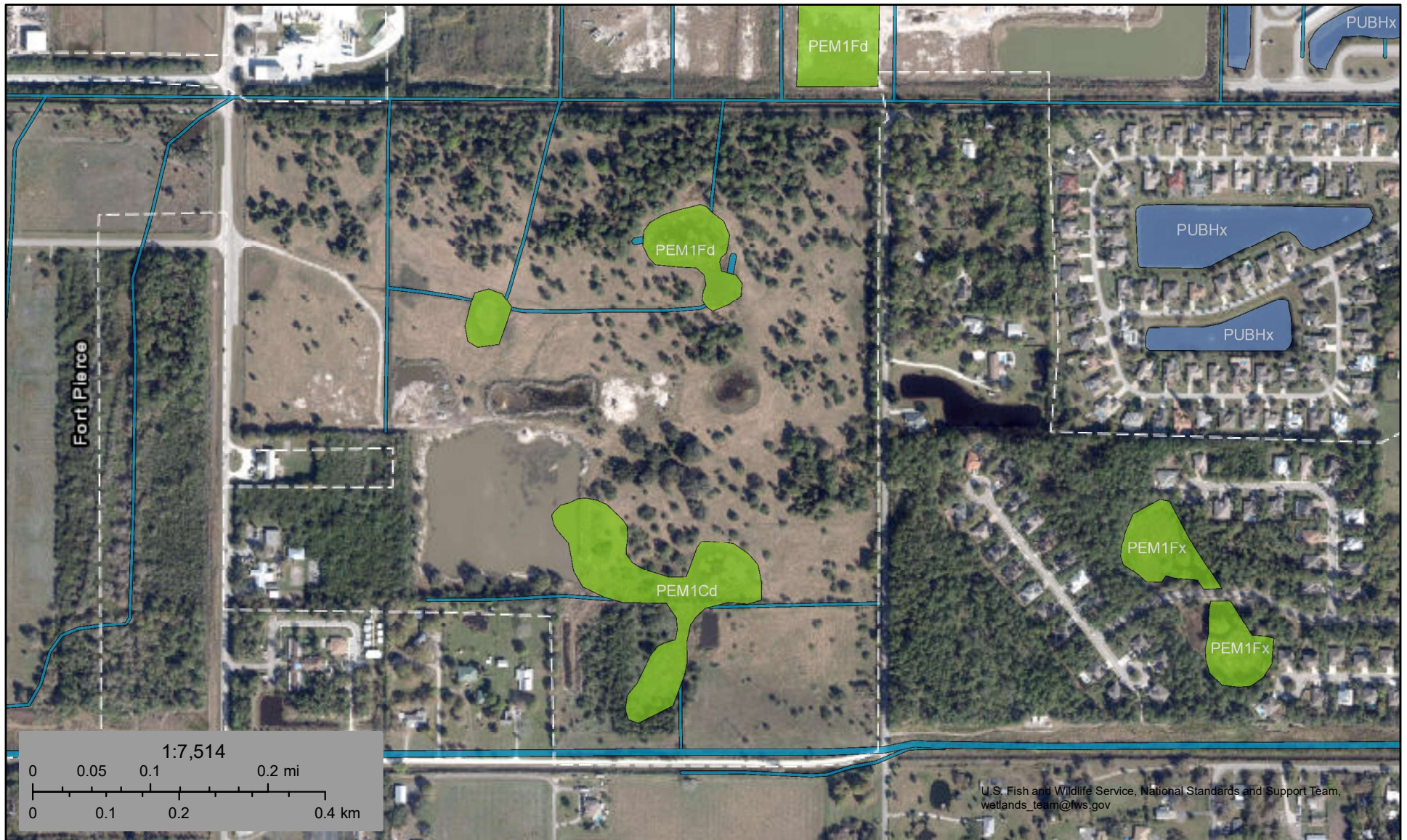
Soil map units are labeled (as space allows) for map scales 1:50,000 or larger.

Date(s) aerial images were photographed: Jan 18, 2022—Jan 30, 2022

The orthophoto or other base map on which the soil lines were compiled and digitized probably differs from the background imagery displayed on these maps. As a result, some minor shifting of map unit boundaries may be evident.

Map Unit Legend

Map Unit Symbol	Map Unit Name	Acres in AOI	Percent of AOI
2	Ankona and Farnton sands	4.6	3.7%
4	Arents, 0 to 5 percent slopes	0.0	0.0%
13	Floridana sand, frequently ponded, 0 to 2 percent slopes	3.1	2.5%
26	Oldsmar sand, depressionnal	5.7	4.6%
32	Pineda sand, 0 to 2 percent slopes	1.6	1.3%
38	Riviera fine sand, 0 to 2 percent slopes	29.9	24.0%
43	Susanna and Wauchula sands	15.8	12.7%
44	Tantile and Pomona sands	45.2	36.3%
48	Wabasso sand, 0 to 2 percent slopes	18.6	15.0%
Totals for Area of Interest		124.6	100.0%



September 29, 2023

Wetlands

- | | | | | | |
|---|--------------------------------|---|-----------------------------------|---|----------|
|  | Estuarine and Marine Deepwater |  | Freshwater Emergent Wetland |  | Lake |
|  | Estuarine and Marine Wetland |  | Freshwater Forested/Shrub Wetland |  | Other |
| | |  | Freshwater Pond |  | Riverine |

This map is for general reference only. The US Fish and Wildlife Service is not responsible for the accuracy or currentness of the base data shown on this map. All wetlands related data should be used in accordance with the layer metadata found on the Wetlands Mapper web site.