



# CITY OF FORT PIERCE

## City Commission

October 16<sup>th</sup>, 2023

### Jules Annexation

Parcel IDs: 2417-331-0003-000-4, 2417-331-0005-000-8 and 2417-331-0004-000-1

## **APPLICANT**

Daniel and Janica Jules

## **PROPERTY OWNER(S)**

Daniel and Janica Jules

## **PARCEL ID #(S):**

2417-331-0003-000-4, 2417-331-0005-000-8 and 2417-331-0004-000-1

PARCEL IDs: 2417-331-0003-000-4, 2417-331-0005-000-8 and 2417-331-0004-000-1 – ANNEXATION



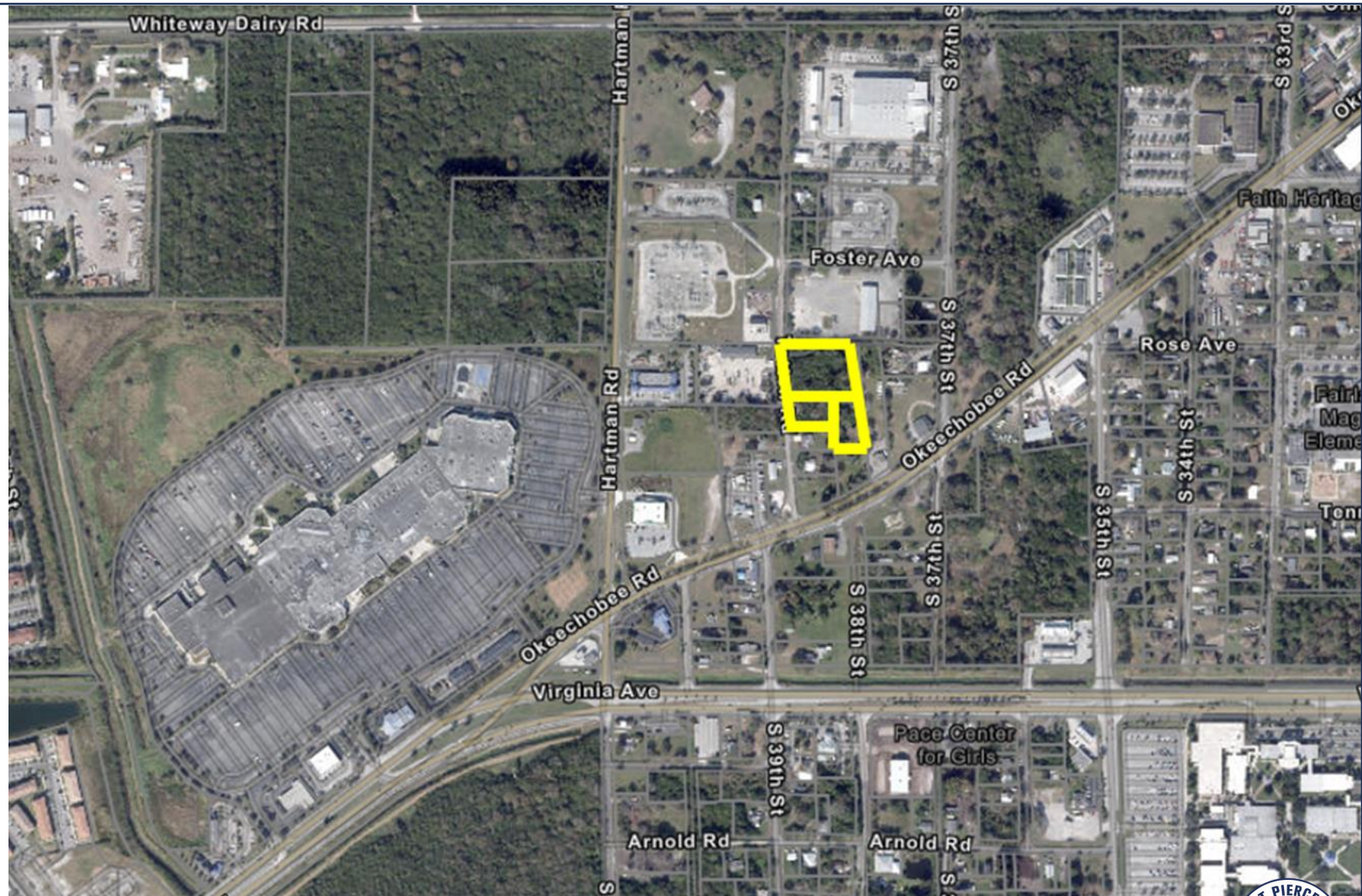
## SUMMARY

Request for review of an application for an annexation of three (3) parcels into the city, with a City Future Land Use of GC, General Commercial, and a City Zoning of C-3, General Commercial.

PARCEL IDs: 2417-331-0003-000-4, 2417-331-0005-000-8 and 2417-331-0004-000-1 – ANNEXATION



# SITE LOCATION



SITE AREA= 2.44 +/- Acres

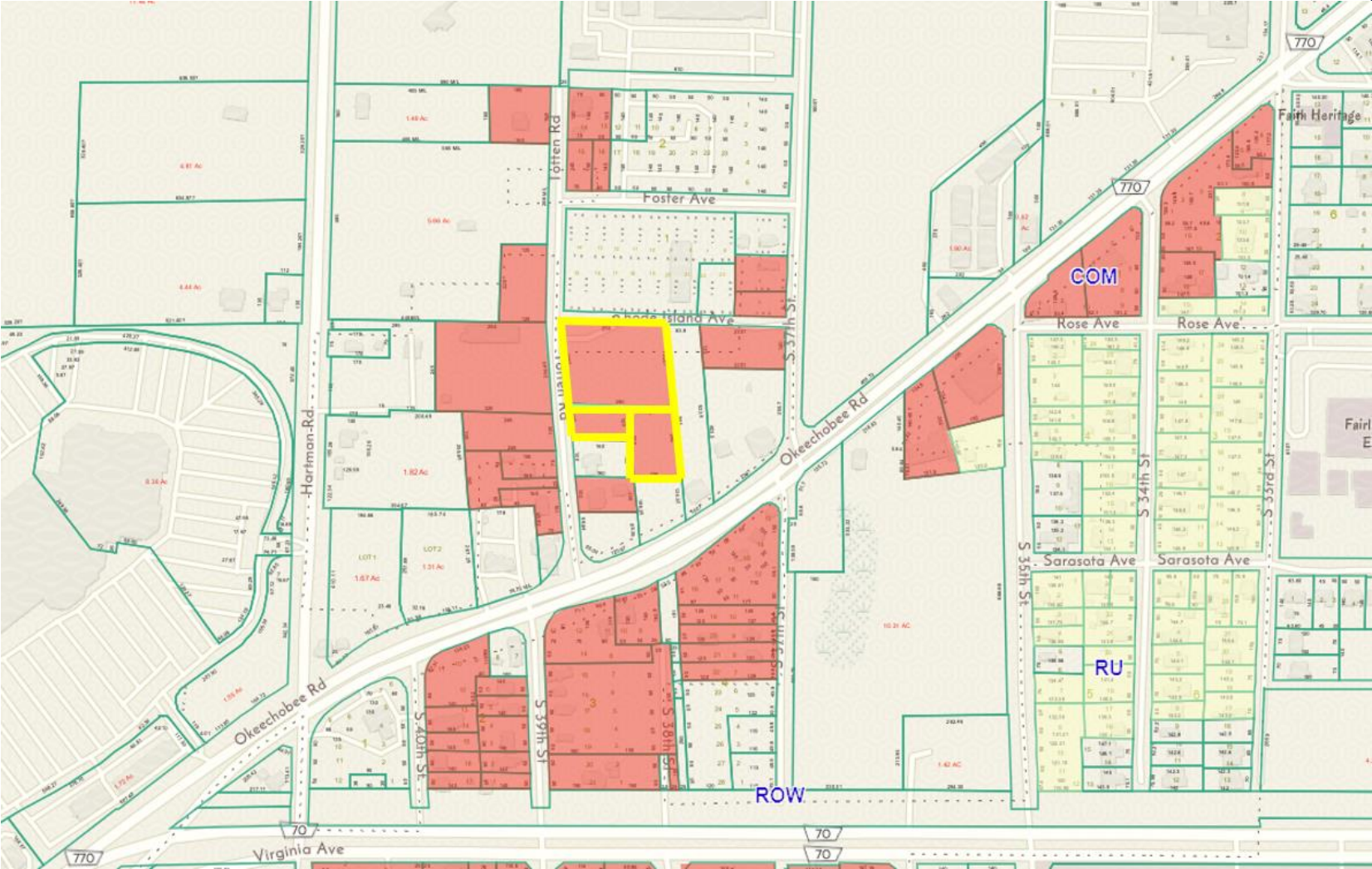
PARCEL IDs: 2417-331-0003-000-4, 2417-331-0005-000-8 and 2417-331-0004-000-1 – ANNEXATION



# EXISTING/PROPOSED FUTURE LAND USE

Current FLU: COM (Commercial – St. Lucie County)

Proposed FLU: GC (General Commercial – City of Fort Pierce)



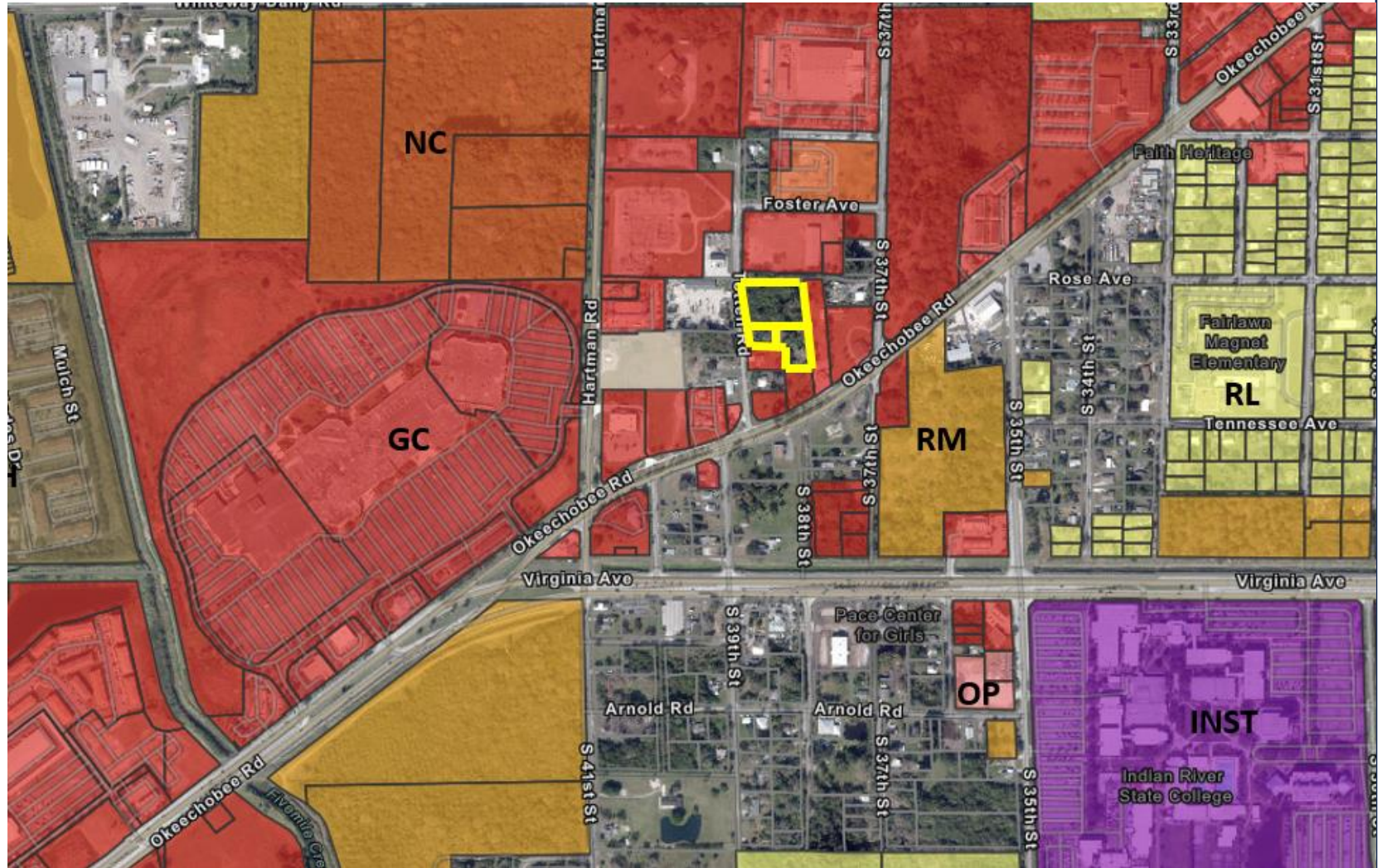
PARCEL IDs: 2417-331-0003-000-4, 2417-331-0005-000-8 and 2417-331-0004-000-1 – ANNEXATION



# EXISTING/PROPOSED FUTURE LAND USE

Current FLU: COM (Commercial – St. Lucie County)

Proposed FLU: GC (General Commercial – City of Fort Pierce)



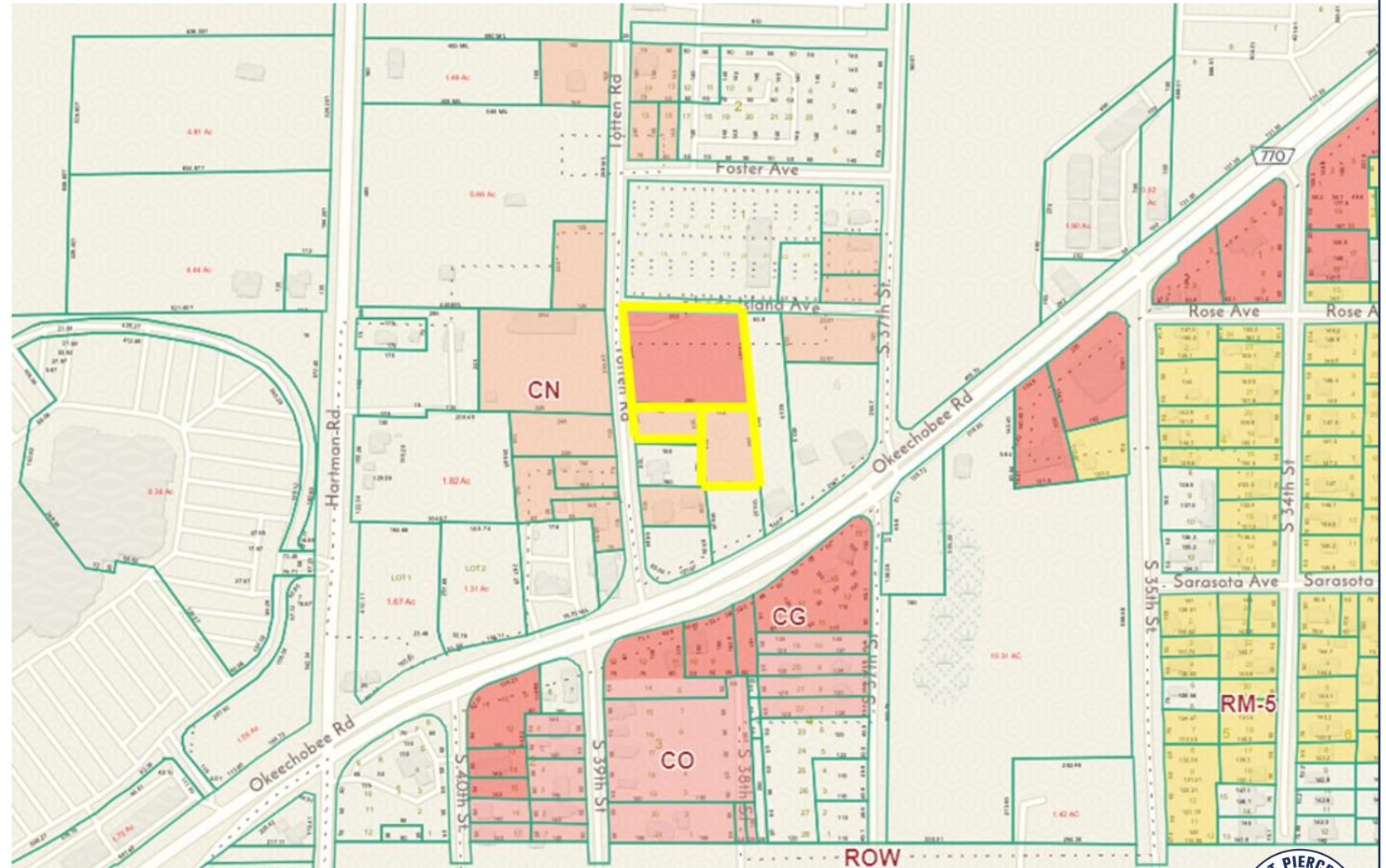
NAME OF PROJECT



# EXISTING/PROPOSED ZONING

Currently Zoned: CG/CN (Commercial General and Commercial Neighborhood – St. Lucie County)

Proposed Zoning: C-3 (General Commercial– City of Fort Pierce)



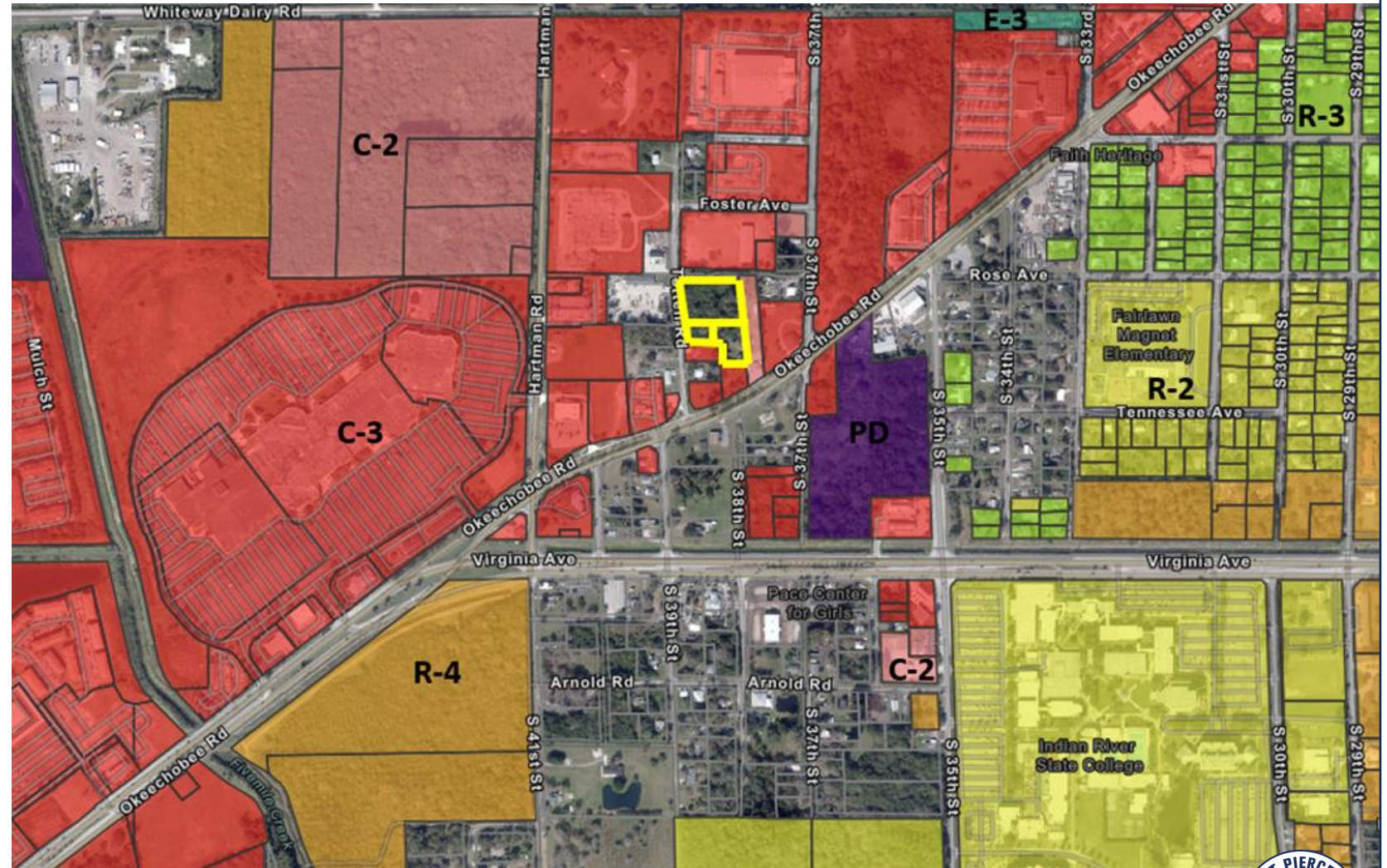
PARCEL IDs: 2417-331-0003-000-4, 2417-331-0005-000-8 and 2417-331-0004-000-1 – ANNEXATION



# EXISTING/PROPOSED ZONING

Currently Zoned: CG/CN (Commercial General and Commercial Neighborhood – St. Lucie County)

Proposed Zoning: C-3 (General Commercial– City of Fort Pierce)



PARCEL IDs: 2417-331-0003-000-4, 2417-331-0005-000-8 and 2417-331-0004-000-1 – ANNEXATION



## PLANNING BOARD

At their September 11th, 2023, meeting, the Planning Board voted unanimously to move this Annexation to City Commission with a recommendation of approval.



## RECOMMENDATION

Staff recommendation is for City Commission to vote APPROVAL of the proposed Annexation.

## ALTERNATIVE RECOMMENDATION

1. Recommend Approval with conditions.
2. Recommend Disapproval.

PARCEL IDs: 2417-331-0003-000-4, 2417-331-0005-000-8 and 2417-331-0004-000-1 – ANNEXATION





# CITY OF FORT PIERCE

## City Commission

October 16<sup>th</sup>, 2023

### Jules Annexation

Parcel IDs: 2417-331-0003-000-4, 2417-331-0005-000-8 and 2417-331-0004-000-1