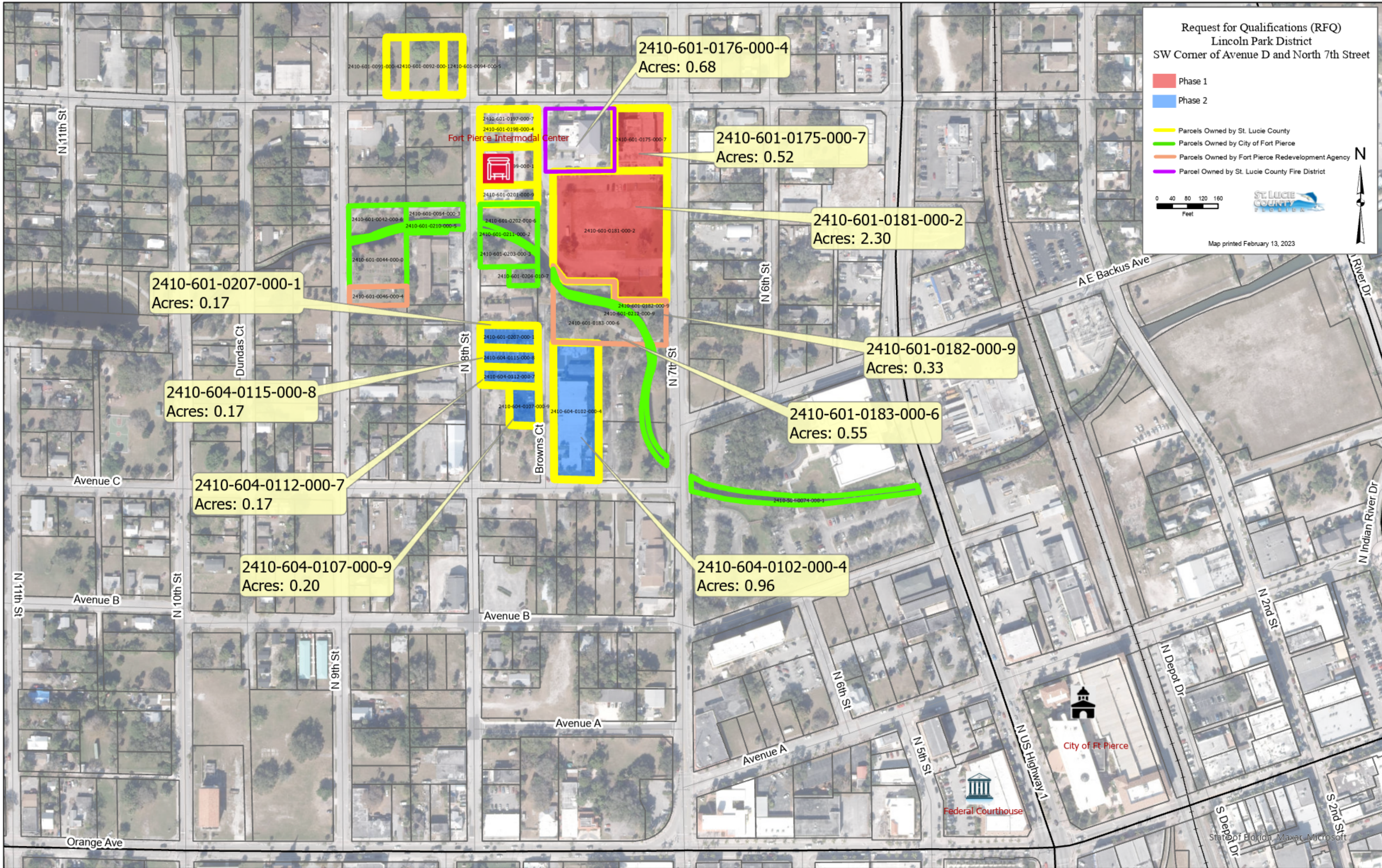


Request for Qualifications (RFQ)
Lincoln Park District
SW Corner of Avenue D and North 7th Street

- Phase 1
- Phase 2
- Parcels Owned by St. Lucie County
- Parcels Owned by City of Fort Pierce
- Parcels Owned by Fort Pierce Redevelopment Agency
- Parcel Owned by St. Lucie County Fire District



Map printed February 13, 2023



2410-601-0176-000-4
Acres: 0.68

2410-601-0175-000-7
Acres: 0.52

2410-601-0181-000-2
Acres: 2.30

2410-601-0182-000-9
Acres: 0.33

2410-601-0183-000-6
Acres: 0.55

2410-604-0102-000-4
Acres: 0.96

2410-601-0207-000-1
Acres: 0.17

2410-604-0115-000-8
Acres: 0.17

2410-604-0112-000-7
Acres: 0.17

2410-604-0107-000-9
Acres: 0.20

Fort Pierce Intermodal Center

City of Ft Pierce

Federal Courthouse