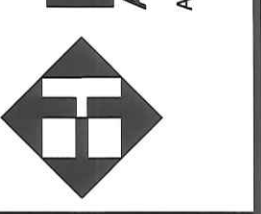
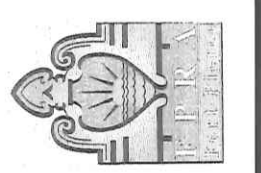


04/03/08
 Christopher J. Haskell, MA
 Project Architect
 REG. NO. A00007053

The Haskell Company
 111 Riverside Avenue
 Jacksonville, Florida 32202
 Phone # (904) 791-4500



DOWNTOWN PARKING GARAGE & SHELL BUILDING
**FORT PIERCE
 REDEVELOPMENT AGENCY**
 FORT PIERCE, FLORIDA



DATE	ISSUE/REVISION
4/1/08	FO-#7
2/25/08	FO-#6
8/1/07	FO-#1
8/12/07	01
3/30/07	01
2/23/07	70% REVIEW
02/05/07	SITE REVIEW
01/24/07	Prelim. Review

THE FOLLOWING APPLIES TO EVERY LOCATION ON THIS SHEET:

- 1
- 2
- 3
- 4
- 5
- 6
- 7
- 8

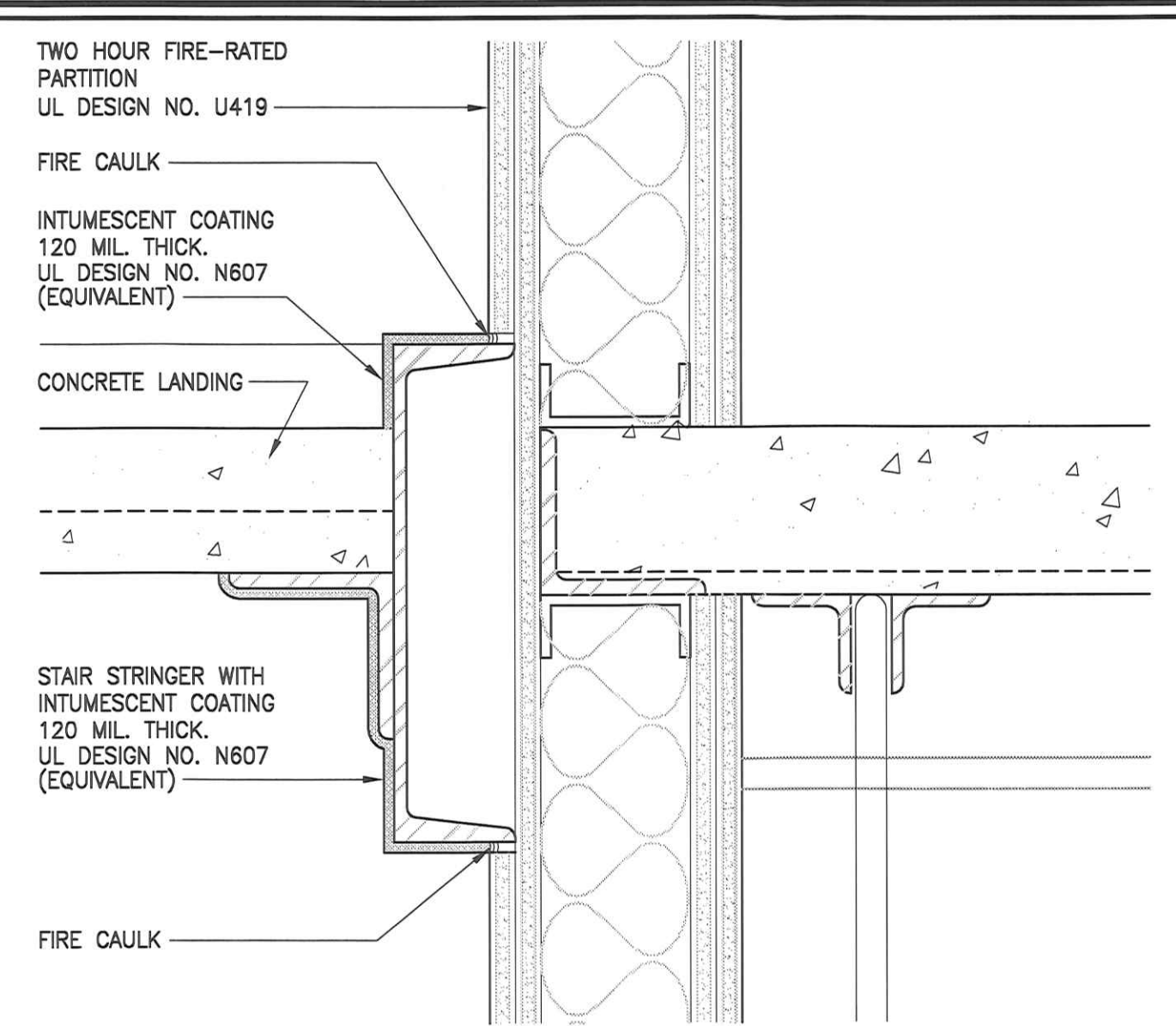
We hereby expressly reserve the property rights to this drawing and it is not to be reproduced, copied in any format or manner whatsoever without first obtaining our express written permission and consent.

DRAWN BY: KML
 CHECKED BY: CNH

AE JOB NUMBER: 41450201

OVERALL FOURTH FLOOR PLAN

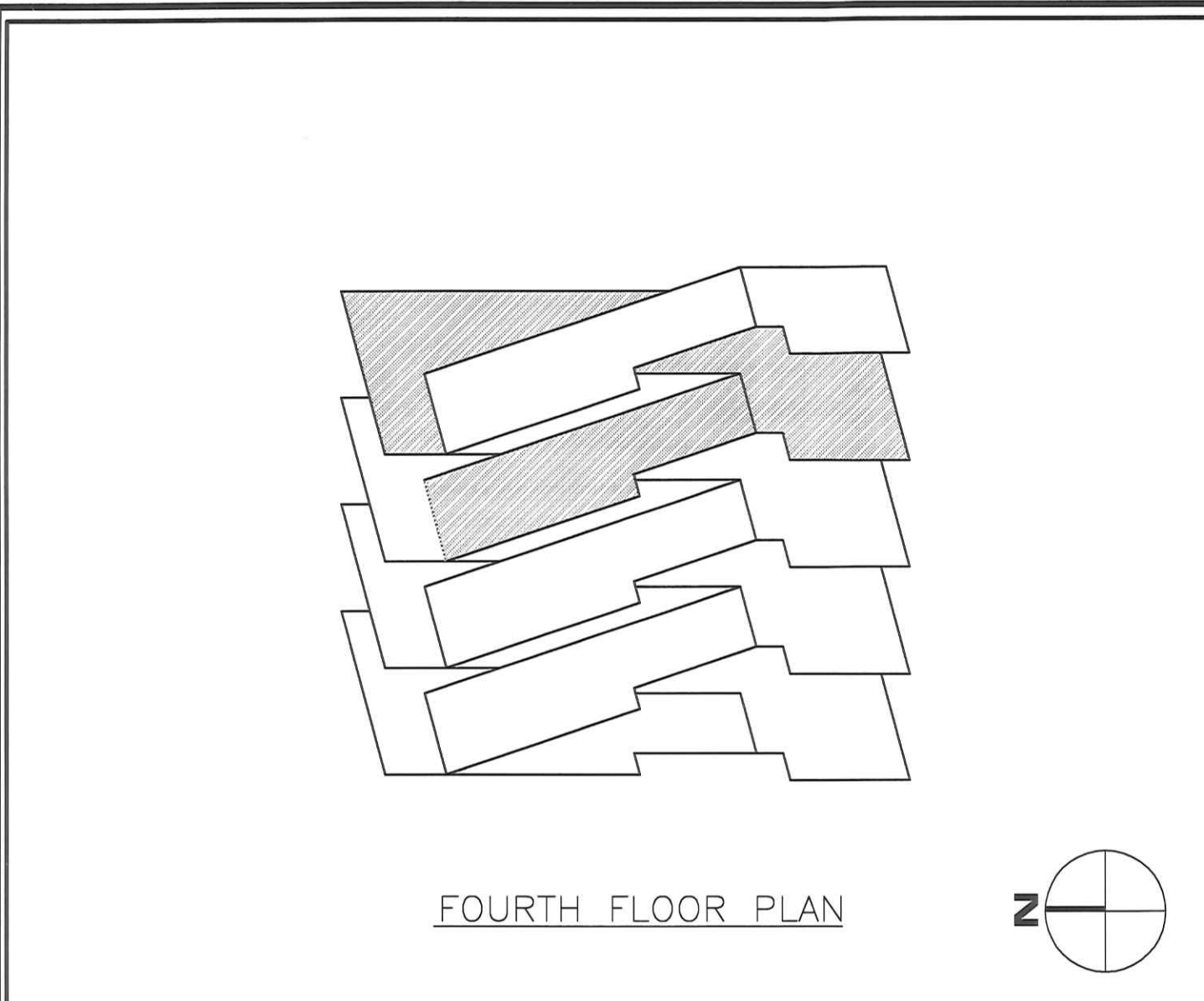
A-140
 SHEET NUMBER



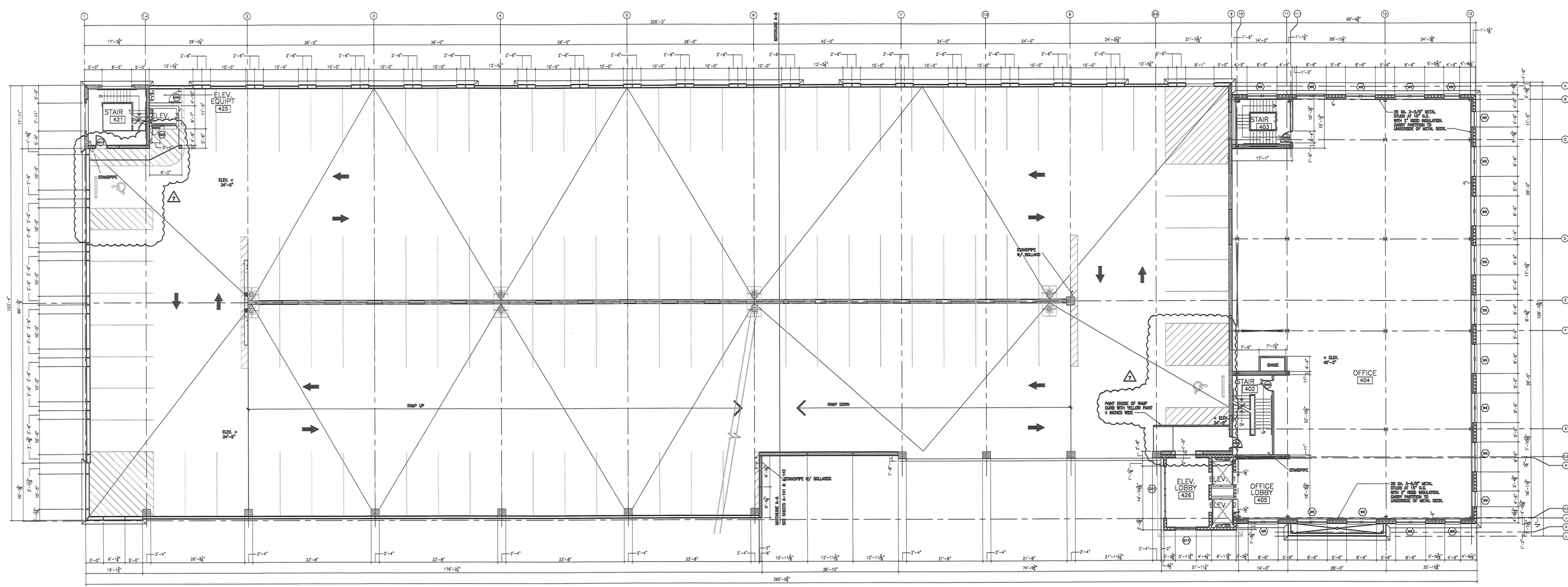
FIRE PROOFING DETAIL AT STAIR STRINGER
 SCALE: 3" = 1'-0" A2

XXX
 XXX
 SCALE: 3" = 1'-0" A3

XXX
 XXX
 SCALE: 3" = 1'-0" A4



KEY PLAN
 SCALE: N.T.S. A1

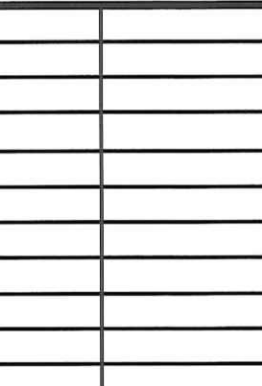


OVERALL FOURTH FLOOR PLAN
 SCALE: 1/16" = 1'-0" A

04/03/08
 Christopher J. Miller, P.E.
 Project Architect
 HASKELL
 04/04/08
 REG. NO. 2400002752

The Haskell Company
 111 Riverside Avenue
 Jacksonville, Florida 32202
 Phone # (904) 791-4500
HASKELL
 America's Design-Build Leader
 AAC00281 EB000606 BD000818 LC2000242

DOWNTOWN PARKING GARAGE & SHELL BUILDING
FORT PIERCE
REDEVELOPMENT AGENCY
 FORT PIERCE, FLORIDA



DATE	ISSUE/REVISION
4/1/08	FD-#7
6/12/07	CI
3/30/07	PI
2/23/07	70% REVIEW
02/05/07	SITE REVIEW
01/24/07	Prelim. Review

THE FOLLOWING APPLIES TO EVERY LOCATION ON THIS SHEET:

-
-
-
-
-
-
-
-

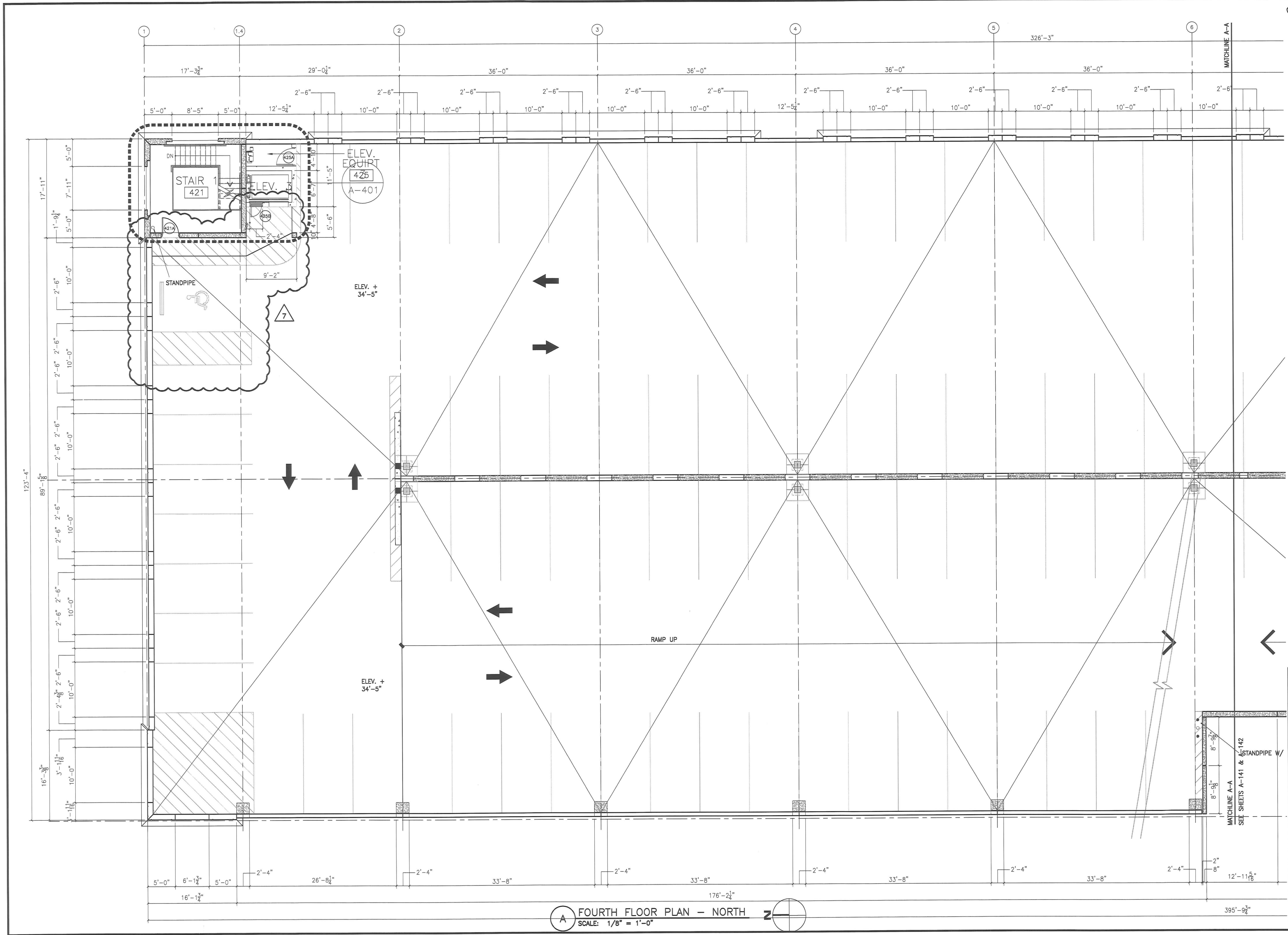
We hereby expressly reserve the property rights to this drawing and it is not to be reproduced, copied in any format or manner whatsoever without first obtaining our express written permission and consent.

DRAWN BY: KML
 CHECKED BY: CNH

AE JOB NUMBER
41450201

FOURTH FLOOR PLAN - NORTH

A-141
 SHEET NUMBER



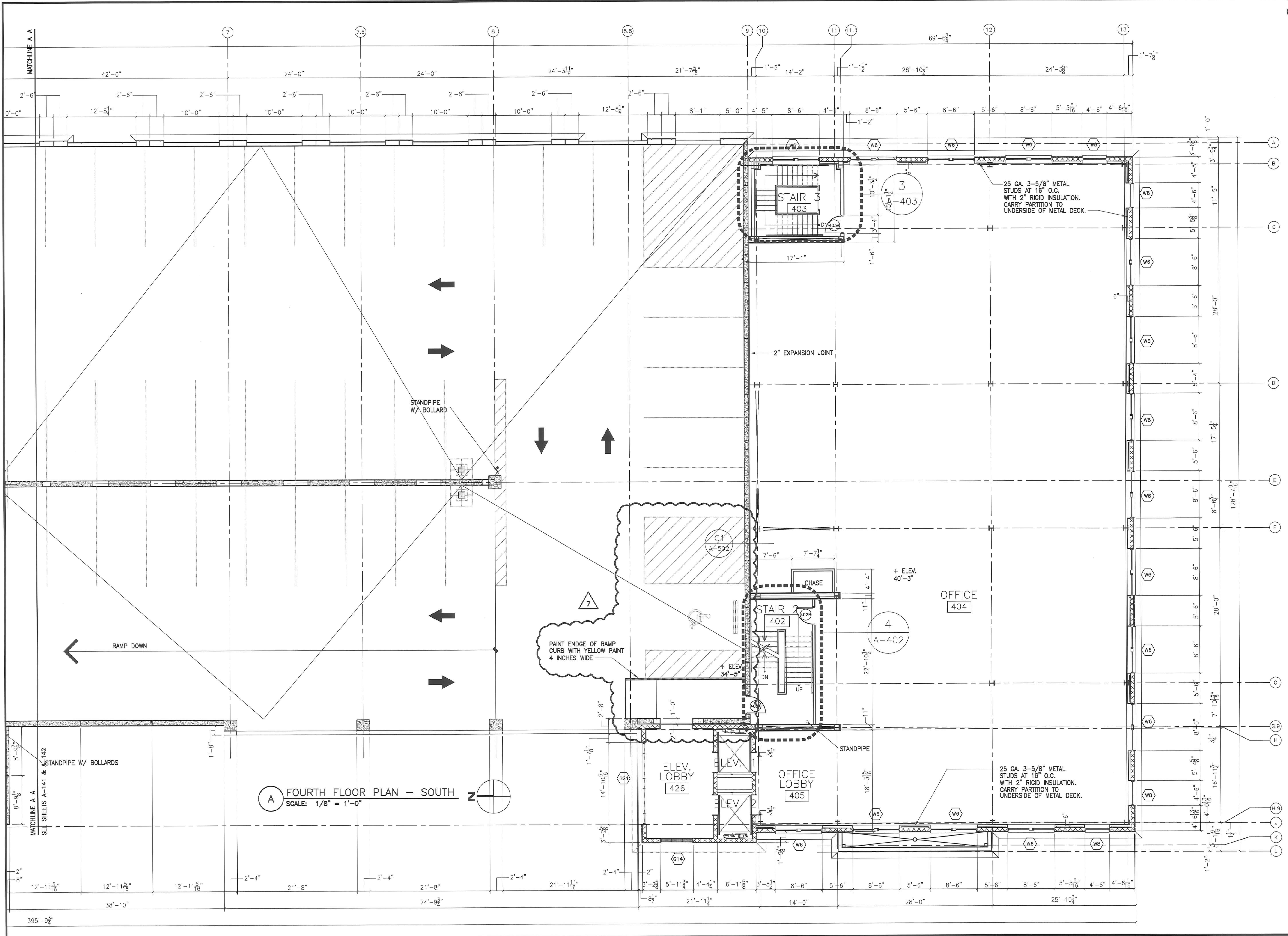
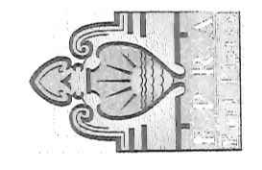
A FOURTH FLOOR PLAN - NORTH
 SCALE: 1/8" = 1'-0"

Christopher L. Williams, AIA
Project Architect
2460-1-009
REG. NO. W000002353

The Haskell Company
111 Riverside Avenue
Jacksonville, Florida 32209
Phone # (904) 791-4500



DOWNTOWN PARKING GARAGE & SHELL BUILDING
FORT PIERCE
REDEVELOPMENT AGENCY
FORT PIERCE, FLORIDA



A FOURTH FLOOR PLAN - SOUTH
SCALE: 1/8" = 1'-0"

THE FOLLOWING APPLIES TO EVERY LOCATION ON THIS SHEET:

- 1 [Symbol]
- 2 [Symbol]
- 3 [Symbol]
- 4 [Symbol]
- 5 [Symbol]
- 6 [Symbol]
- 7 [Symbol]
- 8 [Symbol]

DATE	ISSUE/REVISION
4/1/08	FO-#7
2/25/08	FO-#6
8/31/07	FO#2
8/1/07	FO-#1
6/12/07	CI
5/30/07	PI
2/23/07	70% REVIEW
02/05/07	SITE REVIEW
01/24/07	Prelim. Review

We hereby expressly reserve the property rights in this drawing and it is not to be reproduced, copied in any format or manner whatsoever without first obtaining our express written permission and consent.

DRAWN BY: KML
CHECKED BY: CNH

AE JOB NUMBER
41450201

FOURTH FLOOR PLAN - SOUTH

A-142
SHEET NUMBER