



Litterick Landscape Architecture

2740 SW Martin Downs Blvd. #199
Palm City, FL 34990
561-719-3876
jason.la1677@yahoo.com

Project Name

Farrell Communities - Ft. Pierce

Fort Pierce, Florida

Landscape Architect of Record



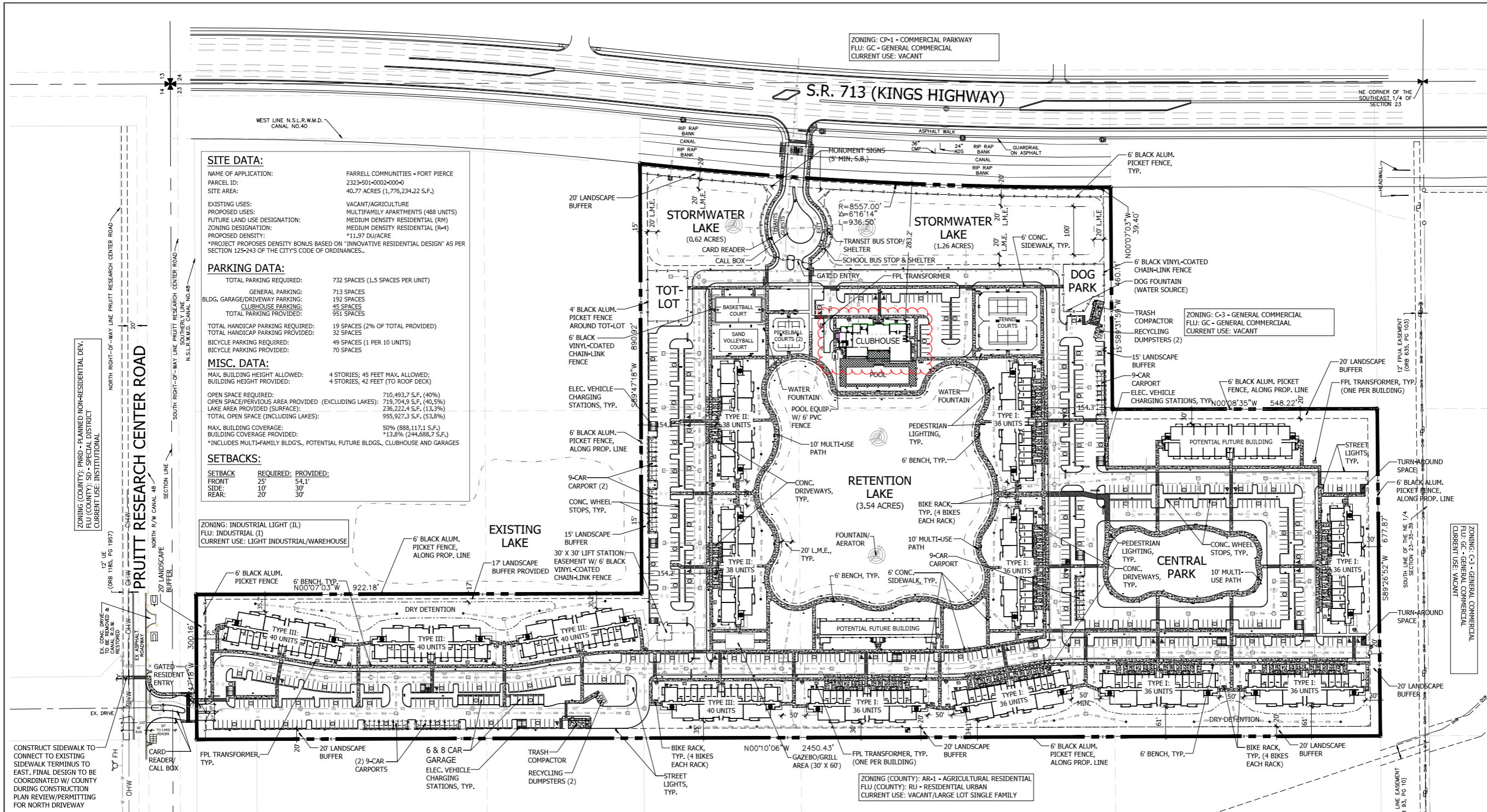
Jason M. Litterick, RLA
(LA0001677)

Scale: 1" = 100'-0"

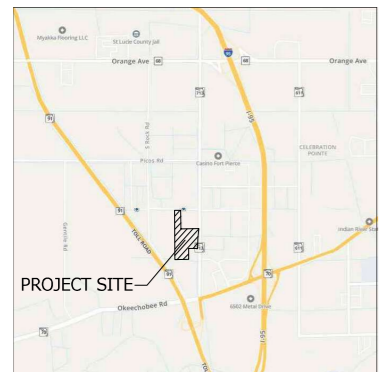
Designed:	JML
Drawn:	JML
Approved:	JML
Date:	9/16/22
Job no.	
Revisions:	12/19/22
	2/22/23
	4/3/23
	10/4/23

Sheet No.

SP-1



LOCATION MAP



PROJECT TEAM

OWNER
Farrell Communities Fort Pierce Owner, LLC
P.O. Box 14
Bridgehampton, New York 11932
Contact: Michael Sanchez (561-586-8045)

ARCHITECT
TL Architecture, Inc.
1100 S. Federal Highway, Suite 2
Boynton Beach, Florida 33435
Contact: Erwin Isdith (561-523-7889)

CIVIL ENGINEER
EDC
10250 SW Village Parkway, Suite 201
Port St. Lucie, Florida 34987
Contact: Rod Kennedy (772-462-2455)

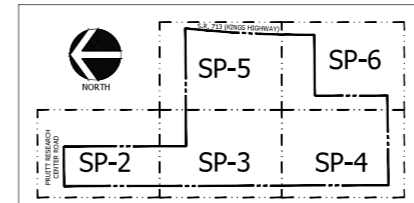
LANDSCAPE ARCHITECT
Litterick Landscape Architecture
2740 SW Martin Downs Boulevard, Suite 199
Palm Beach, Florida 34990
Contact: Jason Litterick (561-719-3876)

SURVEYOR
Caulfield & Wheeler, Inc.
7900 Glades Road, Suite 100
Boca Raton, Florida 33434
Contact: Ronnie Furniss (561-38-92-1991)

GENERAL NOTES:

1. NO ENTITLEMENTS/UNITS ARE ASSIGNED TO THE TWO (2) "POTENTIAL FUTURE BUILDINGS" DEPICTED ON THE SITE PLAN AS PART OF THIS APPROVAL. DENSITY IS LIMITED TO 488 UNITS UNTIL OTHERWISE AMENDED BY APPROVAL OF THE CITY COMMISSION. CITY STAFF MAY REVIEW AND APPROVE/DENY AN APPLICATION(S) TO TRANSFER UNITS BETWEEN BUILDINGS, INCLUDING THE POTENTIAL FUTURE BUILDINGS, AND/OR TO PHASE THE PROJECT SO LONG AS THE DESIGN INTENT APPROVED BY THE CITY COMMISSION IS MAINTAINED AND DENSITY DOES NOT EXCEED 488 UNITS.

KEY SHEET



REFER TO SHEETS SP-2 THRU SP-6 FOR SITE PLAN ENLARGEMENTS
REFER TO SHEET SP-7 FOR SITE PLAN DETAILS

Site Plan

