
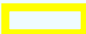
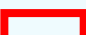
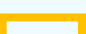


KINGS HIGHWAY JOBS CORRIDOR PROJECT

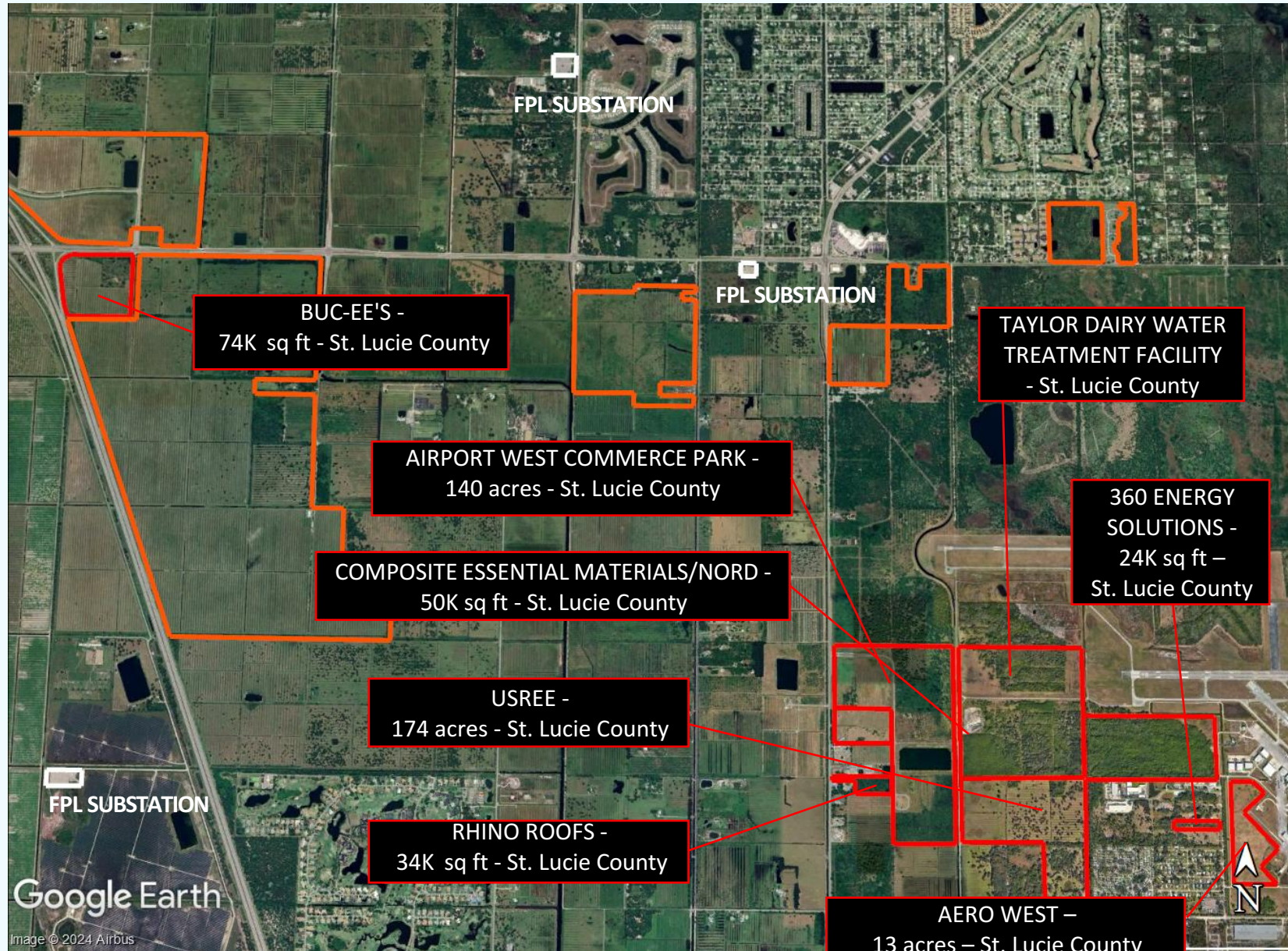


KINGS HIGHWAY CORRIDOR ST. LUCIE BLVD. TO INDRIIO RD

LEGEND

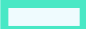


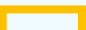
- INDUSTRIAL PROJECTS (built, shell only) 
- INDUSTRIAL PROJECTS (approved) 
- INDUSTRIAL PROJECTS (proposed) 
- RESIDENTIAL PROJECTS 

(approved or proposed)

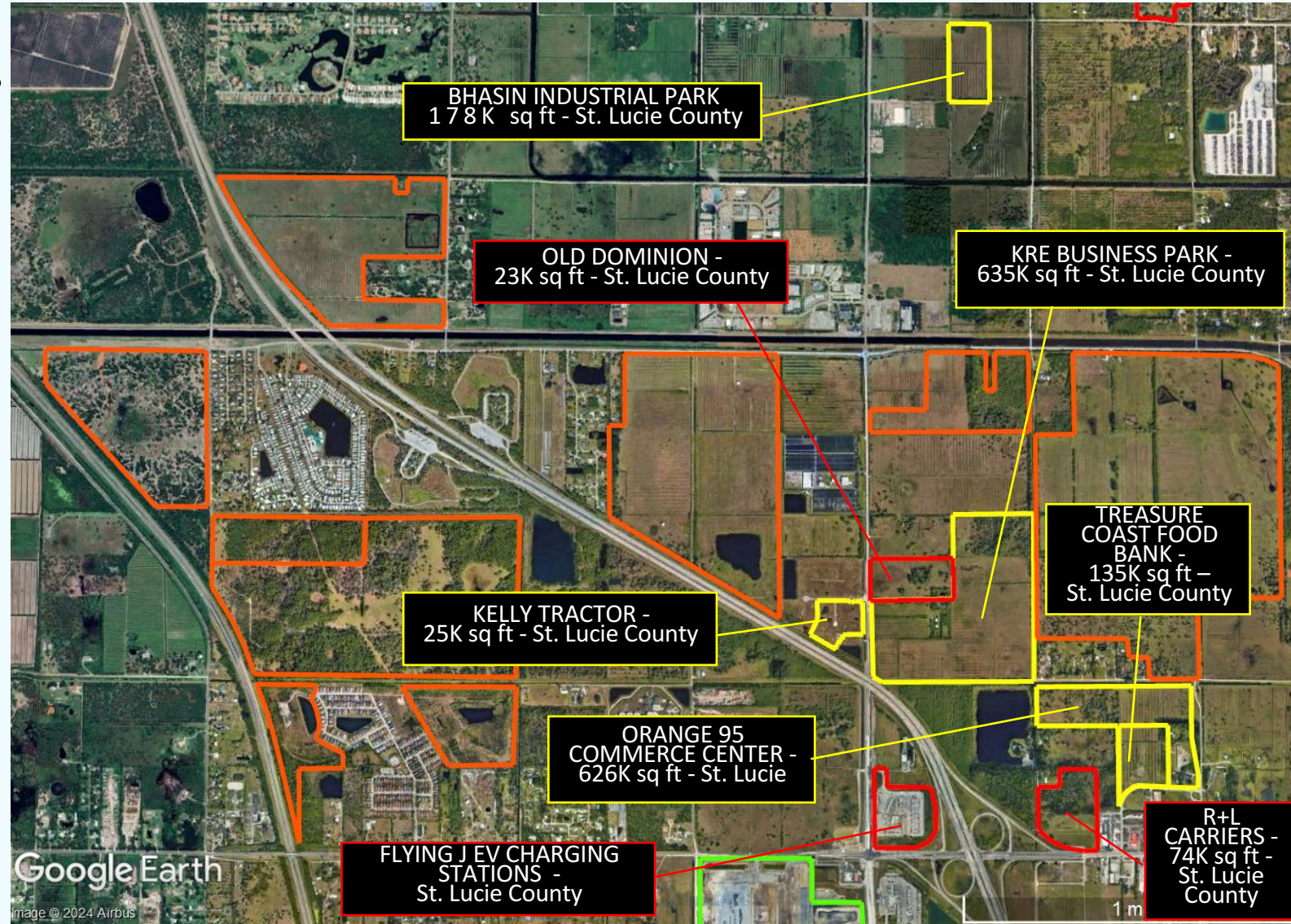


KINGS HIGHWAY CORRIDOR ORANGE AVE. TO ST. LUCIE BLVD.

LEGEND

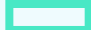
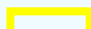


- INDUSTRIAL PROJECTS (built, shell only) 
- INDUSTRIAL PROJECTS (approved) 
- INDUSTRIAL PROJECTS (proposed) 
- RESIDENTIAL PROJECTS 

(approved or proposed)

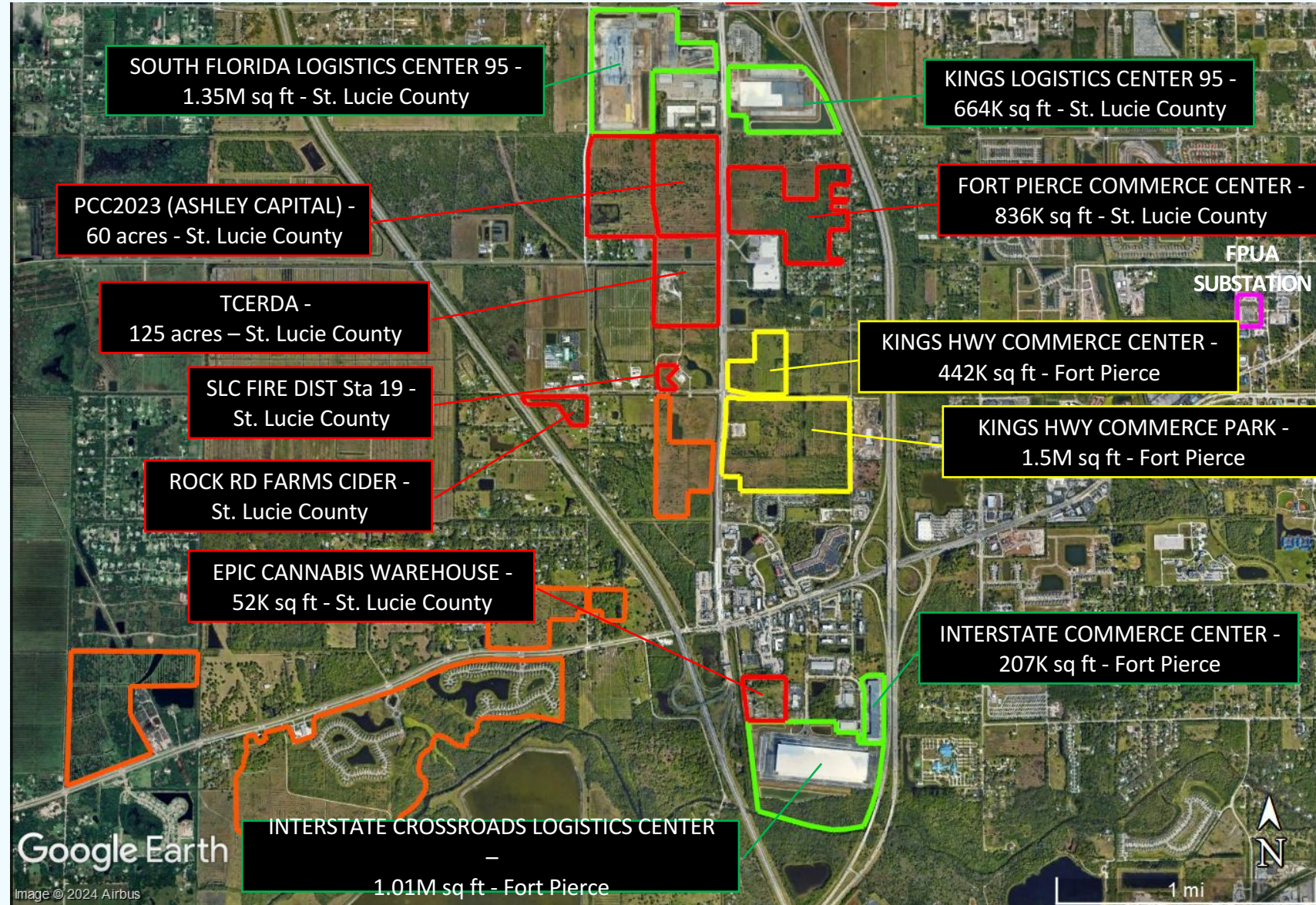


KINGS HIGHWAY CORRIDOR OKEECHOBEE RD TO ORANGE AVE.

LEGEND

- INDUSTRIAL PROJECTS (built, shell only) 
- INDUSTRIAL PROJECTS (approved) 
- INDUSTRIAL PROJECTS (proposed) 
- RESIDENTIAL PROJECTS 

(approved or proposed)



Corridor Plans: Opportunities and Challenges



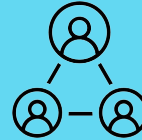
Housing



Jurisdictions



Retail



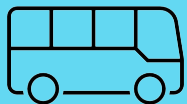
Neighbors



Utilities



Architecture



Transportation



Landscaping

The EDC bridges relationships between the City of Fort Pierce, St. Lucie County, FPUA & property owners.

Any Questions?

Thank you for your time today!

Peter J. Tesch
EDC President
ptesch@youredc.com
772-324-2014 x206

Wes McCurry
EDC Senior VP
wmccurry@youredc.com
772-324-2014 x205

www.youredc.com