

Mitigation Data:

Native Trees:

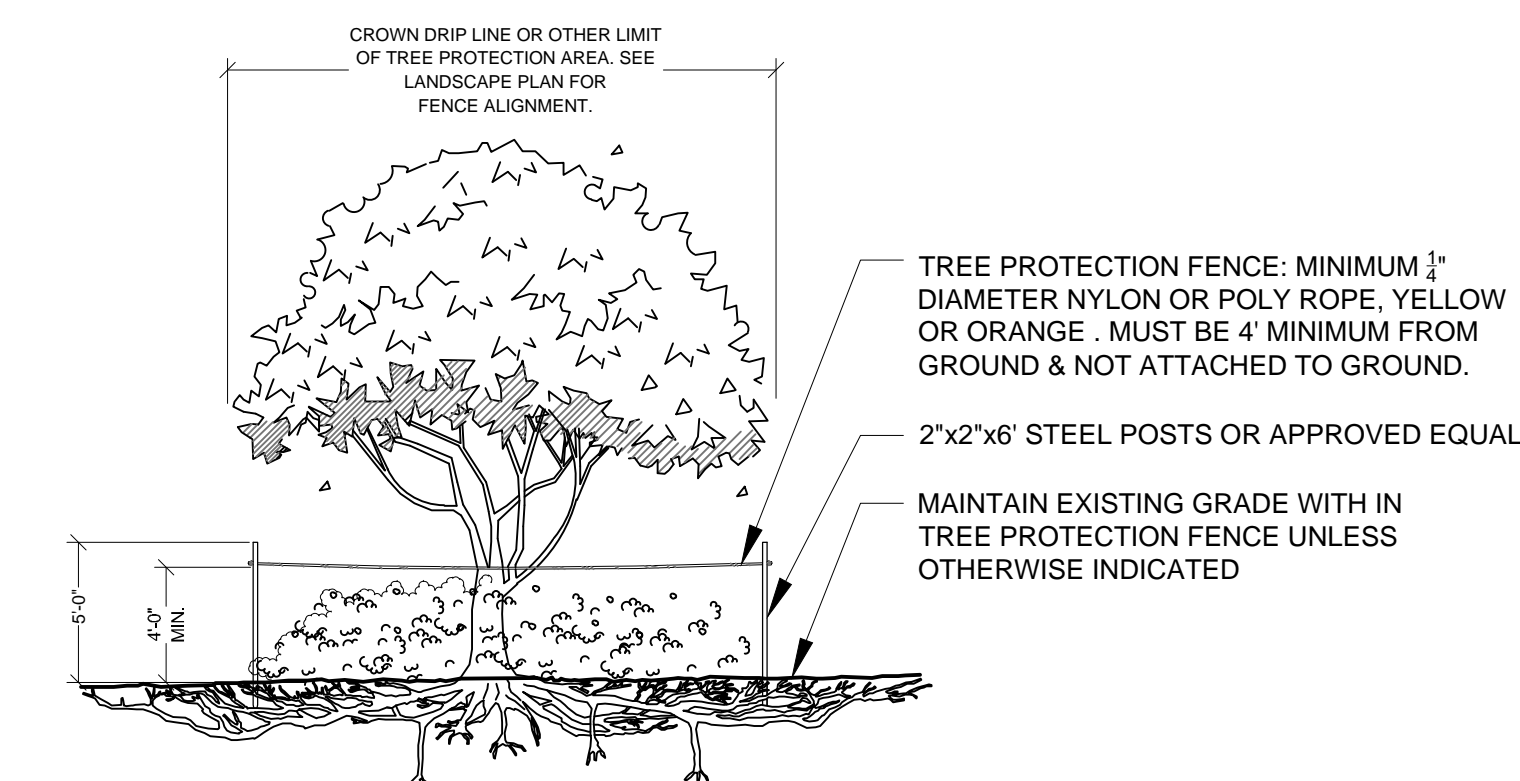
| | |
|---|-----------|
| Trees Removed: | 12,394.2" |
| Mitigation Required: | 12,394.2" |
| Trees Preserved: | 0" |
| Preserved Tree Offset: | 0" |
| Mitigation Req'd: | 0" |
| Additional Street Trees Planted Above Code Min: | 0" |
| Additional Trees Planted: | 0" |

Native Palms:

| | |
|-----------------------------------|-----|
| Palms Removed (10' C.T. Minimum): | 487 |
| Palms Preserved: | 0 |
| Palm Mitigation Required: | 487 |
| Palms Provided: | 0 |

Mitigation Notes:

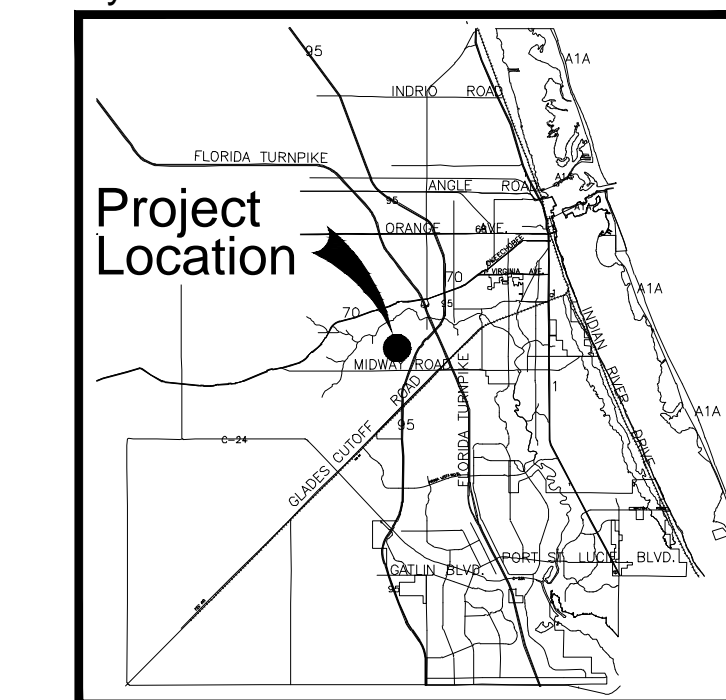
1. Tree mitigation is for the removal of existing native trees at 14" DBH and greater.
2. Palm mitigation is for the removal of existing native palms at 10' CT and greater.
3. Species that are mitigated for must be replaced with that of the same species or that of another native species.
4. All reasonable steps have been taken so as to preserve as much existing native vegetation as practicable.
5. Trees to be mitigated are located in areas designated for construction.
6. A suitable protective barrier, constructed of metal, wood, safety fencing, or other durable material shall be placed around existing native vegetation to remain.
7. Existing native understory not in direct conflict with proposed construction activity shall remain in place.



TREE PROTECTION BARRICADE
NOT TO SCALE

- NOTES:**
- 1- SEE LANDSCAPE PLAN FOR FENCE ALIGNMENT.
 - 3- NO PRUNING SHALL BE PERFORMED EXCEPT BY APPROVED ARBORIST.
 - 4- NO EQUIPMENT SHALL OPERATE INSIDE THE PROTECTIVE FENCING INCLUDING DURING FENCE INSTALLATION AND REMOVAL.

Key / Location:



Project Team:

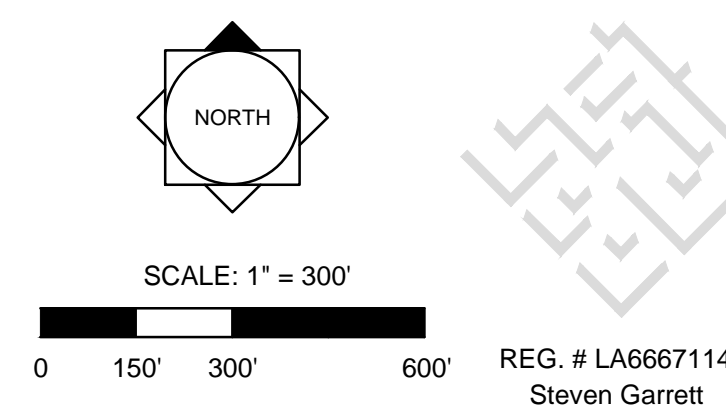
| | |
|--|--|
| Client & Property Owner: | Sunrise Residential, LLC 200 E. Robinson St. Ste. 1120 Orlando, Florida 32801 |
| Land Planner / Landscape Architect: | Lucido & Associates 701 East Ocean Boulevard Stuart, Florida 34994 |
| Engineer: | Mills, Short & Associates 700 22nd Place Vero Beach, Florida 32960 |
| Surveyor: | GSS Surveying and Mapping, LLC 700 22nd Place, Ste. 2A Vero Beach, Florida 32960 |

Sunrise PD Phase 1

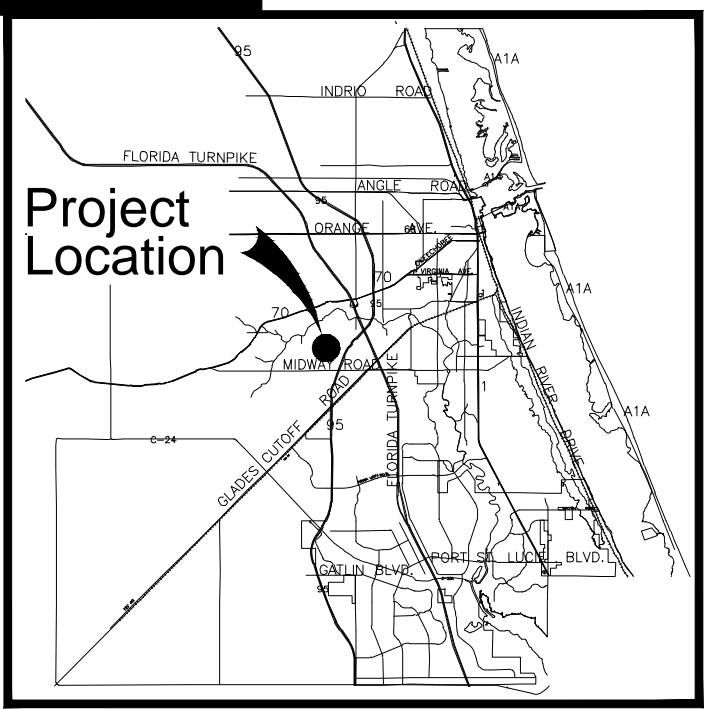
City of Fort Pierce, Florida

Mitigation Plan

| Date | By | Description |
|------------|----|-------------------|
| 08.15.2024 | AC | Initial Submittal |
| | | |
| | | |
| | | |
| | | |
| | | |
| | | |
| | | |
| | | |
| | | |



| | | |
|------------------|--|-------------|
| Designer | AC | Sheet |
| Manager | SG | MI-1 |
| Project Number | 22-405 | |
| Municipal Number | --- | |
| Computer File | 22-405 Sunrise Residential - Mitigation Plan.dwg | |



Project Team:
 Client & Property Owner: Sunrise Residential, LLC
 200 E. Robinson St. Ste. 1120
 Orlando, Florida 32801
 Land Planner / Landscape Architect: Lucido & Associates
 701 East Ocean Boulevard
 Stuart, Florida 34994
 Engineer: Mills, Short & Associates
 700 22nd Place
 Vero Beach, Florida 32960
 Surveyor: GSS Surveying and Mapping, LLC
 700 22nd Place, Ste. 2A
 Vero Beach, Florida 32960

N.S.I.R.W.C.D. CANAL NO. 93
 (72.00' R/W)



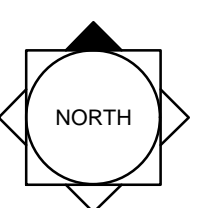
MATCHLINE - SHEET MI-2
 MATCHLINE - SHEET MI-8

Sunrise PD Phase 1

City of Fort Pierce, Florida

Mitigation Plan

| Date | By | Description |
|------------|----|-------------------|
| 08.15.2024 | AC | Initial Submittal |



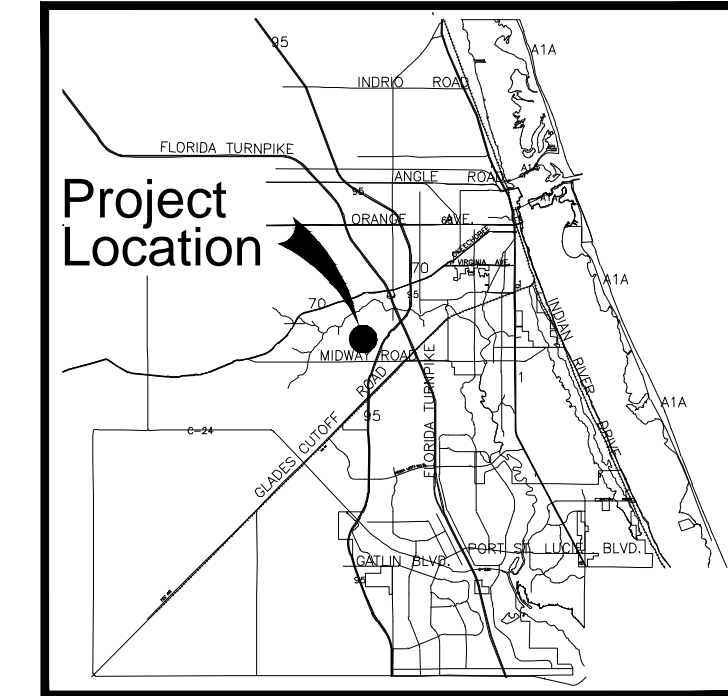
SCALE: 1" = 50'
 0 25' 50' 100'

REG. # LA6667114
 Steven Garrett

| | | |
|------------------|--|-------------|
| Designer | AC | Sheet |
| Manager | SG | MI-2 |
| Project Number | 22-405 | |
| Municipal Number | --- | |
| Computer File | 22-405 Sunrise Residential - Mitigation Plan.dwg | |

© Copyright Lucido & Associates. These documents and their contents are the property of Lucido & Associates. Any reproductions, revisions, modifications or use of these documents without the express written consent of Lucido & Associates is prohibited by law.

Key / Location:



Project Team:

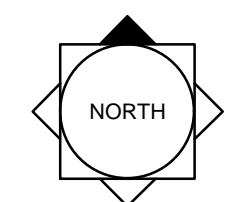
- Client & Property Owner: Sunrise Residential, LLC
200 E. Robinson St. Ste. 1120
Orlando, Florida 32801
- Land Planner / Landscape Architect: Lucido & Associates
701 East Ocean Boulevard
Stuart, Florida 34994
- Engineer: Mills, Short & Associates
700 22nd Place
Vero Beach, Florida 32960
- Surveyor: GSS Surveying and Mapping, LLC
700 22nd Place, Ste. 2A
Vero Beach, Florida 32960

Sunrise PD Phase 1

City of Fort Pierce, Florida

Mitigation Plan

| Date | By | Description |
|------------|----|-------------------|
| 08.15.2024 | AC | Initial Submittal |



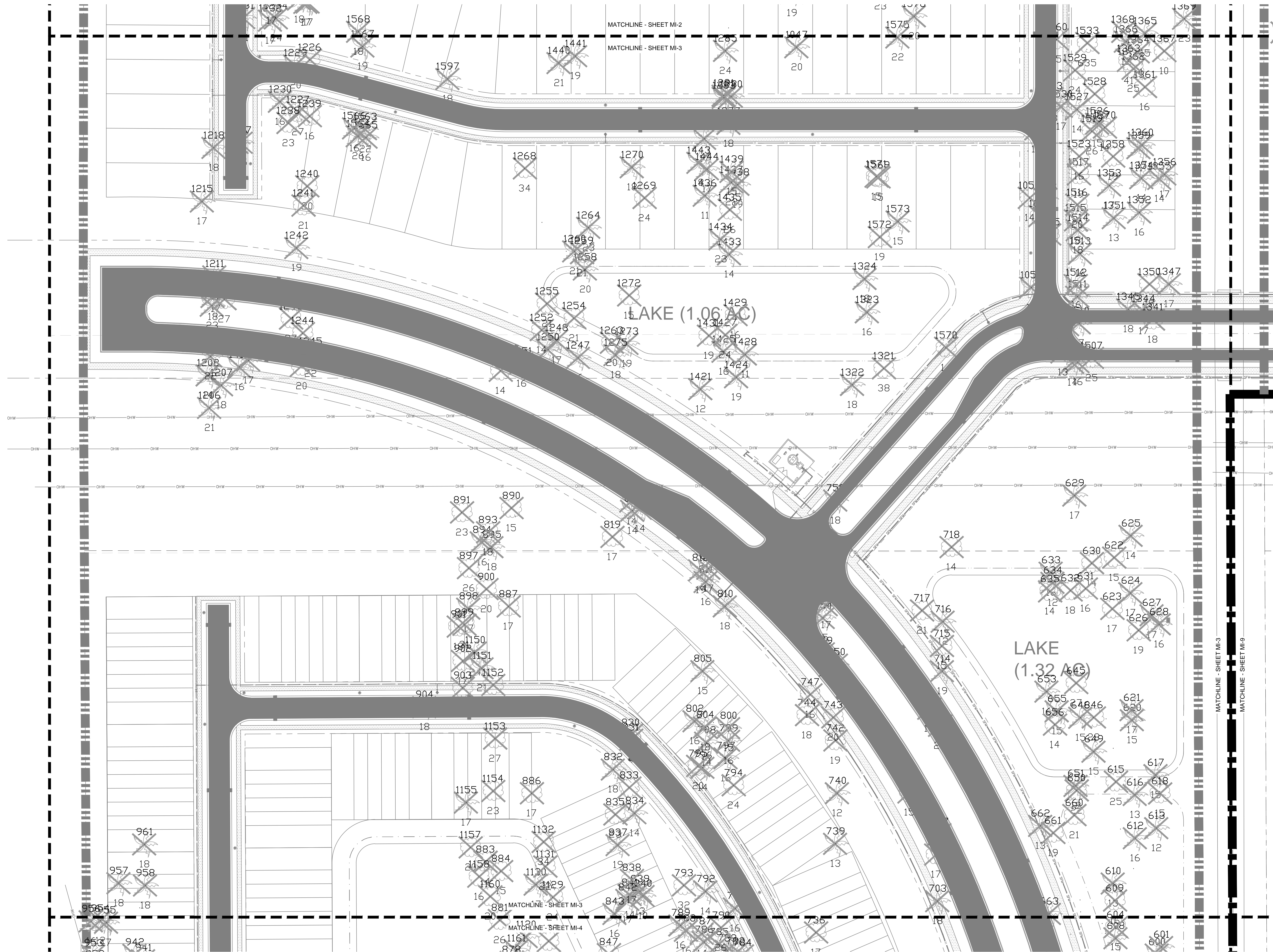
SCALE: 1" = 50'
 0 25' 50' 100'

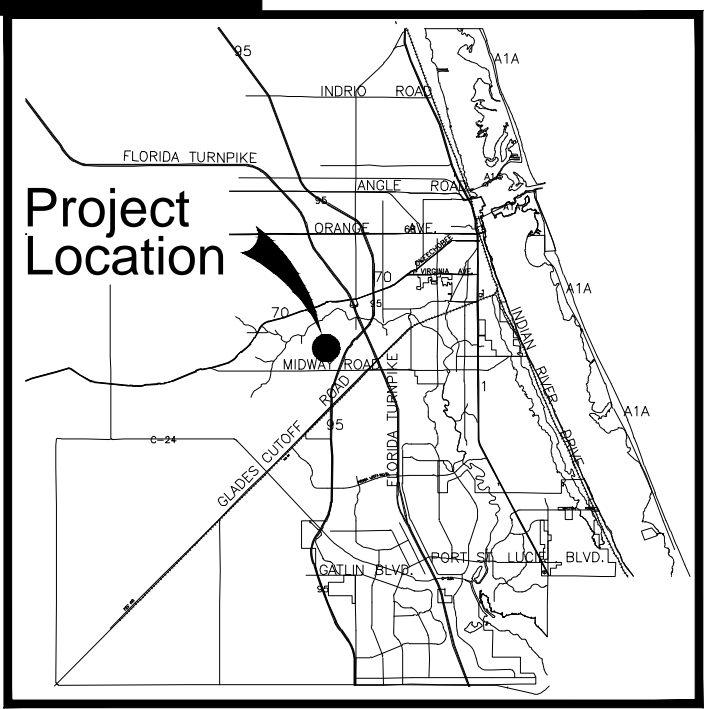
REG. # LA6667114
 Steven Garrett

| | | |
|------------------|--|-------|
| Designer | AC | Sheet |
| Manager | SG | |
| Project Number | 22-405 | |
| Municipal Number | --- | |
| Computer File | 22-405 Sunrise Residential - Mitigation Plan.dwg | |

MI-3

© Copyright Lucido & Associates. These documents and their contents are the property of Lucido & Associates. Any reproductions, revisions, modifications or use of these documents without the express written consent of Lucido & Associates is prohibited by law.





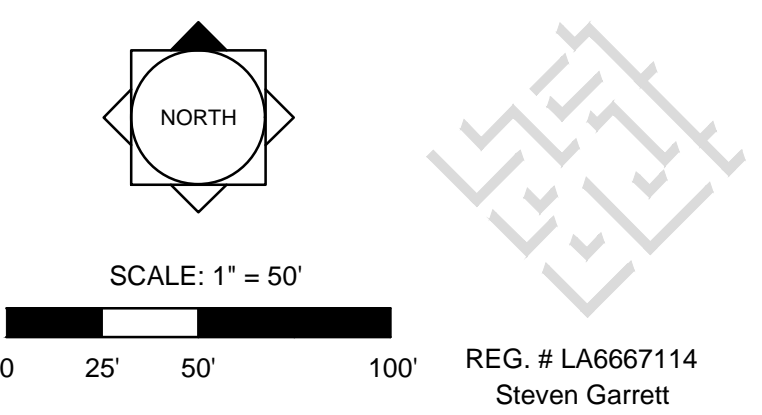
Project Team:
Client & Property Owner: Sunrise Residential, LLC
 200 E. Robinson St. Ste. 1120
 Orlando, Florida 32801
Land Planner / Landscape Architect: Lucido & Associates
 701 East Ocean Boulevard
 Stuart, Florida 34994
Engineer: Mills, Short & Associates
 700 22nd Place
 Vero Beach, Florida 32960
Surveyor: GSS Surveying and Mapping, LLC
 700 22nd Place, Ste. 2A
 Vero Beach, Florida 32960

Sunrise PD Phase 1

City of Fort Pierce, Florida

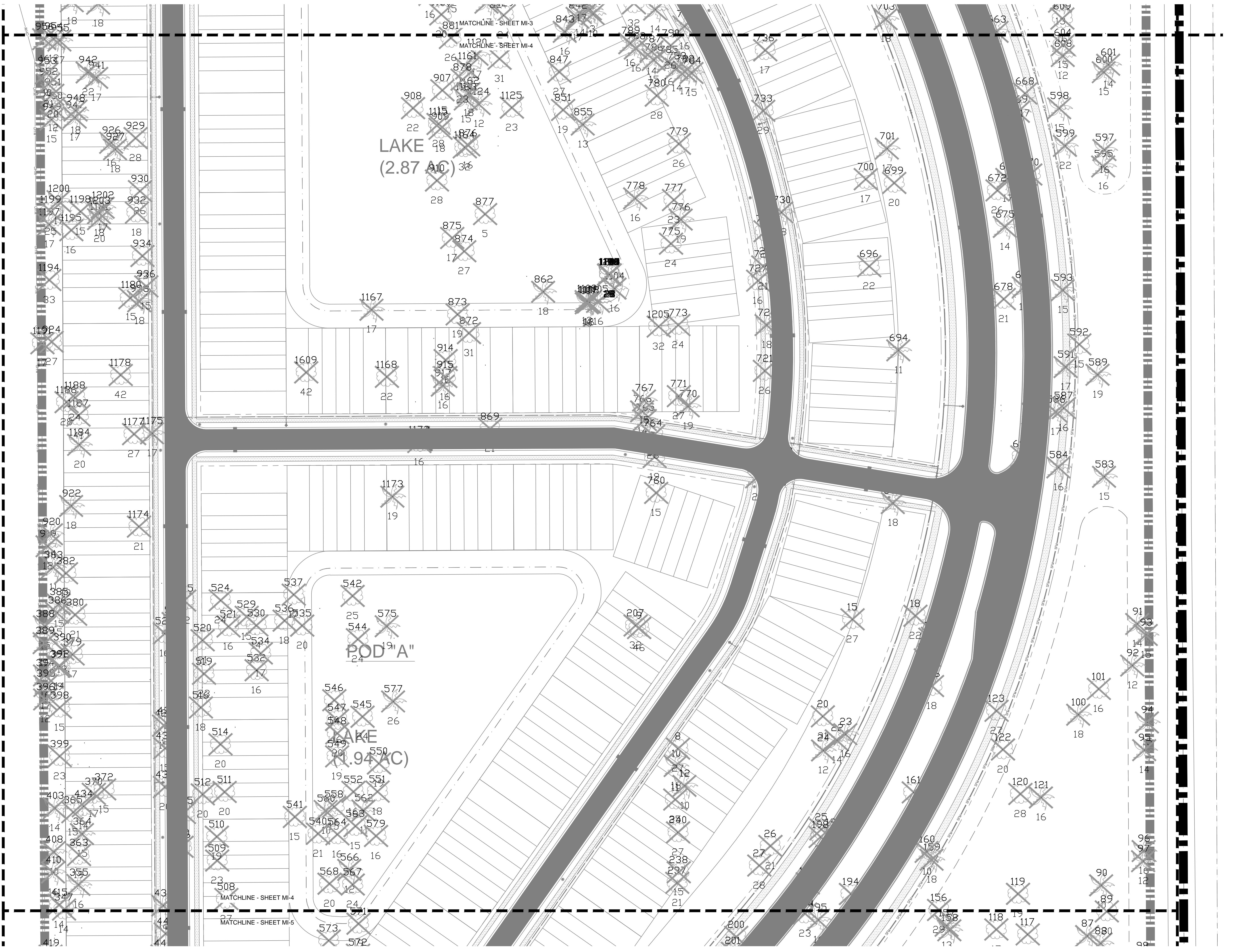
Mitigation Plan

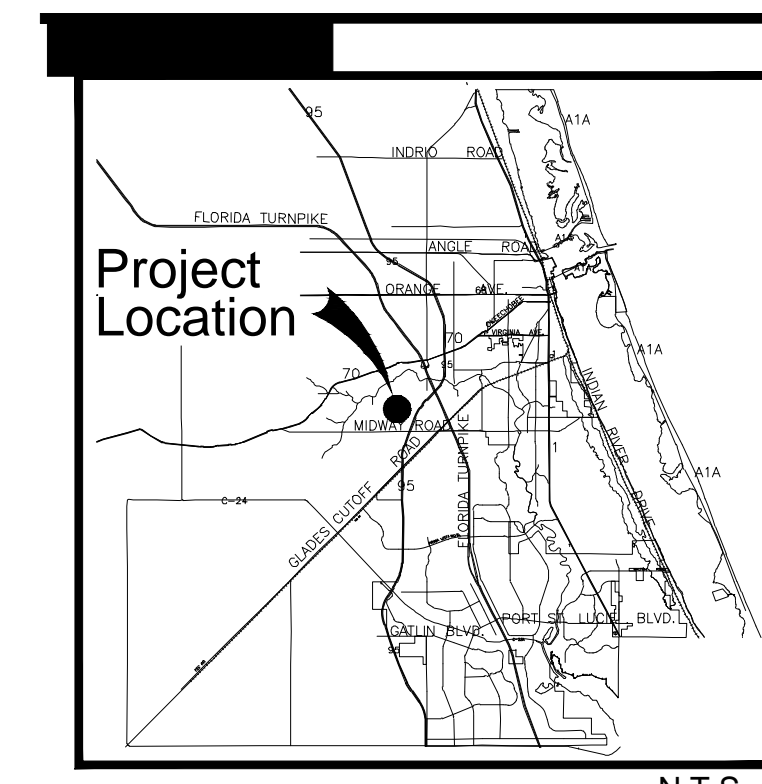
| Date | By | Description |
|------------|----|-------------------|
| 08.15.2024 | AC | Initial Submittal |



| | | |
|------------------|--|-------------|
| Designer | AC | Sheet |
| Manager | SG | MI-4 |
| Project Number | 22-405 | |
| Municipal Number | --- | |
| Computer File | 22-405 Sunrise Residential - Mitigation Plan.dwg | |

© Copyright Lucido & Associates. These documents and their contents are the property of Lucido & Associates. Any reproductions, revisions, modifications or use of these documents without the express written consent of Lucido & Associates is prohibited by law.





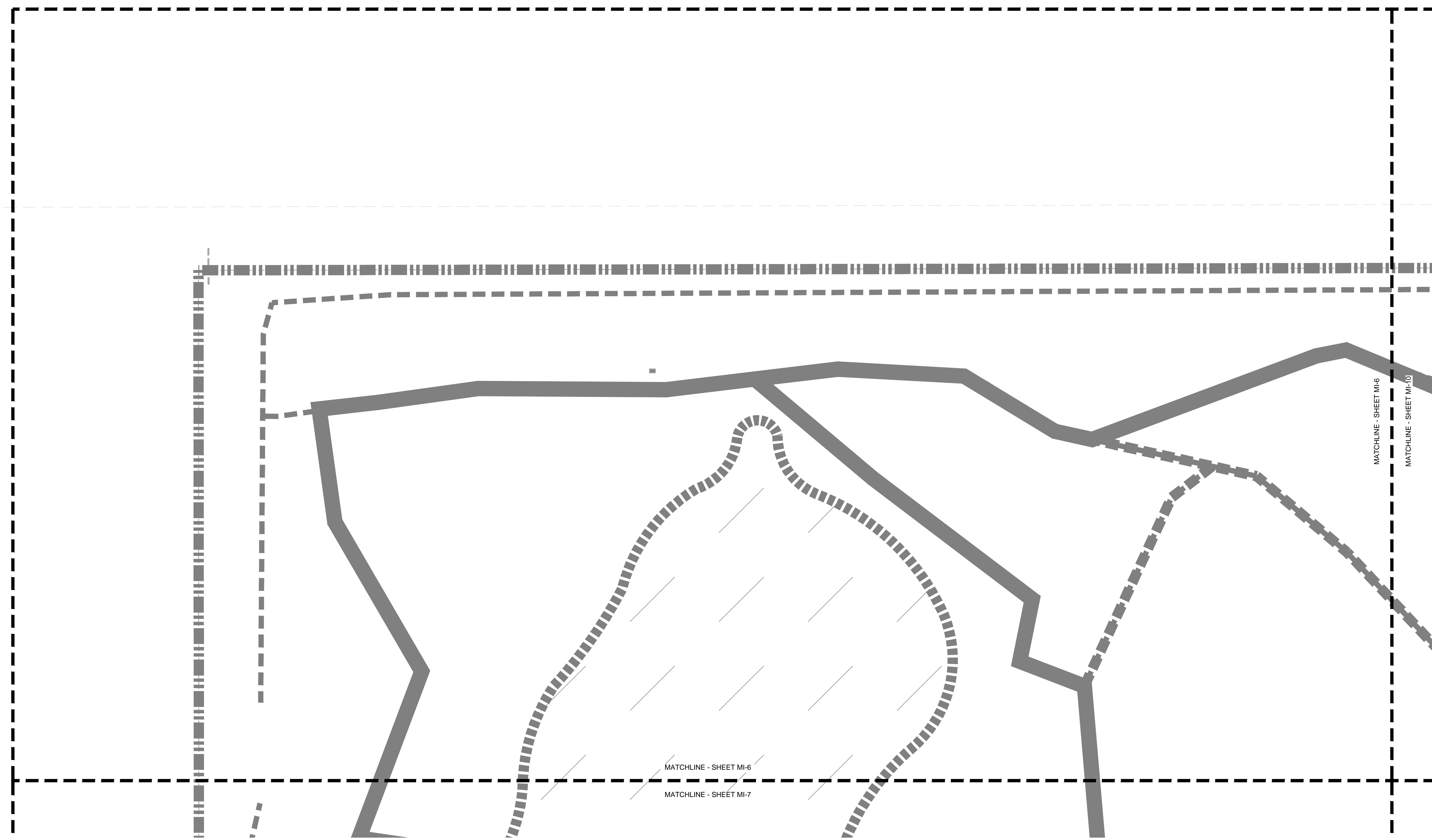
Project Team:

Client & Property Owner: Sunrise Residential, LLC
 200 E. Robinson St. Ste. 1120
 Orlando, Florida 32801

Land Planner / Landscape Architect: Lucido & Associates
 701 East Ocean Boulevard
 Stuart, Florida 34994

Engineer: Mills, Short & Associates
 700 22nd Place
 Vero Beach, Florida 32960

Surveyor: GSS Surveying and Mapping, LLC
 700 22nd Place, Ste. 2A
 Vero Beach, Florida 32960

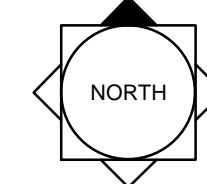



Sunrise PD Phase 1

City of Fort Pierce, Florida

Mitigation Plan

| Date | By | Description |
|------------|----|-------------------|
| 08.15.2024 | AC | Initial Submittal |
| | | |
| | | |
| | | |
| | | |
| | | |
| | | |
| | | |

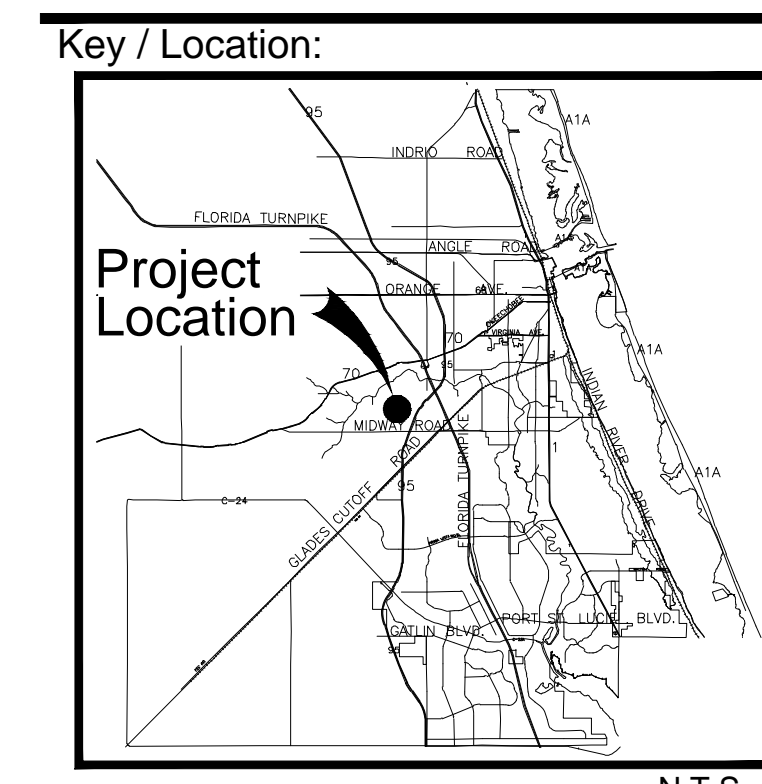
SCALE: 1" = 50'

0 25' 50' 100'

REG. # LA6667114
Steven Garrett

| | | |
|------------------|--|-------------|
| Designer | AC | Sheet |
| Manager | SG | |
| Project Number | 22-405 | MI-6 |
| Municipal Number | --- | |
| Computer File | 22-405 Sunrise Residential - Mitigation Plan.dwg | |

© Copyright Lucido & Associates. These documents and their contents are the property of Lucido & Associates. Any reproductions, revisions, modifications or use of these documents without the express written consent of Lucido & Associates is prohibited by law.



Project Team:

Client & Property Owner: Sunrise Residential, LLC
 200 E. Robinson St. Ste. 1120
 Orlando, Florida 32801

Land Planner / Landscape Architect: Lucido & Associates
 701 East Ocean Boulevard
 Stuart, Florida 34994

Engineer: Mills, Short & Associates
 700 22nd Place
 Vero Beach, Florida 32960

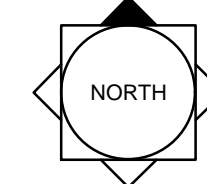

Surveyor: GSS Surveying and Mapping, LLC
 700 22nd Place, Ste. 2A
 Vero Beach, Florida 32960

Sunrise PD Phase 1

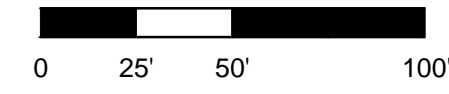
City of Fort Pierce, Florida

Mitigation Plan

| Date | By | Description |
|------------|----|-------------------|
| 08.15.2024 | AC | Initial Submittal |
| | | |
| | | |
| | | |
| | | |
| | | |
| | | |
| | | |
| | | |

SCALE: 1" = 50'

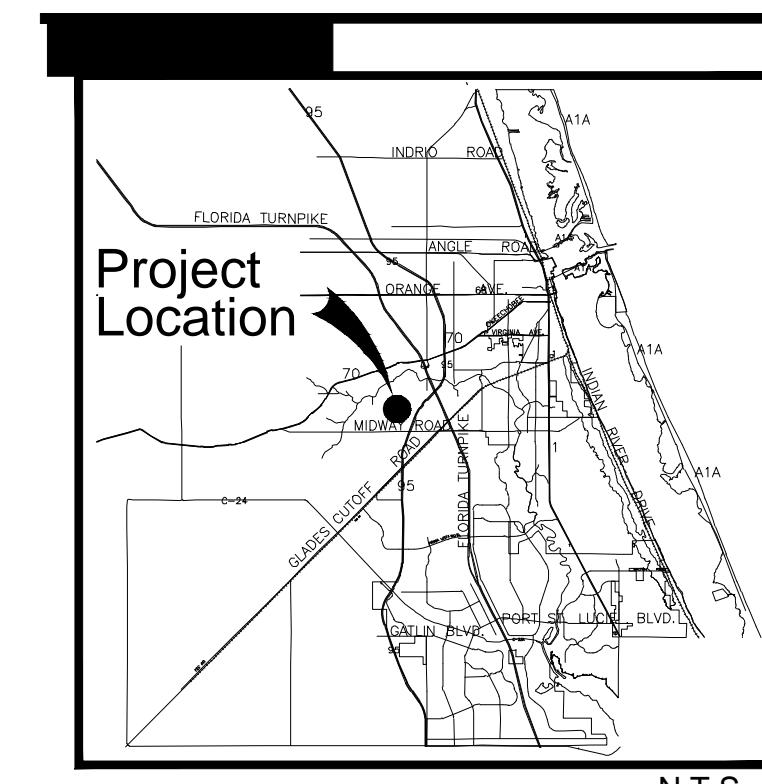


REG. # LA6667114
Steven Garrett

| | | |
|------------------|--|-------------|
| Designer | AC | Sheet |
| Manager | SG | MI-7 |
| Project Number | 22-405 | |
| Municipal Number | --- | |
| Computer File | 22-405 Sunrise Residential - Mitigation Plan.dwg | |

© Copyright Lucido & Associates. These documents and their contents are the property of Lucido & Associates. Any reproductions, revisions, modifications or use of these documents without the express written consent of Lucido & Associates is prohibited by law.





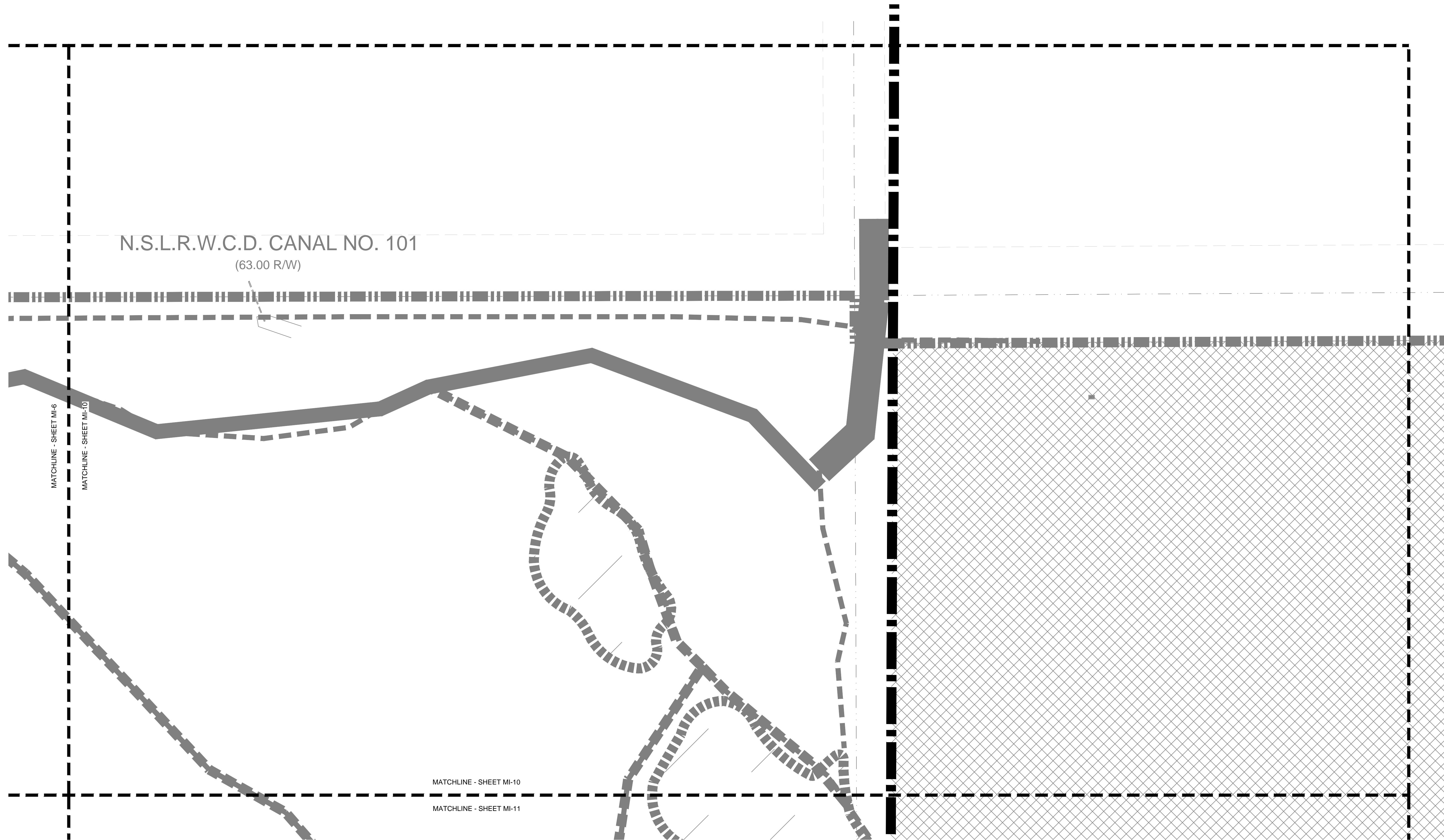
Project Team:

Client & Property Owner: Sunrise Residential, LLC
 200 E. Robinson St. Ste. 1120
 Orlando, Florida 32801

Land Planner / Landscape Architect: Lucido & Associates
 701 East Ocean Boulevard
 Stuart, Florida 34994

Engineer: Mills, Short & Associates
 700 22nd Place
 Vero Beach, Florida 32960

Surveyor: GSS Surveying and Mapping, LLC
 700 22nd Place, Ste. 2A
 Vero Beach, Florida 32960

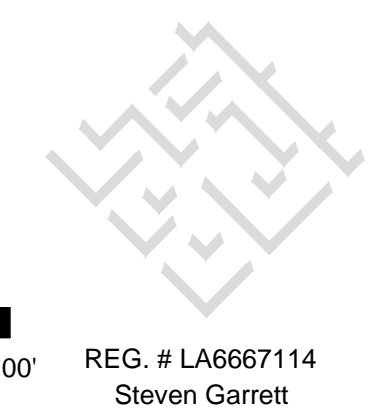
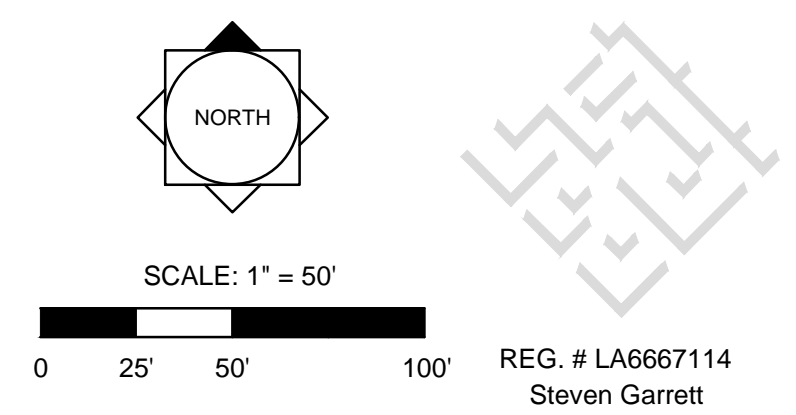


Sunrise PD Phase 1

City of Fort Pierce, Florida

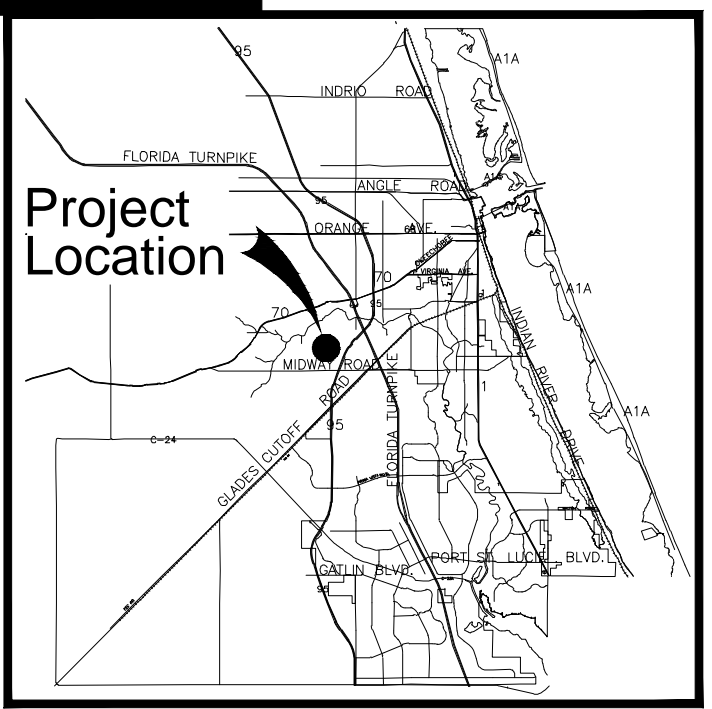
Mitigation Plan

| Date | By | Description |
|------------|----|-------------------|
| 08.15.2024 | AC | Initial Submittal |
| | | |
| | | |
| | | |
| | | |
| | | |
| | | |



| | | |
|------------------|--|--------------|
| Designer | AC | Sheet |
| Manager | SG | MI-10 |
| Project Number | 22-405 | |
| Municipal Number | --- | |
| Computer File | 22-405 Sunrise Residential - Mitigation Plan.dwg | |

© Copyright Lucido & Associates. These documents and their contents are the property of Lucido & Associates. Any reproductions, revisions, modifications or use of these documents without the express written consent of Lucido & Associates is prohibited by law.



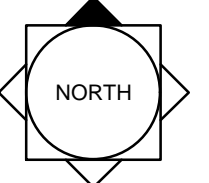

Project Team:
Client & Property Owner: Sunrise Residential, LLC
 200 E. Robinson St. Ste. 1120
 Orlando, Florida 32801
Land Planner / Landscape Architect: Lucido & Associates
 701 East Ocean Boulevard
 Stuart, Florida 34994
Engineer: Mills, Short & Associates
 700 22nd Place
 Vero Beach, Florida 32960
Surveyor: GSS Surveying and Mapping, LLC
 700 22nd Place, Ste. 2A
 Vero Beach, Florida 32960

Sunrise PD Phase 1

City of Fort Pierce, Florida

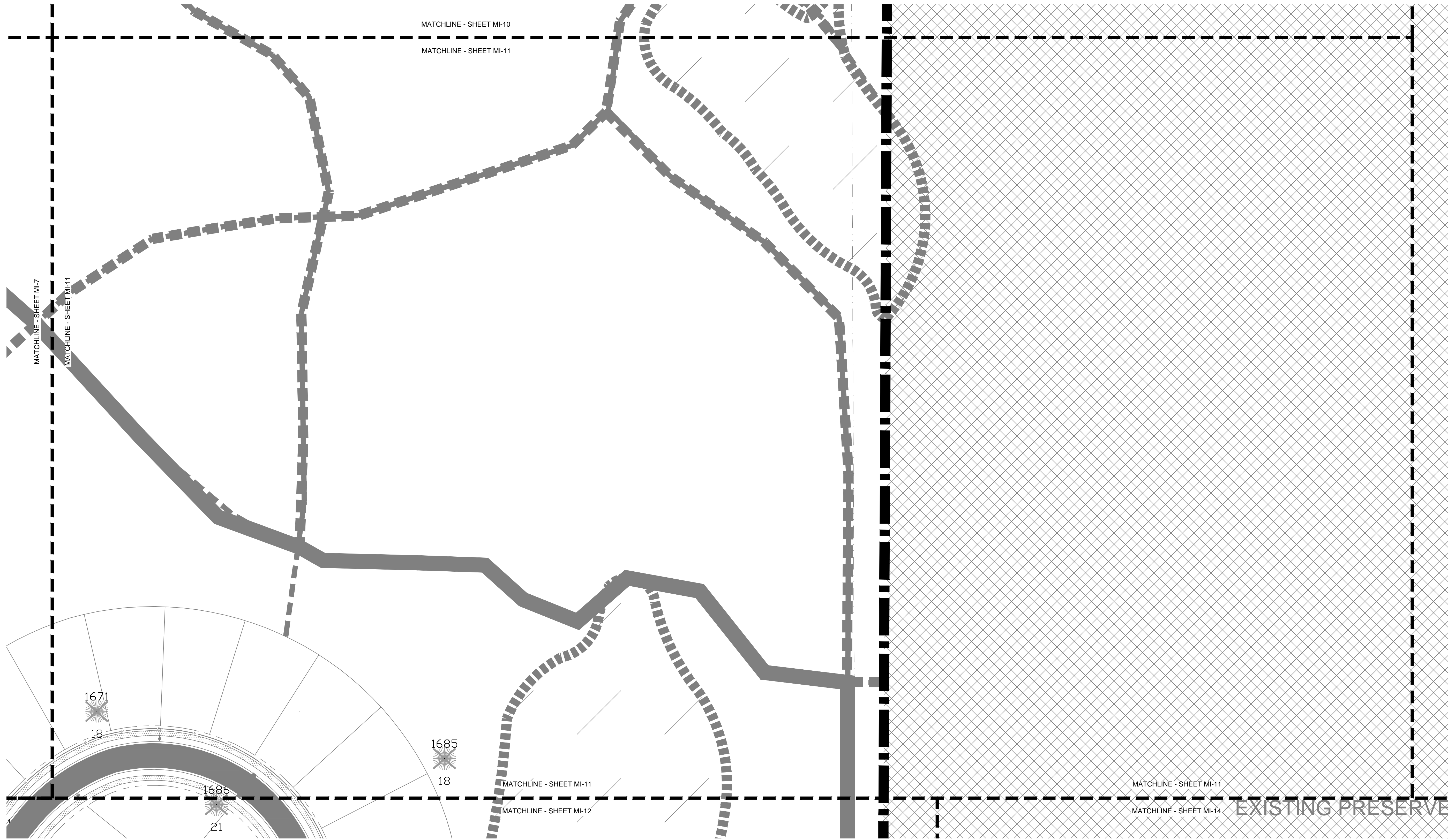
Mitigation Plan

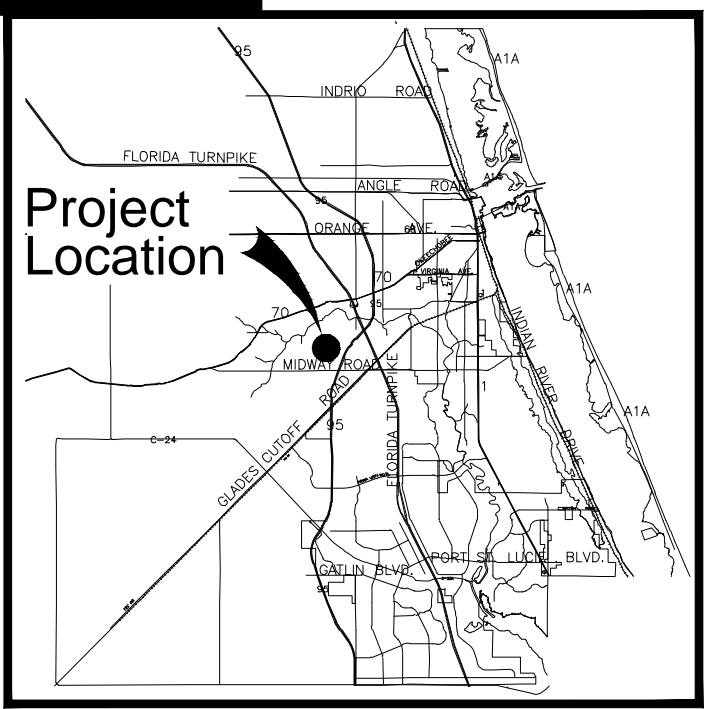
| Date | By | Description |
|------------|----|-------------------|
| 08.15.2024 | AC | Initial Submittal |
| | | |
| | | |
| | | |
| | | |
| | | |
| | | |
| | | |
| | | |



 SCALE: 1" = 50'
 0 25' 50' 100'
 REG. # LA6667114
 Steven Garrett

| | | |
|------------------|--|--------------|
| Designer | AC | Sheet |
| Manager | SG | MI-11 |
| Project Number | 22-405 | |
| Municipal Number | --- | |
| Computer File | 22-405 Sunrise Residential - Mitigation Plan.dwg | |

© Copyright Lucido & Associates. These documents and their contents are the property of Lucido & Associates. Any reproductions, revisions, modifications or use of these documents without the express written consent of Lucido & Associates is prohibited by law.





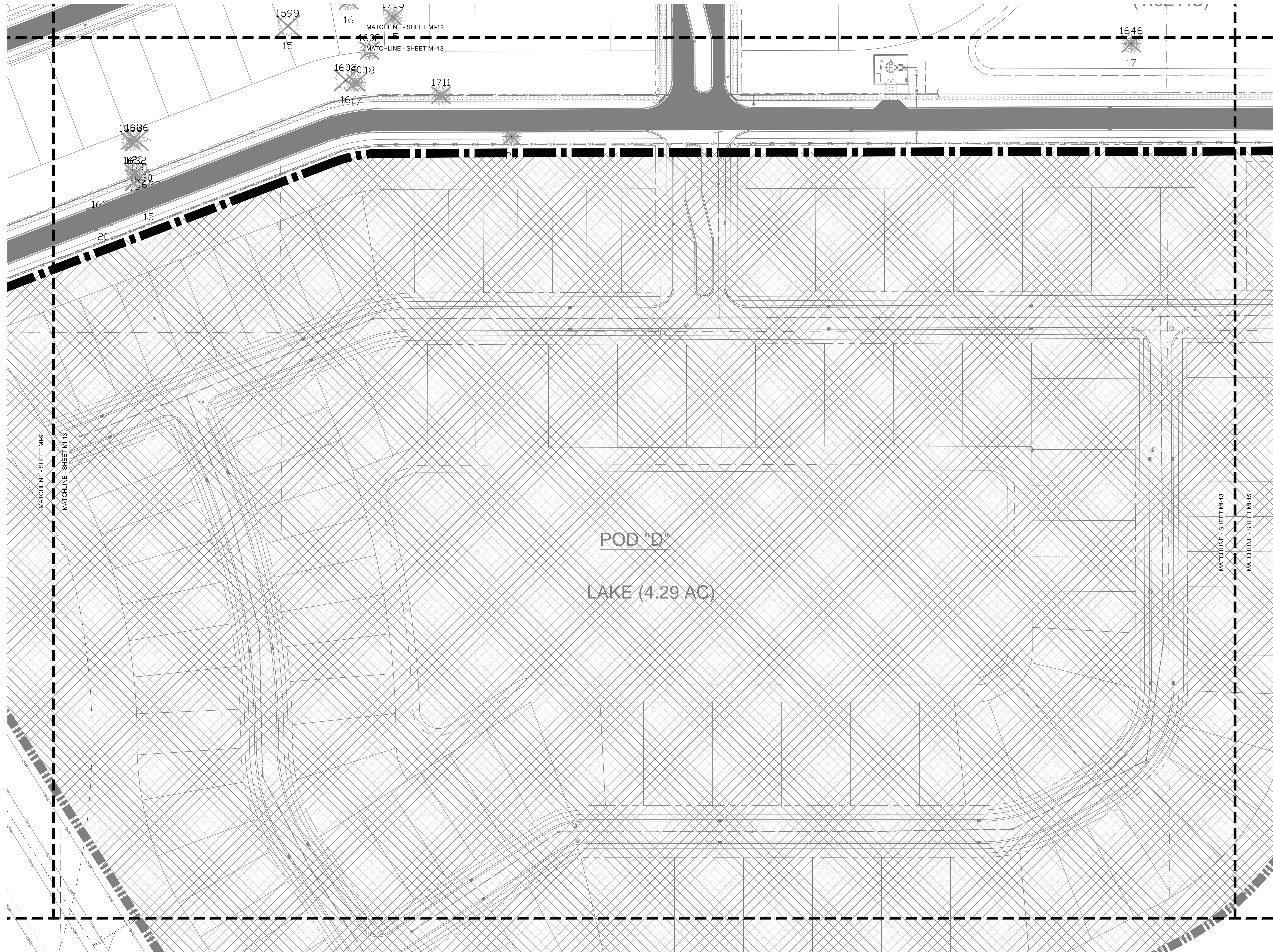
Project Team:

Client & Property Owner: Sunrise Residential, LLC
 200 E. Robinson St. Ste. 1120
 Orlando, Florida 32801

Land Planner / Landscape Architect: Lucido & Associates
 701 East Ocean Boulevard
 Stuart, Florida 34994

Engineer: Mills, Short & Associates
 700 22nd Place
 Vero Beach, Florida 32960

Surveyor: GSS Surveying and Mapping, LLC
 700 22nd Place, Ste. 2A
 Vero Beach, Florida 32960

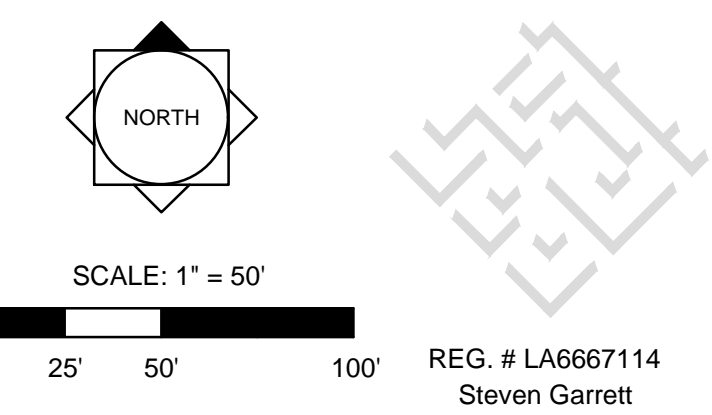


Sunrise PD Phase 1

City of Fort Pierce, Florida

Mitigation Plan

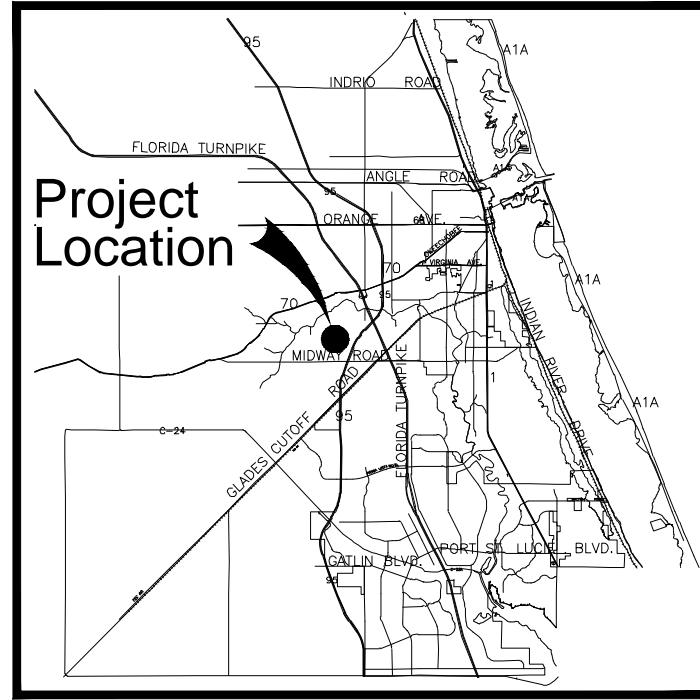
| Date | By | Description |
|------------|----|-------------------|
| 08.15.2024 | AC | Initial Submittal |
| | | |
| | | |
| | | |
| | | |
| | | |
| | | |
| | | |
| | | |



| | | |
|------------------|--|--------------|
| Designer | AC | Sheet |
| Manager | SG | MI-13 |
| Project Number | 22-405 | |
| Municipal Number | --- | |
| Computer File | 22-405 Sunrise Residential - Mitigation Plan.dwg | |

© Copyright Lucido & Associates. These documents and their contents are the property of Lucido & Associates. Any reproductions, revisions, modifications or use of these documents without the express written consent of Lucido & Associates is prohibited by law.

Key / Location:



Project Team:

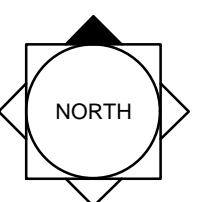
- Client & Property Owner:** Sunrise Residential, LLC
200 E. Robinson St. Ste. 1120
Orlando, Florida 32801
- Land Planner / Landscape Architect:** Lucido & Associates
701 East Ocean Boulevard
Stuart, Florida 34994
- Engineer:** Mills, Short & Associates
700 22nd Place
Vero Beach, Florida 32960
- Surveyor:** GSS Surveying and Mapping, LLC
700 22nd Place, Ste. 2A
Vero Beach, Florida 32960

Sunrise PD Phase 1

City of Fort Pierce, Florida

Mitigation Plan

| Date | By | Description |
|------------|----|-------------------|
| 08.15.2024 | AC | Initial Submittal |
| | | |
| | | |
| | | |
| | | |
| | | |
| | | |
| | | |

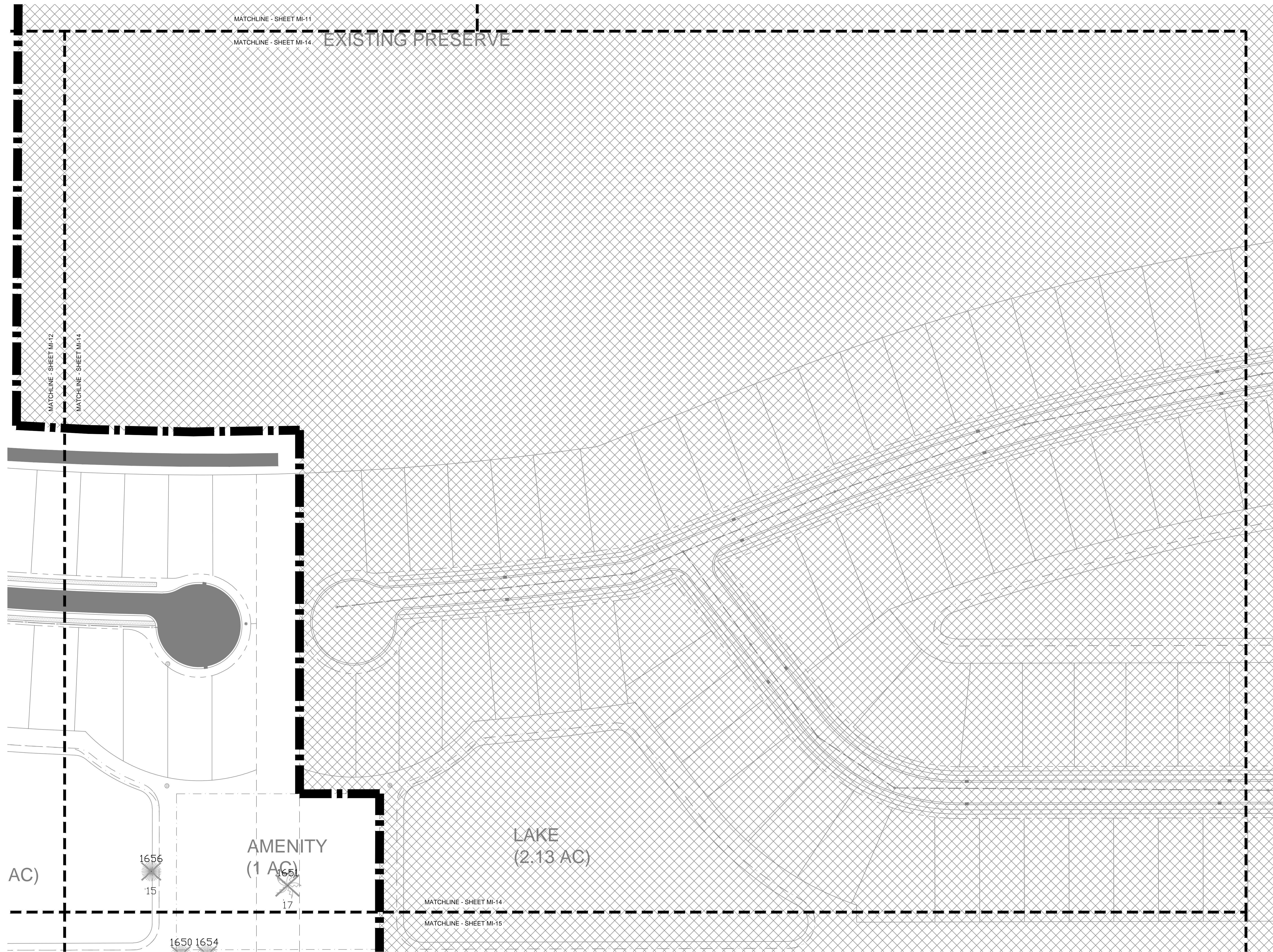


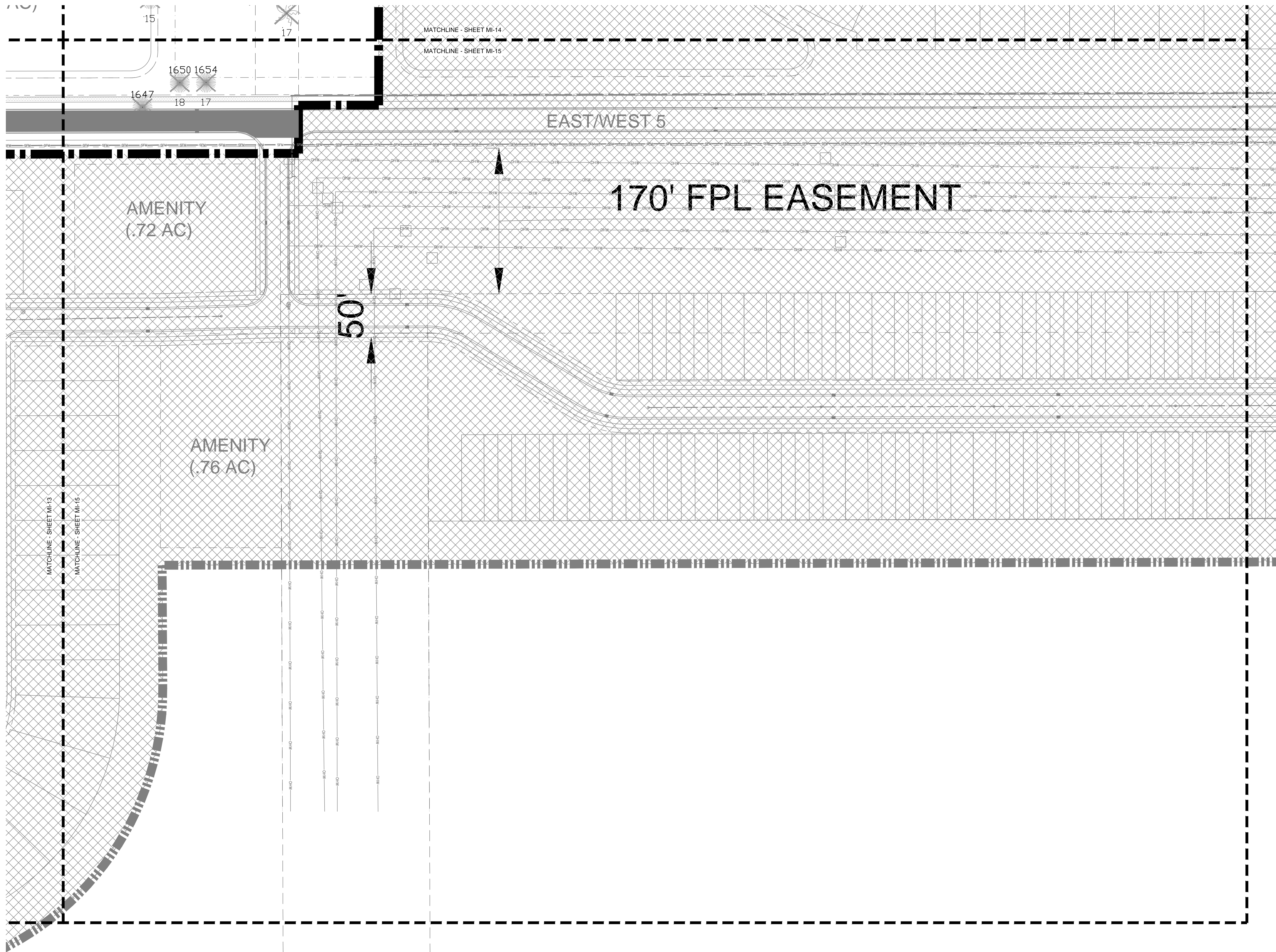
SCALE: 1" = 50'
 0 25' 50' 100'



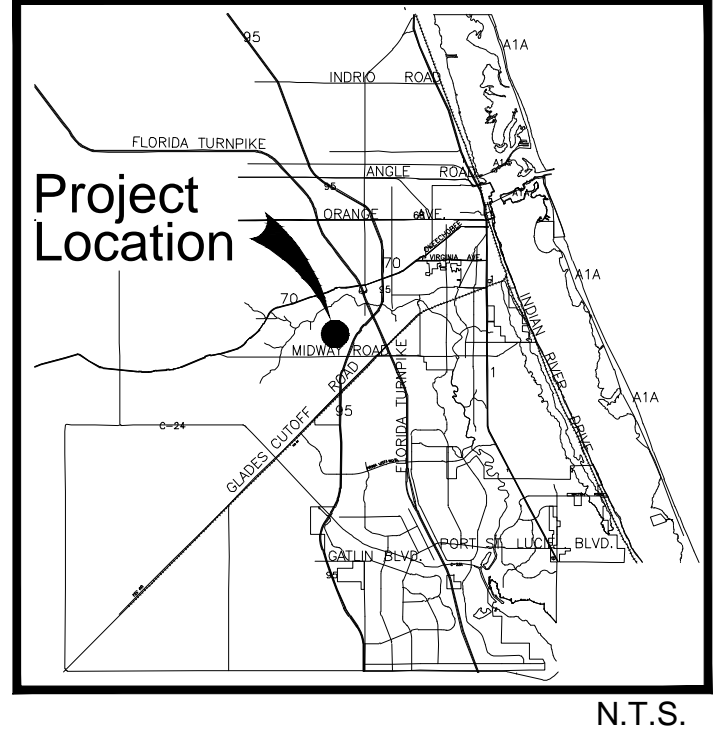
| | | |
|------------------|--|--------------|
| Designer | AC | Sheet |
| Manager | SG | MI-14 |
| Project Number | 22-405 | |
| Municipal Number | --- | |
| Computer File | 22-405 Sunrise Residential - Mitigation Plan.dwg | |

© Copyright Lucido & Associates. These documents and their contents are the property of Lucido & Associates. Any reproductions, revisions, modifications or use of these documents without the express written consent of Lucido & Associates is prohibited by law.





Key / Location:



Project Team:

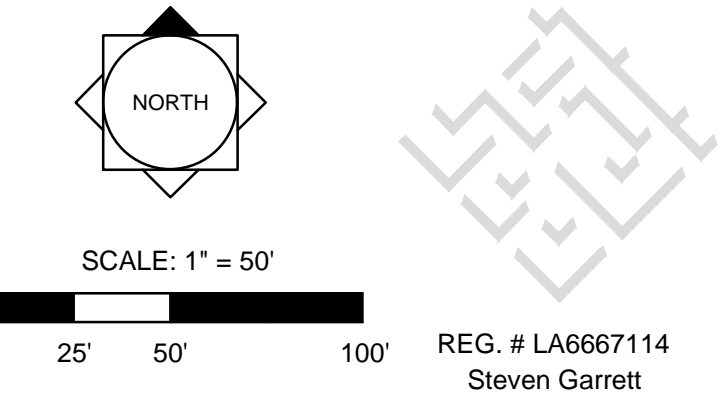
- Client & Property Owner:** Sunrise Residential, LLC
 200 E. Robinson St. Ste. 1120
 Orlando, Florida 32801
- Land Planner / Landscape Architect:** Lucido & Associates
 701 East Ocean Boulevard
 Stuart, Florida 34994
- Engineer:** Mills, Short & Associates
 700 22nd Place
 Vero Beach, Florida 32960
- Surveyor:** GSS Surveying and Mapping, LLC
 700 22nd Place, Ste. 2A
 Vero Beach, Florida 32960

**Sunrise PD
Phase 1**

City of Fort Pierce, Florida

Mitigation Plan

| Date | By | Description |
|------------|----|-------------------|
| 08.15.2024 | AC | Initial Submittal |
| | | |
| | | |
| | | |
| | | |
| | | |
| | | |
| | | |



| | | |
|------------------|--|--------------|
| Designer | AC | Sheet |
| Manager | SG | MI-15 |
| Project Number | 22-405 | |
| Municipal Number | --- | |
| Computer File | 22-405 Sunrise Residential - Mitigation Plan.dwg | |

© Copyright Lucido & Associates. These documents and their contents are the property of Lucido & Associates. Any reproductions, revisions, modifications or use of these documents without the express written consent of Lucido & Associates is prohibited by law.

