



St. Lucie Public Schools

Spring 2025



Board Member
Debbie Hawley



Board Member
Terissa Aronson



Board Chair
Dr. Donna Mills

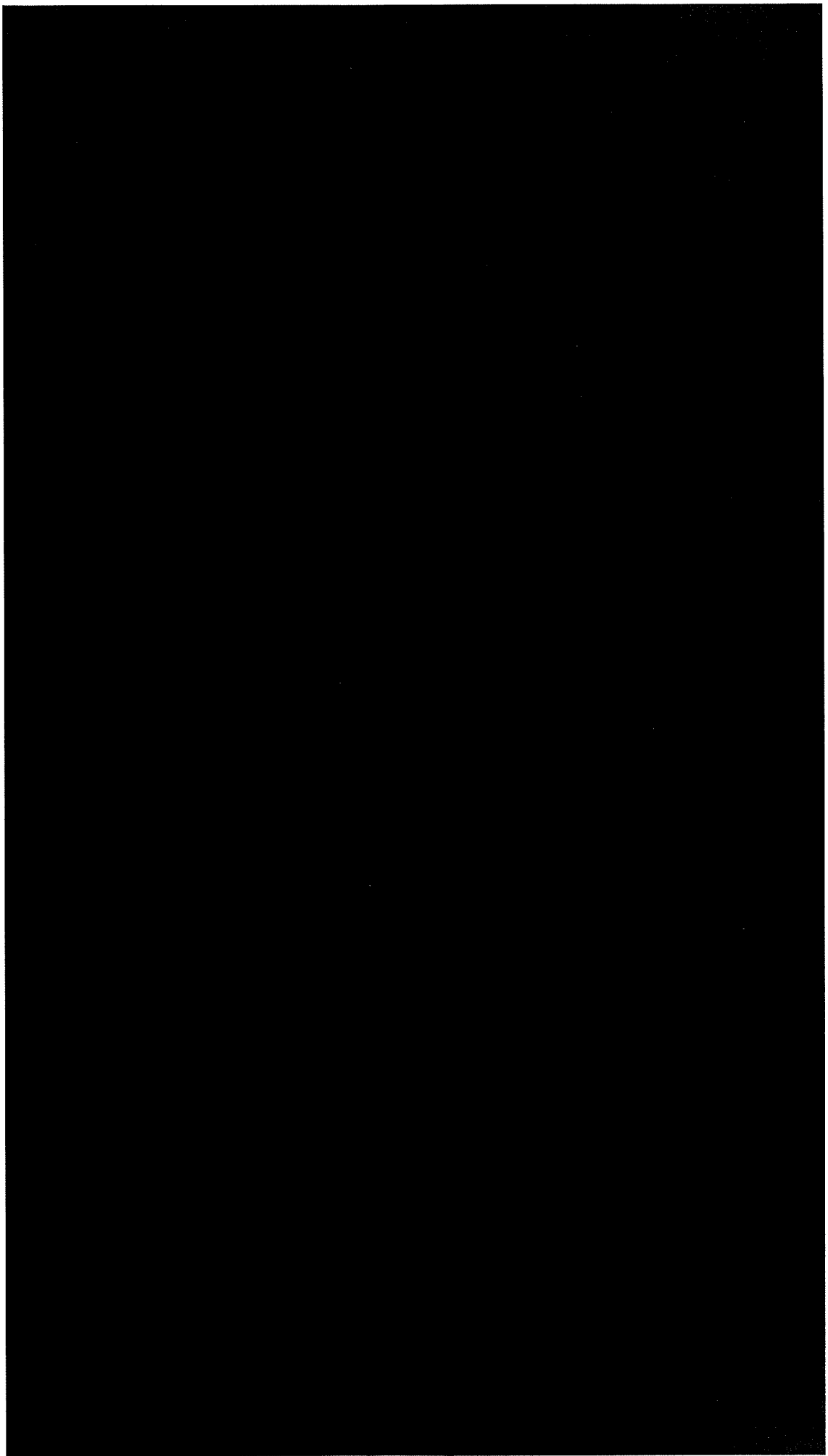


Board Member
Jennifer Richardson



Board Vice Chair
Troy Ingersoll

School Board of St. Lucie County

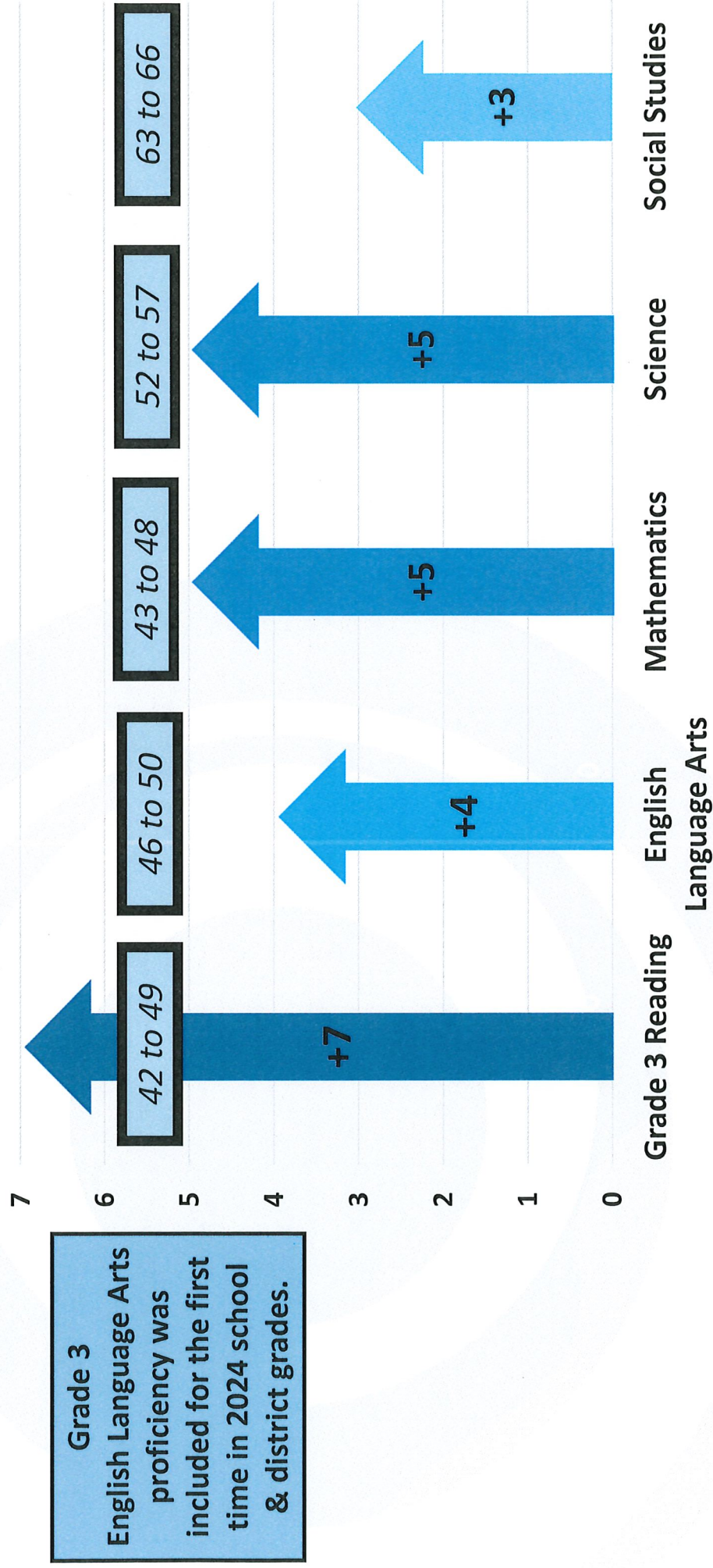


2024 Outcome Recap

SLPS Had a Historically Successful Year!

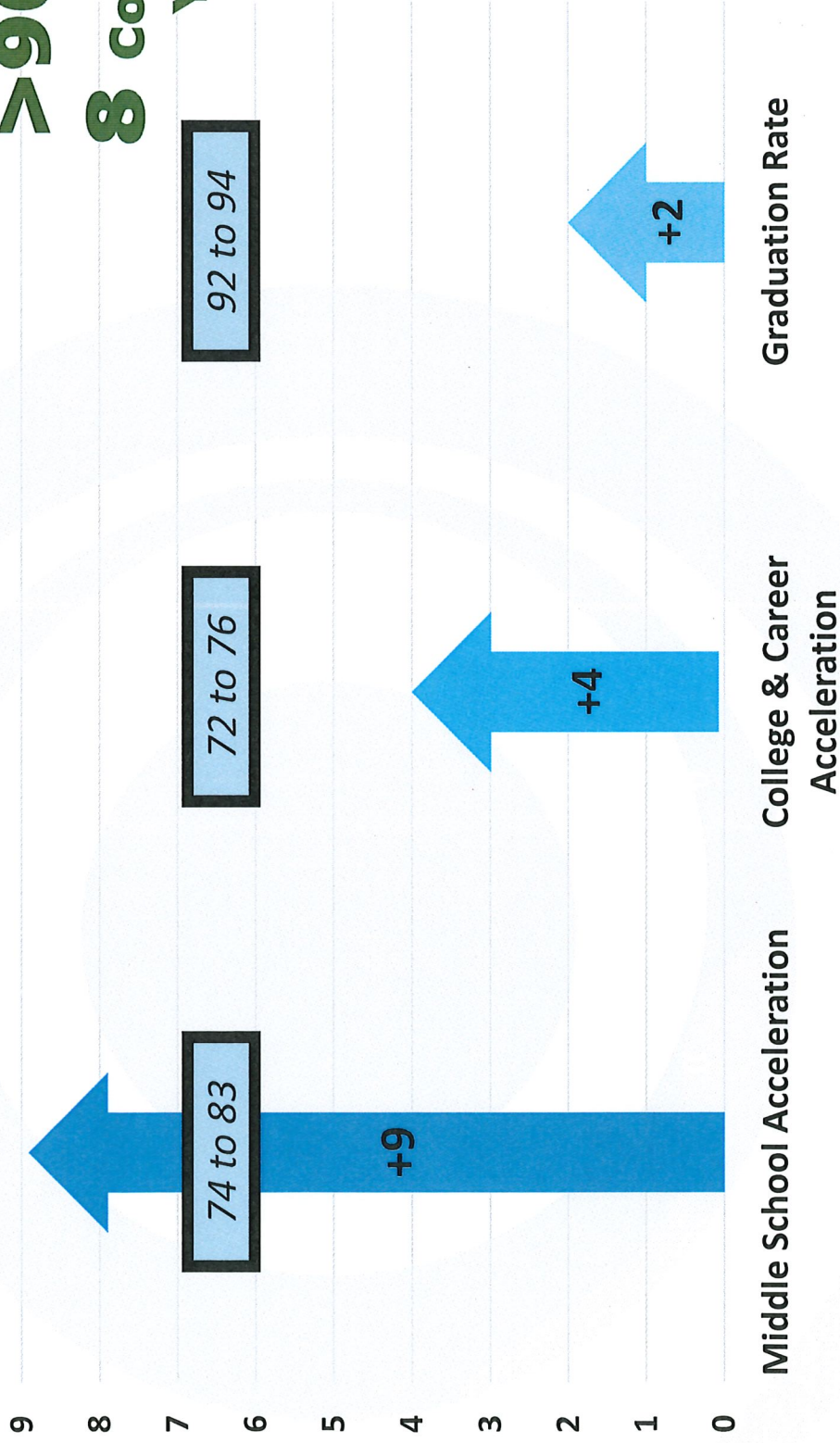


Improvements Across All Tested Areas 2023 vs 2024



Differences in Acceleration & Graduation 2022-23 to 2023-24

**>90% for
8 consecutive
Years**



Middle School Acceleration

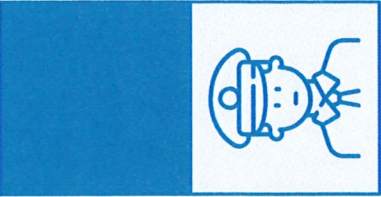
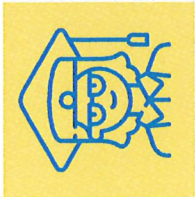
College & Career
Acceleration

Graduation Rate

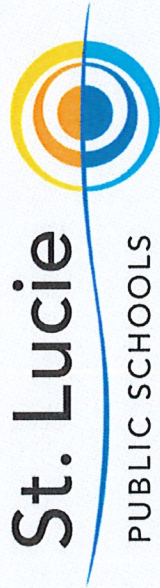
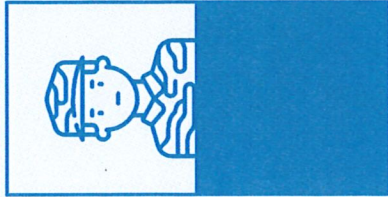
School Grades Over Time

SLPS Schools	2016	2017	2018	2019	2022	2023	2024
A	3	5	8	6	7	6	9
B	8	16	16	18	11	12	15
C	17	13	11	11	16	16	13
D	7	3	2	2	3	3	
F	2						

Charter Schools	2016	2017	2018	2019	2022	2023	2024
A	1	2	2	1	1	1	2
B	2	1	1	3	1	1	3
C	1	1	1		5	5	2
D							1
F							

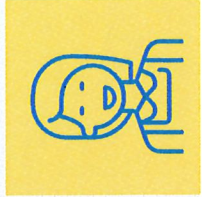


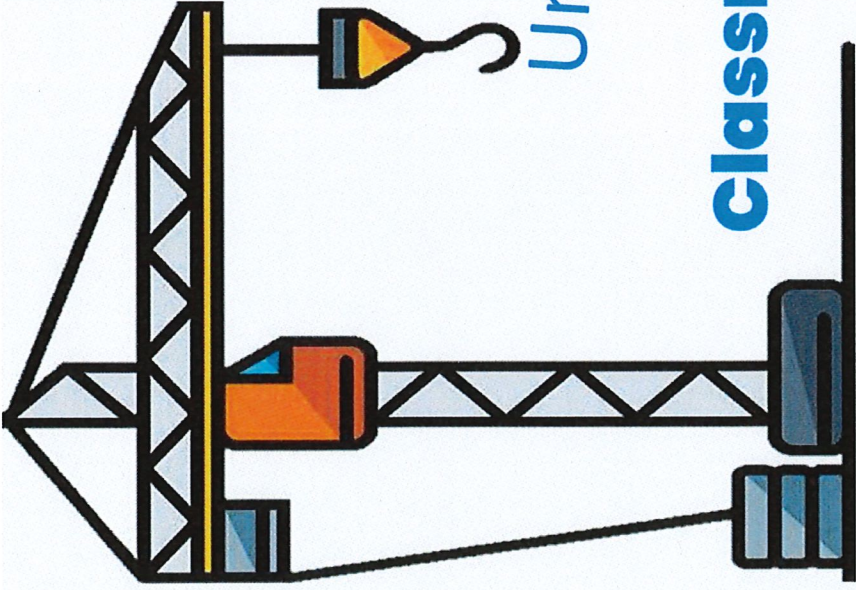
SLIPS Gets to Work



St. Lucie

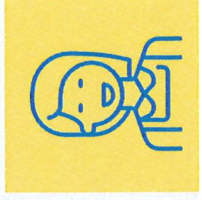
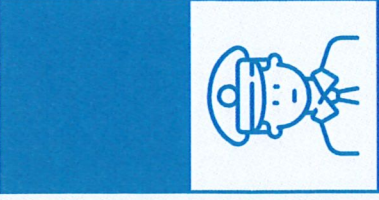
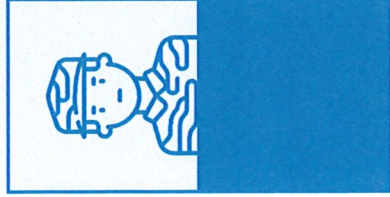
PUBLIC SCHOOLS

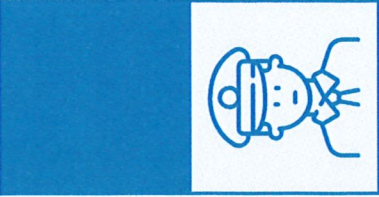
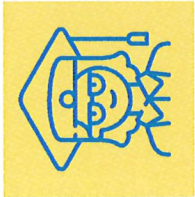




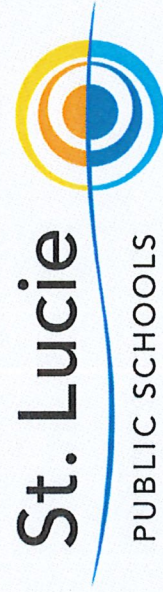
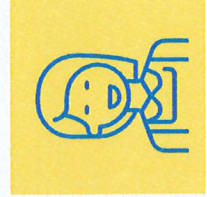
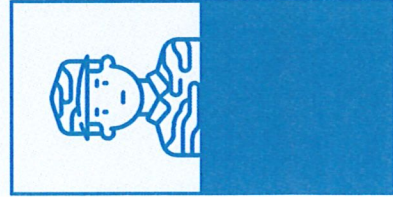
Under Construction

Classrooms  **careers**





What Ignites Career Interest in a Child?

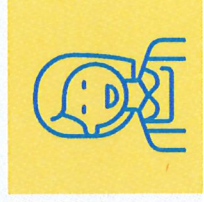
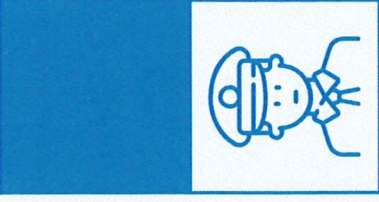
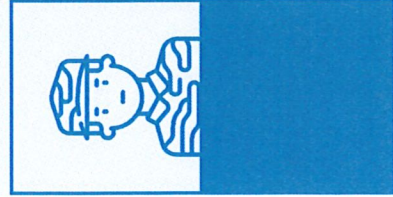


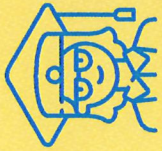


What Happens in St. Lucie Stays in St. Lucie



How Do We Build Better?





CTE: Industry Certification

3 Year Trend

21-22	22-23	23-24
2,054	3,404	4,313

+110%



St. Lucie



PUBLIC SCHOOLS

#1
RANKED DISTRICT ON THE TREASURE COAST
FOR COLLEGE & CAREER READINESS

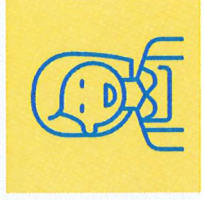
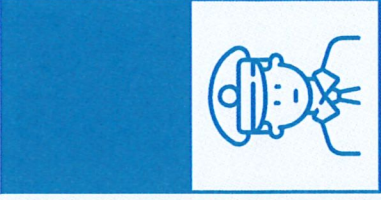
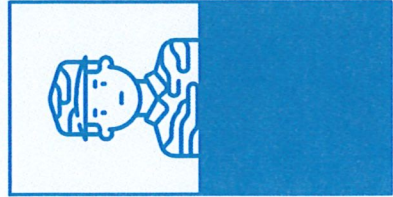
SLPS students are graduating with college credit and workforce ready credentials.

BENEFITS INCLUDE

- Qualified for high-skill jobs with lucrative income.
- Earning college credits before starting college - resulting time and cost savings
- Better prepared for rigorous college course work.
- Earning nationally-recognized industry certifications.



An Educated Workforce Benefits Everyone





Classrooms Careers



Awareness
Elementary School



Experience
High School



Exploration
Middle School

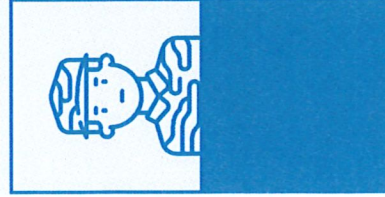
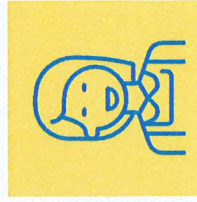
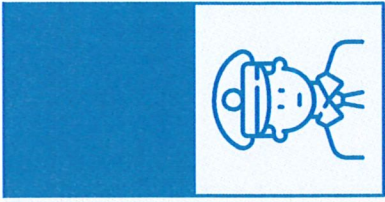


Graduation

**College
& Career**



**Thriving
St. Lucie
Community**



Classrooms careers

It isn't college
or career.
Career
readiness is
for everyone.

Goals-

- To Create a K-12 Career Readiness Pathway with intentionality.
- Create work-ready graduates to support the local economy.
- Prepare K-8 students for high school course pathways.
- Communicate what we do.
- Enhance EDC and business partnerships.



Play with a Purpose

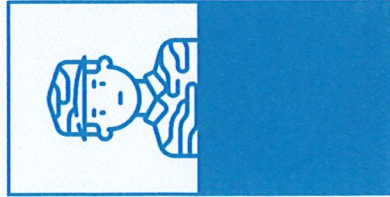
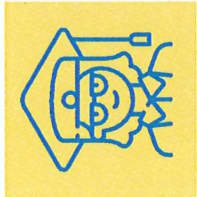
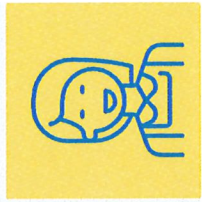
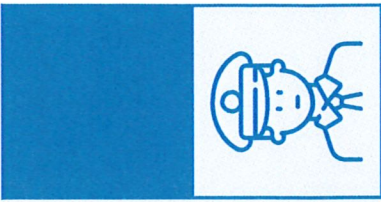
Kindergarten students rotate through 13 themes to learn about careers and vocabulary through playing. This program is teacher-led.

Veterinarian
Italian Restaurant
Camping and Fishing
Bakery
Farm to Table
Space Exploration

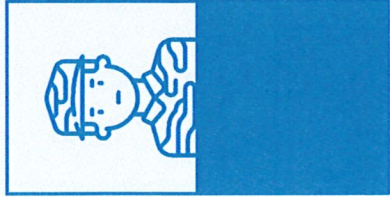
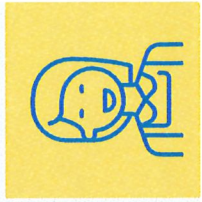
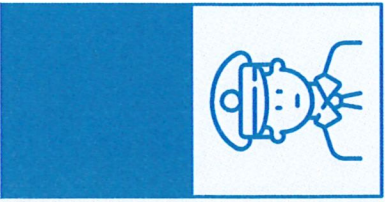
First Responders
Grocery Store
Caring for Babies
Airport
Science Lab
Aquarium



What is Xello?







Industrial-Organizational Psychologist



Excellent match

\$63,750 - \$168,300

Hide

Management Consultant



Excellent match

\$48,360 - \$152,760

Hide

Mental Health Nurse

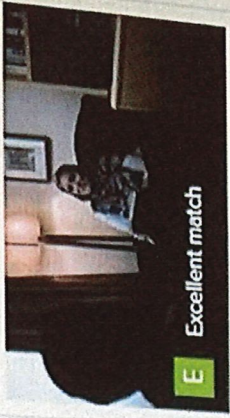


Excellent match

\$59,450 - \$120,250

Hide

Psychiatrist



Excellent match

\$50,000 - \$300,000

Hide

School Superintendent



Excellent match

\$75,000 - \$300,000

Hide

Naturopath



Excellent match

\$30,000 - \$100,000

Hide

Human Resources Specialist



Excellent match

\$37,680 - \$108,160

Hide

Social Worker



Excellent match

\$35,820 - \$86,820

Hide

Classrooms Careers

Build On Our Success

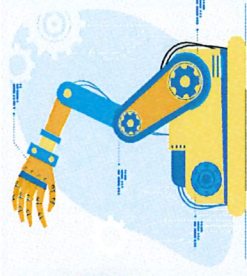
Additional Opportunities:

- K-12 Career and Leadership Pathways
- K-12 Xello Implementation
- 8th Grade Experience
- Career Coaching and Job Placement
- Capitalize on Kids At Hope Future Focus
- Expand Student Led Conferences
- Revitalize Freshmen Seminar Course
- Expand Counselor Bus Tours





CTE Programs



Legacy High School

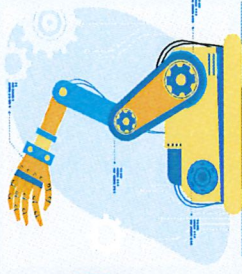
Allied Health Assisting
Dental Assisting
Biomedical Sciences
Global Logistics- Operations and Management
Exercise Science – Physical Therapy
Hospitality and Tourism

Treasure Coast High School

Advanced Manufacturing
Allied Health
Criminal Justice
Culinary Arts
Emergency Med. Responder
Engineering Technology
Global Logistics
Industrial Biotechnology
International Business
Nursing Assistant



CTE Programs



St. Lucie West Centennial High School

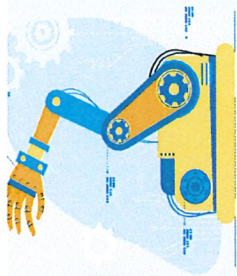
Aerospace Technology
Allied Health Assisting
Criminal Justice
Culinary Arts
Digital Design
Early Childhood
Game/Simulation/Animation
Nursing Assistant
Outboard Marine Technology
Principles of Teaching

Port St. Lucie High School

Allied Health Assisting
Automotive Maintenance
Biomedical Sciences
Building Construction Tech
Culinary Arts
Fashion Marketing
Nursing Assistant
Technical Design
TV Production Technology
Web Development



CTE Programs



Fort Pierce Central High School
Allied Health Assisting
Aerospace
Culinary Arts
Criminal Justice
Hospitality and Tourism
Automobile Maintenance & Light Repair
Marketing, Management and Entrepreneurial Principals
Nursing Assistant
Principles of Teaching
Web Development

Fort Pierce Westwood Academy
Animal Science and Services
Allied Health
Applied Robotics
Commercial Art Technology
Criminal Justice
Culinary Arts
Digital Media/Multimedia Design
Gaming, Simulation, Animation Programming
Health Unit Coordinator
Nursing Assistant
Pharmacy Technician
Technical Agriculture Operations
Veterinary Assistance

Lincoln Park Academy
Applied Cybersecurity
Digital Media/Multimedia Design
Pre-Engineering/Project Lead the Way
Technical Design
Allied Health



...



SLPS

Pre-apprenticeship Programs



Carpenter

Cook

Distribution Logistics Technician

Industrial Manufacturing

Marine Services Technician

Medical Assistant

Pharmacy Technician

Surgical Technician

Truss Design Technician

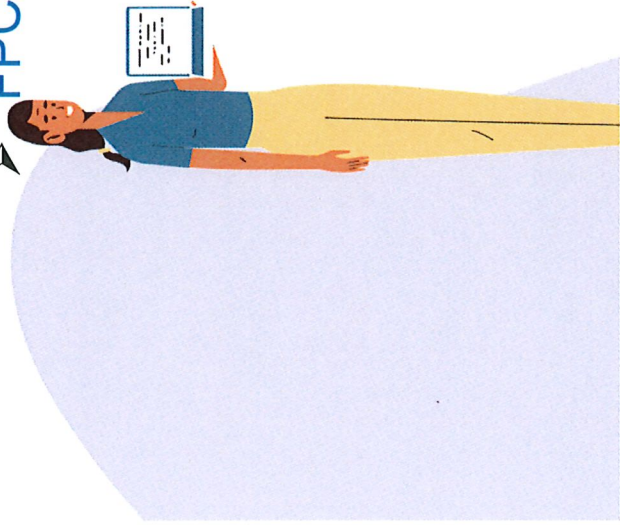
Welder Combination





Career Fairs in April

- **April 8th** South Career Fair at Mid Florida Center
 - PSLHS, MOSAIC, SLWCHS, and TCHS
- **April 22nd** North Career Fair at Fenn Center
 - FPCH, FPWA, LPA, and PBPA



- ❖ Juniors and Seniors must have completed the required Xello lessons, including a resume
- ❖ Have copies of their resume with them at the career fair (and be able to email them on the spot).

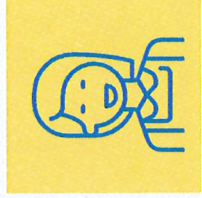
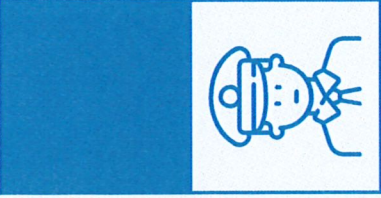
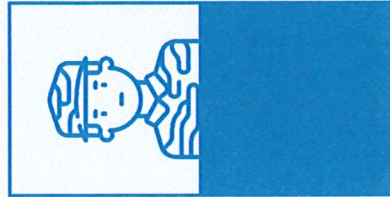


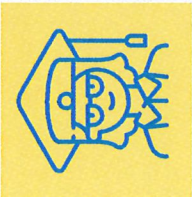


No Child Ever Rises to Low Expectations

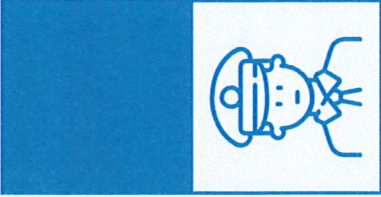


SLPS is Committed to Getting Our Students
Ready to Work for You

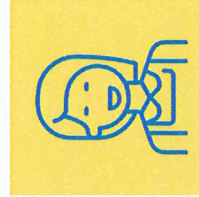
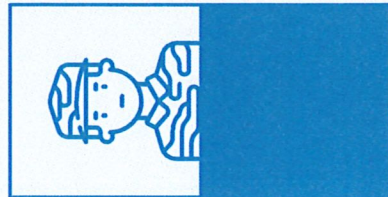




Classrooms careers



Coming Soon!



St. Lucie



PUBLIC SCHOOLS

Staying Ahead of Growth

*New Construction Update

New Tradition High School

OPENING FALL 2025

- 251,695 total square footage
- 1,957 student stations (1859 student capacity at 95%)
- 72 total classrooms (including labs and electives)
- 8 classrooms designated for labs
- 16 classrooms designated for electives/CTE
- 764 fixed seats plus 8 accessible seats in auditorium
- 1,332 number of bleacher seats in gym



New Fort Pierce Westwood Academy

OPENING JANUARY 2026

- 251,695 total square footage plus 9,900 square foot agricultural facility
- 1,957 student stations (1859 student capacity at 95%)
- 72 total classrooms (including labs and electives)
- 8 classrooms designated for labs
- 23 classrooms designated for electives/CTE
- 764 fixed seats plus 8 accessible seats in auditorium
- 1,332 number of bleacher seats in gym



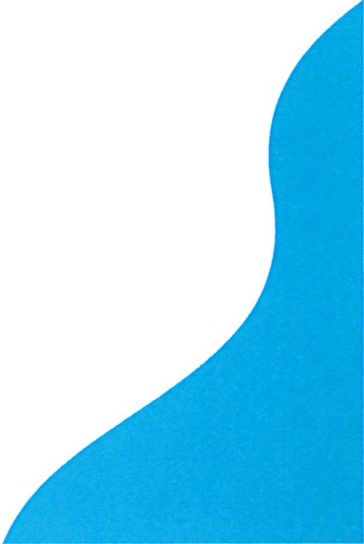
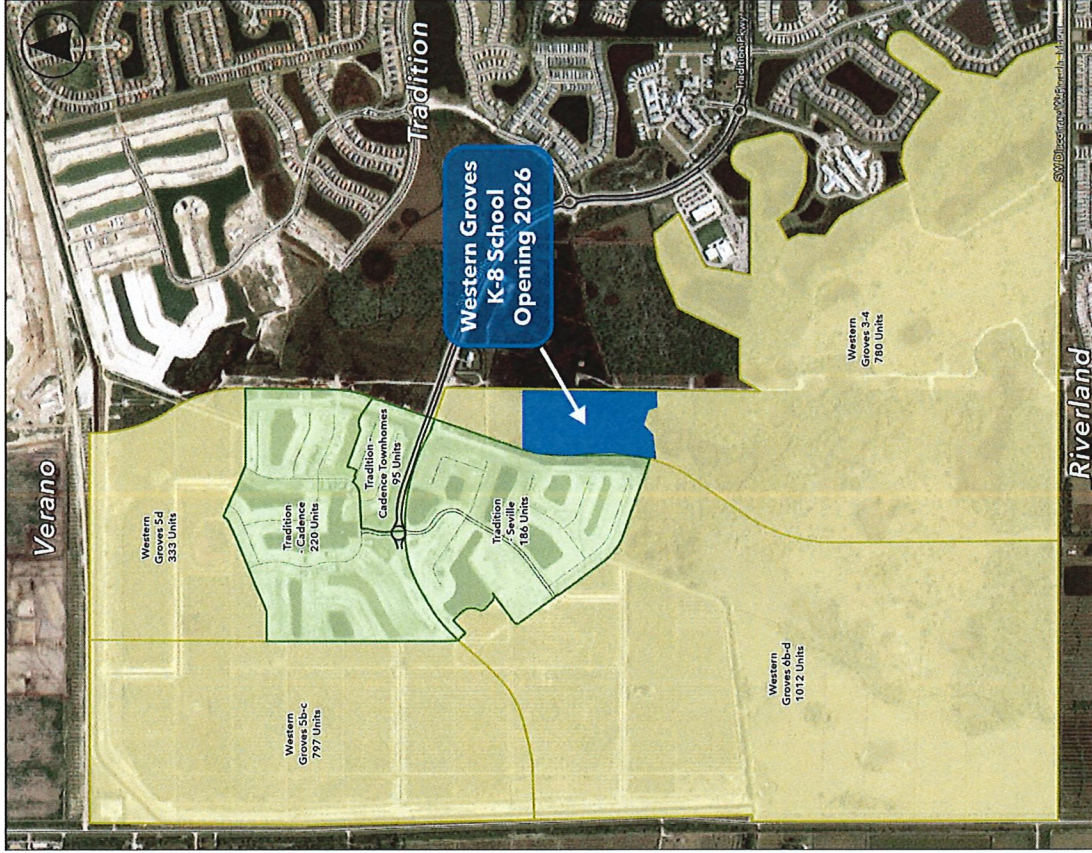
New K-8 Tradition

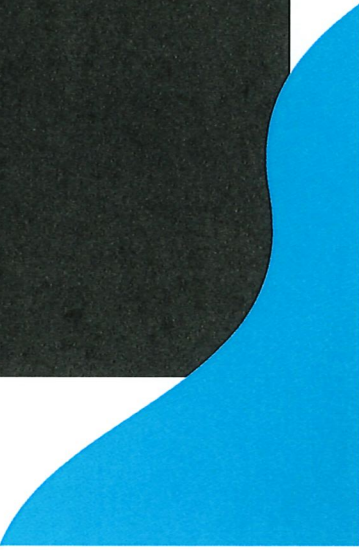
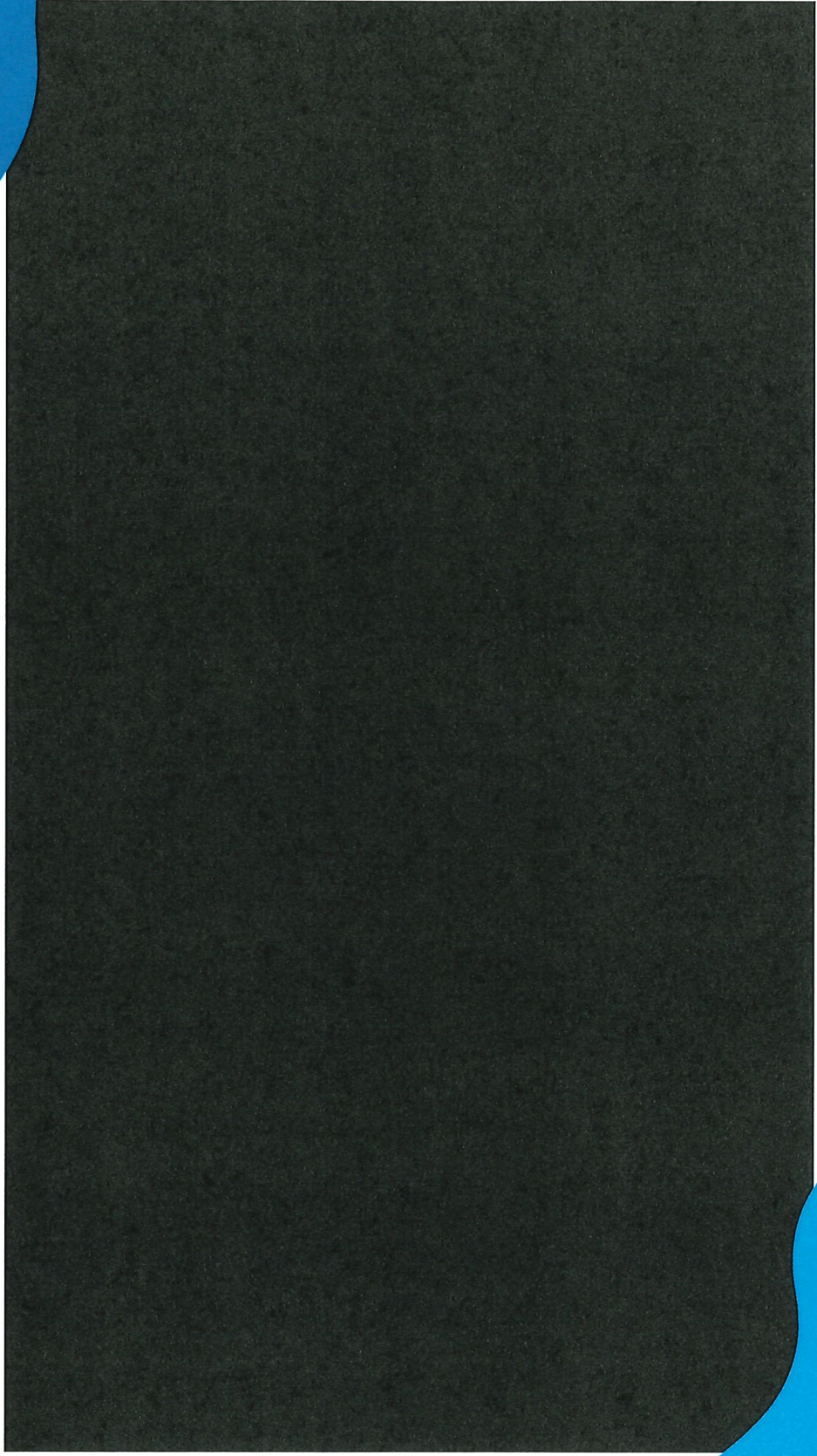
OPENING AUGUST 2026

- 204,993 total square footage
- 2,052 student stations (1710 student capacity at 90%)
- 95 total classrooms (including ESE and electives)
- 9 classrooms designated for ESE
- 16 classrooms designated for electives/labs
- 1,274 auditorium seating capacity in cafeteria
- 595 cafeteria seating capacity in cafeteria



Groundbreaking Ceremony
March 25, 2025
9 AM
(Followed by a tour of
Legacy/Westwood)





FOLLOW US ON THESE PLATFORMS



WWW.STLUCIESCHOOLS.ORG

