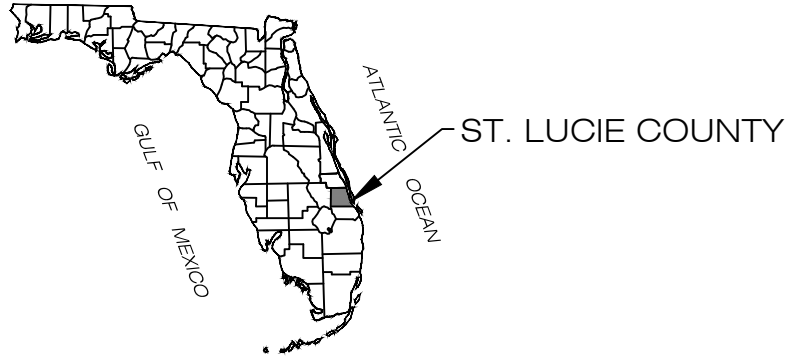


ST. LUCIE COUNTY ANCHORAGE LIMITATION AREAS IN ST. LUCIE COUNTY, FLORIDA

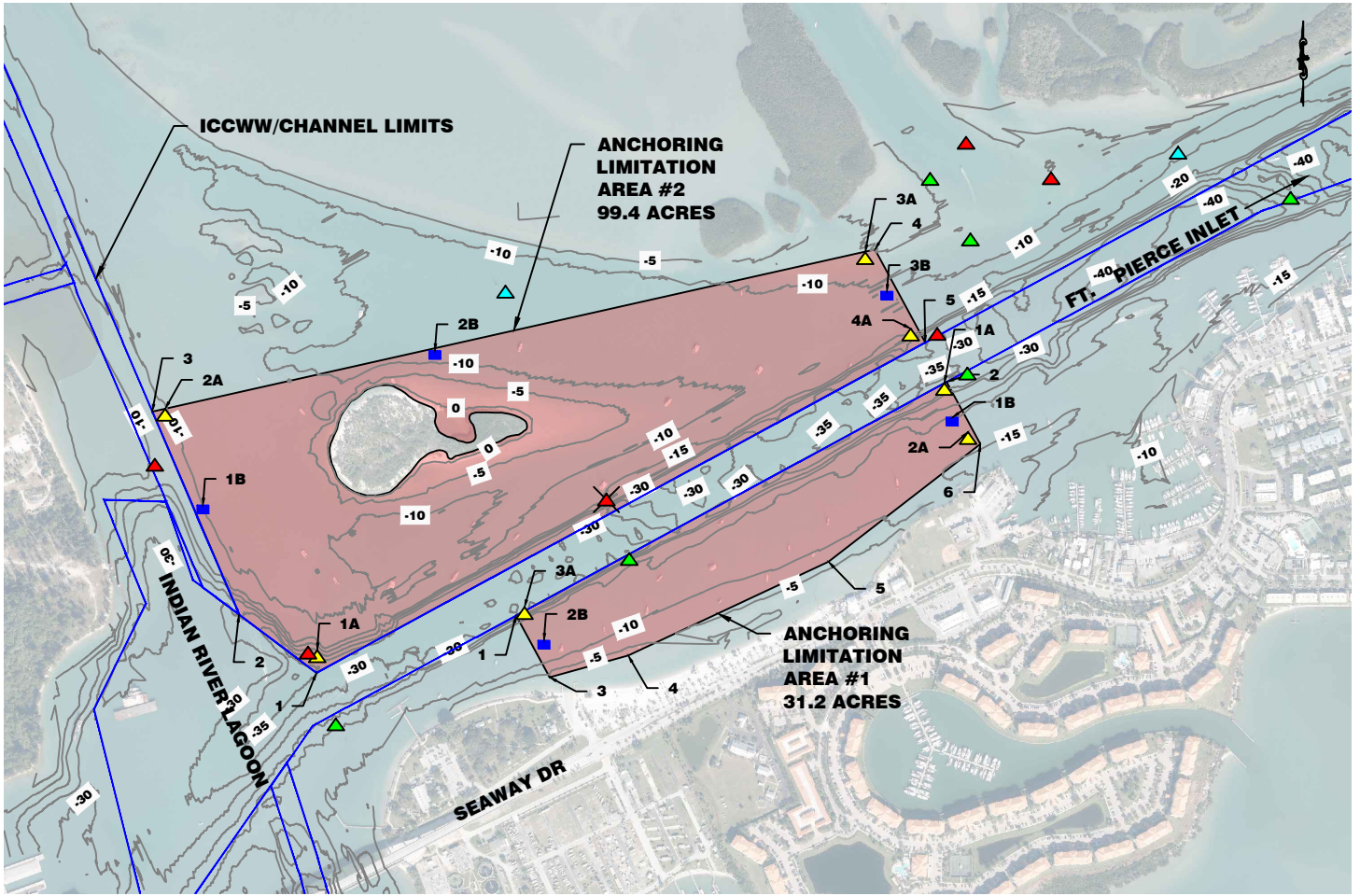


SHEET LIST TABLE

SHEET NUMBER	SHEET TITLE
1	COVER SHEET
2	PLAN VIEW - POTENTIAL ANCHORING LIMITATION AREA
3	TABLES
4	SINGLE PILE SIGN DETAIL
5	MOORING BUOY DETAIL

CHARLES T. FONTAINE III, P.E. DATE
FLORIDA P.E. LICENSE NUMBER 73042

COASTAL TECH <small>Certificate of Authorization Number: 00004195 3625 20th Street, Vero Beach, Florida 32960 Ph. (772)-562-8580</small>	COVER SHEET	ENGR CTF	DRAWN AQN	SHEET 1
	ST. LUCIE COUNTY ANCHORING LIMITATION AREAS IN ST. LUCIE COUNTY, FLORIDA	LAST REVISION	DATE 04/14/2025	JOB NO. 1018201.014

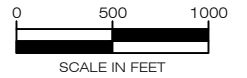


NOTES:

1. AERIAL IMAGE FROM FLORIDA DEPARTMENT OF TRANSPORTATION DATED 2023.
2. CONTOURS FROM A SURVEY BY MORGAN & EKLUND TITLED "BATHYMETRIC SURVEY FORT PIERCE INLET - INTERIOR SEABED ST. LUCIE COUNTY, FLORIDA" AND DATED SEPTEMBER 28, 2023.

LEGEND:

- ANCHORING LIMITATION AREA
- ICCW/CHANNEL LIMITS
- 10 CONTOURS
- SIGN
- BUOY
- EXISTING AIDS TO NAVIGATION (ATON)
- EXISTING AIDS TO NAVIGATION (ATON) RANGE LIGHT



CHARLES T. FONTAINE III, P.E. DATE
 FLORIDA P.E. LICENSE NUMBER 73042



Certificate of Authorization Number: 00004195
 3625 20th Street, Vero Beach, Florida 32960
 Ph. (772)-562-8580

PLAN VIEW - POTENTIAL ANCHORING LIMITATION AREAS

ST. LUCIE COUNTY ANCHORING LIMITATION AREAS
 IN
 ST. LUCIE COUNTY, FLORIDA

ENGR
 CTF

LAST REVISION

DRAWN
 AQN

DATE

04/14/2025

SHEET 2
 OF 5 SHEETS

JOB NO.

1018201.014

ANCHORING LIMITATION AREA 1 COORDINATE TABLE				
POINT NUMBER	NORTHING	EASTING	LATITUDE	LONGITUDE
1	1137865.4	878327.84	N027° 27' 44"	W080° 18' 53"
2	1139168.61	880732.21	N027° 27' 57"	W080° 18' 26"
3	1137520.69	878516.57	N027° 27' 41"	W080° 18' 51"
4	1137641.98	878955.24	N027° 27' 42"	W080° 18' 46"
5	1138165.42	880072.42	N027° 27' 47"	W080° 18' 34"
6	1138822.1	880920.18	N027° 27' 53"	W080° 18' 24"

SIGN AND BUOY AREA 1 COORDINATE TABLE				
MARKER ID	LATITUDE	LONGITUDE	MOUNTING	SIGN DIRECTION
1A	N027° 27' 56"	W080° 18' 27"	BUOY	BUOY
2A	N027° 27' 54"	W080° 18' 25"	BUOY	BUOY
3A	N027° 27' 44"	W080° 18' 53"	BUOY	BUOY
1B	N027° 27' 55"	W080° 18' 26"	SIGN PILE	EAST
2B	N027° 27' 42"	W080° 18' 51"	SIGN PILE	WEST

ANCHORING LIMITATION AREA 2 COORDINATE TABLE				
POINT NUMBER	NORTHING	EASTING	LATITUDE	LONGITUDE
1	1137545.36	877215.12	N027° 27' 41"	W080° 19' 06"
2	1137870.41	876783.25	N027° 27' 44"	W080° 19' 10"
3	1139003.34	876299.09	N027° 27' 55"	W080° 19' 16"
4	1139907.33	880331.58	N027° 28' 04"	W080° 18' 31"
5	1139388.42	880613.07	N027° 27' 59"	W080° 18' 28"

SIGN AND BUOY AREA 2 COORDINATE TABLE				
MARKER ID	LATITUDE	LONGITUDE	MOUNTING	SIGN DIRECTION
1A	N027° 27' 42"	W080° 19' 06"	BUOY	BUOY
2A	N027° 27' 55"	W080° 19' 15"	BUOY	BUOY
3A	N027° 28' 04"	W080° 18' 31"	BUOY	BUOY
4A	N027° 27' 59"	W080° 18' 29"	BUOY	BUOY
1B	N027° 27' 50"	W080° 19' 13"	SIGN PILE	WEST
2B	N027° 27' 58"	W080° 18' 58"	SIGN PILE	NORTH
3B	N027° 28' 02"	W080° 18' 30"	SIGN PILE	EAST

CHARLES T. FONTAINE III, P.E. DATE
FLORIDA P.E. LICENSE NUMBER 73042



Certificate of Authorization Number: 00004195
3625 20th Street, Vero Beach, Florida 32960
Ph. (772)-562-8580

TABLES

ST. LUCIE COUNTY ANCHORING LIMITATION AREAS
IN
ST. LUCIE COUNTY, FLORIDA

ENGR

CTF

LAST REVISION

DRAWN

AQN

DATE

04/14/2025

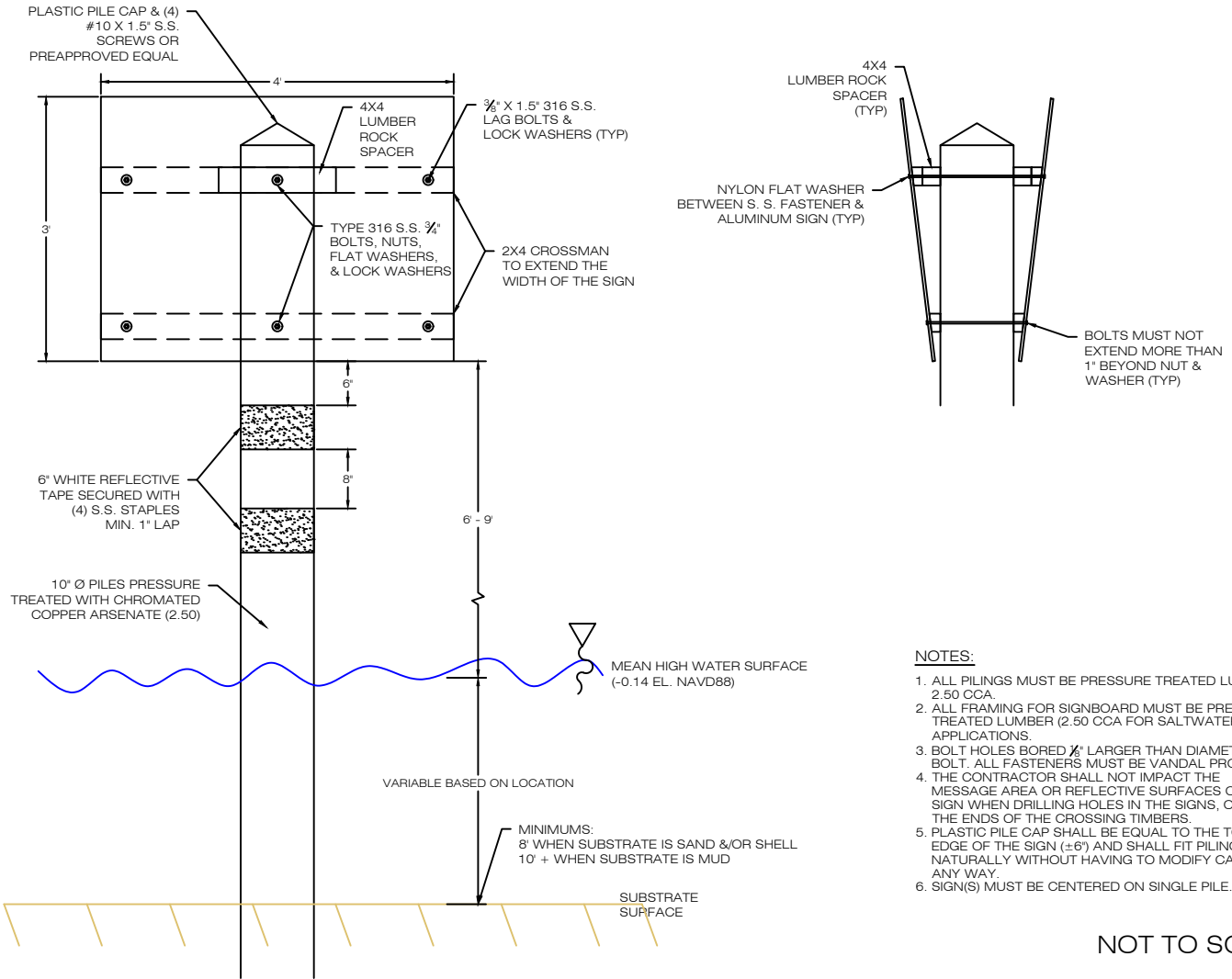
SHEET

3

OF 5 SHEETS

JOB NO.

1018201.014



NOTES:

1. ALL PILINGS MUST BE PRESSURE TREATED LUMBER 2.50 CCA.
2. ALL FRAMING FOR SIGNBOARD MUST BE PRESSURE TREATED LUMBER (2.50 CCA FOR SALTWATER APPLICATIONS).
3. BOLT HOLES BORED $\frac{1}{8}$ " LARGER THAN DIAMETER OF BOLT. ALL FASTENERS MUST BE VANDAL PROOFED.
4. THE CONTRACTOR SHALL NOT IMPACT THE MESSAGE AREA OR REFLECTIVE SURFACES OF THE SIGN WHEN DRILLING HOLES IN THE SIGNS, OR SPLIT THE ENDS OF THE CROSSING TIMBERS.
5. PLASTIC PILE CAP SHALL BE EQUAL TO THE TOP EDGE OF THE SIGN (± 6 ") AND SHALL FIT PILING NATURALLY WITHOUT HAVING TO MODIFY CAP IN ANY WAY.
6. SIGN(S) MUST BE CENTERED ON SINGLE PILE.

NOT TO SCALE

THIS AREA HAS BEEN DESIGNATED AS AN "ANCHORING LIMITATION AREA" OR "ALA"

IN ACCORDANCE WITH STATE STATUTE 327.4108 AND COUNTY ORDINANCE XXXXXXXX, YOU CANNOT ANCHOR A VESSEL WITHIN AN ALA FOR MORE THAN 45 CONSECUTIVE DAYS IN A 180 DAY PERIOD. VIOLATIONS CAN RESULT IN FINES UP TO \$500 AND / OR IMPOUNDING OF VESSEL

CHARLES T. FONTAINE III, P.E. DATE
FLORIDA P.E. LICENSE NUMBER 73042

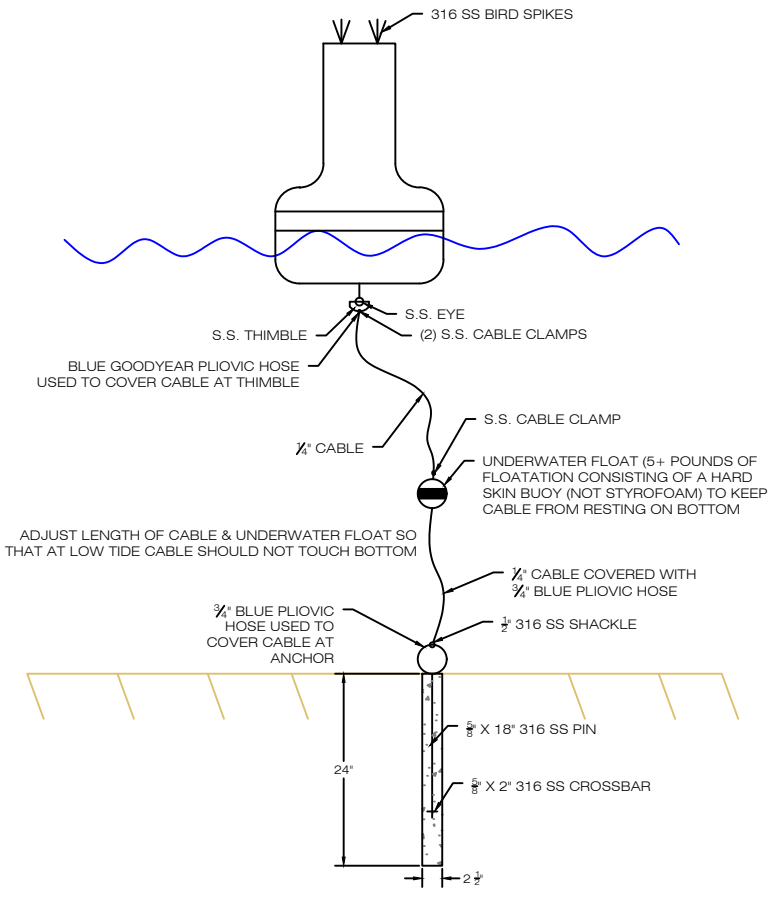


Certificate of Authorization Number: 00004195
3625 20th Street, Vero Beach, Florida 32960
Ph. (772)-562-8580

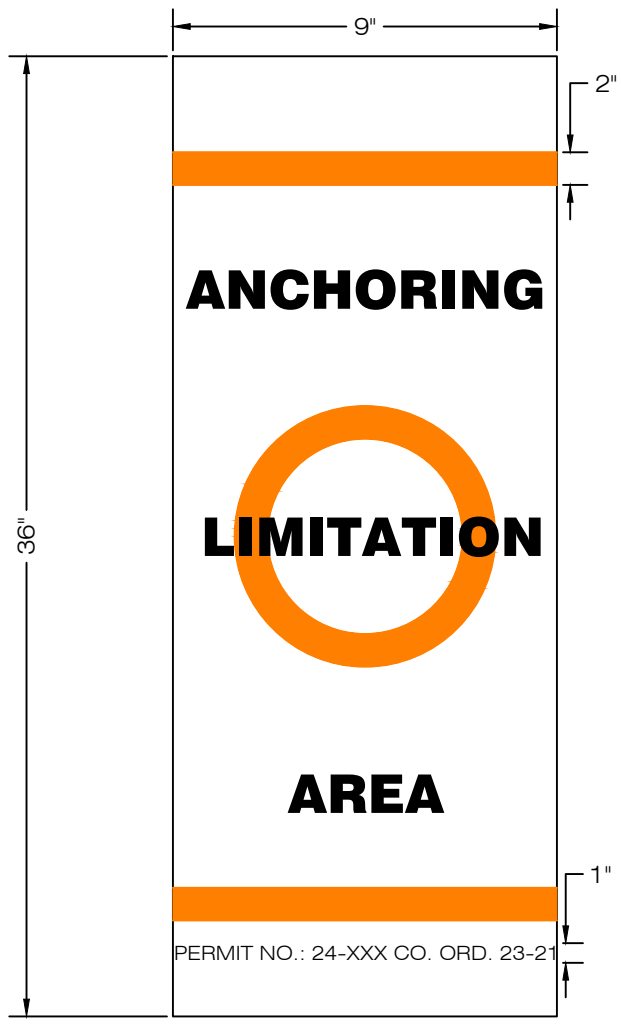
SINGLE PILE SIGN DETAIL

ST. LUCIE COUNTY ANCHORING LIMITATION AREAS
IN
ST. LUCIE COUNTY, FLORIDA


ENGR CTF	DRAWN AQN	SHEET 4
LAST REVISION	DATE 04/14/2025	OF 5 SHEETS JOB NO. 1018201.014



NOT TO SCALE



CHARLES T. FONTAINE III, P.E. DATE
 FLORIDA P.E. LICENSE NUMBER 73042

 Certificate of Authorization Number: 00004195 3625 20th Street, Vero Beach, Florida 32960 Ph. (772)-562-8580	MOORING BUOY DETAIL		ENGR CTF	DRAWN AQN	SHEET 5 OF 5 SHEETS
	ST. LUCIE COUNTY ANCHORING LIMITATION AREAS IN ST. LUCIE COUNTY, FLORIDA		LAST REVISION	DATE 04/14/2025	JOB NO. 1018201.014