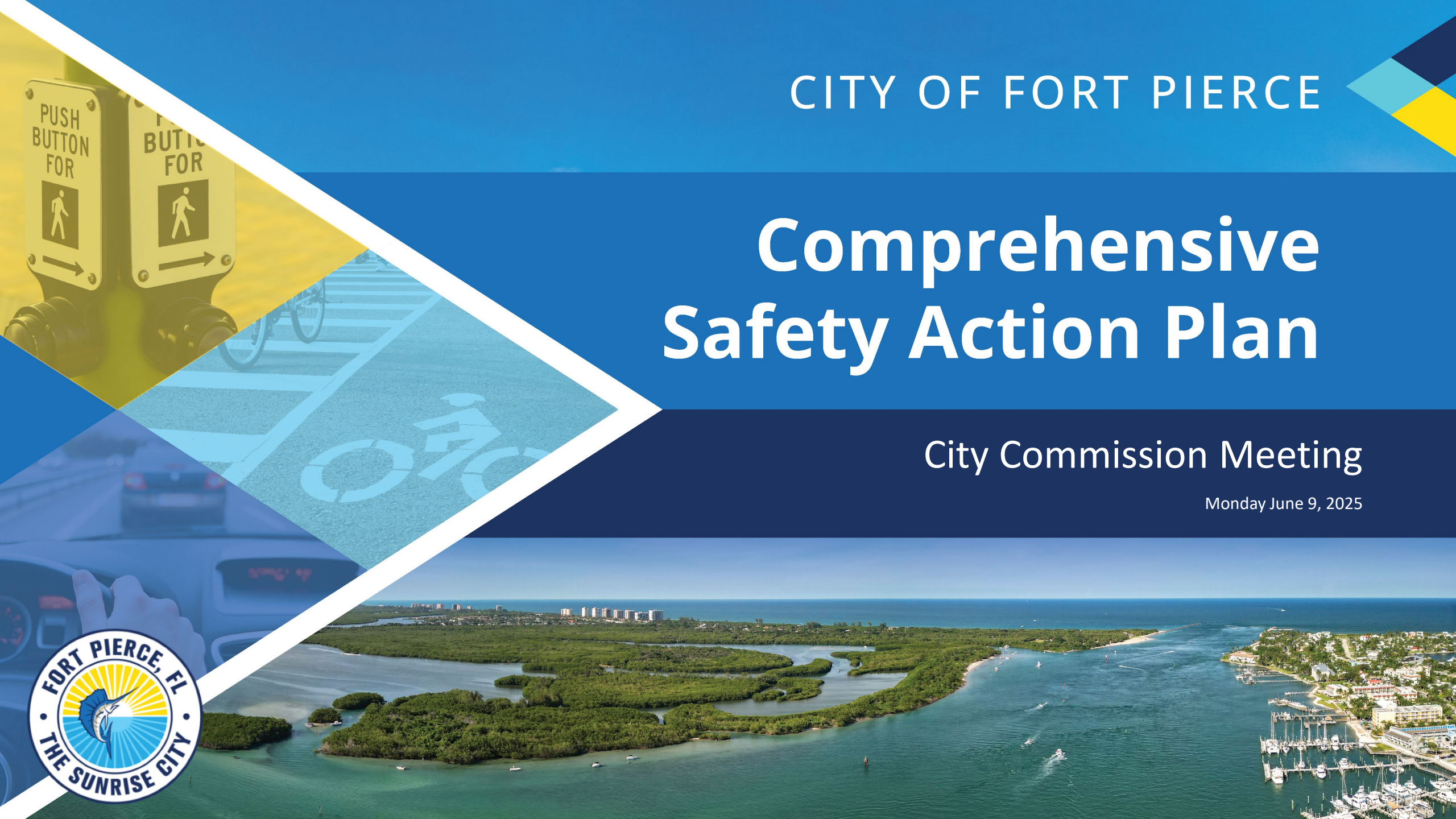


CITY OF FORT PIERCE

Comprehensive Safety Action Plan

City Commission Meeting

Monday June 9, 2025



START CROSSING
Watch For
Vehicles

DON'T START
Finish Crossing
If Started

TIME REMAINING
To Finish Crossing

DON'T CROSS

PUSH BUTTON
TO CROSS

US 1



Virginia Ave

West St. Louis Street



10TH ST

SPEED LIMIT 20

DECLARADO

Safe Streets and Roads for All (SS4A)

- Federal discretionary program with \$5 billion in appropriated funds over 5 years, 2022-2026
- Supports the U.S. Department of Transportation's National Roadway Safety Strategy and goal of zero roadway deaths using a Safe System Approach
- Special emphasis on vulnerable road users and equity

Comprehensive Safety Action Plan Elements

- A Safety Action Plan is aimed at preventing and significantly reducing roadway fatalities and serious injuries for all users
- Includes elements such as:
 - Leadership Commitment and Goal Setting
 - Safety Analysis
 - Engagement and Collaboration
 - Equity Considerations
 - Policy and Process Changes
 - Project Identification

S | S
4 | A

Safe Streets and Roads for All Action Plan Components

This document is not meant to replace the NOFO. Applicants should follow the instructions in the NOFO to correctly apply for a grant. See the SS4A website for more information: <https://www.transportation.gov/SS4A>

Leadership Commitment and Goal Setting

An official public commitment (e.g., resolution, policy, ordinance, etc.) by a high-ranking official and/or governing body (e.g., Mayor, City Council, Tribal Council, MPO Policy Board, etc.) to an eventual goal of zero roadway fatalities and serious injuries. The commitment must include a goal and timeline for eliminating roadway fatalities and serious injuries achieved through one, or both, of the following:

- (1) the target date for achieving zero roadway fatalities and serious injuries, OR
- (2) an ambitious percentage reduction of roadway fatalities and serious injuries by a specific date with an eventual goal of eliminating roadway fatalities and serious injuries.



Planning Structure

A committee, task force, implementation group, or similar body charged with oversight of the Action Plan development, implementation, and monitoring.



Safety Analysis

Analysis of existing conditions and historical trends that provides a baseline level of crashes involving fatalities and serious injuries across a jurisdiction, locality, Tribe, or region. Includes an analysis of locations where there are crashes and the severity of the crashes, as well as contributing factors and crash types by relevant road users (motorists, people walking, transit users, etc.). Analysis of systemic and specific safety needs is also performed, as needed (e.g., high-risk road features, specific safety needs of relevant road users, public health approaches, analysis of the built environment, demographic, and structural issues, etc.). To the extent practical, the analysis should include all roadways within the jurisdiction, without regard for ownership. Based on the analysis performed, a geospatial identification of higher-risk locations is developed (a High-Injury Network or equivalent).



FORT PIERCE COMPREHENSIVE SAFETY ACTION PLAN

Improving transportation safety requires a safe systems approach.

U.S. DOT has adopted a *Safe Systems Approach* to transportation safety. It works by building and reinforcing multiple layers of protection to both prevent crashes from happening in the first place and minimize the harm caused to those involved when crashes do occur.

The **Fort Pierce Comprehensive Safety Action Plan** (CSAP) will use a *Safe Systems Approach* to identify projects, policies, and programs to improve transportation safety in the city.

The *Safe Systems Approach* principles are:

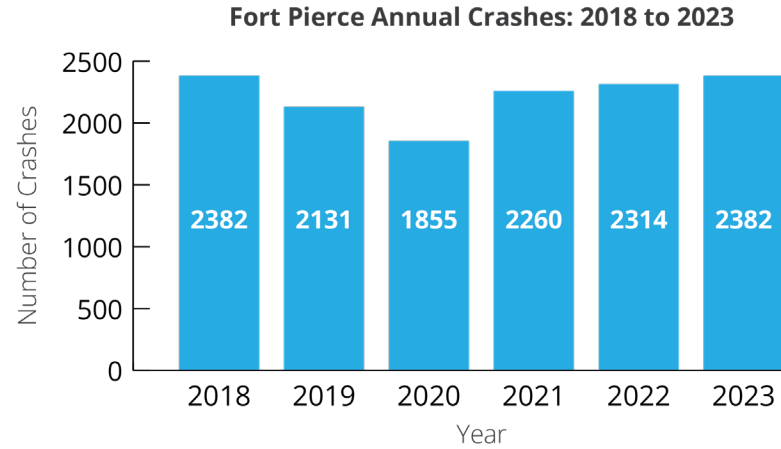
- Death and Serious Injuries are Unacceptable.
- Humans Make Mistakes.
- Humans Are Vulnerable.
- Responsibility is Shared.
- Safety is Proactive.
- Redundancy is Crucial.

This safety assessment provides the baseline measures for safety trends in Fort Pierce. The results of this assessment will be used to identify projects, policies, and programs to improve transportation safety in the city.



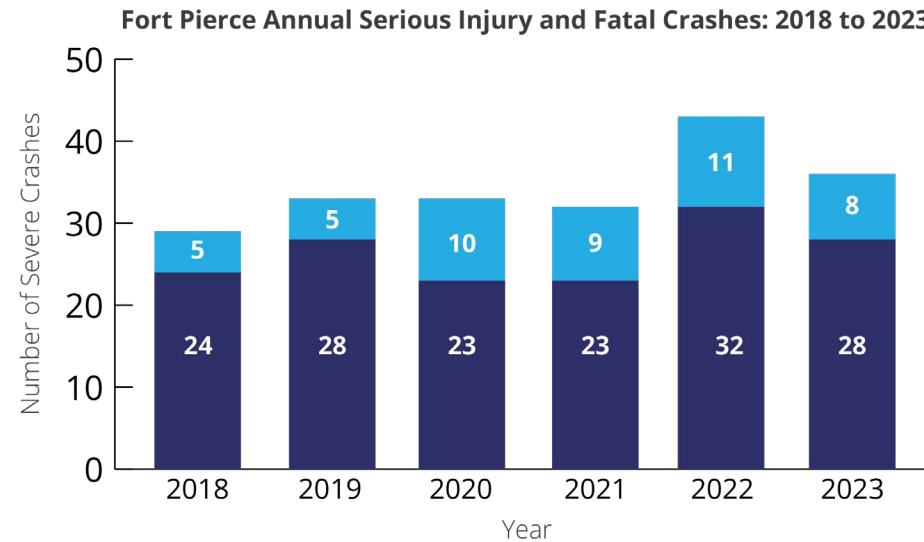
FORT PIERCE COMPREHENSIVE SAFETY ACTION PLAN

Traffic crashes are a persistent trend in Fort Pierce.



6

Average number of crashes per day over past six years.



3.6

Average number of serious injury and fatal crashes every month over past six years.

■ Incapacitating Injury ■ Fatal (within 30 days)

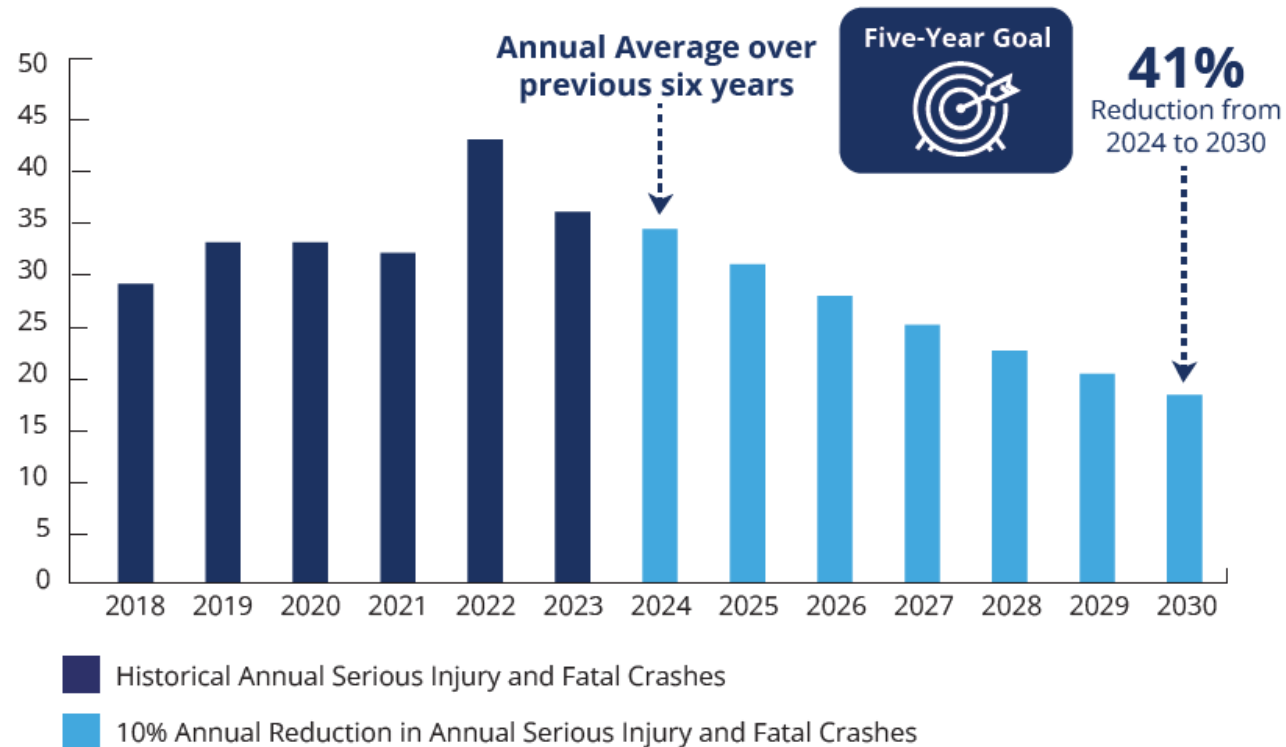
Source: Florida Department of Transportation



FORT PIERCE COMPREHENSIVE SAFETY ACTION PLAN

Longterm Goal: No serious injury and fatal crashes.

Short term Goal:



FORT PIERCE COMPREHENSIVE SAFETY ACTION PLAN

"Jenkins Rd. in between Orange & Okeechobee is very dangerous for bicycle riding."

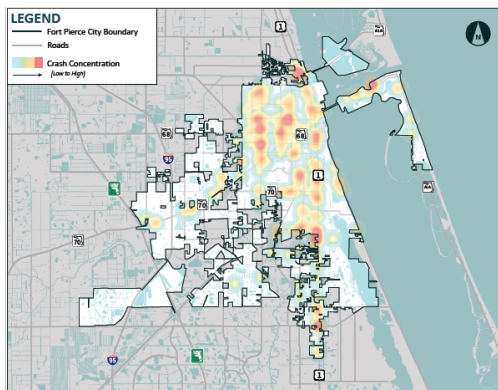
"Delaware Ave is like a dirt road. Also have police enforce speeders."

"Prioritize elderly and kids."

"Indrio Rd is very unsafe for bike riding or walking."

"Lots of potential, but not applying itself; needs to get some goals and work harder."

"Create more clarity of where to walk and bike with dedicated space."



-  Save lives with slower vehicle speeds
-  Design safer streets
-  Coordinate regional implementation
-  Create culture of safety leadership and accountability
-  Protect the most vulnerable road users
-  Foster a culture of safe travel



Planning Process



Overview of Recommendations

Projects

Policies

Programs



Save lives with slower vehicle speeds



Design safer streets



Coordinate regional implementation



Create culture of safety leadership and accountability



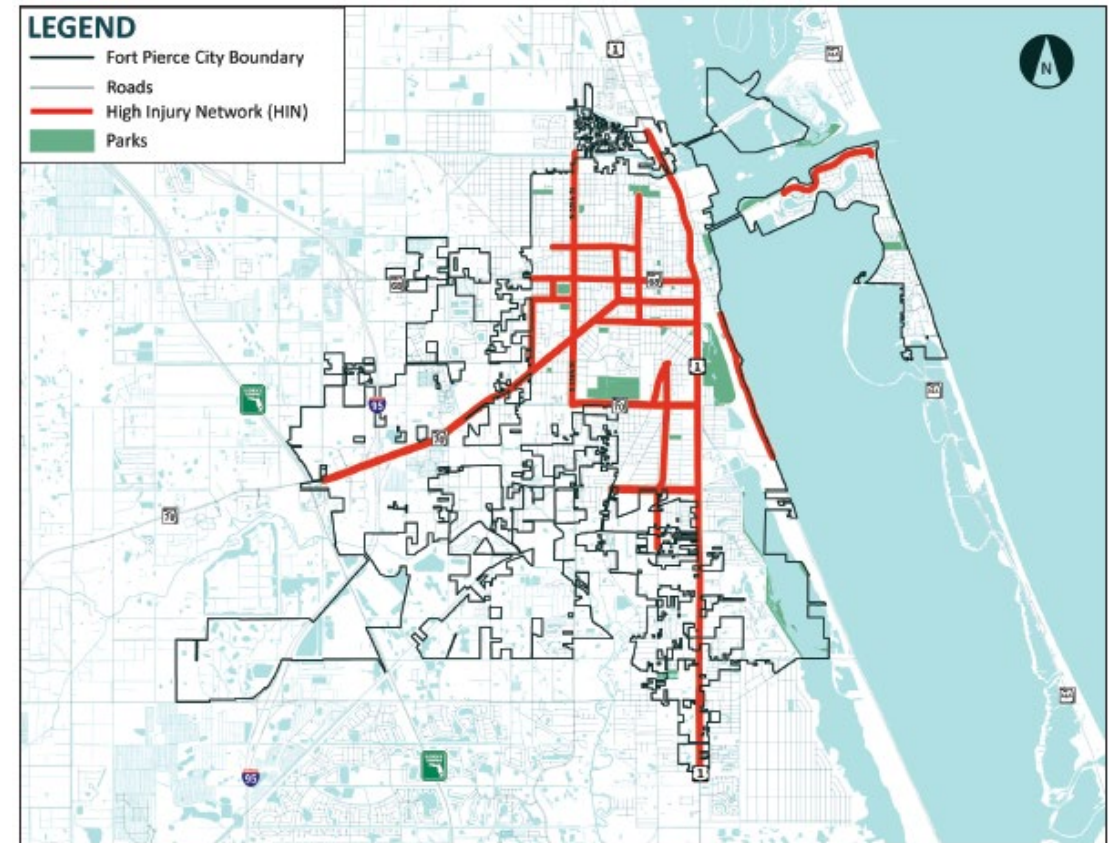
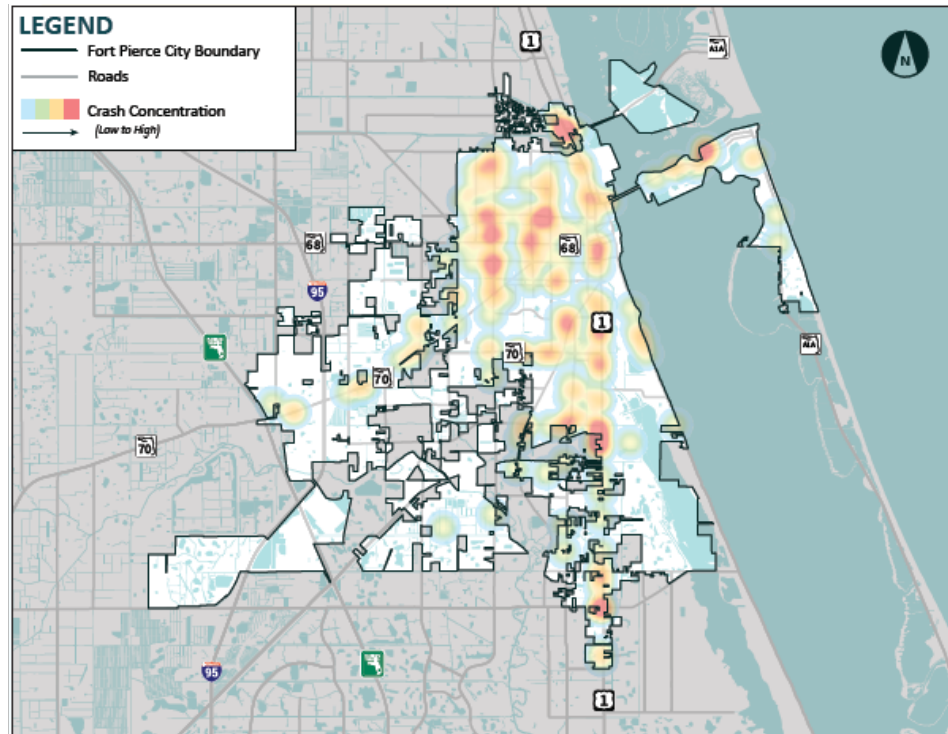
Protect the most vulnerable road users



Foster a culture of safe travel

FORT PIERCE COMPREHENSIVE SAFETY ACTION PLAN

High Injury Network



13%
of roadway network

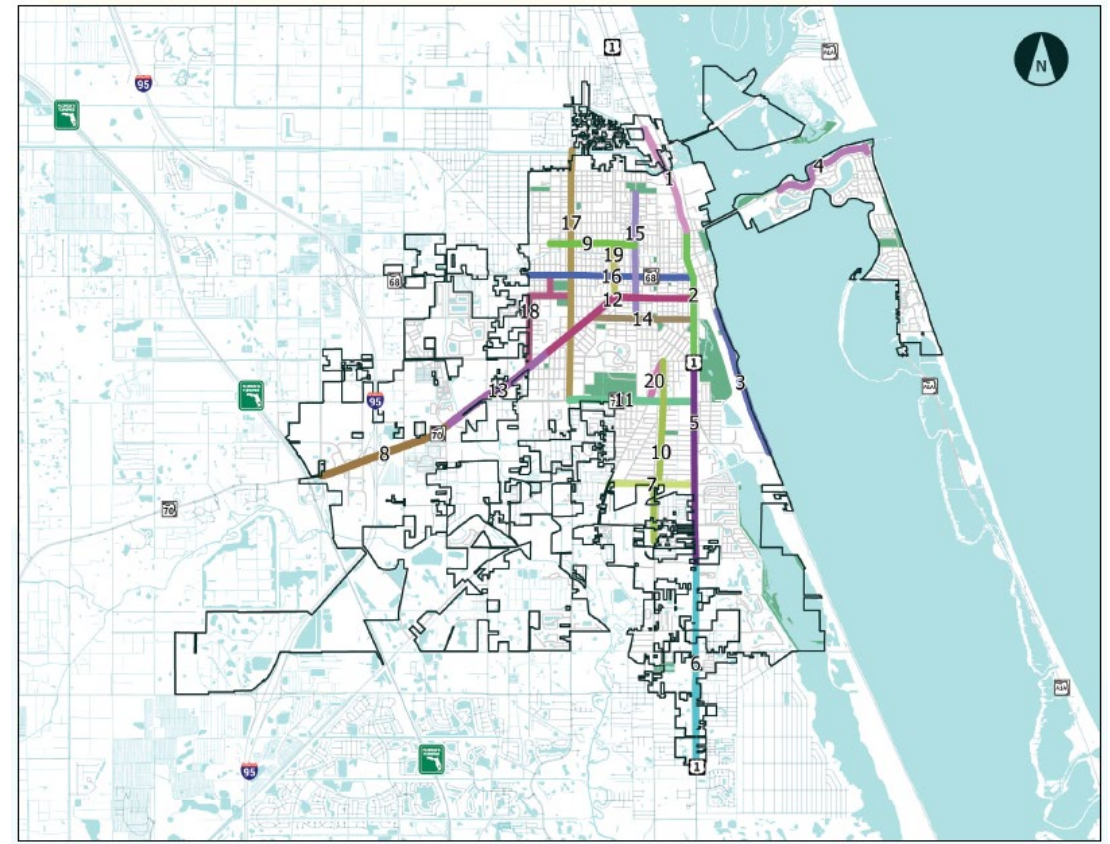
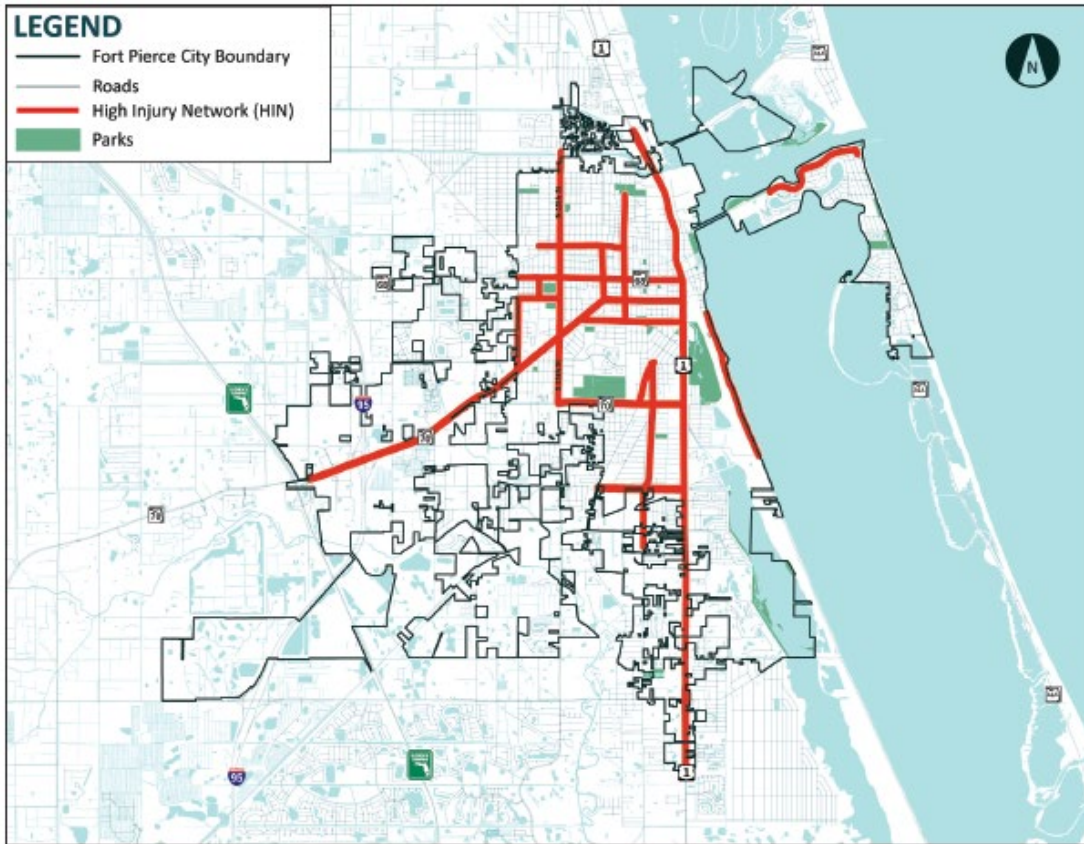
71%
of all crashes

84%
of all crashes



FORT PIERCE COMPREHENSIVE SAFETY ACTION PLAN

Projects



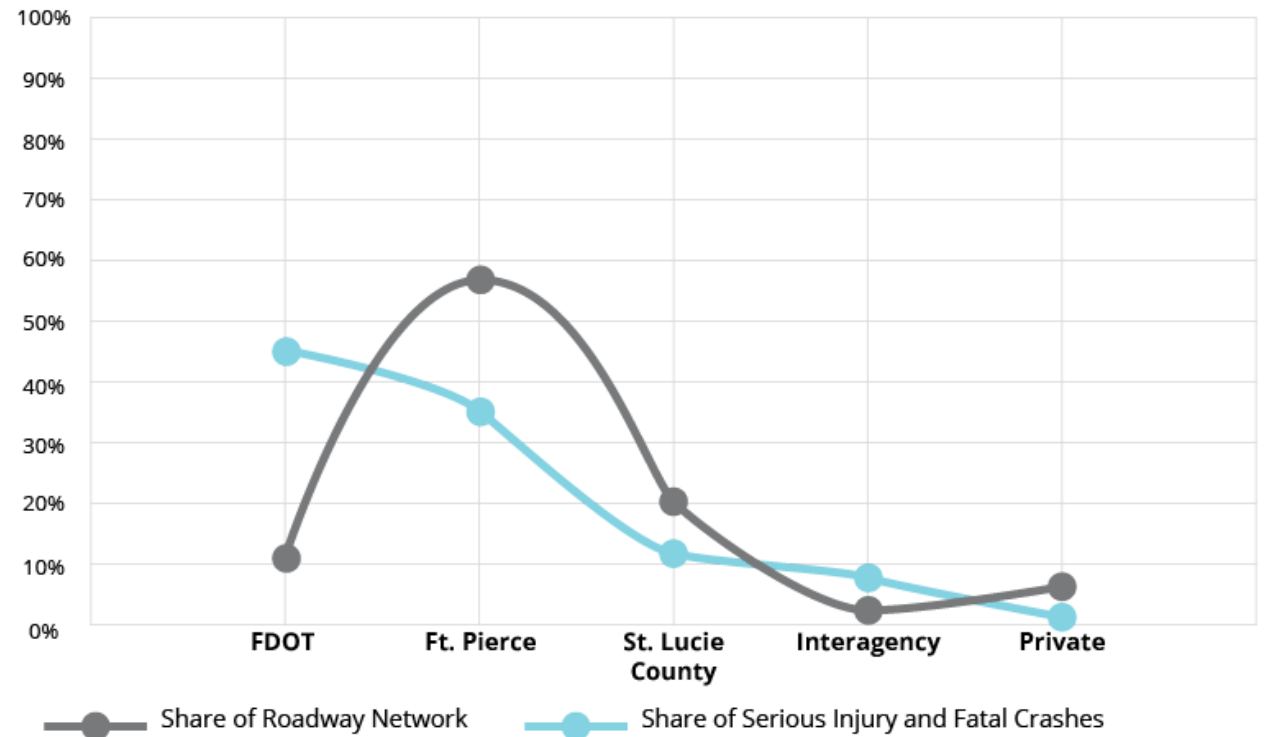
20 Projects



FORT PIERCE COMPREHENSIVE SAFETY ACTION PLAN

Working with regional partners is key to reducing and eliminating serious injury and fatal crashes in Fort Pierce

Ft. Pierce Serious Injury and Fatal Crashes by Roadway Ownership



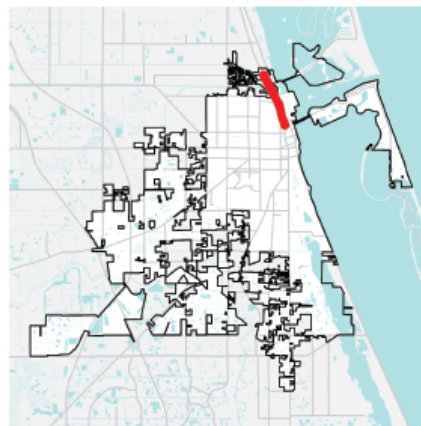
Source: Florida Department of Transportation



Project Details

Project 1: US 1 from Juanita Avenue to Seaway Drive

This US 1 segment serves commuters, freight trucks, and drivers from northern cities and Fort Pierce suburbs. It ends at Seaway Drive, the only access point to inlet businesses and residences. This segment sees diverse traffic and has a history of severe crashes – at least 2 fatalities and over 5 serious injury crashes in the past 5 years.



TOP 3 CRASH TYPES		RECOMMENDED COUNTERMEASURES	
<ul style="list-style-type: none"> » Left Turn » Rear End » Same Direction Sideswipe 		<ul style="list-style-type: none"> ✓ Variable Speed Limits ✓ Road Diet ✓ Backplates with Retroreflective Borders ✓ Corridor Access Management ✓ Dedicated Left and Right Turn Lanes ✓ Reduced Left-Turn Conflict Intersections ✓ Roundabouts ✓ Yellow Change Intervals ✓ Pavement Friction Management 	
CRASH STATISTICS		ROADWAY CONTEXT	
Overall Crash Ranking	#6	Ownership	FDOT
Total Crashes	432	Context Classification	Urban
Serious Crashes	12	Vehicle Volume (Cars per day)	High (> 15,000)
Fatal Crashes	1	Functional Classification	Arterial

FORT PIERCE COMPREHENSIVE SAFETY ACTION PLAN

FIRST YEAR STRATEGY

1

Create Vision Zero Task Force

Quarterly meetings to evaluate progress & plan next steps.

2

Apply for FDOT Safety Program Funds

Implement Safe Routes to School Program & apply for High Visibility Enforcement grant.

3

Apply for Grants

Apply for at Least One Federal or State Grant

4

Implement First Traffic Calming Projects

Identify first locations for traffic calming projects and implement them within one year of plan adoption.

5

Publish First Annual Safety Report

Begin the annual process of measuring and reporting progress towards achieving the City's transportation safety goals.

6

Host First Annual Safety Award Event

Celebrate and acknowledge the progress and success stories from the first year of implementation work.



FORT PIERCE COMPREHENSIVE SAFETY ACTION PLAN

Providing Feedback on Draft Plan

Project Website



- FtPierceSafetyPlan.com

Fort Pierce Comprehensive Safety Action Plan

[Project Home](#) [Project Documents](#) [Survey](#) [Get Involved](#)

The City of Fort Pierce is developing a Comprehensive Safety Action Plan to prevent and significantly reduce roadway fatalities and serious injuries in our community. This project site will serve as the central location for information about the plan as it is developed. Check back regularly for information about opportunities to share input and review findings and recommendations.

Why is this plan being developed?

Key Dates

Wednesday 16 October 2024 5:30 pm
Public Kickoff Meeting
Where: River Walk Center
When: 5:30pm to 7:00pm
Address: 600 Indian River Dr, Fort Pierce, FL 34950



Disclaimer

- 23 United States Code Section 407
- Discovery and admission as evidence of certain reports and surveys.
- Notwithstanding any other provision of law, reports, surveys, schedules, lists, or data compiled or collected for the purpose of identifying, evaluating, or planning the safety enhancement of potential accident sites, hazardous roadway conditions, or railway-highway crossings, pursuant to sections 130, 144, and 148 of this title or for the purpose of developing any highway safety construction improvement project which may be implemented utilizing Federal-aid highway funds shall not be subject to discovery or admitted into evidence in a Federal or State court proceeding or considered for other purposes in any action for damages arising from any occurrence at a location mentioned or addressed in such reports, surveys, schedules, lists, or data.

