

REVIEW SET

November 14, 2024

MILLCREEK

at ST. LUCIE COUNTY, FORT PIERCE, FL

AMENITY HARDSCAPE

Sheet List Table	
Sheet Number	Sheet Title
H0.1	COVER
H1.1	OVERALL SITE PLAN
H1.2	ENLARGED SITE PLAN
H1.3	ENLARGED SITE PLAN
H2.1	HARDSCAPE DETAILS
H2.2	HARDSCAPE DETAILS
H2.3	HARDSCAPE DETAILS
H2.4	HARDSCAPE DETAILS

ARCHITECTURE & LANDSCAPE

Basham & Lucas Design Group, Inc.
7645 Gate Parkway, Suite 101
Jacksonville, Florida 32256
(904) 731-2323

CIVIL ENGINEER

Thomas Engineering Group, LLC
840 SE Osceola St
Stuart, Florida 34994
(772) 888-3138

OWNER

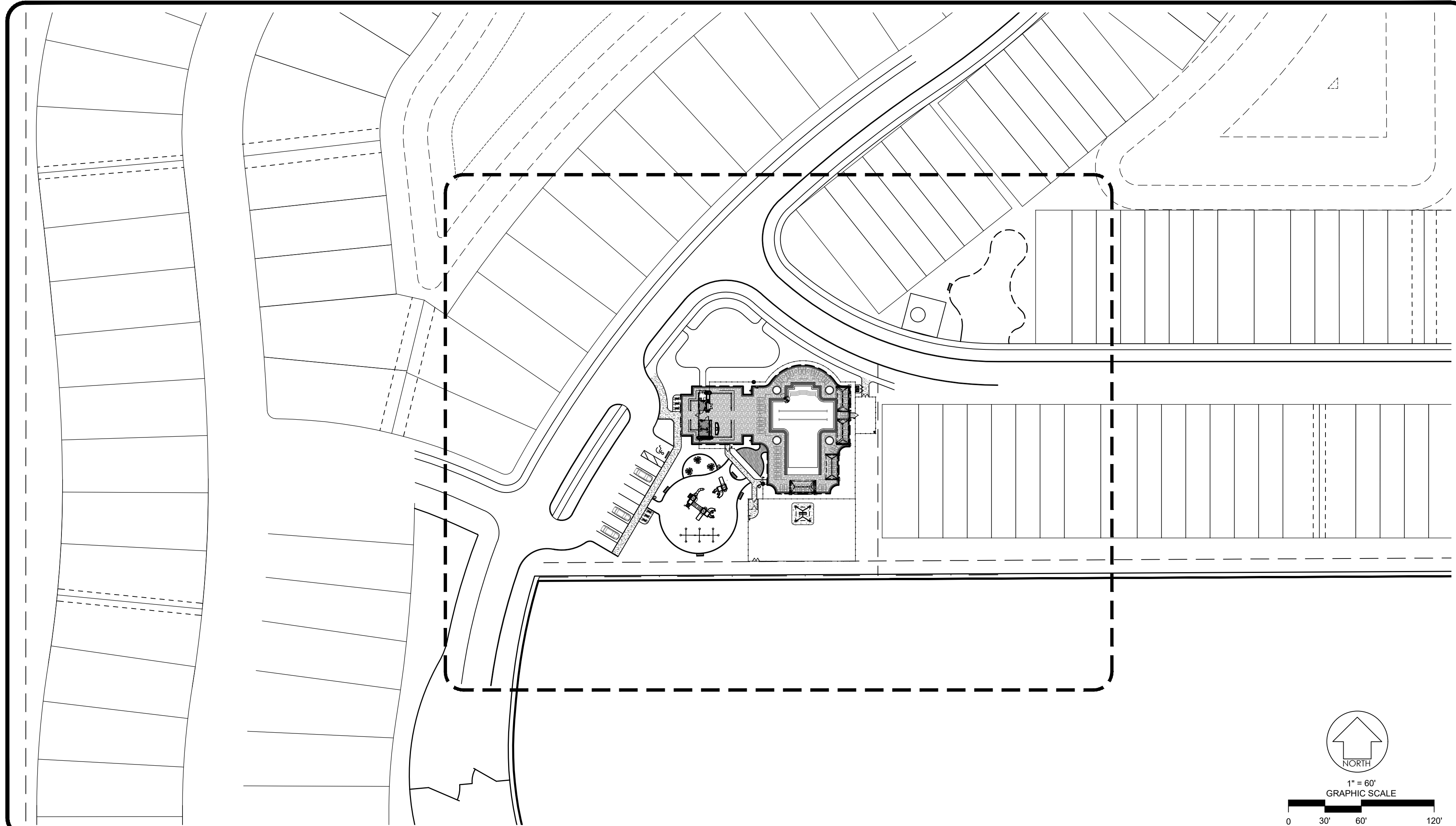
Dream Finders Homes, LLC
14701 Philips Hwy, Suite 300
Jacksonville FL 32256
(904) 456-9819

ELECTRICAL ENGINEER

Shaffer Engineering Group
12058 San Jose Blvd., Suite 502
Jacksonville, Florida 32223
(904) 239-3621

STRUCTURAL ENGINEERING

Lowe Structures, Inc
11651 Central Parkway, Suite 106
Jacksonville, Florida 32224
(904) 992-0377



DESIGN CRITERIA

THE STRUCTURE IS DESIGNED IN ACCORDANCE WITH THE FLORIDA BUILDING CODE 8TH EDITION. REFERENCE TO OTHER STANDARD SPECIFICATIONS OR CODES SHALL MEAN THE LATEST PUBLICATION.

FOUNDATIONS ARE DESIGNED FOR AN ALLOWABLE BEARING PRESSURE OF 2,000 PSF.

WIND LOADS:
ULTIMATE WIND SPEED115 MPH
NOMINAL WIND SPEED90 MPH
RISK CATEGORYI
WIND EXPOSURE.....C
DIRECTIONALITY FACTOR (Kd)0.85
SHAPE FACTORSPER CODE

CONCRETE

ALL CONCRETE PROPORTIONING, MIXING, TRANSPORTATION, PLACING, AND CURING SHALL CONFORM TO ACI 301.

ALL CONCRETE SHALL BE LABORATORY DESIGNED AND CONTROLLED TO MEET THE REQUIREMENTS OF ACI 318 AND THE PROJECT'S DESIGN BUILDING CODE.

USE OF CALCIUM CHLORIDE, CHLORIDE IONS, OR OTHER SALTS IS CONCRETE IS PROHIBITED.

CONCRETE SHALL CONFORM TO THE FOLLOWING:
LOCATIONE's @28 DAYS.....TYPE AGGREGATE.....W/C RATIO(MAX)
FOOTINGS.....3,000.....NORMAL WEIGHT.....0.55
ALL OTHER CONC.....3,000.....NORMAL WEIGHT.....0.55

THE AIR CONTENT IN ALL CONCRETE EXPOSED TO WEATHER SHALL BE BETWEEN 1% & 4%.

CONCRETE PROTECTION FOR REINFORCEMENT SHALL BE AS NOTED BELOW, OR PER LATEST ACI 318 FOR CONDITIONS OTHER THAN THOSE LISTED:

CONCRETE CAST AGAINST EARTH.....3"
FORMED CONCRETE EXPOSED TO EARTH OR WEATHER.....2"

CHAMFER ALL EXPOSED CORNER 3/4" MINIMUM.

ALL HOOKS CALLED FOR IN STRUCTURAL DRAWINGS SHALL BE ACI STANDARD HOOKS, UNO.

REINFORCING STEEL SHALL CONFORM TO ASTM A615, GRADE 60 UNO.
ALL WELDED WIRE MESH SHALL CONFORM TO ASTM A185. LAP TWO SQUARES AT SPLICES.

DO NOT WELD REINFORCING STEEL UNLESS APPROVED IN WRITING BY THE STRUCTURAL ENGINEER.

TIE ALL REINFORCING STEEL AND EMBEDS SECURELY IN PLACE PRIOR TO PLACING CONCRETE. THE CONTRACTOR SHALL PROVIDE SUPPORTS TO MAINTAIN THE REQUIRED REINFORCING POSITION. "WET STICKING" DOWELS INTO CONCRETE IS NOT PERMITTED.

THE CONTRACTOR SHALL COMPARE THE STRUCTURAL PLANS AND DETAILS WITH THE ARCHITECTURAL PLANS AND DETAILS AND REPORT ANY DISCREPANCIES TO THE ARCHITECT PRIOR TO THE COMMENCEMENT OF SHOP DRAWINGS.

ALL REINFORCING SHALL HAVE AN ACI CLASS B SPLICE AT BAR LAPS.



Know what's below.
Call before you dig.

FOUNDATIONS

A GEOTECHNICAL ENGINEER REGISTERED IN THE STATE OF THE PROJECT SHALL INSPECT AND ASSURE THE ADEQUACY OF ALL SUBGRADES, FILLS, AND BACKFILLS BEFORE PLACEMENT OF FOUNDATIONS, FOOTINGS, SLABS, ETC.. WRITTEN ACCEPTANCE OF THE WORK INSPECTED AND VERIFICATION OF ASSUMED SOIL BEARING PRESSURE SHALL BE SUBMITTED TO THE ARCHITECT AND STRUCTURAL ENGINEER.

WHERE FOOTING STEPS ARE REQUIRED, THE STEPS SHALL BE NO STEEPER THAN ONE VERTICAL TO TWO HORIZONTAL, UNO ON PLAN. THE CONTRACTOR IS RESPONSIBLE FOR LOCATING THE REQUIRED FOOTING STEP LOCATIONS.

SUPPLEMENTARY NOTES

THE CONTRACTOR IS SOLELY RESPONSIBLE FOR THE DESIGN, ADEQUACY, AND SAFETY OF ERECTION, BRACING, SHORING, TEMPORARY SUPPORTS, ETC.. THE STRUCTURAL ELEMENTS ARE NOT CONSIDERED STABLE UNTIL THE STRUCTURE IS COMPLETE.

REVIEW OF THE SUBMITTAL INFORMATION SHALL BE FOR GENERAL REQUIREMENTS OF THE PROJECT, AND SHALL NOT INCLUDE CHECKING OF DETAILED DIMENSIONS OR DETAILED QUANTITIES, NOR REVIEW OF THE CONTRACTOR'S SAFETY MEASURES ON OR OFF THE WORKSITE OR THE MEANS AND METHODS OF DOING ANY WORK.

THE CONTRACTOR SHALL VERIFY ALL EXISTING CONDITIONS AND ARCHITECTURAL AND STRUCTURAL PLAN DIMENSIONS AND ELEVATIONS PRIOR TO THE COMMENCEMENT OF CONSTRUCTION AND NOTIFY THE STRUCTURAL ENGINEER OF ANY CONFLICTS.

ALL STRUCTURAL OPENINGS AROUND OR AFFECTED BY MECHANICAL, ELECTRICAL AND PLUMBING EQUIPMENT SHALL BE VERIFIED WITH EQUIPMENT PURCHASED BEFORE PROCEEDING WITH STRUCTURAL WORK AFFECTED.

ANY ENGINEERING DESIGN PROVIDED BY OTHERS AND SUBMITTED FOR REVIEW SHALL BEAR THE SEAL OF AN ENGINEER REGISTERED IN THE STATE OF THE PROJECT.

GENERAL CONTRACTOR MUST REVIEW AND APPROVE SHOP DRAWINGS PRIOR TO SUBMITTAL TO ARCHITECT/ENGINEER. SUBMITTALS WHICH DO NOT CONTAIN THE CONTRACTOR'S SHOP DRAWING STAMP OR HAVE BEEN MERELY "RUBBER STAMPED" SHALL BE RETURNED WITHOUT REVIEW. CONTRACTOR SHOULD ALLOW TWO WEEKS FOR SUBMITTAL REVIEW.

CONTRACTOR SHALL NOT ORDER MATERIAL OR COMMENCE WITH CONSTRUCTION UNTIL SHOP DRAWINGS HAVE BEEN REVIEWED AND APPROVED. WORK DONE OR ORDERS PLACED BEFORE SHOP DRAWING APPROVAL IS AT THE CONTRACTOR'S RISK.

THE PROJECT'S STRUCTURAL DRAWINGS AND ELECTRONIC FILES ARE THE PROPERTY OF LOWE STRUCTURES, INC. THE CONTRACTOR AND SUBCONTRACTOR SHALL COMPENSATE LOWE STRUCTURES, INC. FOR THE USE OF THE PROJECT'S CAD FILES FOR ANY PURPOSE INCLUDING SHOP DRAWING PREPARATION.

THE CONTRACTOR SHALL NOT SCALE DRAWINGS. DIMENSIONS SHOWN ON ARCHITECTURAL AND STRUCTURAL PLANS AND DETAILS WILL CONTROL.

MASONRY

PROVIDE HOLLOW, LOAD BEARING CONCRETE MASONRY UNITS CONFORMING TO ASTM C90, TYPE I WITH A MINIMUM DENSITY OF 105 PCF.

CMU SHALL HAVE A MINIMUM ASSEMBLY COMPRESSIVE STRENGTH (F'm) OF 2,000 PSI.

THE 28-DAY GROUT COMPRESSIVE STRENGTH SHALL BE 3,000 PSI MINIMUM.

MORTAR SHALL BE TYPE "S" OR "M".

LAP ALL REINFORCING 48 BAR DIAMETERS IN BOND BEAMS AND 72 BAR DIAMETERS IN VERTICAL WALL REINFORCING AND MASONRY BEAMS.

ALL CMU WALLS SHALL BE LAID IN RUNNING BOND.

REINFORCE ALL CMU WALLS AS NOTED IN THE PROJECTS PLANS, SECTIONS AND DETAILS. ADDITIONALLY, PROVIDE A #5 VERTICAL FULL HEIGHT AT EACH WALL END AND CORNER.

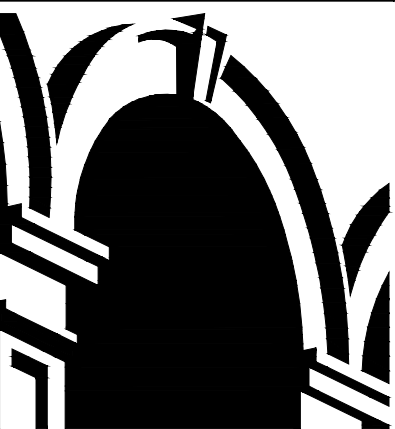
ALL CMU CELLS SHALL BE GROUTED SOLID.

REVISIONS

NO.	DATE	DESCRIPTION	BY

THIS DRAWING IS AN INSTRUMENT OF SERVICE AND THE PROPERTY OF BASHAM & LUCAS DESIGN GROUP AND SHALL REMAIN THEIR PROPERTY. THE USE OF THIS DRAWING IS RESTRICTED TO THE ORIGINAL SITE FOR WHICH IT IS PREPARED AND PUBLICATION THEREOF IS EXPRESSLY LIMITED TO SUCH USE.

prepared for DREAM FINDER HOMES
MILLCREEK AMENITY
at St. Lucie County, Ft. Pierce, FL
AMENITY HARDSCAPE
COVER



BASHAM & LUCAS
DESIGN GROUP, INC.

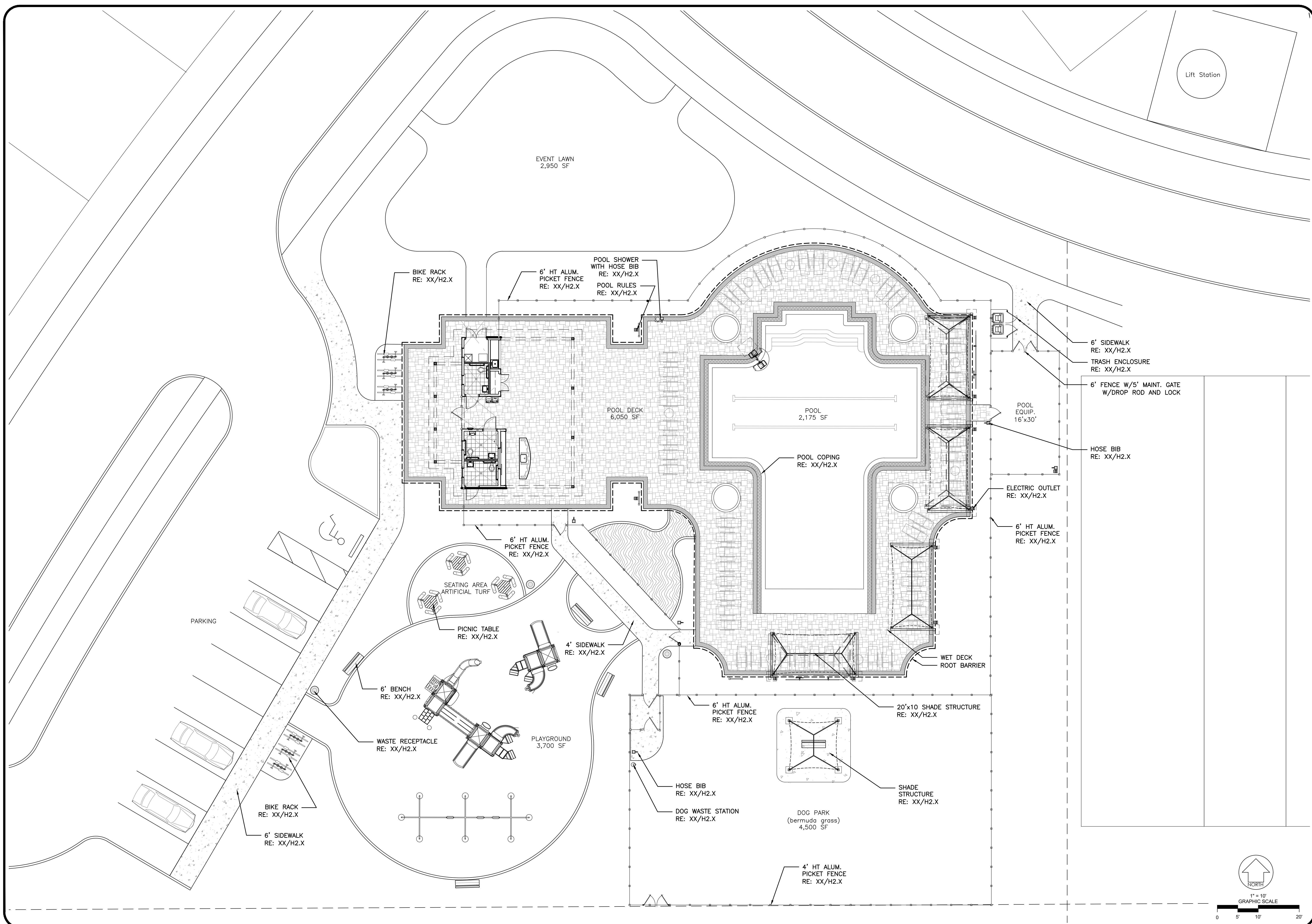
7645 GATE PARKWAY SUITE 101
JACKSONVILLE, FLORIDA 32256
(904) 731-2323 • bashamlucas.com
LN: AR0016514 • LA6666906

NOT FOR CONSTRUCTION

DRAWN BY CB
CHECKED BY XXX
DATE 11-14-24
JOB NO. 24-40

H0.1

REVIEW SET



NO.	DATE	DESCRIPTION	BY

THIS DRAWING IS AN INSTRUMENT OF SERVICE AND THE PROPERTY OF BASHAM & LUCAS DESIGN GROUP AND SHALL REMAIN THEIR PROPERTY. THE USE OF THIS DRAWING IS RESTRICTED TO THE ORIGINAL SITE FOR WHICH IT IS PREPARED AND PUBLICATION THEREOF IS EXPRESSLY LIMITED TO SUCH USE.

prepared for DREAM FINDER HOMES
MILLCREEK AMENITY
 at St. Lucie County, Ft. Pierce, FL
AMENITY HARDSCAPE
 ENLARGED SITE PLAN

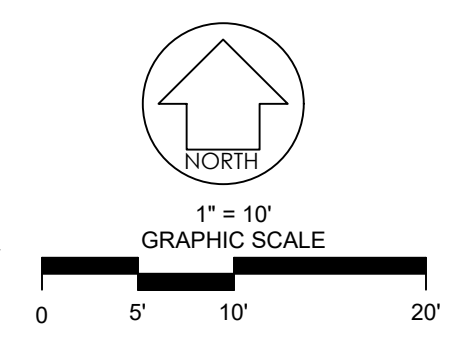


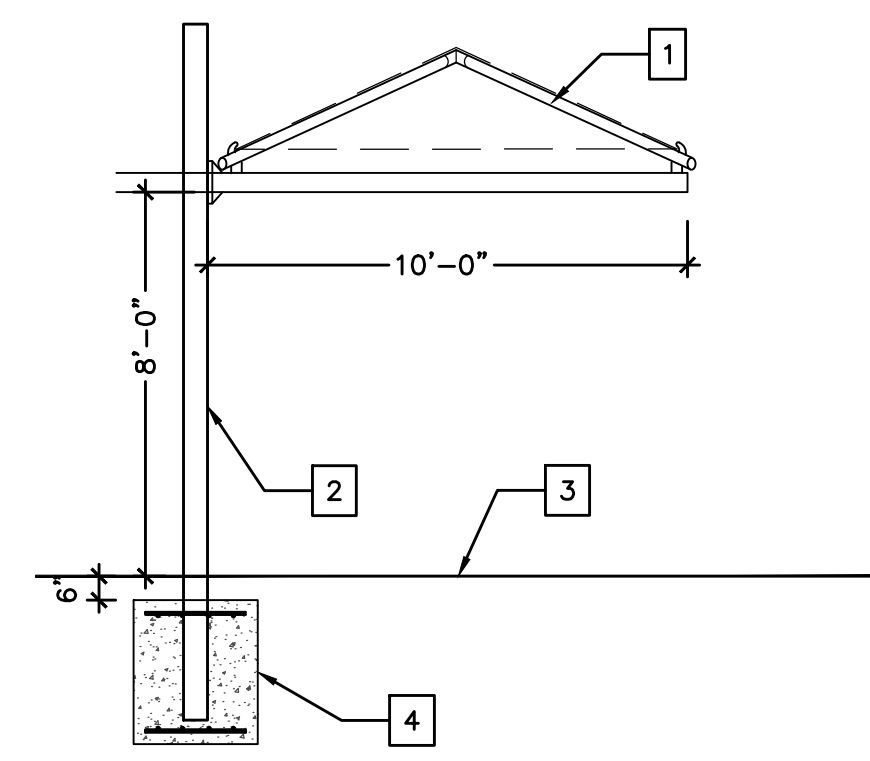
BASHAM & LUCAS
 DESIGN GROUP, INC.
 7645 GATE PARKWAY SUITE 101
 JACKSONVILLE, FLORIDA 32256
 (904) 731-2323 • bashamlucas.com
 LN: AR0016514 • LA666906

NOT FOR CONSTRUCTION

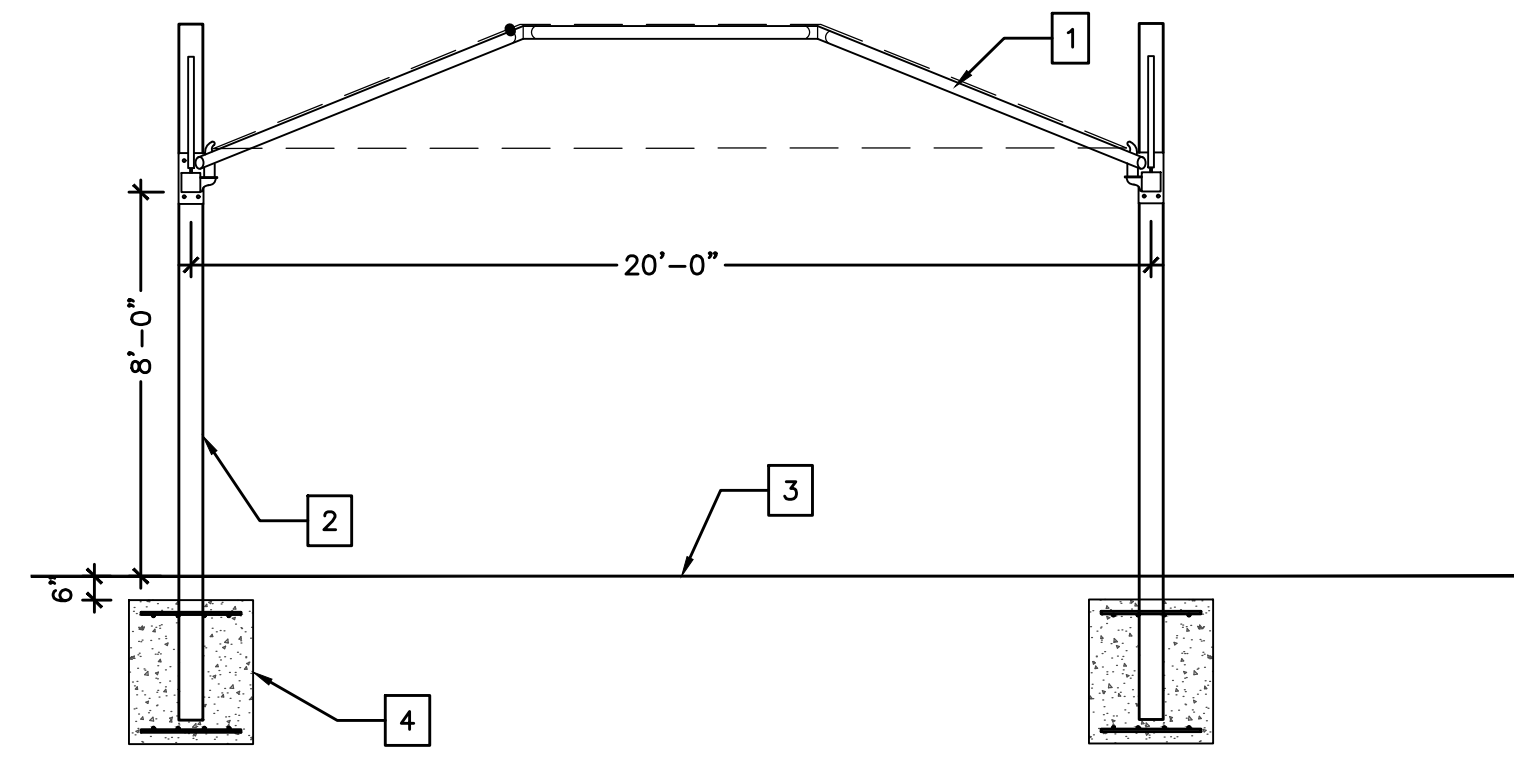
DRAWN BY CB
 CHECKED BY XXX
 DATE 11-14-24
 JOB NO. 24-40

H1.2
 REVIEW SET

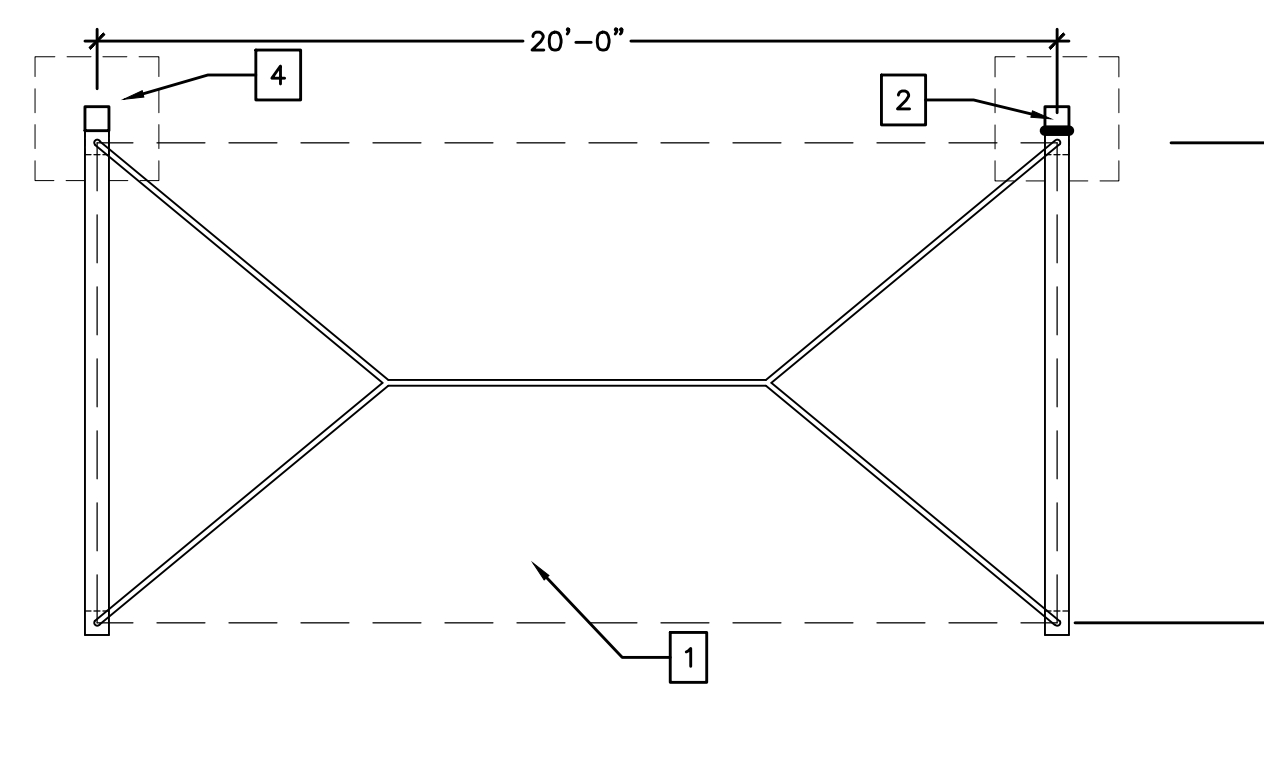




A ELEVATION VIEW



B ELEVATION VIEW



C PLAN VIEW

KEY NOTES

- 1 20' x 10' CANTILEVERED PRE-FIN MET. AND FABRIC SHADE STRUCTURE ("SUPERIOR RECREATIONAL SHADE" OR APRVD EQ.) (FABRIC COLOR: XXX)
- 2 PREFIN. METAL COLUMN PER SHADE STRUCTURE MANUF. (COLOR: XXX)
- 3 GROUND FINISH AS SCHEDULED
- 4 REINF. CONC. FOOTING, SIZE & REINF. PER SHADE STRUCTURE MANUFACTURERS STRUCTURAL ENGINEERING AND SHOP DRAWINGS TYP.

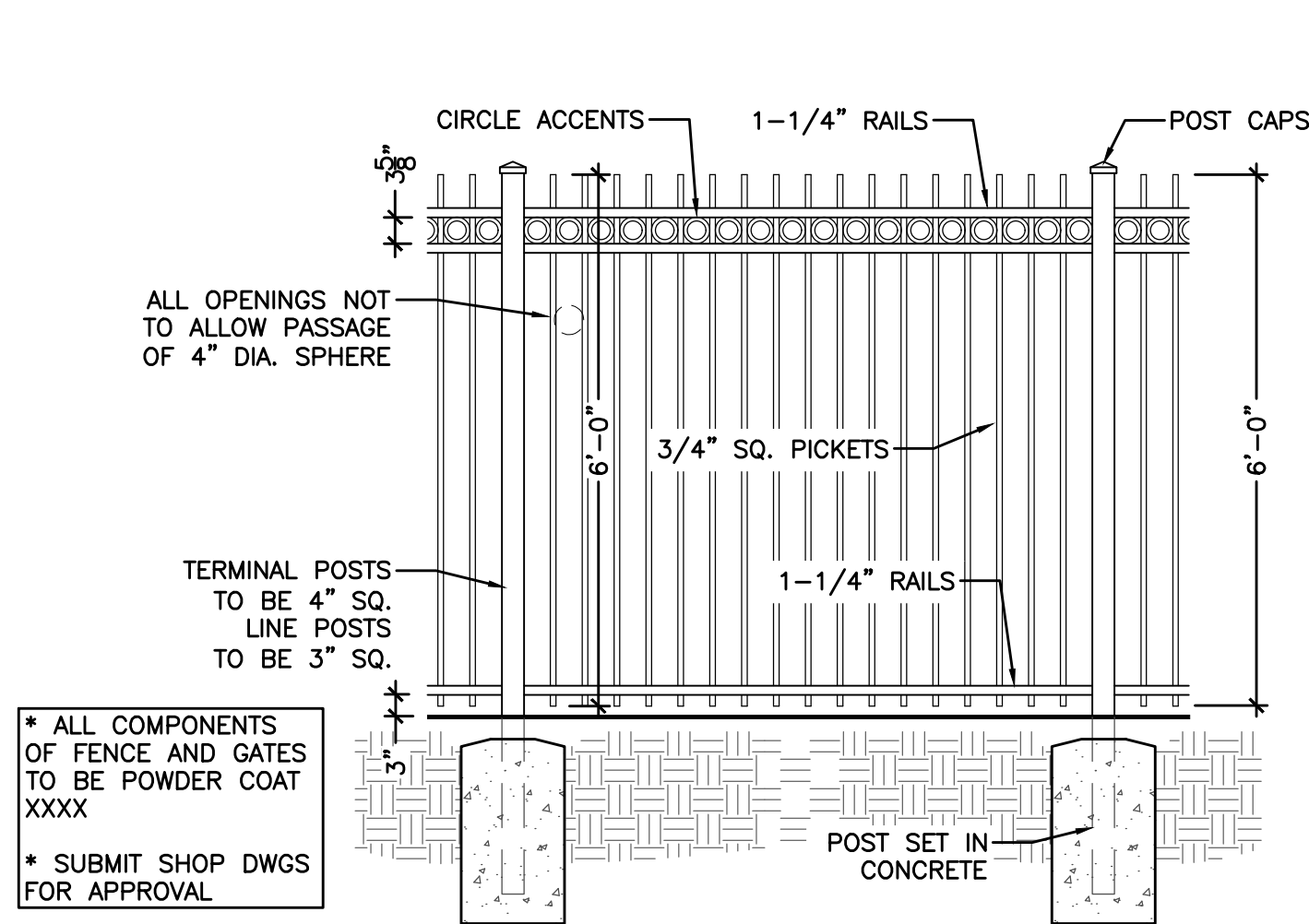
NOTES:
 1. INSTALLATION TO BE COMPLETED IN ACCORDANCE WITH MANUFACTURER'S SPECIFICATIONS.
 2. THIS DRAWING IS INTENDED FOR USE BY ARCHITECTS, ENGINEERS, CONTRACTORS, CONSULTANTS AND DESIGN PROFESSIONALS FOR PLANNING PURPOSES ONLY. THIS DRAWING MAY NOT BE USED FOR CONSTRUCTION.

SUPERIOR RECREATIONAL PRODUCTS
 1-800-327-8774
 www.srpshade.com

QUANTITY REQUIRED
 4

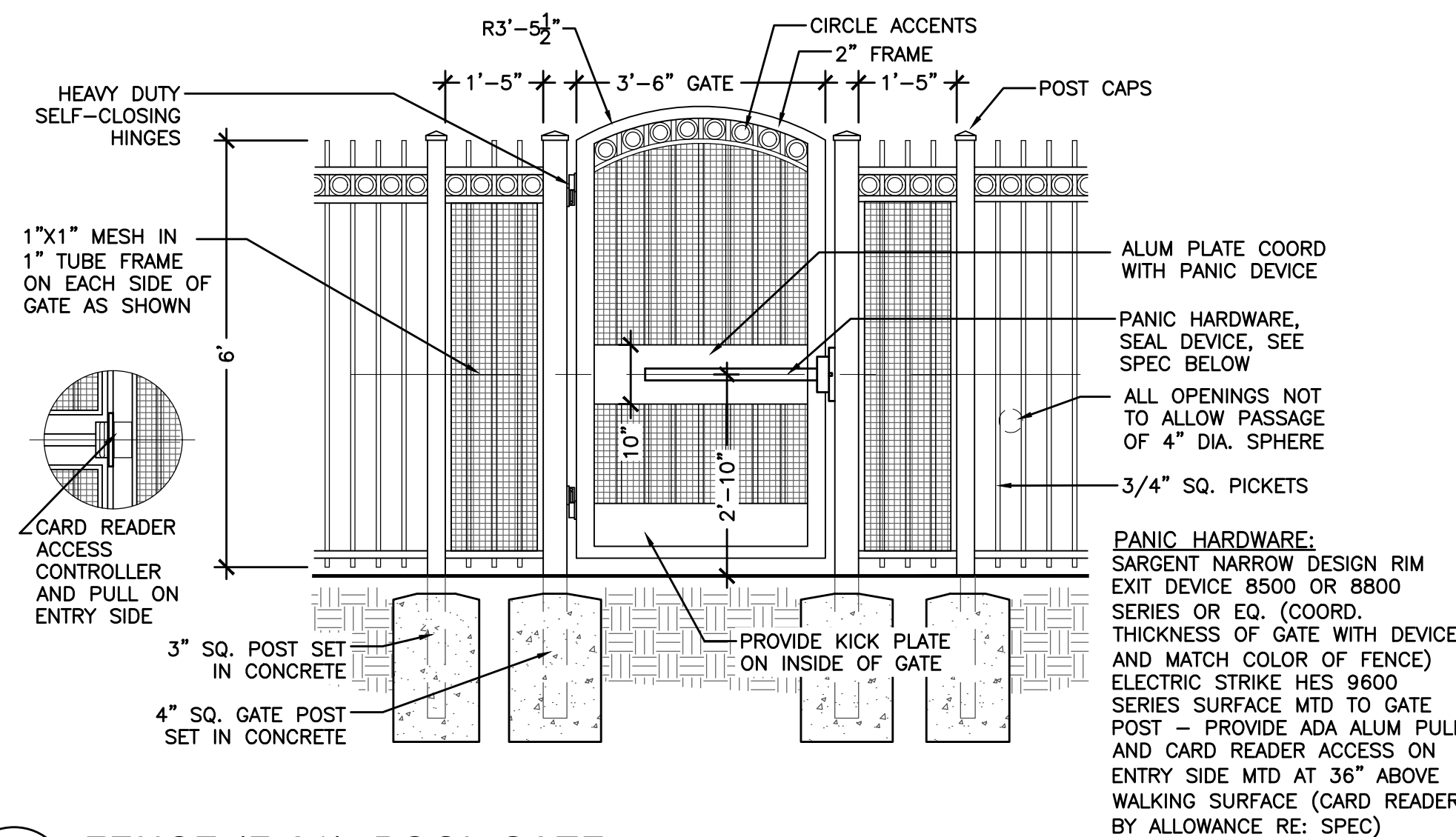
1 CANTILEVER SHADE STRUCTURE: 10 x 20' POOL (SH-01)

SCALE: 1/4" = 1'-0"



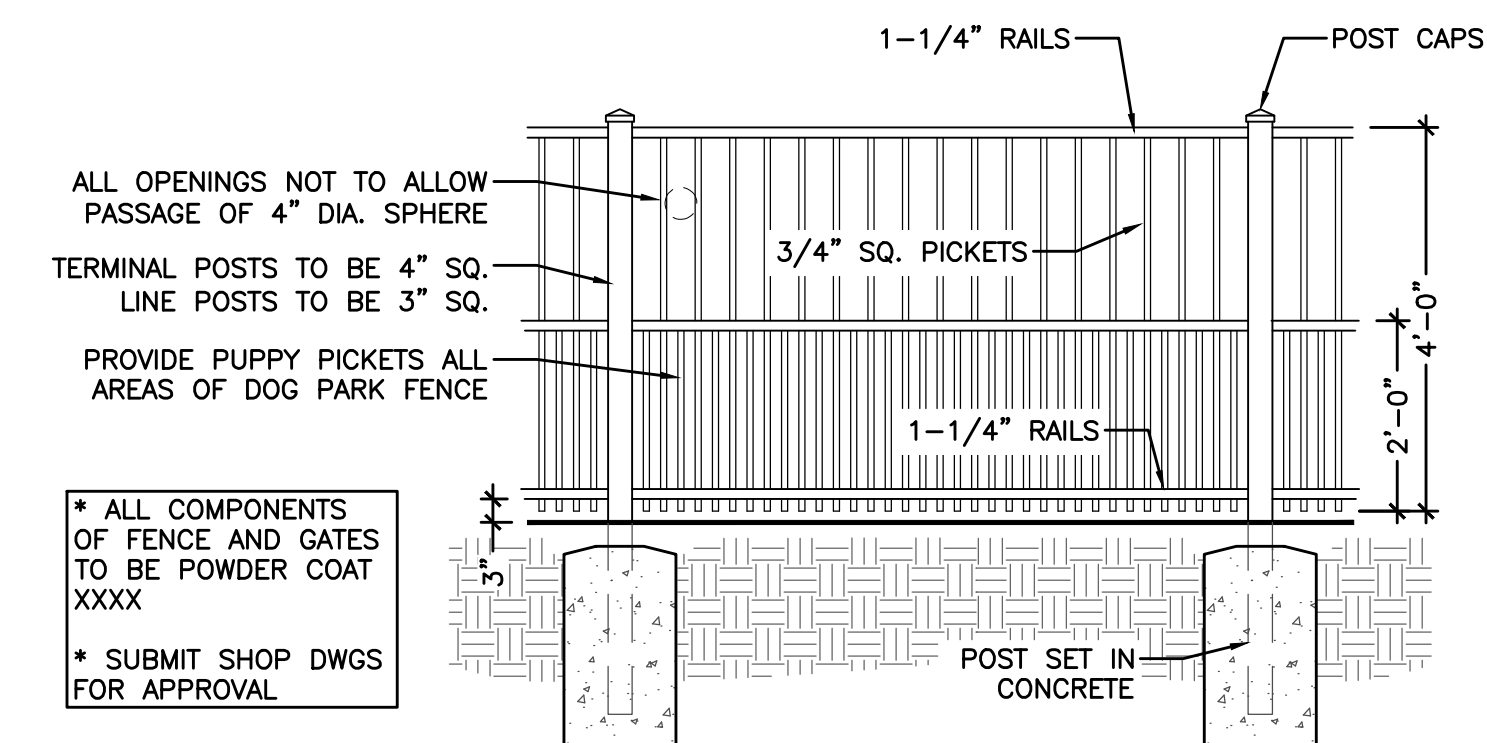
2 FENCE (F-01): POOL AREA

SCALE: 1/2" = 1'-0"



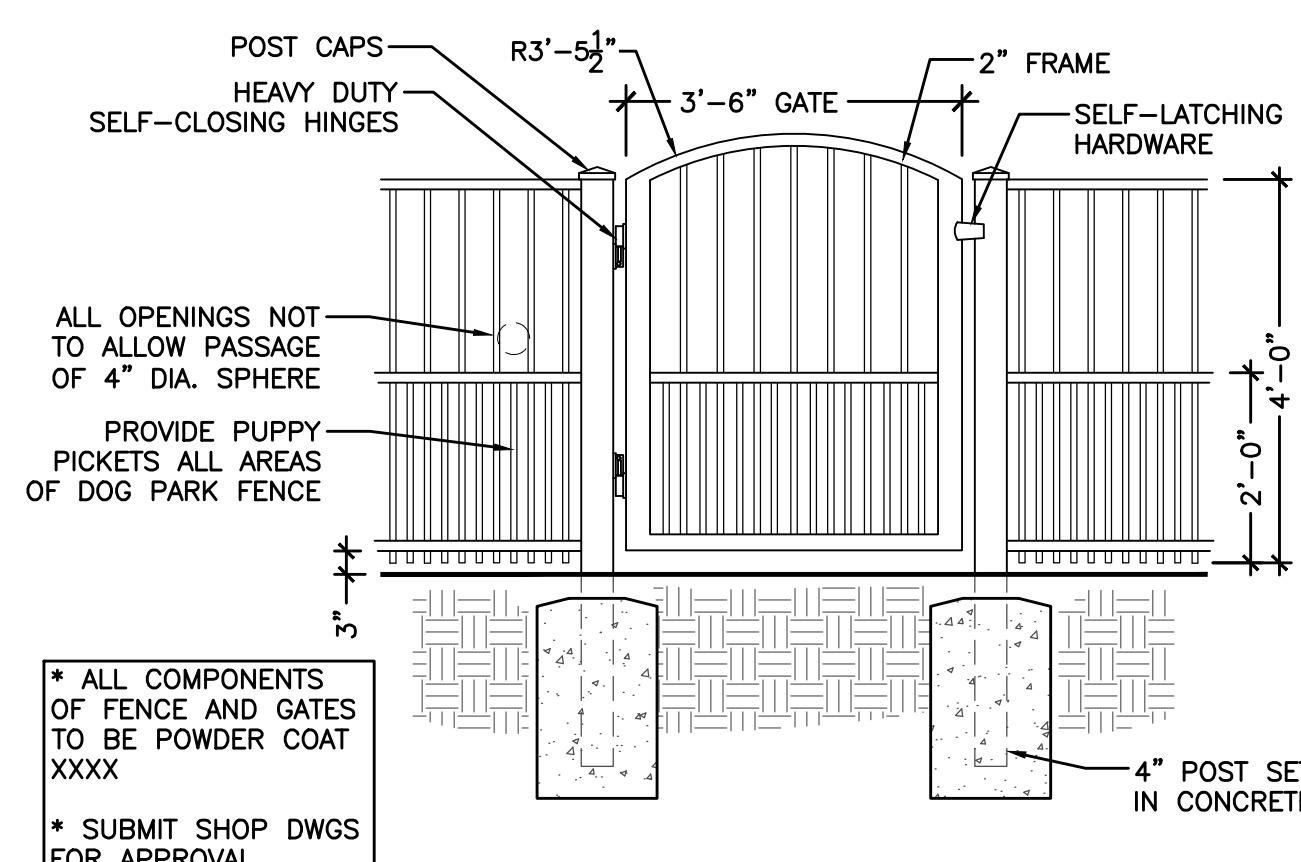
3 FENCE (F-01): POOL GATE

SCALE: 1/2" = 1'-0"



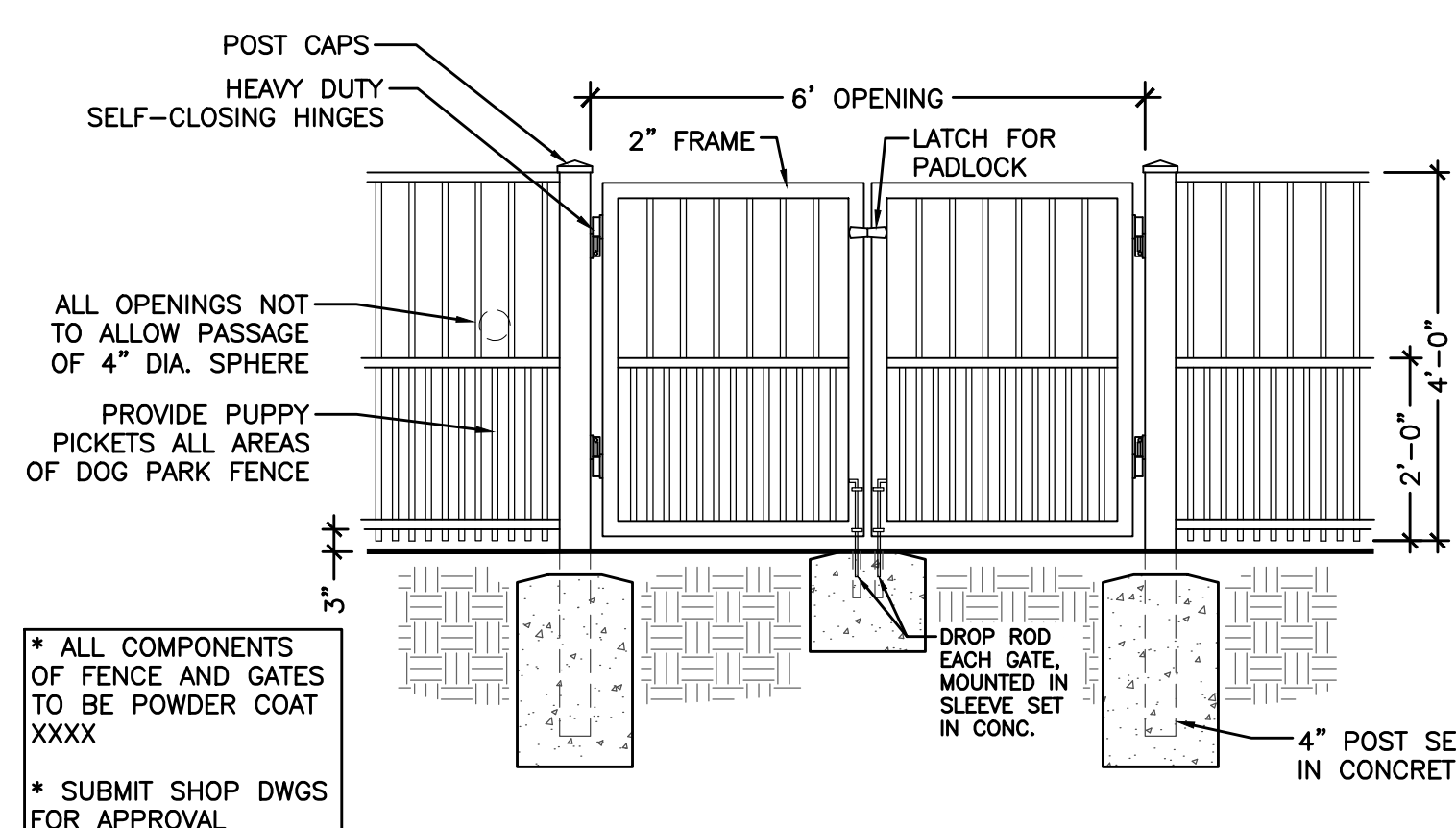
4 FENCE (F-03): DOG PARK

SCALE: 1/2" = 1'-0"



5 FENCE (F-03): DOG PARK GATE

SCALE: 1/2" = 1'-0"



6 FENCE (F-03): DOG PARK MAINT. GATES

SCALE: 1/2" = 1'-0"

REVISIONS

NO.	DATE	DESCRIPTION	BY

THIS DRAWING IS AN INSTRUMENT OF SERVICE AND THE PROPERTY OF BASHAM & LUCAS DESIGN GROUP AND SHALL REMAIN THEIR PROPERTY. THE USE OF THE DRAWING IS RESTRICTED TO THE ORIGINAL SITE FOR WHICH IT IS PREPARED AND PUBLICATION THEREOF IS EXPRESSLY LIMITED TO SUCH USE.

prepared for DREAM FINDER HOMES
MILL CREEK AMENITY
 at St. Lucie County, Ft. Pierce, FL
AMENITY HARDSCAPE
 HARDSCAPE DETAILS



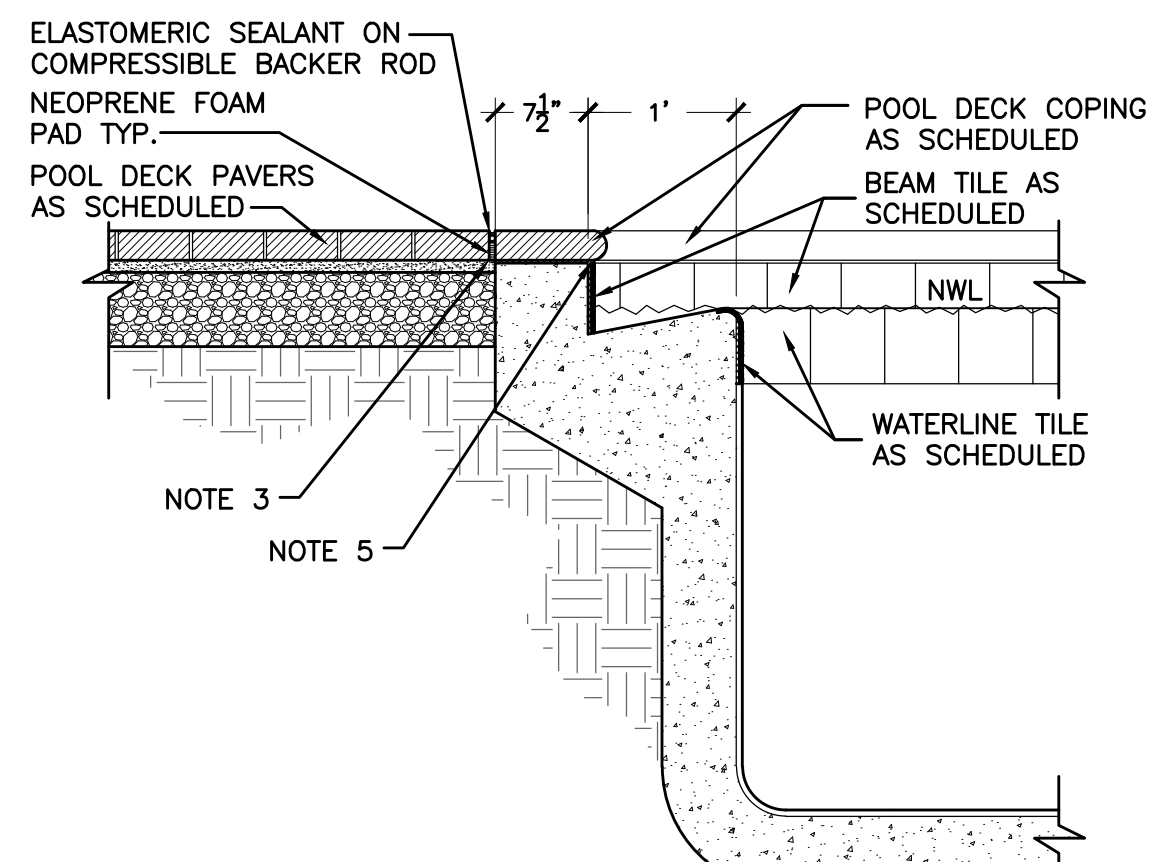
BASHAM & LUCAS
 DESIGN GROUP, INC.

7645 GATE PARKWAY SUITE 101
 JACKSONVILLE, FLORIDA 32256
 (904) 731-2323 • bashamilucas.com
 LN: AR0016514 • LA6669096

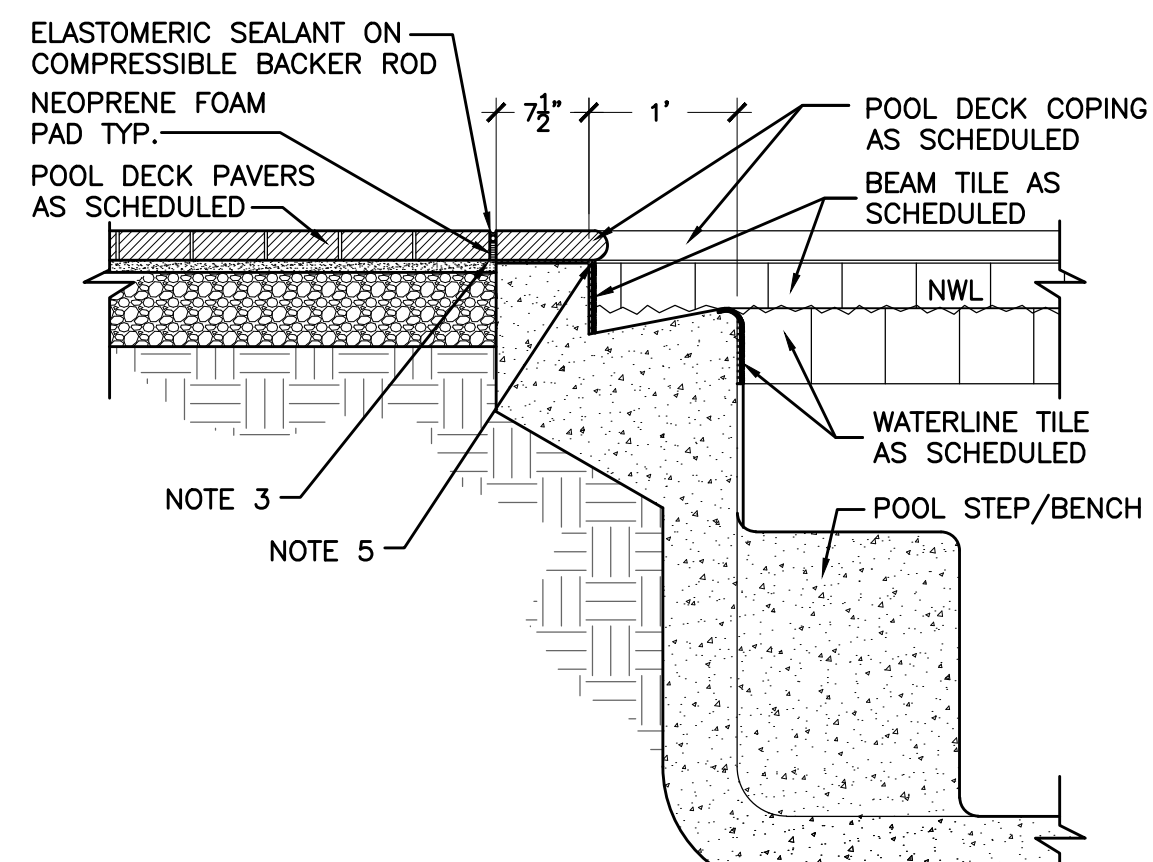
NOT FOR CONSTRUCTION

DRAWN BY CB
 CHECKED BY XXX
 DATE 11-14-24
 JOB NO. 24-40

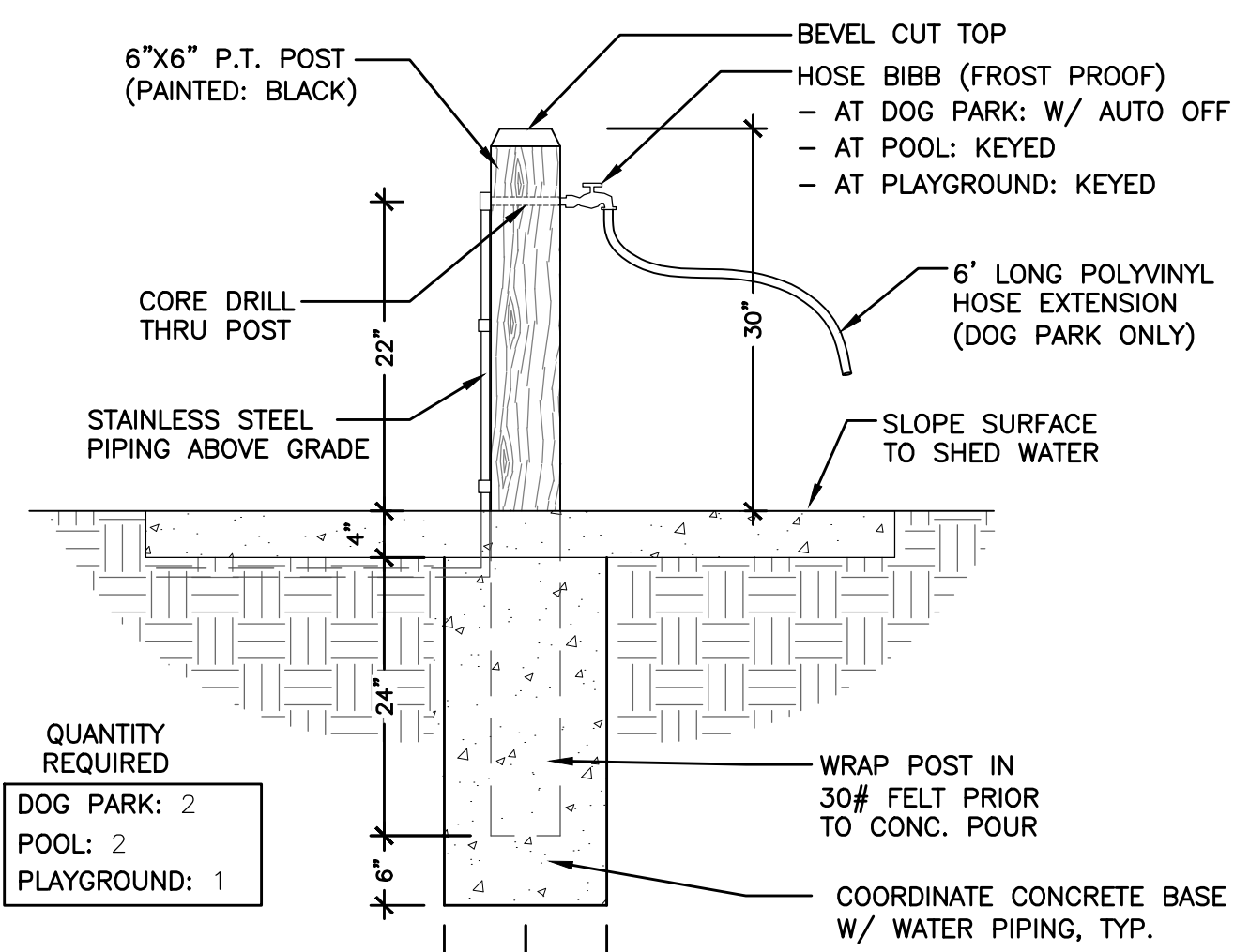
H2.1
 REVIEW SET



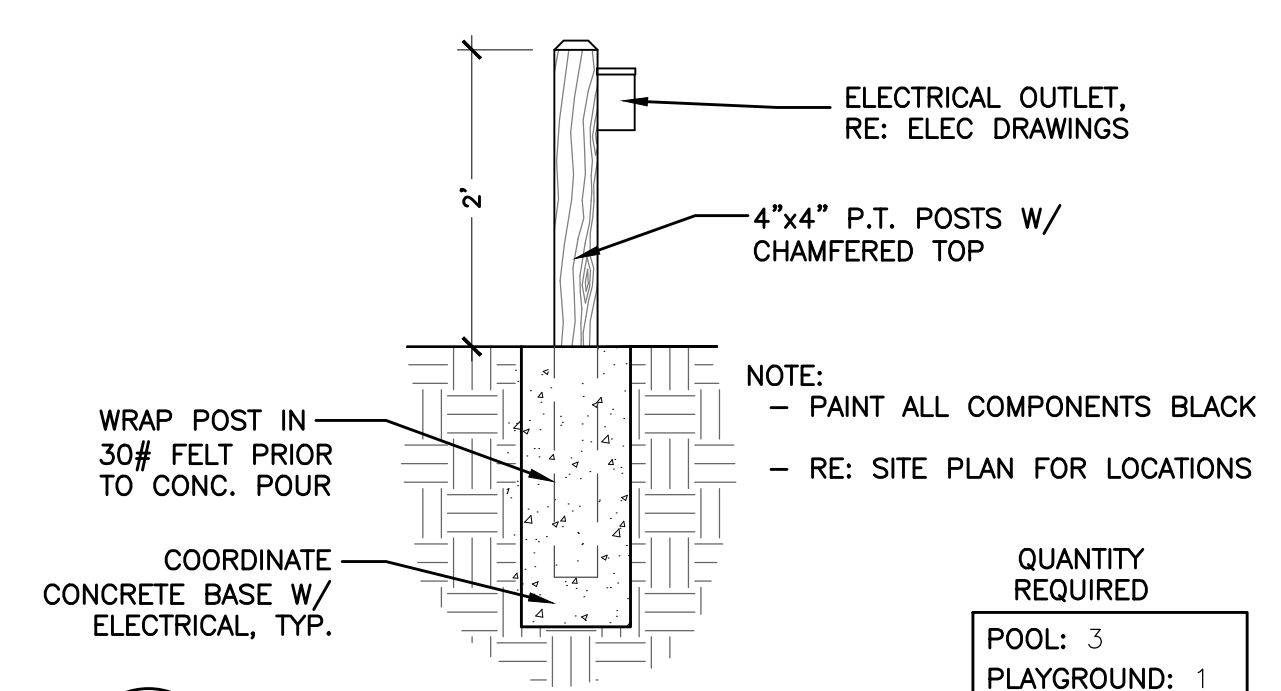
1 POOL: EDGE SECTION
SCALE: 3/4" = 1'-0"



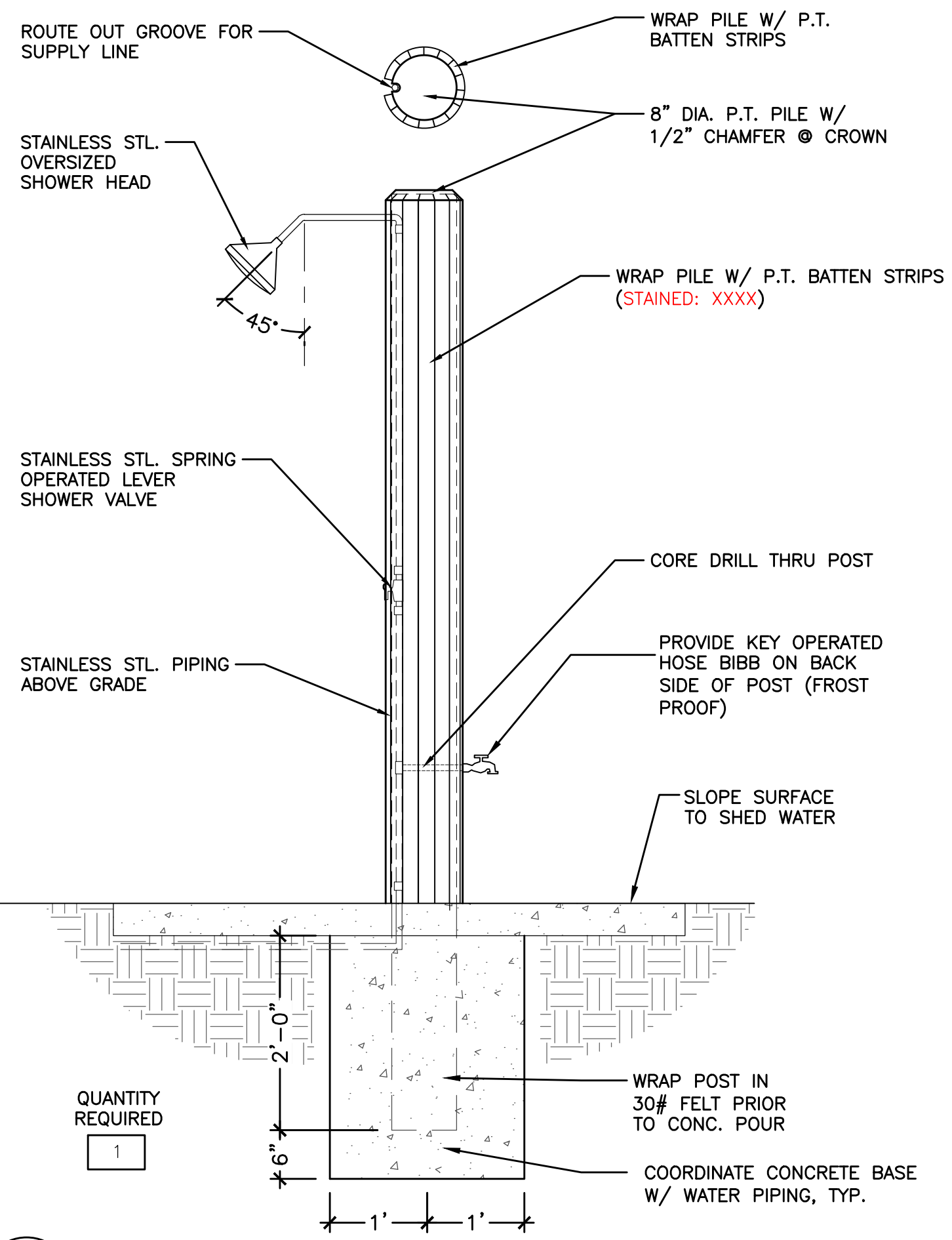
2 POOL: EDGE SECTION
SCALE: 3/4" = 1'-0"



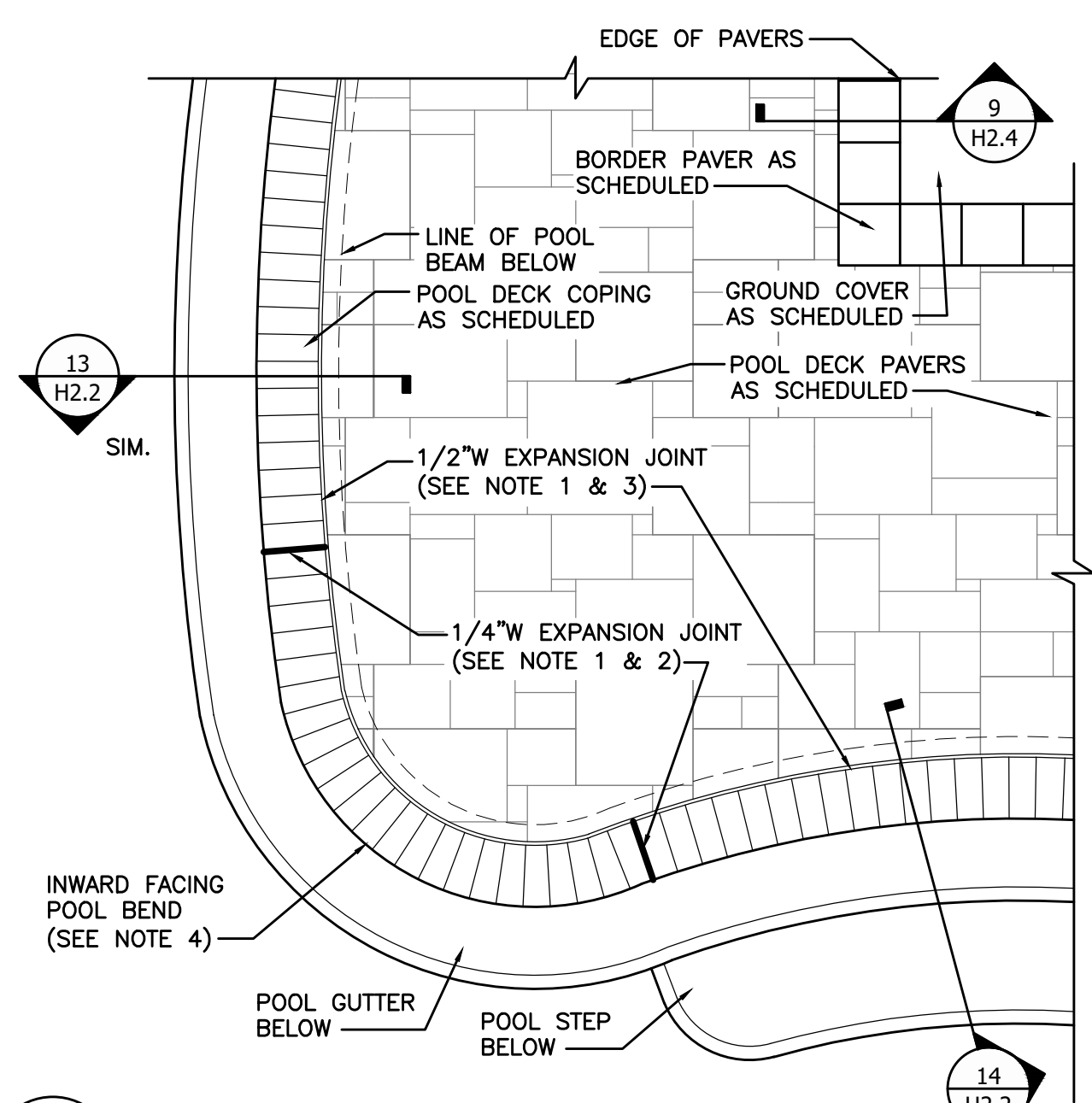
3 HOSE BIB SECTION
SCALE: 3/4" = 1'-0"



4 ELECTRICAL OUTLET
SCALE: 3/4" = 1'-0"

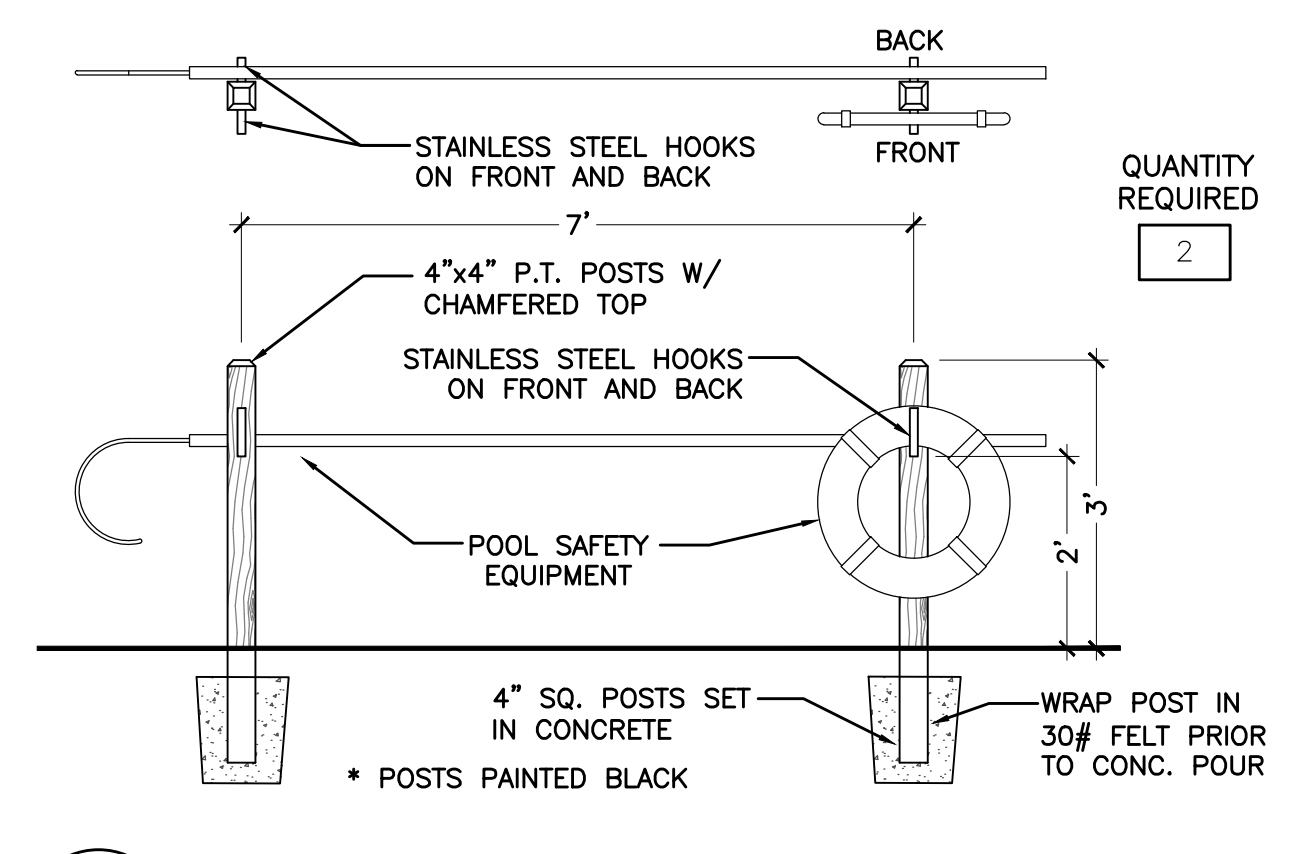


5 POOL: SHOWER SECTION
SCALE: 3/4" = 1'-0"

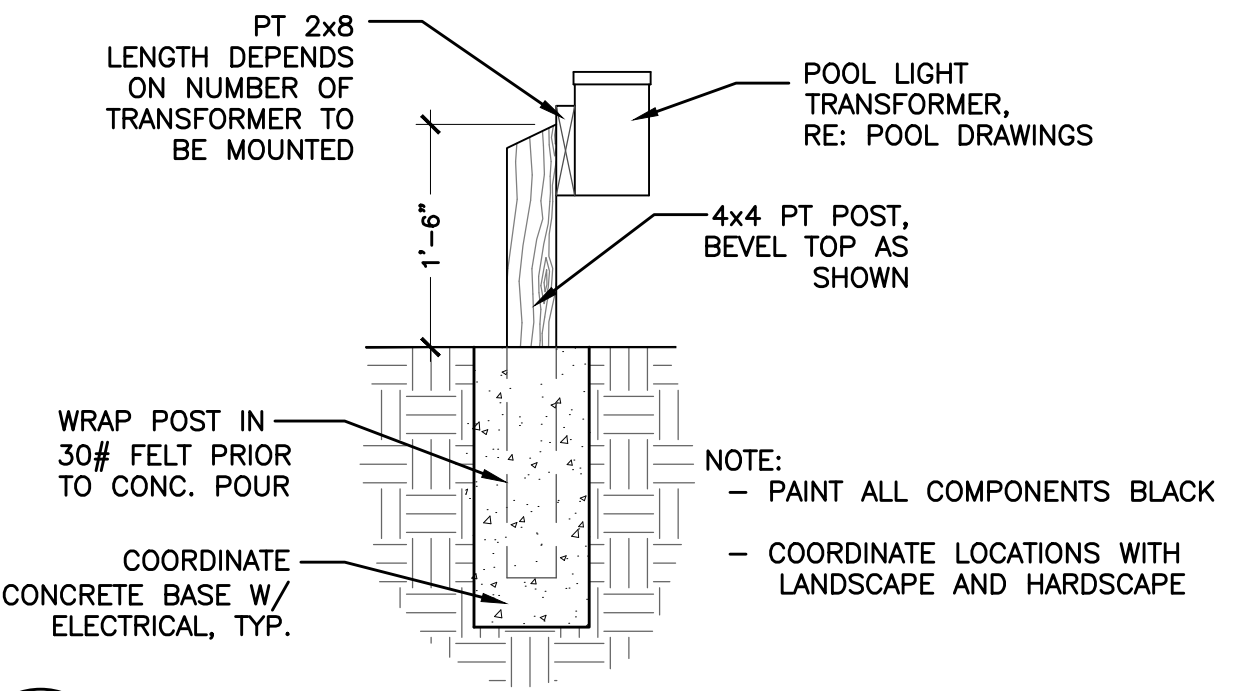


6 POOL: EXPANSION JOINT PLAN
SCALE: 1/2" = 1'-0"

GENERAL NOTES:
1. ALL PAVER EXPANSION JOINTS PER PAVER MANUFACTURER'S RECOMMENDATIONS. IN THE EVENT THAT PAVER MANUFACTURER'S RECOMMENDATIONS ARE NOT AVAILABLE, THEN CONTRACTOR SHALL DETERMINE "MEANS & METHODS" OR REFER TO THE "BRICK INSTITUTE OF AMERICA" GUIDELINES FOR BRICK POOL COPINGS WHICH STATES, "EXPANSION JOINTS SHOULD BE INSTALLED APPROXIMATELY EVERY TEN FEET ON CENTER ALONG THE PERIMETER OF THE POOL COPING, AS WELL AS ANY LOCATION WHERE THE PAVERS ABUT A RESTRAINING SURFACE SUCH AS A CURB OR WALL".
2. 1/4" WIDE EXPANSION JOINT - ELASTOMERIC SEALANT ON COMPRESSIBLE BACKER ROD TYP.
3. 1/2" WIDE EXPANSION JOINT - ELASTOMERIC SEALANT ON COMPRESSIBLE BACKER ROD TYP.
4. ADDITIONAL EXPANSION JOINTS ARE HIGHLY RECOMMENDED ON INWARD FACING POOL BENDS.
5. RECOMMEND MIN 1/4" GAP (TO BE GROUT FILLED) BETWEEN TOP OF BEAM TILE AND UNDERSIDE OF PAVER COPING.



7 POOL: SAFETY EQUIPT
SCALE: 1/2" = 1'-0"



8 POOL: LIGHT TRANSFORMER
SCALE: 3/4" = 1'-0"

NO.	DATE	DESCRIPTION	BY

THIS DRAWING IS AN INSTRUMENT OF SERVICE AND THE PROPERTY OF BASHAM & LUCAS DESIGN GROUP AND SHALL REMAIN THEIR PROPERTY. THE USE OF THIS DRAWING IS RESTRICTED TO THE ORIGINAL SITE FOR WHICH IT IS PREPARED AND PUBLICATION THEREOF IS EXPRESSLY LIMITED TO SUCH USE.

prepared for DREAM FINDER HOMES
MILL CREEK AMENITY
at St. Lucie County, Ft. Pierce, FL
AMENITY HARDSCAPE
HARDSCAPE DETAILS

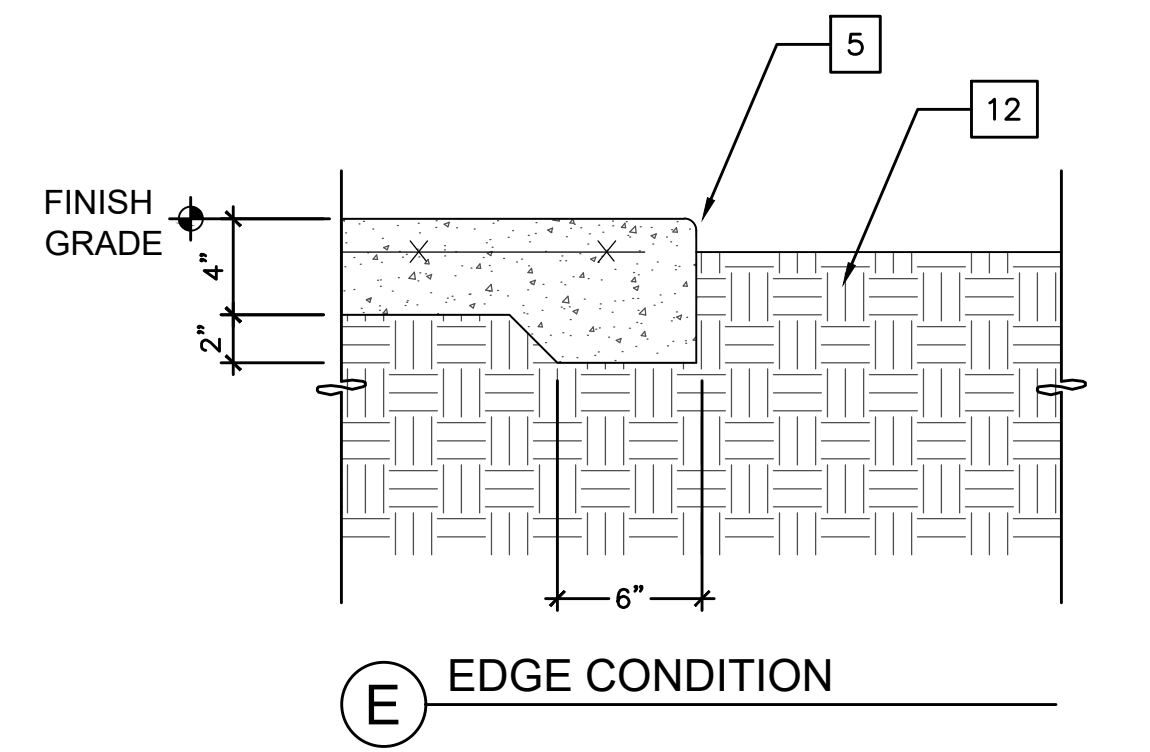
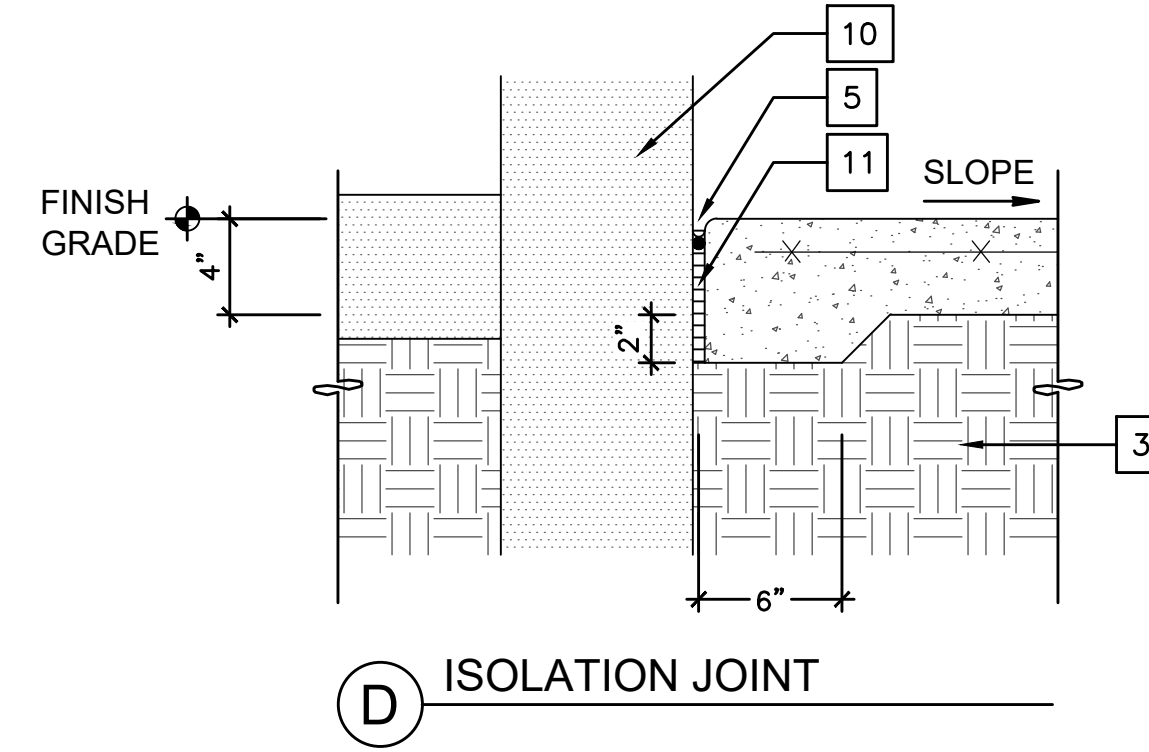
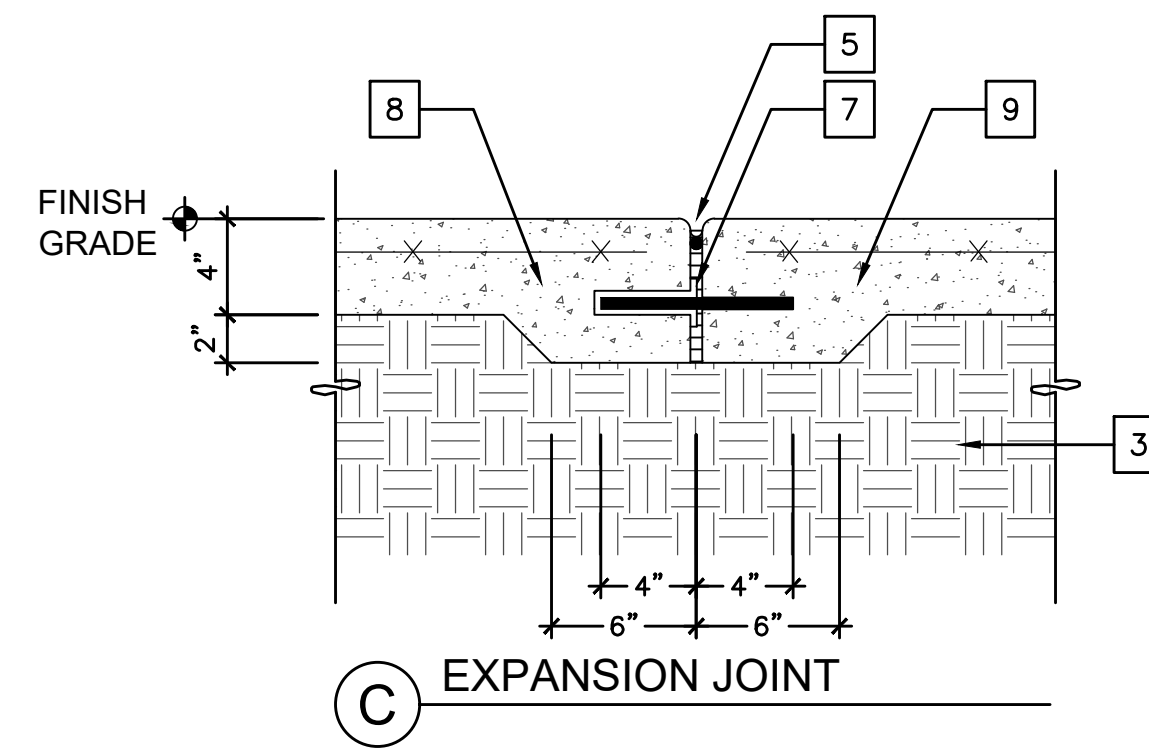
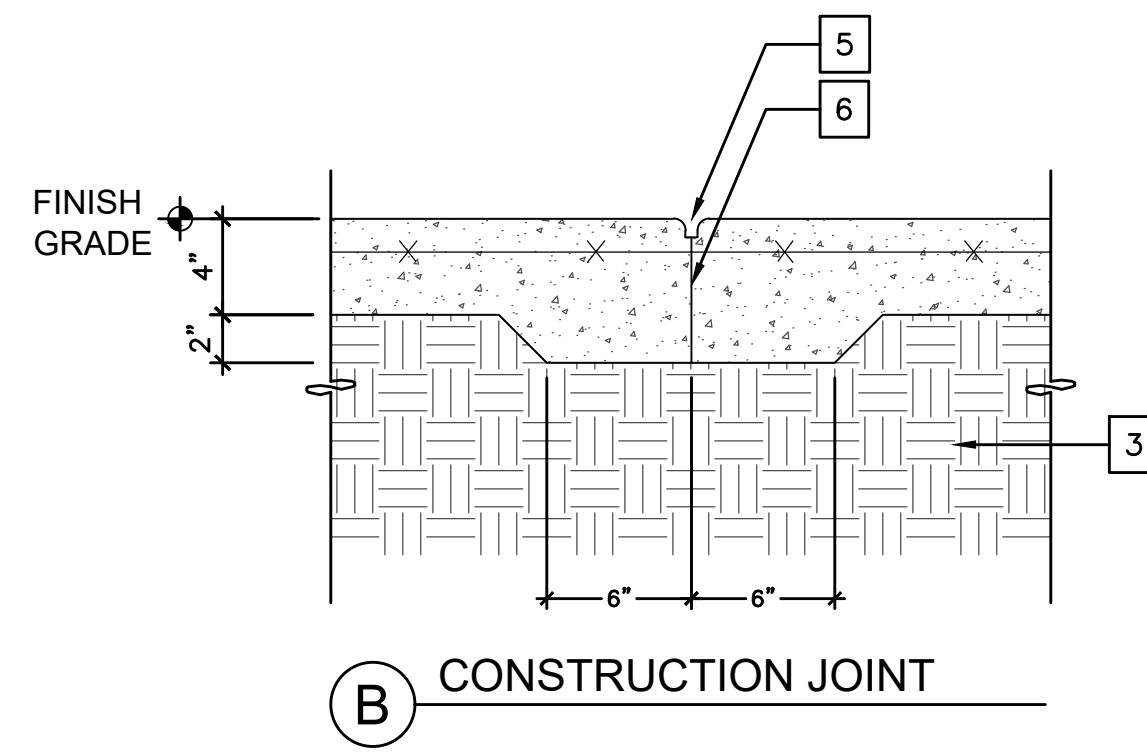
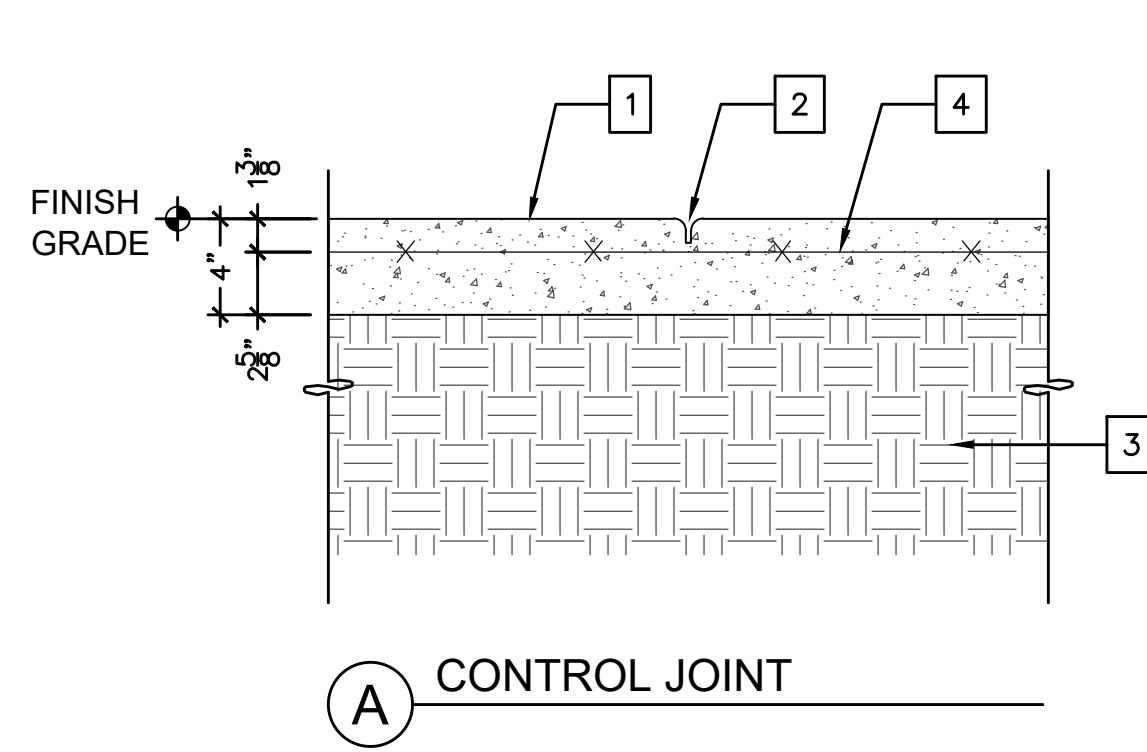


BASHAM & LUCAS
DESIGN GROUP, INC.
7645 GATE PARKWAY SUITE 101
JACKSONVILLE, FLORIDA 32256
(904) 731-2323 • bashamlucas.com
LN: AR0016514 • LA6666906

NOT FOR CONSTRUCTION

DRAWN BY CB
CHECKED BY XXX
DATE 11-14-24
JOB NO. 24-40

H2.2
REVIEW SET



KEY NOTES

- 1 CAST-IN-PLACE CONCRETE (3,000 PSI). REFER TO HARDSCAPE PLAN FOR LAYOUT AND LOCATION.
- 2 1/4" SAWCUT CONTROL JOINT, 1" DEEP TYP.
- 3 COMPACTED SUB-GRADE
- 4 4" SLAB ON GRADE WITH 6x6W 1.4W 1.4W W.W.F. F_c=3,000 PSI

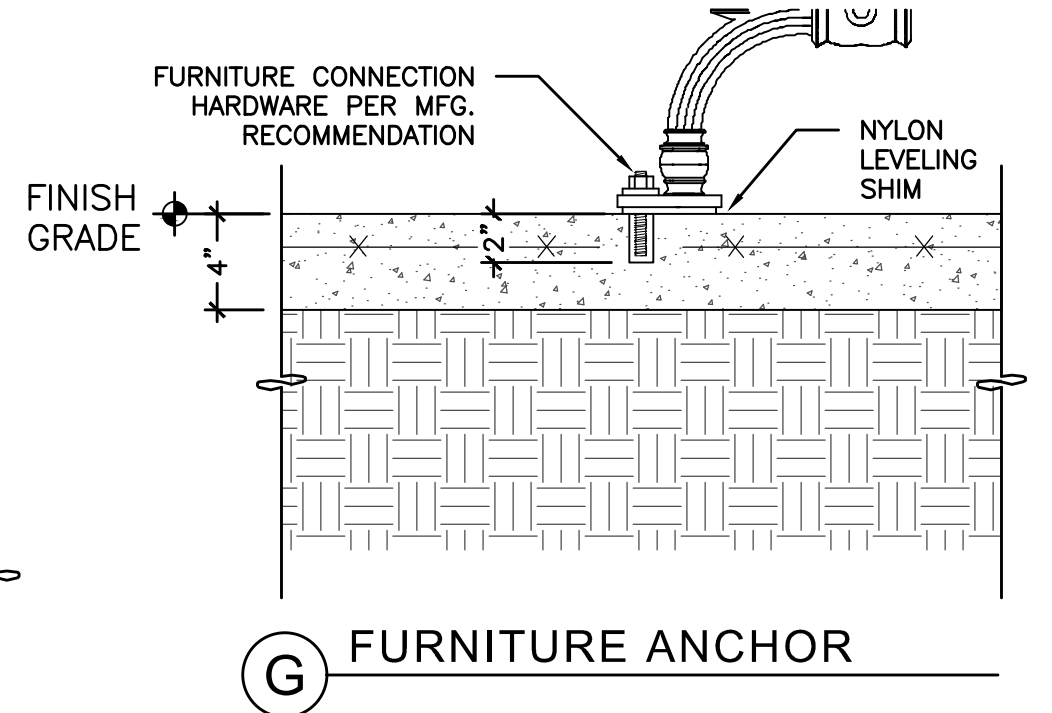
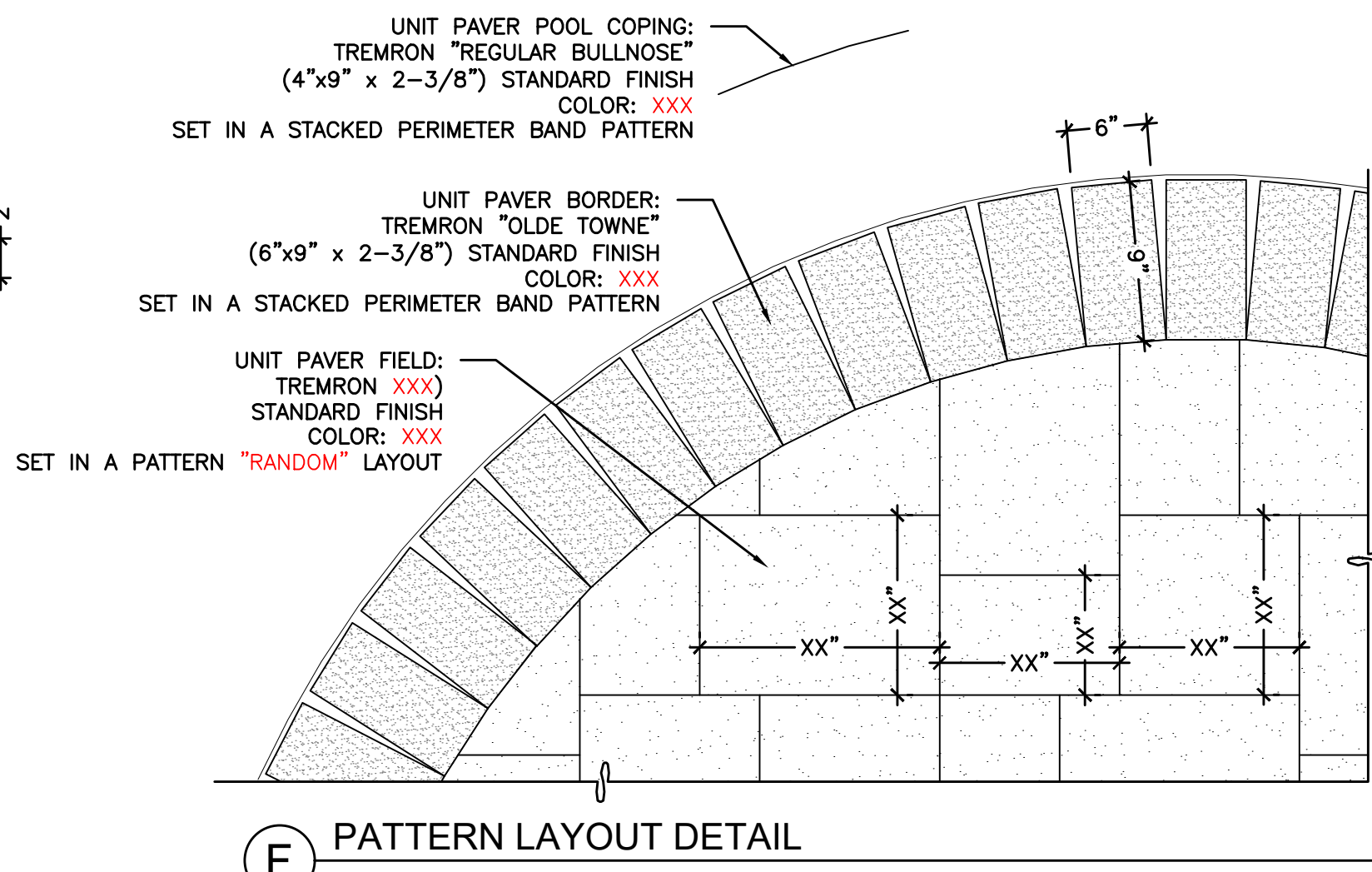
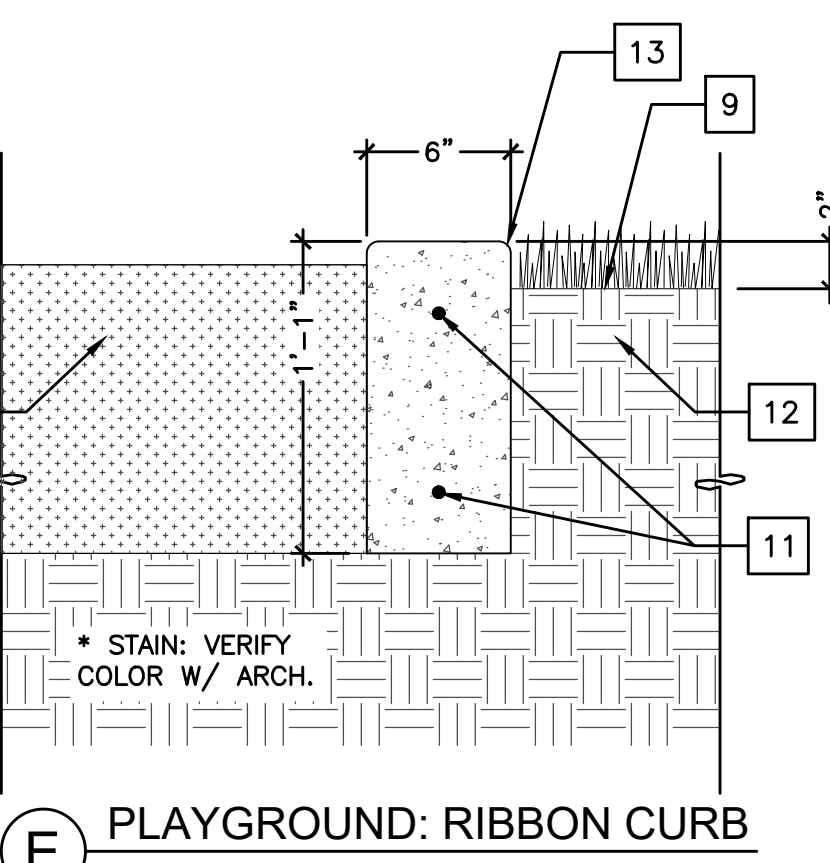
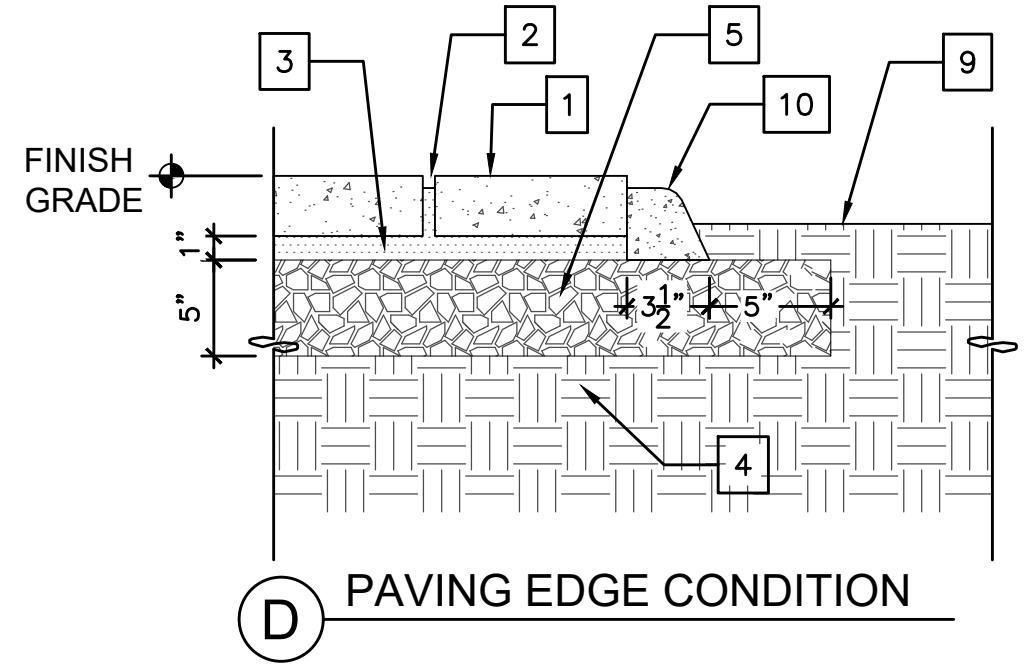
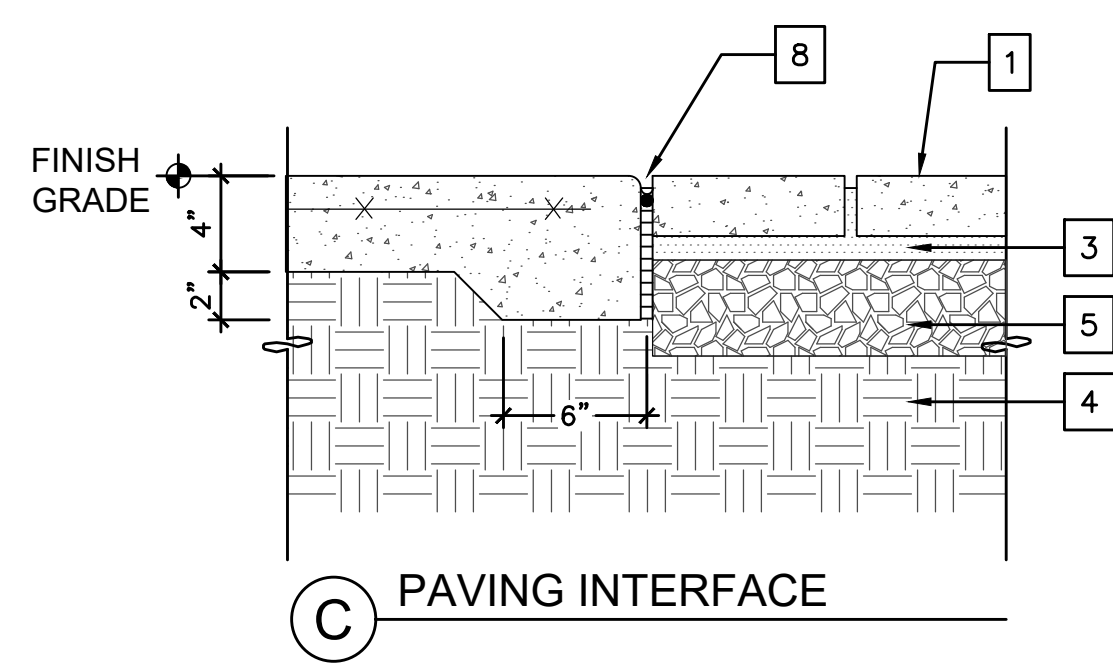
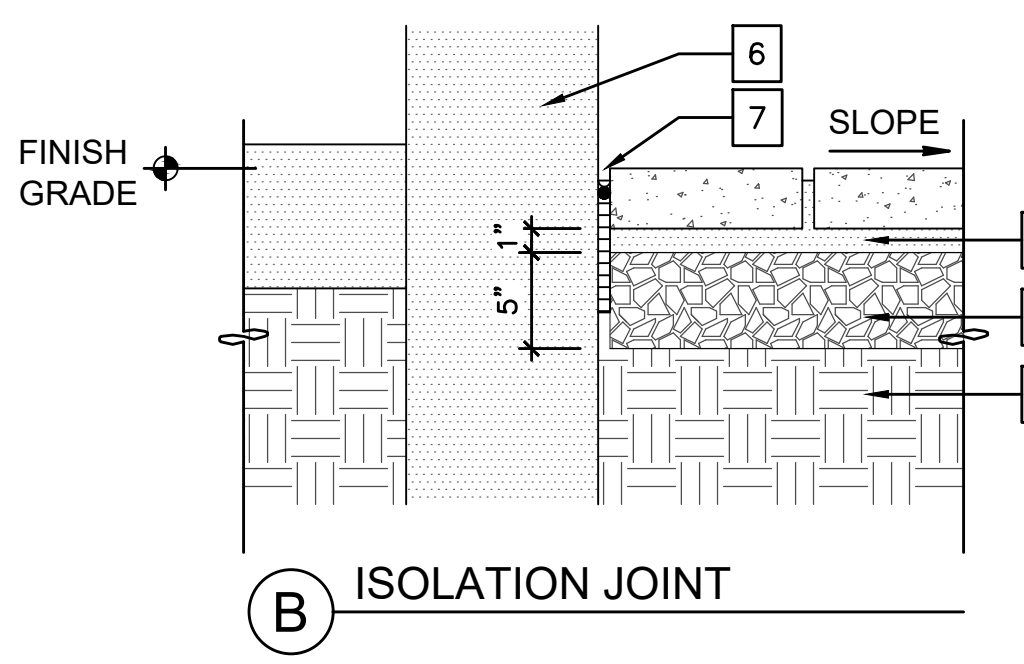
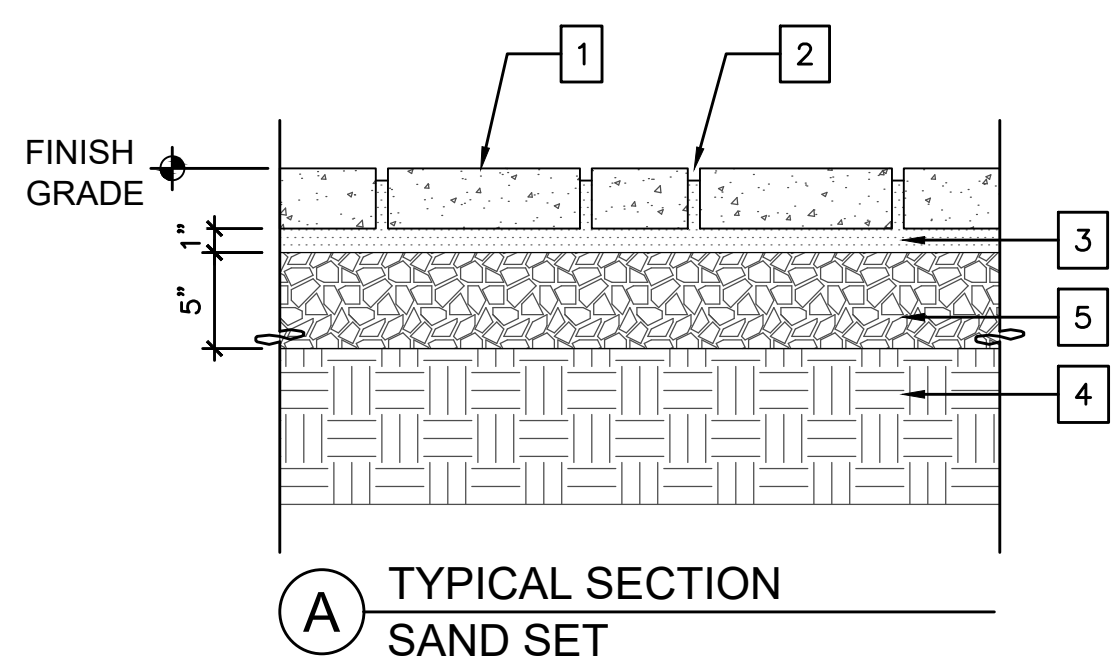
- 5 1/4" TOOLED RADIUS
- 6 APPLY BOND BREAKER TO CURED / EXISTING SURFACE
- 7 1/2" FULL DEPTH EXPANSION JOINT WITH BACKER ROD AND SEALANT, JOINT SEALANT COLOR TO MATCH ADJ. PAVING
- 8 PREMOLDED DOWEL SLEEVE, 18" O.C., CENTER IN SLAB, PERPENDICULAR TO JOINT.

- 9 1/2" DIA. X 8" SMOOTH STAINLESS STEEL DOWEL
- 10 VERTICAL ELEMENT (CONTRACTOR IS RESPONSIBLE FOR PROTECTING ADJACENT SURFACES)
- 11 3/8" FULL DEPTH EXPANSION JOINT WITH BACKER ROD AND SEALANT, JOINT SEALANT COLOR TO MATCH ADJ. PAVING
- 12 ADJACENT PLANTING AREA, HOLD GRADE 2" BELOW FINISH ELEVATION OF PAVING, SLOPE AWAY FROM PAVING

NOTE:

- 1. ALL CONCRETE SIDEWALKS TO MATCH THE EXISTING SITE SIDEWALKS IN COLOR AND FINISH.
- 2. MAXIMUM SPACING BETWEEN CONTROL JOINTS IS 100 SF
- 3. MAXIMUM SPACING BETWEEN EXPANSION JOINTS IS 400 SF
- 4. CONTRACTOR SHALL PROVIDE ISOLATION JOINTS BETWEEN CONCRETE PAVEMENT AND ALL FIXED VERTICAL SITE ELEMENTS, INCLUDING BUT NOT LIMITED TO: BUILDINGS, WALLS, CURBS, STEPS AND CHEEK WALLS, LIGHT POLE FOUNDATIONS, GRAPHIC ELEMENT FOUNDATIONS, ETC.

1 PEDESTRIAN CONCRETE PAVING



SCALE: 1-1/2" = 1'-0"

KEY NOTES

- 1 UNIT PAVER 2-3/8" MIN. THICKNESS SET HAND-TIGHT, REFER TO PAVING SCHEDULE FOR PATTERN, COLOR AND SIZE.
- 2 SWEEP JOINTS WITH FINE MASON SAND
- 3 COARSE CONCRETE SAND SETTING BED (1/2" MIN., 1" MAX.)
- 4 COMPACTED SUB-GRADE
- 5 COMPACTED CRUSHCONCRETE BASE (DEPTH AS NOTED)

- 6 VERTICAL ELEMENT (CONTRACTOR IS RESPONSIBLE FOR PROTECTING ADJACENT SURFACES)
- 7 3/8" FULL DEPTH EXPANSION JOINT WITH BACKER ROD AND SEALANT, JOINT SEALANT COLOR TO MATCH ADJ. PAVING
- 8 1/2" FULL DEPTH EXPANSION JOINT WITH BACKER ROD AND SEALANT, JOINT SEALANT COLOR TO MATCH ADJ. PAVING
- 9 ADJACENT PLANTING AREA, HOLD GRADE 2" BELOW FINISH ELEVATION OF PAVING, SLOPE AWAY FROM PAVING
- 10 CAST IN PLACE CONCRETE EDGE RESTRAINT

- 11 STAINED CONCRETE VERTICAL FACE CURB W/ #4 BARS CONT.
 - 12 PLAYGROUND MULCH (VERIFY DEPTH WITH MANUFACTURER)
 - 13 1/2" RADIUS
- NOTE:**
- 1. CONTRACTOR SHALL PROVIDE ISOLATION JOINTS BETWEEN BRICK PAVEMENT AND ALL FIXED VERTICAL SITE ELEMENTS, INCLUDING BUT NOT LIMITED TO: BUILDINGS, WALLS, CURBS, STEPS AND CHEEK WALLS, LIGHT POLE FOUNDATIONS, GRAPHIC ELEMENT FOUNDATIONS, ETC.

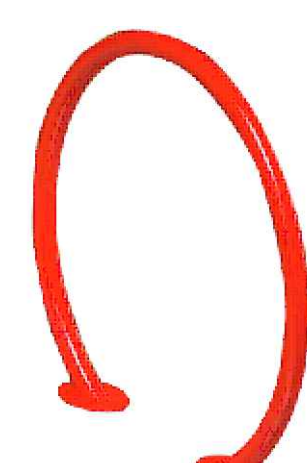
2 PEDESTRIAN BRICK PAVING

SCALE: 1-1/2" = 1'-0"



MANUFACTURED BY:
SITESCAPES
P.O. Box 22326
Lincoln, NE
(888) 331-9464
www.sitescapesonline.com

BENCH W/ BACK
MODEL: AV1-1010
LENGTH: 6'-0"
COLOR: XXX



MANUFACTURED BY:
WAUSAU TILE
PO Box 1520
Wausau, WI 54402
(715) 359-3121
www.wausautile.com

BIKE RACK
SIZE: 2 SPACES
MODEL: MF9024
COLOR: XXX



MANUFACTURED BY:
SITESCAPES
P.O. Box 22326
P.P. Lincoln, NE
(888) 331-9464
www.sitescapesonline.com

TRASH RECEPTACLE
SIZE: 36 GALLON
MODEL: CITYVIEW
COLOR: XXX



MANUFACTURED BY:
DOGIPOT
5340 YOUNG PINE
ROAD, SUITE 8
ORLANDO, FL 32829
(407) 888-4627
www.dogipot.com

ALUMINUM DOGIPOT®
HEADER PAK PET
STATION (1003HPA-L)

* SET POST IN
CONCRETE PER MNFR

3 PARK BENCH A

QUANTITY
REQUIRED
7
SCALE: NTS

4 BIKE RACK

QUANTITY
REQUIRED
3
SCALE: NTS

5 WASTE RECEPTACLE

QUANTITY
REQUIRED
4
SCALE: NTS

6 PET WASTE STATION

QUANTITY
REQUIRED
2
SCALE: NTS

REVISIONS

NO.	DATE	DESCRIPTION	BY

THIS DRAWING IS AN INSTRUMENT OF SERVICE AND THE PROPERTY OF BASHAM & LUCAS DESIGN GROUP AND SHALL REMAIN THEIR PROPERTY. THE USE OF THIS DRAWING IS RESTRICTED TO THE ORIGINAL SITE FOR WHICH IT IS PREPARED AND PUBLICATION THEREOF IS EXPRESSLY LIMITED TO SUCH USE.

prepared for DREAM FINDER HOMES
MILL CREEK AMENITY
at St. Lucie County, Ft. Pierce, FL
AMENITY HARDSCAPE
HARDSCAPE DETAILS



BASHAM & LUCAS
DESIGN GROUP, INC.

7645 GATE PARKWAY SUITE 101
JACKSONVILLE, FLORIDA 32256
(904) 731-2323 • bashamlucas.com
LN: AR0016514 • LA6666906

NOT FOR
CONSTRUCTION

DRAWN BY	CB
CHECKED BY	XXX
DATE	11-14-24
JOB NO.	24-40

H2.3

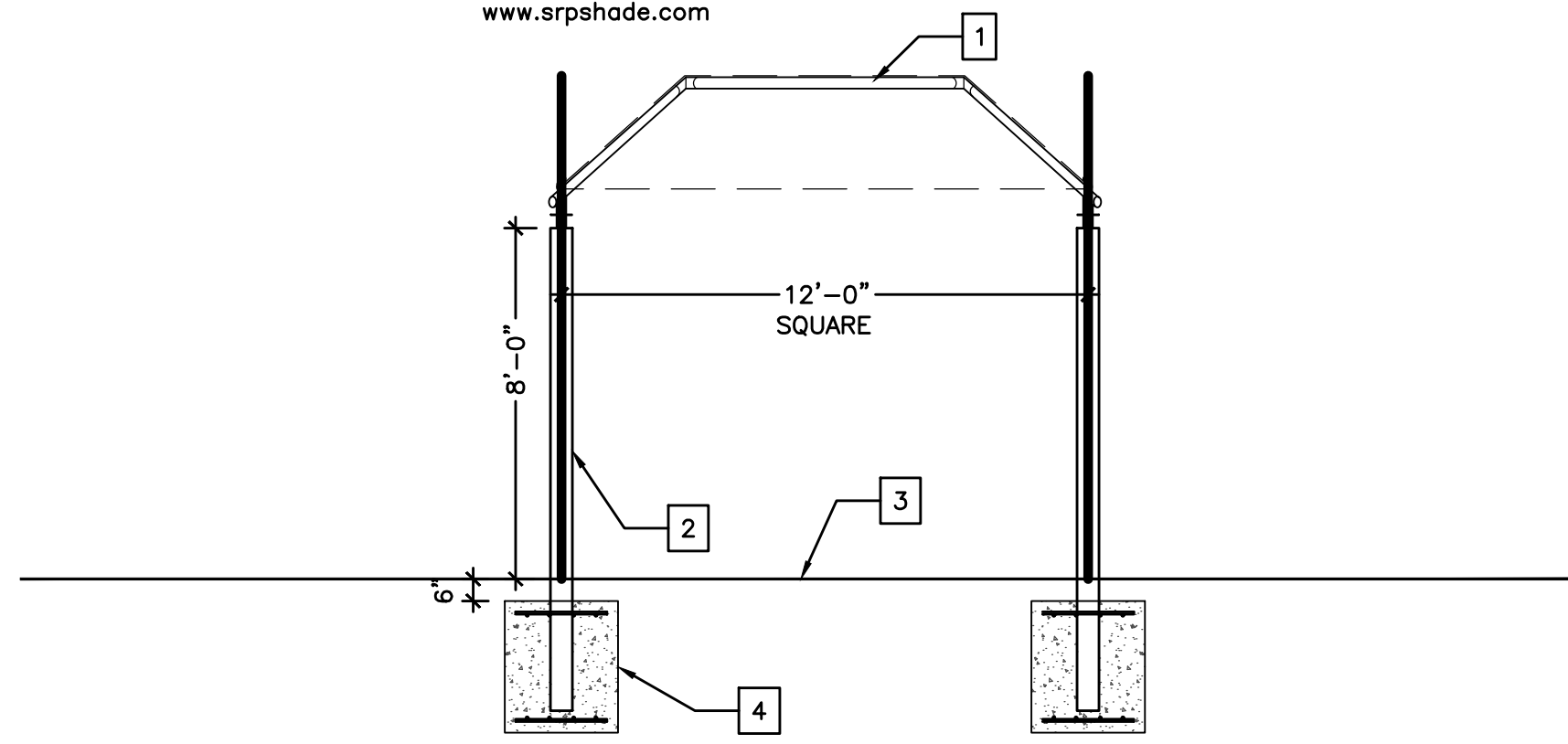
REVIEW SET

KEY NOTES

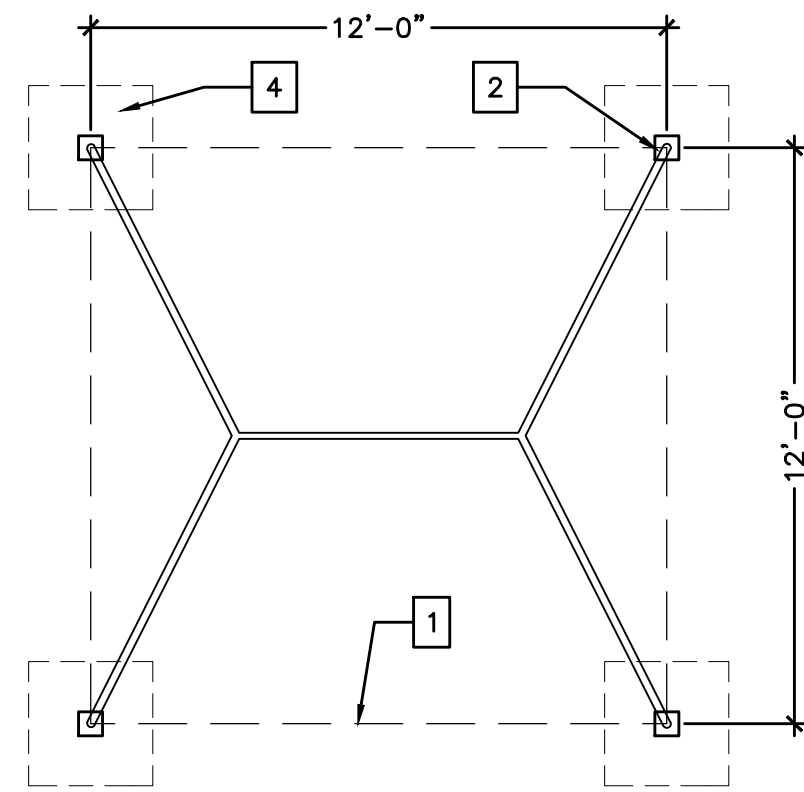
- 1 12' x 12' PRE-FIN MET. AND FABRIC SHADE STRUCTURE ("SUPERIOR RECREATIONAL SHADE" OR APRVD EQ.) (FABRIC COLOR: XXXX)
- 2 PREFIN. METAL COLUMN PER SHADE STRUCTURE MANUF. (COLOR: XXXX)
- 3 GROUND FINISH AS SCHEDULED
- 4 REINF. CONC. FOOTING, SIZE & REINF. PER SHADE STRUCTURE MANUFACTURERS STRUCTURAL ENGINEERING AND SHOP DRAWINGS TYP.

NOTES:
 1. INSTALLATION TO BE COMPLETED IN ACCORDANCE WITH MANUFACTURER'S SPECIFICATIONS.
 2. THIS DRAWING IS INTENDED FOR USE BY ARCHITECTS, ENGINEERS, CONTRACTORS, CONSULTANTS AND DESIGN PROFESSIONALS FOR PLANNING PURPOSES ONLY. THIS DRAWING MAY NOT BE USED FOR CONSTRUCTION.

SUPERIOR RECREATIONAL PRODUCTS
 1-800-327-8774
 www.srpshade.com



A ELEVATION VIEW

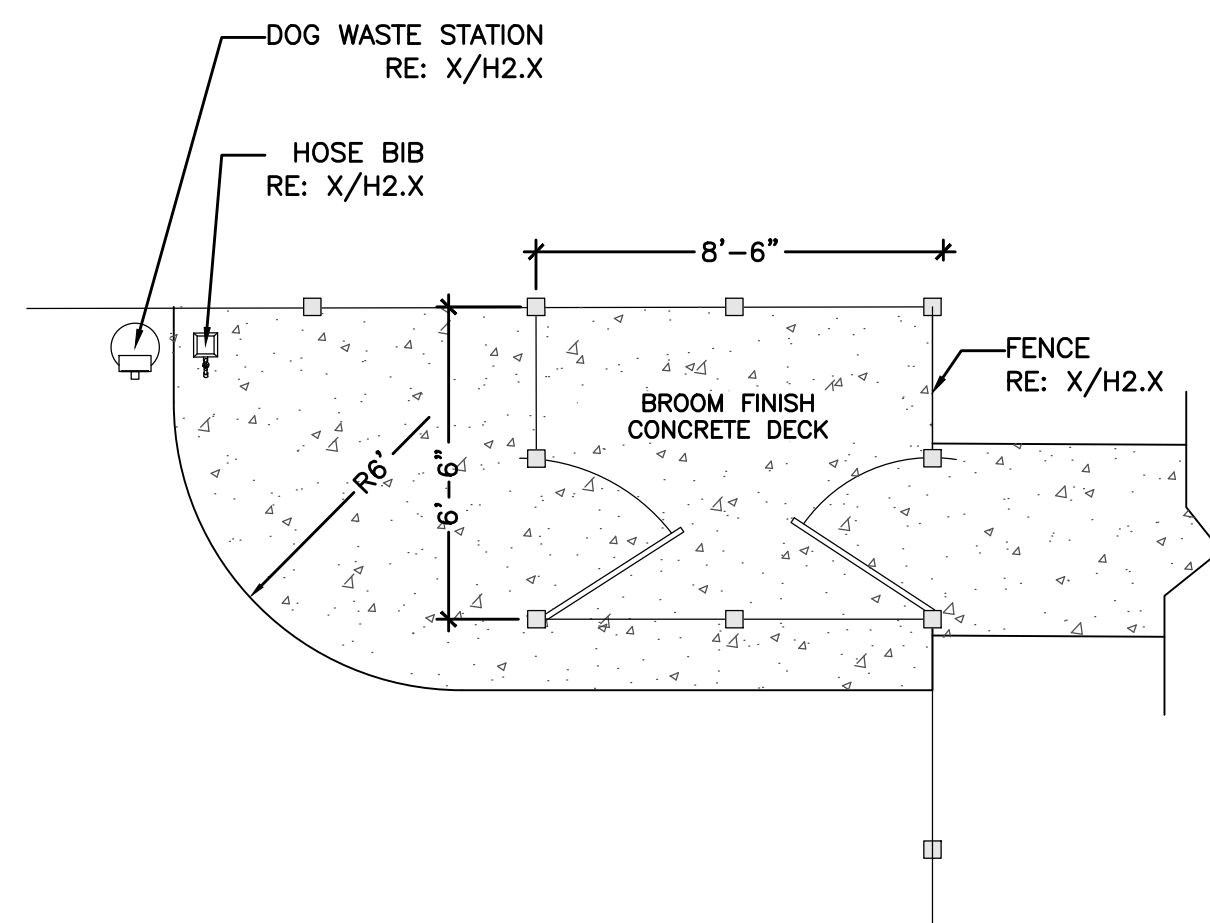


B PLAN VIEW

QUANTITY
 REQUIRED
 1

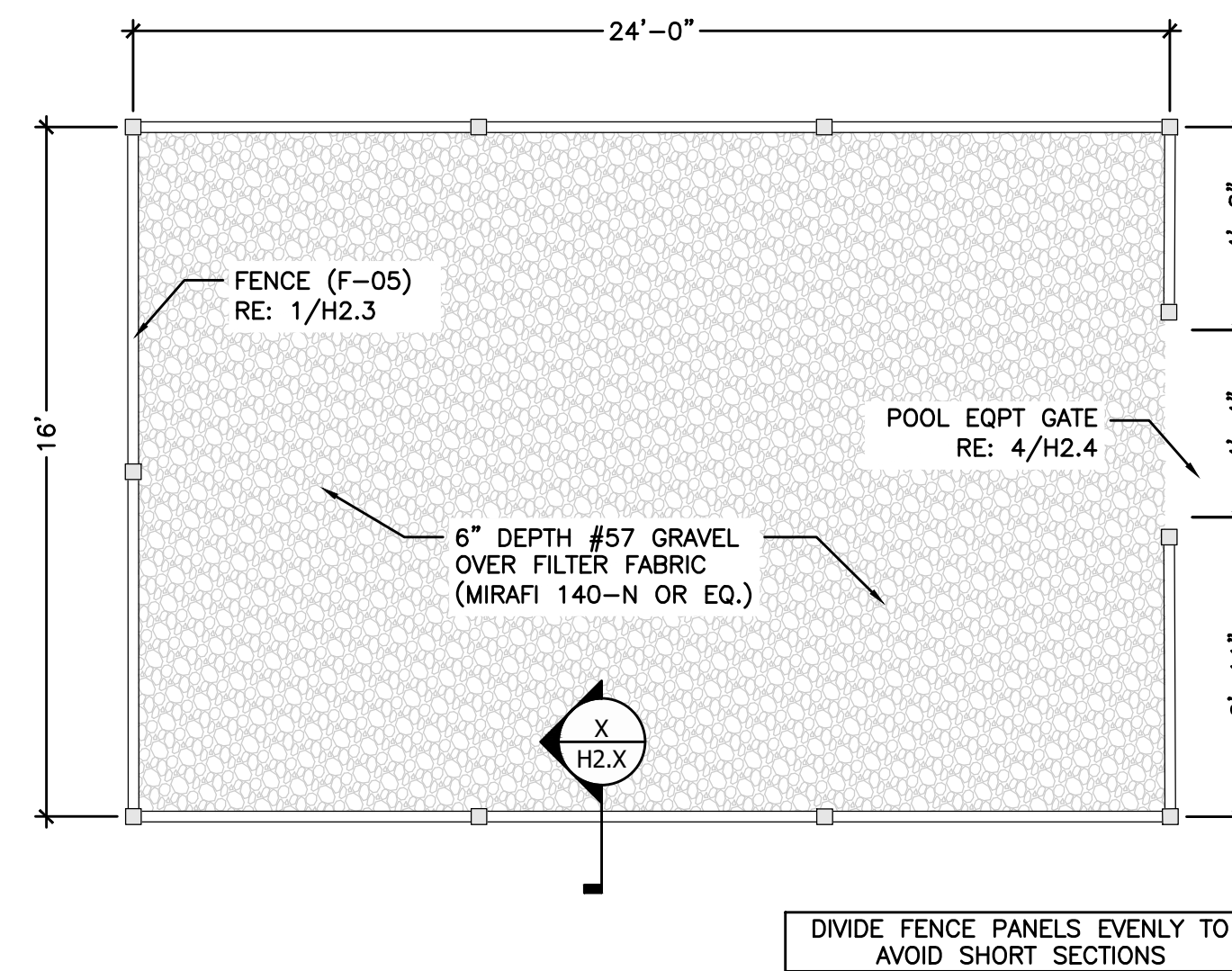
SCALE: 1/4" = 1'-0"

1 4 POST SHADE STRUCTURE: 12' x 12' DOG PARK (SH-03)



2 DOG PARK: SALLY PORT
 PLAN

SCALE: 1/4" = 1'-0"



3 POOL EQUIPMENT ENCLOSURE
 PLAN

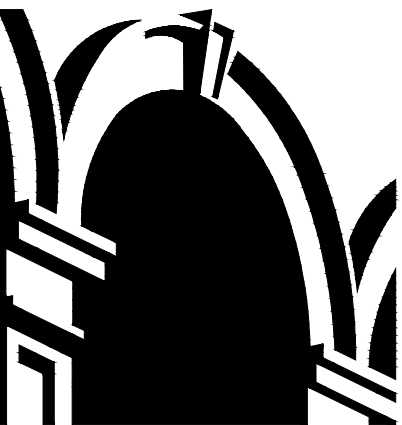
SCALE: 1/4" = 1'-0"

REVISIONS

NO.	DATE	DESCRIPTION	BY

THIS DRAWING IS AN INSTRUMENT OF SERVICE AND THE PROPERTY OF BASHAM & LUCAS DESIGN GROUP AND SHALL REMAIN THEIR PROPERTY. THE USE OF THE DRAWING IS RESTRICTED TO THE ORIGINAL SITE FOR WHICH IT IS PREPARED AND PUBLICATION THEREOF IS EXPRESSLY LIMITED TO SUCH USE.

prepared for DREAM FINDER HOMES
MILL CREEK AMENITY
 at St. Lucie County, Ft. Pierce, FL
AMENITY HARDSCAPE
 HARDSCAPE DETAILS



BASHAM & LUCAS
 DESIGN GROUP, INC.
 7645 GATE PARKWAY SUITE 101
 JACKSONVILLE, FLORIDA 32256
 (904) 731-2323 • bashamlucas.com
 LN: AR0016514 • LA6666906

NOT FOR
 CONSTRUCTION

DRAWN BY CB
 CHECKED BY XXX
 DATE 11-14-24
 JOB NO. 24-40

H2.4
 REVIEW SET