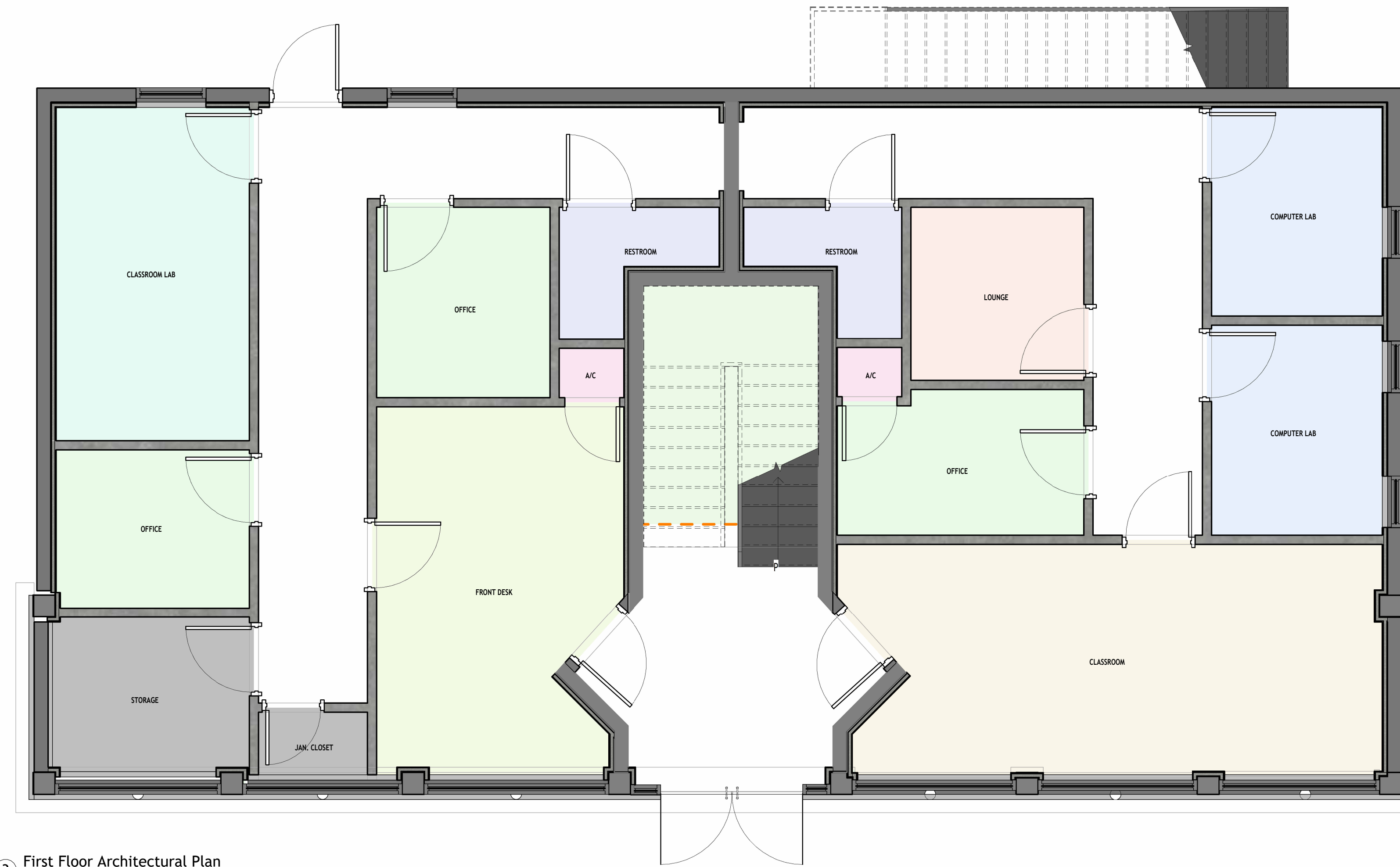




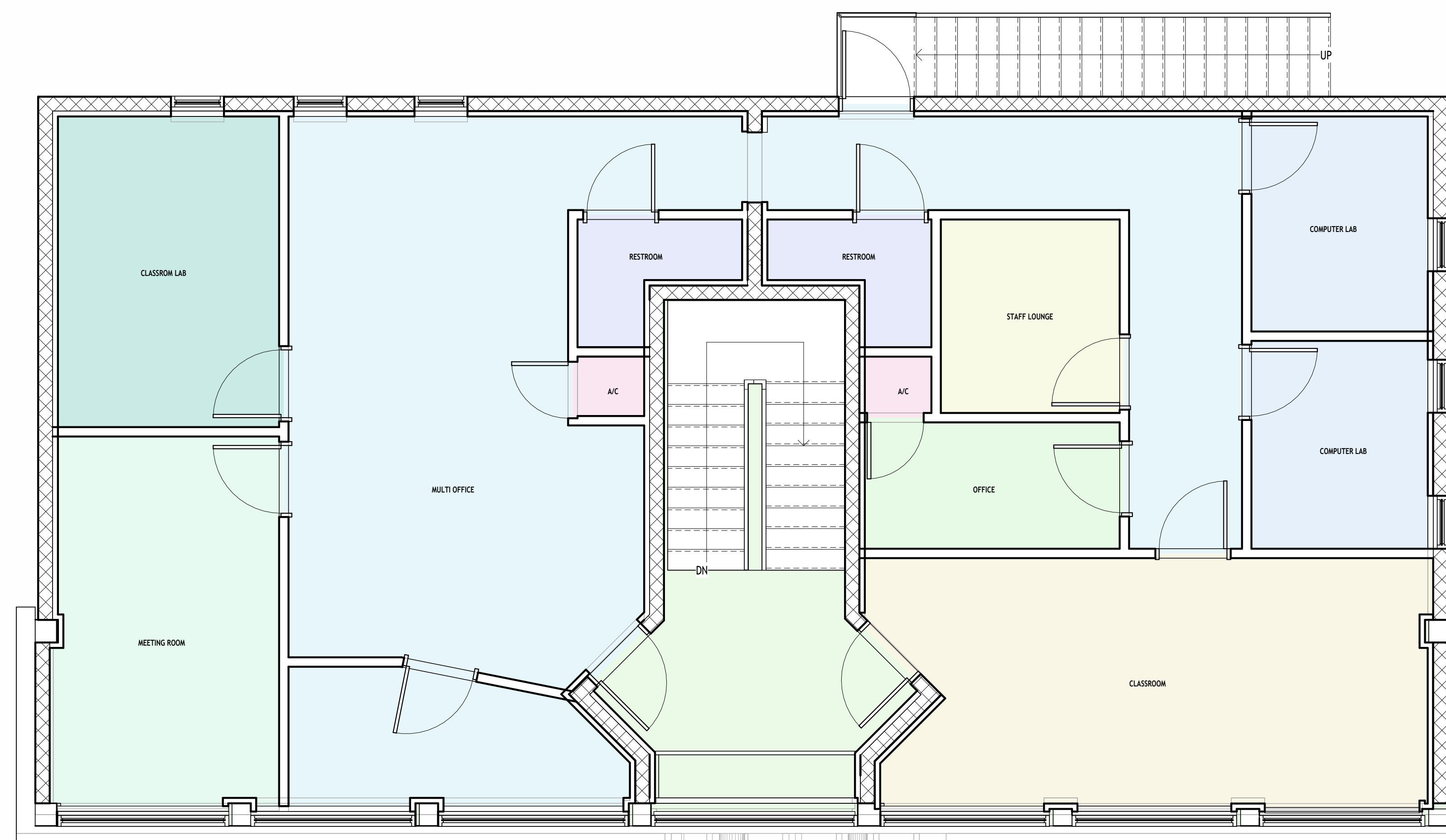
② Aspatria Institute - Parking
12" = 1'-0"



① Aspatria Institute - Street
12" = 1'-0"



③ First Floor Architectural Plan
1/4" = 1'-0"



④ Second Floor Architectural Plan
1/4" = 1'-0"



www.aspatriainstitute.com

We understand that a traditional four-year college isn't the right route for everyone, but Aspatria Institute is an excellent choice to get you on the path towards a fulfilling career. We know that life doesn't stop when you're learning. That's why we've created a curriculum that helps you maintain a balance between your education and everything else you have going on. Our hybrid programs combine in-person learning with online classes, giving our students balance and variety throughout their semesters. In addition, we offer externship opportunities that provide hands-on experience at an established medical practice.

One thing to know about Aspatria Institute: we are here to help you succeed and achieve your goals. Let us invest in you and our community's future. Enroll today, and take the first step towards your new career.

We provide opportunities and support for individuals in our local community as they develop skills towards a new career.

ALL WORK IS TO BE DONE IN ACCORDANCE WITH THE LOCAL FLORIDA BUILDING CODE 2023 8TH ED. AND ALL REGULATORY LOCAL AND GOVERNMENTAL CODES

FORT PIERCE LOCATION
4,044.00 SQFT

**FORT PIERCE
ASPATRIA**

PRESENTATION

Project Number 01

Date JULY 2025

Drawn By GR

Checked By FORT PIERCE CITY

PRES-VIEW

Scale As indicated

7/19/2025 10:05:10 AM