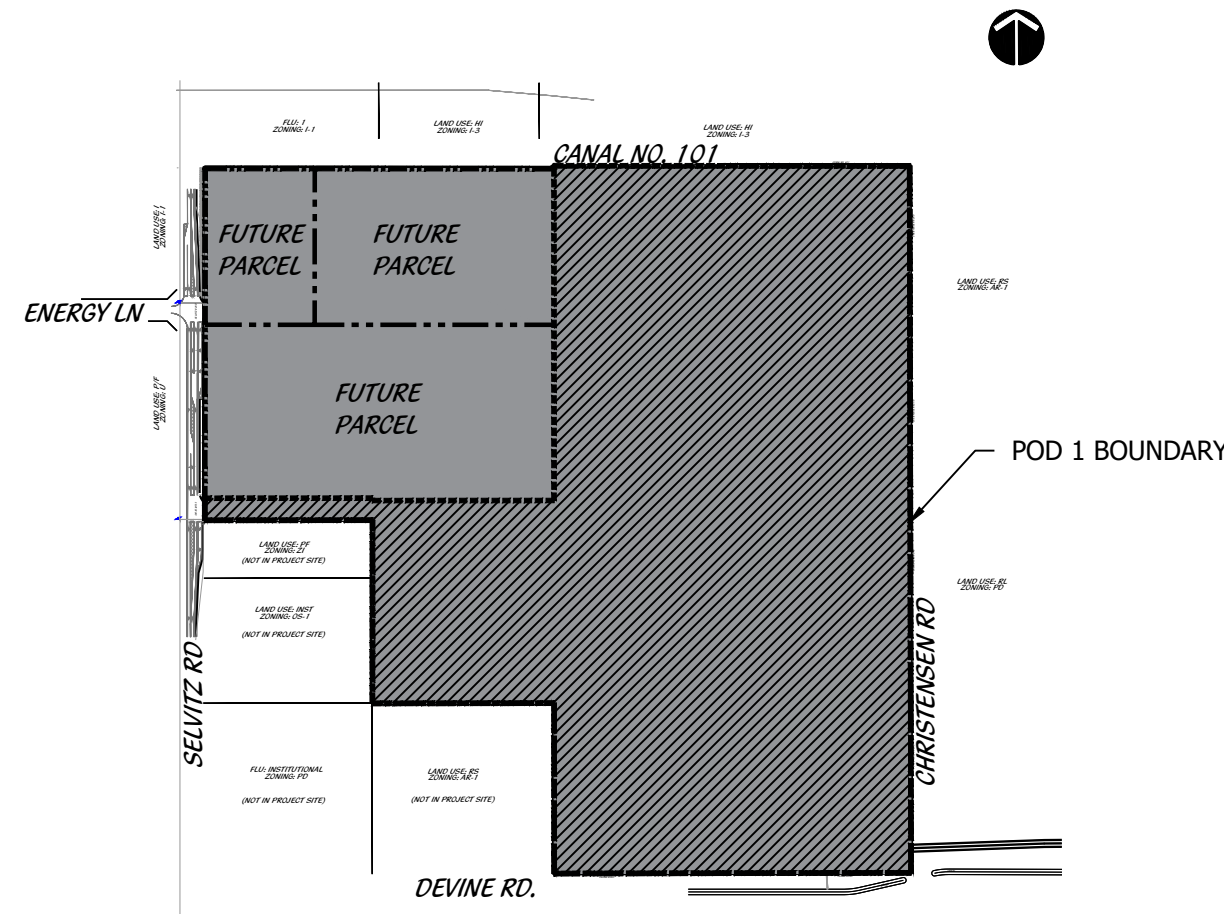


VICINITY MAP

LEGEND

- LB LANDSCAPE BUFFER
- LS LANDSCAPE SETBACK
- SB SIDEWALK
- SW TYPICAL DRAINAGE EASEMENT
- DE STOP SIGN
- DO NOT ENTER
- PEDESTRIAN CROSSING
- STREET LIGHT
- PRESERVE



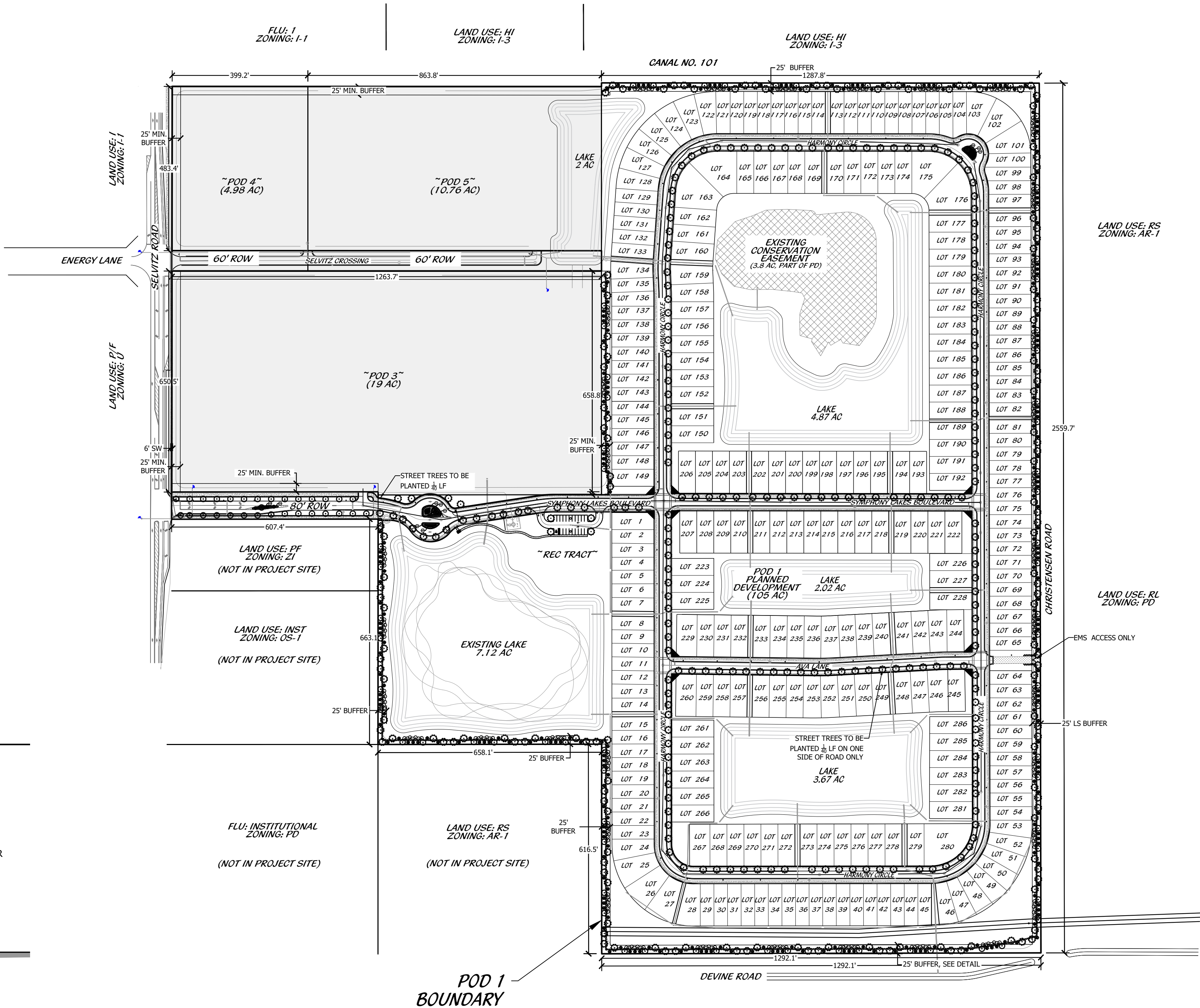
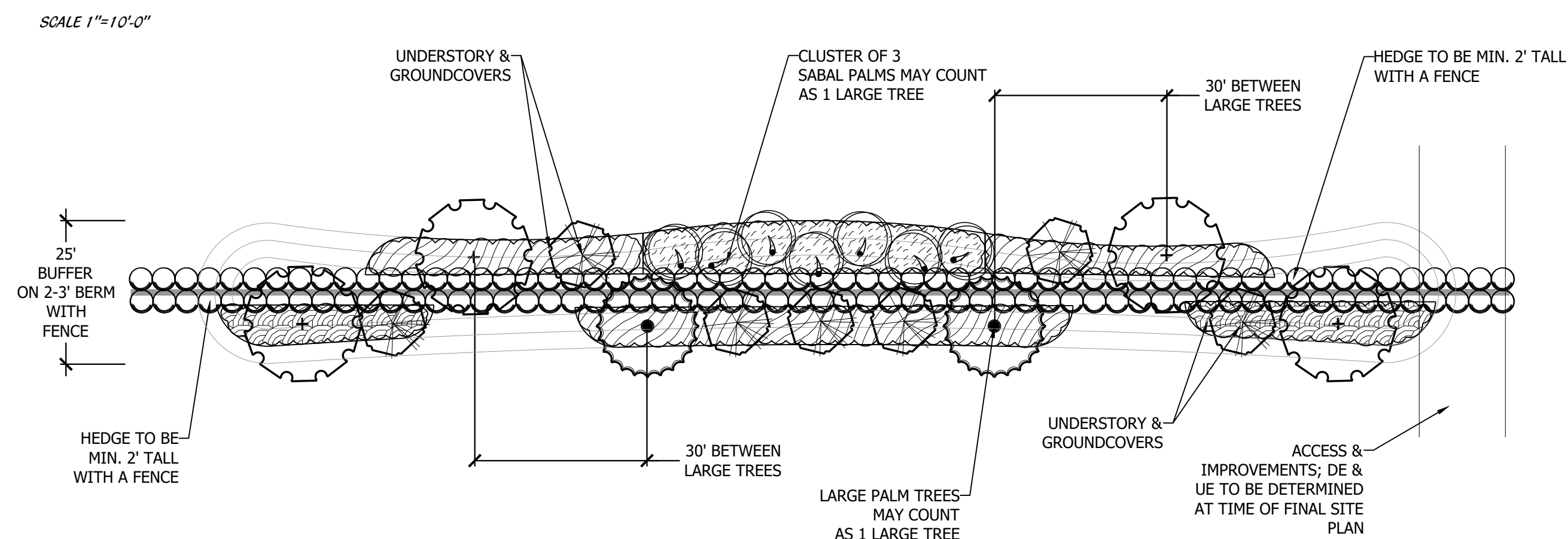
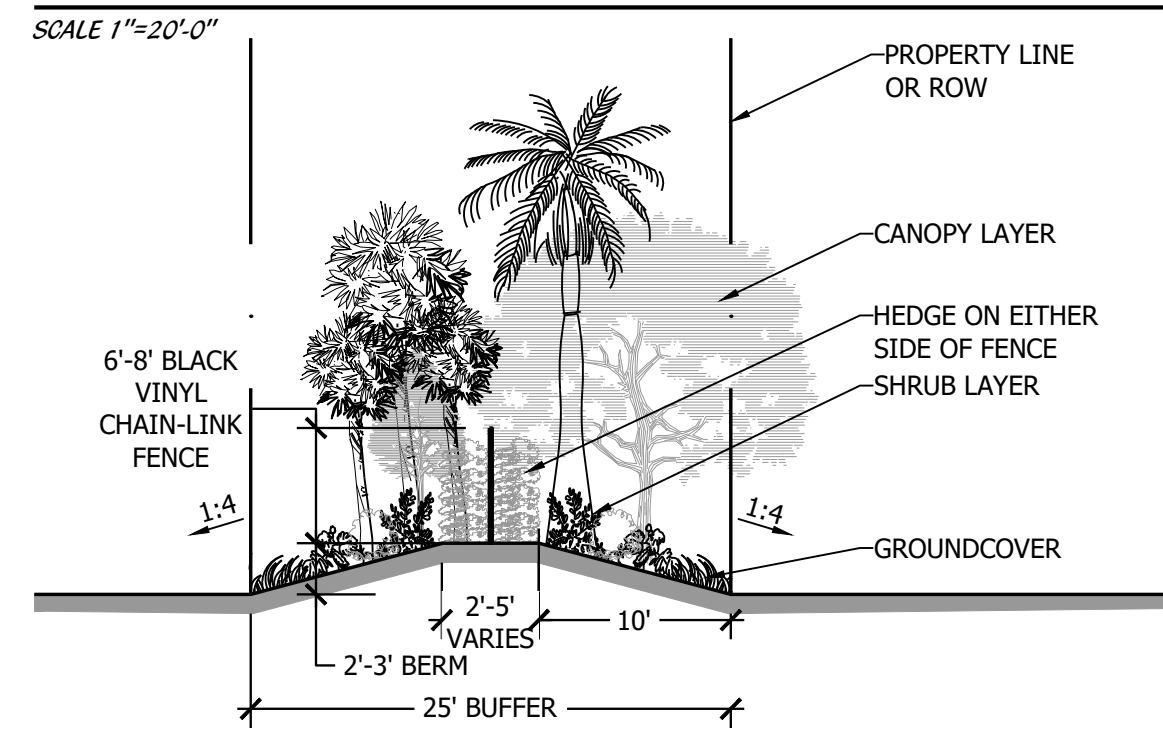
LANDSCAPE DATA

TOTAL POD 1 SITE AREA	4,596,578.78 S.F. (105 ACRES)		
STREET TREE REQUIREMENTS	LENGTH	REQUIRED	PROVIDED
1 TREE PER 40' LF	9264.27	232	232
* 2 MISTORY TREES = 1 1/2 TREE			
LANDSCAPE BUFFER REQUIREMENTS	LENGTH	REQUIRED	PROVIDED
NORTH (CANAL NO. 101) (1 TREE PER 30' LF)	1287.80	32	39
TOTAL SHRUBS (CONT. HEDGE 2 1/2' O.C.)		515	516
EAST (CHRISTENSEN RD) (1 TREE PER 30' LF)	2559.70	64	71
TOTAL SHRUBS (CONT. HEDGE 2 1/2' O.C.)		1024	1024
SOUTH (DIVINE RD) (1 TREE PER 30' LF)	1292.10	32	10
TOTAL SHRUBS (CONT. HEDGE 2 1/2' O.C.)		517	512

TYPICAL BUFFER PLANT LIST

TREES	BOTANICAL NAME	COMMON NAME	REMARKS
LH45	LIGUSTRUM JAPONICUM	JAPANESE PRIVET	MULTI-STEM, LIMB UP 2.5'
QV	QUERCUS VIRGINIANA	LIVE OAK	FULL CANOPY, 5' C.T. MIN.
PALM TREES	BOTANICAL NAME	COMMON NAME	REMARKS
RE	ROYSTONIA REGIA	ROYAL PALM	MATCHED, FLORIDA FANCY
SS2	SABAL PALMETTO	CURVED CABBAGE PALM	MIX S & C CURVED TRUNKS, SLICK, CHARACTER, UNIQUE CURVES
SHRUBS	BOTANICAL NAME	COMMON NAME	REMARKS
CLD7	CLUSIA GUTTIFERA	SMALL-LEAF CLUSIA	FULL & THICK
GROUND COVERS	BOTANICAL NAME	COMMON NAME	REMARKS
CG	CHRYSOBALANUS ICACO 'GREEN TIP'	COCOPALM	FULL & THICK
FG	FICUS MACROPHYLLA 'GREEN ISLAND'	GREEN ISLAND FICUS	FULL & THICK
TF	TRIPSACUM FLORIDANA	DWARF FAKAHATCHEE GRASS	FULL & THICK

25' LANDSCAPE BUFFER TYPICAL



Cotleur & Hearing
 Land Planners
 Environmental Consultants
 1934 Commerce Lane
 Suite 1
 Jupiter, Florida 33458
 561.747.6336 • Fax 747.1377
 www.cotleurhearing.com
 Lic# LC-C000239

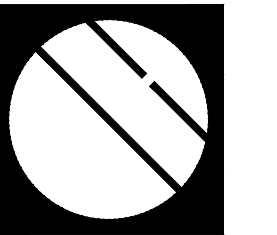
SYMPHONY LAKES
 Ft. Pierce, Florida

PLANNED DEVELOPMENT
 FINAL LANDSCAPE PLAN

DESIGNED: PRP
 DRAWN: PRP
 APPROVED: LAH
 JOB NUMBER: 21-1214
 DATE: 09-19-25
 REVISIONS:

Scale: 1" = 200'-0"

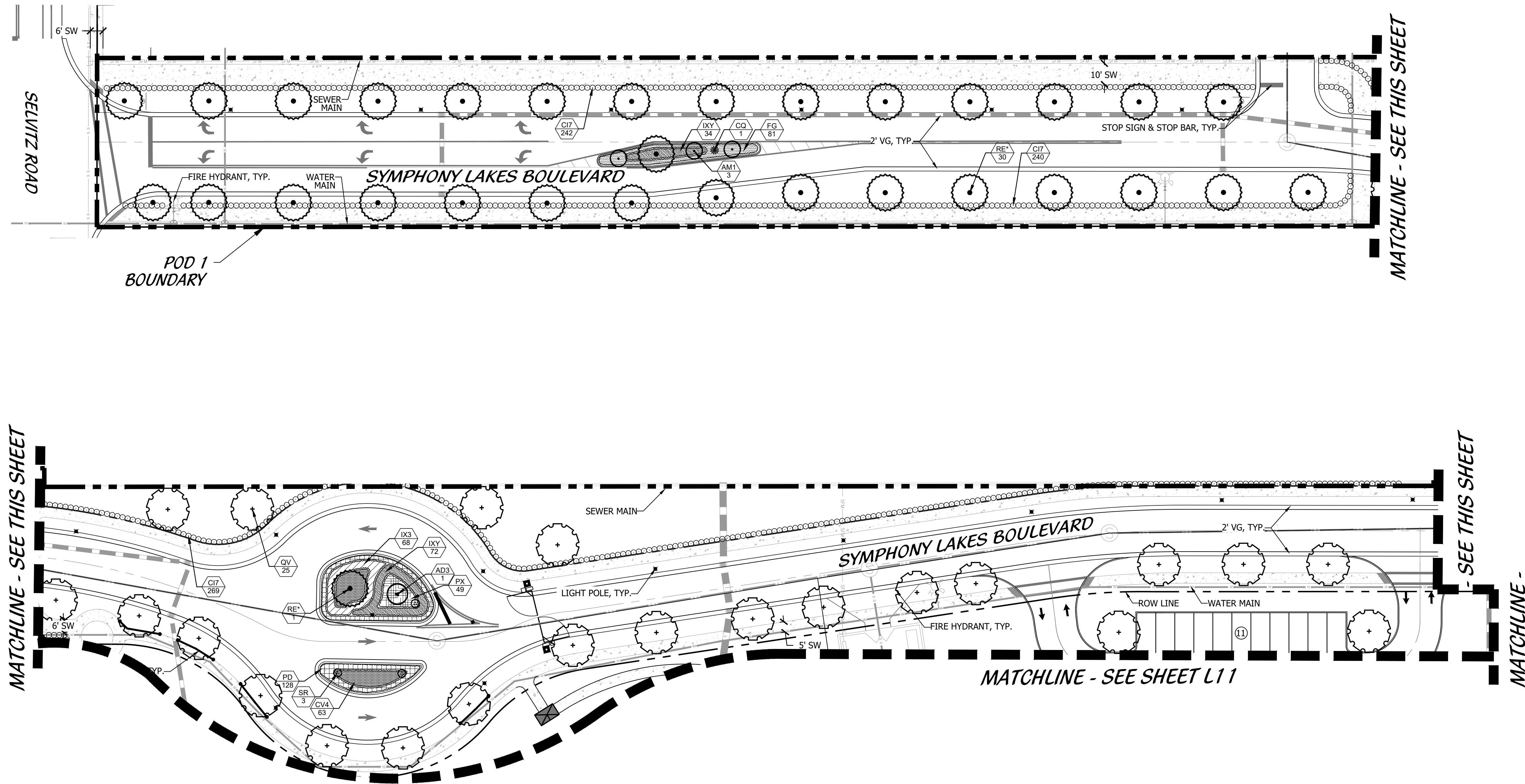
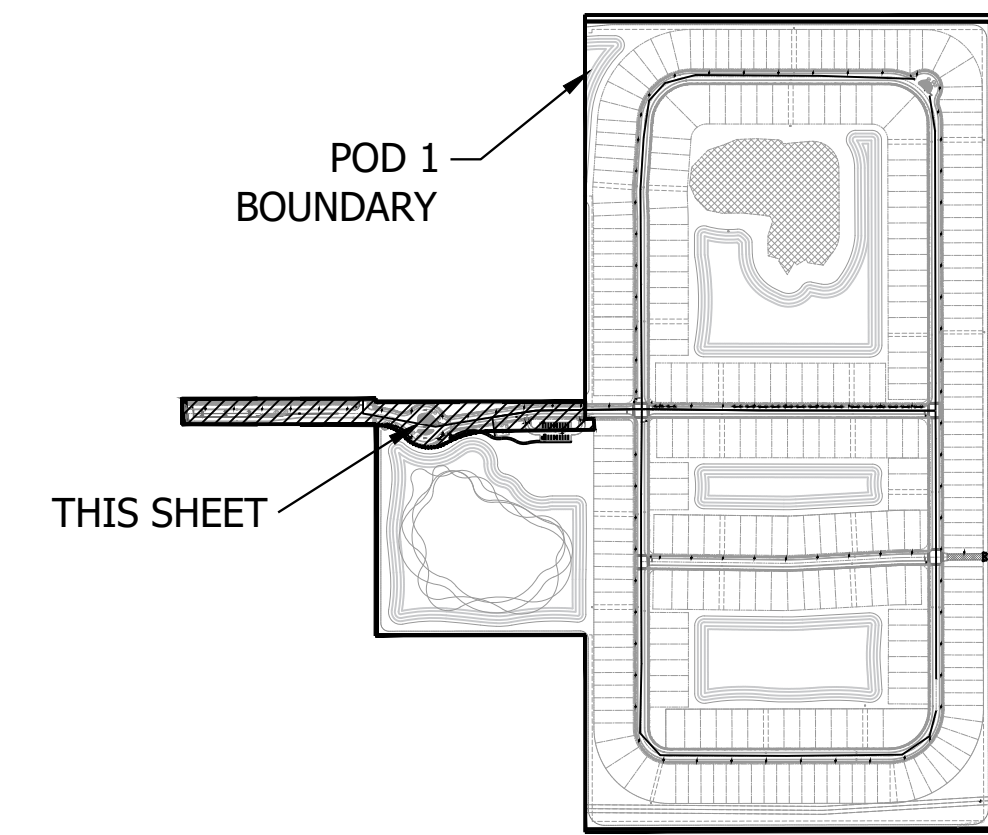
North



Cotleur & Hearing

Landscape Architects
Land Planners
Environmental Consultants
1934 Commerce Lane
Suite 1
Jupiter, Florida 33458
561.747.6336 · Fax 747.1377
www.cotleurhearing.com
Lic# LC-C000239

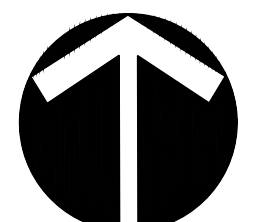
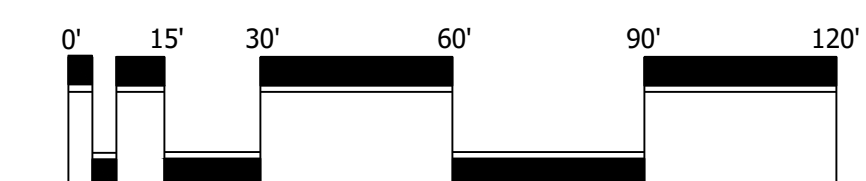
KEY MAP



LEGEND

- | | | | |
|-----|-------------------|--|---------------------|
| LB | LANDSCAPE BUFFER | | STOP SIGN |
| LS | LANDSCAPE | | DO NOT ENTER |
| SB | SETBACK | | PEDESTRIAN CROSSING |
| SW | SIDEWALK | | STREET LIGHT |
| TYP | TYPICAL | | PRESERVE |
| DE | DRAINAGE EASEMENT | | |

PLANNED DEVELOPMENT FINAL LANDSCAPE PLAN



Scale: 1" = 30'-0"

North

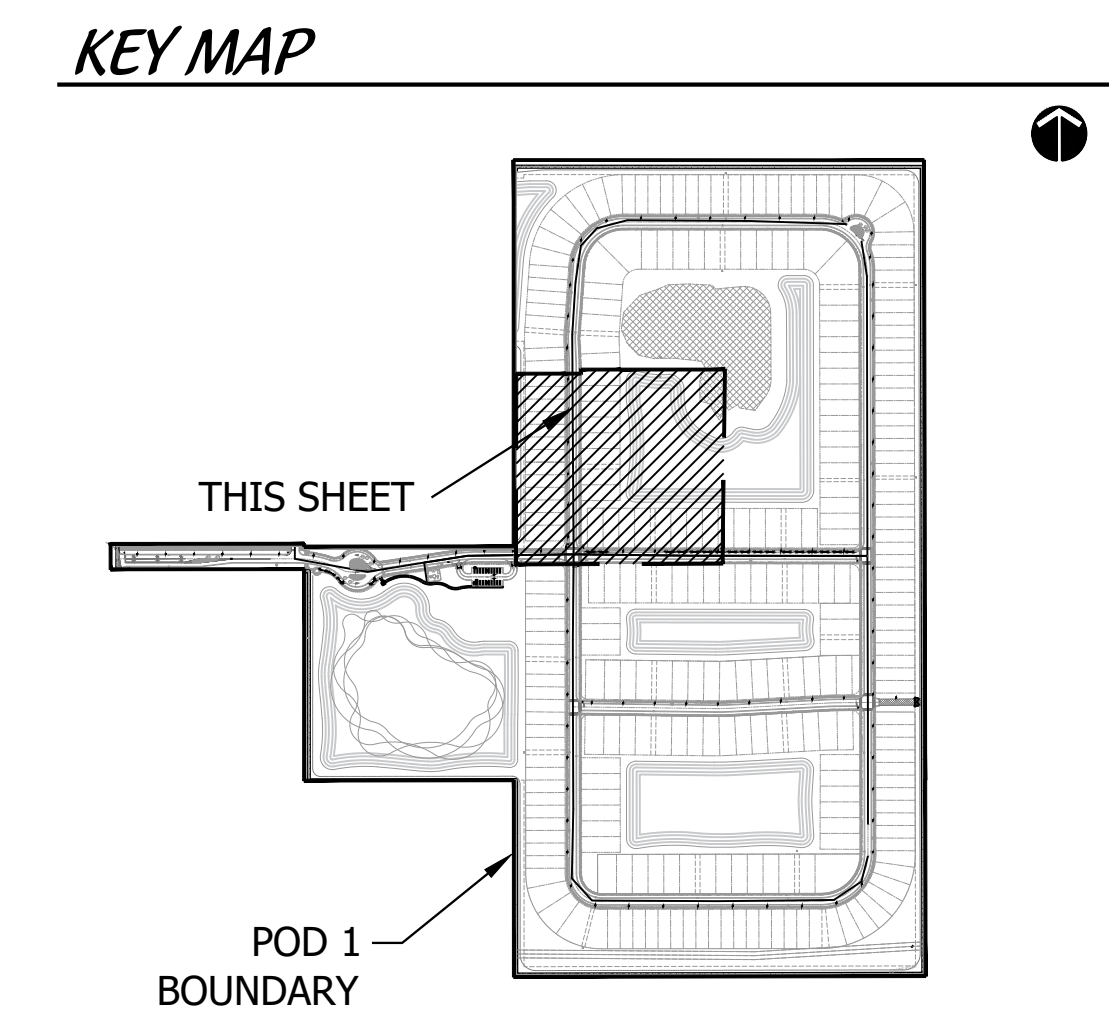
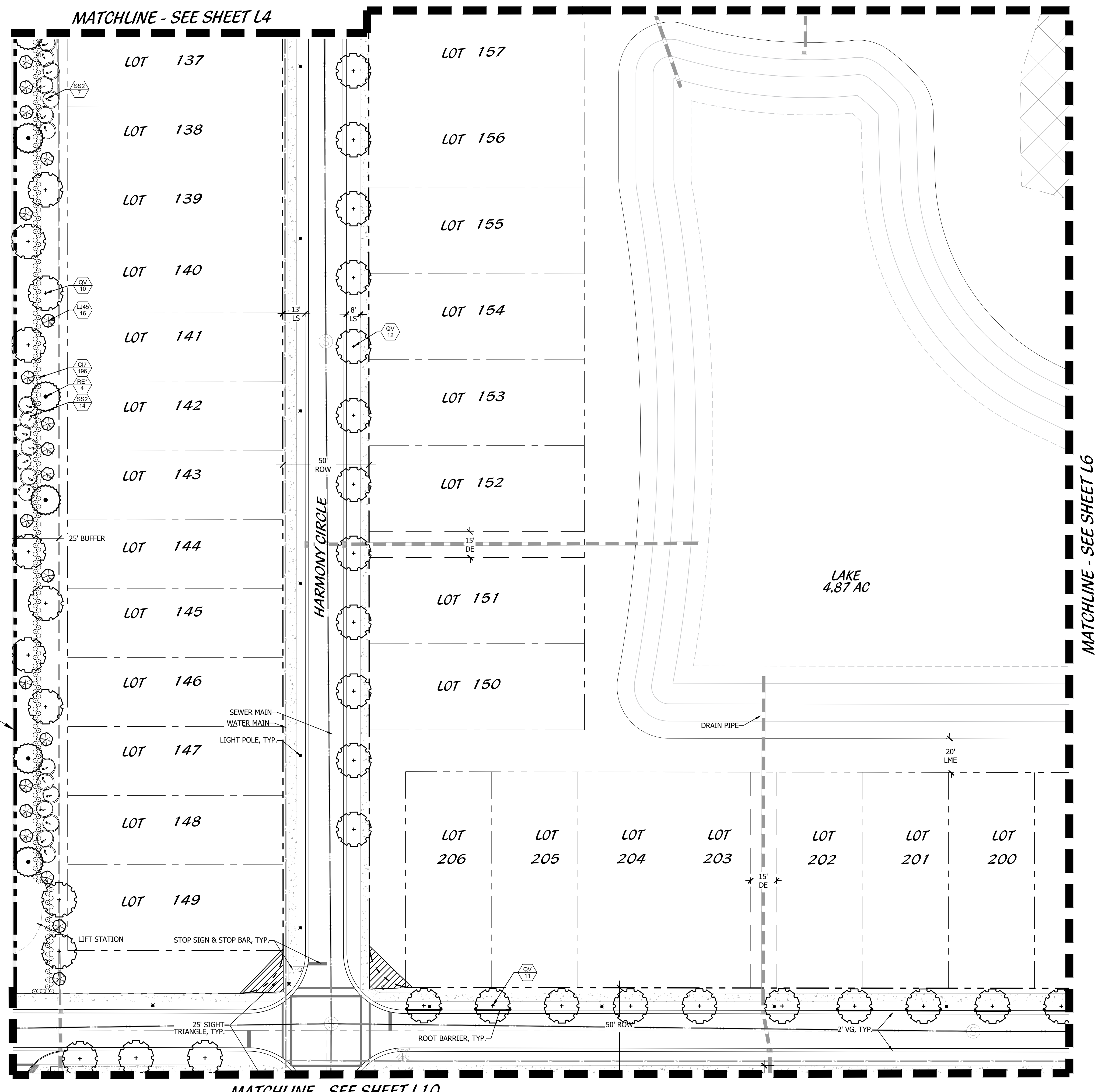
SYMPHONY LAKES

Ft. Pierce, Florida

DESIGNED	PRP
DRAWN	PRP
APPROVED	LAH
JOB NUMBER	21-1214
DATE	09-19-25
REVISIONS	

SHEET LP2 OF 12

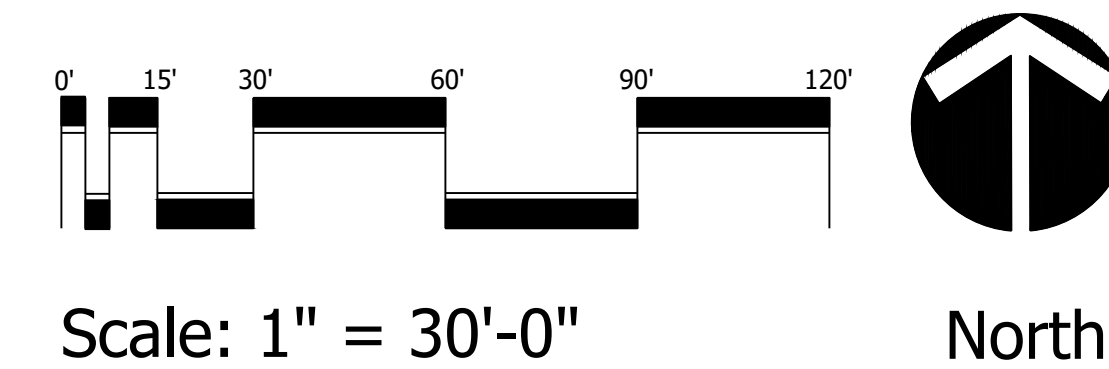
© COTLEUR & HEARING, INC.
These drawings are the property of the architect and are not to be used for other projects or on other projects except by agreement in writing with the architect. Immediately report any discrepancies to the architect.



LEGEND

LB	LANDSCAPE BUFFER	+	STOP SIGN
LS	LANDSCAPE SETBACK	⊘	DO NOT ENTER
SB	SETBACK	⊘	PEDESTRIAN CROSSING
SW	SIDEWALK	⊘	STREET LIGHT
TYP	TYPICAL	⊘	PRESERVE
DE	DRAINAGE EASEMENT		

**PLANNED DEVELOPMENT
FINAL LANDSCAPE PLAN**



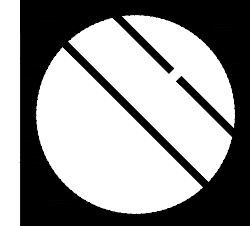
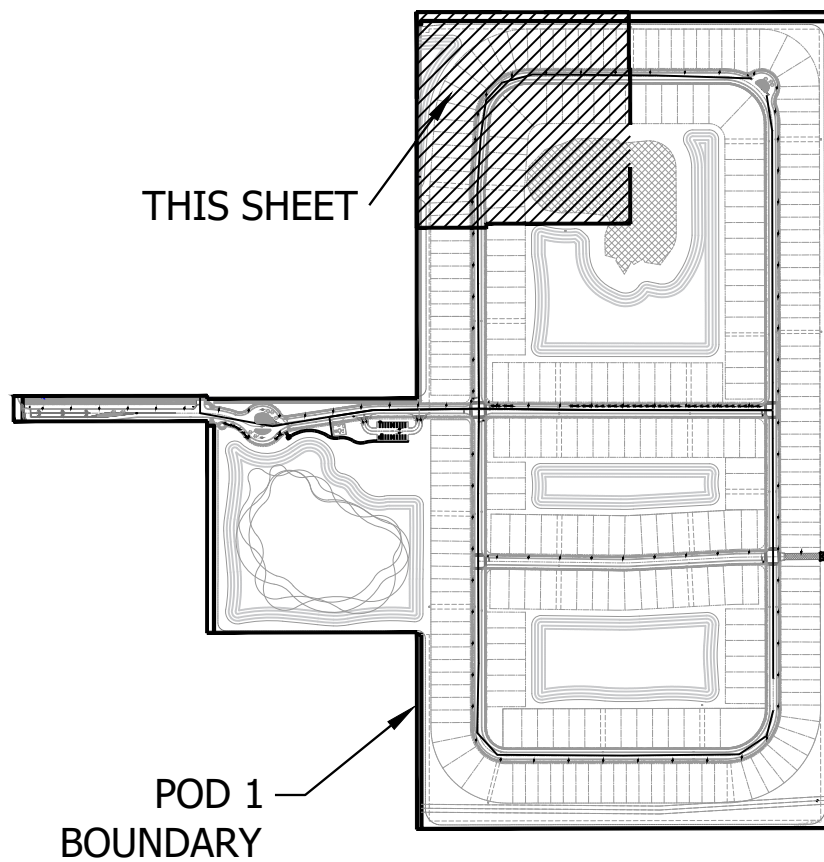
Cotleur & Hearing
 Landscape Architects
 Land Planners
 Environmental Consultants
 1934 Commerce Lane
 Suite 1
 Jupiter, Florida 33458
 561.747.6336 · Fax 747.1377
 www.cotleurhearing.com
 Lic# LC-C000239

SYMPHONY LAKES
 Ft. Pierce, Florida

DESIGNED	PRP
DRAWN	PRP
APPROVED	LAH
JOB NUMBER	21-1214
DATE	09-19-25
REVISIONS	

CANAL NO. 101

KEY MAP



Cotleur & Hearing

Landscape Architects
Land Planners
Environmental Consultants

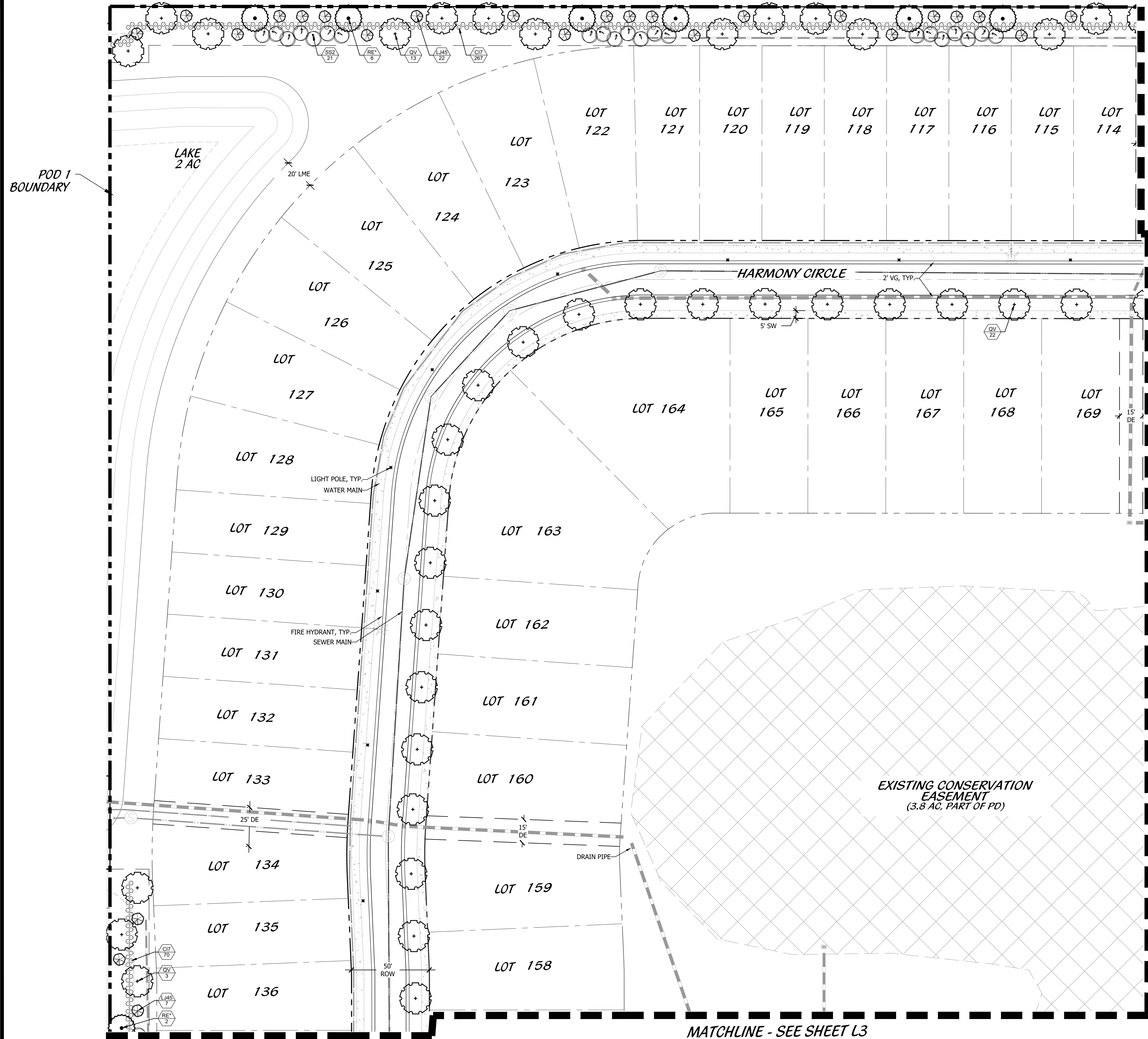
1934 Commerce Lane
Suite 1
Jupiter, Florida 33458
561.747.6336 · Fax 747.1377
www.cotleurhearing.com
Lic# LC-C000239

SYMPHONY LAKES

Ft. Pierce, Florida

POD 1
BOUNDARY

LAKE
2 AC



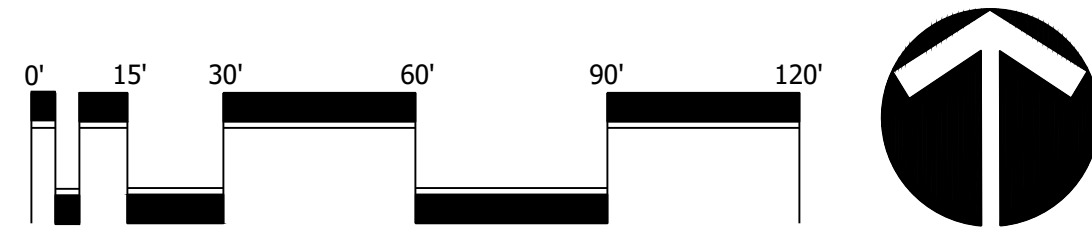
MATCHLINE - SEE SHEET L5

EXISTING CONSERVATION
EASEMENT
(3.8 AC, PART OF PD)

LEGEND

- | | | |
|-----|-------------------|---------------------|
| LB | LANDSCAPE BUFFER | STOP SIGN |
| LS | LANDSCAPE SETBACK | DO NOT ENTER |
| SB | SETBACK | PEDESTRIAN CROSSING |
| SW | SIDEWALK | STREET LIGHT |
| TYP | TYPICAL | PRESERVE |
| DE | DRAINAGE EASEMENT | |

PLANNED DEVELOPMENT FINAL LANDSCAPE PLAN



Scale: 1" = 30'-0"

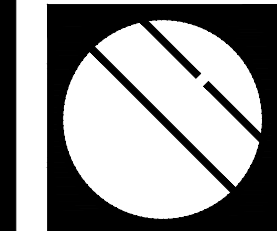
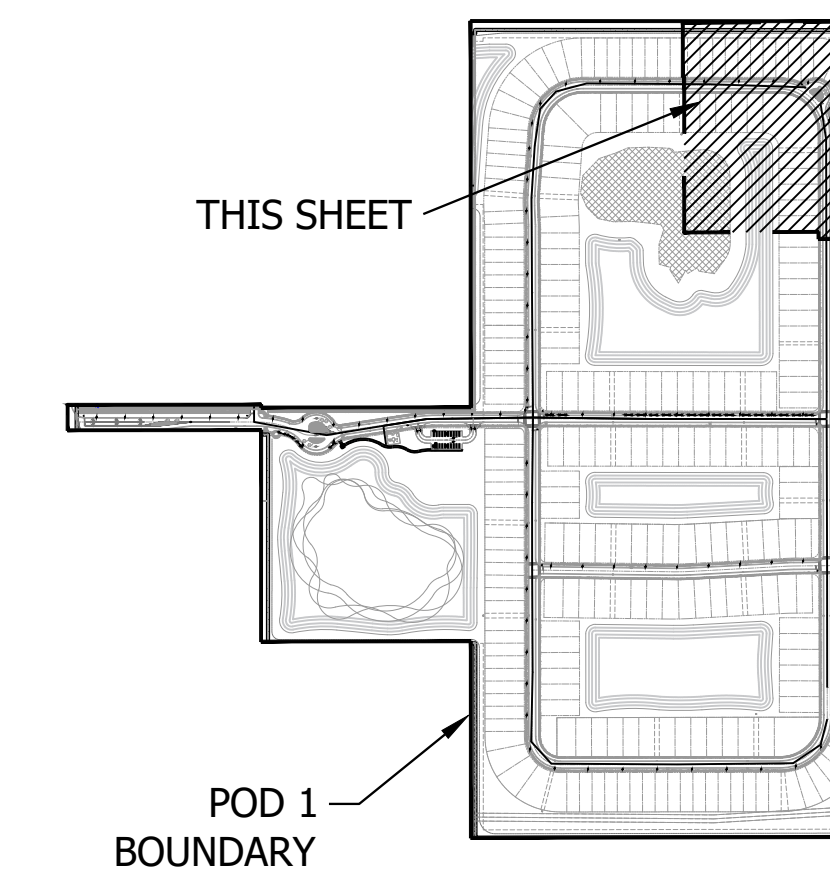
North

DESIGNED	PRP
DRAWN	PRP
APPROVED	LAH
JOB NUMBER	21-1214
DATE	09-19-25
REVISIONS	

SHEET LP4 OF 12
© COTLEUR & HEARING, INC.
These drawings are the property of the architect and are not to be used for other projects or on other projects except by agreement in writing with the architect. Immediately report any discrepancies to the architect.

CANAL NO. 101

KEY MAP



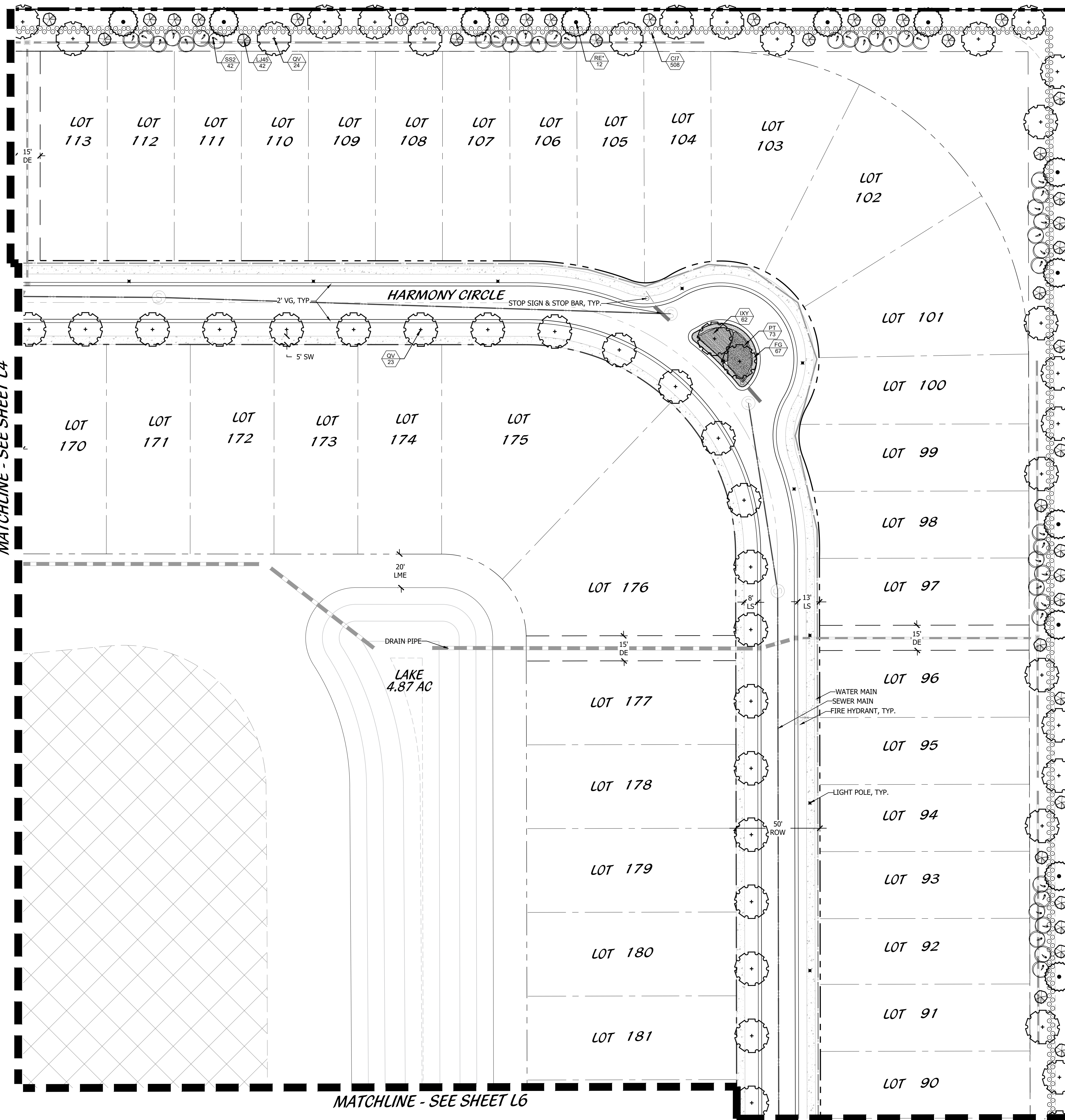
Cotleur & Hearing

Landscape Architects
Land Planners
Environmental Consultants
1934 Commerce Lane
Suite 1
Jupiter, Florida 33458
561.747.6336 · Fax 747.1377
www.cotleurhearing.com
Lic# LC-C000239

SYMPHONY LAKES

Ft. Pierce, Florida

MATCHLINE - SEE SHEET L4

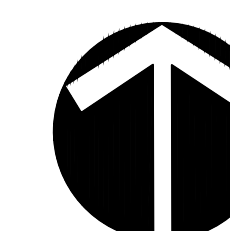
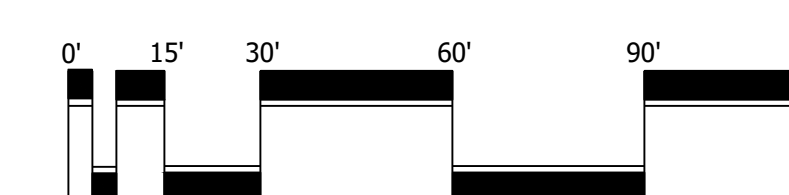


MATCHLINE - SEE SHEET L6

LEGEND

- | | | | |
|-----|-------------------|--|---------------------|
| LB | LANDSCAPE BUFFER | | STOP SIGN |
| LS | LANDSCAPE SETBACK | | DO NOT ENTER |
| SB | SETBACK | | PEDESTRIAN CROSSING |
| SW | SIDEWALK | | STREET LIGHT |
| TYP | TYPICAL | | PRESERVE |
| DE | DRAINAGE EASEMENT | | |

**PLANNED DEVELOPMENT
FINAL LANDSCAPE PLAN**



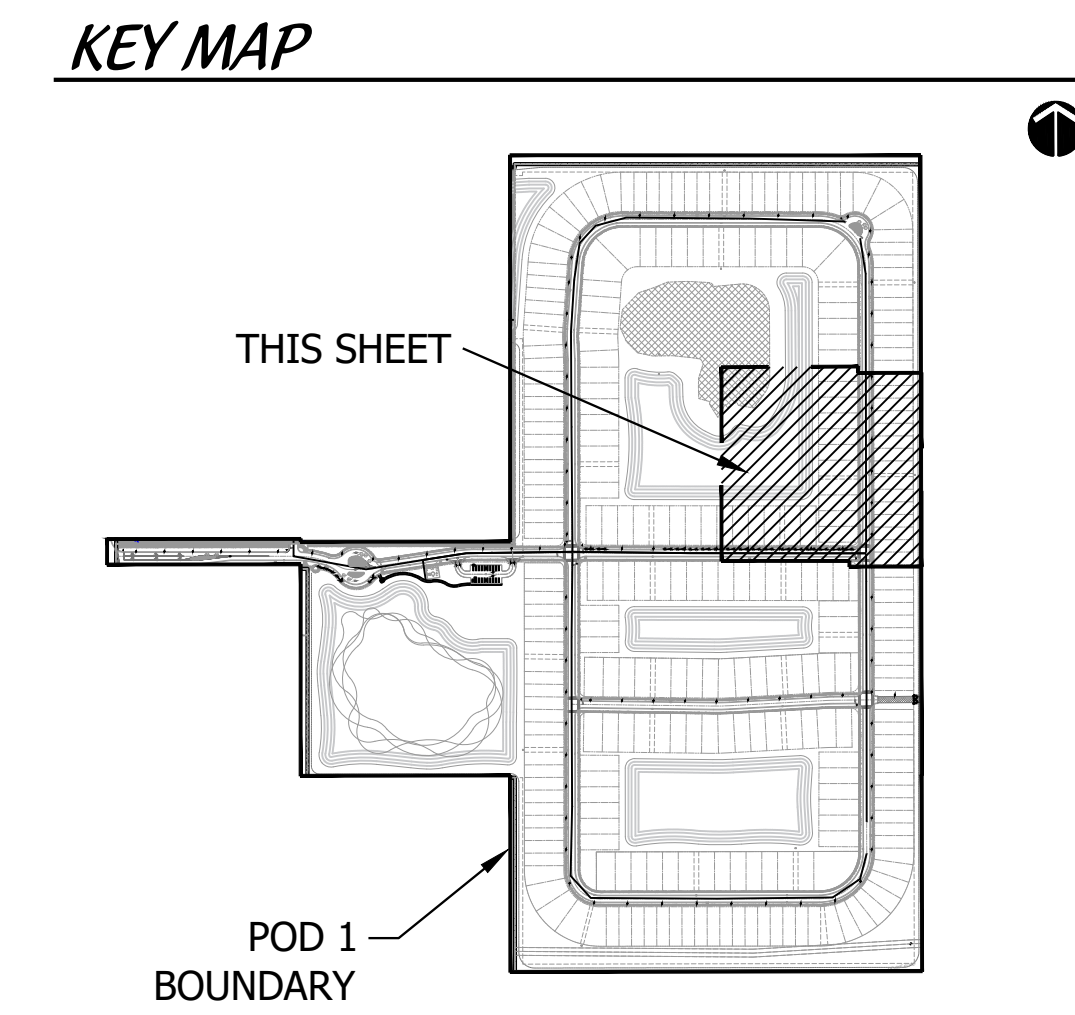
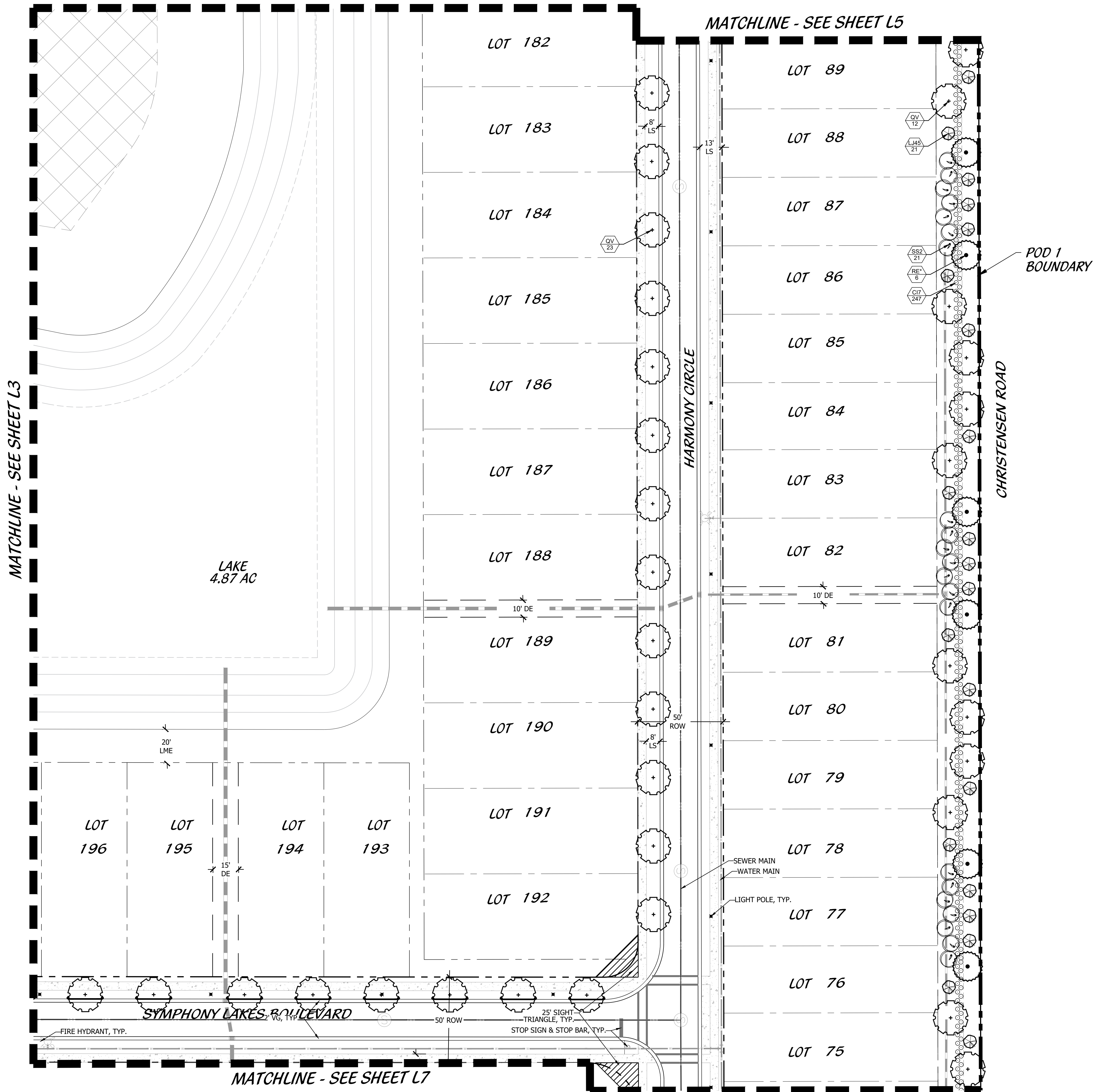
Scale: 1" = 30'-0"

North

DESIGNED _____ PRP
DRAWN _____ PRP
APPROVED _____ LAH
JOB NUMBER 21-1214
DATE 09-19-25
REVISIONS _____

SHEET LP5 OF 12

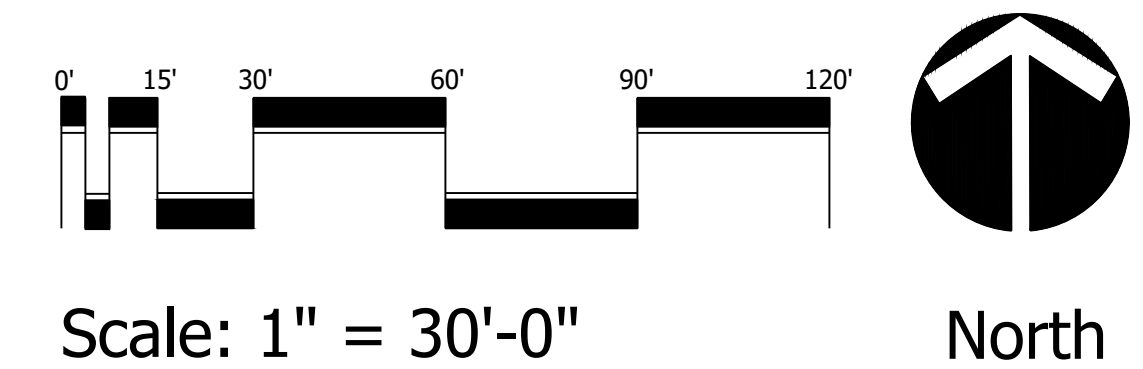
© COTLEUR & HEARING, INC.
These drawings are the property of the architect and are not to be used for other projects without the written consent of the architect. Immediately report any discrepancies to the architect.



LEGEND

LB	LANDSCAPE BUFFER		STOP SIGN
LS	LANDSCAPE SETBACK		DO NOT ENTER
SB	SETBACK		PEDESTRIAN CROSSING
SW	SIDEWALK		STREET LIGHT
TYP	TYPICAL		PRESERVE
DE	DRAINAGE EASEMENT		

**PLANNED DEVELOPMENT
FINAL LANDSCAPE PLAN**

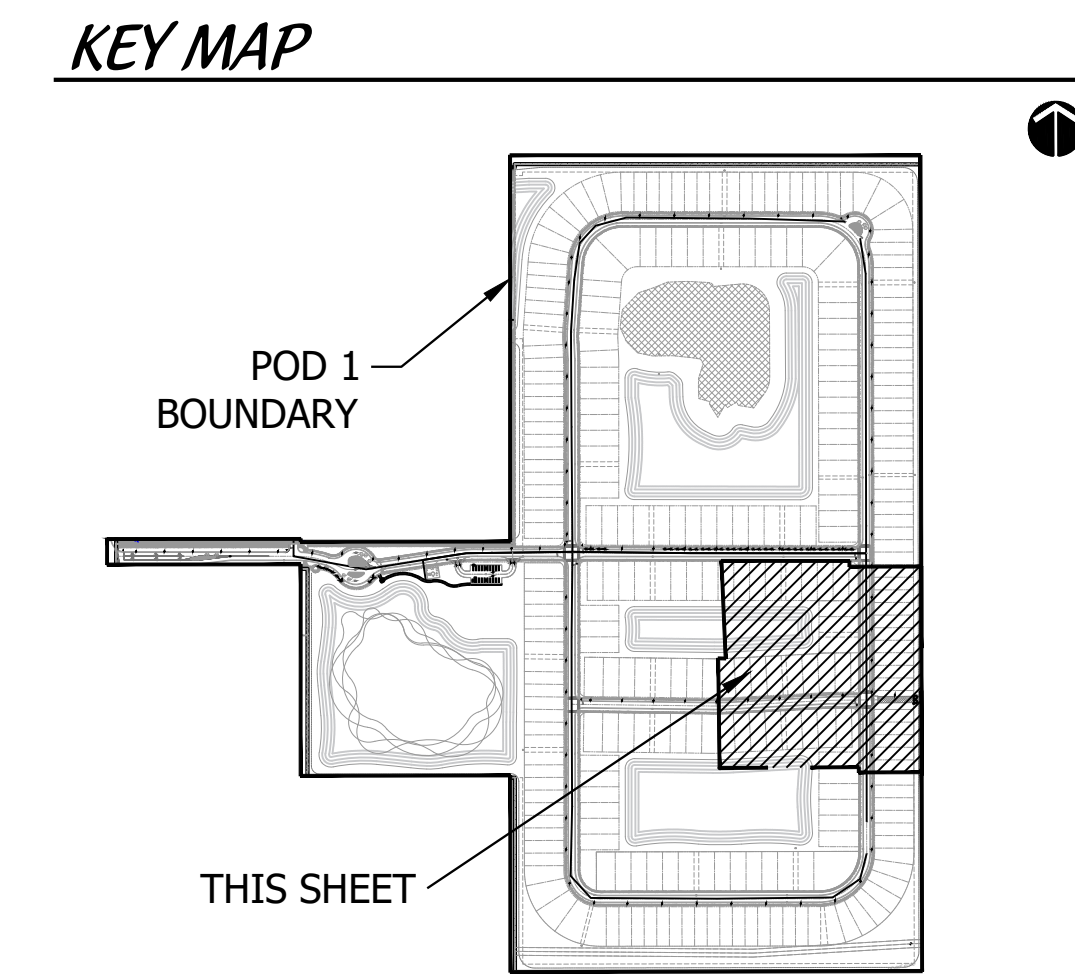
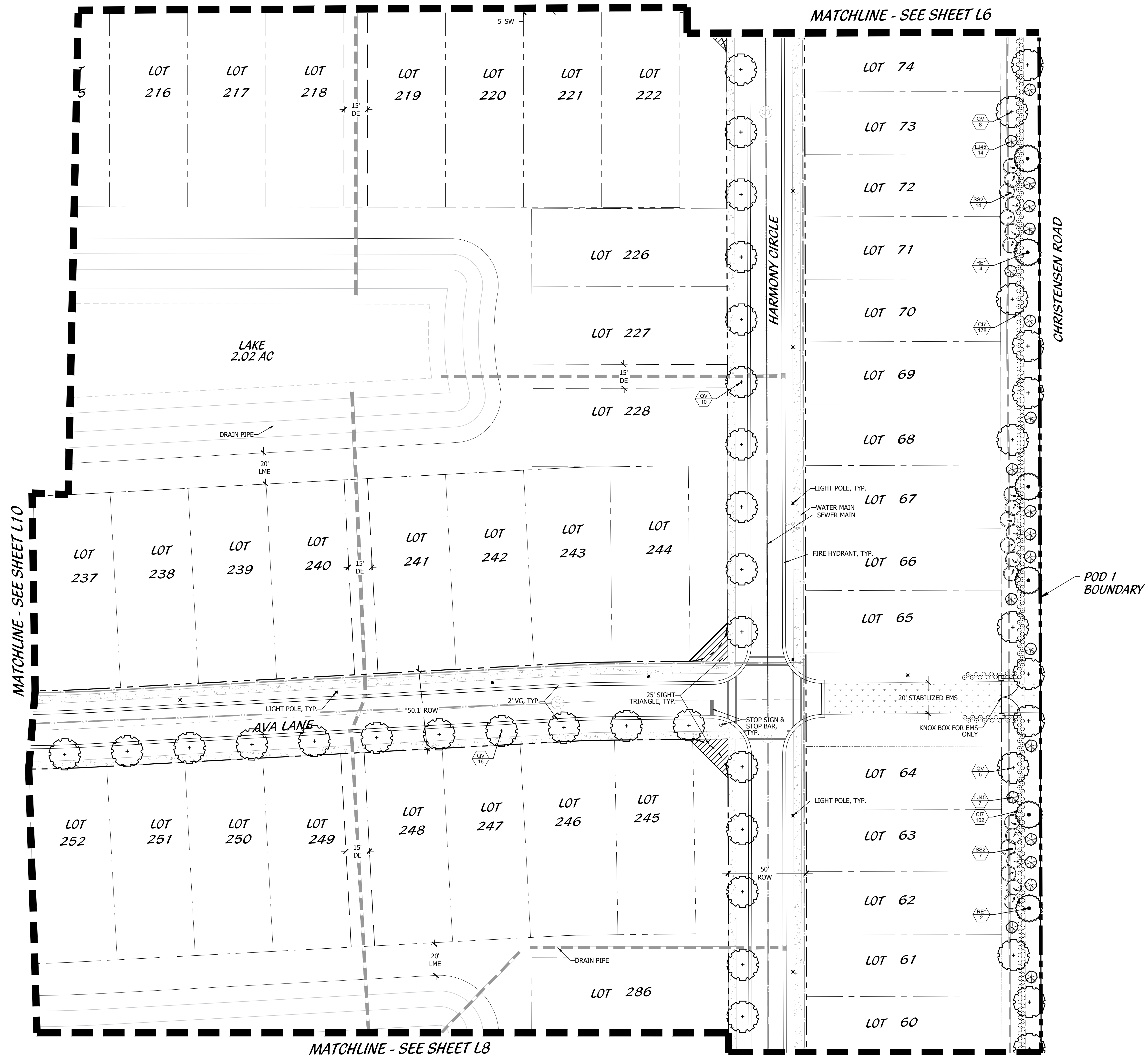


Scale: 1" = 30'-0"

Cotleur & Hearing
 Landscape Architects
 Land Planners
 Environmental Consultants
 1934 Commerce Lane
 Suite 1
 Jupiter, Florida 33458
 561.747.6336 · Fax 747.1377
 www.cotleurhearing.com
 Lic# LC-C000239

SYMPHONY LAKES
 Ft. Pierce, Florida

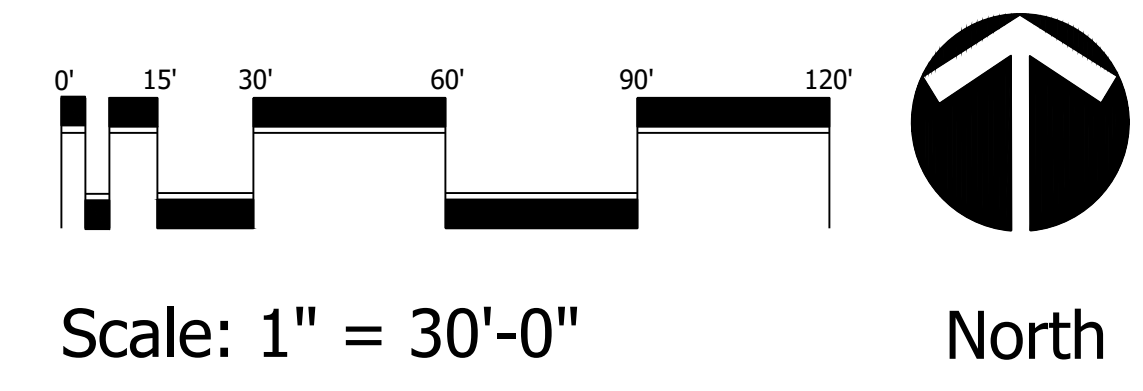
DESIGNED	PRP
DRAWN	PRP
APPROVED	LAH
JOB NUMBER	21-1214
DATE	09-19-25
REVISIONS	



LEGEND

LB	LANDSCAPE BUFFER	STOP SIGN
LS	LANDSCAPE SETBACK	DO NOT ENTER
SB	SIDEWALK	PEDESTRIAN CROSSING
SW	TYPICAL	STREET LIGHT
TYP	DRAINAGE EASEMENT	PRESERVE
DE		

**PLANNED DEVELOPMENT
FINAL LANDSCAPE PLAN**



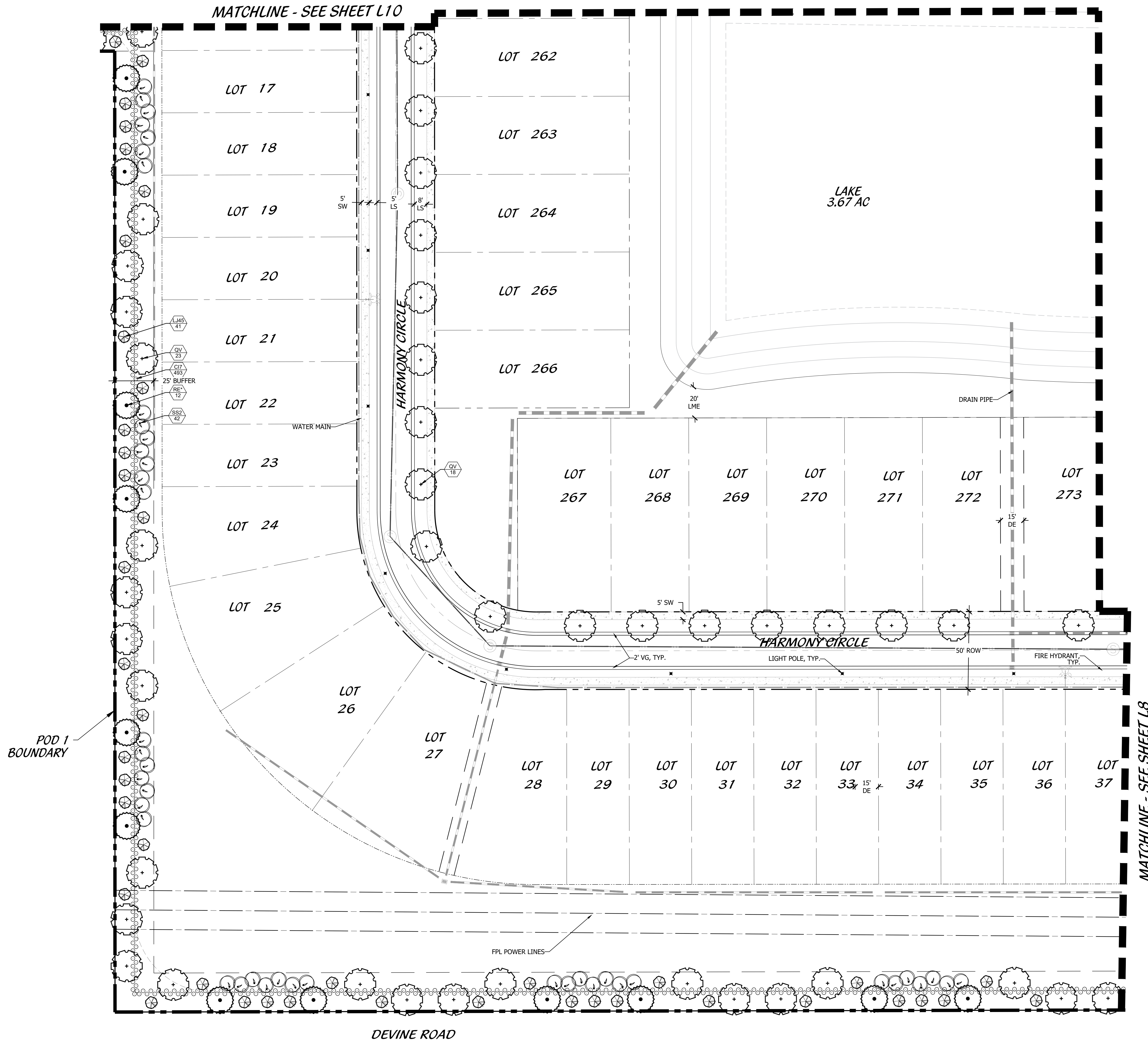
Cotleur & Hearing
Landscape Architects
Land Planners
Environmental Consultants

1934 Commerce Lane
Suite 1
Jupiter, Florida 33458
561.747.6336 · Fax 747.1377
www.cotleurhearing.com
Lic# LC-C000239

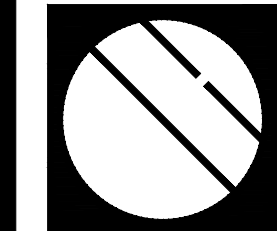
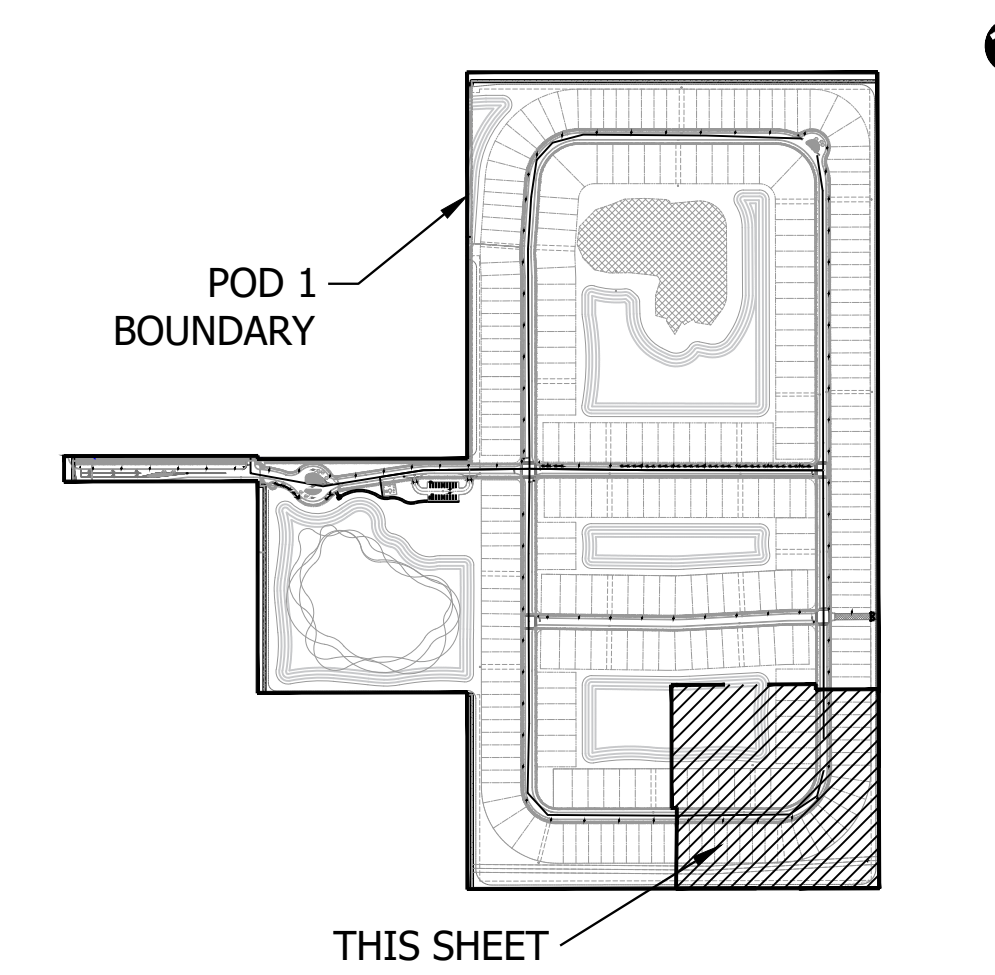
SYMPHONY LAKES
Ft. Pierce, Florida

DESIGNED	PRP
DRAWN	PRP
APPROVED	LAH
JOB NUMBER	21-1214
DATE	09-19-25
REVISIONS	

MATCHLINE - SEE SHEET L10



KEY MAP



Cotleur & Hearing
 Landscape Architects
 Land Planners
 Environmental Consultants
 1934 Commerce Lane
 Suite 1
 Jupiter, Florida 33458
 561.747.6336 · Fax 747.1377
 www.cotleurhearing.com
 Lic# LC-C000239

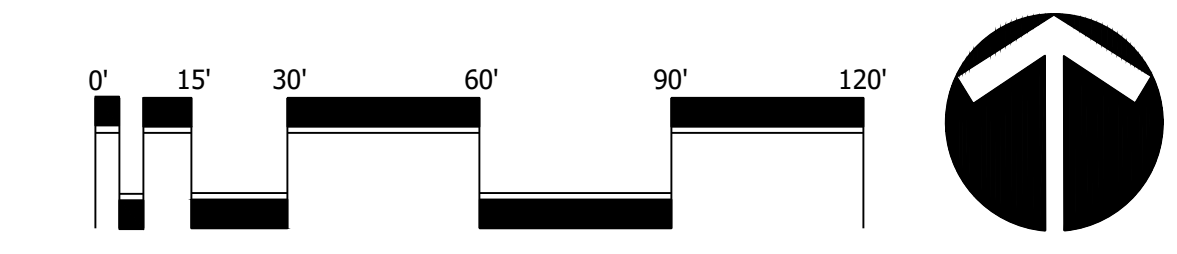
SYMPHONY LAKES

Ft. Pierce, Florida

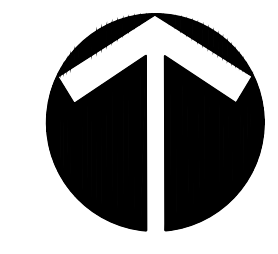
LEGEND

- | | | | |
|-----|-------------------|--|---------------------|
| LB | LANDSCAPE BUFFER | | STOP SIGN |
| LS | LANDSCAPE SETBACK | | DO NOT ENTER |
| SB | SETBACK | | PEDESTRIAN CROSSING |
| SW | SIDEWALK | | STREET LIGHT |
| TYP | TYPICAL | | PRESERVE |
| DE | DRAINAGE EASEMENT | | |

PLANNED DEVELOPMENT FINAL LANDSCAPE PLAN



Scale: 1" = 30'-0"



North

DESIGNED	PRP
DRAWN	PRP
APPROVED	LAH
JOB NUMBER	21-1214
DATE	09-19-25
REVISIONS	

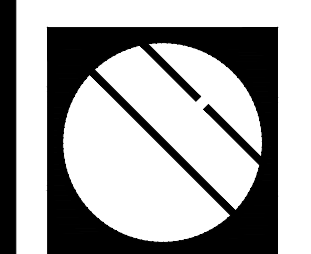
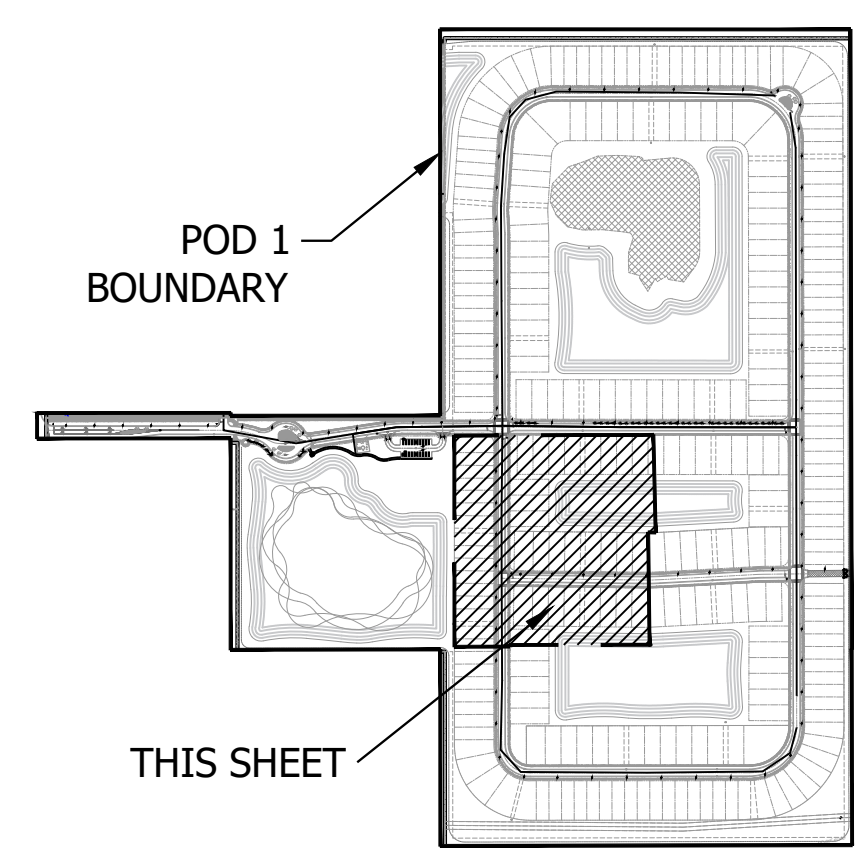
MATCHLINE - SEE SHEET L3

MATCHLINE - SEE SHEET L11

MATCHLINE - SEE SHEET L10

MATCHLINE - SEE SHEET L9

KEY MAP



Cotleur & Hearing

Landscape Architects
Land Planners
Environmental Consultants
1934 Commerce Lane
Suite 1
Jupiter, Florida 33458
561.747.6336 · Fax 747.1377
www.cotleurhearing.com
Lic# LC-C000239

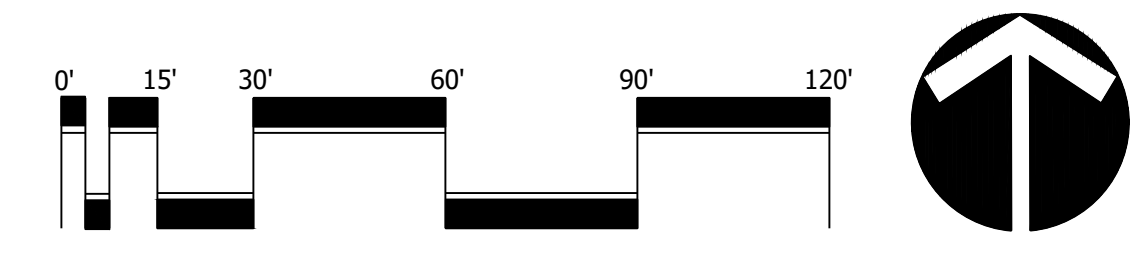
SYMPHONY LAKES

Ft. Pierce, Florida

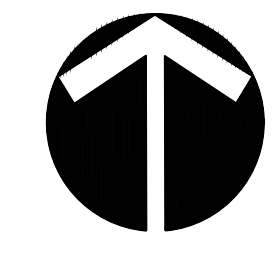
LEGEND

- | | | | |
|-----|-------------------|--|---------------------|
| LB | LANDSCAPE BUFFER | | STOP SIGN |
| LS | LANDSCAPE SETBACK | | DO NOT ENTER |
| SB | SETBACK | | PEDESTRIAN CROSSING |
| SW | SIDEWALK | | STREET LIGHT |
| TYP | TYPICAL | | PRESERVE |
| DE | DRAINAGE EASEMENT | | |

PLANNED DEVELOPMENT FINAL LANDSCAPE PLAN

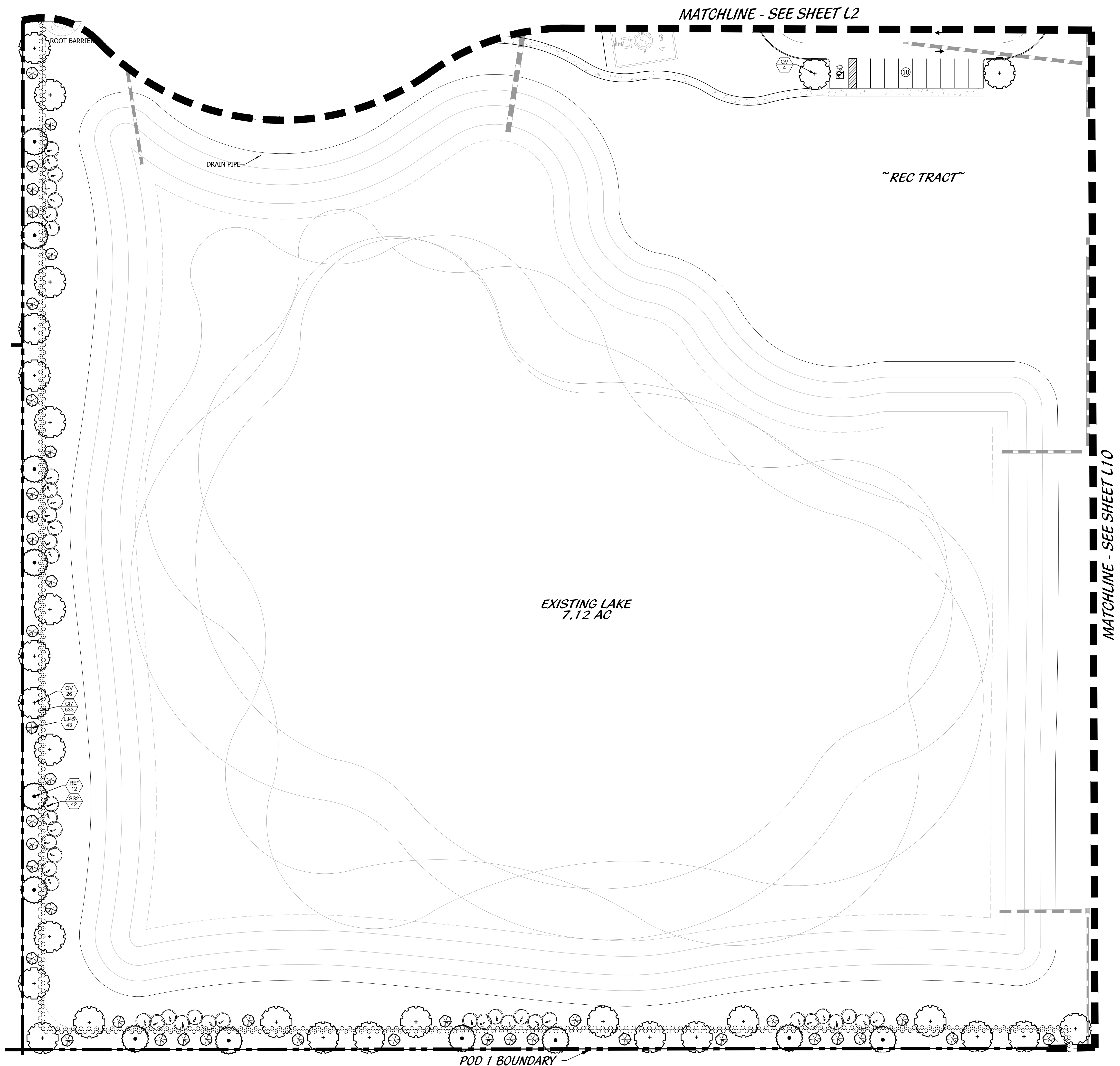


Scale: 1" = 30'-0"

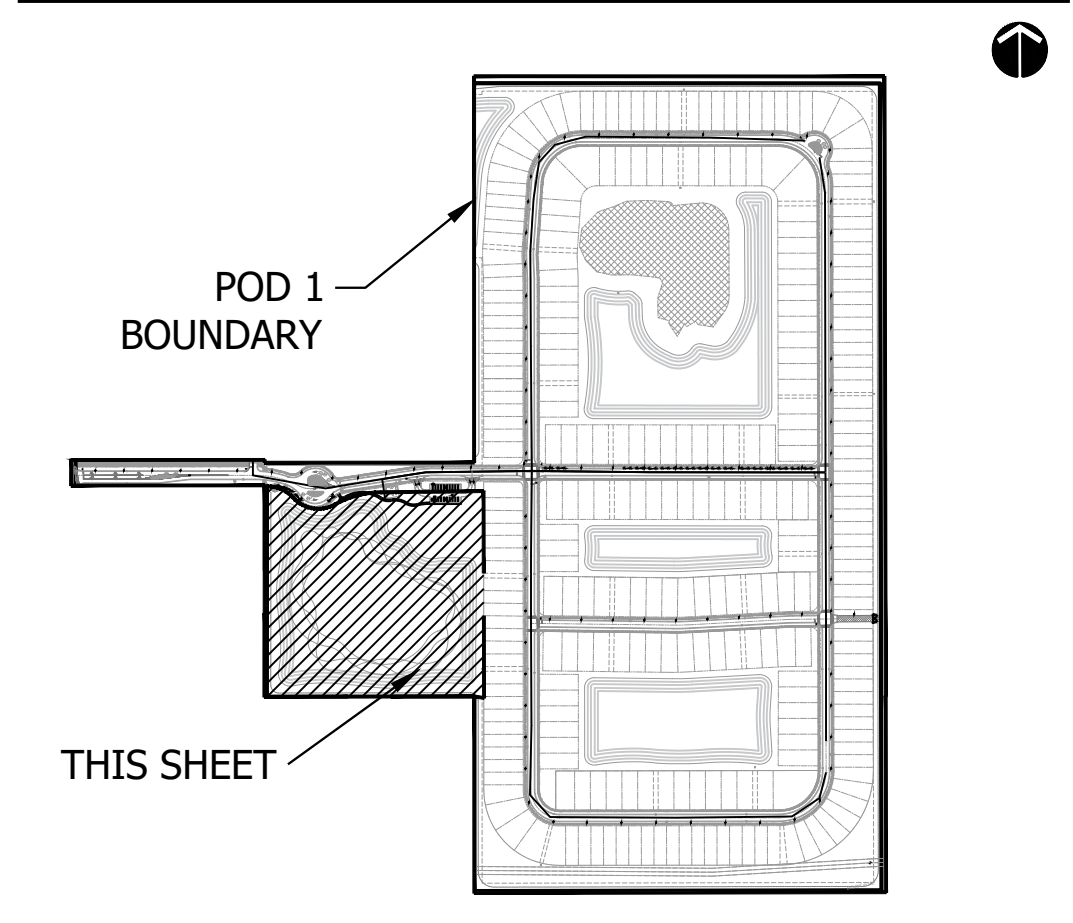


North

DESIGNED	PRP
DRAWN	PRP
APPROVED	LAH
JOB NUMBER	21-1214
DATE	09-19-25
REVISIONS	



KEY MAP

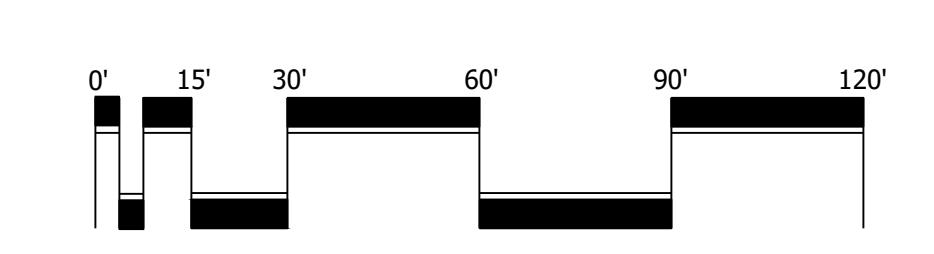


LEGEND

LB	LANDSCAPE BUFFER	STOP SIGN
LS	LANDSCAPE	DO NOT ENTER
SB	SETBACK	PEDESTRIAN CROSSING
SW	SIDEWALK	STREET LIGHT
TYP	TYPICAL	PRESERVE
DE	DRAINAGE EASEMENT	

*NOTE:
SEPARATE SITE PLAN APPLICATION WILL BE
SUBMITTED FOR AMENITY REC TRACT 1

**PLANNED DEVELOPMENT
LANDSCAPE PLAN**



Scale: 1" = 30'-0"



Cotleur & Hearing
Landscape Architects
Land Planners
Environmental Consultants
1934 Commerce Lane
Suite 1
Jupiter, Florida 33458
561.747.6336 · Fax 747.1377
www.cotleurhearing.com
Lic# LC-C000239

SYMPHONY LAKES

Ft. Pierce, Florida

DESIGNED	PRP
DRAWN	PRP
APPROVED	LAH
JOB NUMBER	21-1214
DATE	09-19-25
REVISIONS	

LANDSCAPE SPECIFICATIONS

1. GENERAL LANDSCAPE REQUIREMENTS

LANDSCAPE CONTRACT WORK INCLUDES, BUT IS NOT LIMITED TO, SOIL PREPARATION, FINE OR FINISH GRADING, FURNISHING AND INSTALLING PLANT MATERIAL, WATERING, STAKING, GUYING AND MULCHING.

PLANT SIZE AND QUALITY

TREES, PALMS, SHRUBS, GROUNDCOVERS: PLANT SPECIES AND SIZES SHALL CONFORM TO THOSE INDICATED ON THE DRAWINGS, NOMENCLATURE SHALL CONFORM TO STANDARD PLANT NAMES, 1992 EDITION. ALL NURSERY STOCK SHALL BE IN ACCORDANCE WITH GRADES AND STANDARDS FOR NURSERY PLANTS PARTS 1 & 1b, LATEST EDITION PUBLISHED BY THE FLORIDA DEPARTMENT OF AGRICULTURE AND CONSUMER SERVICES, UNLESS SPECIFIED OTHERWISE. ALL PLANTS SHALL BE FLORIDA GRADE NUMBER 1 OR BETTER AS DETERMINED BY THE FLORIDA DIVISION OF PLANT INDUSTRY.

ALL CONTAINER GROWN MATERIAL SHALL BE HEALTHY, VIGOROUS, WELL-ROOTED PLANTS AND ESTABLISHED IN THE CONTAINER IN WHICH THEY ARE SOLD. THE PLANTS SHALL HAVE TOPS OF GOOD QUALITY AND BE IN A HEALTHY GROWING CONDITION.

AN ESTABLISHED CONTAINER GROWN PLANT SHALL BE TRANSPORTED INTO A CONTAINER AND GROWN IN THAT CONTAINER SUFFICIENTLY LONG ENOUGH FOR THE NEW FIBROUS ROOTS TO HAVE DEVELOPED SO THAT THE ROOT MASS WILL RETAIN ITS SHAPE AND HOLD TOGETHER WHEN REMOVED FROM THE CONTAINER.

STANDARD PLANTING MIXTURE SHALL BE ONE (1) PART RECYCLED ORGANIC MATERIAL ADDED TO THREE (3) PARTS EXISTING NATIVE SOIL.

REPLACEMENT SOIL SHALL BE USED AS SPECIFIED TO REPLACE EXISTING SOILS THAT ARE DETERMINED BY THE LANDSCAPE ARCHITECT TO BE UNSUITABLE FOR PLANTING. IE, ROAD BASE, PAVEMENT, ETC. REPLACEMENT SOIL MIX SHALL CONTAIN 60% SAND AND 40% MUCK. SAND SHALL BE 100% CLEAN NATIVE SAND SCREENED TO 1/4" AND MUCK SHALL BE 100% CLEAN ORGANIC NATIVE MUCK, SCREENED TO 1/2". ALL SOIL SHALL BE MIXED PRIOR TO DELIVERY ON SITE.

MULCH SHALL BE SHREDED MELALEUCA, EUCALYPTUS OR GRADE "A" RECYCLED. ALL MULCH IS TO BE APPLIED TO A DEPTH OF 3", EXCEPT AS OTHERWISE NOTED.

FERTILIZER IN BACKFILL MIXTURE FOR ALL PLANTS SHALL CONSIST OF MILORGANITE ACTIVATED SLUDGE MIXED WITH THE BACKFILL AT A RATE OF NOT LESS THAN 50 LBS. PER CUBIC YARD.

FERTILIZER FOR TREES AND SHRUBS MAY BE TABLET FORM OR GRANULAR. GRANULAR FERTILIZER SHALL BE UNIFORM IN COMPOSITION, DRY AND FREE-FLOWING. THIS FERTILIZER SHALL BE DELIVERED TO THE SITE IN THE ORIGINAL UNOPENED BAGS, EACH BEARING THE MANUFACTURER'S STATEMENT OF ANALYSIS, AND SHALL MEET THE FOLLOWING REQUIREMENTS: 16% NITROGEN, 7% PHOSPHORUS, 12% POTASSIUM, PLUS IRON. TABLET FERTILIZER (AGRFORM OR EQUAL) IN 21 GRAM SIZE SHALL MEET THE FOLLOWING REQUIREMENTS: 20% NITROGEN, 10% PHOSPHORUS AND 5% POTASSIUM.

FERTILIZER WILL BE APPLIED AT THE FOLLOWING RATES:

PLANT SIZE	16-7-12	AGRFORM TABLETS (21 GRAM)
1 GAL.	1/4 LB.	1
3 GAL.	3/8 LB.	3
7-15 GAL.	1/2 LB.	5
1'-6" CALIPER	2 LBS./1" CALIPER	2 PER 1" CALIPER
6" AND LARGER	3 LBS./1" CALIPER	2 PER 1" CALIPER

FLORIDA EAST COAST PALM SPECIAL SHALL BE APPLIED TO ALL PALMS AT INSTALLATION AT A RATE OF 1/2 LB. PER INCH OF TRUNK UNLESS OTHERWISE SPECIFIED.

FIELD GROWN TREES AND PALMS PREVIOUSLY ROOT PRUNED SHALL OBTAIN A ROOT BALL WITH SUFFICIENT ROOTS FOR CONTINUED GROWTH WITHOUT RESULTING SHOCK.

CONTRACTOR SHALL NOT MARK OR SCAR TRUNK IN ANY FASHION.

PLANTS SHALL BE WATERED AS NECESSARY OR WITHIN 24 HOURS AFTER NOTIFICATION BY THE LANDSCAPE ARCHITECT.

THE LOCATIONS OF PLANTS, AS SHOWN IN THESE PLANS, ARE APPROXIMATE. THE FINAL LOCATIONS MAY BE ADJUSTED TO ACCOMMODATE UNFORESEEN FIELD CONDITIONS. MAJOR ADJUSTMENTS TO THE LAYOUT ARE TO BE APPROVED BY THE LANDSCAPE ARCHITECT.

ALL PLASTIC FABRIC SHALL BE REMOVED FROM PLANT MATERIAL AT TIME OF INSTALLATION.

ALL TREES MUST BE STAKED AS SHOWN ON THE PLANTING DETAILS WITHIN 24 HOURS OF PLANTING. STAKES TO REMAIN FOR A MINIMUM OF 9 MONTHS, BUT NO LONGER THAN 18 MONTHS. CONTRACTOR IS RESPONSIBLE FOR MAINTENANCE AND REMOVAL OF THE STAKES.

ALL TREES MUST BE PRUNED AS PER LANDSCAPE ARCHITECT'S DIRECTION. SABAL PALMS MAY BE HURRICANE CUT.

ALL SHRUBS, TREES AND GROUND COVER WILL HAVE IMPROVED SOIL AS PER PLANTING SOIL NOTES. THE SOILS SHALL BE PLACED IN THE HOLE DURING PLANTING. TOP DRESSING ONLY IS NOT ACCEPTABLE.

DO NOT ALLOW AIR POCKETS TO FORM WHEN BACKFILLING. ALL TREES SHALL BE SPIKED IN UTILIZING WATER AND A TREE BAR.

THE LANDSCAPE CONTRACTOR SHALL WATER, MULCH, WEED, PRUNE, AND OTHERWISE MAINTAIN ALL PLANTS, INCLUDING SOD, UNTIL COMPLETION OF CONTRACT OR ACCEPTANCE BY LANDSCAPE ARCHITECT. SETTLED PLANTS SHALL BE RESET TO PROPER GRADE, PLANTING SAUCERS RESTORED, AND DEFECTIVE WORK CORRECTED.

THE LANDSCAPE CONTRACTOR SHALL AT ALL TIMES KEEP THE PREMISES FREE FROM ACCUMULATION OF WASTE MATERIALS OR DEBRIS CAUSED BY HIS CREWS DURING THE PERFORMANCE OF THE WORK. UPON COMPLETION OF THE WORK, THE CONTRACTOR SHALL REMOVE ALL WASTE MATERIALS, DEBRIS, UNUSED PLANT MATERIAL, EMPTY PLANT CONTAINERS AND ALL EQUIPMENT FROM THE PROJECT SITE.

UPON COMPLETION OF THE WORK, THE LANDSCAPE CONTRACTOR SHALL NOTIFY THE LANDSCAPE ARCHITECT AND REQUEST A FINAL INSPECTION. ANY ITEMS THAT ARE JUDGED INCOMPLETE OR UNACCEPTABLE BY THE LANDSCAPE ARCHITECT OR OWNER'S REPRESENTATIVE SHALL BE CORRECTED BY THE LANDSCAPE CONTRACTOR WITHIN 14 DAYS.

ALL LABOR AND MATERIAL FOR SOIL AMENDMENTS AND FERTILIZER THAT IS REQUIRED TO INSURE THE SUCCESSFUL ESTABLISHMENT AND SURVIVAL OF THE PROPOSED VEGETATION, AS WELL AS ALL THE COST FOR THE REMOVAL OF UNSUITABLE OR EXCESS BACKFILL MATERIAL, SHALL BE INCLUDED IN THE CONTRACTOR'S BID TO PERFORM THE WORK REPRESENTED IN THIS PLAN SET.

LANDSCAPE NOTES

ALL PLANT MATERIAL SHALL BE FLORIDA NUMBER 1 OR BETTER AS DEFINED BY THE DIVISION OF PLANT INDUSTRY FLORIDA GRADES AND STANDARDS LATEST EDITION.

ALL LANDSCAPE SHALL CONFORM TO THE REQUIREMENTS OF THE CITY OF FORT PIERCE LAND DEVELOPMENT REGULATIONS. THE CITY OF FORT PIERCE LANDSCAPE CODE (LDRs) SHALL GOVERN IN THE EVENT OF A CONFLICT.

VEGETATION REMOVAL PERMITS ARE REQUIRED PRIOR TO REMOVING, CLEARING OR STRIPPING ANY VEGETATION FROM THE PROPERTY.

AT THE TIME OF BUILDING PERMIT, THE APPLICANT SHALL EXECUTE HOLD HARMLESS AGREEMENTS WITH ALL APPLICABLE UTILITIES FOR LANDSCAPING WITHIN UTILITY EASEMENTS.

THE LANDSCAPE CONTRACTOR SHALL NOT MAKE ANY SUBSTITUTIONS AND/ OR CHANGES WITHOUT THE AUTHORIZATION OF THE CITY OF FORT PIERCE, THE OWNER AND THE LANDSCAPE ARCHITECT.

THE LANDSCAPE CONTRACTOR SHALL REVIEW THE PROJECT DRAINAGE AND UTILITY PLANS PRIOR TO CONSTRUCTION AND AVOID ALL CONFLICTS. THE LANDSCAPE CONTRACTOR SHALL VERIFY THE LOCATION OF ALL UNDERGROUND UTILITIES PRIOR TO COMMENCING WORK.

THE LANDSCAPE CONTRACTOR SHALL BE RESPONSIBLE FOR ALL PERMITS.

THE CONTRACTOR SHALL COORDINATE THE PLANTING AND TRIMMING OF STREET TREES TO ENSURE FULL VISIBILITY TO TRAFFIC CONTROL AND SAFETY SIGNAGE

TREES SHALL BE POSITIONED TO AVOID CONFLICTS WITH SIGNAGE AND SITE LIGHTING. LARGER TREES WILL BE PROVIDED AT INTERSECTIONS WHERE DEEMED NECESSARY.

ALL VEGETATION SHALL BE SELECTED AND POSITIONED SO THAT IT DOES NOT PRESENT OBSTRUCTIONS TO THE LINE OF SIGHT AT INTERSECTIONS PURSUANT TO SECTION 27-1262(a)(9)(c) OF THE CITY OF FORT PIERCE CODE.

ALL ABOVE GROUND UTILITIES I.E. TRANSFORMERS, SWITCH BOXES, AC CONDENSERS AND ALIKE SHALL BE FULLY SCREENED FROM VIEW ON THREE SIDES WITH LANDSCAPING. THE LANDSCAPING SHALL TO THE TALLEST POINT OF SAID EQUIPMENT AT TIME OF PLANTING.

ALL TREES SHALL BE LOCATED WITHIN A MULCH PLANTING BED WITH A MINIMUM OF TWO (2) FEET OF CLEARANCE TO THE EDGE OF THE BED.

SOD AND IRRIGATION SHALL BE INSTALLED IN ANY ADJACENT RIGHT OF WAY BETWEEN THE SIDEWALK AND THE CURB.

ALL SOD SHALL BE STENOTAPHRUM SECONDATUS FLORITAM-PALMETTO (ST. AUGUSTINE SOD).

TREES WITHIN PLANTING ISLANDS LESS THAN FIVE (5) FEET IN WIDTH SHALL BE LOCATED TO AVOID CONFLICTS WITH THE OVERHANGS OF VEHICLES.

TYPE D RAISED CONCRETE CURBING SHALL BE PROVIDED AROUND ALL PLANTING ISLANDS WITHIN VEHICULAR USE AREAS.

TREES AT ENTRANCE WAYS AND WITHIN SIGHT TRIANGLES SHALL BE TRIMMED IN SUCH A FASHION TO MINIMIZE SITE VISIBILITY CONFLICTS. CLEAR VISIBILITY SHALL BE MAINTAINED BETWEEN 30 INCHES AND 7 FEET. TEN FOOT BY THIRTY FOOT SIGHT VISIBILITY TRIANGLES SHALL BE PROVIDED AT THE INTERSECTIONS WITH THE PUBLIC RIGHT OF WAY. IN ADDITION ALL LANDSCAPING SHALL CONFORM TO THE REQUIREMENTS OF FOOT INDEX 546.

EARTH BERMS SHALL NOT EXCEED A 3:1 SLOPE 4:1 SLOPES OR GREATER ARE PREFERABLE.

ALL TREES PLANTED UNDER OR ADJACENT TO FPL POWER LINES WILL COMPLY WITH THE FPL RIGHT TREE IN THE RIGHT PLACE GUIDELINES (REV 5/95)

PERIMETER TREES AT THE TIME OF PLANTING SHALL BE SPACED IN A WAY THAT COMPLEMENTS THE SPACING OF ANY EXISTING TREES ON ADJACENT DEVELOPED AREAS.

ALL LANDSCAPE ISLANDS AND BEDS SHALL BE FREE FROM SHELL ROCK AND CONSTRUCTION DEBRIS, EXCAVATED TO A DEPTH OF 30 INCHES OR TO CLEAN NATIVE SOILS AND FILLED WITH THE SPECIFIED BACKFILL MIXTURE.

ALL LANDSCAPE ISLANDS SHALL INCORPORATE THE INSTALLATION OF MOUNDING OF NATIVE SOILS A MINIMUM OF SIX INCHES (6") ABOVE THE TOP OF CURB.

19.5" BID BARRIER ROOT BARRIER SHALL BE PROVIDED FOR SHADE TREES PLANTED WITHIN SIX (6) FEET OF PUBLIC CURBS, SIDEWALKS OR PUBLIC RIGHT OF WAYS. ALL ROOT BARRIER SHALL BE INSTALLED IN ACCORDANCE WITH THE MANUFACTURER'S RECOMMENDATIONS. THE TOTAL LENGTH OF THE ROOT BARRIERS SHALL BE 20' ADJACENT TO THE SIDEWALK AND 20' ADJACENT TO THE CURB.

ALL AREAS SHALL BE FULLY IRRIGATED IN ACCORDANCE WITH THE REQUIREMENTS OF THE CITY OF FORT PIERCE. THE IRRIGATION WATER SOURCE SHALL BE WELL WATER FOR COMMON AREAS AND POTABLE WATER AROUND THE BUILDING FOUNDATION.

CATCH BASINS AND DRAINAGE SHALL NOT BE LOCATED WITHIN REQUIRED PERIMETER BUFFERS OR PRESERVE AREAS.

THE IRRIGATION SYSTEM SHALL BE DESIGNED TO PROVIDE 100% OVERLAP COVERAGE TO ALL LANDSCAPE AND SOD AREAS.

THE IRRIGATION SYSTEM SHALL BE EQUIPPED WITH A RAIN SENSOR/CUT OFF SWITCH IN ACCORDANCE WITH STATE AND LOCAL REQUIREMENTS.

EXISTING TREES AND VEGETATION TO REMAIN SHALL BE STAKED AND BARRICADED PRIOR TO ANY LAND CLEARING. TREES TO BE RELOCATED SHALL BE ROOT PRUNED AND PROTECTED DURING CONSTRUCTION.

ALL TREES PROPOSED TO BE PRESERVED ON SITE SHALL BE PROTECTED IN ACCORDANCE WITH THE PROCEDURES OUTLINED IN DIVISION IV., VEGETATION REMOVAL REQUIREMENTS IN THE CITY OF FORT PIERCE CODE PRIOR TO THE ISSUANCE OF A C.O.

ANY AREA DESIGNATED WITH EXISTING VEGETATION TO REMAIN THAT IS DISTURBED DURING CONSTRUCTION WILL BE RESTORED WITH NATIVE PLANTINGS.

EXISTING TREES PRESERVED OR RELOCATED ON SITE SHALL BE PRUNED ACCORDING TO ANSI A300 STANDARDS OR BY AN ISA CERTIFIED ARBORIST.

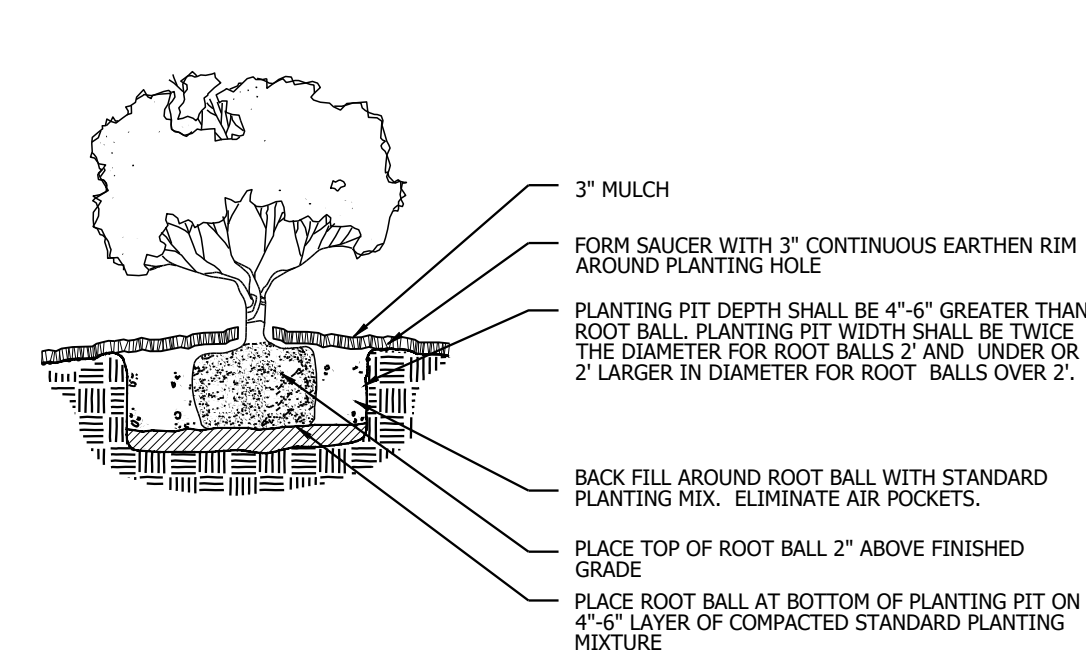
ALL EXISTING LANDSCAPING AND TREES TO REMAIN SHALL BE BARRICADED WITH ORANGE CONSTRUCTION BARRICADE. THE BARRICADE SHALL BE INSTALLED AT THE DRIP LINE OF THE TREE/PALM OR AT THE EDGE OF THE SHRUB MASS.

BARRICADES SHALL REMAIN IN PLACE THROUGHOUT THE DURATION OF CONSTRUCTION.

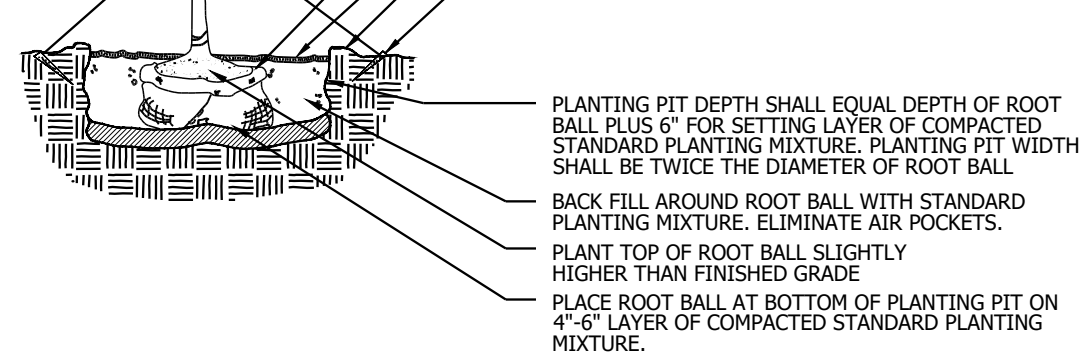
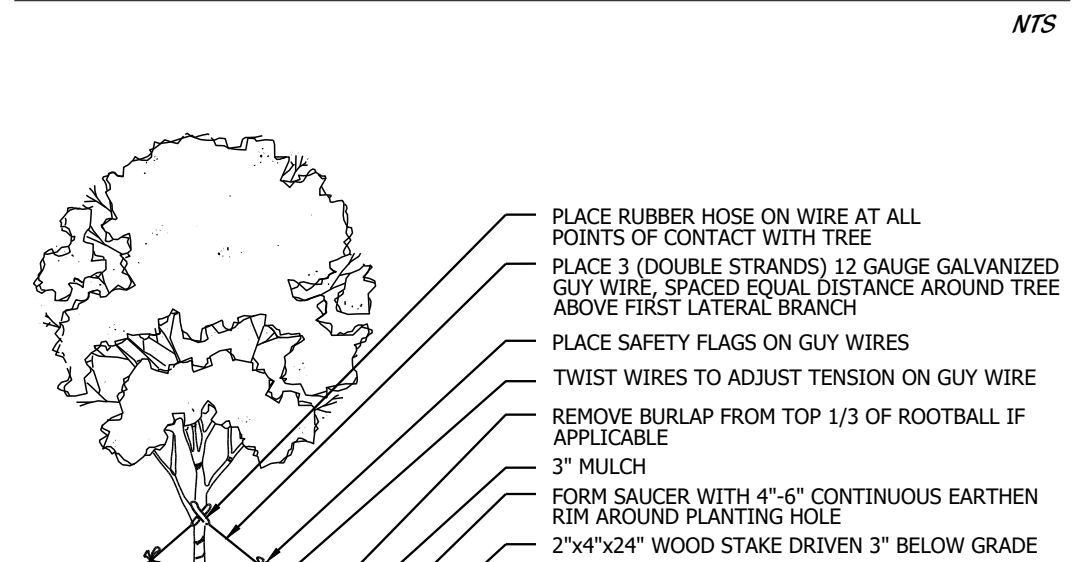
EXISTING, SUITABLE NATIVE VEGETATION LOCATED WITHIN THE PROPOSED DEVELOPMENT AREAS SHALL BE RELOCATED TO SUPPLEMENT THE LANDSCAPING. NATIVE VEGETATION SHALL BE RELOCATED BY TREE SPADE OR CRANE. PRIOR TO THE CLEARING OF THE SITE THE APPLICANT SHALL IDENTIFY ALL NATIVE VEGETATION TO BE RELOCATED.

RELOCATION METHODOLOGY: EXISTING NATIVE VEGETATION DETERMINED TO BE SUITABLE FOR RELOCATION SHALL BE RELOCATED TO TARGET AREAS USING HYDROLOGIC TREE SPADES. THE SIZE OF SPADE SHALL VARY FROM 90" TO 45" DEPENDING ON THE SIZE AND TYPE OF VEGETATION TO BE MOVED. THE APPLICANT SHALL IDENTIFY PRIOR TO THE CLEARING OF THE SITE ALL EXISTING NATIVE VEGETATION TO BE RELOCATED. FOLLOWING RELOCATION, VEGETATION SHALL BE WATERED DAILY FOR A PERIOD NOT LESS THAN 90 DAYS AFTER WHICH IT SHALL BE WATERED ON AN AS NEED BASIS TO INSURE SURVIVAL. AT A MINIMUM THE APPLICANT SHALL INSURE 60% SURVIVAL FOR ALL RELOCATED PLANT MATERIAL.

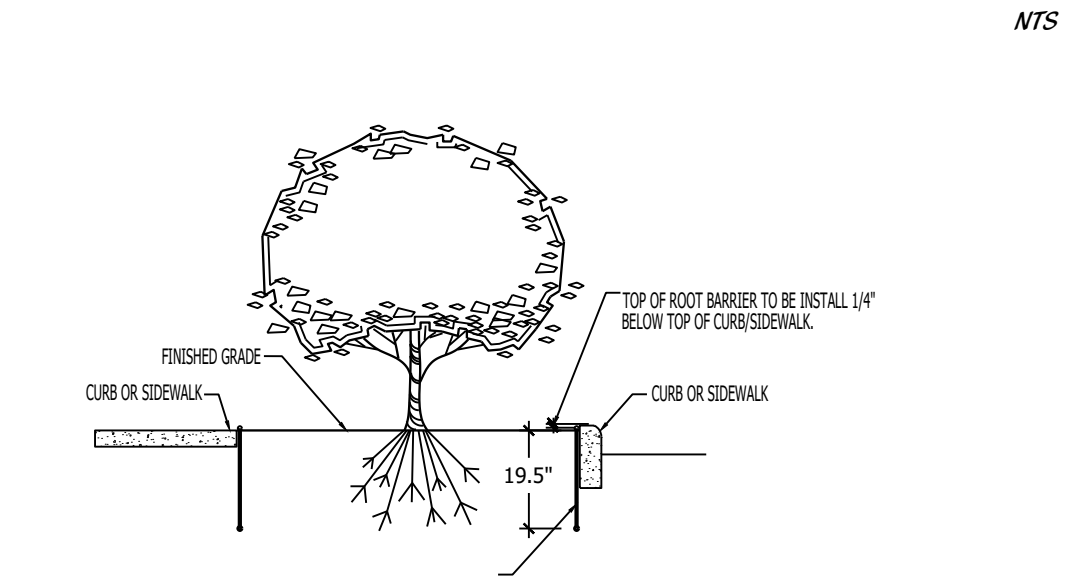
PLANTING DETAILS



SHRUB/GROUND COVER PLANTING DETAIL



LARGE TREE PLANTING DETAIL



ROOT BARRIER DETAIL



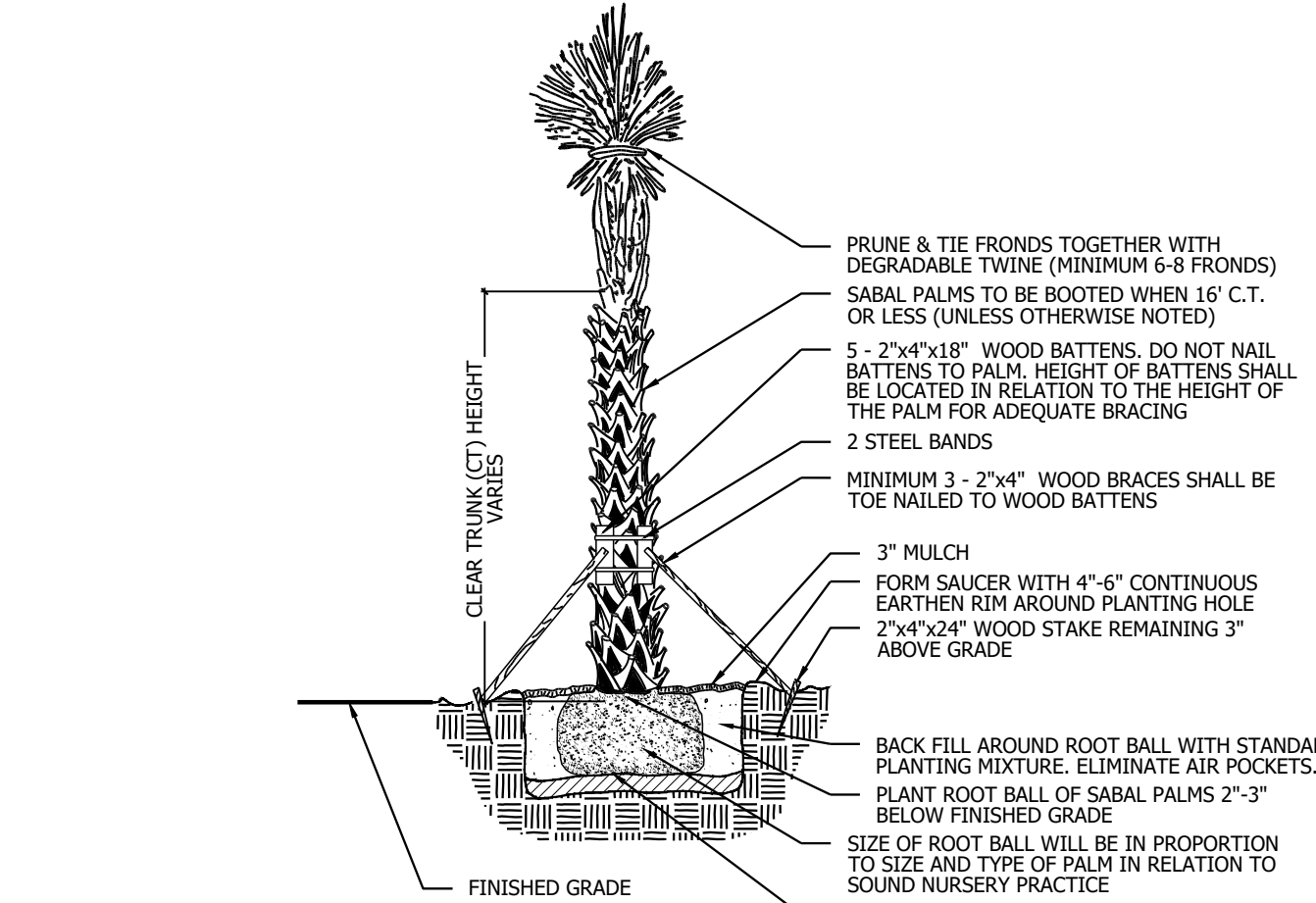
TYPICAL PLANT LIST

CODE	QTY	BOTANICAL NAME	COMMON NAME	CONTAINER	CALIPER	SIZE	NATIVE	REMARKS
TREES								
LH5	255	LIGUSTRUM JAPONICUM	JAPANESE PRIVET	45 GAL	MULTI TRUNK	7'-8" OA	N	MULTI-STEM, LIMB UP 2.5'
QV*	354	QUERCUS VIRGINIANA	LIVE OAK	65 GAL	2.5" CAL	12'-14" OA	Y	FULL CANOPY, 5' C.T. MIN.
RE*	103	ROYSTONIA ELEGATA	ROYAL PALM	FIELD GROWN	N/A	18" OA	Y	FULL CANOPY, 12' GW
PALM TREES								
AD3	1	VEITCHIA MERRILLII	TRIPLE TRUNK CHRISTMAS PALM	15 GAL.	N/A	6' - 8' CT	N	TRIPLE STEM, FULL CANOPY, MATCHED
AM1	3	VEITCHIA MERRILLII	SINGLE TRUNK CHRISTMAS PALM	FIELD GROWN	N/A	10' CT	N	FULL CANOPY, SINGLE TRUNK, MATCHED
PALMS								
SS2*	252	SABAL PALMETTO	CURVED CABBAGE PALM	B & B	N/A	10', 16', 22' CT, STOG.	Y	MIX S & C CURVED TRUNKS, SLICK CHARACTER, UNIQUE CURVES
SHRUBS								
C17*	3,832	CHRYSOBALANUS ICACO 'RED TIP'	RED TIP COCOPLUM	7 GAL	30" X 30"	2.5" O.C.	Y	FULL & THICK
CQ	1	CRINUM AUGUSTUM 'QUEEN EMMA'	'QUEEN EMMA' CRINUM	15 GAL	3'-4" OA	AS	N	FULL & THICK
SR	3	STRELITZIA REGINAE	ORANGE BIRD OF PARADISE	7 GAL	36" X 24"	AS	N	FULL & THICK
GROUND COVERS								
CV4	63	CODIAEUM X 'MAGNIFICENT'	MAGNIFICENT CROTON	7 GAL	30" X 30"	2.5" OC	N	FULL & THICK
FG	148	FIGUS MACROPHYLLA 'GREEN ISLAND'	GREEN ISLAND FIGUS	3 GAL	18" X 18"	2' OC	N	FULL & THICK
IX3	68	IXORA X 'MAUI YELLOW'	YELLOW MAUI IXORA	3 GAL	18" X 20"	2' OC	N	FULL & THICK
IXX	168	IXORA X 'NORA GRANT'	IXORA 'NORA GRANT'	3 GAL	2' X 2'	2' OC	N	FULL & THICK
PX	49	PHILLODENDRON X 'XANADU'	XANADU PHILLODENDRON	3 GAL	12"-15" HT	2' OC	N	FULL & THICK
PT	73	PITTIOSPORUM TOBIRA 'VARIEGATA'	VARIEGATED PITTIOSPORUM	3 GAL.	2' X 2'	2' O.C.	N	FULL & THICK
PD	128	PODOCARPUS MACR. 'PRINGLES' OR 'META'	DWARF PODOCARPUS	3 GAL	18" X 18"	2' OC	N	FULL & THICK

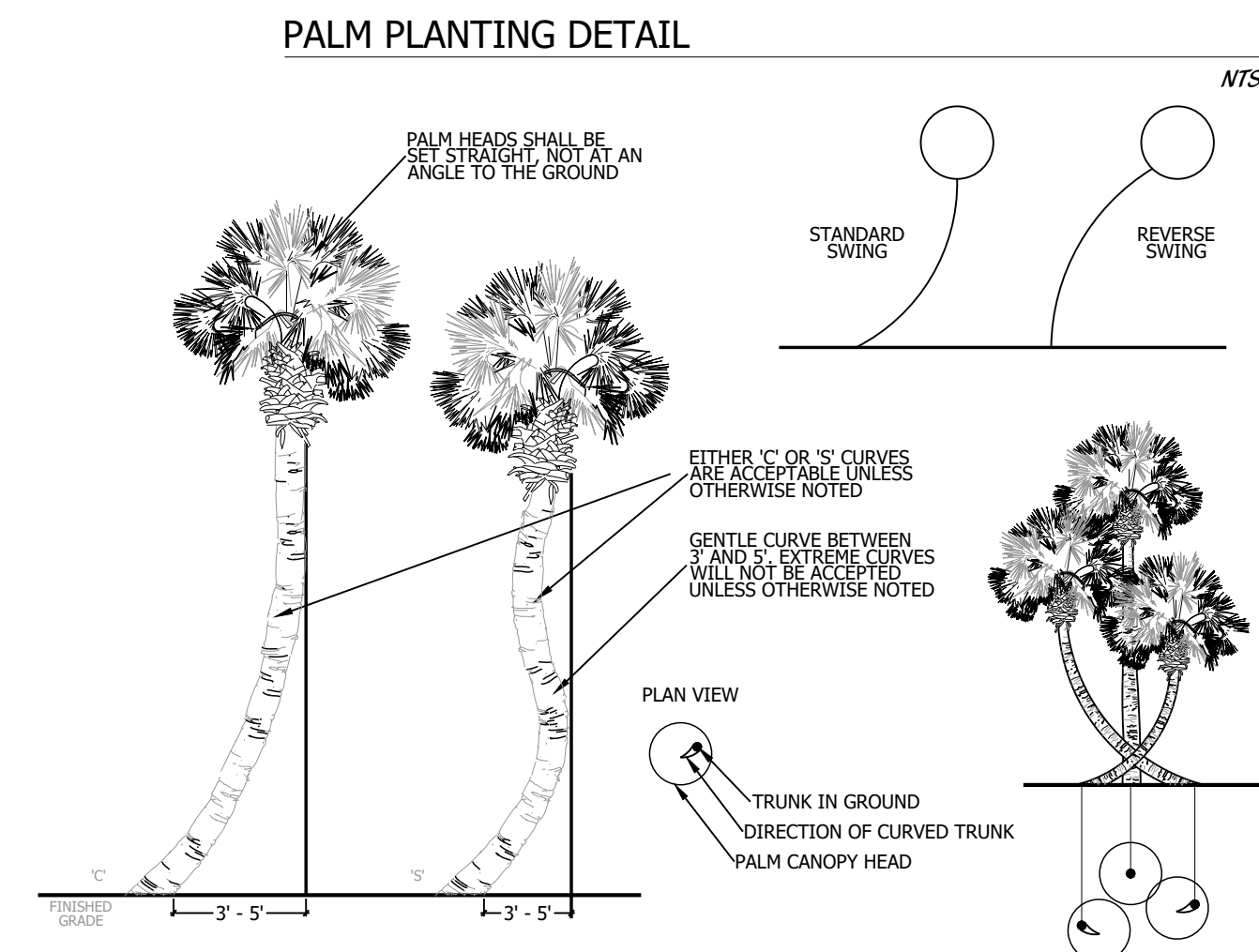
SOD - ST. AUGUSTINE 'FLORITAM' (TAKE OFF PROVIDED BY CONTRACTOR)

MULCH - CYPRESS

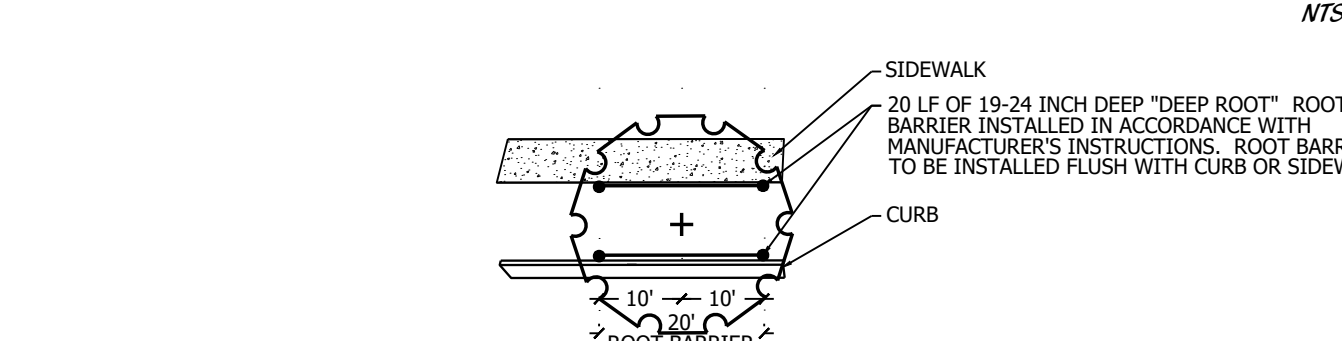
*DENOTES FLORIDA NATIVE PLANT MATERIAL



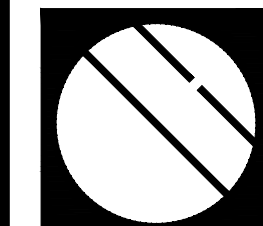
PALM PLANTING DETAIL



CURVED PALM TRUNK DETAIL



ROOT BARRIER DETAIL



Cotleur & Hearing

Landscape Architects
Land Planners
Environmental Consultants

1934 Commerce Lane
Suite 1
Jupiter, Florida 33458
561.747.6336 • Fax 747.1377

www.cotleurhearing.com
Lic# LC-C000239

SYMPHONY LAKES

Ft. Pierce, Florida

DESIGNED _____ PRP
DRAWN _____ PRP
APPROVED _____ LAH
JOB NUMBER _____ 21-1214
DATE _____ 09-19-25
REVISIONS _____

SHEET LP12 of 12

© COTLEUR & HEARING, INC.
These drawings are the property of the architect and are not to be used for extension or on other projects except by agreement in writing with the architect. Immediately report any discrepancies to the architect.

PLANNED DEVELOPMENT FINAL LANDSCAPE DETAILS