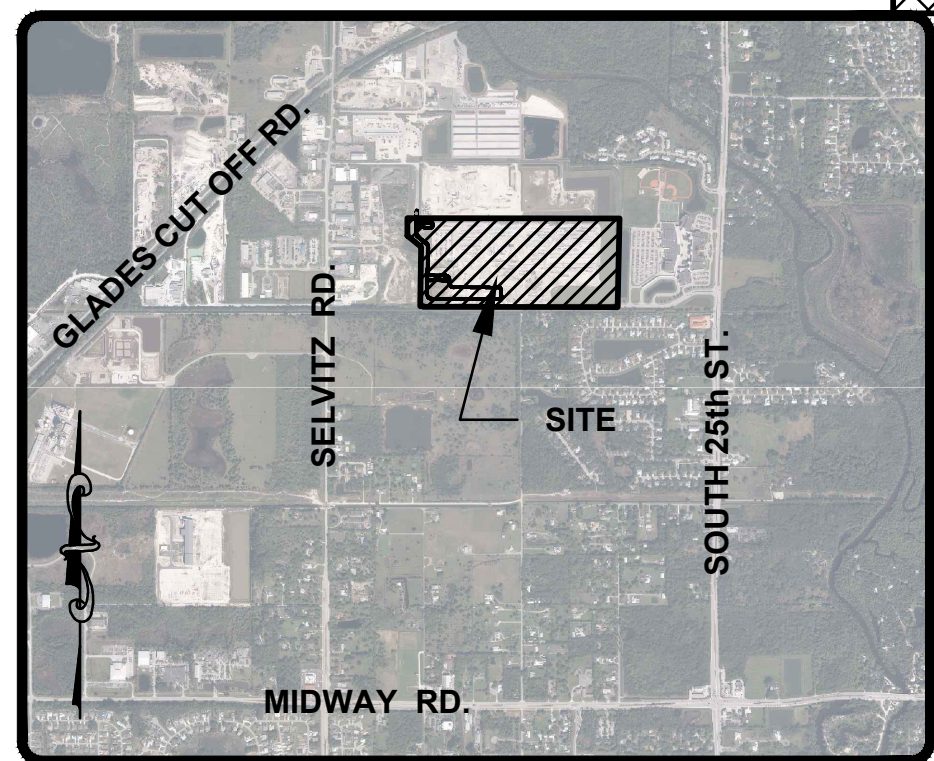


REFUSE
 Overall Length 35.000ft
 Overall Width 8.375ft
 Overall Body Height 10.546ft
 Min Body Ground Clearance 1.000ft
 Track Width 8.375ft
 Lock-to-lock time 6.00s
 Curb to Curb Turning Radius 29.300ft

LEGEND			
	EXISTING ELECTRIC PANEL		EXISTING UTILITY POLE
	EXISTING ELECTRIC BOX		EXISTING ELECTRIC METER
	HANDICAP PARKING SYMBOL		EX CONCRETE LIGHT POLE
	EXISTING CONCRETE		EX BENCHMARK (BM) OR GROUND CONTROL POINT (GCP)
	EXISTING PAVEMENT		EXISTING UTILITY POLE
	PROPOSED PAVEMENT		DRAINAGE FLOW ARROW
	PROPOSED CONCRETE		PROPOSED SIGN
	PROPOSED TURF BLOCK		PARKING STALL COUNT



REV	DATE	DESCRIPTION	BY	CHK
DRAWING ISSUE STATUS				

VEHICULAR CIRCULATION ANALYSIS

PROJECT: PRECAST SPECIALTIES, LLC
 CITY OF FORT PIERCE, FLORIDA

**VEHICULAR CIRCULATION ANALYSIS
 REFUSE TRUCK**

DATE	SCALE
DEC. 2024	AS NOTED
DRAWN BY: RAH	DESIGNED BY: MDL
CHECKED BY: MDL	
PROJECT No.: 24-226 SITE PLAN.DWG	
DRAWING No.:	REV:
REFUSE	



JOHNSON
 31-0001-000/0

FILE LOCATION: Z:\DC\2024\24-226- PRECAST SPECIALTIES - SELVITZ RD\ENGINEERING\AUTOCAD\DWG\24-226 SITE PLAN.DWG, 2025.08.19. 9:08 AM

NSLRWCD CANAL NO. 101
 S89°56'27"E 5262.19'