

CONSTRUCTION PLANS  
FOR

# GORDY CREEK PLANNED DEVELOPMENT SUBDIVISION

GORDY ROAD  
FORT PIERCE, FL 34945  
CITY OF FORT PIERCE, FLORIDA  
JULY 2025

**OWNER**  
ZENITEX VENTURES LTD  
44 COCONUT ROW, UNIT B-22  
PALM BEACH, FL 33480

**APPLICANT**  
GORDY CREEK, LLC  
1548 SE 6TH STREET  
DEERFIELD BEACH, FL 33441

**ENGINEER/AGENT**

**Mills, Short & Associates**  
700 22ND PLACE, STE. 2C/2D  
VERO BEACH, FLORIDA 32960  
PHONE: 772.226.7282

**SHEET INDEX:**

- C-1 TITLE SHEET
- C-2 GENERAL NOTES
- C-3 CONCEPTUAL GRADING AND DRAINAGE PLAN
- C-4 CONCEPTUAL GRADING AND DRAINAGE PLAN (CONCEPTUAL)
- C-5A PHASE 1 GRADING AND DRAINAGE PLAN (CONCEPTUAL)
- C-5B PHASE 1 GRADING AND DRAINAGE PLAN (CONCEPTUAL)
- C-6A PHASE 2 GRADING AND DRAINAGE PLAN (CONCEPTUAL)
- C-6B PHASE 2 GRADING AND DRAINAGE PLAN (CONCEPTUAL)
- C-7A PAVING, GRADING AND DRAINAGE DETAILS
- C-7B PAVING, GRADING AND DRAINAGE DETAILS
- C-8 UTILITY DETAILS
- C-9 UTILITY DETAILS
- C-10 STORMWATER POLLUTION PREVENTION PLAN

**LEGAL DESCRIPTION:**

Parcel ID's: 2328-130-0000-000-7  
2328-130-0000-010-3

LANDS SITUATE IN SECTION 26, TOWNSHIP 35 SOUTH, RANGE 39 EAST, ST. LUCIE COUNTY, FLORIDA, AS FOLLOWS:

**PARCEL 1**  
BEGINNING ON THE QUARTER SECTION LINE 64 FEET WEST OF THE SOUTHEAST CORNER OF THE NORTHWEST 1/4 OF THE NORTHWEST 1/4 OF SECTION 26, TOWNSHIP 35 SOUTH, RANGE 39 EAST; RUN THENCE NORTH 11 DEGREES 35 MINUTES WEST 418 FEET TO CENTER OF GULLY; THENCE FOLLOWING CENTER OF GULLY TO QUARTER SECTION LINE AT A POINT 334.5 FEET WEST OF POINT OF BEGINNING; THENCE EAST 304.9 FEET TO POINT OF BEGINNING.

AND

BEGINNING AT THE NORTHWEST CORNER OF THE NORTHEAST 1/4 OF THE SOUTHEAST 1/4 OF SECTION 26, TOWNSHIP 35 SOUTH, RANGE 39 EAST; THENCE SOUTHERLY 110 FEET TO THE POINT OF BEGINNING; THENCE TURNING EASTERLY AT AN ANGLE OF 122 DEGREES 57 MINUTES TO THE FOREGOING LINE AND RUN 199.8 FEET; THENCE TURN NORTHERLY AT AN ANGLE OF 140 DEGREES 13 MINUTES AND RUN 300 FEET; THENCE RUN NORTHERLY AT AN ANGLE OF 82 DEGREES 42 MINUTES AND RUN 189 FEET TO THE QUARTER SECTION LINE; THENCE ALONG THE QUARTER SECTION LINE 422.8 FEET TO THE POINT OF BEGINNING.

AND

THE SOUTH 1/2 OF THE NORTHEAST 1/4 OF SECTION 26, TOWNSHIP 35 SOUTH, RANGE 39 EAST.

AND

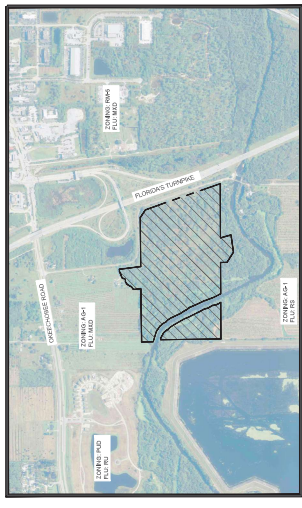
**PARCEL 2**  
BEGIN 64 FEET WEST OF THE SOUTHEAST CORNER OF THE NORTHEAST 1/4 OF THE NORTHEAST 1/4 OF SECTION 26, TOWNSHIP 35 SOUTH, RANGE 39 EAST; RUN NORTH 5 DEGREES 45 MINUTES 11 SECONDS WEST 378.88 FEET ALONG THE WEST LINE OF GORDY ROAD TO CENTER OF GULLY; THENCE FOLLOW THE CENTER OF THE GULLY TO A POINT ON THE SOUTH LINE OF THE NORTHWEST 1/4 OF THE NORTHEAST 1/4; THENCE EAST 385.78 FEET TO THE POINT OF BEGINNING.

EXCEPTING THEREFROM ALL RIGHTS OF WAY FOR PUBLIC ROADS AND CANALS.

PARCELS CONTAINING A TOTAL OF 3,309,736.76 SQUARE FEET (75,881 ACRES) MORE OR LESS.



LOCATION MAP  
SCALE: N.T.S.



VICINITY MAP  
SCALE: N.T.S.

**Mills, Short & Associates**  
WEBSITE: www.mills-short.com  
PHONE: 772.226.7282  
C.A. # 30988  
700 22nd Place, Suite 2C/2D  
Vero Beach, Florida 32960

REVISION	DATE	COMMENTS
1	07/27/25	ISSUED FOR PERMITS
2	07/27/25	ISSUED FOR PERMITS
3	07/27/25	ISSUED FOR PERMITS
4	07/27/25	ISSUED FOR PERMITS
5	07/27/25	ISSUED FOR PERMITS

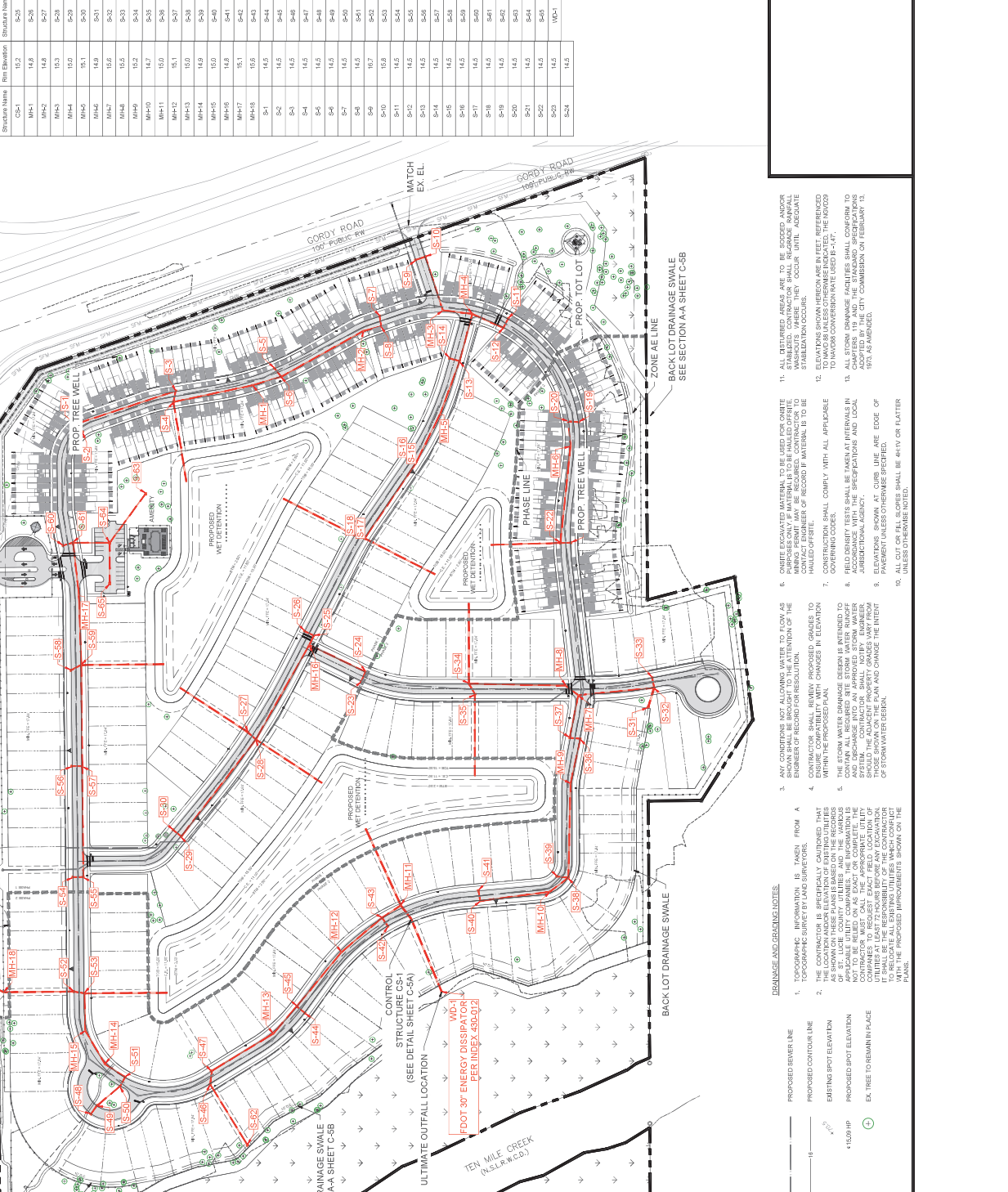
APPROVED BY	JMM
DATE	07/27/25
PROJECT NO.	2328-130-0000-010-3
SHEET NO.	G-1
TITLE SHEET	
DRAWN BY	KKR
CHECKED BY	JMM
SCALE	AS SHOWN
CITY OF FORT PIERCE	
FLORIDA 34945	
GORDY CREEK RESIDENTIAL	





**Mills, Short & Associates**  
 WEBSITE: www.mills-short.com  
 PHONE: 772.228.7282  
 C.A. # 30980  
 760 22nd Place, Suite 2000  
 West Palm Beach, Florida 33411

Structure Name	Rim Elevation	Structure Name	Rim Elevation
CS-1	15.2	MS-1	14.5
MH-1	14.2	MS-2	14.5
MH-2	14.2	MS-3	14.5
MH-3	15.3	MS-4	14.5
MH-4	15.0	MS-5	14.5
MH-5	15.1	MS-6	14.5
MH-6	14.9	MS-7	14.5
MH-7	15.6	MS-8	14.5
MH-8	15.2	MS-9	14.5
MH-9	15.2	MS-10	14.5
MH-10	14.7	MS-11	14.5
MH-11	15.0	MS-12	14.5
MH-12	15.1	MS-13	14.5
MH-13	15.0	MS-14	14.5
MH-14	14.9	MS-15	14.5
MH-15	14.9	MS-16	14.5
MH-16	14.9	MS-17	14.5
MH-17	15.1	MS-18	14.5
MH-18	14.9	MS-19	14.5
MH-19	15.1	MS-20	14.5
MH-20	15.6	MS-21	14.5
MH-21	15.2	MS-22	14.5
MH-22	15.1	MS-23	14.5
MH-23	15.0	MS-24	14.5
MH-24	14.9	MS-25	14.5
MH-25	14.9	MS-26	14.5
MH-26	14.9	MS-27	14.5
MH-27	14.9	MS-28	14.5
MH-28	14.9	MS-29	14.5
MH-29	14.9	MS-30	14.5
MH-30	14.9	MS-31	14.5
MH-31	14.9	MS-32	14.5
MH-32	14.9	MS-33	14.5
MH-33	14.9	MS-34	14.5
MH-34	14.9	MS-35	14.5
MH-35	14.9	MS-36	14.5
MH-36	14.9	MS-37	14.5
MH-37	14.9	MS-38	14.5
MH-38	14.9	MS-39	14.5
MH-39	14.9	MS-40	14.5
MH-40	14.9	MS-41	14.5
MH-41	14.9	MS-42	14.5
MH-42	14.9	MS-43	14.5
MH-43	14.9	MS-44	14.5
MH-44	14.9	MS-45	14.5
MH-45	14.9	MS-46	14.5
MH-46	14.9	MS-47	14.5
MH-47	14.9	MS-48	14.5
MH-48	14.9	MS-49	14.5
MH-49	14.9	MS-50	14.5
MH-50	14.9	MS-51	14.5
MH-51	14.9	MS-52	14.5
MH-52	14.9	MS-53	14.5
MH-53	14.9	MS-54	14.5
MH-54	14.9	MS-55	14.5
MH-55	14.9	MS-56	14.5
MH-56	14.9	MS-57	14.5
MH-57	14.9	MS-58	14.5
MH-58	14.9	MS-59	14.5
MH-59	14.9	MS-60	14.5
MH-60	14.9	MS-61	14.5
MH-61	14.9	MS-62	14.5
MH-62	14.9	MS-63	14.5
MH-63	14.9	MS-64	14.5
MH-64	14.9	MS-65	14.5
MH-65	14.9	MS-66	14.5
MH-66	14.9	MS-67	14.5
MH-67	14.9	MS-68	14.5
MH-68	14.9	MS-69	14.5
MH-69	14.9	MS-70	14.5
MH-70	14.9	MS-71	14.5
MH-71	14.9	MS-72	14.5
MH-72	14.9	MS-73	14.5
MH-73	14.9	MS-74	14.5
MH-74	14.9	MS-75	14.5
MH-75	14.9	MS-76	14.5
MH-76	14.9	MS-77	14.5
MH-77	14.9	MS-78	14.5
MH-78	14.9	MS-79	14.5
MH-79	14.9	MS-80	14.5
MH-80	14.9	MS-81	14.5
MH-81	14.9	MS-82	14.5
MH-82	14.9	MS-83	14.5
MH-83	14.9	MS-84	14.5
MH-84	14.9	MS-85	14.5
MH-85	14.9	MS-86	14.5
MH-86	14.9	MS-87	14.5
MH-87	14.9	MS-88	14.5
MH-88	14.9	MS-89	14.5
MH-89	14.9	MS-90	14.5
MH-90	14.9	MS-91	14.5
MH-91	14.9	MS-92	14.5
MH-92	14.9	MS-93	14.5
MH-93	14.9	MS-94	14.5
MH-94	14.9	MS-95	14.5
MH-95	14.9	MS-96	14.5
MH-96	14.9	MS-97	14.5
MH-97	14.9	MS-98	14.5
MH-98	14.9	MS-99	14.5
MH-99	14.9	MS-100	14.5



**PROP. LEGEND:**

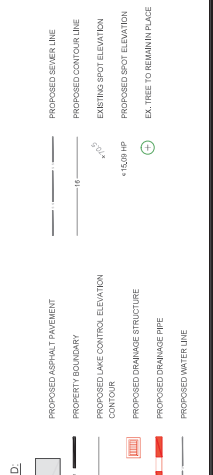
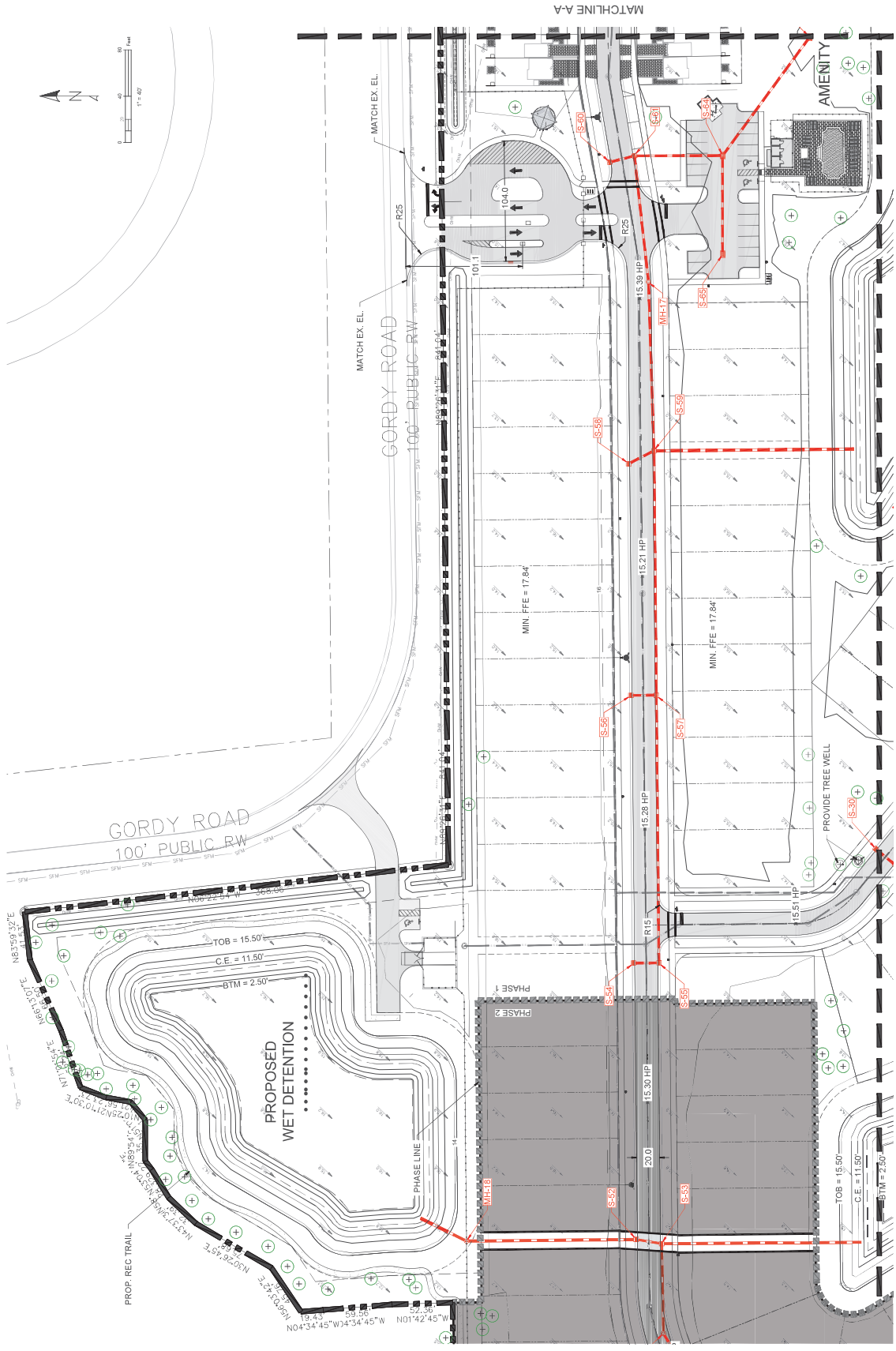
- PROPOSED ASPHALT PAVEMENT
- PROPERTY BOUNDARY
- PROPOSED LINE CONTROL ELEVATION
- EXISTING SPOT ELEVATION
- PROPOSED SPOT ELEVATION
- EX. TREE TO REMAIN IN PLACE
- PROPOSED DRAINAGE STRUCTURE
- PROPOSED DRAINAGE PIPE
- PROPOSED WATER LINE

**DRAINAGE AND GRADING NOTES:**

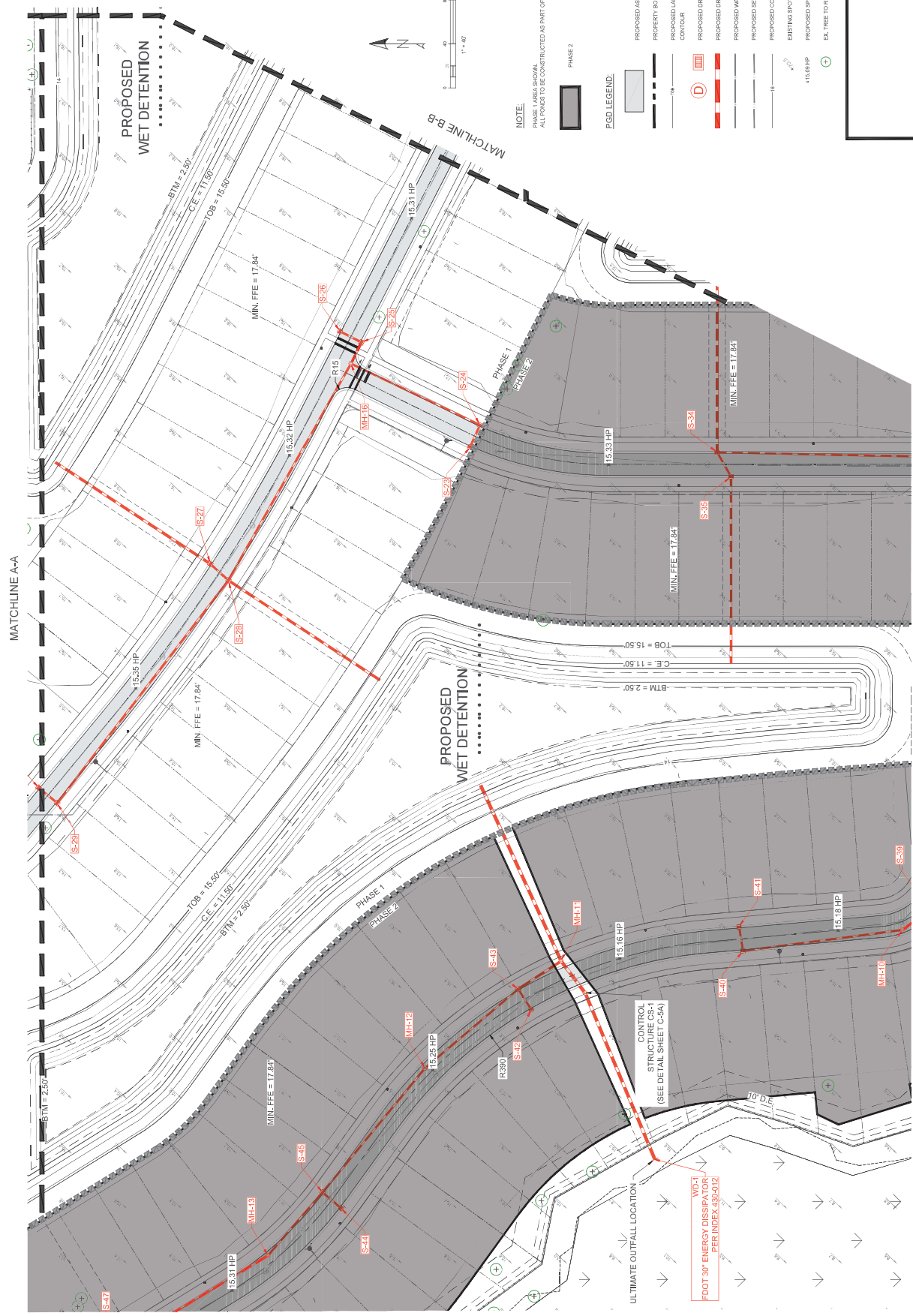
- TOPOGRAPHIC INFORMATION IS TAKEN FROM A SURVEY DATED 05/11/2023.
- THE CONTRACTOR IS SPECIFICALLY CAUTIONED THAT THE LOCATION AND/OR ELEVATION OF EXISTING UTILITIES (ST. LIGHT, COUNTY, UTILITIES AND THE VARIOUS TYPES OF UTILITIES) SHOWN ON THIS PLAN ARE NOT TO BE RELIED ON AS EXACT FOR COMPLETE CONSTRUCTION. THE CONTRACTOR SHALL VERIFY THE LOCATION AND DEPTH OF ALL UTILITIES AT LEAST 72 HOURS BEFORE ANY EXCAVATION. TO RELOCATE ALL EXISTING UTILITIES WHICH CONFLICT WITH THE PROPOSED IMPROVEMENTS SHOWN ON THE PLANS.
- ANY CONTRACTOR USE OF UTILITIES SHALL BE IN ACCORDANCE WITH THE SPECIFICATIONS AND LOCAL JURISDICTIONAL AGENCY.
- CONTRACTOR SHALL COMPLY WITH ALL APPLICABLE GOVERNING CODES.
- THE STORM WATER DRAINAGE DESIGN IS INTENDED TO MAINTAIN THE EXISTING STORM WATER AND DISCHARGE INTO AN APPROVED STORM WATER RECEIVING BODY. THE CONTRACTOR SHALL VERIFY THE LOCATION AND DEPTH OF ALL UTILITIES AT LEAST 72 HOURS BEFORE ANY EXCAVATION. TO RELOCATE ALL EXISTING UTILITIES WHICH CONFLICT WITH THE PROPOSED IMPROVEMENTS SHOWN ON THE PLANS.
- CONTRACTOR SHALL VERIFY ALL UTILITIES TO BE EXCAVATED PRIOR TO THE START OF CONSTRUCTION. CONTRACTOR SHALL BE RESPONSIBLE FOR VERIFYING THE LOCATION AND DEPTH OF ALL UTILITIES TO BE EXCAVATED PRIOR TO THE START OF CONSTRUCTION.
- CONTRACTOR SHALL COMPLY WITH ALL APPLICABLE GOVERNING CODES.
- CONTRACTOR SHALL COMPLY WITH ALL APPLICABLE GOVERNING CODES.
- ELEVATIONS SHOWN HEREON ARE IN FEET REFERENCED TO NAVD83 UNLESS OTHERWISE INDICATED. THE NAVD83 TO NAD83 CONVERSION TABLE IS USED 14-17.
- ELEVATIONS SHOWN HEREON ARE IN FEET REFERENCED TO NAVD83 UNLESS OTHERWISE INDICATED. THE NAVD83 TO NAD83 CONVERSION TABLE IS USED 14-17.
- CHAPTERS 19 AND 20 OF THE STANDARD SPECIFICATIONS FOR ROAD AND BRIDGE CONSTRUCTION, FEBRUARY 13, 2004, SHALL APPLY.
- ELEVATIONS SHOWN AT CURB LINE ARE EDGE OF CURB UNLESS OTHERWISE NOTED.
- ALL CUT OR FILL SLOPES SHALL BE 4:1V OR FLATTER UNLESS OTHERWISE NOTED.

**STRUCTURE TABLE**

Structure Name	Rim Elevation	Structure Name	Rim Elevation
CS-1	15.2	MS-1	14.5
MH-1	14.2	MS-2	14.5
MH-2	14.2	MS-3	14.5
MH-3	15.3	MS-4	14.5
MH-4	15.0	MS-5	14.5
MH-5	15.1	MS-6	14.5
MH-6	14.9	MS-7	14.5
MH-7	15.6	MS-8	14.5
MH-8	15.2	MS-9	14.5
MH-9	15.2	MS-10	14.5
MH-10	14.7	MS-11	14.5
MH-11	15.0	MS-12	14.5
MH-12	15.1	MS-13	14.5
MH-13	15.0	MS-14	14.5
MH-14	14.9	MS-15	14.5
MH-15	14.9	MS-16	14.5
MH-16	14.9	MS-17	14.5
MH-17	15.1	MS-18	14.5
MH-18	14.9	MS-19	14.5
MH-19	15.1	MS-20	14.5
MH-20	15.6	MS-21	14.5
MH-21	15.2	MS-22	14.5
MH-22	15.1	MS-23	14.5
MH-23	15.0	MS-24	14.5
MH-24	14.9	MS-25	14.5
MH-25	14.9	MS-26	14.5
MH-26	14.9	MS-27	14.5
MH-27	14.9	MS-28	14.5
MH-28	14.9	MS-29	14.5
MH-29	14.9	MS-30	14.5
MH-30	14.9	MS-31	14.5
MH-31	14.9	MS-32	14.5
MH-32	14.9	MS-33	14.5
MH-33	14.9	MS-34	14.5
MH-34	14.9	MS-35	14.5
MH-35	14.9	MS-36	14.5
MH-36	14.9	MS-37	14.5
MH-37	14.9	MS-38	14.5
MH-38	14.9	MS-39	14.5
MH-39	14.9	MS-40	14.5
MH-40	14.9	MS-41	14.5
MH-41	14.9	MS-42	14.5
MH-42	14.9	MS-43	14.5
MH-43	14.9	MS-44	14.5
MH-44	14.9	MS-45	14.5
MH-45	14.9	MS-46	14.5
MH-46	14.9	MS-47	14.5
MH-47	14.9	MS-48	14.5
MH-48	14.9	MS-49	14.5
MH-49	14.9	MS-50	14.5
MH-50	14.9	MS-51	14.5
MH-51	14.9	MS-52	14.5
MH-52	14.9	MS-53	14.5
MH-53	14.9	MS-54	14.5
MH-54	14.9	MS-55	14.5
MH-55	14.9	MS-56	14.5
MH-56	14.9	MS-57	14.5
MH-57	14.9	MS-58	14.5
MH-58	14.9	MS-59	14.5
MH-59	14.9	MS-60	14.5
MH-60	14.9	MS-61	14.5
MH-61	14.9	MS-62	14.5
MH-62	14.9	MS-63	14.5
MH-63	14.9	MS-64	14.5
MH-64	14.9	MS-65	14.5
MH-65	14.9	MS-66	14.5
MH-66	14.9	MS-67	14.5
MH-67	14.9	MS-68	14.5
MH-68	14.9	MS-69	14.5
MH-69	14.9	MS-70	14.5
MH-70	14.9	MS-71	14.5
MH-71	14.9	MS-72	14.5
MH-72	14.9	MS-73	14.5
MH-73	14.9	MS-74	14.5
MH-74	14.9	MS-75	14.5
MH-75	14.9	MS-76	14.5
MH-76	14.9	MS-77	14.5
MH-77	14.9	MS-78	14.5
MH-78	14.9	MS-79	14.5
MH-79	14.9	MS-80	14.5
MH-80	14.9	MS-81	14.5
MH-81	14.9	MS-82	14.5
MH-82	14.9	MS-83	14.5
MH-83	14.9	MS-84	14.5
MH-84	14.9	MS-85	14.5
MH-85	14.9	MS-86	14.5
MH-86	14.9	MS-87	14.5
MH-87	14.9	MS-88	14.5
MH-88	14.9	MS-89	14.5
MH-89	14.9	MS-90	14.5
MH-90	14.9	MS-91	14.5
MH-91	14.9	MS-92	14.5
MH-92	14.9	MS-93	14.5
MH-93	14.9	MS-94	14.5
MH-94	14.9	MS-95	14.5
MH-95	14.9	MS-96	14.5
MH-96	14.9	MS-97	14.5
MH-97	14.9	MS-98	14.5
MH-98	14.9	MS-99	14.5
MH-99	14.9	MS-100	14.5



ISSUE	DATE	COMMENTS

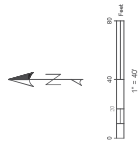


NOTE:  
ALL UTILITIES SHOWN  
ALLOWED TO BE CONSTRUCTED AS PART OF PHASE 1.

PHASE 2

- PGO LEGEND:
- PROPOSED ASPHALT PAVEMENT
  - PROPERTY BOUNDARY
  - PROPOSED LAKE CONTROL ELEVATION
  - CONTOUR
  - PROPOSED DRAINAGE STRUCTURE
  - PROPOSED DRAINAGE PIPE
  - PROPOSED WATER LINE
  - PROPOSED SEWER LINE
  - PROPOSED CONTROL LINE
  - EXISTING SPOT ELEVATION
  - PROPOSED SPOT ELEVATION
  - EX. TREE TO REMAIN IN PLACE

ISSUE	DATE	COMMENTS

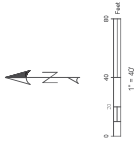


**NOTE:**  
 PHASE 1 AREA SHOWN.  
 ALL POINTS TO BE CONSTRUCTED AS PART OF PHASE 1.

- PHASE 2**
- PSD LEGEND:**
- PROPOSED ASPHALT PAVEMENT
  - PROPERTY BOUNDARY
  - PROPOSED LAKE CONTROL ELEVATION CONTOUR
  - PROPOSED DRAINAGE STRUCTURE
  - PROPOSED DRAINAGE PIPE
  - PROPOSED WATER LINE
  - PROPOSED SEWER LINE
  - PROPOSED CONTOUR LINE
  - EXISTING SPOT ELEVATION
  - PROPOSED SPOT ELEVATION
  - EX. TREE TO REMAIN IN PLACE



ISSUE	DATE	COMMENTS



**NOTE:**  
 PHASE 1 AREA SHOWN.  
 ALL PONDS TO BE CONSTRUCTED AS PART OF PHASE 1.

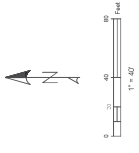
PHASE 2

**POND LEGEND:**

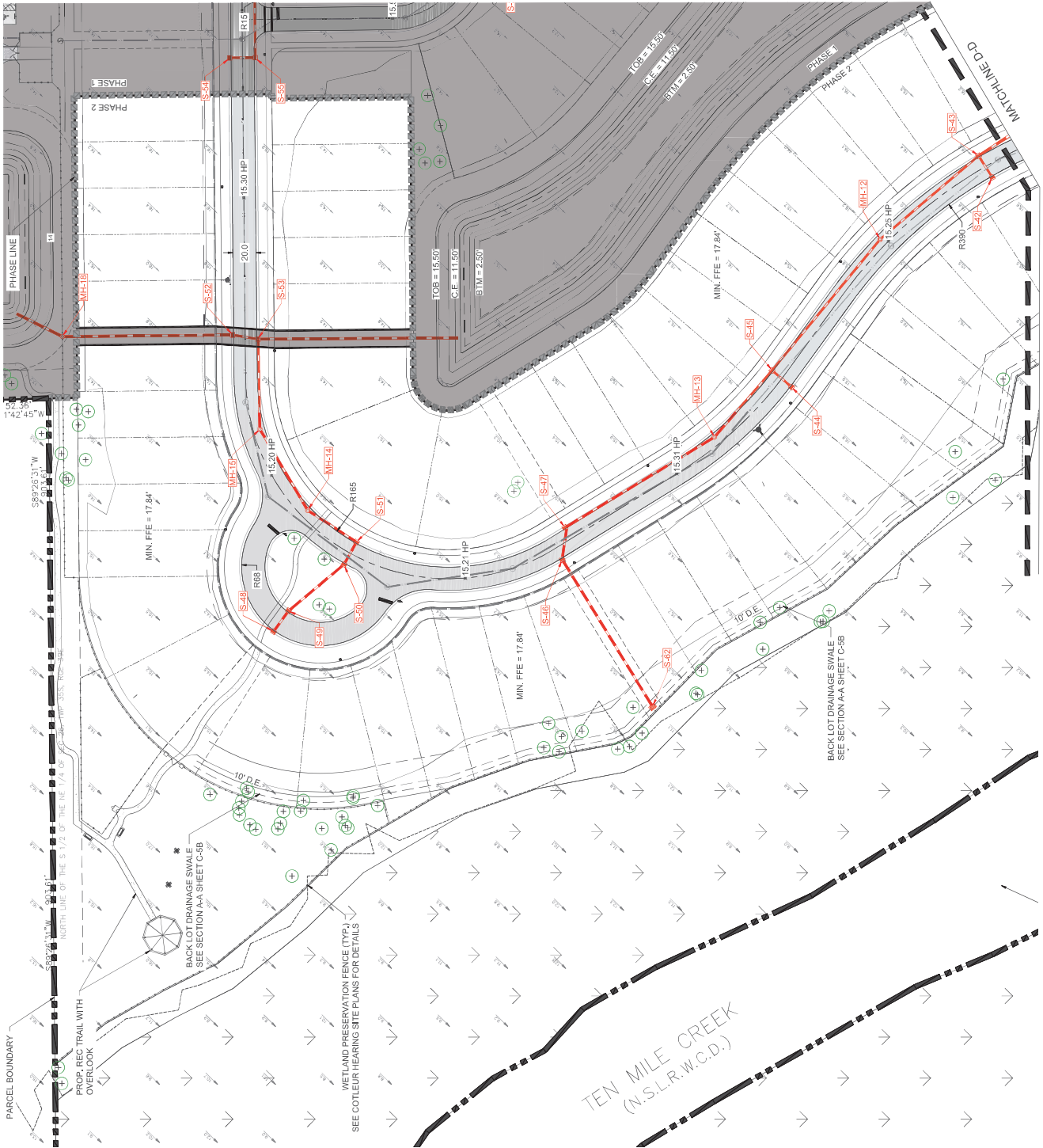
- PROPOSED ASPHALT PAVEMENT
- PROPERTY BOUNDARY
- PROPOSED LAKE CONTROL ELEVATION CONTOUR
- PROPOSED DRAINAGE STRUCTURE
- PROPOSED DRAINAGE PIPE
- PROPOSED WATER LINE
- PROPOSED SEWER LINE
- PROPOSED CONTROL LINE
- EXISTING SPOT ELEVATION
- PROPOSED SPOT ELEVATION
- EX. TREE TO REMAIN IN PLACE



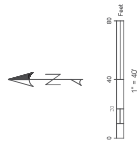
REV#	DATE	COMMENTS



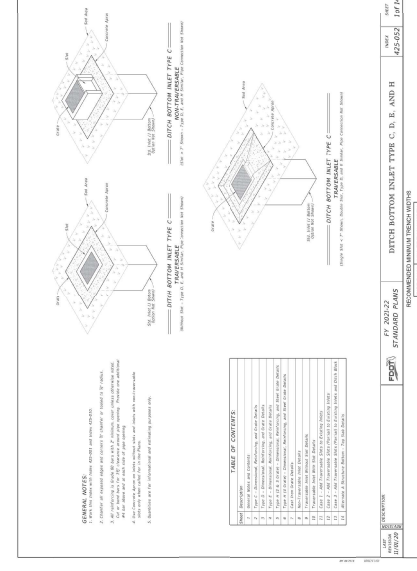
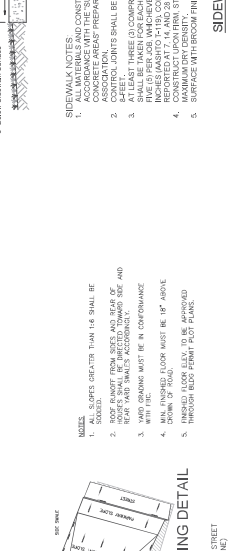
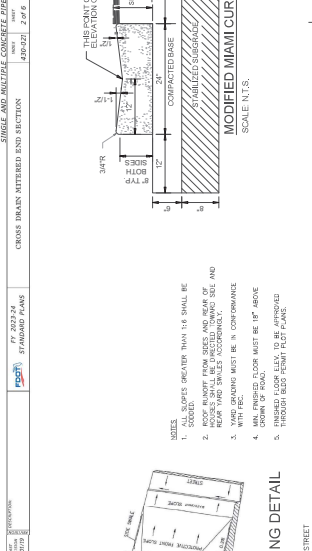
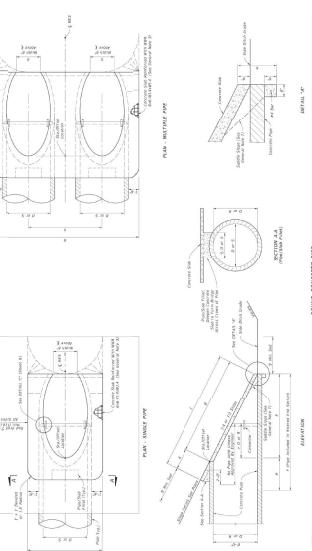
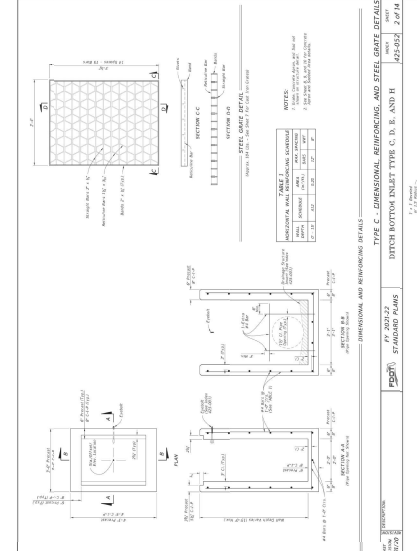
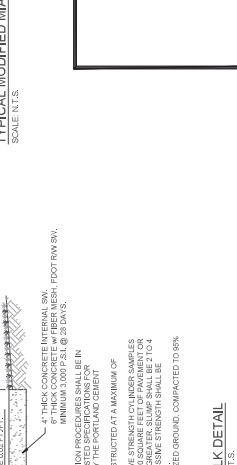
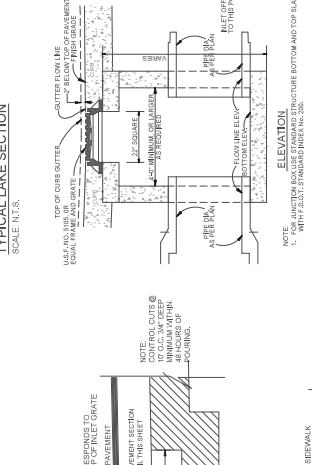
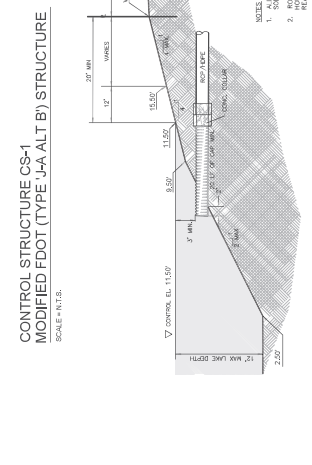
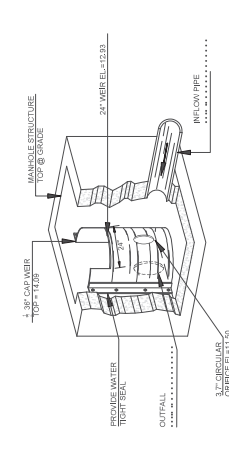
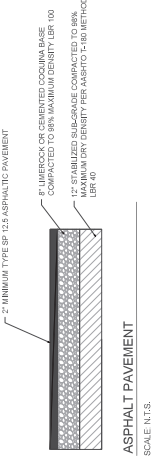
**NOTE:**  
 PHASE 2 AREA SHOWN:  
 ALL PAVES TO BE CONSTRUCTED AS PART OF PHASE 1.



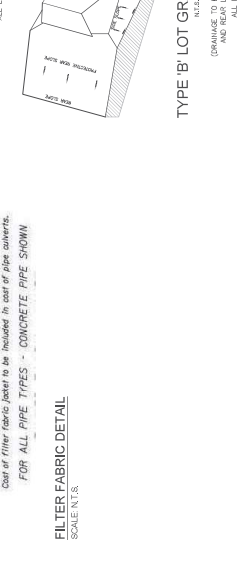
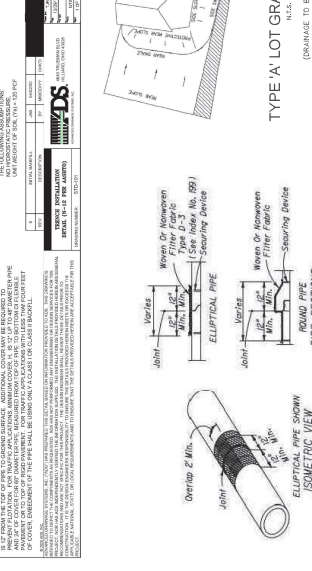




- PG&D LEGEND:**
- PROPOSED ASPHALT PAVEMENT
  - PROPERTY BOUNDARY
  - PROPOSED LAKE CONTROL ELEVATION CONTOUR
  - PROPOSED DRAINAGE STRUCTURE
  - PROPOSED DRAINAGE PIPE
  - PROPOSED WATER LINE
- NOTE:**  
 PHASE 2 ZARBA SWTAL  
 ALL PONDS TO BE CONSTRUCTED AS PART OF PHASE 1.
- PROPOSED SEWER LINE
  - PROPOSED CONTOUR LINE
  - EXISTING SPOT ELEVATION
  - PROPOSED SPOT ELEVATION
  - EX. TREE TO REMAIN IN PLACE
- PHASE 1



PIPE DIA.	INVERT	DEPTH	LENGTH	WEIGHT	AREA	PERIMETER	MOISTURE	STRENGTH	STIFFNESS
12"	12"	12"	12"	12"	12"	12"	12"	12"	12"
18"	18"	18"	18"	18"	18"	18"	18"	18"	18"
24"	24"	24"	24"	24"	24"	24"	24"	24"	24"
30"	30"	30"	30"	30"	30"	30"	30"	30"	30"
36"	36"	36"	36"	36"	36"	36"	36"	36"	36"
42"	42"	42"	42"	42"	42"	42"	42"	42"	42"
48"	48"	48"	48"	48"	48"	48"	48"	48"	48"
54"	54"	54"	54"	54"	54"	54"	54"	54"	54"
60"	60"	60"	60"	60"	60"	60"	60"	60"	60"
66"	66"	66"	66"	66"	66"	66"	66"	66"	66"
72"	72"	72"	72"	72"	72"	72"	72"	72"	72"
78"	78"	78"	78"	78"	78"	78"	78"	78"	78"
84"	84"	84"	84"	84"	84"	84"	84"	84"	84"
90"	90"	90"	90"	90"	90"	90"	90"	90"	90"
96"	96"	96"	96"	96"	96"	96"	96"	96"	96"
102"	102"	102"	102"	102"	102"	102"	102"	102"	102"
108"	108"	108"	108"	108"	108"	108"	108"	108"	108"
114"	114"	114"	114"	114"	114"	114"	114"	114"	114"
120"	120"	120"	120"	120"	120"	120"	120"	120"	120"

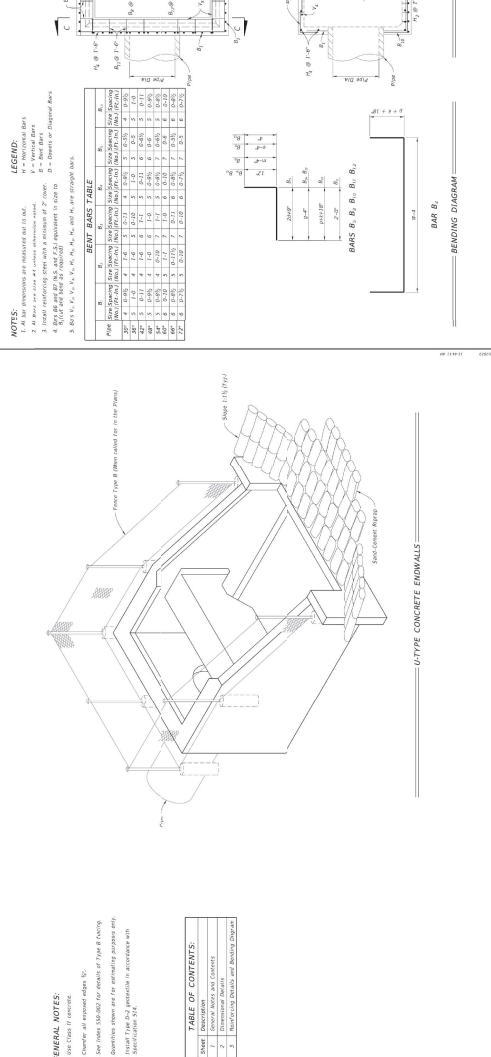


**GENERAL NOTES:**

1. See Notes 11 through 14.
2. See Notes 15 through 17 for details of Type B Energy.
3. Dimensions shown are for reinforcing problem only.
4. Reinforcing steel shall be installed in accordance with ACI 308R-11.

**TABLE OF CONTENTS:**

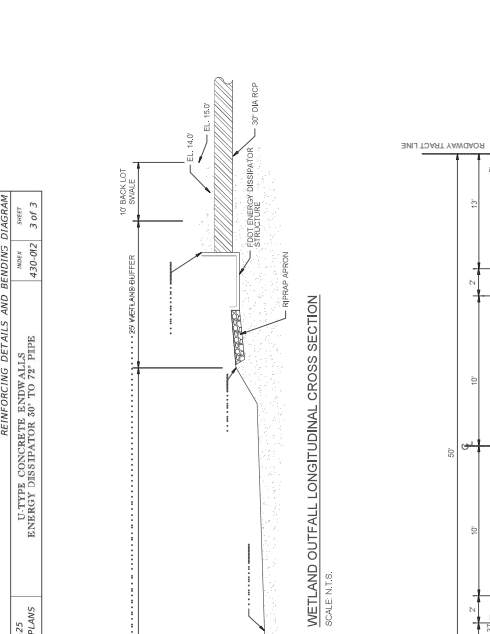
NO.	DESCRIPTION
1	SECTION A-A
2	SECTION B-B
3	REINFORCING DETAILS AND BENDING DIAGRAM



**REINFORCING DETAILS AND BENDING DIAGRAM**

U-TYPE CONCRETE ENDWALLS  
ENERGY DISSIPATOR 30" TO 72" PIPE

DATE: 11/01/23  
REVISED: 11/01/23  
PROJECT: 430-012 1 of 3



**REINFORCING DETAILS AND BENDING DIAGRAM**

U-TYPE CONCRETE ENDWALLS  
ENERGY DISSIPATOR 30" TO 72" PIPE

DATE: 11/01/23  
REVISED: 11/01/23  
PROJECT: 430-012 3 of 3

**NOTES:**

1. All bar dimensions are indicated unless otherwise noted.
2. All bars are to be installed in accordance with ACI 308R-11.
3. All bars are to be installed in accordance with ACI 308R-11.
4. All bars are to be installed in accordance with ACI 308R-11.
5. All bars are to be installed in accordance with ACI 308R-11.

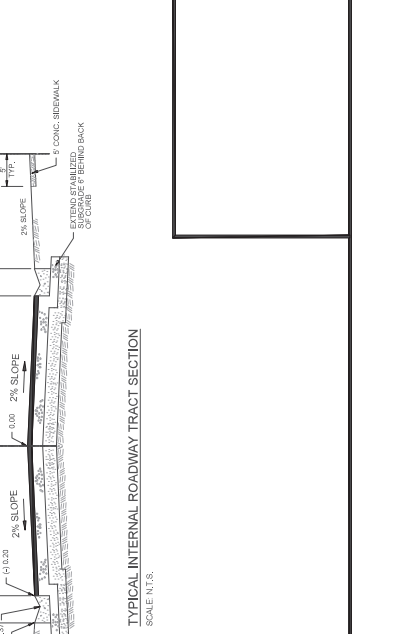
**LEGEND:**

- 1" = 1'-0"
- 2" = 2'-0"
- 3" = 3'-0"
- 4" = 4'-0"
- 5" = 5'-0"
- 6" = 6'-0"
- 7" = 7'-0"
- 8" = 8'-0"
- 9" = 9'-0"
- 10" = 10'-0"
- 11" = 11'-0"
- 12" = 12'-0"
- 13" = 13'-0"
- 14" = 14'-0"
- 15" = 15'-0"
- 16" = 16'-0"
- 17" = 17'-0"
- 18" = 18'-0"
- 19" = 19'-0"
- 20" = 20'-0"
- 21" = 21'-0"
- 22" = 22'-0"
- 23" = 23'-0"
- 24" = 24'-0"
- 25" = 25'-0"
- 26" = 26'-0"
- 27" = 27'-0"
- 28" = 28'-0"
- 29" = 29'-0"
- 30" = 30'-0"
- 31" = 31'-0"
- 32" = 32'-0"
- 33" = 33'-0"
- 34" = 34'-0"
- 35" = 35'-0"
- 36" = 36'-0"
- 37" = 37'-0"
- 38" = 38'-0"
- 39" = 39'-0"
- 40" = 40'-0"
- 41" = 41'-0"
- 42" = 42'-0"
- 43" = 43'-0"
- 44" = 44'-0"
- 45" = 45'-0"
- 46" = 46'-0"
- 47" = 47'-0"
- 48" = 48'-0"
- 49" = 49'-0"
- 50" = 50'-0"

**REINFORCING DETAILS AND BENDING DIAGRAM**

U-TYPE CONCRETE ENDWALLS  
ENERGY DISSIPATOR 30" TO 72" PIPE

DATE: 11/01/23  
REVISED: 11/01/23  
PROJECT: 430-012 2 of 3



**REINFORCING DETAILS AND BENDING DIAGRAM**

U-TYPE CONCRETE ENDWALLS  
ENERGY DISSIPATOR 30" TO 72" PIPE

DATE: 11/01/23  
REVISED: 11/01/23  
PROJECT: 430-012 1 of 3

**NOTES:**

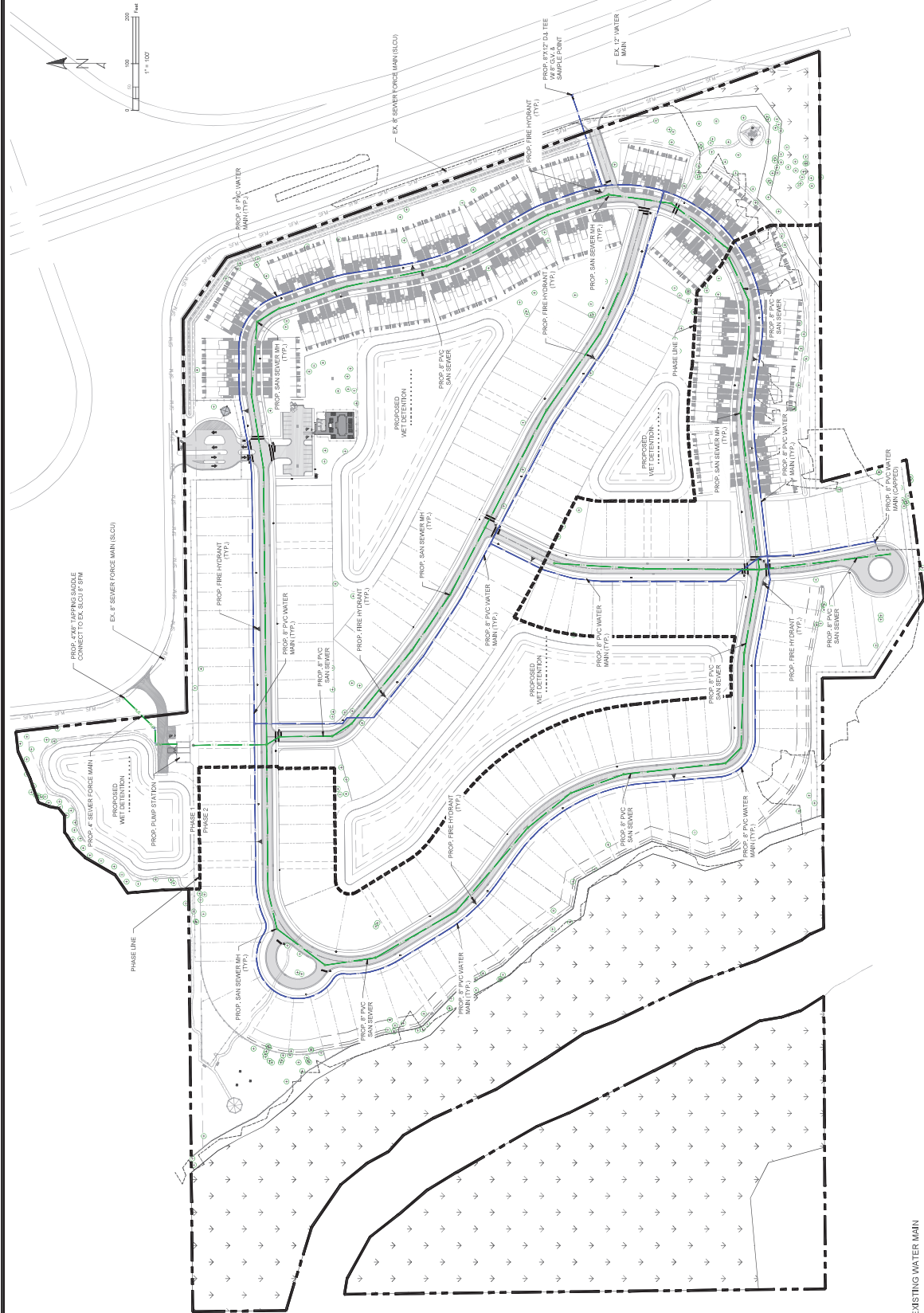
1. All bar dimensions are indicated unless otherwise noted.
2. All bars are to be installed in accordance with ACI 308R-11.
3. All bars are to be installed in accordance with ACI 308R-11.
4. All bars are to be installed in accordance with ACI 308R-11.
5. All bars are to be installed in accordance with ACI 308R-11.

**LEGEND:**

- 1" = 1'-0"
- 2" = 2'-0"
- 3" = 3'-0"
- 4" = 4'-0"
- 5" = 5'-0"
- 6" = 6'-0"
- 7" = 7'-0"
- 8" = 8'-0"
- 9" = 9'-0"
- 10" = 10'-0"
- 11" = 11'-0"
- 12" = 12'-0"
- 13" = 13'-0"
- 14" = 14'-0"
- 15" = 15'-0"
- 16" = 16'-0"
- 17" = 17'-0"
- 18" = 18'-0"
- 19" = 19'-0"
- 20" = 20'-0"
- 21" = 21'-0"
- 22" = 22'-0"
- 23" = 23'-0"
- 24" = 24'-0"
- 25" = 25'-0"
- 26" = 26'-0"
- 27" = 27'-0"
- 28" = 28'-0"
- 29" = 29'-0"
- 30" = 30'-0"
- 31" = 31'-0"
- 32" = 32'-0"
- 33" = 33'-0"
- 34" = 34'-0"
- 35" = 35'-0"
- 36" = 36'-0"
- 37" = 37'-0"
- 38" = 38'-0"
- 39" = 39'-0"
- 40" = 40'-0"
- 41" = 41'-0"
- 42" = 42'-0"
- 43" = 43'-0"
- 44" = 44'-0"
- 45" = 45'-0"
- 46" = 46'-0"
- 47" = 47'-0"
- 48" = 48'-0"
- 49" = 49'-0"
- 50" = 50'-0"

ISSUE	DATE	COMMENTS

**CONTRACTOR'S NOTE:**  
 EXISTING UTILITY LOCATIONS ARE BASED ON MAPS FROM ST. LUCIE COUNTY UTILITIES. FIELD VERIFY IMMEDIATELY FOR ACCURACY AND NOTIFY ENGINEER OF ANY DISCREPANCIES REGARDING SIZE, LOCATION AND FEASIBILITY OF TIE-INS.  
 GENERAL CONTRACTORS RESPONSIBLE FOR ALL CONNECTIONS TO EXISTING UTILITIES.  
**BENCHMARKS**  
 ALL ELEVATIONS REFER TO NORTH AMERICAN VERTICAL DATUM OF 1988.



- UTILITY LEGEND**
- EXISTING WATER MAIN
  - EXISTING SAN SEWER FORCE MAIN
  - PROPOSED WATER LINE
  - PROPOSED SAN SEWER LINE
  - PROPOSED FORCE MAIN
  - PROPOSED FDC
  - ▲ PROPOSED FIRE HYDRANT
- PROPOSED SAN SEWER MANHOLE



